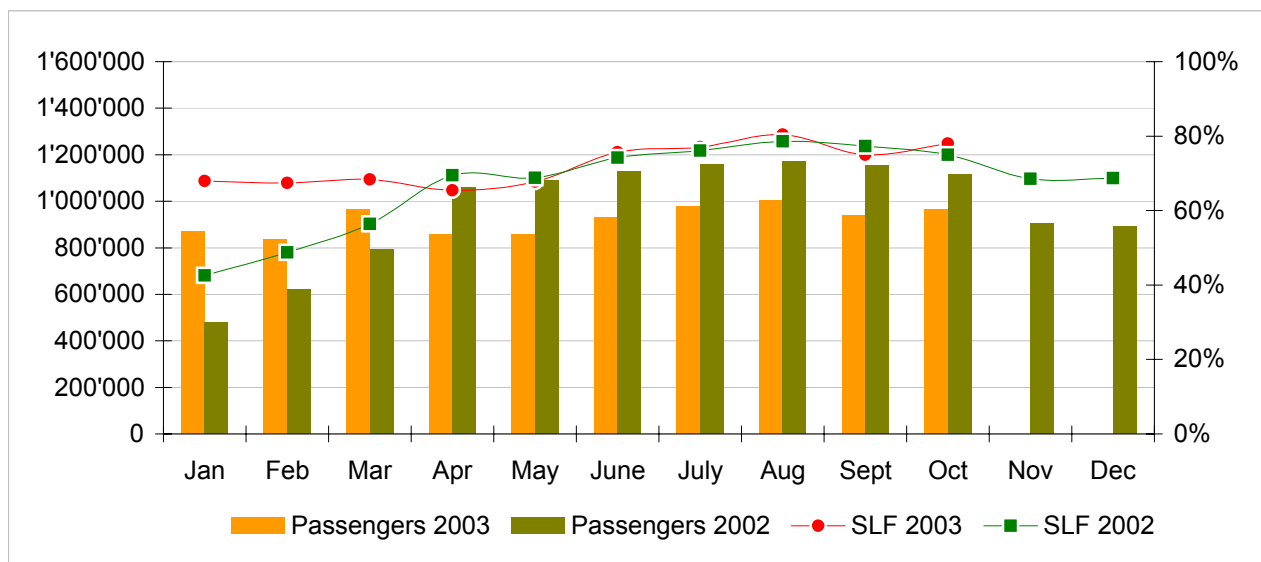


Traffic Statistics October 2003 LX Scheduled Services



	Passengers Europe	Passengers Intercontinental	Passengers Total	SLF Europe	SLF Intercontinental	SLF Total
Jan	623'788	245'067	868'855	46.1%	78.9%	68.0%
Feb	622'717	212'633	835'350	48.7%	77.0%	67.4%
Mar	735'116	230'492	965'608	54.0%	75.6%	68.4%
Apr	647'474	209'610	857'084	57.8%	68.7%	65.4%
May	643'856	211'550	855'406	59.0%	71.6%	67.7%
Jun	700'468	230'101	930'569	66.0%	79.9%	75.7%
Jul	727'706	249'520	977'226	67.6%	81.0%	77.1%
Aug	736'117	265'112	1'001'229	69.9%	84.8%	80.4%
Sep	711'750	228'879	940'629	68.2%	78.0%	75.0%
Oct	727'741	238'261	966'002	69.0%	81.7%	78.0%
Nov						
Dec						

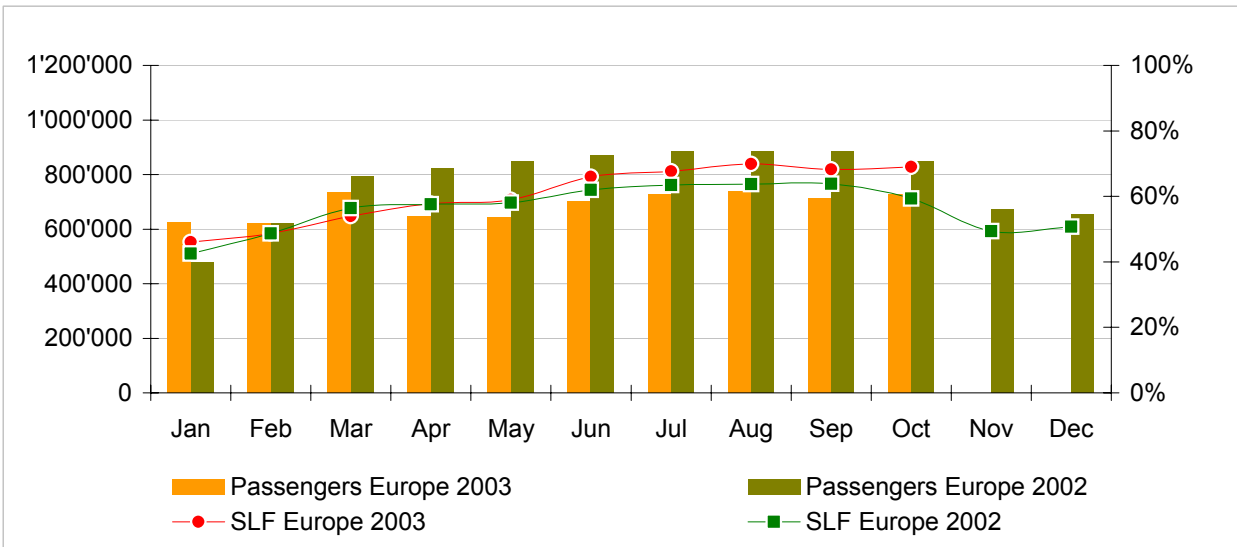
Comparison Passengers and Seat Load Factor (SLF %) versus prior year



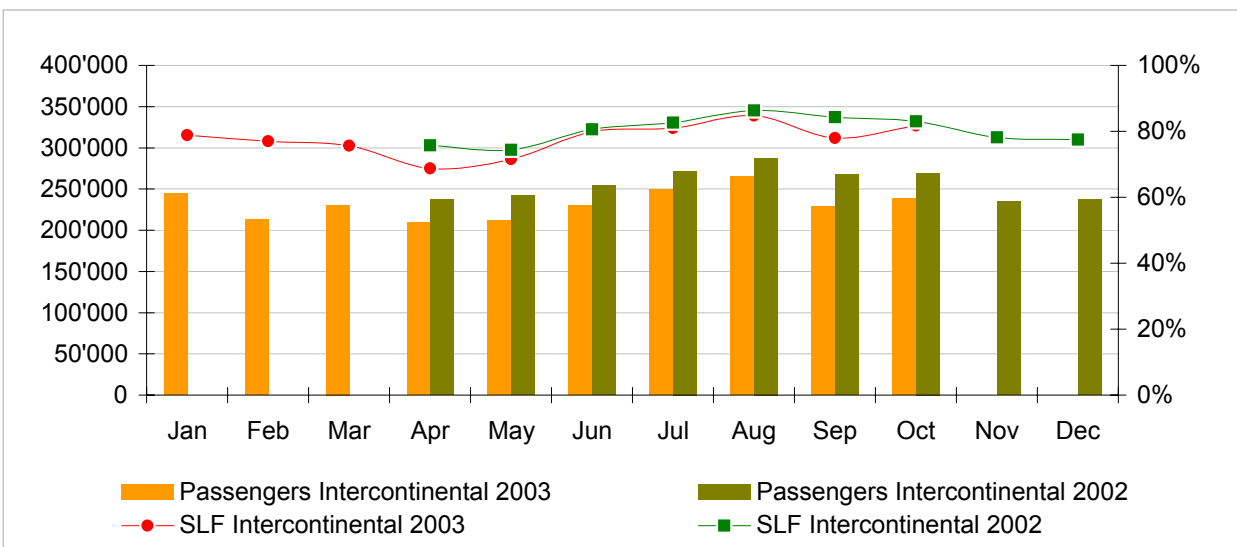
Next updates:

- November figures December 8th, 2003
- December figures January 8th, 2004
- Januar 04 figures February 9th, 2004

Passengers and Seat Load Factor (SLF%) European Business
Comparison versus prior year



Passengers and Seat Load Factor (SLF%) Intercontinental Business
Comparison versus prior year



Traffic Statistics January 2003 LX Scheduled Services



	January			Cumulative		
	2003	2002		2003	2002	
Number of Passengers ¹⁾						
Europe	623'788	477'227	30.7%	623'788	477'227	30.7%
Intercontinental	245'067	0		245'067	0	
Total	868'855	477'227	82.1%	868'855	477'227	82.1%
Flights						
Europe	17'314	15'335	12.9%	17'314	15'335	12.9%
Intercontinental	1'836	0		1'836	0	
Total	19'150	15'335	24.9%	19'150	15'335	24.9%
Available Seat km (ASK, in mio)						
Europe	1'043	773	35.0%	1'043	773	35.0%
Intercontinental	2'094	0		2'094	0	
Total	3'136	773	305.9%	3'136	773	305.9%
Revenue Passenger km (RPK, in mio)						
Europe	480	329	46.0%	480	329	46.0%
Intercontinental	1'651	0		1'651	0	
Total	2'131	329	548.0%	2'131	329	548.0%
Seat Load Factor (SLF, %) ²⁾						
Europe	46.1%	42.6%	3.5%	46.1%	42.6%	3.5%
Intercontinental	78.9%	-		78.9%	-	
Total	68.0%	42.6%	25.4%	68.0%	42.6%	25.4%
Freight Load Factor Volume (FLF, %) ³⁾						
Intercontinental	77.9%	0		83.4%	0	
Freight Tonnes Kilometers (FTK, in 1000)						
Intercontinental	106'301	0		106'301	0	

¹⁾ Revenue Passengers

²⁾ SLF = RPK / ASK
deviation in % pts

³⁾ deviation in % pts

Traffic Statistics February 2003 LX Scheduled Services



Swiss
International
Air Lines

	February			Cumulative		
	2003	2002		2003	2002	
Number of Passengers ¹⁾						
Europe	622'717	621'865	0.1%	1'246'505	621'865	100.4%
Intercontinental	212'633	0		457'700	0	
Total	835'350	621'865	34.3%	1'704'205	621'865	174.0%
Flights						
Europe	16'171	15'898	1.7%	33'485	15'898	110.6%
Intercontinental	1'642	0		3'478	0	
Total	17'813	15'898	12.0%	36'963	15'898	132.5%
Available Seat km (ASK, in mio)						
Europe	957	928	3.2%	2'000	928	115.6%
Intercontinental	1'875	0		3'968	0	
Total	2'832	928	205.3%	5'968	928	543.3%
Revenue Passenger km (RPK, in mio)						
Europe	466	452	3.2%	947	452	109.5%
Intercontinental	1'443	0		3'094	0	
Total	1'910	452	322.6%	4'041	452	794.2%
Seat Load Factor (SLF, %) ²⁾						
Europe	48.7%	48.7%	0.0%	47.3%	48.7%	-1.4%
Intercontinental	77.0%	-		78.0%	-	
Total	67.4%	48.7%	18.7%	67.7%	48.7%	19.0%
Freight Load Factor Volume (FLF, %) ³⁾						
Intercontinental	86.0%	0		83.6%	0	
Freight Tonnes Kilometers (FTK, in 1000)						
Intercontinental	108'934	0		215'235	0	

¹⁾ Revenue Passengers

²⁾ SLF = RPK / ASK
deviation in % pts

³⁾ deviation in % pts

Traffic Statistics March 2003 LX Scheduled Services



	March			Cumulative		
	2003	2002		2003	2002	
Number of Passengers ¹⁾						
Europe	735'116	792'601	-7.3%	1'981'621	1'891'693	4.8%
Intercontinental	230'492	0		688'192	0	
Total	965'608	792'601	21.8%	2'669'813	1'891'693	41.1%
Flights						
Europe	17'770	17'593	1.0%	51'255	48'826	5.0%
Intercontinental	1'819	0		5'297	0	
Total	19'589	17'593	11.3%	56'552	48'826	15.8%
Available Seat km (ASK, in mio)						
Europe	1'044	1'105	-5.5%	3'044	2'805	8.5%
Intercontinental	2'087	0		6'056	0	
Total	3'132	1'105	183.5%	9'100	2'805	224.4%
Revenue Passenger km (RPK, in mio)						
Europe	563	623	-9.6%	1'510	1'404	7.6%
Intercontinental	1'578	0		4'672	0	
Total	2'141	623	243.6%	6'182	1'404	340.3%
Seat Load Factor (SLF, %) ²⁾						
Europe	54.0%	56.4%	-2.5%	49.6%	50.1%	-0.5%
Intercontinental	75.6%	-		77.2%	-	
Total	68.4%	56.4%	12.0%	67.9%	50.1%	17.9%
Freight Load Factor Volume (FLF, %) ³⁾						
Intercontinental	87.4%	0		83.9%	0	
Freight Tonnes Kilometers (FTK, in 1000)						
Intercontinental	120'393	0		335'628	0	

¹⁾ Revenue Passengers

²⁾ SLF = RPK / ASK
deviation in % pts

³⁾ deviation in % pts

Traffic Statistics April 2003 LX Scheduled Services



Swiss
International
Air Lines

	April			Cumulative		
	2003	2002		2003	2002	
Number of Passengers ¹⁾						
Europe	647'474	823'402	-21.4%	2'629'095	2'715'095	-3.2%
Intercontinental	209'610	237'170	-11.6%	897'802	237'170	278.5%
Total	857'084	1'060'572	-19.2%	3'526'897	2'952'265	19.5%
Flights						
Europe	14'025	17'419	-19.5%	65'280	66'245	-1.5%
Intercontinental	1'727	1'852	-6.7%	7'024	1'852	279.3%
Total	15'752	19'271	-18.3%	72'304	68'097	6.2%
Available Seat km (ASK, in mio)						
Europe	867	1'087	-20.3%	3'911	3'892	0.5%
Intercontinental	2'010	2'075	-3.1%	8'066	2'075	288.8%
Total	2'877	3'162	-9.0%	11'977	5'967	100.7%
Revenue Passenger km (RPK, in mio)						
Europe	501	627	-20.1%	2'011	2'031	-1.0%
Intercontinental	1'381	1'570	-12.0%	6'054	1'570	285.5%
Total	1'882	2'197	-14.3%	8'065	3'601	124.0%
Seat Load Factor (SLF, %) ²⁾						
Europe	57.8%	57.6%	0.2%	51.4%	52.2%	-0.8%
Intercontinental	68.7%	75.7%	-7.0%	75.1%	75.7%	-0.6%
Total	65.4%	69.5%	-4.1%	67.3%	60.4%	7.0%
Freight Load Factor Volume (FLF, %) ³⁾						
Intercontinental	82.6%	79.2%	3.4%	83.8%	79.2%	4.6%
Freight Tonnes Kilometers (FTK, in 1000)						
Intercontinental	116'773	104'220	12.0%	452'401	104'220	334.1%

¹⁾ Revenue Passengers

²⁾ SLF = RPK / ASK
deviation in % pts

³⁾ deviation in % pts

Traffic Statistics May 2003 LX Scheduled Services



Swiss
International
Air Lines

	May			Cumulative		
	2003	2002		2003	2002	
Number of Passengers ¹⁾						
Europe	643'856	849'032	-24.2%	3'272'951	3'564'127	-8.2%
Intercontinental	211'550	242'124	-12.6%	1'109'352	479'294	131.5%
Total	855'406	1'091'156	-21.6%	4'382'303	4'043'421	8.4%
Flights						
Europe	14'297	18'121	-21.1%	79'577	84'366	-5.7%
Intercontinental	1'715	1'918	-10.6%	8'739	3'770	131.8%
Total	16'012	20'039	-20.1%	88'316	88'136	0.2%
Available Seat km (ASK, in mio)						
Europe	846	1'129	-25.0%	4'757	5'021	-5.2%
Intercontinental	1'936	2'165	-10.6%	10'002	4'240	135.9%
Total	2'782	3'294	-15.5%	14'759	9'261	59.4%
Revenue Passenger km (RPK, in mio)						
Europe	499	656	-23.9%	2'510	2'686	-6.6%
Intercontinental	1'386	1'611	-14.0%	7'440	3'181	133.9%
Total	1'885	2'266	-16.8%	9'950	5'867	69.6%
Seat Load Factor (SLF, %) ²⁾						
Europe	59.0%	58.1%	0.9%	52.8%	53.5%	-0.7%
Intercontinental	71.6%	74.4%	-2.8%	74.4%	75.0%	-0.7%
Total	67.7%	68.8%	-1.1%	67.4%	63.4%	4.1%
Freight Load Factor Volume (FLF, %) ³⁾						
Intercontinental	85.5%	80.2%	5.3%	84.0%	79.7%	4.3%
Freight Tonnes Kilometers (FTK, in 1000)						
Intercontinental	110'594	116'131	-4.8%	562'995	220'351	155.5%

¹⁾ Revenue Passengers

²⁾ SLF = RPK / ASK
deviation in % pts

³⁾ deviation in % pts

Traffic Statistics June 2003 LX Scheduled Services



Swiss
International
Air Lines

	June			Cumulative		
	2003	2002		2003	2002	
Number of Passengers ¹⁾						
Europe	700'468	871'989	-19.7%	3'973'419	4'436'116	-10.4%
Intercontinental	230'101	254'207	-9.5%	1'339'453	733'501	82.6%
Total	930'569	1'126'196	-17.4%	5'312'872	5'169'617	2.8%
Flights						
Europe	13'978	17'799	-21.5%	93'555	102'165	-8.4%
Intercontinental	1'686	1'863	-9.5%	10'425	5'633	85.1%
Total	15'664	19'662	-20.3%	103'980	107'798	-3.5%
Available Seat km (ASK, in mio)						
Europe	828	1'099	-24.7%	5'585	6'120	-8.7%
Intercontinental	1'892	2'100	-9.9%	11'894	6'339	87.6%
Total	2'719	3'199	-15.0%	17'479	12'459	40.3%
Revenue Passenger km (RPK, in mio)						
Europe	546	681	-19.8%	3'056	3'367	-9.2%
Intercontinental	1'511	1'692	-10.7%	8'951	4'873	83.7%
Total	2'057	2'373	-13.3%	12'007	8'240	45.7%
Seat Load Factor (SLF, %) ²⁾						
Europe	66.0%	62.0%	4.0%	54.7%	55.0%	-0.3%
Intercontinental	79.9%	80.6%	-0.7%	75.3%	76.9%	-1.6%
Total	75.7%	74.2%	1.5%	68.7%	66.1%	2.6%
Freight Load Factor Volume (FLF, %) ³⁾						
Intercontinental	84.5%	86.0%	-1.5%	84.0%	81.8%	2.2%
Freight Tonnes Kilometers (FTK, in 1000)						
Intercontinental	106'280	128'052	-17.0%	669'275	348'403	92.1%

¹⁾ Revenue Passengers

²⁾ SLF = RPK / ASK
deviation in % pts

³⁾ deviation in % pts

Traffic Statistics July 2003 LX Scheduled Services



Swiss
International
Air Lines

	July			Cumulative		
	2003	2002		2003	2002	
Number of Passengers ¹⁾						
Europe	727'706	886'661	-17.9%	4'701'125	5'322'777	-11.7%
Intercontinental	249'520	271'995	-8.3%	1'588'973	1'005'496	58.0%
Total	977'226	1'158'656	-15.7%	6'290'098	6'328'273	-0.6%
Flights						
Europe	14'286	18'448	-22.6%	107'841	120'613	-10.6%
Intercontinental	1'771	1'924	-8.0%	12'196	7'557	61.4%
Total	16'057	20'372	-21.2%	120'037	128'170	-6.3%
Available Seat km (ASK, in mio)						
Europe	850	1'117	-23.9%	6'435	7'237	-11.1%
Intercontinental	2'015	2'171	-7.2%	13'909	8'510	63.4%
Total	2'865	3'287	-12.9%	20'343	15'747	29.2%
Revenue Passenger km (RPK, in mio)						
Europe	575	709	-18.9%	3'631	4'076	-10.9%
Intercontinental	1'633	1'793	-8.9%	10'584	6'666	58.8%
Total	2'207	2'502	-11.8%	14'215	10'742	32.3%
Seat Load Factor (SLF, %) ²⁾						
Europe	67.6%	63.5%	4.1%	56.4%	56.3%	0.1%
Intercontinental	81.0%	82.6%	-1.6%	76.1%	78.3%	-2.2%
Total	77.1%	76.1%	0.9%	69.9%	68.2%	1.7%
Freight Load Factor Volume (FLF, %) ³⁾						
Intercontinental	83.7%	83.7%	0.0%	84.0%	82.3%	1.7%
Freight Tonnes Kilometers (FTK, in 1000)						
Intercontinental	99'370	120'594	-17.6%	768'645	468'997	63.9%

¹⁾ Revenue Passengers

²⁾ SLF = RPK / ASK
deviation in % pts

³⁾ deviation in % pts

Traffic Statistics August 2003 LX Scheduled Services



Swiss
International
Air Lines

	August			Cumulative		
	2003	2002		2003	2002	
Number of Passengers ¹⁾						
Europe	736'117	885'074	-16.8%	5'437'242	6'207'851	-12.4%
Intercontinental	265'112	287'683	-7.8%	1'854'085	1'293'179	43.4%
Total	1'001'229	1'172'757	-14.6%	7'291'327	7'501'030	-2.8%
Flights						
Europe	13'864	18'390	-24.6%	121'705	139'003	-12.4%
Intercontinental	1'803	1'930	-6.6%	13'999	9'487	47.6%
Total	15'667	20'320	-22.9%	135'704	148'490	-8.6%
Available Seat km (ASK, in mio)						
Europe	847	1'115	-24.1%	7'282	8'352	-12.8%
Intercontinental	2'034	2'168	-6.2%	15'943	10'678	49.3%
Total	2'881	3'284	-12.3%	23'224	19'030	22.0%
Revenue Passenger km (RPK, in mio)						
Europe	592	711	-16.7%	4'223	4'787	-11.8%
Intercontinental	1'725	1'871	-7.8%	12'309	8'537	44.2%
Total	2'317	2'581	-10.3%	16'531	13'324	24.1%
Seat Load Factor (SLF, %) ²⁾						
Europe	69.9%	63.7%	6.2%	58.0%	57.3%	0.7%
Intercontinental	84.8%	86.3%	-1.5%	77.2%	79.9%	-2.7%
Total	80.4%	78.6%	1.8%	71.2%	70.0%	1.2%
Freight Load Factor Volume (FLF, %) ³⁾						
Intercontinental	79.7%	82.1%	-2.4%	83.7%	82.2%	1.5%
Freight Tonnes Kilometers (FTK, in 1000)						
Intercontinental	97'449	112'189	-13.1%	866'094	581'186	49.0%

¹⁾ Revenue Passengers

²⁾ SLF = RPK / ASK
deviation in % pts

³⁾ deviation in % pts

Traffic Statistics September 2003 LX Scheduled Services



	September			Cumulative		
	2003	2002		2003	2002	
Number of Passengers ¹⁾						
Europe	711'750	886'302	-19.7%	6'148'992	7'094'153	-13.3%
Intercontinental	228'879	267'131	-14.3%	2'082'964	1'560'310	33.5%
Total	940'629	1'153'433	-18.4%	8'231'956	8'654'463	-4.9%
Flights						
Europe	13'288	17'959	-26.0%	134'993	156'962	-14.0%
Intercontinental	1'676	1'859	-9.8%	15'675	11'346	38.2%
Total	14'964	19'818	-24.5%	150'668	168'308	-10.5%
Available Seat km (ASK, in mio)						
Europe	811	1'080	-24.9%	8'092	9'432	-14.2%
Intercontinental	1'878	2'089	-10.1%	17'821	12'767	39.6%
Total	2'689	3'169	-15.1%	25'913	22'199	16.7%
Revenue Passenger km (RPK, in mio)						
Europe	553	689	-19.8%	4'776	5'476	-12.8%
Intercontinental	1'465	1'760	-16.7%	13'774	10'297	33.8%
Total	2'018	2'449	-17.6%	18'549	15'773	17.6%
Seat Load Factor (SLF, %) ²⁾						
Europe	68.2%	63.8%	4.4%	59.0%	58.1%	1.0%
Intercontinental	78.0%	84.2%	-6.2%	77.3%	80.6%	-3.4%
Total	75.0%	77.3%	-2.3%	71.6%	71.0%	0.5%
Freight Load Factor Volume (FLF, %) ³⁾						
Intercontinental	85.2%	86.9%	-1.7%	83.8%	83.0%	0.8%
Freight Tonnes Kilometers (FTK, in 1000)						
Intercontinental	111'664	111'190	0.4%	977'758	692'376	41.2%

¹⁾ Revenue Passengers

²⁾ SLF = RPK / ASK
deviation in % pts

³⁾ deviation in % pts

Traffic Statistics October 2003 LX Scheduled Services



	October			Cumulative		
	2003	2002		2003	2002	
Number of Passengers ¹⁾						
Europe	727'741	847'411	-14.1%	6'876'733	7'941'564	-13.4%
Intercontinental	238'261	269'482	-11.6%	2'321'225	1'829'792	26.9%
Total	966'002	1'116'893	-13.5%	9'197'958	9'771'356	-5.9%
Flights						
Europe	12'801	18'446	-30.6%	147'794	175'408	-15.7%
Intercontinental	1'707	1'924	-11.3%	17'382	13'270	31.0%
Total	14'508	20'370	-28.8%	165'176	188'678	-12.5%
Available Seat km (ASK, in mio)						
Europe	807	1'091	-26.0%	8'899	10'523	-15.4%
Intercontinental	1'960	2'124	-7.7%	19'781	14'891	32.8%
Total	2'767	3'214	-13.9%	28'680	25'414	12.9%
Revenue Passenger km (RPK, in mio)						
Europe	557	647	-13.9%	5'333	6'123	-12.9%
Intercontinental	1'601	1'763	-9.2%	15'375	12'060	27.5%
Total	2'159	2'411	-10.5%	20'708	18'183	13.9%
Seat Load Factor (SLF, %) ²⁾						
Europe	69.0%	59.3%	9.7%	59.9%	58.2%	1.7%
Intercontinental	81.7%	83.0%	-1.3%	77.7%	81.0%	-3.3%
Total	78.0%	75.0%	3.0%	72.2%	71.5%	0.7%
Estimate Freight Load Factor Volume (FLF, %) ³⁾						
Intercontinental	85.5%	87.9%	-2.4%	83.9%	83.7%	0.2%
Estimate Freight Tonnes Kilometers (FTK, in 1000)						
Intercontinental	112'706	121'872	-7.5%	1'090'464	814'248	34%

¹⁾ Revenue Passengers

²⁾ SLF = RPK / ASK
deviation in % pts

³⁾ deviation in % pts

Traffic Statistics November 2003 LX Scheduled Services



Swiss
International
Air Lines

	November		Cumulative	
	2003	2002	2003	2002
Number of Passengers ¹⁾				
Europe	671'034		8'612'598	
Intercontinental	234'764		2'064'556	
Total	905'798		10'677'154	
Flights				
Europe	17'443		192'851	
Intercontinental	1'800		15'070	
Total	19'243		207'921	
Available Seat km (ASK, in mio)				
Europe	1'025		11'548	
Intercontinental	2'019		16'910	
Total	3'044		28'458	
Revenue Passenger km (RPK, in mio)				
Europe	506		6'629	
Intercontinental	1'579		13'639	
Total	2'085		20'268	
Seat Load Factor (SLF, %) ²⁾				
Europe	49.4%		57.4%	
Intercontinental	78.2%		80.7%	
Total	68.5%		71.2%	
Freight Load Factor Volume (FLF, %) ³⁾				
Intercontinental	86.1%		84.0%	
Freight Tonnes Kilometers (FTK, in 1000)				
Intercontinental	115'990		930'238	

¹⁾ Revenue Passengers

²⁾ SLF = RPK / ASK
deviation in % pts

³⁾ deviation in % pts

Traffic Statistics December 2003 LX Scheduled Services



	December		Cumulative	
	2003	2002	2003	2002
Number of Passengers ¹⁾				
Europe	655'714		9'268'312	
Intercontinental	236'885		2'301'441	
Total	892'599		11'569'753	
Flights				
Europe	16'866		209'717	
Intercontinental	1'826		16'896	
Total	18'692		226'613	
Available Seat km (ASK, in mio)				
Europe	1'009		12'557	
Intercontinental	2'053		18'963	
Total	3'061		31'520	
Revenue Passenger km (RPK, in mio)				
Europe	511		7'141	
Intercontinental	1'591		15'230	
Total	2'102		22'371	
Seat Load Factor (SLF, %) ²⁾				
Europe	50.7%		56.9%	
Intercontinental	77.5%		80.3%	
Total	68.7%		71.0%	
Freight Load Factor Volume (FLF, %) ³⁾				
Intercontinental	83.8%		84.0%	
Freight Tonnes Kilometers (FTK, in 1000)				
Intercontinental	110'052		1'040'290	

¹⁾ Revenue Passengers

²⁾ SLF = RPK / ASK
deviation in % pts

³⁾ deviation in % pts