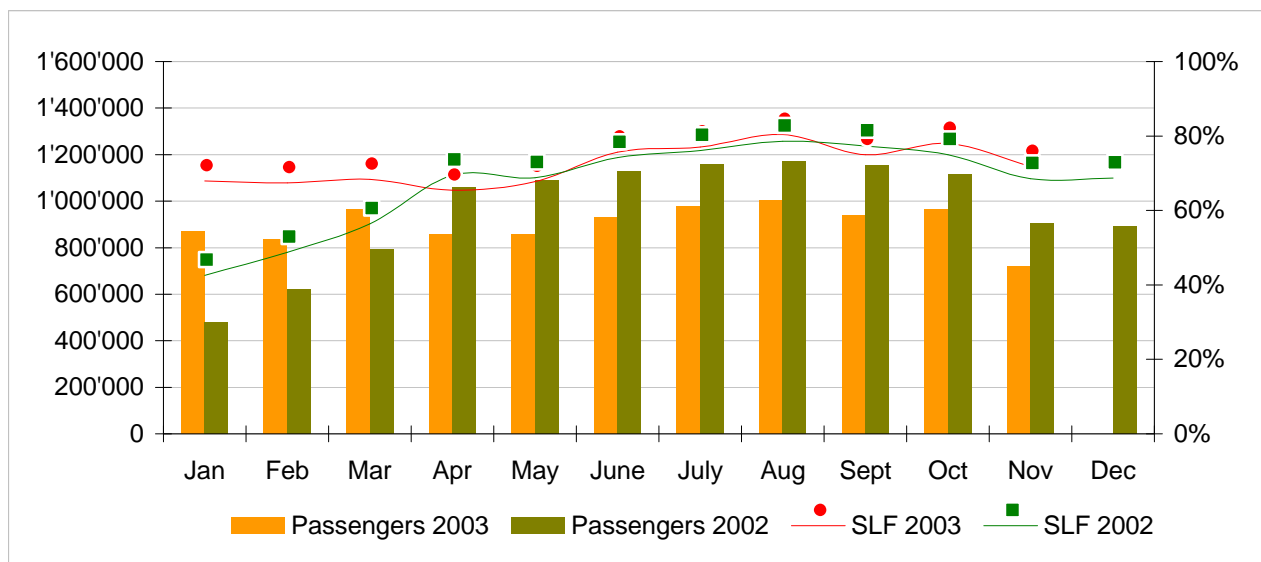


## Traffic Statistics November 2003 LX Scheduled Services



	Passengers Europe	Passengers Intercontinental	Passengers Total	SLF Europe	SLF Intercontinental	SLF Total
Jan	623'788	245'067	868'855	46.1%	78.9%	68.0%
Feb	622'717	212'633	835'350	48.7%	77.0%	67.4%
Mar	735'116	230'492	965'608	54.0%	75.6%	68.4%
Apr	647'474	209'610	857'084	57.8%	68.7%	65.4%
May	643'856	211'550	855'406	59.0%	71.6%	67.7%
Jun	700'468	230'101	930'569	66.0%	79.9%	75.7%
Jul	727'706	249'520	977'226	67.6%	81.0%	77.1%
Aug	736'117	265'112	1'001'229	69.9%	84.8%	80.4%
Sep	711'750	228'879	940'629	68.2%	78.0%	75.0%
Oct	727'741	238'261	966'002	69.0%	81.7%	78.0%
Nov	533'209	186'914	720'123	56.8%	78.0%	71.8%
Dec						

### Comparison Passengers and Seat Load Factor (SLF %) versus prior year



### Next updates:

- December figures      January 15th, 2004
- Januar 04 figures      February 9th, 2004
- February 04 figures    March 8th, 2004

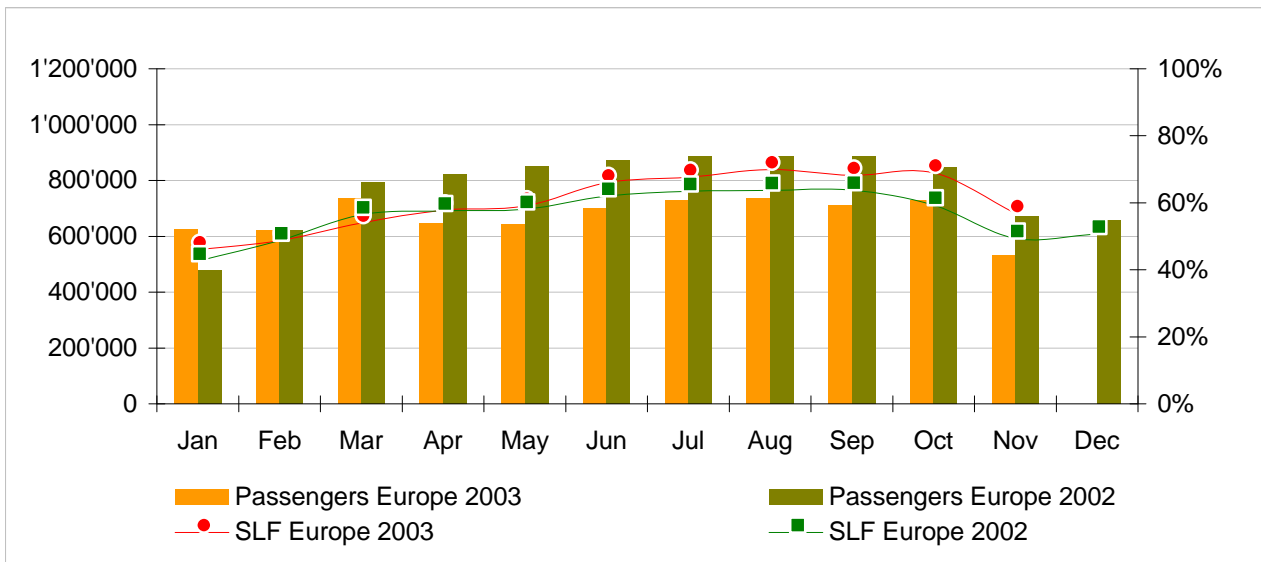
# Traffic Statistics November 2003

## European and Intercontinental Traffic Development



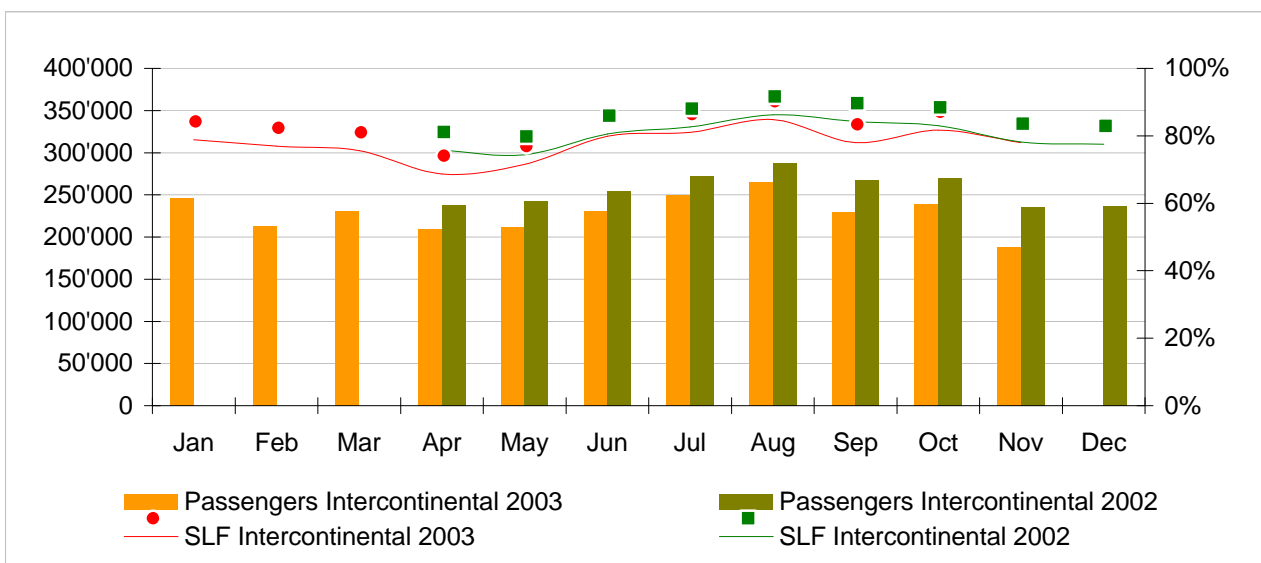
### Passengers and Seat Load Factor (SLF%) European Business

Comparison versus prior year



### Passengers and Seat Load Factor (SLF%) Intercontinental Business

Comparison versus prior year



## Traffic Statistics January 2003 LX Scheduled Services



Swiss  
International  
Air Lines

	January			Cumulative		
	2003	2002		2003	2002	
<b>Number of Passengers <sup>1)</sup></b>						
Europe	623'788	477'227	30.7%	623'788	477'227	30.7%
Intercontinental	245'067	0		245'067	0	
Total	868'855	477'227	82.1%	868'855	477'227	82.1%
<b>Flights</b>						
Europe	17'314	15'335	12.9%	17'314	15'335	12.9%
Intercontinental	1'836	0		1'836	0	
Total	19'150	15'335	24.9%	19'150	15'335	24.9%
<b>Available Seat km (ASK, in mio)</b>						
Europe	1'043	773	35.0%	1'043	773	35.0%
Intercontinental	2'094	0		2'094	0	
Total	3'136	773	305.9%	3'136	773	305.9%
<b>Revenue Passenger km (RPK, in mio)</b>						
Europe	480	329	46.0%	480	329	46.0%
Intercontinental	1'651	0		1'651	0	
Total	2'131	329	548.0%	2'131	329	548.0%
<b>Seat Load Factor (SLF, %) <sup>2)</sup></b>						
Europe	46.1%	42.6%	3.5%	46.1%	42.6%	3.5%
Intercontinental	78.9%	-		78.9%	-	
Total	68.0%	42.6%	25.4%	68.0%	42.6%	25.4%
<b>Freight Load Factor Volume (FLF, %) <sup>3)</sup></b>						
Intercontinental	77.9%	0		83.4%	0	
<b>Freight Tonnes Kilometers (FTK, in 1000)</b>						
Intercontinental	106'301	0		106'301	0	

<sup>1)</sup> Revenue Passengers

<sup>2)</sup> SLF = RPK / ASK  
deviation in % pts

<sup>3)</sup> deviation in % pts

## Traffic Statistics February 2003 LX Scheduled Services



Swiss  
International  
Air Lines

	February			Cumulative		
	2003	2002		2003	2002	
<b>Number of Passengers <sup>1)</sup></b>						
Europe	622'717	621'865	0.1%	1'246'505	621'865	100.4%
Intercontinental	212'633	0		457'700	0	
Total	835'350	621'865	34.3%	1'704'205	621'865	174.0%
<b>Flights</b>						
Europe	16'171	15'898	1.7%	33'485	15'898	110.6%
Intercontinental	1'642	0		3'478	0	
Total	17'813	15'898	12.0%	36'963	15'898	132.5%
<b>Available Seat km (ASK, in mio)</b>						
Europe	957	928	3.2%	2'000	928	115.6%
Intercontinental	1'875	0		3'968	0	
Total	2'832	928	205.3%	5'968	928	543.3%
<b>Revenue Passenger km (RPK, in mio)</b>						
Europe	466	452	3.2%	947	452	109.5%
Intercontinental	1'443	0		3'094	0	
Total	1'910	452	322.6%	4'041	452	794.2%
<b>Seat Load Factor (SLF, %) <sup>2)</sup></b>						
Europe	48.7%	48.7%	0.0%	47.3%	48.7%	-1.4%
Intercontinental	77.0%	-		78.0%	-	
Total	67.4%	48.7%	18.7%	67.7%	48.7%	19.0%
<b>Freight Load Factor Volume (FLF, %) <sup>3)</sup></b>						
Intercontinental	86.0%	0		83.6%	0	
<b>Freight Tonnes Kilometers (FTK, in 1000)</b>						
Intercontinental	108'934	0		215'235	0	

<sup>1)</sup> Revenue Passengers

<sup>2)</sup> SLF = RPK / ASK  
deviation in % pts

<sup>3)</sup> deviation in % pts

## Traffic Statistics March 2003 LX Scheduled Services



	March			Cumulative		
	2003	2002		2003	2002	
<b>Number of Passengers <sup>1)</sup></b>						
Europe	735'116	792'601	-7.3%	1'981'621	1'891'693	4.8%
Intercontinental	230'492	0		688'192	0	
Total	965'608	792'601	21.8%	2'669'813	1'891'693	41.1%
<b>Flights</b>						
Europe	17'770	17'593	1.0%	51'255	48'826	5.0%
Intercontinental	1'819	0		5'297	0	
Total	19'589	17'593	11.3%	56'552	48'826	15.8%
<b>Available Seat km (ASK, in mio)</b>						
Europe	1'044	1'105	-5.5%	3'044	2'805	8.5%
Intercontinental	2'087	0		6'056	0	
Total	3'132	1'105	183.5%	9'100	2'805	224.4%
<b>Revenue Passenger km (RPK, in mio)</b>						
Europe	563	623	-9.6%	1'510	1'404	7.6%
Intercontinental	1'578	0		4'672	0	
Total	2'141	623	243.6%	6'182	1'404	340.3%
<b>Seat Load Factor (SLF, %) <sup>2)</sup></b>						
Europe	54.0%	56.4%	-2.5%	49.6%	50.1%	-0.5%
Intercontinental	75.6%	-		77.2%	-	
Total	68.4%	56.4%	12.0%	67.9%	50.1%	17.9%
<b>Freight Load Factor Volume (FLF, %) <sup>3)</sup></b>						
Intercontinental	87.4%	0		83.9%	0	
<b>Freight Tonnes Kilometers (FTK, in 1000)</b>						
Intercontinental	120'393	0		335'628	0	

<sup>1)</sup> Revenue Passengers

<sup>2)</sup> SLF = RPK / ASK  
deviation in % pts

<sup>3)</sup> deviation in % pts

## Traffic Statistics April 2003 LX Scheduled Services



Swiss  
International  
Air Lines

	April			Cumulative		
	2003	2002		2003	2002	
<b>Number of Passengers <sup>1)</sup></b>						
Europe	647'474	823'402	-21.4%	2'629'095	2'715'095	-3.2%
Intercontinental	209'610	237'170	-11.6%	897'802	237'170	278.5%
Total	857'084	1'060'572	-19.2%	3'526'897	2'952'265	19.5%
<b>Flights</b>						
Europe	14'025	17'419	-19.5%	65'280	66'245	-1.5%
Intercontinental	1'727	1'852	-6.7%	7'024	1'852	279.3%
Total	15'752	19'271	-18.3%	72'304	68'097	6.2%
<b>Available Seat km (ASK, in mio)</b>						
Europe	867	1'087	-20.3%	3'911	3'892	0.5%
Intercontinental	2'010	2'075	-3.1%	8'066	2'075	288.8%
Total	2'877	3'162	-9.0%	11'977	5'967	100.7%
<b>Revenue Passenger km (RPK, in mio)</b>						
Europe	501	627	-20.1%	2'011	2'031	-1.0%
Intercontinental	1'381	1'570	-12.0%	6'054	1'570	285.5%
Total	1'882	2'197	-14.3%	8'065	3'601	124.0%
<b>Seat Load Factor (SLF, %) <sup>2)</sup></b>						
Europe	57.8%	57.6%	0.2%	51.4%	52.2%	-0.8%
Intercontinental	68.7%	75.7%	-7.0%	75.1%	75.7%	-0.6%
Total	65.4%	69.5%	-4.1%	67.3%	60.4%	7.0%
<b>Freight Load Factor Volume (FLF, %) <sup>3)</sup></b>						
Intercontinental	82.6%	79.2%	3.4%	83.8%	79.2%	4.6%
<b>Freight Tonnes Kilometers (FTK, in 1000)</b>						
Intercontinental	116'773	104'220	12.0%	452'401	104'220	334.1%

<sup>1)</sup> Revenue Passengers

<sup>2)</sup> SLF = RPK / ASK  
deviation in % pts

<sup>3)</sup> deviation in % pts

## Traffic Statistics May 2003 LX Scheduled Services



Swiss  
International  
Air Lines

	May			Cumulative		
	2003	2002		2003	2002	
<b>Number of Passengers <sup>1)</sup></b>						
Europe	643'856	849'032	-24.2%	3'272'951	3'564'127	-8.2%
Intercontinental	211'550	242'124	-12.6%	1'109'352	479'294	131.5%
Total	855'406	1'091'156	-21.6%	4'382'303	4'043'421	8.4%
<b>Flights</b>						
Europe	14'297	18'121	-21.1%	79'577	84'366	-5.7%
Intercontinental	1'715	1'918	-10.6%	8'739	3'770	131.8%
Total	16'012	20'039	-20.1%	88'316	88'136	0.2%
<b>Available Seat km (ASK, in mio)</b>						
Europe	846	1'129	-25.0%	4'757	5'021	-5.2%
Intercontinental	1'936	2'165	-10.6%	10'002	4'240	135.9%
Total	2'782	3'294	-15.5%	14'759	9'261	59.4%
<b>Revenue Passenger km (RPK, in mio)</b>						
Europe	499	656	-23.9%	2'510	2'686	-6.6%
Intercontinental	1'386	1'611	-14.0%	7'440	3'181	133.9%
Total	1'885	2'266	-16.8%	9'950	5'867	69.6%
<b>Seat Load Factor (SLF, %) <sup>2)</sup></b>						
Europe	59.0%	58.1%	0.9%	52.8%	53.5%	-0.7%
Intercontinental	71.6%	74.4%	-2.8%	74.4%	75.0%	-0.7%
Total	67.7%	68.8%	-1.1%	67.4%	63.4%	4.1%
<b>Freight Load Factor Volume (FLF, %) <sup>3)</sup></b>						
Intercontinental	85.5%	80.2%	5.3%	84.0%	79.7%	4.3%
<b>Freight Tonnes Kilometers (FTK, in 1000)</b>						
Intercontinental	110'594	116'131	-4.8%	562'995	220'351	155.5%

<sup>1)</sup> Revenue Passengers

<sup>2)</sup> SLF = RPK / ASK  
deviation in % pts

<sup>3)</sup> deviation in % pts

## Traffic Statistics June 2003 LX Scheduled Services



	June			Cumulative		
	2003	2002		2003	2002	
<b>Number of Passengers <sup>1)</sup></b>						
Europe	700'468	871'989	-19.7%	3'973'419	4'436'116	-10.4%
Intercontinental	230'101	254'207	-9.5%	1'339'453	733'501	82.6%
Total	930'569	1'126'196	-17.4%	5'312'872	5'169'617	2.8%
<b>Flights</b>						
Europe	13'978	17'799	-21.5%	93'555	102'165	-8.4%
Intercontinental	1'686	1'863	-9.5%	10'425	5'633	85.1%
Total	15'664	19'662	-20.3%	103'980	107'798	-3.5%
<b>Available Seat km (ASK, in mio)</b>						
Europe	828	1'099	-24.7%	5'585	6'120	-8.7%
Intercontinental	1'892	2'100	-9.9%	11'894	6'339	87.6%
Total	2'719	3'199	-15.0%	17'479	12'459	40.3%
<b>Revenue Passenger km (RPK, in mio)</b>						
Europe	546	681	-19.8%	3'056	3'367	-9.2%
Intercontinental	1'511	1'692	-10.7%	8'951	4'873	83.7%
Total	2'057	2'373	-13.3%	12'007	8'240	45.7%
<b>Seat Load Factor (SLF, %) <sup>2)</sup></b>						
Europe	66.0%	62.0%	4.0%	54.7%	55.0%	-0.3%
Intercontinental	79.9%	80.6%	-0.7%	75.3%	76.9%	-1.6%
Total	75.7%	74.2%	1.5%	68.7%	66.1%	2.6%
<b>Freight Load Factor Volume (FLF, %) <sup>3)</sup></b>						
Intercontinental	84.5%	86.0%	-1.5%	84.0%	81.8%	2.2%
<b>Freight Tonnes Kilometers (FTK, in 1000)</b>						
Intercontinental	106'280	128'052	-17.0%	669'275	348'403	92.1%

<sup>1)</sup> Revenue Passengers

<sup>2)</sup> SLF = RPK / ASK  
deviation in % pts

<sup>3)</sup> deviation in % pts

## Traffic Statistics July 2003 LX Scheduled Services



Swiss  
International  
Air Lines

	July			Cumulative		
	2003	2002		2003	2002	
<b>Number of Passengers <sup>1)</sup></b>						
Europe	727'706	886'661	-17.9%	4'701'125	5'322'777	-11.7%
Intercontinental	249'520	271'995	-8.3%	1'588'973	1'005'496	58.0%
Total	977'226	1'158'656	-15.7%	6'290'098	6'328'273	-0.6%
<b>Flights</b>						
Europe	14'286	18'448	-22.6%	107'841	120'613	-10.6%
Intercontinental	1'771	1'924	-8.0%	12'196	7'557	61.4%
Total	16'057	20'372	-21.2%	120'037	128'170	-6.3%
<b>Available Seat km (ASK, in mio)</b>						
Europe	850	1'117	-23.9%	6'435	7'237	-11.1%
Intercontinental	2'015	2'171	-7.2%	13'909	8'510	63.4%
Total	2'865	3'287	-12.9%	20'343	15'747	29.2%
<b>Revenue Passenger km (RPK, in mio)</b>						
Europe	575	709	-18.9%	3'631	4'076	-10.9%
Intercontinental	1'633	1'793	-8.9%	10'584	6'666	58.8%
Total	2'207	2'502	-11.8%	14'215	10'742	32.3%
<b>Seat Load Factor (SLF, %) <sup>2)</sup></b>						
Europe	67.6%	63.5%	4.1%	56.4%	56.3%	0.1%
Intercontinental	81.0%	82.6%	-1.6%	76.1%	78.3%	-2.2%
Total	77.1%	76.1%	0.9%	69.9%	68.2%	1.7%
<b>Freight Load Factor Volume (FLF, %) <sup>3)</sup></b>						
Intercontinental	83.7%	83.7%	0.0%	84.0%	82.3%	1.7%
<b>Freight Tonnes Kilometers (FTK, in 1000)</b>						
Intercontinental	99'370	120'594	-17.6%	768'645	468'997	63.9%

<sup>1)</sup> Revenue Passengers

<sup>2)</sup> SLF = RPK / ASK  
deviation in % pts

<sup>3)</sup> deviation in % pts

## Traffic Statistics August 2003 LX Scheduled Services



Swiss  
International  
Air Lines

	August			Cumulative		
	2003	2002		2003	2002	
<b>Number of Passengers <sup>1)</sup></b>						
Europe	736'117	885'074	-16.8%	5'437'242	6'207'851	-12.4%
Intercontinental	265'112	287'683	-7.8%	1'854'085	1'293'179	43.4%
Total	1'001'229	1'172'757	-14.6%	7'291'327	7'501'030	-2.8%
<b>Flights</b>						
Europe	13'864	18'390	-24.6%	121'705	139'003	-12.4%
Intercontinental	1'803	1'930	-6.6%	13'999	9'487	47.6%
Total	15'667	20'320	-22.9%	135'704	148'490	-8.6%
<b>Available Seat km (ASK, in mio)</b>						
Europe	847	1'115	-24.1%	7'282	8'352	-12.8%
Intercontinental	2'034	2'168	-6.2%	15'943	10'678	49.3%
Total	2'881	3'284	-12.3%	23'224	19'030	22.0%
<b>Revenue Passenger km (RPK, in mio)</b>						
Europe	592	711	-16.7%	4'223	4'787	-11.8%
Intercontinental	1'725	1'871	-7.8%	12'309	8'537	44.2%
Total	2'317	2'581	-10.3%	16'531	13'324	24.1%
<b>Seat Load Factor (SLF, %) <sup>2)</sup></b>						
Europe	69.9%	63.7%	6.2%	58.0%	57.3%	0.7%
Intercontinental	84.8%	86.3%	-1.5%	77.2%	79.9%	-2.7%
Total	80.4%	78.6%	1.8%	71.2%	70.0%	1.2%
<b>Freight Load Factor Volume (FLF, %) <sup>3)</sup></b>						
Intercontinental	79.7%	82.1%	-2.4%	83.7%	82.2%	1.5%
<b>Freight Tonnes Kilometers (FTK, in 1000)</b>						
Intercontinental	97'449	112'189	-13.1%	866'094	581'186	49.0%

<sup>1)</sup> Revenue Passengers

<sup>2)</sup> SLF = RPK / ASK  
deviation in % pts

<sup>3)</sup> deviation in % pts

## Traffic Statistics September 2003 LX Scheduled Services



	September			Cumulative		
	2003	2002		2003	2002	
<b>Number of Passengers <sup>1)</sup></b>						
Europe	711'750	886'302	-19.7%	6'148'992	7'094'153	-13.3%
Intercontinental	228'879	267'131	-14.3%	2'082'964	1'560'310	33.5%
Total	940'629	1'153'433	-18.4%	8'231'956	8'654'463	-4.9%
<b>Flights</b>						
Europe	13'288	17'959	-26.0%	134'993	156'962	-14.0%
Intercontinental	1'676	1'859	-9.8%	15'675	11'346	38.2%
Total	14'964	19'818	-24.5%	150'668	168'308	-10.5%
<b>Available Seat km (ASK, in mio)</b>						
Europe	811	1'080	-24.9%	8'092	9'432	-14.2%
Intercontinental	1'878	2'089	-10.1%	17'821	12'767	39.6%
Total	2'689	3'169	-15.1%	25'913	22'199	16.7%
<b>Revenue Passenger km (RPK, in mio)</b>						
Europe	553	689	-19.8%	4'776	5'476	-12.8%
Intercontinental	1'465	1'760	-16.7%	13'774	10'297	33.8%
Total	2'018	2'449	-17.6%	18'549	15'773	17.6%
<b>Seat Load Factor (SLF, %) <sup>2)</sup></b>						
Europe	68.2%	63.8%	4.4%	59.0%	58.1%	1.0%
Intercontinental	78.0%	84.2%	-6.2%	77.3%	80.6%	-3.4%
Total	75.0%	77.3%	-2.3%	71.6%	71.0%	0.5%
<b>Freight Load Factor Volume (FLF, %) <sup>3)</sup></b>						
Intercontinental	85.2%	86.9%	-1.7%	83.8%	83.0%	0.8%
<b>Freight Tonnes Kilometers (FTK, in 1000)</b>						
Intercontinental	111'664	111'190	0.4%	977'758	692'376	41.2%

<sup>1)</sup> Revenue Passengers

<sup>2)</sup> SLF = RPK / ASK  
deviation in % pts

<sup>3)</sup> deviation in % pts

## Traffic Statistics October 2003 LX Scheduled Services



	October			Cumulative		
	2003	2002		2003	2002	
<b>Number of Passengers <sup>1)</sup></b>						
Europe	727'741	847'411	-14.1%	6'876'733	7'941'564	-13.4%
Intercontinental	238'261	269'482	-11.6%	2'321'225	1'829'792	26.9%
Total	966'002	1'116'893	-13.5%	9'197'958	9'771'356	-5.9%
<b>Flights</b>						
Europe	12'801	18'446	-30.6%	147'794	175'408	-15.7%
Intercontinental	1'707	1'924	-11.3%	17'382	13'270	31.0%
Total	14'508	20'370	-28.8%	165'176	188'678	-12.5%
<b>Available Seat km (ASK, in mio)</b>						
Europe	807	1'091	-26.0%	8'899	10'523	-15.4%
Intercontinental	1'960	2'124	-7.7%	19'781	14'891	32.8%
Total	2'767	3'214	-13.9%	28'680	25'414	12.9%
<b>Revenue Passenger km (RPK, in mio)</b>						
Europe	557	647	-13.9%	5'333	6'123	-12.9%
Intercontinental	1'601	1'763	-9.2%	15'375	12'060	27.5%
Total	2'159	2'411	-10.5%	20'708	18'183	13.9%
<b>Seat Load Factor (SLF, %) <sup>2)</sup></b>						
Europe	69.0%	59.3%	9.7%	59.9%	58.2%	1.7%
Intercontinental	81.7%	83.0%	-1.3%	77.7%	81.0%	-3.3%
Total	78.0%	75.0%	3.0%	72.2%	71.5%	0.7%
<b>Freight Load Factor Volume (FLF, %) <sup>3)</sup></b>						
Intercontinental	85.5%	87.9%	-2.4%	83.9%	83.7%	0.2%
<b>Freight Tonnes Kilometers (FTK, in 1000)</b>						
Intercontinental	104'207	121'872	-14.5%	1'081'965	814'248	33%

<sup>1)</sup> Revenue Passengers

<sup>2)</sup> SLF = RPK / ASK  
deviation in % pts

<sup>3)</sup> deviation in % pts

## Traffic Statistics November 2003 LX Scheduled Services



	November			Cumulative		
	2003	2002		2003	2002	
<b>Number of Passengers <sup>1)</sup></b>						
Europe	533'209	671'034	-20.5%	7'409'942	8'612'598	-14.0%
Intercontinental	186'914	234'764	-20.4%	2'508'139	2'064'556	21.5%
Total	720'123	905'798	-20.5%	9'918'081	10'677'154	-7.1%
<b>Flights</b>						
Europe	10'510	17'443	-39.7%	158'304	192'851	-17.9%
Intercontinental	1'417	1'800	-21.3%	18'799	15'070	24.7%
Total	11'927	19'243	-38.0%	177'103	207'921	-14.8%
<b>Available Seat km (ASK, in mio)</b>						
Europe	691	1'025	-32.6%	9'590	11'548	-17.0%
Intercontinental	1'691	2'019	-16.3%	21'471	16'910	27.0%
Total	2'382	3'044	-21.8%	31'062	28'458	9.1%
<b>Revenue Passenger km (RPK, in mio)</b>						
Europe	392	506	-22.5%	5'725	6'629	-13.6%
Intercontinental	1'319	1'579	-16.5%	16'694	13'639	22.4%
Total	1'711	2'085	-17.9%	22'419	20'268	10.6%
<b>Seat Load Factor (SLF, %) <sup>2)</sup></b>						
Europe	56.8%	49.4%	7.4%	59.7%	57.4%	2.3%
Intercontinental	78.0%	78.2%	-0.2%	77.8%	80.7%	-2.9%
Total	71.8%	68.5%	3.3%	72.2%	71.2%	1.0%
<b>Estimate Freight Load Factor Volume (FLF, %) <sup>3)</sup></b>						
Intercontinental	86.9%	86.1%	0.8%	84.1%	84.0%	0.1%
<b>Estimate Freight Tonnes Kilometers (FTK, in 1000)</b>						
Intercontinental	103'483	115'990	-10.8%	1'185'448	930'238	27.4%

<sup>1)</sup> Revenue Passengers

<sup>2)</sup> SLF = RPK / ASK  
deviation in % pts

<sup>3)</sup> deviation in % pts

## Traffic Statistics December 2003 LX Scheduled Services



Swiss  
International  
Air Lines

	December		Cumulative	
	2003	2002	2003	2002
<b>Number of Passengers <sup>1)</sup></b>				
Europe	655'714		9'268'312	
Intercontinental	236'885		2'301'441	
Total	892'599		11'569'753	
<b>Flights</b>				
Europe	16'866		209'717	
Intercontinental	1'826		16'896	
Total	18'692		226'613	
<b>Available Seat km (ASK, in mio)</b>				
Europe	1'009		12'557	
Intercontinental	2'053		18'963	
Total	3'061		31'520	
<b>Revenue Passenger km (RPK, in mio)</b>				
Europe	511		7'141	
Intercontinental	1'591		15'230	
Total	2'102		22'371	
<b>Seat Load Factor (SLF, %) <sup>2)</sup></b>				
Europe	50.7%		56.9%	
Intercontinental	77.5%		80.3%	
Total	68.7%		71.0%	
<b>Freight Load Factor Volume (FLF, %) <sup>3)</sup></b>				
Intercontinental	83.8%		84.0%	
<b>Freight Tonnes Kilometers (FTK, in 1000)</b>				
Intercontinental	110'052		1'040'290	

<sup>1)</sup> Revenue Passengers

<sup>2)</sup> SLF = RPK / ASK  
deviation in % pts

<sup>3)</sup> deviation in % pts