

SWISS traffic statistics

January-December 2003



Positive traffic trends at the end of the year: network modifications and *Swiss in Europe* have their effect

SWISS posted a systemwide seat load factor of an encouraging 74.6% for December 2003 – a clear improvement on the 68.7% recorded for the same month in 2002. While total production for the month was 21.1% below its prior-year equivalent in available-seat-kilometre (ASK) terms, SWISS stemmed the associated revenue-passenger-kilometre (RPK) decline to 14.2%. The modifications to the route network and the new *Swiss in Europe* business concept which was launched at the end of August 2003 are clearly having their effect. SWISS carried a total of 10.66 million passengers in 2003 and posted a systemwide seat load factor of 72.4% for the year.

Worldwide demand for air transport services in 2003 was substantially affected by the war in Iraq and the outbreak of SARS. A general reluctance to travel was exacerbated by the peak of the SARS epidemic, especially in Far Eastern markets.

Despite the adverse business environment, seat load factors on SWISS's *European* routes showed several positive trends. Seat load factor on European services for 2003 as a whole amounted to 59.6%, an increase of 2.7 percentage points on its prior-year equivalent. Annual seat load factor for **intercontinental** services stood at 78.0%, a 2.3-percentage-point decline on the 2002 result. SWISS posted a systemwide seat load factor of 72.4% for the year – a 1.4-percentage-point improvement on the previous year.

SWISS thus managed to increase the seat load factors on its flights – despite a difficult operating environment and despite sluggish demand throughout the air transport sector. The timely modifications to its route network and the launch of the new *Swiss in Europe* business concept at the end of August were key contributors to this favourable result.

SWISS Executive Management had already drawn up plans to resize the company's route network in response to the growing threat of armed conflict in Iraq. These plans were consistently implemented following the outbreak of hostilities, i.e. with the cutover to the 2003 summer schedules. The SWISS route network was then further modified in the course of the year. By December, European services had been reduced by 31.1% compared to their prior-year equivalents in ASK terms. Intercontinental services were reduced by 16.1% over the same period.

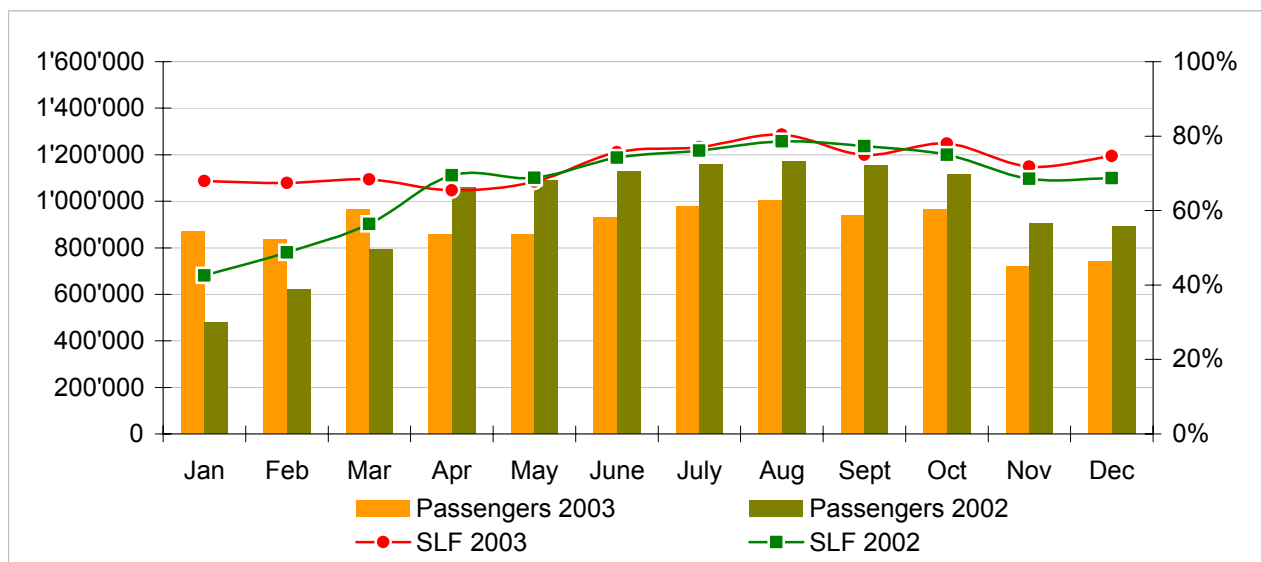
The improvement seen in load factors since October is especially worthy of note. The trend is due partly to the consistent resizing of the SWISS route network and partly to the adoption of the new *Swiss in Europe* business concept, which had an increasing beneficial impact on traffic levels towards the end of the year. The October seat load factor for European services was a 9.7-percentage-point improvement on the same month in 2002; and European seat load factors for November and December both exceeded their prior-year equivalents by 7.4 percentage points. Seat load factors for SWISS's intercontinental services also recovered in October and November, though they still remained below prior-year levels. But the substantial 81.3% intercontinental seat load factor recorded for December was a 3.8-percentage-point improvement on the same month in 2002.

Traffic Statistics December 2003 LX Scheduled Services



	Passengers Europe	Passengers Intercontinental	Passengers Total	SLF Europe	SLF Intercontinental	SLF Total
Jan	623'788	245'067	868'855	46.1%	78.9%	68.0%
Feb	622'717	212'633	835'350	48.7%	77.0%	67.4%
Mar	735'116	230'492	965'608	54.0%	75.6%	68.4%
Apr	647'474	209'610	857'084	57.8%	68.7%	65.4%
May	643'856	211'550	855'406	59.0%	71.6%	67.7%
Jun	700'468	230'101	930'569	66.0%	79.9%	75.7%
Jul	727'706	249'520	977'226	67.6%	81.0%	77.1%
Aug	736'117	265'112	1'001'229	69.9%	84.8%	80.4%
Sep	711'750	228'879	940'629	68.2%	78.0%	75.0%
Oct	727'741	238'261	966'002	69.0%	81.7%	78.0%
Nov	533'209	186'914	720'123	56.8%	78.0%	71.8%
Dec	542'537	200'097	742'634	58.1%	81.3%	74.6%

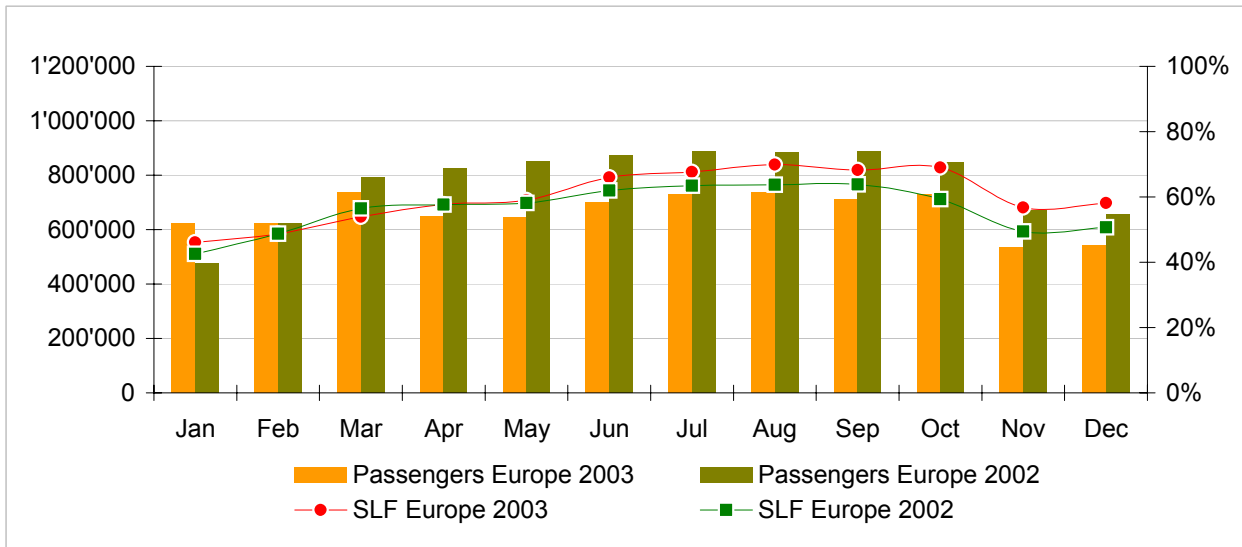
Comparison Passengers and Seat Load Factor (SLF %) versus prior year



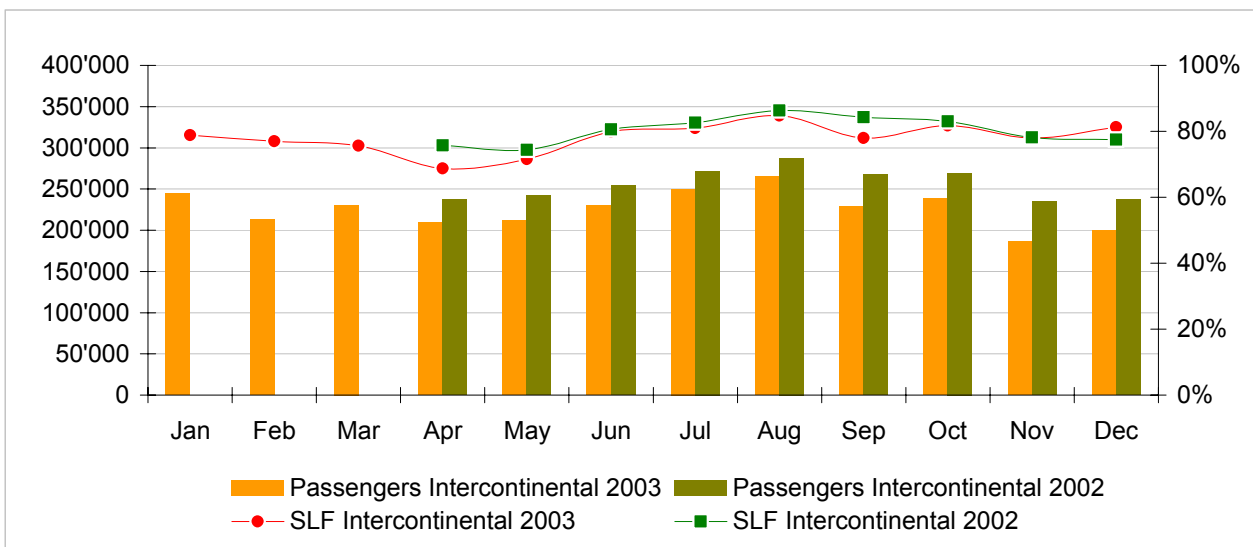
Next updates:

- January 04 figures February 10th, 2004
- February 04 figures March 10th, 2004
- March 04 figures April 13th, 2004

Passengers and Seat Load Factor (SLF %) European Routes
Comparison versus prior year



Passengers and Seat Load Factor (SLF %) Intercontinental Routes
Comparison versus prior year



Traffic Statistics January 2003 LX Scheduled Services



Swiss
International
Air Lines

	January			Cumulative		
	2003	2002		2003	2002	
Number of Passengers ¹⁾						
Europe	623'788	477'227	30.7%	623'788	477'227	30.7%
Intercontinental	245'067	0		245'067	0	
Total	868'855	477'227	82.1%	868'855	477'227	82.1%
Flights						
Europe	17'314	15'335	12.9%	17'314	15'335	12.9%
Intercontinental	1'836	0		1'836	0	
Total	19'150	15'335	24.9%	19'150	15'335	24.9%
Available Seat km (ASK, in mill)						
Europe	1'043	773	35.0%	1'043	773	35.0%
Intercontinental	2'094	0		2'094	0	
Total	3'136	773	305.9%	3'136	773	305.9%
Revenue Passenger km (RPK, in mill)						
Europe	480	329	46.0%	480	329	46.0%
Intercontinental	1'651	0		1'651	0	
Total	2'131	329	548.0%	2'131	329	548.0%
Seat Load Factor (SLF %) ²⁾						
Europe	46.1%	42.6%	3.5%	46.1%	42.6%	3.5%
Intercontinental	78.9%	-		78.9%	-	
Total	68.0%	42.6%	25.4%	68.0%	42.6%	25.4%
Freight Load Factor (%) ³⁾						
Intercontinental	77.9%	0		83.4%	0	
Freight Tonnes Kilometers (FTK, in 1000)						
Intercontinental	106'301	0		106'301	0	

¹⁾ Revenue Passengers

²⁾ SLF = RPK / ASK
deviation in % pts

³⁾ Including mail
deviation in % pts

Traffic Statistics February 2003 LX Scheduled Services



Swiss
International
Air Lines

	February			Cumulative		
	2003	2002		2003	2002	
Number of Passengers ¹⁾						
Europe	622'717	621'865	0.1%	1'246'505	1'099'092	13.4%
Intercontinental	212'633	0		457'700	0	
Total	835'350	621'865	34.3%	1'704'205	1'099'092	55.1%
Flights						
Europe	16'171	15'898	1.7%	33'485	31'233	7.2%
Intercontinental	1'642	0		3'478	0	
Total	17'813	15'898	12.0%	36'963	31'233	18.3%
Available Seat km (ASK, in mill)						
Europe	957	928	3.2%	2'000	1'700	17.7%
Intercontinental	1'875	0		3'968	0	
Total	2'832	928	205.3%	5'968	1'700	251.1%
Revenue Passenger km (RPK, in mill)						
Europe	466	452	3.2%	947	781	21.2%
Intercontinental	1'443	0		3'094	0	
Total	1'910	452	322.6%	4'041	781	417.4%
Seat Load Factor (SLF %) ²⁾						
Europe	48.7%	48.7%	0.0%	47.3%	45.9%	1.4%
Intercontinental	77.0%	-		78.0%	-	
Total	67.4%	48.7%	18.7%	67.7%	45.9%	21.8%
Freight Load Factor (%) ³⁾						
Intercontinental	86.0%	0		83.6%	0	
Freight Tonnes Kilometers (FTK, in 1000)						
Intercontinental	108'934	0		215'235	0	

¹⁾ Revenue Passengers

²⁾ SLF = RPK / ASK
deviation in % pts

³⁾ Including mail
deviation in % pts

Traffic Statistics March 2003 LX Scheduled Services



	March			Cumulative		
	2003	2002		2003	2002	
Number of Passengers ¹⁾						
Europe	735'116	792'601	-7.3%	1'981'621	1'891'693	4.8%
Intercontinental	230'492	0		688'192	0	
Total	965'608	792'601	21.8%	2'669'813	1'891'693	41.1%
Flights						
Europe	17'770	17'593	1.0%	51'255	48'826	5.0%
Intercontinental	1'819	0		5'297	0	
Total	19'589	17'593	11.3%	56'552	48'826	15.8%
Available Seat km (ASK, in mill)						
Europe	1'044	1'105	-5.5%	3'044	2'805	8.5%
Intercontinental	2'087	0		6'056	0	
Total	3'132	1'105	183.5%	9'100	2'805	224.4%
Revenue Passenger km (RPK, in mill)						
Europe	563	623	-9.6%	1'510	1'404	7.6%
Intercontinental	1'578	0		4'672	0	
Total	2'141	623	243.6%	6'182	1'404	340.3%
Seat Load Factor (SLF %) ²⁾						
Europe	54.0%	56.4%	-2.5%	49.6%	50.1%	-0.5%
Intercontinental	75.6%	-		77.2%	-	
Total	68.4%	56.4%	12.0%	67.9%	50.1%	17.9%
Freight Load Factor (%) ³⁾						
Intercontinental	87.4%	0		83.9%	0	
Freight Tonnes Kilometers (FTK, in 1000)						
Intercontinental	120'393	0		335'628	0	

¹⁾ Revenue Passengers

²⁾ SLF = RPK / ASK
deviation in % pts

³⁾ Including mail
deviation in % pts

Traffic Statistics April 2003 LX Scheduled Services



Swiss
International
Air Lines

	April			Cumulative		
	2003	2002		2003	2002	
Number of Passengers ¹⁾						
Europe	647'474	823'402	-21.4%	2'629'095	2'715'095	-3.2%
Intercontinental	209'610	237'170	-11.6%	897'802	237'170	278.5%
Total	857'084	1'060'572	-19.2%	3'526'897	2'952'265	19.5%
Flights						
Europe	14'025	17'419	-19.5%	65'280	66'245	-1.5%
Intercontinental	1'727	1'852	-6.7%	7'024	1'852	279.3%
Total	15'752	19'271	-18.3%	72'304	68'097	6.2%
Available Seat km (ASK, in mill)						
Europe	867	1'087	-20.3%	3'911	3'892	0.5%
Intercontinental	2'010	2'075	-3.1%	8'066	2'075	288.8%
Total	2'877	3'162	-9.0%	11'977	5'967	100.7%
Revenue Passenger km (RPK, in mill)						
Europe	501	627	-20.1%	2'011	2'031	-1.0%
Intercontinental	1'381	1'570	-12.0%	6'054	1'570	285.5%
Total	1'882	2'197	-14.3%	8'065	3'601	124.0%
Seat Load Factor (SLF %) ²⁾						
Europe	57.8%	57.6%	0.2%	51.4%	52.2%	-0.8%
Intercontinental	68.7%	75.7%	-7.0%	75.1%	75.7%	-0.6%
Total	65.4%	69.5%	-4.1%	67.3%	60.4%	7.0%
Freight Load Factor (%) ³⁾						
Intercontinental	82.6%	79.2%	3.4%	83.8%	79.2%	4.6%
Freight Tonnes Kilometers (FTK, in 1000)						
Intercontinental	116'773	104'220	12.0%	452'401	104'220	334.1%

¹⁾ Revenue Passengers

²⁾ SLF = RPK / ASK
deviation in % pts

³⁾ Including mail
deviation in % pts

Traffic Statistics May 2003 LX Scheduled Services



Swiss
International
Air Lines

	May			Cumulative		
	2003	2002		2003	2002	
Number of Passengers ¹⁾						
Europe	643'856	849'032	-24.2%	3'272'951	3'564'127	-8.2%
Intercontinental	211'550	242'124	-12.6%	1'109'352	479'294	131.5%
Total	855'406	1'091'156	-21.6%	4'382'303	4'043'421	8.4%
Flights						
Europe	14'297	18'121	-21.1%	79'577	84'366	-5.7%
Intercontinental	1'715	1'918	-10.6%	8'739	3'770	131.8%
Total	16'012	20'039	-20.1%	88'316	88'136	0.2%
Available Seat km (ASK, in mill)						
Europe	846	1'129	-25.0%	4'757	5'021	-5.2%
Intercontinental	1'936	2'165	-10.6%	10'002	4'240	135.9%
Total	2'782	3'294	-15.5%	14'759	9'261	59.4%
Revenue Passenger km (RPK, in mill)						
Europe	499	656	-23.9%	2'510	2'686	-6.6%
Intercontinental	1'386	1'611	-14.0%	7'440	3'181	133.9%
Total	1'885	2'266	-16.8%	9'950	5'867	69.6%
Seat Load Factor (SLF %) ²⁾						
Europe	59.0%	58.1%	0.9%	52.8%	53.5%	-0.7%
Intercontinental	71.6%	74.4%	-2.8%	74.4%	75.0%	-0.7%
Total	67.7%	68.8%	-1.1%	67.4%	63.4%	4.1%
Freight Load Factor (%) ³⁾						
Intercontinental	85.5%	80.2%	5.3%	84.0%	79.7%	4.3%
Freight Tonnes Kilometers (FTK, in 1000)						
Intercontinental	110'594	116'131	-4.8%	562'995	220'351	155.5%

¹⁾ Revenue Passengers

²⁾ SLF = RPK / ASK
deviation in % pts

³⁾ Including mail
deviation in % pts

Traffic Statistics June 2003 LX Scheduled Services



Swiss
International
Air Lines

	June			Cumulative		
	2003	2002		2003	2002	
Number of Passengers ¹⁾						
Europe	700'468	871'989	-19.7%	3'973'419	4'436'116	-10.4%
Intercontinental	230'101	254'207	-9.5%	1'339'453	733'501	82.6%
Total	930'569	1'126'196	-17.4%	5'312'872	5'169'617	2.8%
Flights						
Europe	13'978	17'799	-21.5%	93'555	102'165	-8.4%
Intercontinental	1'686	1'863	-9.5%	10'425	5'633	85.1%
Total	15'664	19'662	-20.3%	103'980	107'798	-3.5%
Available Seat km (ASK, in mill)						
Europe	828	1'099	-24.7%	5'585	6'120	-8.7%
Intercontinental	1'892	2'100	-9.9%	11'894	6'339	87.6%
Total	2'719	3'199	-15.0%	17'479	12'459	40.3%
Revenue Passenger km (RPK, in mill)						
Europe	546	681	-19.8%	3'056	3'367	-9.2%
Intercontinental	1'511	1'692	-10.7%	8'951	4'873	83.7%
Total	2'057	2'373	-13.3%	12'007	8'240	45.7%
Seat Load Factor (SLF %) ²⁾						
Europe	66.0%	62.0%	4.0%	54.7%	55.0%	-0.3%
Intercontinental	79.9%	80.6%	-0.7%	75.3%	76.9%	-1.6%
Total	75.7%	74.2%	1.5%	68.7%	66.1%	2.6%
Freight Load Factor (%) ³⁾						
Intercontinental	84.5%	86.0%	-1.5%	84.0%	81.8%	2.2%
Freight Tonnes Kilometers (FTK, in 1000)						
Intercontinental	106'280	128'052	-17.0%	669'275	348'403	92.1%

¹⁾ Revenue Passengers

²⁾ SLF = RPK / ASK
deviation in % pts

³⁾ Including mail
deviation in % pts

Traffic Statistics July 2003 LX Scheduled Services



	July			Cumulative		
	2003	2002		2003	2002	
Number of Passengers ¹⁾						
Europe	727'706	886'661	-17.9%	4'701'125	5'322'777	-11.7%
Intercontinental	249'520	271'995	-8.3%	1'588'973	1'005'496	58.0%
Total	977'226	1'158'656	-15.7%	6'290'098	6'328'273	-0.6%
Flights						
Europe	14'286	18'448	-22.6%	107'841	120'613	-10.6%
Intercontinental	1'771	1'924	-8.0%	12'196	7'557	61.4%
Total	16'057	20'372	-21.2%	120'037	128'170	-6.3%
Available Seat km (ASK, in mill)						
Europe	850	1'117	-23.9%	6'435	7'237	-11.1%
Intercontinental	2'015	2'171	-7.2%	13'909	8'510	63.4%
Total	2'865	3'287	-12.9%	20'343	15'747	29.2%
Revenue Passenger km (RPK, in mill)						
Europe	575	709	-18.9%	3'631	4'076	-10.9%
Intercontinental	1'633	1'793	-8.9%	10'584	6'666	58.8%
Total	2'207	2'502	-11.8%	14'215	10'742	32.3%
Seat Load Factor (SLF %) ²⁾						
Europe	67.6%	63.5%	4.1%	56.4%	56.3%	0.1%
Intercontinental	81.0%	82.6%	-1.6%	76.1%	78.3%	-2.2%
Total	77.1%	76.1%	0.9%	69.9%	68.2%	1.7%
Freight Load Factor (%) ³⁾						
Intercontinental	83.7%	83.7%	0.0%	84.0%	82.3%	1.7%
Freight Tonnes Kilometers (FTK, in 1000)						
Intercontinental	99'370	120'594	-17.6%	768'645	468'997	63.9%

¹⁾ Revenue Passengers

²⁾ SLF = RPK / ASK
deviation in % pts

³⁾ Including mail
deviation in % pts

Traffic Statistics August 2003 LX Scheduled Services



	August			Cumulative		
	2003	2002		2003	2002	
Number of Passengers ¹⁾						
Europe	736'117	885'074	-16.8%	5'437'242	6'207'851	-12.4%
Intercontinental	265'112	287'683	-7.8%	1'854'085	1'293'179	43.4%
Total	1'001'229	1'172'757	-14.6%	7'291'327	7'501'030	-2.8%
Flights						
Europe	13'864	18'390	-24.6%	121'705	139'003	-12.4%
Intercontinental	1'803	1'930	-6.6%	13'999	9'487	47.6%
Total	15'667	20'320	-22.9%	135'704	148'490	-8.6%
Available Seat km (ASK, in mill)						
Europe	847	1'115	-24.1%	7'282	8'352	-12.8%
Intercontinental	2'034	2'168	-6.2%	15'943	10'678	49.3%
Total	2'881	3'284	-12.3%	23'224	19'030	22.0%
Revenue Passenger km (RPK, in mill)						
Europe	592	711	-16.7%	4'223	4'787	-11.8%
Intercontinental	1'725	1'871	-7.8%	12'309	8'537	44.2%
Total	2'317	2'581	-10.3%	16'531	13'324	24.1%
Seat Load Factor (SLF %) ²⁾						
Europe	69.9%	63.7%	6.2%	58.0%	57.3%	0.7%
Intercontinental	84.8%	86.3%	-1.5%	77.2%	79.9%	-2.7%
Total	80.4%	78.6%	1.8%	71.2%	70.0%	1.2%
Freight Load Factor (%) ³⁾						
Intercontinental	79.7%	82.1%	-2.4%	83.7%	82.2%	1.5%
Freight Tonnes Kilometers (FTK, in 1000)						
Intercontinental	97'449	112'189	-13.1%	866'094	581'186	49.0%

¹⁾ Revenue Passengers

²⁾ SLF = RPK / ASK
deviation in % pts

³⁾ Including mail
deviation in % pts

Traffic Statistics September 2003 LX Scheduled Services



	September			Cumulative		
	2003	2002		2003	2002	
Number of Passengers ¹⁾						
Europe	711'750	886'302	-19.7%	6'148'992	7'094'153	-13.3%
Intercontinental	228'879	267'131	-14.3%	2'082'964	1'560'310	33.5%
Total	940'629	1'153'433	-18.4%	8'231'956	8'654'463	-4.9%
Flights						
Europe	13'288	17'959	-26.0%	134'993	156'962	-14.0%
Intercontinental	1'676	1'859	-9.8%	15'675	11'346	38.2%
Total	14'964	19'818	-24.5%	150'668	168'308	-10.5%
Available Seat km (ASK, in mill)						
Europe	811	1'080	-24.9%	8'092	9'432	-14.2%
Intercontinental	1'878	2'089	-10.1%	17'821	12'767	39.6%
Total	2'689	3'169	-15.1%	25'913	22'199	16.7%
Revenue Passenger km (RPK, in mill)						
Europe	553	689	-19.8%	4'776	5'476	-12.8%
Intercontinental	1'465	1'760	-16.7%	13'774	10'297	33.8%
Total	2'018	2'449	-17.6%	18'549	15'773	17.6%
Seat Load Factor (SLF %) ²⁾						
Europe	68.2%	63.8%	4.4%	59.0%	58.1%	1.0%
Intercontinental	78.0%	84.2%	-6.2%	77.3%	80.6%	-3.4%
Total	75.0%	77.3%	-2.3%	71.6%	71.0%	0.5%
Freight Load Factor (%) ³⁾						
Intercontinental	85.2%	86.9%	-1.7%	83.8%	83.0%	0.8%
Freight Tonnes Kilometers (FTK, in 1000)						
Intercontinental	111'664	111'190	0.4%	977'758	692'376	41.2%

¹⁾ Revenue Passengers

²⁾ SLF = RPK / ASK
deviation in % pts

³⁾ Including mail
deviation in % pts

Traffic Statistics October 2003 LX Scheduled Services



	October			Cumulative		
	2003	2002		2003	2002	
Number of Passengers ¹⁾						
Europe	727'741	847'411	-14.1%	6'876'733	7'941'564	-13.4%
Intercontinental	238'261	269'482	-11.6%	2'321'225	1'829'792	26.9%
Total	966'002	1'116'893	-13.5%	9'197'958	9'771'356	-5.9%
Flights						
Europe	12'801	18'446	-30.6%	147'794	175'408	-15.7%
Intercontinental	1'707	1'924	-11.3%	17'382	13'270	31.0%
Total	14'508	20'370	-28.8%	165'176	188'678	-12.5%
Available Seat km (ASK, in mill)						
Europe	807	1'091	-26.0%	8'899	10'523	-15.4%
Intercontinental	1'960	2'124	-7.7%	19'781	14'891	32.8%
Total	2'767	3'214	-13.9%	28'680	25'414	12.9%
Revenue Passenger km (RPK, in mill)						
Europe	557	647	-13.9%	5'333	6'123	-12.9%
Intercontinental	1'601	1'763	-9.2%	15'375	12'060	27.5%
Total	2'159	2'411	-10.5%	20'708	18'183	13.9%
Seat Load Factor (SLF %) ²⁾						
Europe	69.0%	59.3%	9.7%	59.9%	58.2%	1.7%
Intercontinental	81.7%	83.0%	-1.3%	77.7%	81.0%	-3.3%
Total	78.0%	75.0%	3.0%	72.2%	71.5%	0.7%
Freight Load Factor (%) ³⁾						
Intercontinental	85.5%	87.9%	-2.4%	83.9%	83.7%	0.2%
Freight Tonnes Kilometers (FTK, in 1000)						
Intercontinental	104'207	121'872	-14.5%	1'081'965	814'248	33%

¹⁾ Revenue Passengers

²⁾ SLF = RPK / ASK
deviation in % pts

³⁾ Including mail
deviation in % pts

Traffic Statistics November 2003 LX Scheduled Services



	November			Cumulative		
	2003	2002		2003	2002	
Number of Passengers ¹⁾						
Europe	533'209	671'034	-20.5%	7'409'942	8'612'598	-14.0%
Intercontinental	186'914	234'764	-20.4%	2'508'139	2'064'556	21.5%
Total	720'123	905'798	-20.5%	9'918'081	10'677'154	-7.1%
Flights						
Europe	10'510	17'443	-39.7%	158'304	192'851	-17.9%
Intercontinental	1'417	1'800	-21.3%	18'799	15'070	24.7%
Total	11'927	19'243	-38.0%	177'103	207'921	-14.8%
Available Seat km (ASK, in mill)						
Europe	691	1'025	-32.6%	9'590	11'548	-17.0%
Intercontinental	1'691	2'019	-16.3%	21'471	16'910	27.0%
Total	2'382	3'044	-21.8%	31'062	28'458	9.1%
Revenue Passenger km (RPK, in mill)						
Europe	392	506	-22.5%	5'725	6'629	-13.6%
Intercontinental	1'319	1'579	-16.5%	16'694	13'639	22.4%
Total	1'711	2'085	-17.9%	22'419	20'268	10.6%
Seat Load Factor (SLF %) ²⁾						
Europe	56.8%	49.4%	7.4%	59.7%	57.4%	2.3%
Intercontinental	78.0%	78.2%	-0.2%	77.8%	80.7%	-2.9%
Total	71.8%	68.5%	3.3%	72.2%	71.2%	1.0%
Freight Load Factor (%) ³⁾						
Intercontinental	87.7%	86.1%	1.6%	84.1%	84.0%	0.1%
Freight Tonnes Kilometers (FTK, in 1000)						
Intercontinental	98'420	115'990	-15.1%	1'180'385	930'238	26.9%

¹⁾ Revenue Passengers

²⁾ SLF = RPK / ASK
deviation in % pts

³⁾ Including mail
deviation in % pts

Traffic Statistics December 2003 LX Scheduled Services



	December			Cumulative		
	2003	2002		2003	2002	
Number of Passengers ¹⁾						
Europe	542'537	655'714	-17.3%	7'952'479	9'268'312	-14.2%
Intercontinental	200'097	236'885	-15.5%	2'708'236	2'301'441	17.7%
Total	742'634	892'599	-16.8%	10'660'715	11'569'753	-7.9%
Flights						
Europe	10'535	16'866	-37.5%	168'839	209'717	-19.5%
Intercontinental	1'448	1'826	-20.7%	20'247	16'896	19.8%
Total	11'983	18'692	-35.9%	189'086	226'613	-16.6%
Available Seat km (ASK, in mill)						
Europe	695	1'009	-31.1%	10'285	12'557	-18.1%
Intercontinental	1'722	2'053	-16.1%	23'193	18'963	22.3%
Total	2'417	3'061	-21.1%	33'478	31'520	6.2%
Revenue Passenger km (RPK, in mill)						
Europe	403	511	-21.1%	6'128	7'141	-14.2%
Intercontinental	1'401	1'591	-12.0%	18'095	15'230	18.8%
Total	1'804	2'102	-14.2%	24'223	22'371	8.3%
Seat Load Factor (SLF %) ²⁾						
Europe	58.1%	50.7%	7.4%	59.6%	56.9%	2.7%
Intercontinental	81.3%	77.5%	3.8%	78.0%	80.3%	-2.3%
Total	74.6%	68.7%	5.9%	72.4%	71.0%	1.4%
Estimate Freight Load Factor (%) ³⁾						
Intercontinental	86.7%	83.8%	2.9%	84.2%	84.0%	0.2%
Estimate Freight Tonnes Kilometers (FTK, in 1000)						
Intercontinental	94'363	110'052	-14.3%	1'274'748	1'040'290	22.5%

¹⁾ Revenue Passengers

²⁾ SLF = RPK / ASK
deviation in % pts

³⁾ Including mail
deviation in % pts