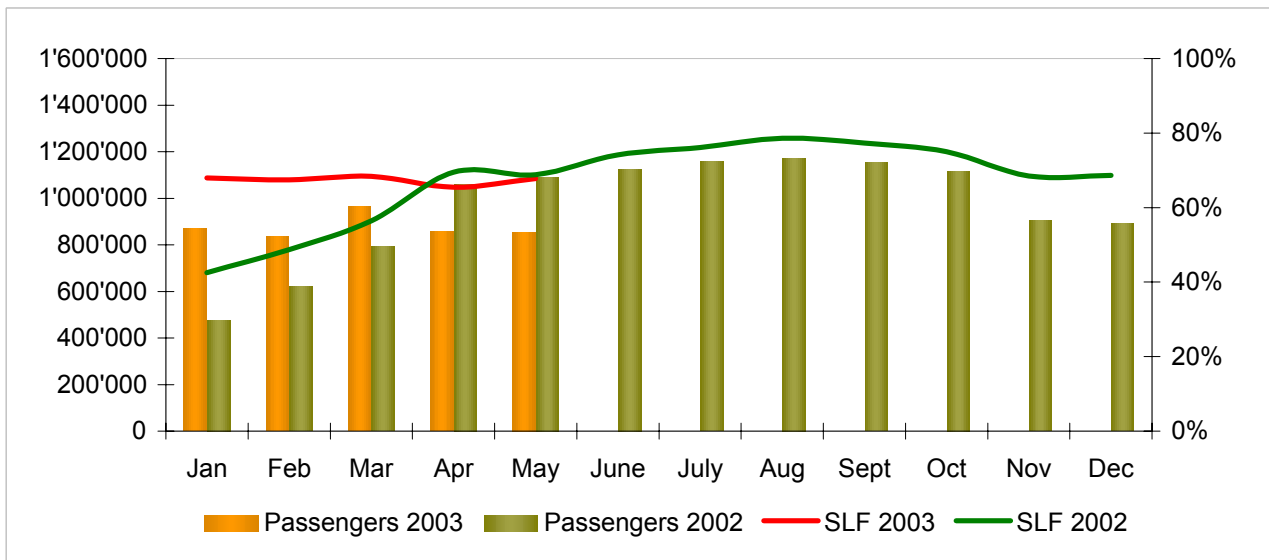


Traffic Statistics May 2003 LX Scheduled Services



| | Passengers Europe | Passengers Intercontinental | Total Passengers | SLF Europe | SLF Intercontinental | Total SLF |
|-----|-------------------|-----------------------------|------------------|------------|----------------------|-----------|
| Jan | 623'788 | 245'067 | 868'855 | 46.1% | 78.9% | 68.0% |
| Feb | 622'717 | 212'633 | 835'350 | 48.7% | 77.0% | 67.4% |
| Mar | 735'116 | 230'492 | 965'608 | 54.0% | 75.6% | 68.4% |
| Apr | 647'474 | 209'610 | 857'084 | 57.8% | 68.7% | 65.4% |
| May | 643'856 | 211'550 | 855'406 | 59.0% | 71.6% | 67.7% |
| Jun | | | | | | |
| Jul | | | | | | |
| Aug | | | | | | |
| Sep | | | | | | |
| Oct | | | | | | |
| Nov | | | | | | |
| Dec | | | | | | |

Comparison Passengers and Seat Load Factor (SLF) versus prior year



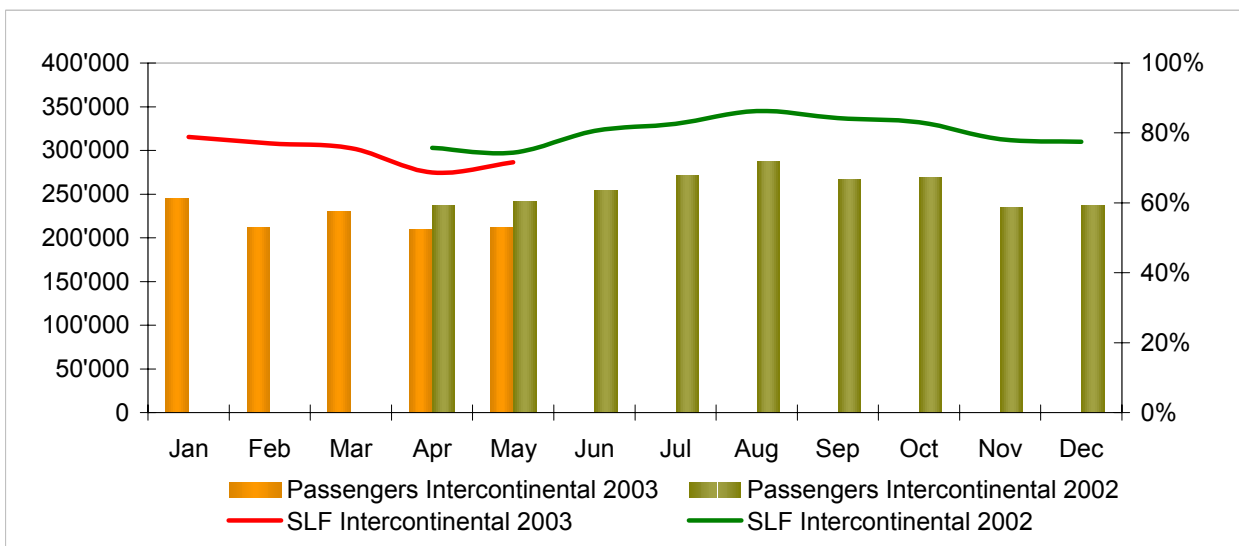
Next updates:

- June figures July 11th, 2003
- July figures August 8th, 2003

Passengers and Seat Load Factor (SLF) European Business
 Comparison versus prior year



Passengers and Seat Load Factor Intercontinental Business
 Comparison versus prior year



Traffic Statistics January 2003 LX Scheduled Services



Swiss
International
Air Lines

| | January | | | Cumulative | | |
|---|---------|---------|--------|------------|---------|--------|
| | 2003 | 2002 | | 2003 | 2002 | |
| Number of Passengers ¹⁾ | | | | | | |
| Europe | 623'788 | 477'227 | 30.7% | 623'788 | 477'227 | 30.7% |
| Intercontinental | 245'067 | 0 | | 245'067 | 0 | |
| Total | 868'855 | 477'227 | 82.1% | 868'855 | 477'227 | 82.1% |
| Flights | | | | | | |
| Europe | 17'314 | 15'335 | 12.9% | 17'314 | 15'335 | 12.9% |
| Intercontinental | 1'836 | 0 | | 1'836 | 0 | |
| Total | 19'150 | 15'335 | 24.9% | 19'150 | 15'335 | 24.9% |
| Available Seat km (ASK, in mio) | | | | | | |
| Europe | 1'043 | 773 | 35.0% | 1'043 | 773 | 35.0% |
| Intercontinental | 2'094 | 0 | | 2'094 | 0 | |
| Total | 3'136 | 773 | 305.9% | 3'136 | 773 | 305.9% |
| Revenue Passenger km (RPK, in mio) | | | | | | |
| Europe | 480 | 329 | 46.0% | 480 | 329 | 46.0% |
| Intercontinental | 1'651 | 0 | | 1'651 | 0 | |
| Total | 2'131 | 329 | 548.0% | 2'131 | 329 | 548.0% |
| Seat Load Factor (SLF %) ²⁾ | | | | | | |
| Europe | 46.1% | 42.6% | 3.5% | 46.1% | 42.6% | 3.5% |
| Intercontinental | 78.9% | 0.0% | | 78.9% | 0 | |
| Total | 68.0% | 42.6% | 25.4% | 68.0% | 42.6% | 25.4% |

¹⁾ Revenue Passengers

²⁾ SLF = RPK / ASK

Traffic Statistics February 2003 LX Scheduled Services



Swiss
International
Air Lines

| | February | | | Cumulative | | |
|---|----------|---------|--------|------------|---------|--------|
| | 2003 | 2002 | | 2003 | 2002 | |
| Number of Passengers ¹⁾ | | | | | | |
| Europe | 622'717 | 621'865 | 0.1% | 1'246'505 | 621'865 | 100.4% |
| Intercontinental | 212'633 | 0 | | 457'700 | 0 | |
| Total | 835'350 | 621'865 | 34.3% | 1'704'205 | 621'865 | 174.0% |
| Flights | | | | | | |
| Europe | 16'171 | 15'898 | 1.7% | 33'485 | 15'898 | 110.6% |
| Intercontinental | 1'642 | 0 | | 3'478 | 0 | |
| Total | 17'813 | 15'898 | 12.0% | 36'963 | 15'898 | 132.5% |
| Available Seat km (ASK, in mio) | | | | | | |
| Europe | 957 | 928 | 3.2% | 2'000 | 928 | 115.6% |
| Intercontinental | 1'875 | 0 | | 3'968 | 0 | |
| Total | 2'832 | 928 | 205.3% | 5'968 | 928 | 543.3% |
| Revenue Passenger km (RPK, in mio) | | | | | | |
| Europe | 466 | 452 | 3.2% | 947 | 452 | 109.5% |
| Intercontinental | 1'443 | 0 | | 3'094 | 0 | |
| Total | 1'910 | 452 | 322.6% | 4'041 | 452 | 794.2% |
| Seat Load Factor (SLF %) ²⁾ | | | | | | |
| Europe | 48.7% | 48.7% | 0.0% | 47.3% | 48.7% | -1.4% |
| Intercontinental | 77.0% | 0.0% | | 78.0% | 0 | |
| Total | 67.4% | 48.7% | 18.7% | 67.7% | 48.7% | 19.0% |

¹⁾ Revenue Passengers

²⁾ SLF = RPK / ASK

Traffic Statistics March 2003 LX Scheduled Services



Swiss
International
Air Lines

| | March | | | Cumulative | | |
|---|---------|---------|--------|------------|-----------|--------|
| | 2003 | 2002 | | 2003 | 2002 | |
| Number of Passengers ¹⁾ | | | | | | |
| Europe | 735'116 | 792'601 | -7.3% | 1'981'621 | 1'891'693 | 4.8% |
| Intercontinental | 230'492 | 0 | | 688'192 | 0 | |
| Total | 965'608 | 792'601 | 21.8% | 2'669'813 | 1'891'693 | 41.1% |
| Flights | | | | | | |
| Europe | 17'770 | 17'593 | 1.0% | 51'255 | 48'826 | 5.0% |
| Intercontinental | 1'819 | 0 | | 5'297 | 0 | |
| Total | 19'589 | 17'593 | 11.3% | 56'552 | 48'826 | 15.8% |
| Available Seat km (ASK, in mio) | | | | | | |
| Europe | 1'044 | 1'105 | -5.5% | 3'044 | 2'805 | 8.5% |
| Intercontinental | 2'087 | 0 | | 6'056 | 0 | |
| Total | 3'132 | 1'105 | 183.5% | 9'100 | 2'805 | 224.4% |
| Revenue Passenger km (RPK, in mio) | | | | | | |
| Europe | 563 | 623 | -9.6% | 1'510 | 1'404 | 7.6% |
| Intercontinental | 1'578 | 0 | | 4'672 | 0 | |
| Total | 2'141 | 623 | 243.6% | 6'182 | 1'404 | 340.3% |
| Seat Load Factor (SLF %) ²⁾ | | | | | | |
| Europe | 54.0% | 56.4% | -2.5% | 49.6% | 50.1% | -0.5% |
| Intercontinental | 75.6% | - | | 77.2% | - | |
| Total | 68.4% | 56.4% | 12.0% | 67.9% | 50.1% | 17.9% |

¹⁾ Revenue Passengers

²⁾ SLF = RPK / ASK

Traffic Statistics April 2003 LX Scheduled Services



| | April | | | Cumulative | | |
|---|---------|-----------|--------|------------|-----------|--------|
| | 2003 | 2002 | | 2003 | 2002 | |
| Number of Passengers ¹⁾ | | | | | | |
| Europe | 647'474 | 823'402 | -21.4% | 2'629'095 | 2'715'095 | -3.2% |
| Intercontinental | 209'610 | 237'170 | -11.6% | 897'802 | 237'170 | 278.5% |
| Total | 857'084 | 1'060'572 | -19.2% | 3'526'897 | 2'952'265 | 19.5% |
| Flights | | | | | | |
| Europe | 14'025 | 17'419 | -19.5% | 65'280 | 66'245 | -1.5% |
| Intercontinental | 1'727 | 1'852 | -6.7% | 7'024 | 1'852 | 279.3% |
| Total | 15'752 | 19'271 | -18.3% | 72'304 | 68'097 | 6.2% |
| Available Seat km (ASK, in mio) | | | | | | |
| Europe | 867 | 1'087 | -20.3% | 3'911 | 3'892 | 0.5% |
| Intercontinental | 2'010 | 2'075 | -3.1% | 8'066 | 2'075 | 288.8% |
| Total | 2'877 | 3'162 | -9.0% | 11'977 | 5'967 | 100.7% |
| Revenue Passenger km (RPK, in mio) | | | | | | |
| Europe | 501 | 627 | -20.1% | 2'011 | 2'031 | -1.0% |
| Intercontinental | 1'381 | 1'570 | -12.0% | 6'054 | 1'570 | 285.5% |
| Total | 1'882 | 2'197 | -14.3% | 8'065 | 3'601 | 124.0% |
| Seat Load Factor (SLF %) ²⁾ | | | | | | |
| Europe | 57.8% | 57.6% | 0.2% | 51.4% | 52.2% | -0.8% |
| Intercontinental | 68.7% | 75.7% | -7.0% | 75.1% | 75.7% | -0.6% |
| Total | 65.4% | 69.5% | -4.1% | 67.3% | 60.4% | 7.0% |

¹⁾ Revenue Passengers

²⁾ SLF = RPK / ASK

Traffic Statistics May 2003 LX Scheduled Services



| | May | | | Cumulative | | |
|---|---------|-----------|--------|------------|-----------|--------|
| | 2003 | 2002 | | 2003 | 2002 | |
| Number of Passengers ¹⁾ | | | | | | |
| Europe | 643'856 | 849'032 | -24.2% | 3'272'951 | 3'564'127 | -8.2% |
| Intercontinental | 211'550 | 242'124 | -12.6% | 1'109'352 | 479'294 | 131.5% |
| Total | 855'406 | 1'091'156 | -21.6% | 4'382'303 | 4'043'421 | 8.4% |
| Flights | | | | | | |
| Europe | 14'297 | 18'121 | -21.1% | 79'577 | 84'366 | -5.7% |
| Intercontinental | 1'715 | 1'918 | -10.6% | 8'739 | 3'770 | 131.8% |
| Total | 16'012 | 20'039 | -20.1% | 88'316 | 88'136 | 0.2% |
| Available Seat km (ASK, in mio) | | | | | | |
| Europe | 846 | 1'129 | -25.0% | 4'757 | 5'021 | -5.2% |
| Intercontinental | 1'936 | 2'165 | -10.6% | 10'002 | 4'240 | 135.9% |
| Total | 2'782 | 3'294 | -15.5% | 14'759 | 9'261 | 59.4% |
| Revenue Passenger km (RPK, in mio) | | | | | | |
| Europe | 499 | 656 | -23.9% | 2'510 | 2'686 | -6.6% |
| Intercontinental | 1'386 | 1'611 | -14.0% | 7'440 | 3'181 | 133.9% |
| Total | 1'885 | 2'266 | -16.8% | 9'950 | 5'867 | 69.6% |
| Seat Load Factor (SLF %) ²⁾ | | | | | | |
| Europe | 59.0% | 58.1% | 0.9% | 52.8% | 53.5% | -0.7% |
| Intercontinental | 71.6% | 74.4% | -2.8% | 74.4% | 75.0% | -0.7% |
| Total | 67.7% | 68.8% | -1.1% | 67.4% | 63.4% | 4.1% |

¹⁾ Revenue Passengers

²⁾ SLF = RPK / ASK

Traffic Statistics June 2003 LX Scheduled Services



| | June | | Cumulative | |
|---|-----------|------|------------|------|
| | 2003 | 2002 | 2003 | 2002 |
| Number of Passengers ¹⁾ | | | | |
| Europe | 871'989 | | 4'436'116 | |
| Intercontinental | 254'207 | | 733'501 | |
| Total | 1'126'196 | | 5'169'617 | |
| Flights | | | | |
| Europe | 17'799 | | 102'165 | |
| Intercontinental | 1'863 | | 5'633 | |
| Total | 19'662 | | 107'798 | |
| Available Seat km (ASK, in mio) | | | | |
| Europe | 1'099 | | 6'120 | |
| Intercontinental | 2'100 | | 6'339 | |
| Total | 3'199 | | 12'459 | |
| Revenue Passenger km (RPK, in mio) | | | | |
| Europe | 681 | | 3'367 | |
| Intercontinental | 1'692 | | 4'873 | |
| Total | 2'373 | | 8'240 | |
| Seat Load Factor (SLF %) ²⁾ | | | | |
| Europe | 62.0% | | 55.0% | |
| Intercontinental | 80.6% | | 76.9% | |
| Total | 74.2% | | 66.1% | |

¹⁾ Revenue Passengers

²⁾ SLF = RPK / ASK

Traffic Statistics July 2003 LX Scheduled Services



| | July | | Cumulative | |
|---|------------------|------|------------------|------|
| | 2003 | 2002 | 2003 | 2002 |
| Number of Passengers ¹⁾ | | | | |
| Europe | 886'661 | | 5'322'777 | |
| Intercontinental | 271'995 | | 1'005'496 | |
| Total | 1'158'656 | | 6'328'273 | |
| Flights | | | | |
| Europe | 18'448 | | 120'613 | |
| Intercontinental | 1'924 | | 7'557 | |
| Total | 20'372 | | 128'170 | |
| Available Seat km (ASK, in mio) | | | | |
| Europe | 1'117 | | 7'237 | |
| Intercontinental | 2'171 | | 8'510 | |
| Total | 3'287 | | 15'747 | |
| Revenue Passenger km (RPK, in mio) | | | | |
| Europe | 709 | | 4'076 | |
| Intercontinental | 1'793 | | 6'666 | |
| Total | 2'502 | | 10'742 | |
| Seat Load Factor (SLF %) ²⁾ | | | | |
| Europe | 63.5% | | 56.3% | |
| Intercontinental | 82.6% | | 78.3% | |
| Total | 76.1% | | 68.2% | |

¹⁾ Revenue Passengers

²⁾ SLF = RPK / ASK

Traffic Statistics August 2003 LX Scheduled Services



| | August | | Cumulative | |
|---|-----------|------|------------|------|
| | 2003 | 2002 | 2003 | 2002 |
| Number of Passengers ¹⁾ | | | | |
| Europe | 885'074 | | 6'207'851 | |
| Intercontinental | 287'683 | | 1'293'179 | |
| Total | 1'172'757 | | 7'501'030 | |
| Flights | | | | |
| Europe | 18'390 | | 139'003 | |
| Intercontinental | 1'930 | | 9'487 | |
| Total | 20'320 | | 148'490 | |
| Available Seat km (ASK, in mio) | | | | |
| Europe | 1'115 | | 8'352 | |
| Intercontinental | 2'168 | | 10'678 | |
| Total | 3'284 | | 19'030 | |
| Revenue Passenger km (RPK, in mio) | | | | |
| Europe | 711 | | 4'787 | |
| Intercontinental | 1'871 | | 8'537 | |
| Total | 2'581 | | 13'324 | |
| Seat Load Factor (SLF %) ²⁾ | | | | |
| Europe | 63.7% | | 57.3% | |
| Intercontinental | 86.3% | | 79.9% | |
| Total | 78.6% | | 70.0% | |

¹⁾ Revenue Passengers

²⁾ SLF = RPK / ASK

Traffic Statistics September 2003 LX Scheduled Services



| | September | | Cumulative | |
|---|-----------|------|------------|------|
| | 2003 | 2002 | 2003 | 2002 |
| Number of Passengers ¹⁾ | | | | |
| Europe | 886'302 | | 7'094'153 | |
| Intercontinental | 267'131 | | 1'560'310 | |
| Total | 1'153'433 | | 8'654'463 | |
| Flights | | | | |
| Europe | 17'959 | | 156'962 | |
| Intercontinental | 1'859 | | 11'346 | |
| Total | 19'818 | | 168'308 | |
| Available Seat km (ASK, in mio) | | | | |
| Europe | 1'080 | | 9'432 | |
| Intercontinental | 2'089 | | 12'767 | |
| Total | 3'169 | | 22'199 | |
| Revenue Passenger km (RPK, in mio) | | | | |
| Europe | 689 | | 5'476 | |
| Intercontinental | 1'760 | | 10'297 | |
| Total | 2'449 | | 15'773 | |
| Seat Load Factor (SLF %) ²⁾ | | | | |
| Europe | 63.8% | | 58.1% | |
| Intercontinental | 84.2% | | 80.6% | |
| Total | 77.3% | | 71.0% | |

¹⁾ Revenue Passengers

²⁾ SLF = RPK / ASK

Traffic Statistics October 2003 LX Scheduled Services



| | October | | Cumulative | |
|---|-----------|------|------------|------|
| | 2003 | 2002 | 2003 | 2002 |
| Number of Passengers ¹⁾ | | | | |
| Europe | 847'411 | | 7'941'564 | |
| Intercontinental | 269'482 | | 1'829'792 | |
| Total | 1'116'893 | | 9'771'356 | |
| Flights | | | | |
| Europe | 18'446 | | 175'408 | |
| Intercontinental | 1'924 | | 13'270 | |
| Total | 20'370 | | 188'678 | |
| Available Seat km (ASK, in mio) | | | | |
| Europe | 1'091 | | 10'523 | |
| Intercontinental | 2'124 | | 14'891 | |
| Total | 3'214 | | 25'414 | |
| Revenue Passenger km (RPK, in mio) | | | | |
| Europe | 647 | | 6'123 | |
| Intercontinental | 1'763 | | 12'060 | |
| Total | 2'411 | | 18'183 | |
| Seat Load Factor (SLF %) ²⁾ | | | | |
| Europe | 59.3% | | 58.2% | |
| Intercontinental | 83.0% | | 81.0% | |
| Total | 75.0% | | 71.5% | |

¹⁾ Revenue Passengers

²⁾ SLF = RPK / ASK

Traffic Statistics November 2003 LX Scheduled Services



| | November | | Cumulative | |
|---|----------------|------|-------------------|------|
| | 2003 | 2002 | 2003 | 2002 |
| Number of Passengers ¹⁾ | | | | |
| Europe | 671'034 | | 8'612'598 | |
| Intercontinental | 234'764 | | 2'064'556 | |
| Total | 905'798 | | 10'677'154 | |
| Flights | | | | |
| Europe | 17'443 | | 192'851 | |
| Intercontinental | 1'800 | | 15'070 | |
| Total | 19'243 | | 207'921 | |
| Available Seat km (ASK, in mio) | | | | |
| Europe | 1'025 | | 11'548 | |
| Intercontinental | 2'019 | | 16'910 | |
| Total | 3'044 | | 28'458 | |
| Revenue Passenger km (RPK, in mio) | | | | |
| Europe | 506 | | 6'629 | |
| Intercontinental | 1'579 | | 13'639 | |
| Total | 2'085 | | 20'268 | |
| Seat Load Factor (SLF %) ²⁾ | | | | |
| Europe | 49.4% | | 57.4% | |
| Intercontinental | 78.2% | | 80.7% | |
| Total | 68.5% | | 71.2% | |

¹⁾ Revenue Passengers

²⁾ SLF = RPK / ASK

Traffic Statistics December 2003 LX Scheduled Services



| | December | | Cumulative | |
|---|----------|------|------------|------|
| | 2003 | 2002 | 2003 | 2002 |
| Number of Passengers ¹⁾ | | | | |
| Europe | 655'714 | | 9'268'312 | |
| Intercontinental | 236'885 | | 2'301'441 | |
| Total | 892'599 | | 11'569'753 | |
| Flights | | | | |
| Europe | 16'866 | | 209'717 | |
| Intercontinental | 1'826 | | 16'896 | |
| Total | 18'692 | | 226'613 | |
| Available Seat km (ASK, in mio) | | | | |
| Europe | 1'009 | | 12'557 | |
| Intercontinental | 2'053 | | 18'963 | |
| Total | 3'061 | | 31'520 | |
| Revenue Passenger km (RPK, in mio) | | | | |
| Europe | 511 | | 7'141 | |
| Intercontinental | 1'591 | | 15'230 | |
| Total | 2'102 | | 22'371 | |
| Seat Load Factor (SLF %) ²⁾ | | | | |
| Europe | 50.7% | | 56.9% | |
| Intercontinental | 77.5% | | 80.3% | |
| Total | 68.7% | | 71.0% | |

¹⁾ Revenue Passengers

²⁾ SLF = RPK / ASK