

SWISS Traffic Figures

March 2004



Seat load factor makes strong gains

In March 2004 SWISS again improved its seat load factor sharply compared to the same month a year ago. The seat load factor for scheduled services reached 74.8%, a gain of 6.4 percentage points. This marked the sixth consecutive month in which SWISS recorded a higher level of capacity utilisation compared to the same month a year earlier. The positive trend of recent months continues and strengthened further compared to the first two months of the year. Production for March was lowered by 22.9% from the level for the same month a year prior. At the same time demand declined by 15.7%. This offsetting effect produced the increase in capacity utilisation. In Europe, the seat load factor of 60.3% was 6.3 percentage points higher on a year-ago comparison. The seat load factor on intercontinental routes in March 2004 climbed by 5.5 percentage points above the same month in 2003 to reach 81.1%. March also saw the reversal of the downward trend in seat load factor of the previous two months. SWISS carried 801,142 passengers in March. Given the significant decrease in production between the first quarter of this year and that of last year, which went hand in hand with adjustments to the route network, a comparison of passenger figures is impossible.

On **European routes** the seat load factor in March 2004 was 60.3% compared to 54.0% for March 2003. Available seat kilometres (ASK) were reduced by 30.2%, with a parallel decline of 22.0% in revenue seat kilometres (RPK).

On UK routes the seat load factor improved by 13.2 percentage points in March 2004 to 65.5%. Flights to Germany had a seat load factor of 60.4%, an improvement of 12.6 percentage points. Flights to Austria had a 58.6% seat load factor, which translates into a month-on-month improvement of 9.9 percentage points. Traffic to Italy, meanwhile, also improved, with seat load factor rising by 7.7 percentage points to 57.4%. The picture for France was stable, with a 0.3 percentage point improvement and a seat load factor of 50.5%. The better seat load factors in Europe are largely attributable to the re-sizing of the route network and the introduction of the Swiss in Europe concept. But the negative effect of the outbreak of war in Iraq on last year's March result must also be taken into consideration when analysing this year's gain (basis effect).

The SLF on **intercontinental routes** in March 2004 was 81.1%, or 5.5 percentage points above the level for the same month a year ago. Available seat kilometres were reduced by 19.2% over March 2003. The downturn in demand was limited to 13.4% for the same period.

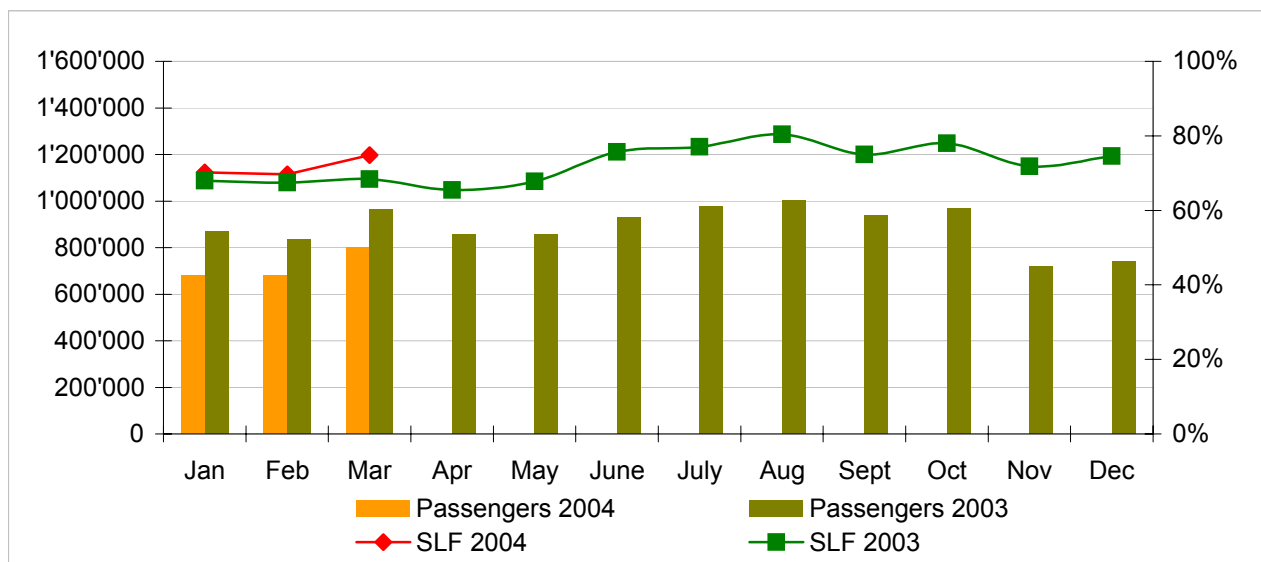
This marks the first time in the current year that capacity utilisation on the intercontinental network is significantly higher than for same period in the previous year, whereas seat load factor for both January and February was lower on a month-on-month comparison. Of particular significance was the improvement over the North Atlantic, SWISS's most important intercontinental route sector, where the negative trend of the previous months was reversed. The final month of the period under review produced an improvement of 7.2 percentage points, with seat load factor climbing to 85.3 per cent. Capacity utilisation for Asia was 2.7 percentage points better at 80.0%. For South America, seat load factor rose 2.2 percentage points to 88.1%. The figure for Africa declined marginally, by 0.2 percentage points, to 71.7%. Seat load factor for Middle East routes increased sharply in March, gaining 15.6 percentage points to reach 72.7%. It is important to keep the basis effect in mind when comparing this year's Middle East and North America figures with those from last year, a reflection of the impact of the war in Iraq.

Traffic Statistics January-December 2004 LX Scheduled Services



	Passengers Europe	Passengers Intercontinental	Passengers Total	SLF Europe	SLF Intercontinental	SLF Total
Jan	488'989	190'710	679'699	51.5%	77.8%	70.2%
Feb	504'960	173'962	678'922	54.6%	75.9%	69.6%
Mar	602'964	198'178	801'142	60.3%	81.1%	74.8%
Apr						
May						
Jun						
Jul						
Aug						
Sep						
Oct						
Nov						
Dec						

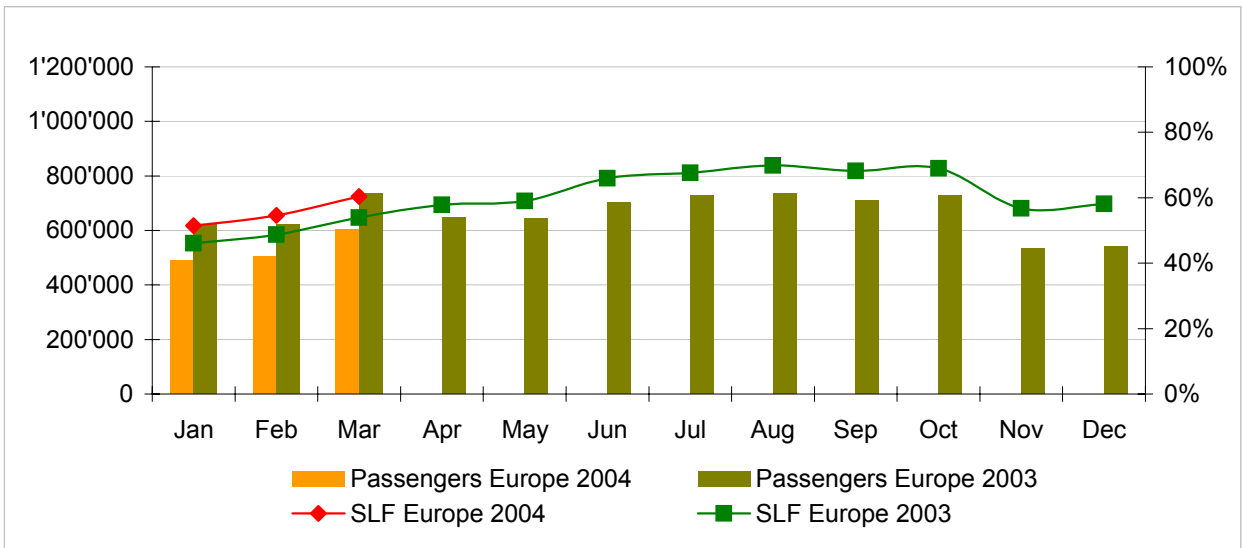
Comparison Passengers and Seat Load Factor (SLF %) versus prior year



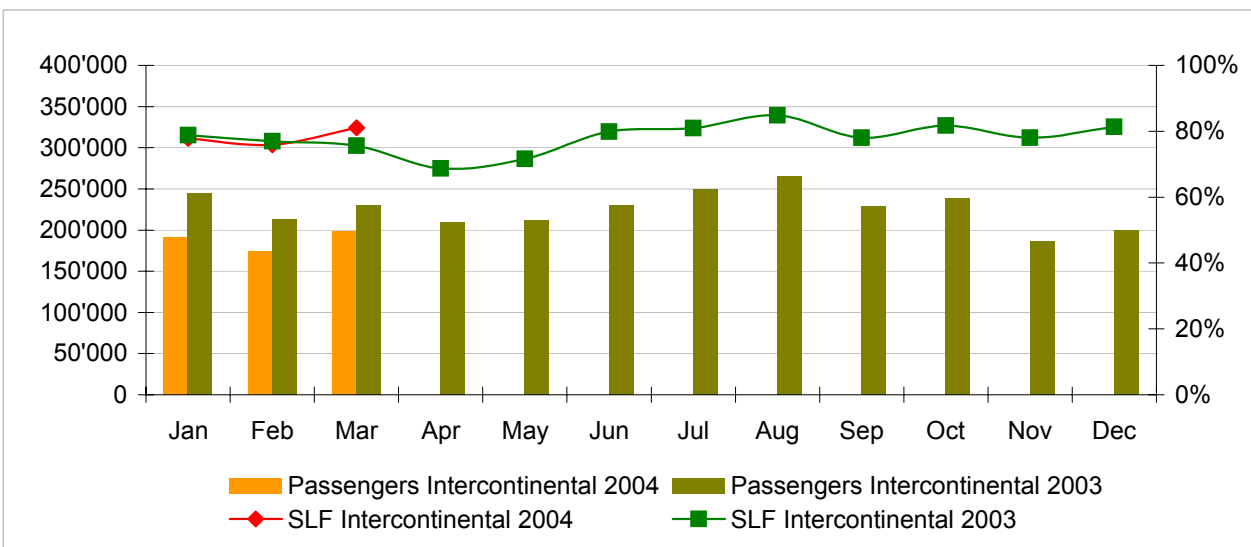
Next updates:

- April 04 figures May 10th, 2004
- May 04 figures June 10th, 2004
- June 04 figures July 12th, 2004

Passengers and Seat Load Factor (SLF %) European Routes
Comparison versus prior year



Passengers and Seat Load Factor (SLF %) Intercontinental Routes
Comparison versus prior year



Traffic Statistics January 2004 LX Scheduled Services



Swiss
International
Air Lines

	January			Cumulative		
	2004	2003		2004	2003	
Number of Passengers ¹⁾						
Europe	488'989	623'788	-21.6%	488'989	623'788	-21.6%
Intercontinental	190'710	245'067	-22.2%	190'710	245'067	-22.2%
Total	679'699	868'855	-21.8%	679'699	868'855	-21.8%
Flights						
Europe	10'640	17'314	-38.5%	10'640	17'314	-38.5%
Intercontinental	1'446	1'836	-21.2%	1'446	1'836	-21.2%
Total	12'086	19'150	-36.9%	12'086	19'150	-36.9%
Available Seat km (ASK, in mill)						
Europe	703	1'043	-32.6%	703	1'043	-32.6%
Intercontinental	1'724	2'094	-17.7%	1'724	2'094	-17.7%
Total	2'427	3'136	-22.6%	2'427	3'136	-22.6%
Revenue Passenger km (RPK, in mill)						
Europe	362	480	-24.6%	362	480	-24.6%
Intercontinental	1'341	1'651	-18.7%	1'341	1'651	-18.7%
Total	1'704	2'131	-20.1%	1'704	2'131	-20.1%
Seat Load Factor (SLF %) ²⁾						
Europe	51.5%	46.1%	5.4%	51.5%	46.1%	5.4%
Intercontinental	77.8%	78.9%	-1.0%	77.8%	78.9%	-1.0%
Total	70.2%	68.0%	2.2%	70.2%	68.0%	2.2%
Freight Load Factor (%) ³⁾						
Intercontinental	80.0%	77.9%	2.1%	80.0%	77.9%	2.1%
Freight Tonnes Kilometers (FTK, in 1000)						
Intercontinental	85'117	106'301	-19.9%	85'117	106'301	-19.9%

¹⁾ Revenue Passengers

²⁾ SLF = RPK / ASK
deviation in % pts

³⁾ Including mail
deviation in % pts

Traffic Statistics February 2004 LX Scheduled Services



Swiss
International
Air Lines

	February			Cumulative		
	2004	2003		2004	2003	
Number of Passengers ¹⁾						
Europe	504'960	622'717	-18.9%	993'949	1'246'505	-20.3%
Intercontinental	173'962	212'633	-18.2%	364'672	457'700	-20.3%
Total	678'922	835'350	-18.7%	1'358'621	1'704'205	-20.3%
Flights						
Europe	10'149	16'171	-37.2%	20'789	33'485	-37.9%
Intercontinental	1'352	1'642	-17.7%	2'798	3'478	-19.6%
Total	11'501	17'813	-35.4%	23'587	36'963	-36.2%
Available Seat km (ASK, in mill)						
Europe	669	957	-30.1%	1'372	2'000	-31.4%
Intercontinental	1'603	1'875	-14.5%	3'327	3'968	-16.2%
Total	2'272	2'832	-19.8%	4'699	5'968	-21.3%
Revenue Passenger km (RPK, in mill)						
Europe	365	466	-21.7%	727	947	-23.2%
Intercontinental	1'217	1'443	-15.7%	2'558	3'094	-17.3%
Total	1'582	1'910	-17.2%	3'285	4'041	-18.7%
Seat Load Factor (SLF %) ²⁾						
Europe	54.6%	48.7%	5.9%	53.0%	47.3%	5.7%
Intercontinental	75.9%	77.0%	-1.1%	76.9%	78.0%	-1.1%
Total	69.6%	67.4%	2.2%	69.9%	67.7%	2.2%
Freight Load Factor (%) ³⁾						
Intercontinental	90.0%	86.0%	4.0%	85.0%	82.0%	3.0%
Freight Tonnes Kilometers (FTK, in 1000)						
Intercontinental	97'771	108'934	-10.2%	182'888	215'235	-15.0%

¹⁾ Revenue Passengers

²⁾ SLF = RPK / ASK
deviation in % pts

³⁾ Including mail
deviation in % pts

Traffic Statistics March 2004 LX Scheduled Services



Swiss
International
Air Lines

	March			Cumulative		
	2004	2003		2004	2003	
Number of Passengers ¹⁾						
Europe	602'964	735'116	-18.0%	1'596'913	1'981'621	-19.4%
Intercontinental	198'178	230'492	-14.0%	562'850	688'192	-18.2%
Total	801'142	965'608	-17.0%	2'159'763	2'669'813	-19.1%
Flights						
Europe	10'988	17'770	-38.2%	31'777	51'255	-38.0%
Intercontinental	1'419	1'819	-22.0%	4'217	5'297	-20.4%
Total	12'407	19'589	-36.7%	35'994	56'552	-36.4%
Available Seat km (ASK, in mill)						
Europe	729	1'044	-30.2%	2'101	3'044	-31.0%
Intercontinental	1'686	2'087	-19.2%	5'012	6'056	-17.2%
Total	2'414	3'132	-22.9%	7'113	9'100	-21.8%
Revenue Passenger km (RPK, in mill)						
Europe	440	563	-22.0%	1'167	1'510	-22.7%
Intercontinental	1'367	1'578	-13.4%	3'925	4'672	-16.0%
Total	1'806	2'141	-15.7%	5'092	6'182	-17.6%
Seat Load Factor (SLF %) ²⁾						
Europe	60.3%	54.0%	6.3%	55.5%	49.6%	5.9%
Intercontinental	81.1%	75.6%	5.5%	78.3%	77.2%	1.1%
Total	74.8%	68.4%	6.4%	71.6%	67.9%	3.7%
Estimate Freight Load Factor (%) ³⁾						
Intercontinental	91.0%	87.4%	3.6%	87.0%	83.8%	3.2%
Estimate Freight Tonnes Kilometers (FTK, in 1000)						
Intercontinental	102'640	120'393	-14.7%	285'528	335'628	-14.9%

¹⁾ Revenue Passengers

²⁾ SLF = RPK / ASK
deviation in % pts

³⁾ Including mail
deviation in % pts

Traffic Statistics April 2004 LX Scheduled Services



Swiss
International
Air Lines

	April		Cumulative	
	2004	2003	2004	2003
Number of Passengers ¹⁾				
Europe	647'474		2'629'095	
Intercontinental	209'610		897'802	
Total	857'084		3'526'897	
Flights				
Europe	14'025		65'280	
Intercontinental	1'727		7'024	
Total	15'752		72'304	
Available Seat km (ASK, in mill)				
Europe	867		3'911	
Intercontinental	2'010		8'066	
Total	2'877		11'977	
Revenue Passenger km (RPK, in mill)				
Europe	501		2'011	
Intercontinental	1'381		6'054	
Total	1'882		8'065	
Seat Load Factor (SLF %) ²⁾				
Europe	57.8%		51.4%	
Intercontinental	68.7%		75.1%	
Total	65.4%		67.3%	
Freight Load Factor (%) ³⁾				
Intercontinental	82.6%		83.5%	
Freight Tonnes Kilometers (FTK, in 1000)				
Intercontinental	116'773		452'401	

¹⁾ Revenue Passengers

²⁾ SLF = RPK / ASK
deviation in % pts

³⁾ Including mail
deviation in % pts

Traffic Statistics May 2004 LX Scheduled Services



	May		Cumulative	
	2004	2003	2004	2003
Number of Passengers ¹⁾				
Europe	643'856		3'272'951	
Intercontinental	211'550		1'109'352	
Total	855'406		4'382'303	
Flights				
Europe	14'297		79'577	
Intercontinental	1'715		8'739	
Total	16'012		88'316	
Available Seat km (ASK, in mill)				
Europe	846		4'757	
Intercontinental	1'936		10'002	
Total	2'782		14'759	
Revenue Passenger km (RPK, in mill)				
Europe	499		2'510	
Intercontinental	1'386		7'440	
Total	1'885		9'950	
Seat Load Factor (SLF %) ²⁾				
Europe	59.0%		52.8%	
Intercontinental	71.6%		74.4%	
Total	67.7%		67.4%	
Freight Load Factor (%) ³⁾				
Intercontinental	85.5%		83.9%	
Freight Tonnes Kilometers (FTK, in 1000)				
Intercontinental	110'594		562'995	

¹⁾ Revenue Passengers

²⁾ SLF = RPK / ASK
deviation in % pts

³⁾ Including mail
deviation in % pts

Traffic Statistics June 2004 LX Scheduled Services



	June		Cumulative	
	2004	2003	2004	2003
Number of Passengers ¹⁾				
Europe	700'468		3'973'419	
Intercontinental	230'101		1'339'453	
Total	930'569		5'312'872	
Flights				
Europe	13'978		93'555	
Intercontinental	1'686		10'425	
Total	15'664		103'980	
Available Seat km (ASK, in mill)				
Europe	828		5'585	
Intercontinental	1'892		11'894	
Total	2'719		17'479	
Revenue Passenger km (RPK, in mill)				
Europe	546		3'056	
Intercontinental	1'511		8'951	
Total	2'057		12'007	
Seat Load Factor (SLF %) ²⁾				
Europe	66.0%		54.7%	
Intercontinental	79.9%		75.3%	
Total	75.7%		68.7%	
Freight Load Factor (%) ³⁾				
Intercontinental	84.5%		84.0%	
Freight Tonnes Kilometers (FTK, in 1000)				
Intercontinental	106'280		669'275	

¹⁾ Revenue Passengers

²⁾ SLF = RPK / ASK
deviation in % pts

³⁾ Including mail
deviation in % pts

Traffic Statistics July 2004 LX Scheduled Services



Swiss
International
Air Lines

	July		Cumulative	
	2004	2003	2004	2003
Number of Passengers ¹⁾				
Europe	727'706		4'701'125	
Intercontinental	249'520		1'588'973	
Total	977'226		6'290'098	
Flights				
Europe	14'286		107'841	
Intercontinental	1'771		12'196	
Total	16'057		120'037	
Available Seat km (ASK, in mill)				
Europe	850		6'435	
Intercontinental	2'015		13'909	
Total	2'865		20'343	
Revenue Passenger km (RPK, in mill)				
Europe	575		3'631	
Intercontinental	1'633		10'584	
Total	2'207		14'215	
Seat Load Factor (SLF %) ²⁾				
Europe	67.6%		56.4%	
Intercontinental	81.0%		76.1%	
Total	77.1%		69.9%	
Freight Load Factor (%) ³⁾				
Intercontinental	83.7%		83.9%	
Freight Tonnes Kilometers (FTK, in 1000)				
Intercontinental	99'370		768'645	

¹⁾ Revenue Passengers

²⁾ SLF = RPK / ASK
deviation in % pts

³⁾ Including mail
deviation in % pts

Traffic Statistics August 2004 LX Scheduled Services



	August		Cumulative	
	2004	2003	2004	2003
Number of Passengers ¹⁾				
Europe	736'117		5'437'242	
Intercontinental	265'112		1'854'085	
Total	1'001'229		7'291'327	
Flights				
Europe	13'864		121'705	
Intercontinental	1'803		13'999	
Total	15'667		135'704	
Available Seat km (ASK, in mill)				
Europe	847		7'282	
Intercontinental	2'034		15'943	
Total	2'881		23'224	
Revenue Passenger km (RPK, in mill)				
Europe	592		4'223	
Intercontinental	1'725		12'309	
Total	2'317		16'531	
Seat Load Factor (SLF %) ²⁾				
Europe	69.9%		58.0%	
Intercontinental	84.8%		77.2%	
Total	80.4%		71.2%	
Freight Load Factor (%) ³⁾				
Intercontinental	79.7%		83.4%	
Freight Tonnes Kilometers (FTK, in 1000)				
Intercontinental	97'449		866'094	

¹⁾ Revenue Passengers

²⁾ SLF = RPK / ASK
deviation in % pts

³⁾ Including mail
deviation in % pts

Traffic Statistics September 2004 LX Scheduled Services



	September		Cumulative	
	2004	2003	2004	2003
Number of Passengers ¹⁾				
Europe	711'750		6'148'992	
Intercontinental	228'879		2'082'964	
Total	940'629		8'231'956	
Flights				
Europe	13'288		134'993	
Intercontinental	1'676		15'675	
Total	14'964		150'668	
Available Seat km (ASK, in mill)				
Europe	811		8'092	
Intercontinental	1'878		17'821	
Total	2'689		25'913	
Revenue Passenger km (RPK, in mill)				
Europe	553		4'776	
Intercontinental	1'465		13'774	
Total	2'018		18'549	
Seat Load Factor (SLF %) ²⁾				
Europe	68.2%		59.0%	
Intercontinental	78.0%		77.3%	
Total	75.0%		71.6%	
Freight Load Factor (%) ³⁾				
Intercontinental	85.2%		83.6%	
Freight Tonnes Kilometers (FTK, in 1000)				
Intercontinental	111'664		977'758	

¹⁾ Revenue Passengers

²⁾ SLF = RPK / ASK
deviation in % pts

³⁾ Including mail
deviation in % pts

Traffic Statistics October 2004 LX Scheduled Services



	October		Cumulative	
	2004	2003	2004	2003
Number of Passengers ¹⁾				
Europe	727'741		6'876'733	
Intercontinental	238'261		2'321'225	
Total	966'002		9'197'958	
Flights				
Europe	12'801		147'794	
Intercontinental	1'707		17'382	
Total	14'508		165'176	
Available Seat km (ASK, in mill)				
Europe	807		8'899	
Intercontinental	1'960		19'781	
Total	2'767		28'680	
Revenue Passenger km (RPK, in mill)				
Europe	557		5'333	
Intercontinental	1'601		15'375	
Total	2'159		20'708	
Seat Load Factor (SLF %) ²⁾				
Europe	69.0%		59.9%	
Intercontinental	81.7%		77.7%	
Total	78.0%		72.2%	
Freight Load Factor (%) ³⁾				
Intercontinental	85.5%		83.8%	
Freight Tonnes Kilometers (FTK, in 1000)				
Intercontinental	104'207		1'081'965	

¹⁾ Revenue Passengers

²⁾ SLF = RPK / ASK
deviation in % pts

³⁾ Including mail
deviation in % pts

Traffic Statistics November 2004 LX Scheduled Services



	November		Cumulative	
	2004	2003	2004	2003
Number of Passengers ¹⁾				
Europe	533'209		7'409'942	
Intercontinental	186'914		2'508'139	
Total	720'123		9'918'081	
Flights				
Europe	10'510		158'304	
Intercontinental	1'417		18'799	
Total	11'927		177'103	
Available Seat km (ASK, in mill)				
Europe	691		9'590	
Intercontinental	1'691		21'471	
Total	2'382		31'062	
Revenue Passenger km (RPK, in mill)				
Europe	392		5'725	
Intercontinental	1'319		16'694	
Total	1'711		22'419	
Seat Load Factor (SLF %) ²⁾				
Europe	56.8%		59.7%	
Intercontinental	78.0%		77.8%	
Total	71.8%		72.2%	
Freight Load Factor (%) ³⁾				
Intercontinental	87.7%		84.2%	
Freight Tonnes Kilometers (FTK, in 1000)				
Intercontinental	98'420		1'180'385	

¹⁾ Revenue Passengers

²⁾ SLF = RPK / ASK
deviation in % pts

³⁾ Including mail
deviation in % pts

Traffic Statistics December 2004 LX Scheduled Services



	December		Cumulative	
	2004	2003	2004	2003
Number of Passengers ¹⁾				
Europe	542'537		7'952'479	
Intercontinental	200'097		2'708'236	
Total	742'634		10'660'715	
Flights				
Europe	10'535		168'839	
Intercontinental	1'448		20'247	
Total	11'983		189'086	
Available Seat km (ASK, in mill)				
Europe	695		10'285	
Intercontinental	1'722		23'193	
Total	2'417		33'478	
Revenue Passenger km (RPK, in mill)				
Europe	403		6'128	
Intercontinental	1'401		18'095	
Total	1'804		24'223	
Seat Load Factor (SLF %) ²⁾				
Europe	58.1%		59.6%	
Intercontinental	81.3%		78.0%	
Total	74.6%		72.4%	
Freight Load Factor (%) ³⁾				
Intercontinental	86.7%		84.4%	
Freight Tonnes Kilometers (FTK, in 1000)				
Intercontinental	94'363		1'274'748	

¹⁾ Revenue Passengers

²⁾ SLF = RPK / ASK
deviation in % pts

³⁾ Including mail
deviation in % pts