

# SWISS Traffic Figures

April 2004



## SWISS reports sizeable improvement in load factors

SWISS's load factor for April was an 11.8-percentage-point improvement on the same period last year. Seat load factor for scheduled services amounted to 77.2%, further accentuating the positive trends of the past six months. SWISS's total production for April 2004 was 21.2% less than for the same month last year. But the corresponding year-on-year decline in demand was stemmed to 7.1%. Load factors increased accordingly. Load factor for the European network amounted to 66.8%, 9.0 percentage points above April 2003. Load factors for intercontinental services saw a 13.2-point increase to 81.9%. SWISS's seat-load-factor results for April 2004 were thus a broad improvement on the prior-year period. The company carried a total of 819 752 passengers on its scheduled air services. Year-on-year comparisons of actual passenger numbers are not meaningful, however, in view of the sizeable capacity reductions which resulted from modifications to the SWISS route network in the intervening months.

Seat load factor for the **European network** stood at 66.8% for April 2004, compared to 57.8% a year ago. Capacity in available seat-kilometres (ASK) was 18.7% down on its prior-year level. But the associated volume decline in revenue-passenger-kilometre (RPK) terms was limited to 6.0%. While capacity for March 2004 was over 30% below its prior-year level, the 18.7% year-on-year reduction for April is more modest only at first sight: SWISS had already substantially reduced its European production in April 2003 (by 20.3% compared to April 2002), and the basis of comparison for April 2004 is thus different from that of March 2004.

April 2004 seat load factor on UK routes rose 15.9 percentage points to 70.6%. Flights to Germany also saw a 10.4-point improvement to 59.9%. Services to Austria registered a seat load factor of 61.5%, a 7.5-point increase on April 2003. Flights to Italy posted a seat load factor of 65.2%, an 11.8-point improvement on the same period last year. Seat load factors on services to France remained at prior-year levels: the 59.7% recorded was a slight 0.1-point decline. The network modifications and the "SWISS in Europe" concept are clearly having a positive impact on the utilisation of the company's flights. But part of the increases seen this April must also be attributed to last year's war in Iraq and its adverse effect on travel demand in the comparable prior-year period.

Seat load factor on SWISS's **intercontinental routes** amounted to 81.9% in April 2004, a 13.2-percentage-point improvement on the previous year. Intercontinental ASK capacity for the month was 22.3% lower; but the RPK decline was kept to 7.5% over the same period.

Intercontinental seat load factor thus exceeded the prior-year result for the second month in succession – this time by an emphatic 13.2 percentage points. Here too, however, a comparison with prior-year levels should also bear in mind the fact that demand in April 2003 was being depressed by a number of adverse factors. While March traffic had primarily felt the impact of the hostilities in Iraq, April volumes were diminished by the increasingly negative effects of the SARS epidemic. Services to and from the Far East were hit particularly hard, suffering a dramatic decline in travel volumes.

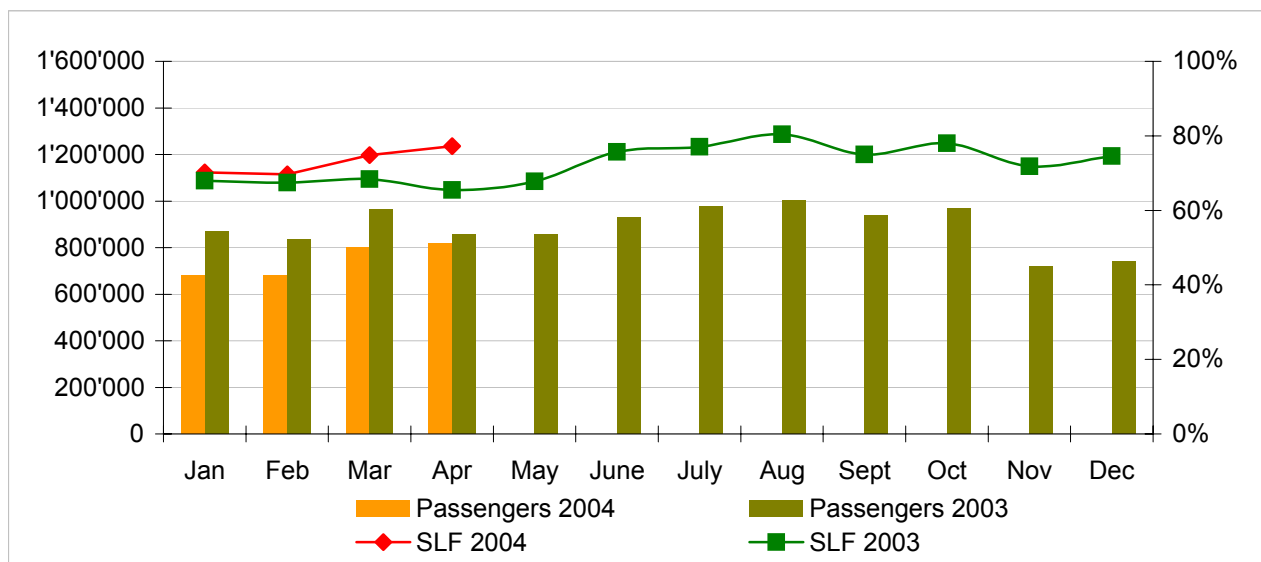
Not surprisingly, then, Far East services reported the strongest year-on-year growth for April 2004, with seat load factor increasing by 23.0 percentage points. The other intercontinental regions also posted positive load-factor growth: 12.0 points for the North Atlantic, 11.4 points for the Middle East, 4.4 points for the South Atlantic and 2.1 points for Africa. SWISS also posted encouraging April seat load factors for its intercontinental services in absolute terms.

## Traffic Statistics January-December 2004 LX Scheduled Services



	Passengers Europe	Passengers Intercontinental	Passengers Total	SLF Europe	SLF Intercontinental	SLF Total
Jan	488'989	190'710	679'699	51.5%	77.8%	70.2%
Feb	504'960	173'962	678'922	54.6%	75.9%	69.6%
Mar	602'964	198'178	801'142	60.3%	81.1%	74.8%
Apr	629'871	189'881	819'752	66.8%	81.9%	77.2%
May						
Jun						
Jul						
Aug						
Sep						
Oct						
Nov						
Dec						

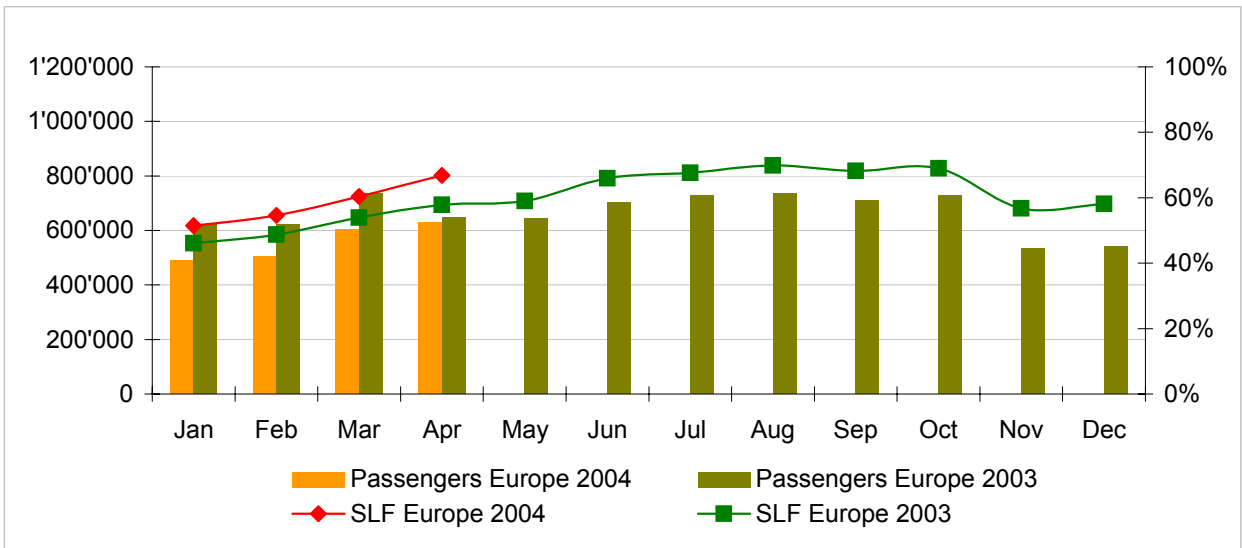
### Comparison Passengers and Seat Load Factor (SLF %) versus prior year



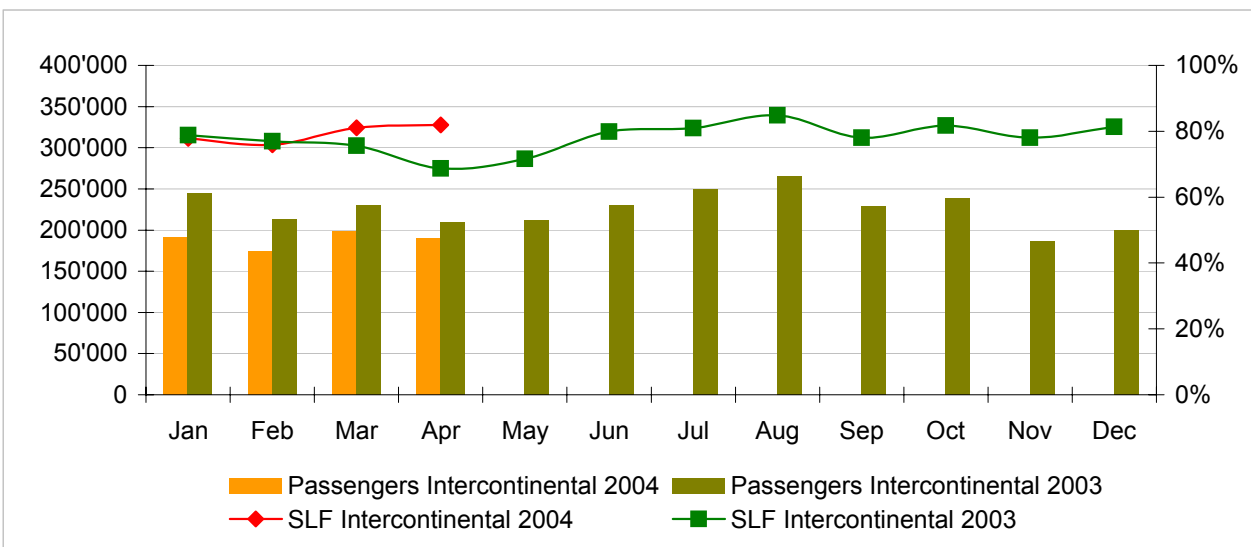
#### Next updates:

- May 04 figures                      June 10th, 2004
- June 04 figures                      July 12th, 2004
- July 04 figures                        August 10th, 2004

**Passengers and Seat Load Factor (SLF %) European Routes**  
 Comparison versus prior year



**Passengers and Seat Load Factor (SLF %) Intercontinental Routes**  
 Comparison versus prior year



## Traffic Statistics January 2004 LX Scheduled Services



Swiss  
International  
Air Lines

	January			Cumulative		
	2004	2003		2004	2003	
<b>Number of Passengers <sup>1)</sup></b>						
Europe	488'989	623'788	-21.6%	488'989	623'788	-21.6%
Intercontinental	190'710	245'067	-22.2%	190'710	245'067	-22.2%
Total	679'699	868'855	-21.8%	679'699	868'855	-21.8%
<b>Flights</b>						
Europe	10'640	17'314	-38.5%	10'640	17'314	-38.5%
Intercontinental	1'446	1'836	-21.2%	1'446	1'836	-21.2%
Total	12'086	19'150	-36.9%	12'086	19'150	-36.9%
<b>Available Seat km (ASK, in mill)</b>						
Europe	703	1'043	-32.6%	703	1'043	-32.6%
Intercontinental	1'724	2'094	-17.7%	1'724	2'094	-17.7%
Total	2'427	3'136	-22.6%	2'427	3'136	-22.6%
<b>Revenue Passenger km (RPK, in mill)</b>						
Europe	362	480	-24.6%	362	480	-24.6%
Intercontinental	1'341	1'651	-18.7%	1'341	1'651	-18.7%
Total	1'704	2'131	-20.1%	1'704	2'131	-20.1%
<b>Seat Load Factor (SLF %) <sup>2)</sup></b>						
Europe	51.5%	46.1%	5.4%	51.5%	46.1%	5.4%
Intercontinental	77.8%	78.9%	-1.0%	77.8%	78.9%	-1.0%
Total	70.2%	68.0%	2.2%	70.2%	68.0%	2.2%
<b>Freight Load Factor (%) <sup>3)</sup></b>						
Intercontinental	80.0%	77.9%	2.1%	80.0%	77.9%	2.1%
<b>Freight Tonnes Kilometers (FTK, in 1000)</b>						
Intercontinental	85'117	106'301	-19.9%	85'117	106'301	-19.9%

<sup>1)</sup> Revenue Passengers

<sup>2)</sup> SLF = RPK / ASK  
deviation in % pts

<sup>3)</sup> Including mail  
deviation in % pts

## Traffic Statistics February 2004 LX Scheduled Services



Swiss  
International  
Air Lines

	February			Cumulative		
	2004	2003		2004	2003	
<b>Number of Passengers <sup>1)</sup></b>						
Europe	504'960	622'717	-18.9%	993'949	1'246'505	-20.3%
Intercontinental	173'962	212'633	-18.2%	364'672	457'700	-20.3%
Total	678'922	835'350	-18.7%	1'358'621	1'704'205	-20.3%
<b>Flights</b>						
Europe	10'149	16'171	-37.2%	20'789	33'485	-37.9%
Intercontinental	1'352	1'642	-17.7%	2'798	3'478	-19.6%
Total	11'501	17'813	-35.4%	23'587	36'963	-36.2%
<b>Available Seat km (ASK, in mill)</b>						
Europe	669	957	-30.1%	1'372	2'000	-31.4%
Intercontinental	1'603	1'875	-14.5%	3'327	3'968	-16.2%
Total	2'272	2'832	-19.8%	4'699	5'968	-21.3%
<b>Revenue Passenger km (RPK, in mill)</b>						
Europe	365	466	-21.7%	727	947	-23.2%
Intercontinental	1'217	1'443	-15.7%	2'558	3'094	-17.3%
Total	1'582	1'910	-17.2%	3'285	4'041	-18.7%
<b>Seat Load Factor (SLF %) <sup>2)</sup></b>						
Europe	54.6%	48.7%	5.9%	53.0%	47.3%	5.7%
Intercontinental	75.9%	77.0%	-1.1%	76.9%	78.0%	-1.1%
Total	69.6%	67.4%	2.2%	69.9%	67.7%	2.2%
<b>Freight Load Factor (%) <sup>3)</sup></b>						
Intercontinental	90.0%	86.0%	4.0%	85.0%	82.0%	3.0%
<b>Freight Tonnes Kilometers (FTK, in 1000)</b>						
Intercontinental	97'771	108'934	-10.2%	182'888	215'235	-15.0%

<sup>1)</sup> Revenue Passengers

<sup>2)</sup> SLF = RPK / ASK  
deviation in % pts

<sup>3)</sup> Including mail  
deviation in % pts

## Traffic Statistics March 2004 LX Scheduled Services



Swiss  
International  
Air Lines

	March			Cumulative		
	2004	2003		2004	2003	
<b>Number of Passengers <sup>1)</sup></b>						
Europe	602'964	735'116	-18.0%	1'596'913	1'981'621	-19.4%
Intercontinental	198'178	230'492	-14.0%	562'850	688'192	-18.2%
Total	801'142	965'608	-17.0%	2'159'763	2'669'813	-19.1%
<b>Flights</b>						
Europe	10'988	17'770	-38.2%	31'777	51'255	-38.0%
Intercontinental	1'419	1'819	-22.0%	4'217	5'297	-20.4%
Total	12'407	19'589	-36.7%	35'994	56'552	-36.4%
<b>Available Seat km (ASK, in mill)</b>						
Europe	729	1'044	-30.2%	2'101	3'044	-31.0%
Intercontinental	1'686	2'087	-19.2%	5'012	6'056	-17.2%
Total	2'414	3'132	-22.9%	7'113	9'100	-21.8%
<b>Revenue Passenger km (RPK, in mill)</b>						
Europe	440	563	-22.0%	1'167	1'510	-22.7%
Intercontinental	1'367	1'578	-13.4%	3'925	4'672	-16.0%
Total	1'806	2'141	-15.7%	5'092	6'182	-17.6%
<b>Seat Load Factor (SLF %) <sup>2)</sup></b>						
Europe	60.3%	54.0%	6.3%	55.5%	49.6%	5.9%
Intercontinental	81.1%	75.6%	5.5%	78.3%	77.2%	1.1%
Total	74.8%	68.4%	6.4%	71.6%	67.9%	3.7%
<b>Freight Load Factor (%) <sup>3)</sup></b>						
Intercontinental	91.0%	87.4%	3.6%	87.0%	83.8%	3.2%
<b>Freight Tonnes Kilometers (FTK, in 1000)</b>						
Intercontinental	104'478	120'393	-13.2%	287'366	335'628	-14.4%

<sup>1)</sup> Revenue Passengers

<sup>2)</sup> SLF = RPK / ASK  
deviation in % pts

<sup>3)</sup> Including mail  
deviation in % pts

## Traffic Statistics April 2004 LX Scheduled Services



Swiss  
International  
Air Lines

	April			Cumulative		
	2004	2003		2004	2003	
<b>Number of Passengers <sup>1)</sup></b>						
Europe	629'871	647'474	-2.7%	2'226'784	2'629'095	-15.3%
Intercontinental	189'881	209'610	-9.4%	752'731	897'802	-16.2%
Total	819'752	857'084	-4.4%	2'979'515	3'526'897	-15.5%
<b>Flights</b>						
Europe	10'622	14'025	-24.3%	42'399	65'280	-35.1%
Intercontinental	1'299	1'727	-24.8%	5'516	7'024	-21.5%
Total	11'921	15'752	-24.3%	47'915	72'304	-33.7%
<b>Available Seat km (ASK, in mill)</b>						
Europe	705	867	-18.7%	2'806	3'911	-28.3%
Intercontinental	1'561	2'010	-22.3%	6'573	8'066	-18.5%
Total	2'266	2'877	-21.2%	9'379	11'977	-21.7%
<b>Revenue Passenger km (RPK, in mill)</b>						
Europe	471	501	-6.0%	1'638	2'011	-18.5%
Intercontinental	1'278	1'381	-7.5%	5'203	6'054	-14.1%
Total	1'749	1'882	-7.1%	6'841	8'065	-15.2%
<b>Seat Load Factor (SLF %) <sup>2)</sup></b>						
Europe	66.8%	57.8%	9.0%	58.4%	51.4%	7.0%
Intercontinental	81.9%	68.7%	13.2%	79.2%	75.1%	4.1%
Total	77.2%	65.4%	11.8%	72.9%	67.3%	5.6%
<b>Estimate Freight Load Factor (%) <sup>3)</sup></b>						
Intercontinental	82.0%	82.6%	-0.6%	85.8%	83.5%	2.3%
<b>Estimate Freight Tonnes Kilometers (FTK, in 1000)</b>						
Intercontinental	87'500	116'773	-25.1%	374'866	452'401	-17.1%

<sup>1)</sup> Revenue Passengers

<sup>2)</sup> SLF = RPK / ASK  
deviation in % pts

<sup>3)</sup> Including mail  
deviation in % pts

## Traffic Statistics May 2004 LX Scheduled Services



	May		Cumulative	
	2004	2003	2004	2003
<b>Number of Passengers <sup>1)</sup></b>				
Europe	643'856		3'272'951	
Intercontinental	211'550		1'109'352	
Total	855'406		4'382'303	
<b>Flights</b>				
Europe	14'297		79'577	
Intercontinental	1'715		8'739	
Total	16'012		88'316	
<b>Available Seat km (ASK, in mill)</b>				
Europe	846		4'757	
Intercontinental	1'936		10'002	
Total	2'782		14'759	
<b>Revenue Passenger km (RPK, in mill)</b>				
Europe	499		2'510	
Intercontinental	1'386		7'440	
Total	1'885		9'950	
<b>Seat Load Factor (SLF %) <sup>2)</sup></b>				
Europe	59.0%		52.8%	
Intercontinental	71.6%		74.4%	
Total	67.7%		67.4%	
<b>Freight Load Factor (%) <sup>3)</sup></b>				
Intercontinental	85.5%		83.9%	
<b>Freight Tonnes Kilometers (FTK, in 1000)</b>				
Intercontinental	110'594		562'995	

<sup>1)</sup> Revenue Passengers

<sup>2)</sup> SLF = RPK / ASK  
deviation in % pts

<sup>3)</sup> Including mail  
deviation in % pts

## Traffic Statistics June 2004 LX Scheduled Services



	June		Cumulative	
	2004	2003	2004	2003
<b>Number of Passengers <sup>1)</sup></b>				
Europe	700'468		3'973'419	
Intercontinental	230'101		1'339'453	
<b>Total</b>	<b>930'569</b>		<b>5'312'872</b>	
<b>Flights</b>				
Europe	13'978		93'555	
Intercontinental	1'686		10'425	
<b>Total</b>	<b>15'664</b>		<b>103'980</b>	
<b>Available Seat km (ASK, in mill)</b>				
Europe	828		5'585	
Intercontinental	1'892		11'894	
<b>Total</b>	<b>2'719</b>		<b>17'479</b>	
<b>Revenue Passenger km (RPK, in mill)</b>				
Europe	546		3'056	
Intercontinental	1'511		8'951	
<b>Total</b>	<b>2'057</b>		<b>12'007</b>	
<b>Seat Load Factor (SLF %) <sup>2)</sup></b>				
Europe	66.0%		54.7%	
Intercontinental	79.9%		75.3%	
<b>Total</b>	<b>75.7%</b>		<b>68.7%</b>	
<b>Freight Load Factor (%) <sup>3)</sup></b>				
Intercontinental	84.5%		84.0%	
<b>Freight Tonnes Kilometers (FTK, in 1000)</b>				
Intercontinental	106'280		669'275	

<sup>1)</sup> Revenue Passengers

<sup>2)</sup> SLF = RPK / ASK  
deviation in % pts

<sup>3)</sup> Including mail  
deviation in % pts

## Traffic Statistics July 2004 LX Scheduled Services



	July		Cumulative	
	2004	2003	2004	2003
<b>Number of Passengers <sup>1)</sup></b>				
Europe	727'706		4'701'125	
Intercontinental	249'520		1'588'973	
Total	977'226		6'290'098	
<b>Flights</b>				
Europe	14'286		107'841	
Intercontinental	1'771		12'196	
Total	16'057		120'037	
<b>Available Seat km (ASK, in mill)</b>				
Europe	850		6'435	
Intercontinental	2'015		13'909	
Total	2'865		20'343	
<b>Revenue Passenger km (RPK, in mill)</b>				
Europe	575		3'631	
Intercontinental	1'633		10'584	
Total	2'207		14'215	
<b>Seat Load Factor (SLF %) <sup>2)</sup></b>				
Europe	67.6%		56.4%	
Intercontinental	81.0%		76.1%	
Total	77.1%		69.9%	
<b>Freight Load Factor (%) <sup>3)</sup></b>				
Intercontinental	83.7%		83.9%	
<b>Freight Tonnes Kilometers (FTK, in 1000)</b>				
Intercontinental	99'370		768'645	

<sup>1)</sup> Revenue Passengers

<sup>2)</sup> SLF = RPK / ASK  
deviation in % pts

<sup>3)</sup> Including mail  
deviation in % pts

## Traffic Statistics August 2004 LX Scheduled Services



	August		Cumulative	
	2004	2003	2004	2003
<b>Number of Passengers <sup>1)</sup></b>				
Europe	736'117		5'437'242	
Intercontinental	265'112		1'854'085	
Total	1'001'229		7'291'327	
<b>Flights</b>				
Europe	13'864		121'705	
Intercontinental	1'803		13'999	
Total	15'667		135'704	
<b>Available Seat km (ASK, in mill)</b>				
Europe	847		7'282	
Intercontinental	2'034		15'943	
Total	2'881		23'224	
<b>Revenue Passenger km (RPK, in mill)</b>				
Europe	592		4'223	
Intercontinental	1'725		12'309	
Total	2'317		16'531	
<b>Seat Load Factor (SLF %) <sup>2)</sup></b>				
Europe	69.9%		58.0%	
Intercontinental	84.8%		77.2%	
Total	80.4%		71.2%	
<b>Freight Load Factor (%) <sup>3)</sup></b>				
Intercontinental	79.7%		83.4%	
<b>Freight Tonnes Kilometers (FTK, in 1000)</b>				
Intercontinental	97'449		866'094	

<sup>1)</sup> Revenue Passengers

<sup>2)</sup> SLF = RPK / ASK  
deviation in % pts

<sup>3)</sup> Including mail  
deviation in % pts

## Traffic Statistics September 2004 LX Scheduled Services



	September		Cumulative	
	2004	2003	2004	2003
<b>Number of Passengers <sup>1)</sup></b>				
Europe	711'750		6'148'992	
Intercontinental	228'879		2'082'964	
<b>Total</b>	<b>940'629</b>		<b>8'231'956</b>	
<b>Flights</b>				
Europe	13'288		134'993	
Intercontinental	1'676		15'675	
<b>Total</b>	<b>14'964</b>		<b>150'668</b>	
<b>Available Seat km (ASK, in mill)</b>				
Europe	811		8'092	
Intercontinental	1'878		17'821	
<b>Total</b>	<b>2'689</b>		<b>25'913</b>	
<b>Revenue Passenger km (RPK, in mill)</b>				
Europe	553		4'776	
Intercontinental	1'465		13'774	
<b>Total</b>	<b>2'018</b>		<b>18'549</b>	
<b>Seat Load Factor (SLF %) <sup>2)</sup></b>				
Europe	68.2%		59.0%	
Intercontinental	78.0%		77.3%	
<b>Total</b>	<b>75.0%</b>		<b>71.6%</b>	
<b>Freight Load Factor (%) <sup>3)</sup></b>				
Intercontinental	85.2%		83.6%	
<b>Freight Tonnes Kilometers (FTK, in 1000)</b>				
Intercontinental	111'664		977'758	

<sup>1)</sup> Revenue Passengers

<sup>2)</sup> SLF = RPK / ASK  
deviation in % pts

<sup>3)</sup> Including mail  
deviation in % pts

## Traffic Statistics October 2004 LX Scheduled Services



	October		Cumulative	
	2004	2003	2004	2003
<b>Number of Passengers <sup>1)</sup></b>				
Europe	727'741		6'876'733	
Intercontinental	238'261		2'321'225	
Total	966'002		9'197'958	
<b>Flights</b>				
Europe	12'801		147'794	
Intercontinental	1'707		17'382	
Total	14'508		165'176	
<b>Available Seat km (ASK, in mill)</b>				
Europe	807		8'899	
Intercontinental	1'960		19'781	
Total	2'767		28'680	
<b>Revenue Passenger km (RPK, in mill)</b>				
Europe	557		5'333	
Intercontinental	1'601		15'375	
Total	2'159		20'708	
<b>Seat Load Factor (SLF %) <sup>2)</sup></b>				
Europe	69.0%		59.9%	
Intercontinental	81.7%		77.7%	
Total	78.0%		72.2%	
<b>Freight Load Factor (%) <sup>3)</sup></b>				
Intercontinental	85.5%		83.8%	
<b>Freight Tonnes Kilometers (FTK, in 1000)</b>				
Intercontinental	104'207		1'081'965	

<sup>1)</sup> Revenue Passengers

<sup>2)</sup> SLF = RPK / ASK  
deviation in % pts

<sup>3)</sup> Including mail  
deviation in % pts

## Traffic Statistics November 2004 LX Scheduled Services



	November		Cumulative	
	2004	2003	2004	2003
<b>Number of Passengers <sup>1)</sup></b>				
Europe	533'209		7'409'942	
Intercontinental	186'914		2'508'139	
Total	720'123		9'918'081	
<b>Flights</b>				
Europe	10'510		158'304	
Intercontinental	1'417		18'799	
Total	11'927		177'103	
<b>Available Seat km (ASK, in mill)</b>				
Europe	691		9'590	
Intercontinental	1'691		21'471	
Total	2'382		31'062	
<b>Revenue Passenger km (RPK, in mill)</b>				
Europe	392		5'725	
Intercontinental	1'319		16'694	
Total	1'711		22'419	
<b>Seat Load Factor (SLF %) <sup>2)</sup></b>				
Europe	56.8%		59.7%	
Intercontinental	78.0%		77.8%	
Total	71.8%		72.2%	
<b>Freight Load Factor (%) <sup>3)</sup></b>				
Intercontinental	87.7%		84.2%	
<b>Freight Tonnes Kilometers (FTK, in 1000)</b>				
Intercontinental	98'420		1'180'385	

<sup>1)</sup> Revenue Passengers

<sup>2)</sup> SLF = RPK / ASK  
deviation in % pts

<sup>3)</sup> Including mail  
deviation in % pts

## Traffic Statistics December 2004 LX Scheduled Services



	December		Cumulative	
	2004	2003	2004	2003
<b>Number of Passengers <sup>1)</sup></b>				
Europe	542'537		7'952'479	
Intercontinental	200'097		2'708'236	
Total	742'634		10'660'715	
<b>Flights</b>				
Europe	10'535		168'839	
Intercontinental	1'448		20'247	
Total	11'983		189'086	
<b>Available Seat km (ASK, in mill)</b>				
Europe	695		10'285	
Intercontinental	1'722		23'193	
Total	2'417		33'478	
<b>Revenue Passenger km (RPK, in mill)</b>				
Europe	403		6'128	
Intercontinental	1'401		18'095	
Total	1'804		24'223	
<b>Seat Load Factor (SLF %) <sup>2)</sup></b>				
Europe	58.1%		59.6%	
Intercontinental	81.3%		78.0%	
Total	74.6%		72.4%	
<b>Freight Load Factor (%) <sup>3)</sup></b>				
Intercontinental	86.7%		84.4%	
<b>Freight Tonnes Kilometers (FTK, in 1000)</b>				
Intercontinental	94'363		1'274'748	

<sup>1)</sup> Revenue Passengers

<sup>2)</sup> SLF = RPK / ASK  
deviation in % pts

<sup>3)</sup> Including mail  
deviation in % pts