

SWISS traffic figures

June 2004



SWISS sees slight improvement in its June load factors

SWISS recorded a systemwide seat load factor of 76.5% on its scheduled services for June 2004. With total production for the month 17.1% less than in June 2003 and total demand showing a smaller 16.2% year-on-year decline, the monthly seat load factor result was a slight 0.8-percentage-point improvement on the prior-year period. Seat load factor on the European network totalled 65.4%, a decline of 0.6 percentage points on June 2003. Seat load factor on SWISS's intercontinental services rose 1.6 percentage points to 81.5%. SWISS carried a total of 796 612 passengers on its scheduled services in June. Year-on-year comparisons of actual passenger numbers are not meaningful, however, in view of the sizeable capacity reductions which resulted from modifications to the SWISS route network in the intervening months.

Seat load factor on **European services** for June 2004 amounted to 65.4%, a slight decline on the 66.0% posted for the prior-year period. Available-seat-kilometre (ASK) production was 14.6% down on June 2003, while the associated decline in revenue-passenger-kilometre (RPK) traffic amounted to 15.3%. Cumulative seat load factor for the first six months of 2004 totalled 60.3%, a 5.6-point improvement on the same period last year.

June seat load factor on services to the UK rose 4.2 points to 65.0%. Services to Germany also posted a 2.0-point increase, to 57.7%. Flights to Austria, however, sustained a 3.4-point year-on-year decline to 61.5%. The result is due in no small part to the fact that SWISS now shares the Zurich-Vienna route with three scheduled competitors – an overcapacity which is having an increasingly adverse impact on load factors. Services to Italy witnessed a 6.4-point improvement to 62.2%. The 59.2% recorded on flights between Switzerland and France was a 10.0-point decline on June 2003. The trend is due partly to an increase in SWISS's own capacity and partly to intensified competition from budget carriers, especially on the Geneva-Paris route. Services to Belgium posted a seat load factor of 53.6% – an 11.8-point decline which can be attributed to the 22.6% increase in SWISS's own production.

Seat load factor on **intercontinental services** totalled 81.5% for June 2004, which compares to 79.9% for the same month last year. ASK capacity was 18.2% lower than in June 2003, while RPK traffic sustained a smaller 16.5% decline. The corresponding 1.6-point rise in seat load factor marked the fourth month in succession in which intercontinental loadings were an improvement on their prior-year equivalents. The trend was reflected in SWISS's cumulative seat load factor for the first half-year, which, at 79.1%, was 3.8 percentage points up on January-to-June 2003.

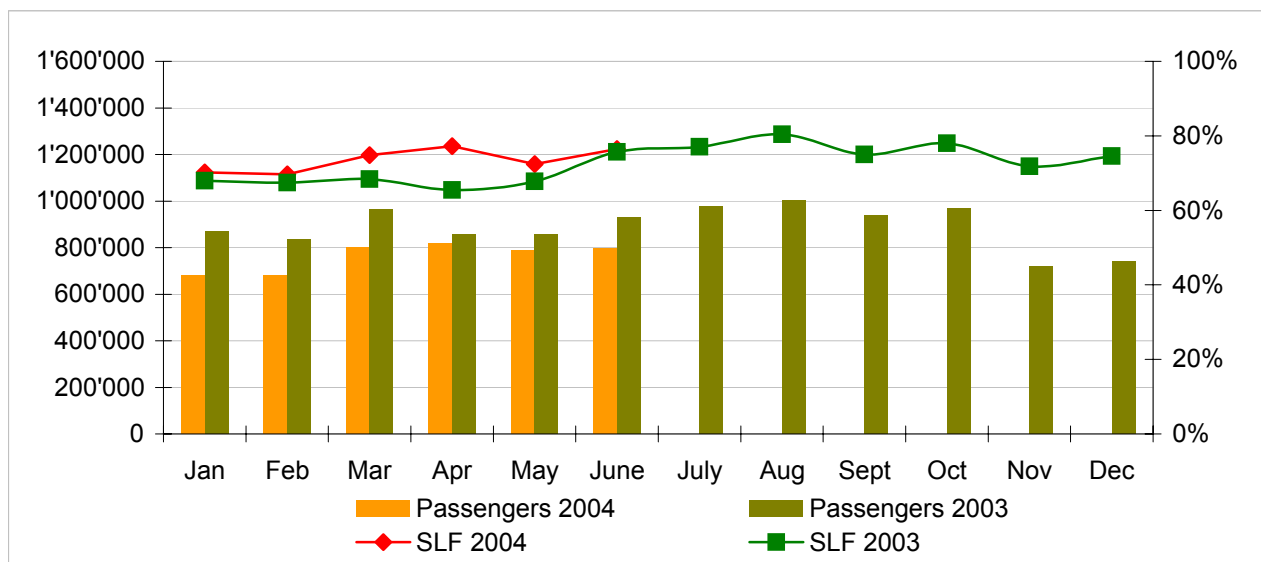
June seat load factor on North American services rose 4.4 points to an impressive 91.7%, continuing the positive trends seen in the previous months. The 79.5% achieved on Far East services was also a 3.8-point improvement on June 2003. Flights to the Middle East suffered a decline in demand, however, and the 61.4% seat load factor recorded was a 10.8-point decline on the prior-year period. Services to South America posted a seat load factor of 84.3%, up 1.1 points on 2003, while routes to Africa saw their seat load factor decline 1.4 points to 68.2%.

Traffic Statistics January-December 2004 LX Scheduled Services



| | Passengers Europe | Passengers Intercontinental | Passengers Total | SLF Europe | SLF Intercontinental | SLF Total |
|-----|-------------------|-----------------------------|------------------|------------|----------------------|-----------|
| Jan | 488'989 | 190'710 | 679'699 | 51.5% | 77.8% | 70.2% |
| Feb | 504'960 | 173'962 | 678'922 | 54.6% | 75.9% | 69.6% |
| Mar | 602'964 | 198'178 | 801'142 | 60.3% | 81.1% | 74.8% |
| Apr | 629'871 | 189'881 | 819'752 | 66.8% | 81.9% | 77.2% |
| May | 606'582 | 182'270 | 788'852 | 62.8% | 76.8% | 72.5% |
| Jun | 610'949 | 185'663 | 796'612 | 65.4% | 81.5% | 76.5% |
| Jul | | | | | | |
| Aug | | | | | | |
| Sep | | | | | | |
| Oct | | | | | | |
| Nov | | | | | | |
| Dec | | | | | | |

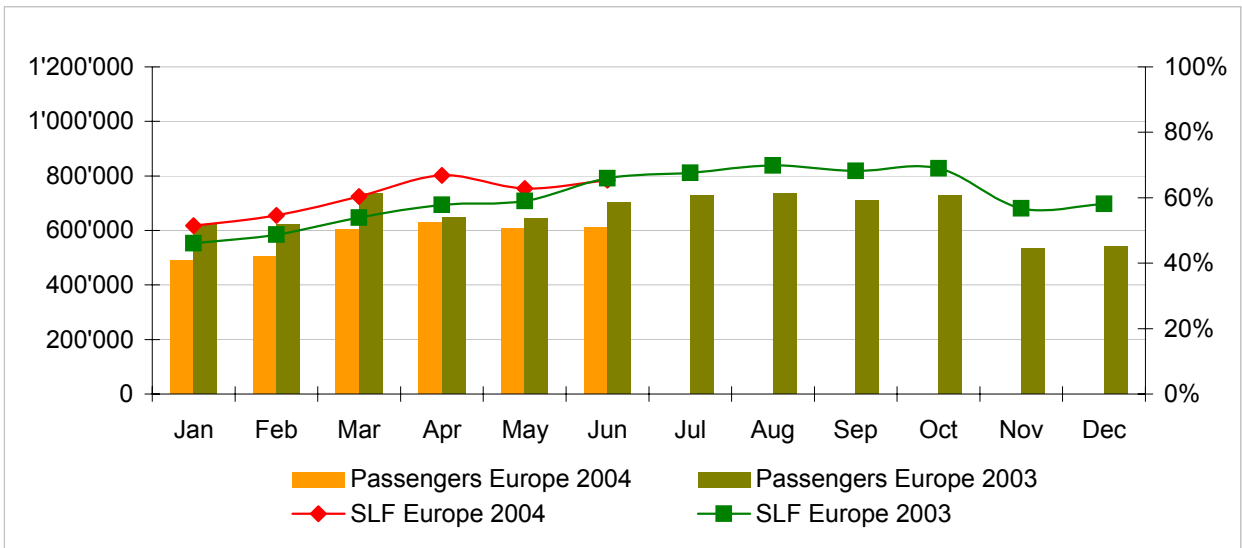
Comparison Passengers and Seat Load Factor (SLF %) versus prior year



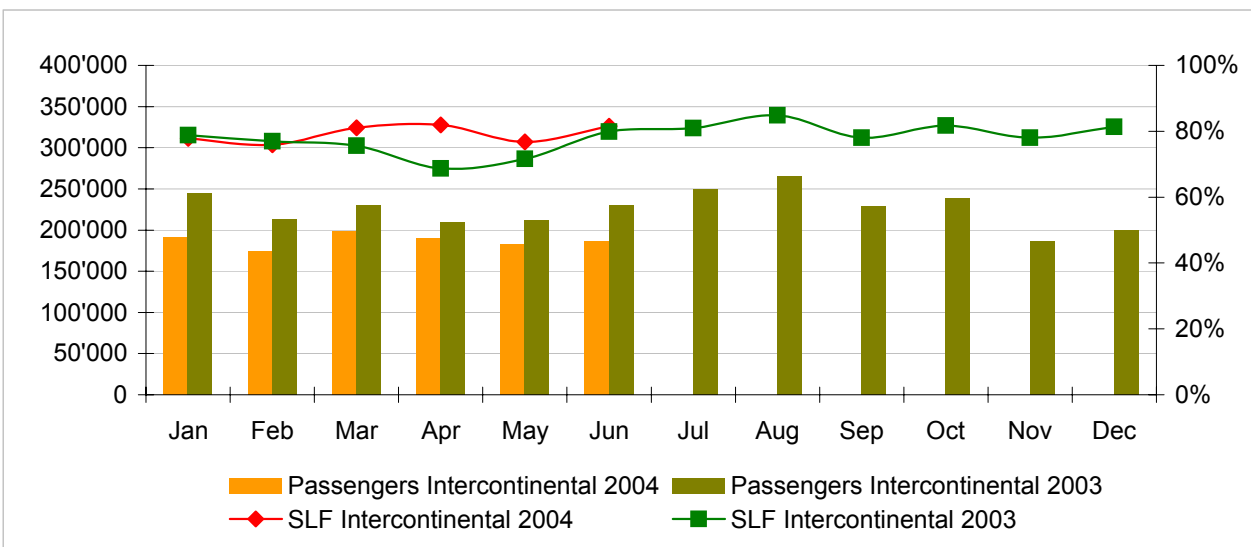
Next updates:

- July 04 figures August 10th, 2004
- August 04 figures September 10th, 2004
- September 04 figures October 11th, 2004

Passengers and Seat Load Factor (SLF %) European Routes
 Comparison versus prior year



Passengers and Seat Load Factor (SLF %) Intercontinental Routes
 Comparison versus prior year



Traffic Statistics January 2004 LX Scheduled Services



Swiss
International
Air Lines

| | January | | | Cumulative | | |
|---|---------|---------|--------|------------|---------|--------|
| | 2004 | 2003 | | 2004 | 2003 | |
| Number of Passengers ¹⁾ | | | | | | |
| Europe | 488'989 | 623'788 | -21.6% | 488'989 | 623'788 | -21.6% |
| Intercontinental | 190'710 | 245'067 | -22.2% | 190'710 | 245'067 | -22.2% |
| Total | 679'699 | 868'855 | -21.8% | 679'699 | 868'855 | -21.8% |
| Flights | | | | | | |
| Europe | 10'640 | 17'314 | -38.5% | 10'640 | 17'314 | -38.5% |
| Intercontinental | 1'446 | 1'836 | -21.2% | 1'446 | 1'836 | -21.2% |
| Total | 12'086 | 19'150 | -36.9% | 12'086 | 19'150 | -36.9% |
| Available Seat km (ASK, in mill) | | | | | | |
| Europe | 703 | 1'043 | -32.6% | 703 | 1'043 | -32.6% |
| Intercontinental | 1'724 | 2'094 | -17.7% | 1'724 | 2'094 | -17.7% |
| Total | 2'427 | 3'136 | -22.6% | 2'427 | 3'136 | -22.6% |
| Revenue Passenger km (RPK, in mill) | | | | | | |
| Europe | 362 | 480 | -24.6% | 362 | 480 | -24.6% |
| Intercontinental | 1'341 | 1'651 | -18.7% | 1'341 | 1'651 | -18.7% |
| Total | 1'704 | 2'131 | -20.1% | 1'704 | 2'131 | -20.1% |
| Seat Load Factor (SLF %) ²⁾ | | | | | | |
| Europe | 51.5% | 46.1% | 5.4% | 51.5% | 46.1% | 5.4% |
| Intercontinental | 77.8% | 78.9% | -1.0% | 77.8% | 78.9% | -1.0% |
| Total | 70.2% | 68.0% | 2.2% | 70.2% | 68.0% | 2.2% |
| Freight Load Factor (%) ³⁾ | | | | | | |
| Intercontinental | 80.0% | 77.9% | 2.1% | 80.0% | 77.9% | 2.1% |
| Freight Tonnes Kilometers (FTK, in 1000) | | | | | | |
| Intercontinental | 85'117 | 106'301 | -19.9% | 85'117 | 106'301 | -19.9% |

¹⁾ Revenue Passengers

²⁾ SLF = RPK / ASK
deviation in % pts

³⁾ Including mail
deviation in % pts

Traffic Statistics February 2004 LX Scheduled Services



Swiss
International
Air Lines

| | February | | | Cumulative | | |
|---|----------|---------|--------|------------|-----------|--------|
| | 2004 | 2003 | | 2004 | 2003 | |
| Number of Passengers ¹⁾ | | | | | | |
| Europe | 504'960 | 622'717 | -18.9% | 993'949 | 1'246'505 | -20.3% |
| Intercontinental | 173'962 | 212'633 | -18.2% | 364'672 | 457'700 | -20.3% |
| Total | 678'922 | 835'350 | -18.7% | 1'358'621 | 1'704'205 | -20.3% |
| Flights | | | | | | |
| Europe | 10'149 | 16'171 | -37.2% | 20'789 | 33'485 | -37.9% |
| Intercontinental | 1'352 | 1'642 | -17.7% | 2'798 | 3'478 | -19.6% |
| Total | 11'501 | 17'813 | -35.4% | 23'587 | 36'963 | -36.2% |
| Available Seat km (ASK, in mill) | | | | | | |
| Europe | 669 | 957 | -30.1% | 1'372 | 2'000 | -31.4% |
| Intercontinental | 1'603 | 1'875 | -14.5% | 3'327 | 3'968 | -16.2% |
| Total | 2'272 | 2'832 | -19.8% | 4'699 | 5'968 | -21.3% |
| Revenue Passenger km (RPK, in mill) | | | | | | |
| Europe | 365 | 466 | -21.7% | 727 | 947 | -23.2% |
| Intercontinental | 1'217 | 1'443 | -15.7% | 2'558 | 3'094 | -17.3% |
| Total | 1'582 | 1'910 | -17.2% | 3'285 | 4'041 | -18.7% |
| Seat Load Factor (SLF %) ²⁾ | | | | | | |
| Europe | 54.6% | 48.7% | 5.9% | 53.0% | 47.3% | 5.7% |
| Intercontinental | 75.9% | 77.0% | -1.1% | 76.9% | 78.0% | -1.1% |
| Total | 69.6% | 67.4% | 2.2% | 69.9% | 67.7% | 2.2% |
| Freight Load Factor (%) ³⁾ | | | | | | |
| Intercontinental | 90.0% | 86.0% | 4.0% | 85.0% | 82.0% | 3.0% |
| Freight Tonnes Kilometers (FTK, in 1000) | | | | | | |
| Intercontinental | 97'771 | 108'934 | -10.2% | 182'888 | 215'235 | -15.0% |

¹⁾ Revenue Passengers

²⁾ SLF = RPK / ASK
deviation in % pts

³⁾ Including mail
deviation in % pts

Traffic Statistics March 2004 LX Scheduled Services



Swiss
International
Air Lines

| | March | | | Cumulative | | |
|---|---------|---------|--------|------------|-----------|--------|
| | 2004 | 2003 | | 2004 | 2003 | |
| Number of Passengers ¹⁾ | | | | | | |
| Europe | 602'964 | 735'116 | -18.0% | 1'596'913 | 1'981'621 | -19.4% |
| Intercontinental | 198'178 | 230'492 | -14.0% | 562'850 | 688'192 | -18.2% |
| Total | 801'142 | 965'608 | -17.0% | 2'159'763 | 2'669'813 | -19.1% |
| Flights | | | | | | |
| Europe | 10'988 | 17'770 | -38.2% | 31'777 | 51'255 | -38.0% |
| Intercontinental | 1'419 | 1'819 | -22.0% | 4'217 | 5'297 | -20.4% |
| Total | 12'407 | 19'589 | -36.7% | 35'994 | 56'552 | -36.4% |
| Available Seat km (ASK, in mill) | | | | | | |
| Europe | 729 | 1'044 | -30.2% | 2'101 | 3'044 | -31.0% |
| Intercontinental | 1'686 | 2'087 | -19.2% | 5'012 | 6'056 | -17.2% |
| Total | 2'414 | 3'132 | -22.9% | 7'113 | 9'100 | -21.8% |
| Revenue Passenger km (RPK, in mill) | | | | | | |
| Europe | 440 | 563 | -22.0% | 1'167 | 1'510 | -22.7% |
| Intercontinental | 1'367 | 1'578 | -13.4% | 3'925 | 4'672 | -16.0% |
| Total | 1'806 | 2'141 | -15.7% | 5'092 | 6'182 | -17.6% |
| Seat Load Factor (SLF %) ²⁾ | | | | | | |
| Europe | 60.3% | 54.0% | 6.3% | 55.5% | 49.6% | 5.9% |
| Intercontinental | 81.1% | 75.6% | 5.5% | 78.3% | 77.2% | 1.1% |
| Total | 74.8% | 68.4% | 6.4% | 71.6% | 67.9% | 3.7% |
| Freight Load Factor (%) ³⁾ | | | | | | |
| Intercontinental | 91.0% | 87.4% | 3.6% | 87.0% | 83.8% | 3.2% |
| Freight Tonnes Kilometers (FTK, in 1000) | | | | | | |
| Intercontinental | 104'478 | 120'393 | -13.2% | 287'366 | 335'628 | -14.4% |

¹⁾ Revenue Passengers

²⁾ SLF = RPK / ASK
deviation in % pts

³⁾ Including mail
deviation in % pts

Traffic Statistics April 2004 LX Scheduled Services



Swiss
International
Air Lines

| | April | | | Cumulative | | |
|---|---------|---------|--------|------------|-----------|--------|
| | 2004 | 2003 | | 2004 | 2003 | |
| Number of Passengers ¹⁾ | | | | | | |
| Europe | 629'871 | 647'474 | -2.7% | 2'226'784 | 2'629'095 | -15.3% |
| Intercontinental | 189'881 | 209'610 | -9.4% | 752'731 | 897'802 | -16.2% |
| Total | 819'752 | 857'084 | -4.4% | 2'979'515 | 3'526'897 | -15.5% |
| Flights | | | | | | |
| Europe | 10'622 | 14'025 | -24.3% | 42'399 | 65'280 | -35.1% |
| Intercontinental | 1'299 | 1'727 | -24.8% | 5'516 | 7'024 | -21.5% |
| Total | 11'921 | 15'752 | -24.3% | 47'915 | 72'304 | -33.7% |
| Available Seat km (ASK, in mill) | | | | | | |
| Europe | 705 | 867 | -18.7% | 2'806 | 3'911 | -28.3% |
| Intercontinental | 1'561 | 2'010 | -22.3% | 6'573 | 8'066 | -18.5% |
| Total | 2'266 | 2'877 | -21.2% | 9'379 | 11'977 | -21.7% |
| Revenue Passenger km (RPK, in mill) | | | | | | |
| Europe | 471 | 501 | -6.0% | 1'638 | 2'011 | -18.5% |
| Intercontinental | 1'278 | 1'381 | -7.5% | 5'203 | 6'054 | -14.1% |
| Total | 1'749 | 1'882 | -7.1% | 6'841 | 8'065 | -15.2% |
| Seat Load Factor (SLF %) ²⁾ | | | | | | |
| Europe | 66.8% | 57.8% | 9.0% | 58.4% | 51.4% | 7.0% |
| Intercontinental | 81.9% | 68.7% | 13.2% | 79.2% | 75.1% | 4.1% |
| Total | 77.2% | 65.4% | 11.8% | 72.9% | 67.3% | 5.6% |
| Freight Load Factor (%) ³⁾ | | | | | | |
| Intercontinental | 83.0% | 82.6% | 0.4% | 86.0% | 83.5% | 2.5% |
| Freight Tonnes Kilometers (FTK, in 1000) | | | | | | |
| Intercontinental | 88'759 | 116'773 | -24.0% | 376'125 | 452'401 | -16.9% |

¹⁾ Revenue Passengers

²⁾ SLF = RPK / ASK
deviation in % pts

³⁾ Including mail
deviation in % pts

Traffic Statistics May 2004 LX Scheduled Services



| | May | | | Cumulative | | |
|---|---------|---------|--------|------------|-----------|--------|
| | 2004 | 2003 | | 2004 | 2003 | |
| Number of Passengers ¹⁾ | | | | | | |
| Europe | 606'582 | 643'856 | -5.8% | 2'833'366 | 3'272'951 | -13.4% |
| Intercontinental | 182'270 | 211'550 | -13.8% | 935'001 | 1'109'352 | -15.7% |
| Total | 788'852 | 855'406 | -7.8% | 3'768'367 | 4'382'303 | -14.0% |
| Flights | | | | | | |
| Europe | 10'883 | 14'297 | -23.9% | 53'282 | 79'577 | -33.0% |
| Intercontinental | 1'331 | 1'715 | -22.4% | 6'847 | 8'739 | -21.7% |
| Total | 12'214 | 16'012 | -23.7% | 60'129 | 88'316 | -31.9% |
| Available Seat km (ASK, in mill) | | | | | | |
| Europe | 718 | 846 | -15.1% | 3'524 | 4'757 | -25.9% |
| Intercontinental | 1'607 | 1'936 | -17.0% | 8'180 | 10'002 | -18.2% |
| Total | 2'325 | 2'782 | -16.4% | 11'704 | 14'759 | -20.7% |
| Revenue Passenger km (RPK, in mill) | | | | | | |
| Europe | 451 | 499 | -9.6% | 2'089 | 2'510 | -16.8% |
| Intercontinental | 1'234 | 1'386 | -11.0% | 6'437 | 7'440 | -13.5% |
| Total | 1'685 | 1'885 | -10.6% | 8'526 | 9'950 | -14.3% |
| Seat Load Factor (SLF %) ²⁾ | | | | | | |
| Europe | 62.8% | 59.0% | 3.8% | 59.3% | 52.8% | 6.5% |
| Intercontinental | 76.8% | 71.6% | 5.2% | 78.7% | 74.4% | 4.3% |
| Total | 72.5% | 67.7% | 4.8% | 72.8% | 67.4% | 5.4% |
| Freight Load Factor (%) ³⁾ | | | | | | |
| Intercontinental | 84.7% | 85.5% | -0.8% | 85.7% | 83.9% | 1.8% |
| Freight Tonnes Kilometers (FTK, in 1000) | | | | | | |
| Intercontinental | 95'309 | 110'594 | -13.8% | 471'434 | 562'995 | -16.3% |

¹⁾ Revenue Passengers

²⁾ SLF = RPK / ASK
deviation in % pts

³⁾ Including mail
deviation in % pts

Traffic Statistics June 2004 LX Scheduled Services



Swiss
International
Air Lines

| | June | | | Cumulative | | |
|--|---------|---------|--------|------------|-----------|--------|
| | 2004 | 2003 | | 2004 | 2003 | |
| Number of Passengers ¹⁾ | | | | | | |
| Europe | 610'949 | 700'468 | -12.8% | 3'444'315 | 3'973'419 | -13.3% |
| Intercontinental | 185'663 | 230'101 | -19.3% | 1'120'664 | 1'339'453 | -16.3% |
| Total | 796'612 | 930'569 | -14.4% | 4'564'979 | 5'312'872 | -14.1% |
| Flights | | | | | | |
| Europe | 10'574 | 13'978 | -24.4% | 63'856 | 93'555 | -31.7% |
| Intercontinental | 1'282 | 1'686 | -24.0% | 8'129 | 10'425 | -22.0% |
| Total | 11'856 | 15'664 | -24.3% | 71'985 | 103'980 | -30.8% |
| Available Seat km (ASK, in mill) | | | | | | |
| Europe | 707 | 828 | -14.6% | 4'231 | 5'585 | -24.2% |
| Intercontinental | 1'547 | 1'892 | -18.2% | 9'727 | 11'894 | -18.2% |
| Total | 2'254 | 2'719 | -17.1% | 13'958 | 17'479 | -20.1% |
| Revenue Passenger km (RPK, in mill) | | | | | | |
| Europe | 462 | 546 | -15.3% | 2'551 | 3'056 | -16.5% |
| Intercontinental | 1'261 | 1'511 | -16.5% | 7'698 | 8'951 | -14.0% |
| Total | 1'724 | 2'057 | -16.2% | 10'249 | 12'007 | -14.6% |
| Seat Load Factor (SLF %) ²⁾ | | | | | | |
| Europe | 65.4% | 66.0% | -0.6% | 60.3% | 54.7% | 5.6% |
| Intercontinental | 81.5% | 79.9% | 1.6% | 79.1% | 75.3% | 3.8% |
| Total | 76.5% | 75.7% | 0.8% | 73.4% | 68.7% | 4.7% |
| Estimate Freight Load Factor (%) ³⁾ | | | | | | |
| Intercontinental | 86.2% | 84.5% | 1.7% | 85.8% | 84.0% | 1.8% |
| Estimate Freight Tonnes Kilometers (FTK, in 1000) | | | | | | |
| Intercontinental | 98'533 | 106'280 | -7.3% | 569'967 | 669'275 | -14.8% |

¹⁾ Revenue Passengers

²⁾ SLF = RPK / ASK
deviation in % pts

³⁾ Including mail
deviation in % pts

Traffic Statistics July 2004 LX Scheduled Services



| | July | | Cumulative | |
|---|---------|------|------------|------|
| | 2004 | 2003 | 2004 | 2003 |
| Number of Passengers ¹⁾ | | | | |
| Europe | 727'706 | | 4'701'125 | |
| Intercontinental | 249'520 | | 1'588'973 | |
| Total | 977'226 | | 6'290'098 | |
| Flights | | | | |
| Europe | 14'286 | | 107'841 | |
| Intercontinental | 1'771 | | 12'196 | |
| Total | 16'057 | | 120'037 | |
| Available Seat km (ASK, in mill) | | | | |
| Europe | 850 | | 6'435 | |
| Intercontinental | 2'015 | | 13'909 | |
| Total | 2'865 | | 20'343 | |
| Revenue Passenger km (RPK, in mill) | | | | |
| Europe | 575 | | 3'631 | |
| Intercontinental | 1'633 | | 10'584 | |
| Total | 2'207 | | 14'215 | |
| Seat Load Factor (SLF %) ²⁾ | | | | |
| Europe | 67.6% | | 56.4% | |
| Intercontinental | 81.0% | | 76.1% | |
| Total | 77.1% | | 69.9% | |
| Freight Load Factor (%) ³⁾ | | | | |
| Intercontinental | 83.7% | | 83.9% | |
| Freight Tonnes Kilometers (FTK, in 1000) | | | | |
| Intercontinental | 99'370 | | 768'645 | |

¹⁾ Revenue Passengers

²⁾ SLF = RPK / ASK
deviation in % pts

³⁾ Including mail
deviation in % pts

Traffic Statistics August 2004 LX Scheduled Services



| | August | | Cumulative | |
|---|-----------|------|------------|------|
| | 2004 | 2003 | 2004 | 2003 |
| Number of Passengers ¹⁾ | | | | |
| Europe | 736'117 | | 5'437'242 | |
| Intercontinental | 265'112 | | 1'854'085 | |
| Total | 1'001'229 | | 7'291'327 | |
| Flights | | | | |
| Europe | 13'864 | | 121'705 | |
| Intercontinental | 1'803 | | 13'999 | |
| Total | 15'667 | | 135'704 | |
| Available Seat km (ASK, in mill) | | | | |
| Europe | 847 | | 7'282 | |
| Intercontinental | 2'034 | | 15'943 | |
| Total | 2'881 | | 23'224 | |
| Revenue Passenger km (RPK, in mill) | | | | |
| Europe | 592 | | 4'223 | |
| Intercontinental | 1'725 | | 12'309 | |
| Total | 2'317 | | 16'531 | |
| Seat Load Factor (SLF %) ²⁾ | | | | |
| Europe | 69.9% | | 58.0% | |
| Intercontinental | 84.8% | | 77.2% | |
| Total | 80.4% | | 71.2% | |
| Freight Load Factor (%) ³⁾ | | | | |
| Intercontinental | 79.7% | | 83.4% | |
| Freight Tonnes Kilometers (FTK, in 1000) | | | | |
| Intercontinental | 97'449 | | 866'094 | |

¹⁾ Revenue Passengers

²⁾ SLF = RPK / ASK
deviation in % pts

³⁾ Including mail
deviation in % pts

Traffic Statistics September 2004 LX Scheduled Services



| | September | | Cumulative | |
|---|----------------|------|------------------|------|
| | 2004 | 2003 | 2004 | 2003 |
| Number of Passengers ¹⁾ | | | | |
| Europe | 711'750 | | 6'148'992 | |
| Intercontinental | 228'879 | | 2'082'964 | |
| Total | 940'629 | | 8'231'956 | |
| Flights | | | | |
| Europe | 13'288 | | 134'993 | |
| Intercontinental | 1'676 | | 15'675 | |
| Total | 14'964 | | 150'668 | |
| Available Seat km (ASK, in mill) | | | | |
| Europe | 811 | | 8'092 | |
| Intercontinental | 1'878 | | 17'821 | |
| Total | 2'689 | | 25'913 | |
| Revenue Passenger km (RPK, in mill) | | | | |
| Europe | 553 | | 4'776 | |
| Intercontinental | 1'465 | | 13'774 | |
| Total | 2'018 | | 18'549 | |
| Seat Load Factor (SLF %) ²⁾ | | | | |
| Europe | 68.2% | | 59.0% | |
| Intercontinental | 78.0% | | 77.3% | |
| Total | 75.0% | | 71.6% | |
| Freight Load Factor (%) ³⁾ | | | | |
| Intercontinental | 85.2% | | 83.6% | |
| Freight Tonnes Kilometers (FTK, in 1000) | | | | |
| Intercontinental | 111'664 | | 977'758 | |

¹⁾ Revenue Passengers

²⁾ SLF = RPK / ASK
deviation in % pts

³⁾ Including mail
deviation in % pts

Traffic Statistics October 2004 LX Scheduled Services



| | October | | Cumulative | |
|---|---------|------|------------|------|
| | 2004 | 2003 | 2004 | 2003 |
| Number of Passengers ¹⁾ | | | | |
| Europe | 727'741 | | 6'876'733 | |
| Intercontinental | 238'261 | | 2'321'225 | |
| Total | 966'002 | | 9'197'958 | |
| Flights | | | | |
| Europe | 12'801 | | 147'794 | |
| Intercontinental | 1'707 | | 17'382 | |
| Total | 14'508 | | 165'176 | |
| Available Seat km (ASK, in mill) | | | | |
| Europe | 807 | | 8'899 | |
| Intercontinental | 1'960 | | 19'781 | |
| Total | 2'767 | | 28'680 | |
| Revenue Passenger km (RPK, in mill) | | | | |
| Europe | 557 | | 5'333 | |
| Intercontinental | 1'601 | | 15'375 | |
| Total | 2'159 | | 20'708 | |
| Seat Load Factor (SLF %) ²⁾ | | | | |
| Europe | 69.0% | | 59.9% | |
| Intercontinental | 81.7% | | 77.7% | |
| Total | 78.0% | | 72.2% | |
| Freight Load Factor (%) ³⁾ | | | | |
| Intercontinental | 85.5% | | 83.8% | |
| Freight Tonnes Kilometers (FTK, in 1000) | | | | |
| Intercontinental | 104'207 | | 1'081'965 | |

¹⁾ Revenue Passengers

²⁾ SLF = RPK / ASK
deviation in % pts

³⁾ Including mail
deviation in % pts

Traffic Statistics November 2004 LX Scheduled Services



| | November | | Cumulative | |
|---|----------|------|------------|------|
| | 2004 | 2003 | 2004 | 2003 |
| Number of Passengers ¹⁾ | | | | |
| Europe | 533'209 | | 7'409'942 | |
| Intercontinental | 186'914 | | 2'508'139 | |
| Total | 720'123 | | 9'918'081 | |
| Flights | | | | |
| Europe | 10'510 | | 158'304 | |
| Intercontinental | 1'417 | | 18'799 | |
| Total | 11'927 | | 177'103 | |
| Available Seat km (ASK, in mill) | | | | |
| Europe | 691 | | 9'590 | |
| Intercontinental | 1'691 | | 21'471 | |
| Total | 2'382 | | 31'062 | |
| Revenue Passenger km (RPK, in mill) | | | | |
| Europe | 392 | | 5'725 | |
| Intercontinental | 1'319 | | 16'694 | |
| Total | 1'711 | | 22'419 | |
| Seat Load Factor (SLF %) ²⁾ | | | | |
| Europe | 56.8% | | 59.7% | |
| Intercontinental | 78.0% | | 77.8% | |
| Total | 71.8% | | 72.2% | |
| Freight Load Factor (%) ³⁾ | | | | |
| Intercontinental | 87.7% | | 84.2% | |
| Freight Tonnes Kilometers (FTK, in 1000) | | | | |
| Intercontinental | 98'420 | | 1'180'385 | |

¹⁾ Revenue Passengers

²⁾ SLF = RPK / ASK
deviation in % pts

³⁾ Including mail
deviation in % pts

Traffic Statistics December 2004 LX Scheduled Services



| | December | | Cumulative | |
|---|----------|------|------------|------|
| | 2004 | 2003 | 2004 | 2003 |
| Number of Passengers ¹⁾ | | | | |
| Europe | 542'537 | | 7'952'479 | |
| Intercontinental | 200'097 | | 2'708'236 | |
| Total | 742'634 | | 10'660'715 | |
| Flights | | | | |
| Europe | 10'535 | | 168'839 | |
| Intercontinental | 1'448 | | 20'247 | |
| Total | 11'983 | | 189'086 | |
| Available Seat km (ASK, in mill) | | | | |
| Europe | 695 | | 10'285 | |
| Intercontinental | 1'722 | | 23'193 | |
| Total | 2'417 | | 33'478 | |
| Revenue Passenger km (RPK, in mill) | | | | |
| Europe | 403 | | 6'128 | |
| Intercontinental | 1'401 | | 18'095 | |
| Total | 1'804 | | 24'223 | |
| Seat Load Factor (SLF %) ²⁾ | | | | |
| Europe | 58.1% | | 59.6% | |
| Intercontinental | 81.3% | | 78.0% | |
| Total | 74.6% | | 72.4% | |
| Freight Load Factor (%) ³⁾ | | | | |
| Intercontinental | 86.7% | | 84.4% | |
| Freight Tonnes Kilometers (FTK, in 1000) | | | | |
| Intercontinental | 94'363 | | 1'274'748 | |

¹⁾ Revenue Passengers

²⁾ SLF = RPK / ASK
deviation in % pts

³⁾ Including mail
deviation in % pts