

SWISS Traffic Figures

July 2004



SWISS improves seat load factor slightly in July

Compared to the same month a year earlier, SWISS increased its seat load factor (SLF) on scheduled services in July 2004 by 1.4 percentage points to 78.5 percent. This is a continuation of the positive trend of late. Production for the month of July was 18.7 percent lower on a year-ago comparison. With the drop in the number of seat kilometres sold limited to 17.2 percent, the seat load factor rose accordingly. In Europe, seat load factor declined by 1.7 percentage points to 65.9%. On intercontinental routes it increased by 3.2 percentage points to 84.2%. SWISS carried a total of 815,948 passengers on scheduled flights in July. A meaningful comparison of absolute passenger figures for July 04 and July 03 is impossible because of the decrease in production resulting from adjustments to the route network.

The seat load factor on **European routes** for July 2004 was 65.9%, 1.7 percentage points below the figure for the same period a year ago. The total number of available seat kilometres (ASK) for July was 14.7% lower on a year-ago comparison, against a decline in seat kilometres sold (RPK) of 16.9%. The slight decline in SLF in Europe reflects the seasonal increase in domestic passengers flying to and from Zurich on intercontinental flights, resulting in less aircraft capacity for transfer passengers from Europe. As a result, capacity utilisation on European routes declined. In addition, SWISS no longer operates flights to the Balkans, which in summer 2003 had a high seat load factor.

The seat load factor on routes to the UK dropped by 1.3 percentage points in July to 70.3%. Flights to Germany generated a seat load factor of 52.5%, a drop of 6.8 percentage points. The figure on the Austria routes was 50.8%, which translated into a decline of 8.2 percentage points on a year-ago comparison. Flights to Italy had a seat load factor of 57.5%, an improvement of 2.2 percentage points. Routes to France witnessed a drop of 9.0 percentage points, with a seat load factor of 54.8%. Production on flights to Belgium was increased by 20% on a year-ago comparison. The seat load factor was 46.8%, a drop of 12.5 percentage points from the year-ago level.

Seat load factor on **intercontinental routes** for July reached 84.2%, compared to 81.0% for the same month a year earlier. Production (ASK) was reduced by 20.4% from 2003 levels. The decline in the number of seat kilometres sold (RPK) for the same period was limited to 17.3%.

Since March, capacity utilisation figures on intercontinental routes have been consistently higher on a year-ago comparison. July saw an increase of 3.2 percentage points. Far East flights led the way with a 5.9 percentage-point increase to 85%. Also positive were North Atlantic routes, which gained 2.9 percentage points to 87.3%. The Middle East declined by 5.8 percentage points to 70%, with weaker seat load factor on flights to and from Tel Aviv having a particular impact. Here, too, the effect of a seasonally high seat load factor on intercontinental connecting flights to and from Zurich was felt. South America routes improved by 3.0 percentage points to 88%. Africa routes were better by an encouraging 5.1 percentage points, registering 81.3%.

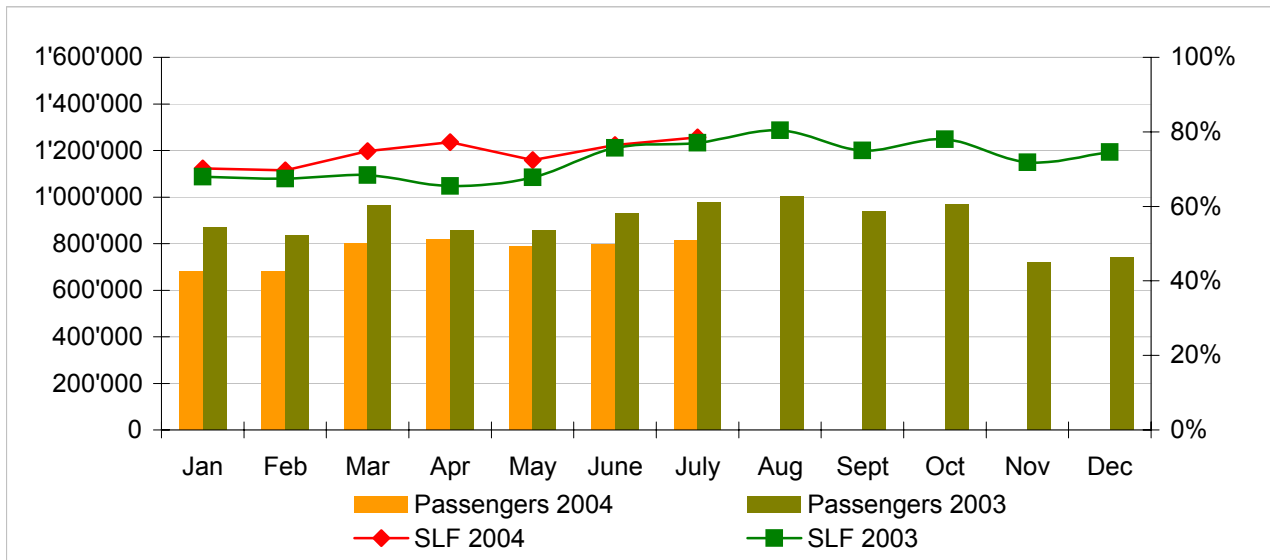
Traffic Statistics January-December 2004 LX Scheduled Services



Swiss
International
Air Lines

	Passengers Europe	Passengers Intercontinental	Passengers Total	SLF Europe	SLF Intercontinental	SLF Total
Jan	488'989	190'710	679'699	51.5%	77.8%	70.2%
Feb	504'960	173'962	678'922	54.6%	75.9%	69.6%
Mar	602'964	198'178	801'142	60.3%	81.1%	74.8%
Apr	629'871	189'881	819'752	66.8%	81.9%	77.2%
May	606'582	182'270	788'852	62.8%	76.8%	72.5%
Jun	610'949	185'663	796'612	65.4%	81.5%	76.5%
Jul	616'782	199'166	815'948	65.9%	84.2%	78.5%
Aug						
Sep						
Oct						
Nov						
Dec						

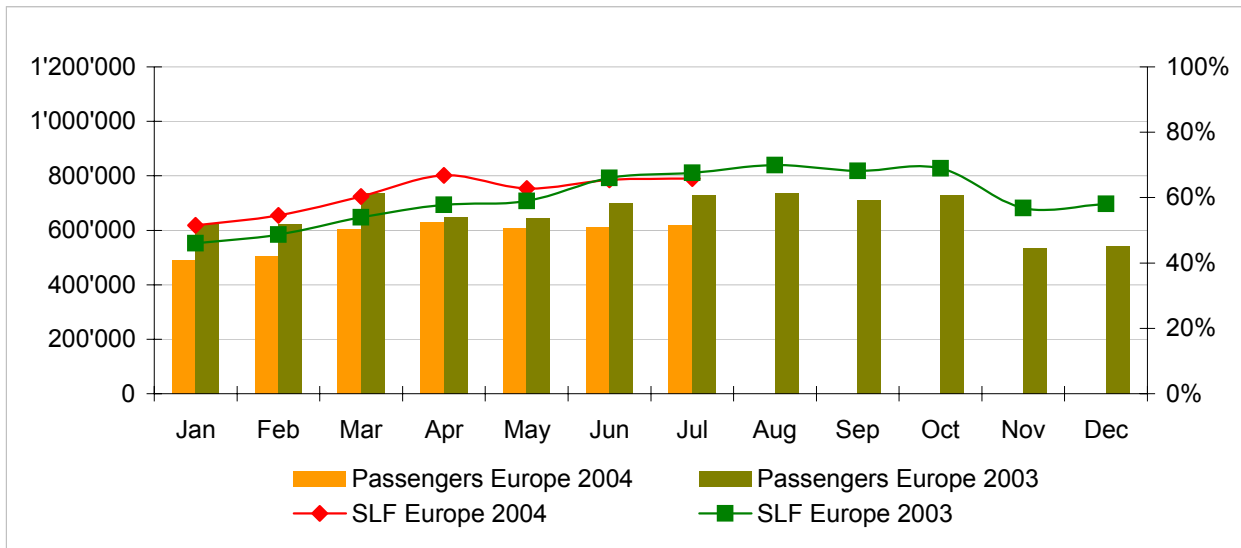
Comparison Passengers and Seat Load Factor (SLF %) versus prior year



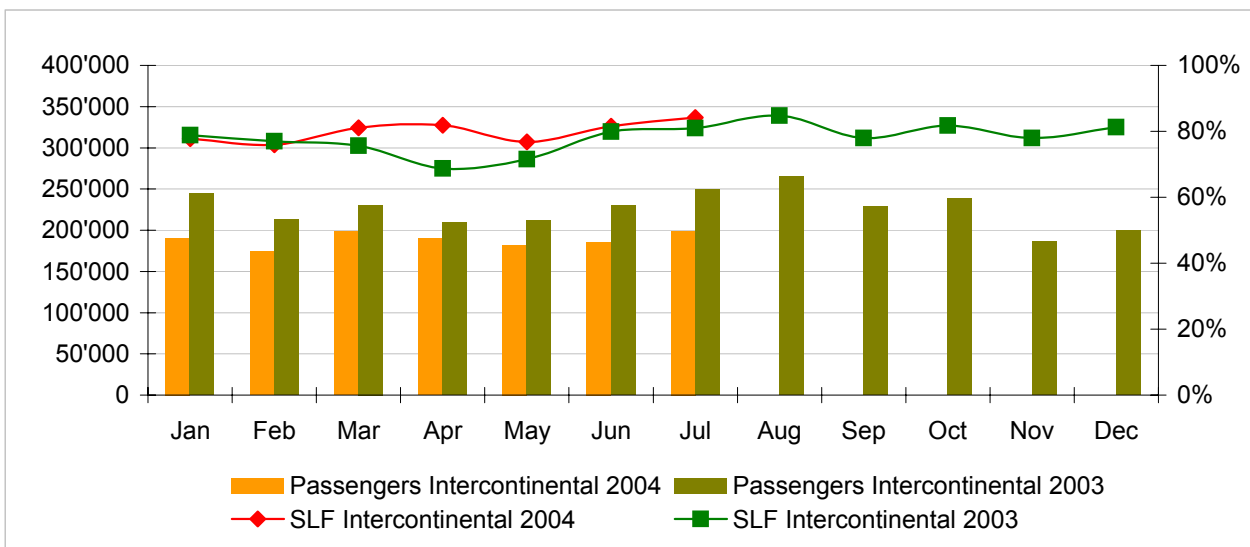
Next updates:

- August 04 figures September 10th, 2004
- September 04 figures October 11th, 2004
- October 04 figures November 10th, 2004

Passengers and Seat Load Factor (SLF %) European Routes
 Comparison versus prior year



Passengers and Seat Load Factor (SLF %) Intercontinental Routes
 Comparison versus prior year



Traffic Statistics January 2004 LX Scheduled Services



	January			Cumulative		
	2004	2003		2004	2003	
Number of Passengers ¹⁾						
Europe	488'989	623'788	-21.6%	488'989	623'788	-21.6%
Intercontinental	190'710	245'067	-22.2%	190'710	245'067	-22.2%
Total	679'699	868'855	-21.8%	679'699	868'855	-21.8%
Flights						
Europe	10'640	17'314	-38.5%	10'640	17'314	-38.5%
Intercontinental	1'446	1'836	-21.2%	1'446	1'836	-21.2%
Total	12'086	19'150	-36.9%	12'086	19'150	-36.9%
Available Seat km (ASK, in mill)						
Europe	703	1'043	-32.6%	703	1'043	-32.6%
Intercontinental	1'724	2'094	-17.7%	1'724	2'094	-17.7%
Total	2'427	3'136	-22.6%	2'427	3'136	-22.6%
Revenue Passenger km (RPK, in mill)						
Europe	362	480	-24.6%	362	480	-24.6%
Intercontinental	1'341	1'651	-18.7%	1'341	1'651	-18.7%
Total	1'704	2'131	-20.1%	1'704	2'131	-20.1%
Seat Load Factor (SLF %) ²⁾						
Europe	51.5%	46.1%	5.4%	51.5%	46.1%	5.4%
Intercontinental	77.8%	78.9%	-1.0%	77.8%	78.9%	-1.0%
Total	70.2%	68.0%	2.2%	70.2%	68.0%	2.2%
Freight Load Factor (%) ³⁾						
Intercontinental	80.0%	77.9%	2.1%	80.0%	77.9%	2.1%
Freight Tonnes Kilometers (FTK, in 1000)						
Intercontinental	85'117	106'301	-19.9%	85'117	106'301	-19.9%

¹⁾ Revenue Passengers

²⁾ SLF = RPK / ASK
deviation in % pts

³⁾ Including mail
deviation in % pts

Traffic Statistics February 2004 LX Scheduled Services



Swiss
International
Air Lines

	February			Cumulative		
	2004	2003		2004	2003	
Number of Passengers ¹⁾						
Europe	504'960	622'717	-18.9%	993'949	1'246'505	-20.3%
Intercontinental	173'962	212'633	-18.2%	364'672	457'700	-20.3%
Total	678'922	835'350	-18.7%	1'358'621	1'704'205	-20.3%
Flights						
Europe	10'149	16'171	-37.2%	20'789	33'485	-37.9%
Intercontinental	1'352	1'642	-17.7%	2'798	3'478	-19.6%
Total	11'501	17'813	-35.4%	23'587	36'963	-36.2%
Available Seat km (ASK, in mill)						
Europe	669	957	-30.1%	1'372	2'000	-31.4%
Intercontinental	1'603	1'875	-14.5%	3'327	3'968	-16.2%
Total	2'272	2'832	-19.8%	4'699	5'968	-21.3%
Revenue Passenger km (RPK, in mill)						
Europe	365	466	-21.7%	727	947	-23.2%
Intercontinental	1'217	1'443	-15.7%	2'558	3'094	-17.3%
Total	1'582	1'910	-17.2%	3'285	4'041	-18.7%
Seat Load Factor (SLF %) ²⁾						
Europe	54.6%	48.7%	5.9%	53.0%	47.3%	5.7%
Intercontinental	75.9%	77.0%	-1.1%	76.9%	78.0%	-1.1%
Total	69.6%	67.4%	2.2%	69.9%	67.7%	2.2%
Freight Load Factor (%) ³⁾						
Intercontinental	90.0%	86.0%	4.0%	85.0%	82.0%	3.0%
Freight Tonnes Kilometers (FTK, in 1000)						
Intercontinental	97'771	108'934	-10.2%	182'888	215'235	-15.0%

¹⁾ Revenue Passengers

²⁾ SLF = RPK / ASK
deviation in % pts

³⁾ Including mail
deviation in % pts

Traffic Statistics March 2004 LX Scheduled Services



	March			Cumulative		
	2004	2003		2004	2003	
Number of Passengers ¹⁾						
Europe	602'964	735'116	-18.0%	1'596'913	1'981'621	-19.4%
Intercontinental	198'178	230'492	-14.0%	562'850	688'192	-18.2%
Total	801'142	965'608	-17.0%	2'159'763	2'669'813	-19.1%
Flights						
Europe	10'988	17'770	-38.2%	31'777	51'255	-38.0%
Intercontinental	1'419	1'819	-22.0%	4'217	5'297	-20.4%
Total	12'407	19'589	-36.7%	35'994	56'552	-36.4%
Available Seat km (ASK, in mill)						
Europe	729	1'044	-30.2%	2'101	3'044	-31.0%
Intercontinental	1'686	2'087	-19.2%	5'012	6'056	-17.2%
Total	2'414	3'132	-22.9%	7'113	9'100	-21.8%
Revenue Passenger km (RPK, in mill)						
Europe	440	563	-22.0%	1'167	1'510	-22.7%
Intercontinental	1'367	1'578	-13.4%	3'925	4'672	-16.0%
Total	1'806	2'141	-15.7%	5'092	6'182	-17.6%
Seat Load Factor (SLF %) ²⁾						
Europe	60.3%	54.0%	6.3%	55.5%	49.6%	5.9%
Intercontinental	81.1%	75.6%	5.5%	78.3%	77.2%	1.1%
Total	74.8%	68.4%	6.4%	71.6%	67.9%	3.7%
Freight Load Factor (%) ³⁾						
Intercontinental	91.0%	87.4%	3.6%	87.0%	83.8%	3.2%
Freight Tonnes Kilometers (FTK, in 1000)						
Intercontinental	104'478	120'393	-13.2%	287'366	335'628	-14.4%

¹⁾ Revenue Passengers

²⁾ SLF = RPK / ASK
deviation in % pts

³⁾ Including mail
deviation in % pts

Traffic Statistics April 2004 LX Scheduled Services



	April			Cumulative		
	2004	2003		2004	2003	
Number of Passengers ¹⁾						
Europe	629'871	647'474	-2.7%	2'226'784	2'629'095	-15.3%
Intercontinental	189'881	209'610	-9.4%	752'731	897'802	-16.2%
Total	819'752	857'084	-4.4%	2'979'515	3'526'897	-15.5%
Flights						
Europe	10'622	14'025	-24.3%	42'399	65'280	-35.1%
Intercontinental	1'299	1'727	-24.8%	5'516	7'024	-21.5%
Total	11'921	15'752	-24.3%	47'915	72'304	-33.7%
Available Seat km (ASK, in mill)						
Europe	705	867	-18.7%	2'806	3'911	-28.3%
Intercontinental	1'561	2'010	-22.3%	6'573	8'066	-18.5%
Total	2'266	2'877	-21.2%	9'379	11'977	-21.7%
Revenue Passenger km (RPK, in mill)						
Europe	471	501	-6.0%	1'638	2'011	-18.5%
Intercontinental	1'278	1'381	-7.5%	5'203	6'054	-14.1%
Total	1'749	1'882	-7.1%	6'841	8'065	-15.2%
Seat Load Factor (SLF %) ²⁾						
Europe	66.8%	57.8%	9.0%	58.4%	51.4%	7.0%
Intercontinental	81.9%	68.7%	13.2%	79.2%	75.1%	4.1%
Total	77.2%	65.4%	11.8%	72.9%	67.3%	5.6%
Freight Load Factor (%) ³⁾						
Intercontinental	83.0%	82.6%	0.4%	86.0%	83.5%	2.5%
Freight Tonnes Kilometers (FTK, in 1000)						
Intercontinental	88'759	116'773	-24.0%	376'125	452'401	-16.9%

¹⁾ Revenue Passengers

²⁾ SLF = RPK / ASK
deviation in % pts

³⁾ Including mail
deviation in % pts

Traffic Statistics May 2004 LX Scheduled Services



	May			Cumulative		
	2004	2003		2004	2003	
Number of Passengers ¹⁾						
Europe	606'582	643'856	-5.8%	2'833'366	3'272'951	-13.4%
Intercontinental	182'270	211'550	-13.8%	935'001	1'109'352	-15.7%
Total	788'852	855'406	-7.8%	3'768'367	4'382'303	-14.0%
Flights						
Europe	10'883	14'297	-23.9%	53'282	79'577	-33.0%
Intercontinental	1'331	1'715	-22.4%	6'847	8'739	-21.7%
Total	12'214	16'012	-23.7%	60'129	88'316	-31.9%
Available Seat km (ASK, in mill)						
Europe	718	846	-15.1%	3'524	4'757	-25.9%
Intercontinental	1'607	1'936	-17.0%	8'180	10'002	-18.2%
Total	2'325	2'782	-16.4%	11'704	14'759	-20.7%
Revenue Passenger km (RPK, in mill)						
Europe	451	499	-9.6%	2'089	2'510	-16.8%
Intercontinental	1'234	1'386	-11.0%	6'437	7'440	-13.5%
Total	1'685	1'885	-10.6%	8'526	9'950	-14.3%
Seat Load Factor (SLF %) ²⁾						
Europe	62.8%	59.0%	3.8%	59.3%	52.8%	6.5%
Intercontinental	76.8%	71.6%	5.2%	78.7%	74.4%	4.3%
Total	72.5%	67.7%	4.8%	72.8%	67.4%	5.4%
Freight Load Factor (%) ³⁾						
Intercontinental	84.7%	85.5%	-0.8%	85.7%	83.9%	1.8%
Freight Tonnes Kilometers (FTK, in 1000)						
Intercontinental	95'309	110'594	-13.8%	471'434	562'995	-16.3%

¹⁾ Revenue Passengers

²⁾ SLF = RPK / ASK
deviation in % pts

³⁾ Including mail
deviation in % pts

Traffic Statistics June 2004 LX Scheduled Services



	June			Cumulative		
	2004	2003		2004	2003	
Number of Passengers ¹⁾						
Europe	610'949	700'468	-12.8%	3'444'315	3'973'419	-13.3%
Intercontinental	185'663	230'101	-19.3%	1'120'664	1'339'453	-16.3%
Total	796'612	930'569	-14.4%	4'564'979	5'312'872	-14.1%
Flights						
Europe	10'574	13'978	-24.4%	63'856	93'555	-31.7%
Intercontinental	1'282	1'686	-24.0%	8'129	10'425	-22.0%
Total	11'856	15'664	-24.3%	71'985	103'980	-30.8%
Available Seat km (ASK, in mill)						
Europe	707	828	-14.6%	4'231	5'585	-24.2%
Intercontinental	1'547	1'892	-18.2%	9'727	11'894	-18.2%
Total	2'254	2'719	-17.1%	13'958	17'479	-20.1%
Revenue Passenger km (RPK, in mill)						
Europe	462	546	-15.3%	2'551	3'056	-16.5%
Intercontinental	1'261	1'511	-16.5%	7'698	8'951	-14.0%
Total	1'724	2'057	-16.2%	10'249	12'007	-14.6%
Seat Load Factor (SLF %) ²⁾						
Europe	65.4%	66.0%	-0.6%	60.3%	54.7%	5.6%
Intercontinental	81.5%	79.9%	1.6%	79.1%	75.3%	3.8%
Total	76.5%	75.7%	0.8%	73.4%	68.7%	4.7%
Freight Load Factor (%) ³⁾						
Intercontinental	86.9%	84.5%	2.4%	85.9%	84.0%	1.9%
Freight Tonnes Kilometers (FTK, in 1000)						
Intercontinental	95'382	106'280	-10.3%	566'816	669'275	-15.3%

¹⁾ Revenue Passengers

²⁾ SLF = RPK / ASK
deviation in % pts

³⁾ Including mail
deviation in % pts

Traffic Statistics July 2004 LX Scheduled Services



	July			Cumulative		
	2004	2003		2004	2003	
Number of Passengers ¹⁾						
Europe	616'782	727'706	-15.2%	4'061'097	4'701'125	-13.6%
Intercontinental	199'166	249'520	-20.2%	1'319'830	1'588'973	-16.9%
Total	815'948	977'226	-16.5%	5'380'927	6'290'098	-14.5%
Flights						
Europe	10'889	14'286	-23.8%	74'745	107'841	-30.7%
Intercontinental	1'332	1'771	-24.8%	9'461	12'196	-22.4%
Total	12'221	16'057	-23.9%	84'206	120'037	-29.8%
Available Seat km (ASK, in mill)						
Europe	725	850	-14.7%	4'956	6'435	-23.0%
Intercontinental	1'603	2'015	-20.4%	11'330	13'909	-18.5%
Total	2'328	2'865	-18.7%	16'286	20'343	-19.9%
Revenue Passenger km (RPK, in mill)						
Europe	477	575	-16.9%	3'029	3'631	-16.6%
Intercontinental	1'350	1'633	-17.3%	9'048	10'584	-14.5%
Total	1'827	2'207	-17.2%	12'076	14'215	-15.0%
Seat Load Factor (SLF %) ²⁾						
Europe	65.9%	67.6%	-1.7%	61.1%	56.4%	4.7%
Intercontinental	84.2%	81.0%	3.2%	79.9%	76.1%	3.8%
Total	78.5%	77.1%	1.4%	74.2%	69.9%	4.3%
Estimate Freight Load Factor (%) ³⁾						
Intercontinental	85.0%	83.7%	1.3%	85.8%	83.9%	1.9%
Estimate Freight Tonnes Kilometers (FTK, in 1000)						
Intercontinental	95'352	99'370	-4.0%	662'168	768'645	-13.9%

¹⁾ Revenue Passengers

²⁾ SLF = RPK / ASK
deviation in % pts

³⁾ Including mail
deviation in % pts

Traffic Statistics August 2004 LX Scheduled Services



	August		Cumulative	
	2004	2003	2004	2003
Number of Passengers ¹⁾				
Europe	736'117		5'437'242	
Intercontinental	265'112		1'854'085	
Total	1'001'229		7'291'327	
Flights				
Europe	13'864		121'705	
Intercontinental	1'803		13'999	
Total	15'667		135'704	
Available Seat km (ASK, in mill)				
Europe	847		7'282	
Intercontinental	2'034		15'943	
Total	2'881		23'224	
Revenue Passenger km (RPK, in mill)				
Europe	592		4'223	
Intercontinental	1'725		12'309	
Total	2'317		16'531	
Seat Load Factor (SLF %) ²⁾				
Europe	69.9%		58.0%	
Intercontinental	84.8%		77.2%	
Total	80.4%		71.2%	
Freight Load Factor (%) ³⁾				
Intercontinental	79.7%		83.4%	
Freight Tonnes Kilometers (FTK, in 1000)				
Intercontinental	97'449		866'094	

¹⁾ Revenue Passengers

²⁾ SLF = RPK / ASK
deviation in % pts

³⁾ Including mail
deviation in % pts

Traffic Statistics September 2004 LX Scheduled Services



	September		Cumulative	
	2004	2003	2004	2003
Number of Passengers ¹⁾				
Europe	711'750		6'148'992	
Intercontinental	228'879		2'082'964	
Total	940'629		8'231'956	
Flights				
Europe	13'288		134'993	
Intercontinental	1'676		15'675	
Total	14'964		150'668	
Available Seat km (ASK, in mill)				
Europe	811		8'092	
Intercontinental	1'878		17'821	
Total	2'689		25'913	
Revenue Passenger km (RPK, in mill)				
Europe	553		4'776	
Intercontinental	1'465		13'774	
Total	2'018		18'549	
Seat Load Factor (SLF %) ²⁾				
Europe	68.2%		59.0%	
Intercontinental	78.0%		77.3%	
Total	75.0%		71.6%	
Freight Load Factor (%) ³⁾				
Intercontinental	85.2%		83.6%	
Freight Tonnes Kilometers (FTK, in 1000)				
Intercontinental	111'664		977'758	

¹⁾ Revenue Passengers

²⁾ SLF = RPK / ASK
deviation in % pts

³⁾ Including mail
deviation in % pts

Traffic Statistics October 2004 LX Scheduled Services



	October		Cumulative	
	2004	2003	2004	2003
Number of Passengers ¹⁾				
Europe		727'741		6'876'733
Intercontinental		238'261		2'321'225
Total		966'002		9'197'958
Flights				
Europe		12'801		147'794
Intercontinental		1'707		17'382
Total		14'508		165'176
Available Seat km (ASK, in mill)				
Europe		807		8'899
Intercontinental		1'960		19'781
Total		2'767		28'680
Revenue Passenger km (RPK, in mill)				
Europe		557		5'333
Intercontinental		1'601		15'375
Total		2'159		20'708
Seat Load Factor (SLF %) ²⁾				
Europe		69.0%		59.9%
Intercontinental		81.7%		77.7%
Total		78.0%		72.2%
Freight Load Factor (%) ³⁾				
Intercontinental		85.5%		83.8%
Freight Tonnes Kilometers (FTK, in 1000)				
Intercontinental		104'207		1'081'965

¹⁾ Revenue Passengers

²⁾ SLF = RPK / ASK
deviation in % pts

³⁾ Including mail
deviation in % pts

Traffic Statistics November 2004 LX Scheduled Services



	November		Cumulative	
	2004	2003	2004	2003
Number of Passengers ¹⁾				
Europe	533'209		7'409'942	
Intercontinental	186'914		2'508'139	
Total	720'123		9'918'081	
Flights				
Europe	10'510		158'304	
Intercontinental	1'417		18'799	
Total	11'927		177'103	
Available Seat km (ASK, in mill)				
Europe	691		9'590	
Intercontinental	1'691		21'471	
Total	2'382		31'062	
Revenue Passenger km (RPK, in mill)				
Europe	392		5'725	
Intercontinental	1'319		16'694	
Total	1'711		22'419	
Seat Load Factor (SLF %) ²⁾				
Europe	56.8%		59.7%	
Intercontinental	78.0%		77.8%	
Total	71.8%		72.2%	
Freight Load Factor (%) ³⁾				
Intercontinental	87.7%		84.2%	
Freight Tonnes Kilometers (FTK, in 1000)				
Intercontinental	98'420		1'180'385	

¹⁾ Revenue Passengers

²⁾ SLF = RPK / ASK
deviation in % pts

³⁾ Including mail
deviation in % pts

Traffic Statistics December 2004 LX Scheduled Services



	December		Cumulative	
	2004	2003	2004	2003
Number of Passengers ¹⁾				
Europe	542'537		7'952'479	
Intercontinental	200'097		2'708'236	
Total	742'634		10'660'715	
Flights				
Europe	10'535		168'839	
Intercontinental	1'448		20'247	
Total	11'983		189'086	
Available Seat km (ASK, in mill)				
Europe	695		10'285	
Intercontinental	1'722		23'193	
Total	2'417		33'478	
Revenue Passenger km (RPK, in mill)				
Europe	403		6'128	
Intercontinental	1'401		18'095	
Total	1'804		24'223	
Seat Load Factor (SLF %) ²⁾				
Europe	58.1%		59.6%	
Intercontinental	81.3%		78.0%	
Total	74.6%		72.4%	
Freight Load Factor (%) ³⁾				
Intercontinental	86.7%		84.4%	
Freight Tonnes Kilometers (FTK, in 1000)				
Intercontinental	94'363		1'274'748	

¹⁾ Revenue Passengers

²⁾ SLF = RPK / ASK
deviation in % pts

³⁾ Including mail
deviation in % pts