

# SWISS traffic results

August 2004



## SWISS load factors for August remain at strong levels

SWISS recorded a systemwide seat load factor on its scheduled services of 79.4% for August 2004. The result was the highest for the past twelve months, and was only bettered by the 80.4% posted for the same month last year. SWISS's August 2004 production was 19.2% below its prior-year equivalent in seat-kilometre terms. Revenue passenger-kilometres sold fell by a slightly higher 20.2%, leading to the small year-on-year load factor decline. Intercontinental services saw their seat load factor rise 0.7 percentage points to 85.5%, the highest it has been for two years. Seat load factor on European services was 3.9 percentage points down on its August 2003 level at 66.0%. SWISS carried 819 215 passengers on its scheduled services in August 2004. A meaningful year-on-year comparison of absolute passenger figures is impossible because of the decrease in production resulting from adjustments to the route network.

Seat load factor for August on **European services** stood at 66.0%, a 3.9-percentage-point decline on the prior-year period. While capacity in available seat-kilometres was 14.2% below its prior-year level, revenue passenger-kilometres sold fell by 19.0%. With the resized SWISS network, the higher proportion of long-haul passengers originating or finishing their journey in Switzerland has had an adverse impact on European seat load factors, especially in the summer months: with intercontinental services showing very high loadings, fewer passengers with connections to and from the SWISS short-haul network could be carried. The decline in European seat load factor was also due to capacity increases effected on selected routes and to intensified competition from the no-frills carriers. The August seat load factor was further depressed by the absence this year of scheduled services to and from the Balkans, which contributed high seat load factors in summer 2003.

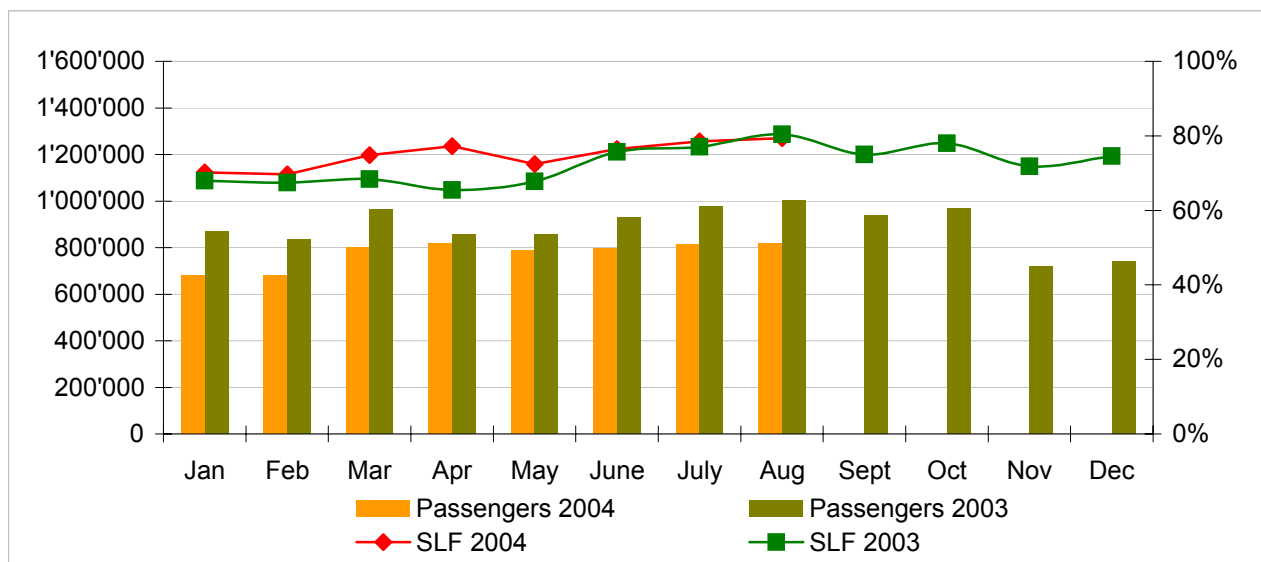
August seat load factor for SWISS's **intercontinental services** totalled 85.5%, which compares to 84.8% for August last year. The result is the highest monthly intercontinental seat load factor for the past two years, and the second-best ever recorded by SWISS. Available seat-kilometre capacity was 21.2% down on August 2003, while revenue passenger-kilometres sold declined 20.6% over the same period. The highest seat load factor increase was seen on services to and from Africa, which rose 3.8 points to 84.2%. Far East services posted a seat load factor of 82.5%, up 1.5 points on the prior year. Seat load factor on Middle East services was almost unchanged at 83.5% (up 0.1 points), while the North Atlantic seat load factor of 88.9% (down 0.1 points) also remained virtually at its prior-year level. Seat load factor on South American services stood at 82.8%, a 3.9-point decline on its prior-year equivalent.

## Traffic Statistics January-December 2004 LX Scheduled Services



	Passengers Europe	Passengers Intercontinental	Passengers Total	SLF Europe	SLF Intercontinental	SLF Total
Jan	488'989	190'710	679'699	51.5%	77.8%	70.2%
Feb	504'960	173'962	678'922	54.6%	75.9%	69.6%
Mar	602'964	198'178	801'142	60.3%	81.1%	74.8%
Apr	629'871	189'881	819'752	66.8%	81.9%	77.2%
May	606'582	182'270	788'852	62.8%	76.8%	72.5%
Jun	610'949	185'663	796'612	65.4%	81.5%	76.5%
Jul	616'782	199'166	815'948	65.9%	84.2%	78.5%
Aug	611'958	207'257	819'215	66.0%	85.5%	79.4%
Sep						
Oct						
Nov						
Dec						

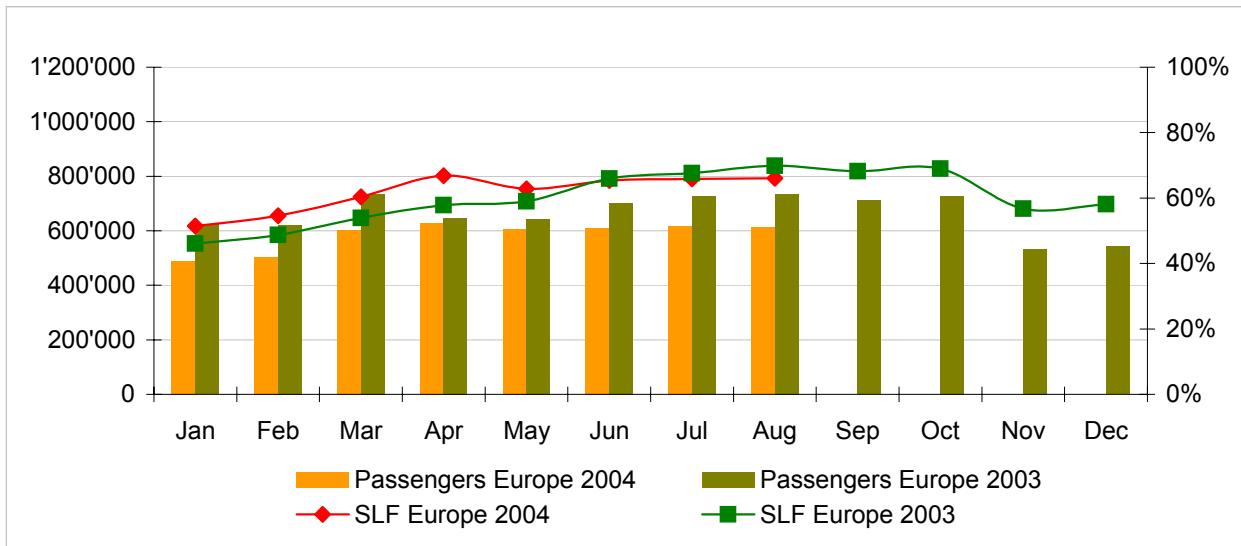
### Comparison Passengers and Seat Load Factor (SLF %) versus prior year



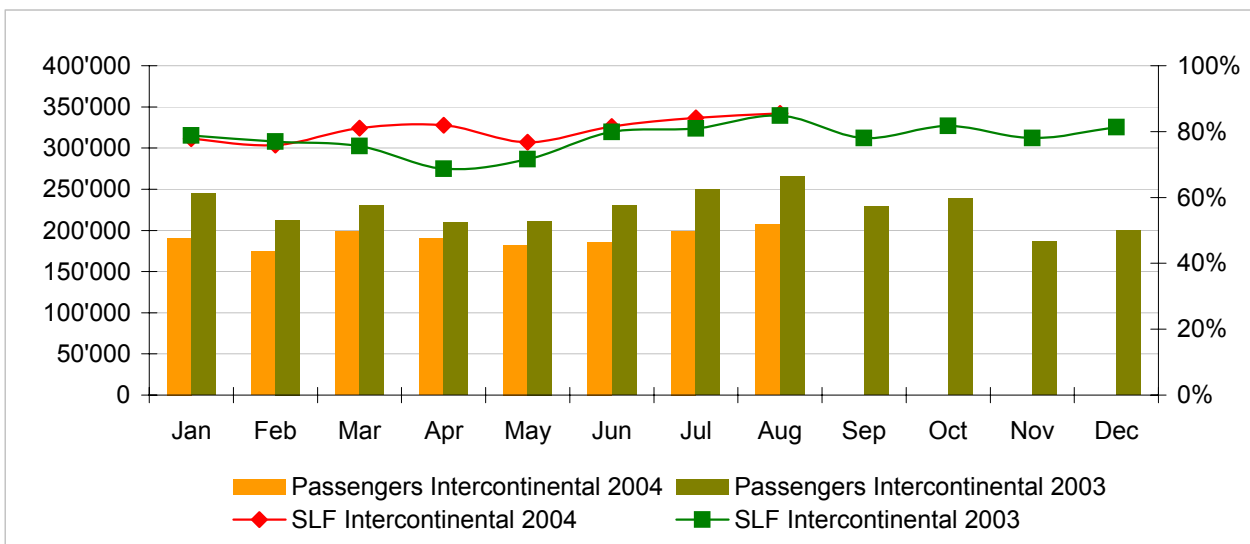
#### Next updates:

- September 04 figures    October 11th, 2004
- October 04 figures      November 10th, 2004
- November 04 figures    December 10th, 2004

**Passengers and Seat Load Factor (SLF %) European Routes**  
Comparison versus prior year



**Passengers and Seat Load Factor (SLF %) Intercontinental Routes**  
Comparison versus prior year



## Traffic Statistics January 2004 LX Scheduled Services



	January			Cumulative		
	2004	2003		2004	2003	
<b>Number of Passengers <sup>1)</sup></b>						
Europe	488'989	623'788	-21.6%	488'989	623'788	-21.6%
Intercontinental	190'710	245'067	-22.2%	190'710	245'067	-22.2%
Total	679'699	868'855	-21.8%	679'699	868'855	-21.8%
<b>Flights</b>						
Europe	10'640	17'314	-38.5%	10'640	17'314	-38.5%
Intercontinental	1'446	1'836	-21.2%	1'446	1'836	-21.2%
Total	12'086	19'150	-36.9%	12'086	19'150	-36.9%
<b>Available Seat km (ASK, in mill)</b>						
Europe	703	1'043	-32.6%	703	1'043	-32.6%
Intercontinental	1'724	2'094	-17.7%	1'724	2'094	-17.7%
Total	2'427	3'136	-22.6%	2'427	3'136	-22.6%
<b>Revenue Passenger km (RPK, in mill)</b>						
Europe	362	480	-24.6%	362	480	-24.6%
Intercontinental	1'341	1'651	-18.7%	1'341	1'651	-18.7%
Total	1'704	2'131	-20.1%	1'704	2'131	-20.1%
<b>Seat Load Factor (SLF %) <sup>2)</sup></b>						
Europe	51.5%	46.1%	5.4%	51.5%	46.1%	5.4%
Intercontinental	77.8%	78.9%	-1.0%	77.8%	78.9%	-1.0%
Total	70.2%	68.0%	2.2%	70.2%	68.0%	2.2%
<b>Freight Load Factor (%) <sup>3)</sup></b>						
Intercontinental	80.0%	77.9%	2.1%	80.0%	77.9%	2.1%
<b>Freight Tonnes Kilometers (FTK, in 1000)</b>						
Intercontinental	85'117	106'301	-19.9%	85'117	106'301	-19.9%

<sup>1)</sup> Revenue Passengers

<sup>2)</sup> SLF = RPK / ASK  
deviation in % pts

<sup>3)</sup> Including mail  
deviation in % pts

## Traffic Statistics February 2004 LX Scheduled Services



Swiss  
International  
Air Lines

	February			Cumulative		
	2004	2003		2004	2003	
<b>Number of Passengers <sup>1)</sup></b>						
Europe	504'960	622'717	-18.9%	993'949	1'246'505	-20.3%
Intercontinental	173'962	212'633	-18.2%	364'672	457'700	-20.3%
Total	678'922	835'350	-18.7%	1'358'621	1'704'205	-20.3%
<b>Flights</b>						
Europe	10'149	16'171	-37.2%	20'789	33'485	-37.9%
Intercontinental	1'352	1'642	-17.7%	2'798	3'478	-19.6%
Total	11'501	17'813	-35.4%	23'587	36'963	-36.2%
<b>Available Seat km (ASK, in mill)</b>						
Europe	669	957	-30.1%	1'372	2'000	-31.4%
Intercontinental	1'603	1'875	-14.5%	3'327	3'968	-16.2%
Total	2'272	2'832	-19.8%	4'699	5'968	-21.3%
<b>Revenue Passenger km (RPK, in mill)</b>						
Europe	365	466	-21.7%	727	947	-23.2%
Intercontinental	1'217	1'443	-15.7%	2'558	3'094	-17.3%
Total	1'582	1'910	-17.2%	3'285	4'041	-18.7%
<b>Seat Load Factor (SLF %) <sup>2)</sup></b>						
Europe	54.6%	48.7%	5.9%	53.0%	47.3%	5.7%
Intercontinental	75.9%	77.0%	-1.1%	76.9%	78.0%	-1.1%
Total	69.6%	67.4%	2.2%	69.9%	67.7%	2.2%
<b>Freight Load Factor (%) <sup>3)</sup></b>						
Intercontinental	90.0%	86.0%	4.0%	85.0%	82.0%	3.0%
<b>Freight Tonnes Kilometers (FTK, in 1000)</b>						
Intercontinental	97'771	108'934	-10.2%	182'888	215'235	-15.0%

<sup>1)</sup> Revenue Passengers

<sup>2)</sup> SLF = RPK / ASK  
deviation in % pts

<sup>3)</sup> Including mail  
deviation in % pts

## Traffic Statistics March 2004 LX Scheduled Services



	March			Cumulative		
	2004	2003		2004	2003	
<b>Number of Passengers <sup>1)</sup></b>						
Europe	602'964	735'116	-18.0%	1'596'913	1'981'621	-19.4%
Intercontinental	198'178	230'492	-14.0%	562'850	688'192	-18.2%
Total	801'142	965'608	-17.0%	2'159'763	2'669'813	-19.1%
<b>Flights</b>						
Europe	10'988	17'770	-38.2%	31'777	51'255	-38.0%
Intercontinental	1'419	1'819	-22.0%	4'217	5'297	-20.4%
Total	12'407	19'589	-36.7%	35'994	56'552	-36.4%
<b>Available Seat km (ASK, in mill)</b>						
Europe	729	1'044	-30.2%	2'101	3'044	-31.0%
Intercontinental	1'686	2'087	-19.2%	5'012	6'056	-17.2%
Total	2'414	3'132	-22.9%	7'113	9'100	-21.8%
<b>Revenue Passenger km (RPK, in mill)</b>						
Europe	440	563	-22.0%	1'167	1'510	-22.7%
Intercontinental	1'367	1'578	-13.4%	3'925	4'672	-16.0%
Total	1'806	2'141	-15.7%	5'092	6'182	-17.6%
<b>Seat Load Factor (SLF %) <sup>2)</sup></b>						
Europe	60.3%	54.0%	6.3%	55.5%	49.6%	5.9%
Intercontinental	81.1%	75.6%	5.5%	78.3%	77.2%	1.1%
Total	74.8%	68.4%	6.4%	71.6%	67.9%	3.7%
<b>Freight Load Factor (%) <sup>3)</sup></b>						
Intercontinental	91.0%	87.4%	3.6%	87.0%	83.8%	3.2%
<b>Freight Tonnes Kilometers (FTK, in 1000)</b>						
Intercontinental	104'478	120'393	-13.2%	287'366	335'628	-14.4%

<sup>1)</sup> Revenue Passengers

<sup>2)</sup> SLF = RPK / ASK  
deviation in % pts

<sup>3)</sup> Including mail  
deviation in % pts

## Traffic Statistics April 2004 LX Scheduled Services



	April			Cumulative		
	2004	2003		2004	2003	
<b>Number of Passengers <sup>1)</sup></b>						
Europe	629'871	647'474	-2.7%	2'226'784	2'629'095	-15.3%
Intercontinental	189'881	209'610	-9.4%	752'731	897'802	-16.2%
Total	819'752	857'084	-4.4%	2'979'515	3'526'897	-15.5%
<b>Flights</b>						
Europe	10'622	14'025	-24.3%	42'399	65'280	-35.1%
Intercontinental	1'299	1'727	-24.8%	5'516	7'024	-21.5%
Total	11'921	15'752	-24.3%	47'915	72'304	-33.7%
<b>Available Seat km (ASK, in mill)</b>						
Europe	705	867	-18.7%	2'806	3'911	-28.3%
Intercontinental	1'561	2'010	-22.3%	6'573	8'066	-18.5%
Total	2'266	2'877	-21.2%	9'379	11'977	-21.7%
<b>Revenue Passenger km (RPK, in mill)</b>						
Europe	471	501	-6.0%	1'638	2'011	-18.5%
Intercontinental	1'278	1'381	-7.5%	5'203	6'054	-14.1%
Total	1'749	1'882	-7.1%	6'841	8'065	-15.2%
<b>Seat Load Factor (SLF %) <sup>2)</sup></b>						
Europe	66.8%	57.8%	9.0%	58.4%	51.4%	7.0%
Intercontinental	81.9%	68.7%	13.2%	79.2%	75.1%	4.1%
Total	77.2%	65.4%	11.8%	72.9%	67.3%	5.6%
<b>Freight Load Factor (%) <sup>3)</sup></b>						
Intercontinental	83.0%	82.6%	0.4%	86.0%	83.5%	2.5%
<b>Freight Tonnes Kilometers (FTK, in 1000)</b>						
Intercontinental	88'759	116'773	-24.0%	376'125	452'401	-16.9%

<sup>1)</sup> Revenue Passengers

<sup>2)</sup> SLF = RPK / ASK  
deviation in % pts

<sup>3)</sup> Including mail  
deviation in % pts

## Traffic Statistics May 2004 LX Scheduled Services



	May			Cumulative		
	2004	2003		2004	2003	
<b>Number of Passengers <sup>1)</sup></b>						
Europe	606'582	643'856	-5.8%	2'833'366	3'272'951	-13.4%
Intercontinental	182'270	211'550	-13.8%	935'001	1'109'352	-15.7%
Total	788'852	855'406	-7.8%	3'768'367	4'382'303	-14.0%
<b>Flights</b>						
Europe	10'883	14'297	-23.9%	53'282	79'577	-33.0%
Intercontinental	1'331	1'715	-22.4%	6'847	8'739	-21.7%
Total	12'214	16'012	-23.7%	60'129	88'316	-31.9%
<b>Available Seat km (ASK, in mill)</b>						
Europe	718	846	-15.1%	3'524	4'757	-25.9%
Intercontinental	1'607	1'936	-17.0%	8'180	10'002	-18.2%
Total	2'325	2'782	-16.4%	11'704	14'759	-20.7%
<b>Revenue Passenger km (RPK, in mill)</b>						
Europe	451	499	-9.6%	2'089	2'510	-16.8%
Intercontinental	1'234	1'386	-11.0%	6'437	7'440	-13.5%
Total	1'685	1'885	-10.6%	8'526	9'950	-14.3%
<b>Seat Load Factor (SLF %) <sup>2)</sup></b>						
Europe	62.8%	59.0%	3.8%	59.3%	52.8%	6.5%
Intercontinental	76.8%	71.6%	5.2%	78.7%	74.4%	4.3%
Total	72.5%	67.7%	4.8%	72.8%	67.4%	5.4%
<b>Freight Load Factor (%) <sup>3)</sup></b>						
Intercontinental	84.7%	85.5%	-0.8%	85.7%	83.9%	1.8%
<b>Freight Tonnes Kilometers (FTK, in 1000)</b>						
Intercontinental	95'309	110'594	-13.8%	471'434	562'995	-16.3%

<sup>1)</sup> Revenue Passengers

<sup>2)</sup> SLF = RPK / ASK  
deviation in % pts

<sup>3)</sup> Including mail  
deviation in % pts

## Traffic Statistics June 2004 LX Scheduled Services



	June			Cumulative		
	2004	2003		2004	2003	
<b>Number of Passengers <sup>1)</sup></b>						
Europe	610'949	700'468	-12.8%	3'444'315	3'973'419	-13.3%
Intercontinental	185'663	230'101	-19.3%	1'120'664	1'339'453	-16.3%
Total	796'612	930'569	-14.4%	4'564'979	5'312'872	-14.1%
<b>Flights</b>						
Europe	10'574	13'978	-24.4%	63'856	93'555	-31.7%
Intercontinental	1'282	1'686	-24.0%	8'129	10'425	-22.0%
Total	11'856	15'664	-24.3%	71'985	103'980	-30.8%
<b>Available Seat km (ASK, in mill)</b>						
Europe	707	828	-14.6%	4'231	5'585	-24.2%
Intercontinental	1'547	1'892	-18.2%	9'727	11'894	-18.2%
Total	2'254	2'719	-17.1%	13'958	17'479	-20.1%
<b>Revenue Passenger km (RPK, in mill)</b>						
Europe	462	546	-15.3%	2'551	3'056	-16.5%
Intercontinental	1'261	1'511	-16.5%	7'698	8'951	-14.0%
Total	1'724	2'057	-16.2%	10'249	12'007	-14.6%
<b>Seat Load Factor (SLF %) <sup>2)</sup></b>						
Europe	65.4%	66.0%	-0.6%	60.3%	54.7%	5.6%
Intercontinental	81.5%	79.9%	1.6%	79.1%	75.3%	3.8%
Total	76.5%	75.7%	0.8%	73.4%	68.7%	4.7%
<b>Freight Load Factor (%) <sup>3)</sup></b>						
Intercontinental	86.9%	84.5%	2.4%	85.9%	84.0%	1.9%
<b>Freight Tonnes Kilometers (FTK, in 1000)</b>						
Intercontinental	95'382	106'280	-10.3%	566'816	669'275	-15.3%

<sup>1)</sup> Revenue Passengers

<sup>2)</sup> SLF = RPK / ASK  
deviation in % pts

<sup>3)</sup> Including mail  
deviation in % pts

## Traffic Statistics July 2004 LX Scheduled Services



	July			Cumulative		
	2004	2003		2004	2003	
<b>Number of Passengers <sup>1)</sup></b>						
Europe	616'782	727'706	-15.2%	4'061'097	4'701'125	-13.6%
Intercontinental	199'166	249'520	-20.2%	1'319'830	1'588'973	-16.9%
Total	815'948	977'226	-16.5%	5'380'927	6'290'098	-14.5%
<b>Flights</b>						
Europe	10'889	14'286	-23.8%	74'745	107'841	-30.7%
Intercontinental	1'332	1'771	-24.8%	9'461	12'196	-22.4%
Total	12'221	16'057	-23.9%	84'206	120'037	-29.8%
<b>Available Seat km (ASK, in mill)</b>						
Europe	725	850	-14.7%	4'956	6'435	-23.0%
Intercontinental	1'603	2'015	-20.4%	11'330	13'909	-18.5%
Total	2'328	2'865	-18.7%	16'286	20'343	-19.9%
<b>Revenue Passenger km (RPK, in mill)</b>						
Europe	477	575	-16.9%	3'029	3'631	-16.6%
Intercontinental	1'350	1'633	-17.3%	9'048	10'584	-14.5%
Total	1'827	2'207	-17.2%	12'076	14'215	-15.0%
<b>Seat Load Factor (SLF %) <sup>2)</sup></b>						
Europe	65.9%	67.6%	-1.7%	61.1%	56.4%	4.7%
Intercontinental	84.2%	81.0%	3.2%	79.9%	76.1%	3.8%
Total	78.5%	77.1%	1.4%	74.2%	69.9%	4.3%
<b>Freight Load Factor (%) <sup>3)</sup></b>						
Intercontinental	86.0%	83.7%	2.3%	85.9%	83.9%	2.0%
<b>Freight Tonnes Kilometers (FTK, in 1000)</b>						
Intercontinental	94'999	99'370	-4.4%	661'815	768'645	-13.9%

<sup>1)</sup> Revenue Passengers

<sup>2)</sup> SLF = RPK / ASK  
deviation in % pts

<sup>3)</sup> Including mail  
deviation in % pts

## Traffic Statistics August 2004 LX Scheduled Services



	August			Cumulative		
	2004	2003		2004	2003	
<b>Number of Passengers <sup>1)</sup></b>						
Europe	611'958	736'117	-16.9%	4'673'055	5'437'242	-14.1%
Intercontinental	207'257	265'112	-21.8%	1'527'087	1'854'085	-17.6%
Total	819'215	1'001'229	-18.2%	6'200'142	7'291'327	-15.0%
<b>Flights</b>						
Europe	10'646	13'864	-23.2%	85'391	121'705	-29.8%
Intercontinental	1'333	1'803	-26.1%	10'794	13'999	-22.9%
Total	11'979	15'667	-23.5%	96'185	135'704	-29.1%
<b>Available Seat km (ASK, in mill)</b>						
Europe	727	847	-14.2%	5'682	7'282	-22.0%
Intercontinental	1'602	2'034	-21.2%	12'932	15'943	-18.9%
Total	2'329	2'881	-19.2%	18'615	23'224	-19.8%
<b>Revenue Passenger km (RPK, in mill)</b>						
Europe	480	592	-19.0%	3'508	4'223	-16.9%
Intercontinental	1'370	1'725	-20.6%	10'418	12'309	-15.4%
Total	1'850	2'317	-20.2%	13'926	16'531	-15.8%
<b>Seat Load Factor (SLF %) <sup>2)</sup></b>						
Europe	66.0%	69.9%	-3.9%	61.7%	58.0%	3.7%
Intercontinental	85.5%	84.8%	0.7%	80.6%	77.2%	3.4%
Total	79.4%	80.4%	-1.0%	74.8%	71.2%	3.6%
<b>Estimate Freight Load Factor (%) <sup>3)</sup></b>						
Intercontinental	85.0%	79.7%	5.3%	85.8%	83.4%	2.4%
<b>Estimate Freight Tonnes Kilometers (FTK, in 1000)</b>						
Intercontinental	91'137	97'449	-6.5%	752'952	866'094	-13.1%

<sup>1)</sup> Revenue Passengers

<sup>2)</sup> SLF = RPK / ASK  
deviation in % pts

<sup>3)</sup> Including mail  
deviation in % pts

## Traffic Statistics September 2004 LX Scheduled Services



	September		Cumulative	
	2004	2003	2004	2003
<b>Number of Passengers <sup>1)</sup></b>				
Europe	711'750		6'148'992	
Intercontinental	228'879		2'082'964	
<b>Total</b>	<b>940'629</b>		<b>8'231'956</b>	
<b>Flights</b>				
Europe	13'288		134'993	
Intercontinental	1'676		15'675	
<b>Total</b>	<b>14'964</b>		<b>150'668</b>	
<b>Available Seat km (ASK, in mill)</b>				
Europe	811		8'092	
Intercontinental	1'878		17'821	
<b>Total</b>	<b>2'689</b>		<b>25'913</b>	
<b>Revenue Passenger km (RPK, in mill)</b>				
Europe	553		4'776	
Intercontinental	1'465		13'774	
<b>Total</b>	<b>2'018</b>		<b>18'549</b>	
<b>Seat Load Factor (SLF %) <sup>2)</sup></b>				
Europe	68.2%		59.0%	
Intercontinental	78.0%		77.3%	
<b>Total</b>	<b>75.0%</b>		<b>71.6%</b>	
<b>Freight Load Factor (%) <sup>3)</sup></b>				
Intercontinental	85.2%		83.6%	
<b>Freight Tonnes Kilometers (FTK, in 1000)</b>				
Intercontinental	111'664		977'758	

<sup>1)</sup> Revenue Passengers

<sup>2)</sup> SLF = RPK / ASK  
deviation in % pts

<sup>3)</sup> Including mail  
deviation in % pts

## Traffic Statistics October 2004 LX Scheduled Services



	October		Cumulative	
	2004	2003	2004	2003
<b>Number of Passengers <sup>1)</sup></b>				
Europe	727'741		6'876'733	
Intercontinental	238'261		2'321'225	
Total	966'002		9'197'958	
<b>Flights</b>				
Europe	12'801		147'794	
Intercontinental	1'707		17'382	
Total	14'508		165'176	
<b>Available Seat km (ASK, in mill)</b>				
Europe	807		8'899	
Intercontinental	1'960		19'781	
Total	2'767		28'680	
<b>Revenue Passenger km (RPK, in mill)</b>				
Europe	557		5'333	
Intercontinental	1'601		15'375	
Total	2'159		20'708	
<b>Seat Load Factor (SLF %) <sup>2)</sup></b>				
Europe	69.0%		59.9%	
Intercontinental	81.7%		77.7%	
Total	78.0%		72.2%	
<b>Freight Load Factor (%) <sup>3)</sup></b>				
Intercontinental	85.5%		83.8%	
<b>Freight Tonnes Kilometers (FTK, in 1000)</b>				
Intercontinental	104'207		1'081'965	

<sup>1)</sup> Revenue Passengers

<sup>2)</sup> SLF = RPK / ASK  
deviation in % pts

<sup>3)</sup> Including mail  
deviation in % pts

## Traffic Statistics November 2004 LX Scheduled Services



	November		Cumulative	
	2004	2003	2004	2003
<b>Number of Passengers <sup>1)</sup></b>				
Europe	533'209		7'409'942	
Intercontinental	186'914		2'508'139	
Total	720'123		9'918'081	
<b>Flights</b>				
Europe	10'510		158'304	
Intercontinental	1'417		18'799	
Total	11'927		177'103	
<b>Available Seat km (ASK, in mill)</b>				
Europe	691		9'590	
Intercontinental	1'691		21'471	
Total	2'382		31'062	
<b>Revenue Passenger km (RPK, in mill)</b>				
Europe	392		5'725	
Intercontinental	1'319		16'694	
Total	1'711		22'419	
<b>Seat Load Factor (SLF %) <sup>2)</sup></b>				
Europe	56.8%		59.7%	
Intercontinental	78.0%		77.8%	
Total	71.8%		72.2%	
<b>Freight Load Factor (%) <sup>3)</sup></b>				
Intercontinental	87.7%		84.2%	
<b>Freight Tonnes Kilometers (FTK, in 1000)</b>				
Intercontinental	98'420		1'180'385	

<sup>1)</sup> Revenue Passengers

<sup>2)</sup> SLF = RPK / ASK  
deviation in % pts

<sup>3)</sup> Including mail  
deviation in % pts

## Traffic Statistics December 2004 LX Scheduled Services



	December		Cumulative	
	2004	2003	2004	2003
<b>Number of Passengers <sup>1)</sup></b>				
Europe	542'537		7'952'479	
Intercontinental	200'097		2'708'236	
Total	742'634		10'660'715	
<b>Flights</b>				
Europe	10'535		168'839	
Intercontinental	1'448		20'247	
Total	11'983		189'086	
<b>Available Seat km (ASK, in mill)</b>				
Europe	695		10'285	
Intercontinental	1'722		23'193	
Total	2'417		33'478	
<b>Revenue Passenger km (RPK, in mill)</b>				
Europe	403		6'128	
Intercontinental	1'401		18'095	
Total	1'804		24'223	
<b>Seat Load Factor (SLF %) <sup>2)</sup></b>				
Europe	58.1%		59.6%	
Intercontinental	81.3%		78.0%	
Total	74.6%		72.4%	
<b>Freight Load Factor (%) <sup>3)</sup></b>				
Intercontinental	86.7%		84.4%	
<b>Freight Tonnes Kilometers (FTK, in 1000)</b>				
Intercontinental	94'363		1'274'748	

<sup>1)</sup> Revenue Passengers

<sup>2)</sup> SLF = RPK / ASK  
deviation in % pts

<sup>3)</sup> Including mail  
deviation in % pts