

SWISS traffic results

January to September 2004



Substantial improvement in load factors for the first nine months

SWISS's average seat load factor for the first nine months of 2004 amounted to 75.2%, a 3.6-percentage-point improvement on the same period last year. Seat load factor for intercontinental services rose 3.6 percentage points to 80.9%, and seat load factor for European services saw a 3.1-percentage-point increase to 62.1%. SWISS carried a total of seven million passengers in the first nine months of the year. Seat load factor for the month of September stood at 78.0%, up 3.0 percentage points on its prior-year equivalent. Cargo load factor for the first nine months of 2004 amounted to 85.8%, a 2.2-percentage-point improvement on the prior-year period.

The modifications effected to the SWISS route network under the company's corporate restructuring had a positive impact on the load factors recorded for the first nine months of 2004. SWISS posted a seat load factor of 75.2% for the period, a 3.6-percentage-point increase on the equivalent result last year. SWISS carried a total of seven million passengers on its scheduled services in the first nine months of the year. A year-on-year comparison of absolute passenger figures is not meaningful in view of the decrease in production resulting from adjustments to the route network. SWISS offered 19.5% fewer available seat-kilometres in January to September 2004 than it had for the prior-year period. The associated decline in revenue passenger-kilometres for the same comparative periods was stemmed to 15.5%, however, and load factor improved accordingly. SWISS's seat load factor for September 2004 amounted to 78.0%, an improvement of 3.0 percentage points on the same month last year.

Seat load factor on **European services** for the first nine months of 2004 stood at 62.1%, some 3.1 percentage points up on the prior-year period. While available seat-kilometre capacity was 21.0% below its 2003 levels, the associated fall in revenue passenger-kilometres flown was limited to 16.8%. SWISS did, however, see a decline in its European load factors over the summer months, the latest of which was a 2.9-point reduction in September to 65.3%. The decline can be ascribed to a number of factors. For one, the modifications to the SWISS route network have increased the proportion of long-haul passengers with Switzerland as their origin or destination. This has had an adverse impact on European seat load factors, especially during the summer months, as the well-patronised long-haul services have been able to carry fewer passengers transferring to or from European feeder flights. European seat load factors also suffered through SWISS's own increases in capacity on selected routes. And they were further depressed by the growing competition from no-frills carriers and by the non-operation in 2004 of the scheduled services to and from the Balkans, which had generated high seat load factors in the summer of the previous year.

SWISS's seat load factor for its **intercontinental services** amounted to 80.9% for the first nine months of the year, a 3.6-percentage-point improvement on the same period in 2003. Available-seat-kilometre capacity was 18.8% down on its prior-year level; but revenue passenger-kilometres flown over the period were only a 15.0% decline on their 2003 equivalent. The load factors for SWISS's intercontinental services have been consistently above their prior-year levels since March 2004. And the 83.8% seat load factor recorded for September was a substantial 5.8 percentage points up on the same month last year. North Atlantic services posted a September seat load factor of 86.6%, up 6.0 points on September 2003, while the 83.0% recorded for Far East services was a 4.8-point year-on-year improvement. The 75.2% seat load factor reported for flights to and from the Middle East was a 7.1-point increase on its prior-year equivalent; and the 83.3% recorded for services to Africa was a sizeable 10.1-point improvement. The only decline was seen in seat load factors for services to South America: these slipped 2.6 percentage points, but still remained high at 84.4%.

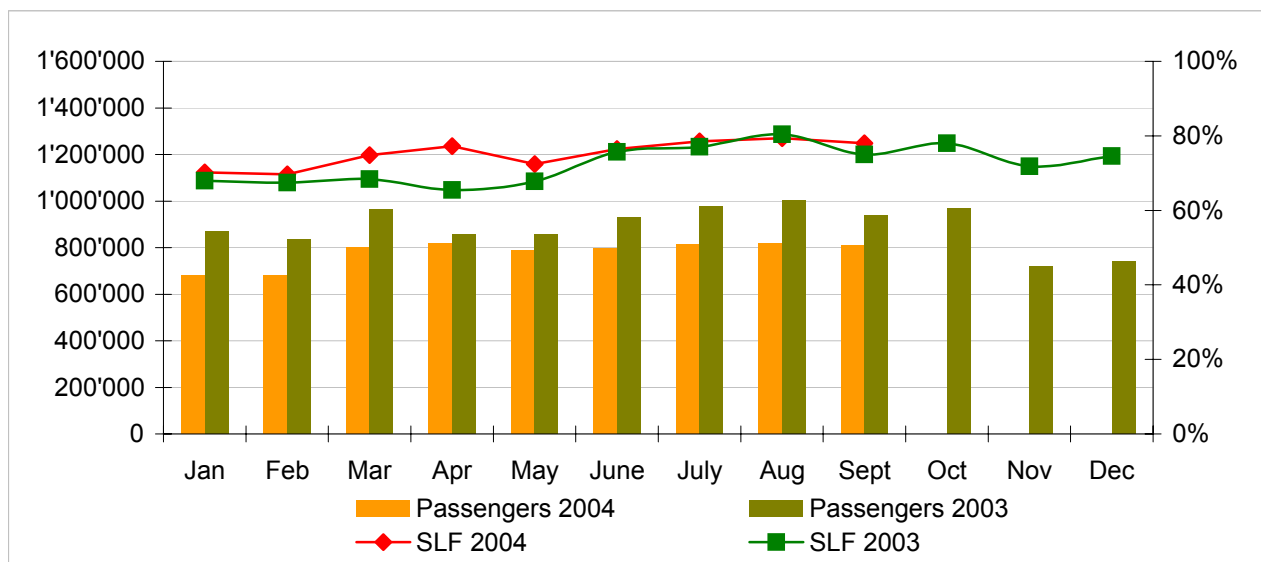
The airfreight operations of SWISS's **Swiss WorldCargo** business unit also reported encouragingly positive trends in the first nine months of 2004. Cargo load factor (by volume) amounted to 85.8%, a 2.2-percentage-point improvement on the same period last year. The result is attributable in no small part to Swiss WorldCargo's consistent strategic focus on niche products and markets.

Traffic Statistics January-December 2004 LX Scheduled Services



	Passengers Europe	Passengers Intercontinental	Passengers Total	SLF Europe	SLF Intercontinental	SLF Total
Jan	488'989	190'710	679'699	51.5%	77.8%	70.2%
Feb	504'960	173'962	678'922	54.6%	75.9%	69.6%
Mar	602'964	198'178	801'142	60.3%	81.1%	74.8%
Apr	629'871	189'881	819'752	66.8%	81.9%	77.2%
May	606'582	182'270	788'852	62.8%	76.8%	72.5%
Jun	610'949	185'663	796'612	65.4%	81.5%	76.5%
Jul	616'782	199'166	815'948	65.9%	84.2%	78.5%
Aug	611'958	207'257	819'215	66.0%	85.5%	79.4%
Sep	618'408	191'552	809'960	65.3%	83.8%	78.0%
Oct						
Nov						
Dec						

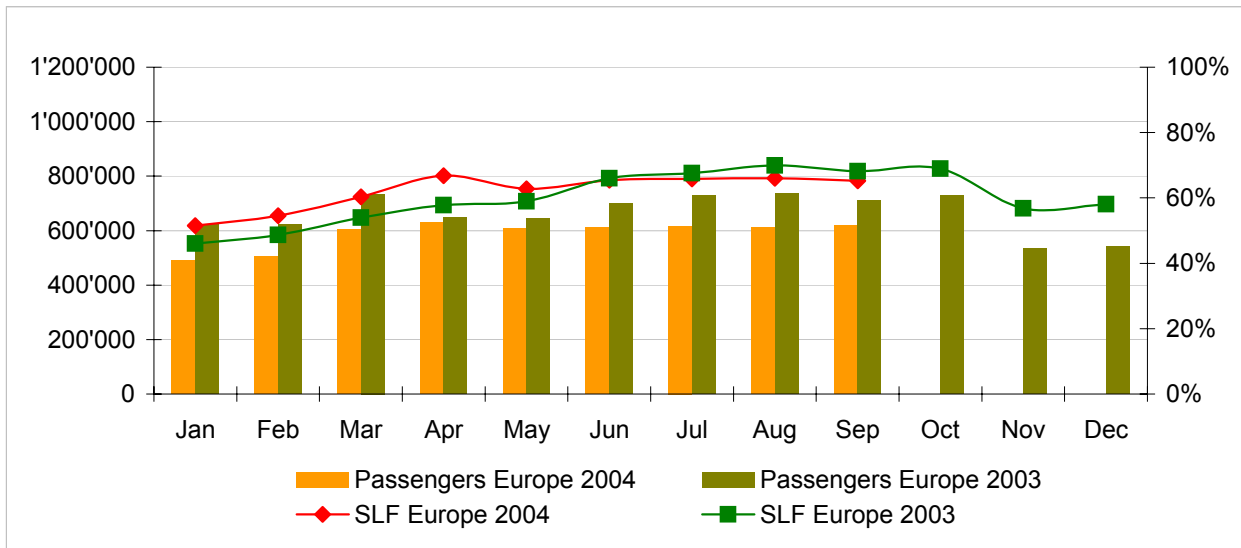
Comparison Passengers and Seat Load Factor (SLF %) versus prior year



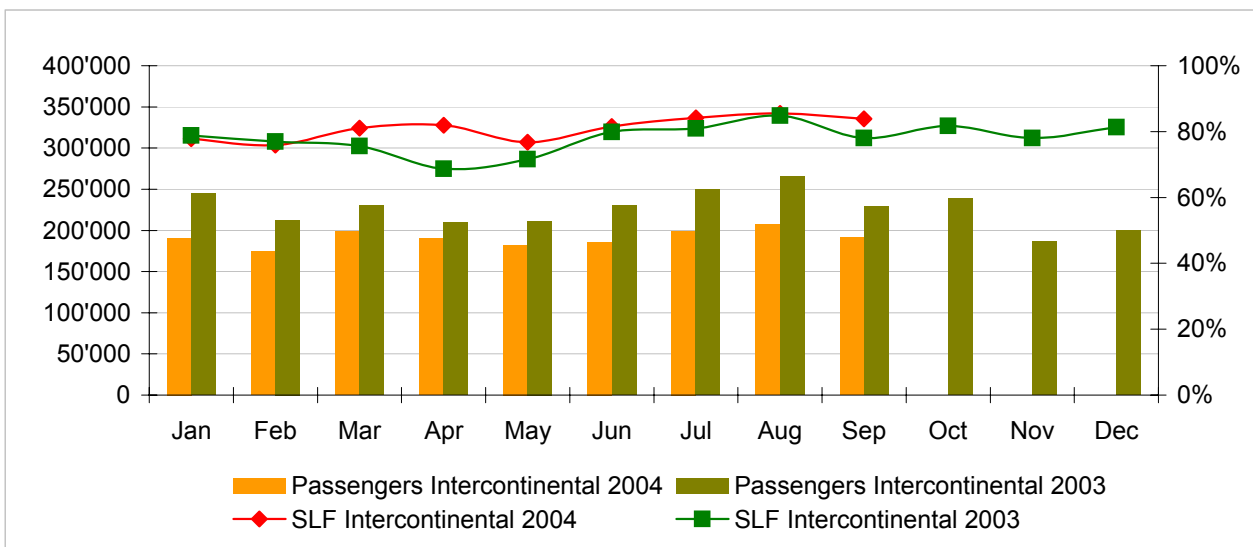
Next updates:

- October 04 figures November 10th, 2004
- November 04 figures December 10th, 2004
- December 04 figures January 14th, 2005

Passengers and Seat Load Factor (SLF %) European Routes
Comparison versus prior year



Passengers and Seat Load Factor (SLF %) Intercontinental Routes
Comparison versus prior year



Traffic Statistics January 2004 LX Scheduled Services



Swiss
International
Air Lines

	January			Cumulative		
	2004	2003		2004	2003	
Number of Passengers ¹⁾						
Europe	488'989	623'788	-21.6%	488'989	623'788	-21.6%
Intercontinental	190'710	245'067	-22.2%	190'710	245'067	-22.2%
Total	679'699	868'855	-21.8%	679'699	868'855	-21.8%
Flights						
Europe	10'640	17'314	-38.5%	10'640	17'314	-38.5%
Intercontinental	1'446	1'836	-21.2%	1'446	1'836	-21.2%
Total	12'086	19'150	-36.9%	12'086	19'150	-36.9%
Available Seat km (ASK, in mill)						
Europe	703	1'043	-32.6%	703	1'043	-32.6%
Intercontinental	1'724	2'094	-17.7%	1'724	2'094	-17.7%
Total	2'427	3'136	-22.6%	2'427	3'136	-22.6%
Revenue Passenger km (RPK, in mill)						
Europe	362	480	-24.6%	362	480	-24.6%
Intercontinental	1'341	1'651	-18.7%	1'341	1'651	-18.7%
Total	1'704	2'131	-20.1%	1'704	2'131	-20.1%
Seat Load Factor (SLF %) ²⁾						
Europe	51.5%	46.1%	5.4%	51.5%	46.1%	5.4%
Intercontinental	77.8%	78.9%	-1.0%	77.8%	78.9%	-1.0%
Total	70.2%	68.0%	2.2%	70.2%	68.0%	2.2%
Freight Load Factor (%) ³⁾						
Intercontinental	80.0%	77.9%	2.1%	80.0%	77.9%	2.1%
Freight Tonnes Kilometers (FTK, in 1000)						
Intercontinental	85'117	106'301	-19.9%	85'117	106'301	-19.9%

¹⁾ Revenue Passengers

²⁾ SLF = RPK / ASK
deviation in % pts

³⁾ Including mail
deviation in % pts

Traffic Statistics February 2004 LX Scheduled Services



Swiss
International
Air Lines

	February			Cumulative		
	2004	2003		2004	2003	
Number of Passengers ¹⁾						
Europe	504'960	622'717	-18.9%	993'949	1'246'505	-20.3%
Intercontinental	173'962	212'633	-18.2%	364'672	457'700	-20.3%
Total	678'922	835'350	-18.7%	1'358'621	1'704'205	-20.3%
Flights						
Europe	10'149	16'171	-37.2%	20'789	33'485	-37.9%
Intercontinental	1'352	1'642	-17.7%	2'798	3'478	-19.6%
Total	11'501	17'813	-35.4%	23'587	36'963	-36.2%
Available Seat km (ASK, in mill)						
Europe	669	957	-30.1%	1'372	2'000	-31.4%
Intercontinental	1'603	1'875	-14.5%	3'327	3'968	-16.2%
Total	2'272	2'832	-19.8%	4'699	5'968	-21.3%
Revenue Passenger km (RPK, in mill)						
Europe	365	466	-21.7%	727	947	-23.2%
Intercontinental	1'217	1'443	-15.7%	2'558	3'094	-17.3%
Total	1'582	1'910	-17.2%	3'285	4'041	-18.7%
Seat Load Factor (SLF %) ²⁾						
Europe	54.6%	48.7%	5.9%	53.0%	47.3%	5.7%
Intercontinental	75.9%	77.0%	-1.1%	76.9%	78.0%	-1.1%
Total	69.6%	67.4%	2.2%	69.9%	67.7%	2.2%
Freight Load Factor (%) ³⁾						
Intercontinental	90.0%	86.0%	4.0%	85.0%	82.0%	3.0%
Freight Tonnes Kilometers (FTK, in 1000)						
Intercontinental	97'771	108'934	-10.2%	182'888	215'235	-15.0%

¹⁾ Revenue Passengers

²⁾ SLF = RPK / ASK
deviation in % pts

³⁾ Including mail
deviation in % pts

Traffic Statistics March 2004 LX Scheduled Services



Swiss
International
Air Lines

	March			Cumulative		
	2004	2003		2004	2003	
Number of Passengers ¹⁾						
Europe	602'964	735'116	-18.0%	1'596'913	1'981'621	-19.4%
Intercontinental	198'178	230'492	-14.0%	562'850	688'192	-18.2%
Total	801'142	965'608	-17.0%	2'159'763	2'669'813	-19.1%
Flights						
Europe	10'988	17'770	-38.2%	31'777	51'255	-38.0%
Intercontinental	1'419	1'819	-22.0%	4'217	5'297	-20.4%
Total	12'407	19'589	-36.7%	35'994	56'552	-36.4%
Available Seat km (ASK, in mill)						
Europe	729	1'044	-30.2%	2'101	3'044	-31.0%
Intercontinental	1'686	2'087	-19.2%	5'012	6'056	-17.2%
Total	2'414	3'132	-22.9%	7'113	9'100	-21.8%
Revenue Passenger km (RPK, in mill)						
Europe	440	563	-22.0%	1'167	1'510	-22.7%
Intercontinental	1'367	1'578	-13.4%	3'925	4'672	-16.0%
Total	1'806	2'141	-15.7%	5'092	6'182	-17.6%
Seat Load Factor (SLF %) ²⁾						
Europe	60.3%	54.0%	6.3%	55.5%	49.6%	5.9%
Intercontinental	81.1%	75.6%	5.5%	78.3%	77.2%	1.1%
Total	74.8%	68.4%	6.4%	71.6%	67.9%	3.7%
Freight Load Factor (%) ³⁾						
Intercontinental	91.0%	87.4%	3.6%	87.0%	83.8%	3.2%
Freight Tonnes Kilometers (FTK, in 1000)						
Intercontinental	104'478	120'393	-13.2%	287'366	335'628	-14.4%

¹⁾ Revenue Passengers

²⁾ SLF = RPK / ASK
deviation in % pts

³⁾ Including mail
deviation in % pts

Traffic Statistics April 2004 LX Scheduled Services



Swiss
International
Air Lines

	April			Cumulative		
	2004	2003		2004	2003	
Number of Passengers ¹⁾						
Europe	629'871	647'474	-2.7%	2'226'784	2'629'095	-15.3%
Intercontinental	189'881	209'610	-9.4%	752'731	897'802	-16.2%
Total	819'752	857'084	-4.4%	2'979'515	3'526'897	-15.5%
Flights						
Europe	10'622	14'025	-24.3%	42'399	65'280	-35.1%
Intercontinental	1'299	1'727	-24.8%	5'516	7'024	-21.5%
Total	11'921	15'752	-24.3%	47'915	72'304	-33.7%
Available Seat km (ASK, in mill)						
Europe	705	867	-18.7%	2'806	3'911	-28.3%
Intercontinental	1'561	2'010	-22.3%	6'573	8'066	-18.5%
Total	2'266	2'877	-21.2%	9'379	11'977	-21.7%
Revenue Passenger km (RPK, in mill)						
Europe	471	501	-6.0%	1'638	2'011	-18.5%
Intercontinental	1'278	1'381	-7.5%	5'203	6'054	-14.1%
Total	1'749	1'882	-7.1%	6'841	8'065	-15.2%
Seat Load Factor (SLF %) ²⁾						
Europe	66.8%	57.8%	9.0%	58.4%	51.4%	7.0%
Intercontinental	81.9%	68.7%	13.2%	79.2%	75.1%	4.1%
Total	77.2%	65.4%	11.8%	72.9%	67.3%	5.6%
Freight Load Factor (%) ³⁾						
Intercontinental	83.0%	82.6%	0.4%	86.0%	83.5%	2.5%
Freight Tonnes Kilometers (FTK, in 1000)						
Intercontinental	88'759	116'773	-24.0%	376'125	452'401	-16.9%

¹⁾ Revenue Passengers

²⁾ SLF = RPK / ASK
deviation in % pts

³⁾ Including mail
deviation in % pts

Traffic Statistics May 2004 LX Scheduled Services



	May			Cumulative		
	2004	2003		2004	2003	
Number of Passengers ¹⁾						
Europe	606'582	643'856	-5.8%	2'833'366	3'272'951	-13.4%
Intercontinental	182'270	211'550	-13.8%	935'001	1'109'352	-15.7%
Total	788'852	855'406	-7.8%	3'768'367	4'382'303	-14.0%
Flights						
Europe	10'883	14'297	-23.9%	53'282	79'577	-33.0%
Intercontinental	1'331	1'715	-22.4%	6'847	8'739	-21.7%
Total	12'214	16'012	-23.7%	60'129	88'316	-31.9%
Available Seat km (ASK, in mill)						
Europe	718	846	-15.1%	3'524	4'757	-25.9%
Intercontinental	1'607	1'936	-17.0%	8'180	10'002	-18.2%
Total	2'325	2'782	-16.4%	11'704	14'759	-20.7%
Revenue Passenger km (RPK, in mill)						
Europe	451	499	-9.6%	2'089	2'510	-16.8%
Intercontinental	1'234	1'386	-11.0%	6'437	7'440	-13.5%
Total	1'685	1'885	-10.6%	8'526	9'950	-14.3%
Seat Load Factor (SLF %) ²⁾						
Europe	62.8%	59.0%	3.8%	59.3%	52.8%	6.5%
Intercontinental	76.8%	71.6%	5.2%	78.7%	74.4%	4.3%
Total	72.5%	67.7%	4.8%	72.8%	67.4%	5.4%
Freight Load Factor (%) ³⁾						
Intercontinental	84.7%	85.5%	-0.8%	85.7%	83.9%	1.8%
Freight Tonnes Kilometers (FTK, in 1000)						
Intercontinental	95'309	110'594	-13.8%	471'434	562'995	-16.3%

¹⁾ Revenue Passengers

²⁾ SLF = RPK / ASK
deviation in % pts

³⁾ Including mail
deviation in % pts

Traffic Statistics June 2004 LX Scheduled Services



	June			Cumulative		
	2004	2003		2004	2003	
Number of Passengers ¹⁾						
Europe	610'949	700'468	-12.8%	3'444'315	3'973'419	-13.3%
Intercontinental	185'663	230'101	-19.3%	1'120'664	1'339'453	-16.3%
Total	796'612	930'569	-14.4%	4'564'979	5'312'872	-14.1%
Flights						
Europe	10'574	13'978	-24.4%	63'856	93'555	-31.7%
Intercontinental	1'282	1'686	-24.0%	8'129	10'425	-22.0%
Total	11'856	15'664	-24.3%	71'985	103'980	-30.8%
Available Seat km (ASK, in mill)						
Europe	707	828	-14.6%	4'231	5'585	-24.2%
Intercontinental	1'547	1'892	-18.2%	9'727	11'894	-18.2%
Total	2'254	2'719	-17.1%	13'958	17'479	-20.1%
Revenue Passenger km (RPK, in mill)						
Europe	462	546	-15.3%	2'551	3'056	-16.5%
Intercontinental	1'261	1'511	-16.5%	7'698	8'951	-14.0%
Total	1'724	2'057	-16.2%	10'249	12'007	-14.6%
Seat Load Factor (SLF %) ²⁾						
Europe	65.4%	66.0%	-0.6%	60.3%	54.7%	5.6%
Intercontinental	81.5%	79.9%	1.6%	79.1%	75.3%	3.8%
Total	76.5%	75.7%	0.8%	73.4%	68.7%	4.7%
Freight Load Factor (%) ³⁾						
Intercontinental	86.9%	84.5%	2.4%	85.9%	84.0%	1.9%
Freight Tonnes Kilometers (FTK, in 1000)						
Intercontinental	95'382	106'280	-10.3%	566'816	669'275	-15.3%

¹⁾ Revenue Passengers

²⁾ SLF = RPK / ASK
deviation in % pts

³⁾ Including mail
deviation in % pts

Traffic Statistics July 2004 LX Scheduled Services



	July			Cumulative		
	2004	2003		2004	2003	
Number of Passengers ¹⁾						
Europe	616'782	727'706	-15.2%	4'061'097	4'701'125	-13.6%
Intercontinental	199'166	249'520	-20.2%	1'319'830	1'588'973	-16.9%
Total	815'948	977'226	-16.5%	5'380'927	6'290'098	-14.5%
Flights						
Europe	10'889	14'286	-23.8%	74'745	107'841	-30.7%
Intercontinental	1'332	1'771	-24.8%	9'461	12'196	-22.4%
Total	12'221	16'057	-23.9%	84'206	120'037	-29.8%
Available Seat km (ASK, in mill)						
Europe	725	850	-14.7%	4'956	6'435	-23.0%
Intercontinental	1'603	2'015	-20.4%	11'330	13'909	-18.5%
Total	2'328	2'865	-18.7%	16'286	20'343	-19.9%
Revenue Passenger km (RPK, in mill)						
Europe	477	575	-16.9%	3'029	3'631	-16.6%
Intercontinental	1'350	1'633	-17.3%	9'048	10'584	-14.5%
Total	1'827	2'207	-17.2%	12'076	14'215	-15.0%
Seat Load Factor (SLF %) ²⁾						
Europe	65.9%	67.6%	-1.7%	61.1%	56.4%	4.7%
Intercontinental	84.2%	81.0%	3.2%	79.9%	76.1%	3.8%
Total	78.5%	77.1%	1.4%	74.2%	69.9%	4.3%
Freight Load Factor (%) ³⁾						
Intercontinental	86.0%	83.7%	2.3%	85.9%	83.9%	2.0%
Freight Tonnes Kilometers (FTK, in 1000)						
Intercontinental	94'999	99'370	-4.4%	661'815	768'645	-13.9%

¹⁾ Revenue Passengers

²⁾ SLF = RPK / ASK
deviation in % pts

³⁾ Including mail
deviation in % pts

Traffic Statistics August 2004 LX Scheduled Services



Swiss
International
Air Lines

	August			Cumulative		
	2004	2003		2004	2003	
Number of Passengers ¹⁾						
Europe	611'958	736'117	-16.9%	4'673'055	5'437'242	-14.1%
Intercontinental	207'257	265'112	-21.8%	1'527'087	1'854'085	-17.6%
Total	819'215	1'001'229	-18.2%	6'200'142	7'291'327	-15.0%
Flights						
Europe	10'646	13'864	-23.2%	85'391	121'705	-29.8%
Intercontinental	1'333	1'803	-26.1%	10'794	13'999	-22.9%
Total	11'979	15'667	-23.5%	96'185	135'704	-29.1%
Available Seat km (ASK, in mill)						
Europe	727	847	-14.2%	5'682	7'282	-22.0%
Intercontinental	1'602	2'034	-21.2%	12'932	15'943	-18.9%
Total	2'329	2'881	-19.2%	18'615	23'224	-19.8%
Revenue Passenger km (RPK, in mill)						
Europe	480	592	-19.0%	3'508	4'223	-16.9%
Intercontinental	1'370	1'725	-20.6%	10'418	12'309	-15.4%
Total	1'850	2'317	-20.2%	13'926	16'531	-15.8%
Seat Load Factor (SLF %) ²⁾						
Europe	66.0%	69.9%	-3.9%	61.7%	58.0%	3.7%
Intercontinental	85.5%	84.8%	0.7%	80.6%	77.2%	3.4%
Total	79.4%	80.4%	-1.0%	74.8%	71.2%	3.6%
Freight Load Factor (%) ³⁾						
Intercontinental	84.6%	79.7%	4.9%	85.8%	83.4%	2.4%
Freight Tonnes Kilometers (FTK, in 1000)						
Intercontinental	92'368	97'449	-5.2%	754'183	866'094	-12.9%

¹⁾ Revenue Passengers

²⁾ SLF = RPK / ASK
deviation in % pts

³⁾ Including mail
deviation in % pts

Traffic Statistics September 2004 LX Scheduled Services



	September			Cumulative		
	2004	2003		2004	2003	
Number of Passengers ¹⁾						
Europe	618'408	711'750	-13.1%	5'291'463	6'148'992	-13.9%
Intercontinental	191'552	228'879	-16.3%	1'718'639	2'082'964	-17.5%
Total	809'960	940'629	-13.9%	7'010'102	8'231'956	-14.8%
Flights						
Europe	10'670	13'288	-19.7%	96'061	134'993	-28.8%
Intercontinental	1'277	1'676	-23.8%	12'071	15'675	-23.0%
Total	11'947	14'964	-20.2%	108'132	150'668	-28.2%
Available Seat km (ASK, in mill)						
Europe	709	811	-12.5%	6'392	8'092	-21.0%
Intercontinental	1'533	1'878	-18.4%	14'465	17'821	-18.8%
Total	2'242	2'689	-16.6%	20'856	25'913	-19.5%
Revenue Passenger km (RPK, in mill)						
Europe	463	553	-16.3%	3'971	4'776	-16.8%
Intercontinental	1'285	1'465	-12.3%	11'703	13'774	-15.0%
Total	1'748	2'018	-13.4%	15'674	18'549	-15.5%
Seat Load Factor (SLF %) ²⁾						
Europe	65.3%	68.2%	-2.9%	62.1%	59.0%	3.1%
Intercontinental	83.8%	78.0%	5.8%	80.9%	77.3%	3.6%
Total	78.0%	75.0%	3.0%	75.2%	71.6%	3.6%
Estimate Freight Load Factor (%) ³⁾						
Intercontinental	85.9%	85.2%	0.7%	85.8%	83.6%	2.2%
Estimate Freight Tonnes Kilometers (FTK, in 1000)						
Intercontinental	97'517	111'664	-12.7%	851'700	977'758	-12.9%

¹⁾ Revenue Passengers

²⁾ SLF = RPK / ASK
deviation in % pts

³⁾ Including mail
deviation in % pts

Traffic Statistics October 2004 LX Scheduled Services



	October		Cumulative	
	2004	2003	2004	2003
Number of Passengers ¹⁾				
Europe	727'741		6'876'733	
Intercontinental	238'261		2'321'225	
Total	966'002		9'197'958	
Flights				
Europe	12'801		147'794	
Intercontinental	1'707		17'382	
Total	14'508		165'176	
Available Seat km (ASK, in mill)				
Europe	807		8'899	
Intercontinental	1'960		19'781	
Total	2'767		28'680	
Revenue Passenger km (RPK, in mill)				
Europe	557		5'333	
Intercontinental	1'601		15'375	
Total	2'159		20'708	
Seat Load Factor (SLF %) ²⁾				
Europe	69.0%		59.9%	
Intercontinental	81.7%		77.7%	
Total	78.0%		72.2%	
Freight Load Factor (%) ³⁾				
Intercontinental	85.5%		83.8%	
Freight Tonnes Kilometers (FTK, in 1000)				
Intercontinental	104'207		1'081'965	

¹⁾ Revenue Passengers

²⁾ SLF = RPK / ASK
deviation in % pts

³⁾ Including mail
deviation in % pts

Traffic Statistics November 2004 LX Scheduled Services



	November		Cumulative	
	2004	2003	2004	2003
Number of Passengers ¹⁾				
Europe	533'209		7'409'942	
Intercontinental	186'914		2'508'139	
Total	720'123		9'918'081	
Flights				
Europe	10'510		158'304	
Intercontinental	1'417		18'799	
Total	11'927		177'103	
Available Seat km (ASK, in mill)				
Europe	691		9'590	
Intercontinental	1'691		21'471	
Total	2'382		31'062	
Revenue Passenger km (RPK, in mill)				
Europe	392		5'725	
Intercontinental	1'319		16'694	
Total	1'711		22'419	
Seat Load Factor (SLF %) ²⁾				
Europe	56.8%		59.7%	
Intercontinental	78.0%		77.8%	
Total	71.8%		72.2%	
Freight Load Factor (%) ³⁾				
Intercontinental	87.7%		84.2%	
Freight Tonnes Kilometers (FTK, in 1000)				
Intercontinental	98'420		1'180'385	

¹⁾ Revenue Passengers

²⁾ SLF = RPK / ASK
deviation in % pts

³⁾ Including mail
deviation in % pts

Traffic Statistics December 2004 LX Scheduled Services



	December		Cumulative	
	2004	2003	2004	2003
Number of Passengers ¹⁾				
Europe	542'537		7'952'479	
Intercontinental	200'097		2'708'236	
Total	742'634		10'660'715	
Flights				
Europe	10'535		168'839	
Intercontinental	1'448		20'247	
Total	11'983		189'086	
Available Seat km (ASK, in mill)				
Europe	695		10'285	
Intercontinental	1'722		23'193	
Total	2'417		33'478	
Revenue Passenger km (RPK, in mill)				
Europe	403		6'128	
Intercontinental	1'401		18'095	
Total	1'804		24'223	
Seat Load Factor (SLF %) ²⁾				
Europe	58.1%		59.6%	
Intercontinental	81.3%		78.0%	
Total	74.6%		72.4%	
Freight Load Factor (%) ³⁾				
Intercontinental	86.7%		84.4%	
Freight Tonnes Kilometers (FTK, in 1000)				
Intercontinental	94'363		1'274'748	

¹⁾ Revenue Passengers

²⁾ SLF = RPK / ASK
deviation in % pts

³⁾ Including mail
deviation in % pts