

SWISS Traffic figures

January – October 2004

SWISS load factor figures: Stable overall

SWISS achieved a seat load factor (SLF) of 77.7% on its scheduled services in October 2004, 0.3 percentage points down on the same period last year. The seat kilometre offering was cut by 16.0% compared to the previous year. Despite this, the shortfall in the number of seat-kilometres sold was larger, at 16.4%, which led to a slightly lower load factor. In contrast, development in the load factor on the intercontinental network was very encouraging. An increase of 2.4 percentage points generated a SLF of 84.1%. In Europe, however, the load factor lost 5.4 percentage points, falling to 63.6%. SWISS carried 814,992 passengers on its scheduled flights in October. Adjustments to the route network resulting in a reduction in the number of seats available make it impossible to make a year-on-year comparison of absolute passenger volumes.

The seat load factor on the European network was 63.6% in October, 5.4 percentage points less than the same period in the previous year. Although there were 10.3% fewer available seat kilometres (ASK) than in the previous year, there was a 17.4% shortfall in revenue passenger kilometres (RPK). The load factor in Europe is unsatisfactory. In some markets, SWISS is feeling the growing pressure of competition from low-cost carriers. In the resized SWISS network, the greater number of long-haul passengers arriving in or departing from Switzerland (local passengers) continues to impact negatively on the SLF in Europe because this means the well filled intercontinental flights are able to accept fewer transfer passengers from and to European destinations. The load factor was also affected by the capacity increases which SWISS made on selected routes.

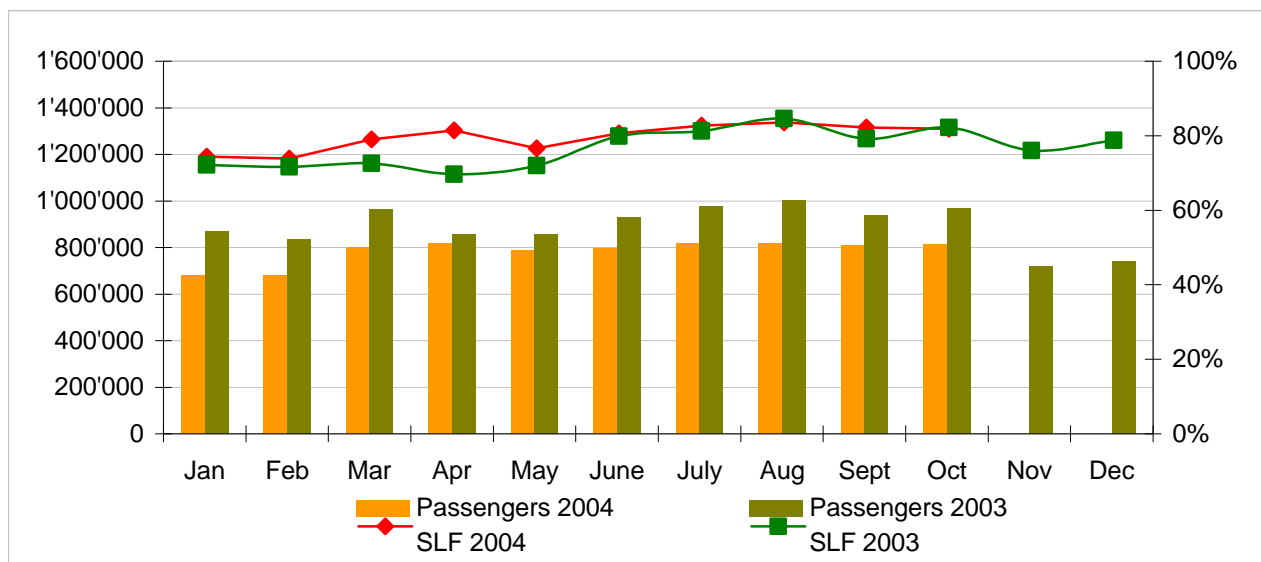
The seat load factor on the intercontinental network was 84.1% in October 2004 compared to 81.7% last year. The number of available seat kilometres (ASK) was cut by 18.4% compared to last year. The decline in revenue passenger kilometres (RPK) amounted to 16.0% during the same period. The greatest improvement in load factor was seen on connections to the Middle East, up 4.7 percentage points to 74.7%. Flights to the Far East were 0.2 percentage points better filled at 85.8%. The load factor on connections to South America was a high 87.4%, but ended slightly in the minus with a fall of 0.2 percentage points. The load factor on routes to Africa rose by 3.6 percentage points to 79.8%, on North Atlantic flights it climbed by 4.3 percentage points to 86.0%.

Traffic Statistics January-December 2004 LX Scheduled Services



	Passengers Europe	Passengers Intercontinental	Passengers Total	SLF Europe	SLF Intercontinental	SLF Total
Jan	488'989	190'710	679'699	51.5%	77.8%	70.2%
Feb	504'960	173'962	678'922	54.6%	75.9%	69.6%
Mar	602'964	198'178	801'142	60.3%	81.1%	74.8%
Apr	629'871	189'881	819'752	66.8%	81.9%	77.2%
May	606'582	182'270	788'852	62.8%	76.8%	72.5%
Jun	610'949	185'663	796'612	65.4%	81.5%	76.5%
Jul	616'782	199'166	815'948	65.9%	84.2%	78.5%
Aug	611'958	207'257	819'215	66.0%	85.5%	79.4%
Sep	618'408	191'552	809'960	65.3%	83.8%	78.0%
Oct	615'779	199'213	814'992	63.6%	84.1%	77.7%
Nov						
Dec						

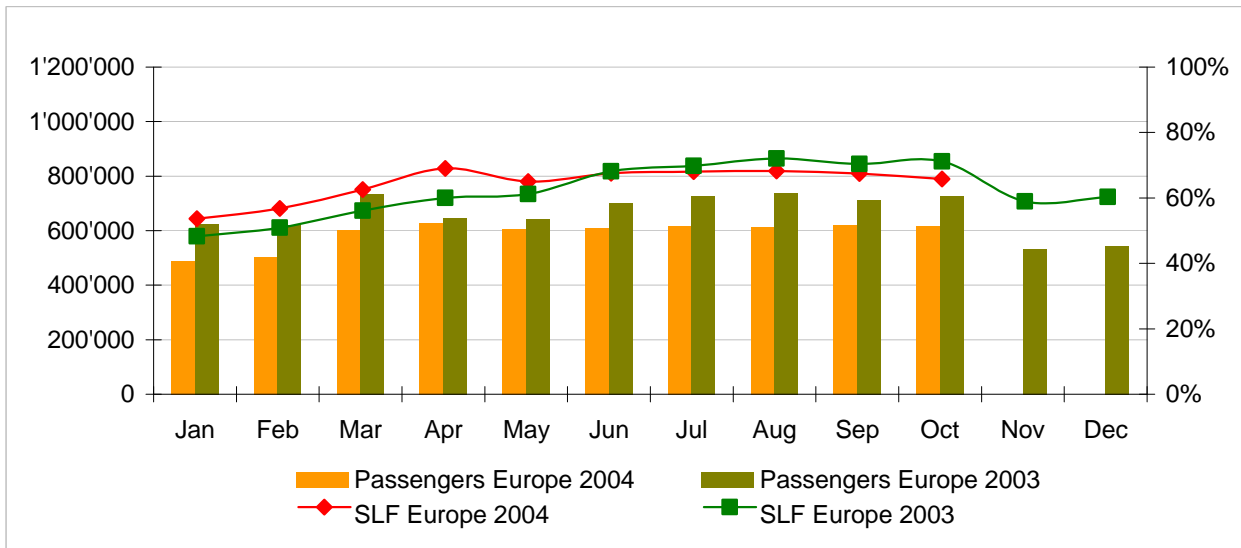
Comparison Passengers and Seat Load Factor (SLF %) versus prior year



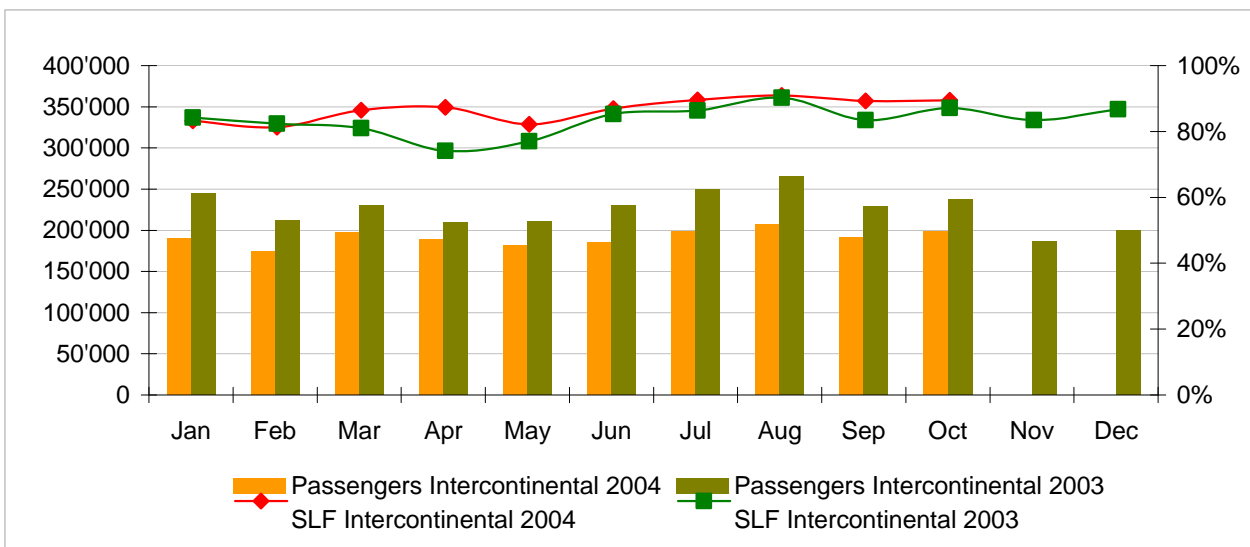
Next updates:

- November 04 figures December 10th, 2004
- December 04 figures January 14th, 2005

Passengers and Seat Load Factor (SLF %) European Routes
Comparison versus prior year



Passengers and Seat Load Factor (SLF %) Intercontinental Routes
Comparison versus prior year



Traffic Statistics January 2004 LX Scheduled Services



Swiss
International
Air Lines

	January			Cumulative		
	2004	2003		2004	2003	
Number of Passengers ¹⁾						
Europe	488'989	623'788	-21.6%	488'989	623'788	-21.6%
Intercontinental	190'710	245'067	-22.2%	190'710	245'067	-22.2%
Total	679'699	868'855	-21.8%	679'699	868'855	-21.8%
Flights						
Europe	10'640	17'314	-38.5%	10'640	17'314	-38.5%
Intercontinental	1'446	1'836	-21.2%	1'446	1'836	-21.2%
Total	12'086	19'150	-36.9%	12'086	19'150	-36.9%
Available Seat km (ASK, in mill)						
Europe	703	1'043	-32.6%	703	1'043	-32.6%
Intercontinental	1'724	2'094	-17.7%	1'724	2'094	-17.7%
Total	2'427	3'136	-22.6%	2'427	3'136	-22.6%
Revenue Passenger km (RPK, in mill)						
Europe	362	480	-24.6%	362	480	-24.6%
Intercontinental	1'341	1'651	-18.7%	1'341	1'651	-18.7%
Total	1'704	2'131	-20.1%	1'704	2'131	-20.1%
Seat Load Factor (SLF %) ²⁾						
Europe	51.5%	46.1%	5.4%	51.5%	46.1%	5.4%
Intercontinental	77.8%	78.9%	-1.0%	77.8%	78.9%	-1.0%
Total	70.2%	68.0%	2.2%	70.2%	68.0%	2.2%
Freight Load Factor (%) ³⁾						
Intercontinental	80.0%	77.9%	2.1%	80.0%	77.9%	2.1%
Freight Tonnes Kilometers (FTK, in 1000)						
Intercontinental	85'117	106'301	-19.9%	85'117	106'301	-19.9%

¹⁾ Revenue Passengers

²⁾ SLF = RPK / ASK
deviation in % pts

³⁾ Including mail
deviation in % pts

Traffic Statistics February 2004 LX Scheduled Services



Swiss
International
Air Lines

	February			Cumulative		
	2004	2003		2004	2003	
Number of Passengers ¹⁾						
Europe	504'960	622'717	-18.9%	993'949	1'246'505	-20.3%
Intercontinental	173'962	212'633	-18.2%	364'672	457'700	-20.3%
Total	678'922	835'350	-18.7%	1'358'621	1'704'205	-20.3%
Flights						
Europe	10'149	16'171	-37.2%	20'789	33'485	-37.9%
Intercontinental	1'352	1'642	-17.7%	2'798	3'478	-19.6%
Total	11'501	17'813	-35.4%	23'587	36'963	-36.2%
Available Seat km (ASK, in mill)						
Europe	669	957	-30.1%	1'372	2'000	-31.4%
Intercontinental	1'603	1'875	-14.5%	3'327	3'968	-16.2%
Total	2'272	2'832	-19.8%	4'699	5'968	-21.3%
Revenue Passenger km (RPK, in mill)						
Europe	365	466	-21.7%	727	947	-23.2%
Intercontinental	1'217	1'443	-15.7%	2'558	3'094	-17.3%
Total	1'582	1'910	-17.2%	3'285	4'041	-18.7%
Seat Load Factor (SLF %) ²⁾						
Europe	54.6%	48.7%	5.9%	53.0%	47.3%	5.7%
Intercontinental	75.9%	77.0%	-1.1%	76.9%	78.0%	-1.1%
Total	69.6%	67.4%	2.2%	69.9%	67.7%	2.2%
Freight Load Factor (%) ³⁾						
Intercontinental	90.0%	86.0%	4.0%	85.0%	82.0%	3.0%
Freight Tonnes Kilometers (FTK, in 1000)						
Intercontinental	97'771	108'934	-10.2%	182'888	215'235	-15.0%

¹⁾ Revenue Passengers

²⁾ SLF = RPK / ASK
deviation in % pts

³⁾ Including mail
deviation in % pts

Traffic Statistics March 2004 LX Scheduled Services



	March			Cumulative		
	2004	2003		2004	2003	
Number of Passengers ¹⁾						
Europe	602'964	735'116	-18.0%	1'596'913	1'981'621	-19.4%
Intercontinental	198'178	230'492	-14.0%	562'850	688'192	-18.2%
Total	801'142	965'608	-17.0%	2'159'763	2'669'813	-19.1%
Flights						
Europe	10'988	17'770	-38.2%	31'777	51'255	-38.0%
Intercontinental	1'419	1'819	-22.0%	4'217	5'297	-20.4%
Total	12'407	19'589	-36.7%	35'994	56'552	-36.4%
Available Seat km (ASK, in mill)						
Europe	729	1'044	-30.2%	2'101	3'044	-31.0%
Intercontinental	1'686	2'087	-19.2%	5'012	6'056	-17.2%
Total	2'414	3'132	-22.9%	7'113	9'100	-21.8%
Revenue Passenger km (RPK, in mill)						
Europe	440	563	-22.0%	1'167	1'510	-22.7%
Intercontinental	1'367	1'578	-13.4%	3'925	4'672	-16.0%
Total	1'806	2'141	-15.7%	5'092	6'182	-17.6%
Seat Load Factor (SLF %) ²⁾						
Europe	60.3%	54.0%	6.3%	55.5%	49.6%	5.9%
Intercontinental	81.1%	75.6%	5.5%	78.3%	77.2%	1.1%
Total	74.8%	68.4%	6.4%	71.6%	67.9%	3.7%
Freight Load Factor (%) ³⁾						
Intercontinental	91.0%	87.4%	3.6%	87.0%	83.8%	3.2%
Freight Tonnes Kilometers (FTK, in 1000)						
Intercontinental	104'478	120'393	-13.2%	287'366	335'628	-14.4%

¹⁾ Revenue Passengers

²⁾ SLF = RPK / ASK
deviation in % pts

³⁾ Including mail
deviation in % pts

Traffic Statistics April 2004 LX Scheduled Services



	April			Cumulative		
	2004	2003		2004	2003	
Number of Passengers ¹⁾						
Europe	629'871	647'474	-2.7%	2'226'784	2'629'095	-15.3%
Intercontinental	189'881	209'610	-9.4%	752'731	897'802	-16.2%
Total	819'752	857'084	-4.4%	2'979'515	3'526'897	-15.5%
Flights						
Europe	10'622	14'025	-24.3%	42'399	65'280	-35.1%
Intercontinental	1'299	1'727	-24.8%	5'516	7'024	-21.5%
Total	11'921	15'752	-24.3%	47'915	72'304	-33.7%
Available Seat km (ASK, in mill)						
Europe	705	867	-18.7%	2'806	3'911	-28.3%
Intercontinental	1'561	2'010	-22.3%	6'573	8'066	-18.5%
Total	2'266	2'877	-21.2%	9'379	11'977	-21.7%
Revenue Passenger km (RPK, in mill)						
Europe	471	501	-6.0%	1'638	2'011	-18.5%
Intercontinental	1'278	1'381	-7.5%	5'203	6'054	-14.1%
Total	1'749	1'882	-7.1%	6'841	8'065	-15.2%
Seat Load Factor (SLF %) ²⁾						
Europe	66.8%	57.8%	9.0%	58.4%	51.4%	7.0%
Intercontinental	81.9%	68.7%	13.2%	79.2%	75.1%	4.1%
Total	77.2%	65.4%	11.8%	72.9%	67.3%	5.6%
Freight Load Factor (%) ³⁾						
Intercontinental	83.0%	82.6%	0.4%	86.0%	83.5%	2.5%
Freight Tonnes Kilometers (FTK, in 1000)						
Intercontinental	88'759	116'773	-24.0%	376'125	452'401	-16.9%

¹⁾ Revenue Passengers

²⁾ SLF = RPK / ASK
deviation in % pts

³⁾ Including mail
deviation in % pts

Traffic Statistics May 2004 LX Scheduled Services



Swiss
International
Air Lines

	May			Cumulative		
	2004	2003		2004	2003	
Number of Passengers ¹⁾						
Europe	606'582	643'856	-5.8%	2'833'366	3'272'951	-13.4%
Intercontinental	182'270	211'550	-13.8%	935'001	1'109'352	-15.7%
Total	788'852	855'406	-7.8%	3'768'367	4'382'303	-14.0%
Flights						
Europe	10'883	14'297	-23.9%	53'282	79'577	-33.0%
Intercontinental	1'331	1'715	-22.4%	6'847	8'739	-21.7%
Total	12'214	16'012	-23.7%	60'129	88'316	-31.9%
Available Seat km (ASK, in mill)						
Europe	718	846	-15.1%	3'524	4'757	-25.9%
Intercontinental	1'607	1'936	-17.0%	8'180	10'002	-18.2%
Total	2'325	2'782	-16.4%	11'704	14'759	-20.7%
Revenue Passenger km (RPK, in mill)						
Europe	451	499	-9.6%	2'089	2'510	-16.8%
Intercontinental	1'234	1'386	-11.0%	6'437	7'440	-13.5%
Total	1'685	1'885	-10.6%	8'526	9'950	-14.3%
Seat Load Factor (SLF %) ²⁾						
Europe	62.8%	59.0%	3.8%	59.3%	52.8%	6.5%
Intercontinental	76.8%	71.6%	5.2%	78.7%	74.4%	4.3%
Total	72.5%	67.7%	4.8%	72.8%	67.4%	5.4%
Freight Load Factor (%) ³⁾						
Intercontinental	84.7%	85.5%	-0.8%	85.7%	83.9%	1.8%
Freight Tonnes Kilometers (FTK, in 1000)						
Intercontinental	95'309	110'594	-13.8%	471'434	562'995	-16.3%

¹⁾ Revenue Passengers

²⁾ SLF = RPK / ASK
deviation in % pts

³⁾ Including mail
deviation in % pts

Traffic Statistics June 2004 LX Scheduled Services



Swiss
International
Air Lines

	June			Cumulative		
	2004	2003		2004	2003	
Number of Passengers ¹⁾						
Europe	610'949	700'468	-12.8%	3'444'315	3'973'419	-13.3%
Intercontinental	185'663	230'101	-19.3%	1'120'664	1'339'453	-16.3%
Total	796'612	930'569	-14.4%	4'564'979	5'312'872	-14.1%
Flights						
Europe	10'574	13'978	-24.4%	63'856	93'555	-31.7%
Intercontinental	1'282	1'686	-24.0%	8'129	10'425	-22.0%
Total	11'856	15'664	-24.3%	71'985	103'980	-30.8%
Available Seat km (ASK, in mill)						
Europe	707	828	-14.6%	4'231	5'585	-24.2%
Intercontinental	1'547	1'892	-18.2%	9'727	11'894	-18.2%
Total	2'254	2'719	-17.1%	13'958	17'479	-20.1%
Revenue Passenger km (RPK, in mill)						
Europe	462	546	-15.3%	2'551	3'056	-16.5%
Intercontinental	1'261	1'511	-16.5%	7'698	8'951	-14.0%
Total	1'724	2'057	-16.2%	10'249	12'007	-14.6%
Seat Load Factor (SLF %) ²⁾						
Europe	65.4%	66.0%	-0.6%	60.3%	54.7%	5.6%
Intercontinental	81.5%	79.9%	1.6%	79.1%	75.3%	3.8%
Total	76.5%	75.7%	0.8%	73.4%	68.7%	4.7%
Freight Load Factor (%) ³⁾						
Intercontinental	86.9%	84.5%	2.4%	85.9%	84.0%	1.9%
Freight Tonnes Kilometers (FTK, in 1000)						
Intercontinental	95'382	106'280	-10.3%	566'816	669'275	-15.3%

¹⁾ Revenue Passengers

²⁾ SLF = RPK / ASK
deviation in % pts

³⁾ Including mail
deviation in % pts

Traffic Statistics July 2004 LX Scheduled Services



	July			Cumulative		
	2004	2003		2004	2003	
Number of Passengers ¹⁾						
Europe	616'782	727'706	-15.2%	4'061'097	4'701'125	-13.6%
Intercontinental	199'166	249'520	-20.2%	1'319'830	1'588'973	-16.9%
Total	815'948	977'226	-16.5%	5'380'927	6'290'098	-14.5%
Flights						
Europe	10'889	14'286	-23.8%	74'745	107'841	-30.7%
Intercontinental	1'332	1'771	-24.8%	9'461	12'196	-22.4%
Total	12'221	16'057	-23.9%	84'206	120'037	-29.8%
Available Seat km (ASK, in mill)						
Europe	725	850	-14.7%	4'956	6'435	-23.0%
Intercontinental	1'603	2'015	-20.4%	11'330	13'909	-18.5%
Total	2'328	2'865	-18.7%	16'286	20'343	-19.9%
Revenue Passenger km (RPK, in mill)						
Europe	477	575	-16.9%	3'029	3'631	-16.6%
Intercontinental	1'350	1'633	-17.3%	9'048	10'584	-14.5%
Total	1'827	2'207	-17.2%	12'076	14'215	-15.0%
Seat Load Factor (SLF %) ²⁾						
Europe	65.9%	67.6%	-1.7%	61.1%	56.4%	4.7%
Intercontinental	84.2%	81.0%	3.2%	79.9%	76.1%	3.8%
Total	78.5%	77.1%	1.4%	74.2%	69.9%	4.3%
Freight Load Factor (%) ³⁾						
Intercontinental	86.0%	83.7%	2.3%	85.9%	83.9%	2.0%
Freight Tonnes Kilometers (FTK, in 1000)						
Intercontinental	94'999	99'370	-4.4%	661'815	768'645	-13.9%

¹⁾ Revenue Passengers

²⁾ SLF = RPK / ASK
deviation in % pts

³⁾ Including mail
deviation in % pts

Traffic Statistics August 2004 LX Scheduled Services



	August			Cumulative		
	2004	2003		2004	2003	
Number of Passengers ¹⁾						
Europe	611'958	736'117	-16.9%	4'673'055	5'437'242	-14.1%
Intercontinental	207'257	265'112	-21.8%	1'527'087	1'854'085	-17.6%
Total	819'215	1'001'229	-18.2%	6'200'142	7'291'327	-15.0%
Flights						
Europe	10'646	13'864	-23.2%	85'391	121'705	-29.8%
Intercontinental	1'333	1'803	-26.1%	10'794	13'999	-22.9%
Total	11'979	15'667	-23.5%	96'185	135'704	-29.1%
Available Seat km (ASK, in mill)						
Europe	727	847	-14.2%	5'682	7'282	-22.0%
Intercontinental	1'602	2'034	-21.2%	12'932	15'943	-18.9%
Total	2'329	2'881	-19.2%	18'615	23'224	-19.8%
Revenue Passenger km (RPK, in mill)						
Europe	480	592	-19.0%	3'508	4'223	-16.9%
Intercontinental	1'370	1'725	-20.6%	10'418	12'309	-15.4%
Total	1'850	2'317	-20.2%	13'926	16'531	-15.8%
Seat Load Factor (SLF %) ²⁾						
Europe	66.0%	69.9%	-3.9%	61.7%	58.0%	3.7%
Intercontinental	85.5%	84.8%	0.7%	80.6%	77.2%	3.4%
Total	79.4%	80.4%	-1.0%	74.8%	71.2%	3.6%
Freight Load Factor (%) ³⁾						
Intercontinental	84.6%	79.7%	4.9%	85.8%	83.4%	2.4%
Freight Tonnes Kilometers (FTK, in 1000)						
Intercontinental	92'368	97'449	-5.2%	754'183	866'094	-12.9%

¹⁾ Revenue Passengers

²⁾ SLF = RPK / ASK
deviation in % pts

³⁾ Including mail
deviation in % pts

Traffic Statistics September 2004 LX Scheduled Services



	September			Cumulative		
	2004	2003		2004	2003	
Number of Passengers ¹⁾						
Europe	618'408	711'750	-13.1%	5'291'463	6'148'992	-13.9%
Intercontinental	191'552	228'879	-16.3%	1'718'639	2'082'964	-17.5%
Total	809'960	940'629	-13.9%	7'010'102	8'231'956	-14.8%
Flights						
Europe	10'670	13'288	-19.7%	96'061	134'993	-28.8%
Intercontinental	1'277	1'676	-23.8%	12'071	15'675	-23.0%
Total	11'947	14'964	-20.2%	108'132	150'668	-28.2%
Available Seat km (ASK, in mill)						
Europe	709	811	-12.5%	6'392	8'092	-21.0%
Intercontinental	1'533	1'878	-18.4%	14'465	17'821	-18.8%
Total	2'242	2'689	-16.6%	20'856	25'913	-19.5%
Revenue Passenger km (RPK, in mill)						
Europe	463	553	-16.3%	3'971	4'776	-16.8%
Intercontinental	1'285	1'465	-12.3%	11'703	13'774	-15.0%
Total	1'748	2'018	-13.4%	15'674	18'549	-15.5%
Seat Load Factor (SLF %) ²⁾						
Europe	65.3%	68.2%	-2.9%	62.1%	59.0%	3.1%
Intercontinental	83.8%	78.0%	5.8%	80.9%	77.3%	3.6%
Total	78.0%	75.0%	3.0%	75.2%	71.6%	3.6%
Freight Load Factor (%) ³⁾						
Intercontinental	86.1%	85.2%	0.9%	85.8%	83.6%	2.2%
Freight Tonnes Kilometers (FTK, in 1000)						
Intercontinental	91'731	111'664	-17.9%	845'914	977'758	-13.5%

¹⁾ Revenue Passengers

²⁾ SLF = RPK / ASK
deviation in % pts

³⁾ Including mail
deviation in % pts

Traffic Statistics October 2004 LX Scheduled Services



	October			Cumulative		
	2004	2003		2004	2003	
Number of Passengers ¹⁾						
Europe	615'779	727'741	-15.4%	5'907'242	6'876'733	-14.1%
Intercontinental	199'213	238'261	-16.4%	1'917'852	2'321'225	-17.4%
Total	814'992	966'002	-15.6%	7'825'094	9'197'958	-14.9%
Flights						
Europe	10'902	12'801	-14.8%	106'963	147'794	-27.6%
Intercontinental	1'324	1'707	-22.4%	13'395	17'382	-22.9%
Total	12'226	14'508	-15.7%	120'358	165'176	-27.1%
Available Seat km (ASK, in mill)						
Europe	724	807	-10.3%	7'116	8'899	-20.0%
Intercontinental	1'599	1'960	-18.4%	16'064	19'781	-18.8%
Total	2'323	2'767	-16.0%	23'179	28'680	-19.2%
Revenue Passenger km (RPK, in mill)						
Europe	460	557	-17.4%	4'431	5'333	-16.9%
Intercontinental	1'345	1'601	-16.0%	13'047	15'375	-15.1%
Total	1'805	2'159	-16.4%	17'479	20'708	-15.6%
Seat Load Factor (SLF %) ²⁾						
Europe	63.6%	69.0%	-5.4%	62.3%	59.9%	2.4%
Intercontinental	84.1%	81.7%	2.4%	81.2%	77.7%	3.5%
Total	77.7%	78.0%	-0.3%	75.4%	72.2%	3.2%
Estimate Freight Load Factor (%) ³⁾						
Intercontinental	88.0%	85.5%	2.5%	86.0%	83.8%	2.2%
Estimate Freight Tonnes Kilometers (FTK, in 1000)						
Intercontinental	92'041	104'207	-11.7%	937'955	1'081'965	-13.3%

¹⁾ Revenue Passengers

²⁾ SLF = RPK / ASK
deviation in % pts

³⁾ Including mail
deviation in % pts

Traffic Statistics November 2004 LX Scheduled Services



	November		Cumulative	
	2004	2003	2004	2003
Number of Passengers ¹⁾				
Europe	533'209		7'409'942	
Intercontinental	186'914		2'508'139	
Total	720'123		9'918'081	
Flights				
Europe	10'510		158'304	
Intercontinental	1'417		18'799	
Total	11'927		177'103	
Available Seat km (ASK, in mill)				
Europe	691		9'590	
Intercontinental	1'691		21'471	
Total	2'382		31'062	
Revenue Passenger km (RPK, in mill)				
Europe	392		5'725	
Intercontinental	1'319		16'694	
Total	1'711		22'419	
Seat Load Factor (SLF %) ²⁾				
Europe	56.8%		59.7%	
Intercontinental	78.0%		77.8%	
Total	71.8%		72.2%	
Freight Load Factor (%) ³⁾				
Intercontinental	87.7%		84.2%	
Freight Tonnes Kilometers (FTK, in 1000)				
Intercontinental	98'420		1'180'385	

¹⁾ Revenue Passengers

²⁾ SLF = RPK / ASK
deviation in % pts

³⁾ Including mail
deviation in % pts

Traffic Statistics December 2004 LX Scheduled Services



Swiss
International
Air Lines

	December		Cumulative	
	2004	2003	2004	2003
Number of Passengers ¹⁾				
Europe	542'537		7'952'479	
Intercontinental	200'097		2'708'236	
Total	742'634		10'660'715	
Flights				
Europe	10'535		168'839	
Intercontinental	1'448		20'247	
Total	11'983		189'086	
Available Seat km (ASK, in mill)				
Europe	695		10'285	
Intercontinental	1'722		23'193	
Total	2'417		33'478	
Revenue Passenger km (RPK, in mill)				
Europe	403		6'128	
Intercontinental	1'401		18'095	
Total	1'804		24'223	
Seat Load Factor (SLF %) ²⁾				
Europe	58.1%		59.6%	
Intercontinental	81.3%		78.0%	
Total	74.6%		72.4%	
Freight Load Factor (%) ³⁾				
Intercontinental	86.7%		84.4%	
Freight Tonnes Kilometers (FTK, in 1000)				
Intercontinental	94'363		1'274'748	

¹⁾ Revenue Passengers

²⁾ SLF = RPK / ASK
deviation in % pts

³⁾ Including mail
deviation in % pts