

SWISS traffic figures

November 2004



SWISS November load factor at prior-year levels

SWISS achieved a seat load factor (SLF) of 71.4% on its scheduled services in November 2004. Available seat kilometre capacity for the month was 10.3% lower than the same period in 2003, while the decline in revenue passenger kilometres flown was slightly stronger at 10.9%. As a result, the month's seat load factor result was a slight 0.4 percentage points below its prior-year level. The positive load factor trend seen since March on the intercontinental network was maintained in November: the 81.1% seat load factor recorded for these services marked a 3.1-percentage-point improvement on the same period last year. At the same time, however, seat load factor trends on the European network could not yet be reversed, and the month saw a continuation of the current decline. Seat load factor for European services stood at 51.0%, down 5.8 percentage points on the prior-year period. SWISS carried a total of 666 300 passengers on its scheduled services in November 2004. No meaningful year-on-year comparison of absolute passenger figures can be made in view of the decrease in production resulting from adjustments to the route network.

Seat load factor on SWISS's *intercontinental network* for November 2004 amounted to 81.1%, which compares to 78.0% for the same month last year. Available seat kilometres (ASK) saw a 14.4% year-on-year decline, while revenue passenger kilometres (RPK) were 11.0% down on the prior-year period.

SWISS's seat load factors on its long-haul flights showed positive trends in almost all traffic regions. North Atlantic services posted a seat load factor of 82.2%, 4.1 percentage points up on the prior-year period. The 86.0% seat load factor recorded for Far East services was an improvement of 3.8 percentage points. Flights to and from the Middle East saw their seat load factor improve 3.7 percentage points to 71.2%. And the 75.9% seat load factor reported for African services was a 4.4-percentage-point improvement on November 2003. Seat load factor for South American services declined 5.0 percentage points, but still remained high at 80.3%.

Seat load factor on *European services* stood at 51.0% for November, 5.8 percentage points below its prior-year level. While available seat kilometres (ASK) were 0.3% down on November 2003, the decline in revenue passenger kilometres (RPK) amounted to 10.5%.

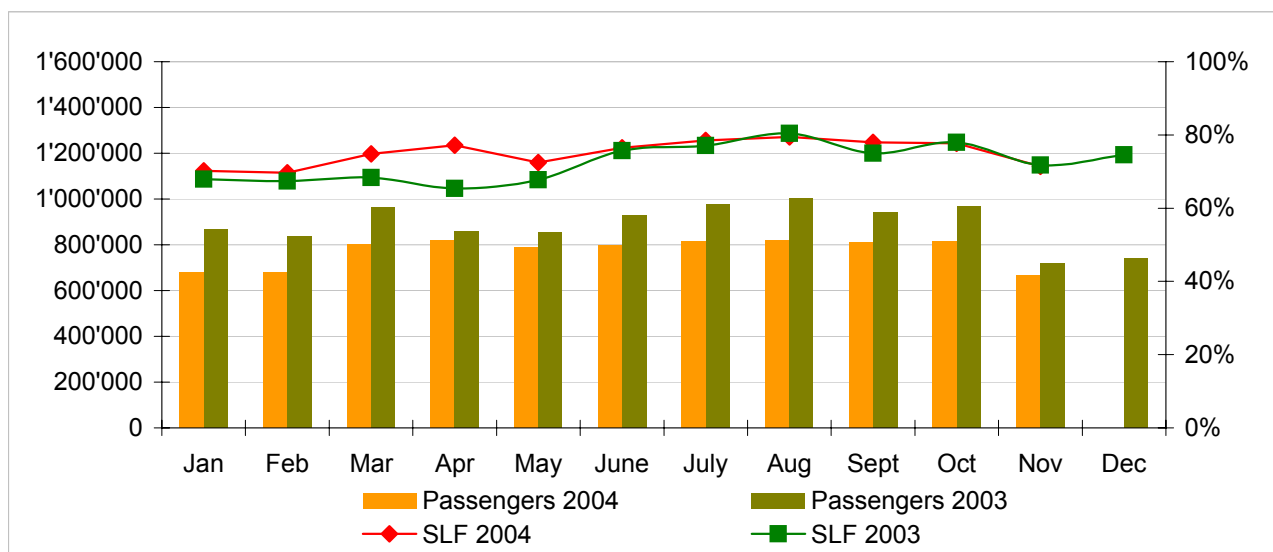
Compared to last year, the increasing pressure from competitors – and from low-cost carriers in particular – is having an adverse impact on SWISS's European load factors. On a brighter note, the volumes of long-haul passengers on SWISS European feeder flights have now recovered again as expected. This traffic had been partially displaced from the European network – especially in the busy summer months – by deliberate efforts to increase the proportion of long-haul passengers arriving in or departing from Switzerland (local passengers), a development which had had a correspondingly negative effect on load factor levels for European flights.

Traffic Statistics January-December 2004 LX Scheduled Services



	Passengers Europe	Passengers Intercontinental	Passengers Total	SLF Europe	SLF Intercontinental	SLF Total
Jan	488'989	190'710	679'699	51.5%	77.8%	70.2%
Feb	504'960	173'962	678'922	54.6%	75.9%	69.6%
Mar	602'964	198'178	801'142	60.3%	81.1%	74.8%
Apr	629'871	189'881	819'752	66.8%	81.9%	77.2%
May	606'582	182'270	788'852	62.8%	76.8%	72.5%
Jun	610'949	185'663	796'612	65.4%	81.5%	76.5%
Jul	616'782	199'166	815'948	65.9%	84.2%	78.5%
Aug	611'958	207'257	819'215	66.0%	85.5%	79.4%
Sep	618'408	191'552	809'960	65.3%	83.8%	78.0%
Oct	615'779	199'213	814'992	63.6%	84.1%	77.7%
Nov	492'037	174'263	666'300	51.0%	81.1%	71.4%
Dec						

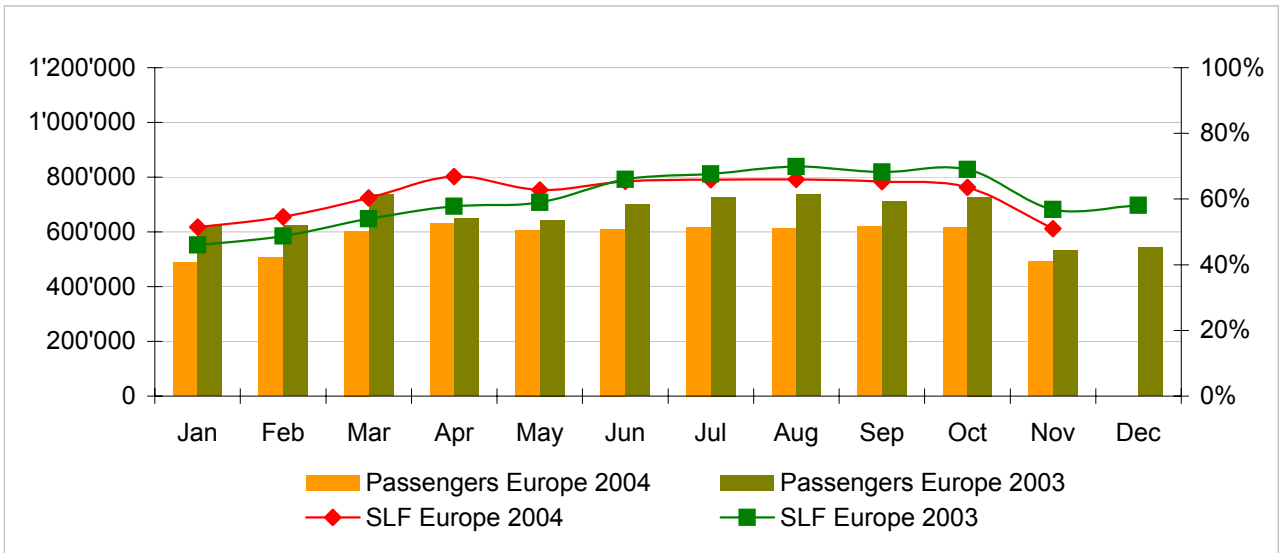
Comparison Passengers and Seat Load Factor (SLF %) versus prior year



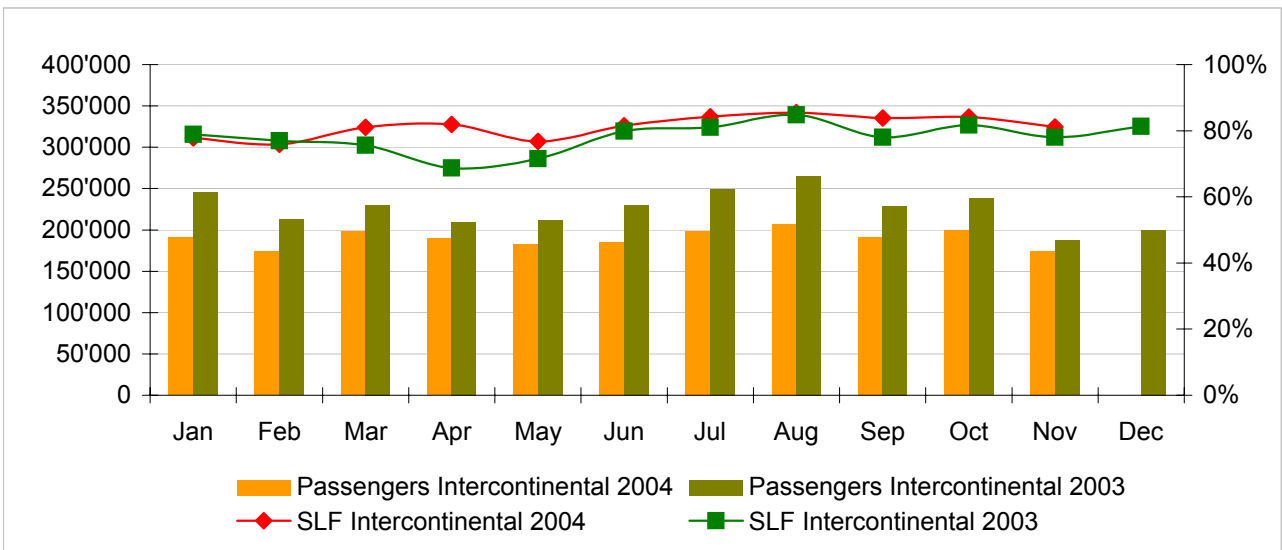
Next updates:

- December 04 figures January 11th, 2005
- January 05 figures February 10th, 2005
- February 05 figures March 10th, 2005

Passengers and Seat Load Factor (SLF %) European Routes
 Comparison versus prior year



Passengers and Seat Load Factor (SLF %) Intercontinental Routes
 Comparison versus prior year



Traffic Statistics January 2004 LX Scheduled Services



Swiss
International
Air Lines

	January			Cumulative		
	2004	2003		2004	2003	
Number of Passengers ¹⁾						
Europe	488'989	623'788	-21.6%	488'989	623'788	-21.6%
Intercontinental	190'710	245'067	-22.2%	190'710	245'067	-22.2%
Total	679'699	868'855	-21.8%	679'699	868'855	-21.8%
Flights						
Europe	10'640	17'314	-38.5%	10'640	17'314	-38.5%
Intercontinental	1'446	1'836	-21.2%	1'446	1'836	-21.2%
Total	12'086	19'150	-36.9%	12'086	19'150	-36.9%
Available Seat km (ASK, in mill)						
Europe	703	1'043	-32.6%	703	1'043	-32.6%
Intercontinental	1'724	2'094	-17.7%	1'724	2'094	-17.7%
Total	2'427	3'136	-22.6%	2'427	3'136	-22.6%
Revenue Passenger km (RPK, in mill)						
Europe	362	480	-24.6%	362	480	-24.6%
Intercontinental	1'341	1'651	-18.7%	1'341	1'651	-18.7%
Total	1'704	2'131	-20.1%	1'704	2'131	-20.1%
Seat Load Factor (SLF %) ²⁾						
Europe	51.5%	46.1%	5.4%	51.5%	46.1%	5.4%
Intercontinental	77.8%	78.9%	-1.0%	77.8%	78.9%	-1.0%
Total	70.2%	68.0%	2.2%	70.2%	68.0%	2.2%
Freight Load Factor (%) ³⁾						
Intercontinental	80.0%	77.9%	2.1%	80.0%	77.9%	2.1%
Freight Tonnes Kilometers (FTK, in 1000)						
Intercontinental	85'117	106'301	-19.9%	85'117	106'301	-19.9%

¹⁾ Revenue Passengers

²⁾ SLF = RPK / ASK
deviation in % pts

³⁾ Including mail
deviation in % pts

Traffic Statistics February 2004 LX Scheduled Services



Swiss
International
Air Lines

	February			Cumulative		
	2004	2003		2004	2003	
Number of Passengers ¹⁾						
Europe	504'960	622'717	-18.9%	993'949	1'246'505	-20.3%
Intercontinental	173'962	212'633	-18.2%	364'672	457'700	-20.3%
Total	678'922	835'350	-18.7%	1'358'621	1'704'205	-20.3%
Flights						
Europe	10'149	16'171	-37.2%	20'789	33'485	-37.9%
Intercontinental	1'352	1'642	-17.7%	2'798	3'478	-19.6%
Total	11'501	17'813	-35.4%	23'587	36'963	-36.2%
Available Seat km (ASK, in mill)						
Europe	669	957	-30.1%	1'372	2'000	-31.4%
Intercontinental	1'603	1'875	-14.5%	3'327	3'968	-16.2%
Total	2'272	2'832	-19.8%	4'699	5'968	-21.3%
Revenue Passenger km (RPK, in mill)						
Europe	365	466	-21.7%	727	947	-23.2%
Intercontinental	1'217	1'443	-15.7%	2'558	3'094	-17.3%
Total	1'582	1'910	-17.2%	3'285	4'041	-18.7%
Seat Load Factor (SLF %) ²⁾						
Europe	54.6%	48.7%	5.9%	53.0%	47.3%	5.7%
Intercontinental	75.9%	77.0%	-1.1%	76.9%	78.0%	-1.1%
Total	69.6%	67.4%	2.2%	69.9%	67.7%	2.2%
Freight Load Factor (%) ³⁾						
Intercontinental	90.0%	86.0%	4.0%	85.0%	82.0%	3.0%
Freight Tonnes Kilometers (FTK, in 1000)						
Intercontinental	97'771	108'934	-10.2%	182'888	215'235	-15.0%

¹⁾ Revenue Passengers

²⁾ SLF = RPK / ASK
deviation in % pts

³⁾ Including mail
deviation in % pts

Traffic Statistics March 2004 LX Scheduled Services



Swiss
International
Air Lines

	March			Cumulative		
	2004	2003		2004	2003	
Number of Passengers ¹⁾						
Europe	602'964	735'116	-18.0%	1'596'913	1'981'621	-19.4%
Intercontinental	198'178	230'492	-14.0%	562'850	688'192	-18.2%
Total	801'142	965'608	-17.0%	2'159'763	2'669'813	-19.1%
Flights						
Europe	10'988	17'770	-38.2%	31'777	51'255	-38.0%
Intercontinental	1'419	1'819	-22.0%	4'217	5'297	-20.4%
Total	12'407	19'589	-36.7%	35'994	56'552	-36.4%
Available Seat km (ASK, in mill)						
Europe	729	1'044	-30.2%	2'101	3'044	-31.0%
Intercontinental	1'686	2'087	-19.2%	5'012	6'056	-17.2%
Total	2'414	3'132	-22.9%	7'113	9'100	-21.8%
Revenue Passenger km (RPK, in mill)						
Europe	440	563	-22.0%	1'167	1'510	-22.7%
Intercontinental	1'367	1'578	-13.4%	3'925	4'672	-16.0%
Total	1'806	2'141	-15.7%	5'092	6'182	-17.6%
Seat Load Factor (SLF %) ²⁾						
Europe	60.3%	54.0%	6.3%	55.5%	49.6%	5.9%
Intercontinental	81.1%	75.6%	5.5%	78.3%	77.2%	1.1%
Total	74.8%	68.4%	6.4%	71.6%	67.9%	3.7%
Freight Load Factor (%) ³⁾						
Intercontinental	91.0%	87.4%	3.6%	87.0%	83.8%	3.2%
Freight Tonnes Kilometers (FTK, in 1000)						
Intercontinental	104'478	120'393	-13.2%	287'366	335'628	-14.4%

¹⁾ Revenue Passengers

²⁾ SLF = RPK / ASK
deviation in % pts

³⁾ Including mail
deviation in % pts

Traffic Statistics April 2004 LX Scheduled Services



Swiss
International
Air Lines

	April			Cumulative		
	2004	2003		2004	2003	
Number of Passengers ¹⁾						
Europe	629'871	647'474	-2.7%	2'226'784	2'629'095	-15.3%
Intercontinental	189'881	209'610	-9.4%	752'731	897'802	-16.2%
Total	819'752	857'084	-4.4%	2'979'515	3'526'897	-15.5%
Flights						
Europe	10'622	14'025	-24.3%	42'399	65'280	-35.1%
Intercontinental	1'299	1'727	-24.8%	5'516	7'024	-21.5%
Total	11'921	15'752	-24.3%	47'915	72'304	-33.7%
Available Seat km (ASK, in mill)						
Europe	705	867	-18.7%	2'806	3'911	-28.3%
Intercontinental	1'561	2'010	-22.3%	6'573	8'066	-18.5%
Total	2'266	2'877	-21.2%	9'379	11'977	-21.7%
Revenue Passenger km (RPK, in mill)						
Europe	471	501	-6.0%	1'638	2'011	-18.5%
Intercontinental	1'278	1'381	-7.5%	5'203	6'054	-14.1%
Total	1'749	1'882	-7.1%	6'841	8'065	-15.2%
Seat Load Factor (SLF %) ²⁾						
Europe	66.8%	57.8%	9.0%	58.4%	51.4%	7.0%
Intercontinental	81.9%	68.7%	13.2%	79.2%	75.1%	4.1%
Total	77.2%	65.4%	11.8%	72.9%	67.3%	5.6%
Freight Load Factor (%) ³⁾						
Intercontinental	83.0%	82.6%	0.4%	86.0%	83.5%	2.5%
Freight Tonnes Kilometers (FTK, in 1000)						
Intercontinental	88'759	116'773	-24.0%	376'125	452'401	-16.9%

¹⁾ Revenue Passengers

²⁾ SLF = RPK / ASK
deviation in % pts

³⁾ Including mail
deviation in % pts

Traffic Statistics May 2004 LX Scheduled Services



Swiss
International
Air Lines

	May			Cumulative		
	2004	2003		2004	2003	
Number of Passengers ¹⁾						
Europe	606'582	643'856	-5.8%	2'833'366	3'272'951	-13.4%
Intercontinental	182'270	211'550	-13.8%	935'001	1'109'352	-15.7%
Total	788'852	855'406	-7.8%	3'768'367	4'382'303	-14.0%
Flights						
Europe	10'883	14'297	-23.9%	53'282	79'577	-33.0%
Intercontinental	1'331	1'715	-22.4%	6'847	8'739	-21.7%
Total	12'214	16'012	-23.7%	60'129	88'316	-31.9%
Available Seat km (ASK, in mill)						
Europe	718	846	-15.1%	3'524	4'757	-25.9%
Intercontinental	1'607	1'936	-17.0%	8'180	10'002	-18.2%
Total	2'325	2'782	-16.4%	11'704	14'759	-20.7%
Revenue Passenger km (RPK, in mill)						
Europe	451	499	-9.6%	2'089	2'510	-16.8%
Intercontinental	1'234	1'386	-11.0%	6'437	7'440	-13.5%
Total	1'685	1'885	-10.6%	8'526	9'950	-14.3%
Seat Load Factor (SLF %) ²⁾						
Europe	62.8%	59.0%	3.8%	59.3%	52.8%	6.5%
Intercontinental	76.8%	71.6%	5.2%	78.7%	74.4%	4.3%
Total	72.5%	67.7%	4.8%	72.8%	67.4%	5.4%
Freight Load Factor (%) ³⁾						
Intercontinental	84.7%	85.5%	-0.8%	85.7%	83.9%	1.8%
Freight Tonnes Kilometers (FTK, in 1000)						
Intercontinental	95'309	110'594	-13.8%	471'434	562'995	-16.3%

¹⁾ Revenue Passengers

²⁾ SLF = RPK / ASK
deviation in % pts

³⁾ Including mail
deviation in % pts

Traffic Statistics June 2004 LX Scheduled Services



Swiss
International
Air Lines

	June			Cumulative		
	2004	2003		2004	2003	
Number of Passengers ¹⁾						
Europe	6'10'949	7'00'468	-12.8%	3'444'315	3'973'419	-13.3%
Intercontinental	185'663	230'101	-19.3%	1'120'664	1'339'453	-16.3%
Total	796'612	930'569	-14.4%	4'564'979	5'312'872	-14.1%
Flights						
Europe	10'574	13'978	-24.4%	63'856	93'555	-31.7%
Intercontinental	1'282	1'686	-24.0%	8'129	10'425	-22.0%
Total	11'856	15'664	-24.3%	71'985	103'980	-30.8%
Available Seat km (ASK, in mill)						
Europe	707	828	-14.6%	4'231	5'585	-24.2%
Intercontinental	1'547	1'892	-18.2%	9'727	11'894	-18.2%
Total	2'254	2'719	-17.1%	13'958	17'479	-20.1%
Revenue Passenger km (RPK, in mill)						
Europe	462	546	-15.3%	2'551	3'056	-16.5%
Intercontinental	1'261	1'511	-16.5%	7'698	8'951	-14.0%
Total	1'724	2'057	-16.2%	10'249	12'007	-14.6%
Seat Load Factor (SLF %) ²⁾						
Europe	65.4%	66.0%	-0.6%	60.3%	54.7%	5.6%
Intercontinental	81.5%	79.9%	1.6%	79.1%	75.3%	3.8%
Total	76.5%	75.7%	0.8%	73.4%	68.7%	4.7%
Freight Load Factor (%) ³⁾						
Intercontinental	86.9%	84.5%	2.4%	85.9%	84.0%	1.9%
Freight Tonnes Kilometers (FTK, in 1000)						
Intercontinental	95'382	106'280	-10.3%	566'816	669'275	-15.3%

¹⁾ Revenue Passengers

²⁾ SLF = RPK / ASK
deviation in % pts

³⁾ Including mail
deviation in % pts

Traffic Statistics July 2004 LX Scheduled Services



	July			Cumulative		
	2004	2003		2004	2003	
Number of Passengers ¹⁾						
Europe	6'167'822	7'277'066	-15.2%	4'061'097	4'701'125	-13.6%
Intercontinental	199'166	249'520	-20.2%	1'319'830	1'588'973	-16.9%
Total	8'159'948	9'772'226	-16.5%	5'380'927	6'290'098	-14.5%
Flights						
Europe	10'889	14'286	-23.8%	74'745	107'841	-30.7%
Intercontinental	1'332	1'771	-24.8%	9'461	12'196	-22.4%
Total	12'221	16'057	-23.9%	84'206	120'037	-29.8%
Available Seat km (ASK, in mill)						
Europe	725	850	-14.7%	4'956	6'435	-23.0%
Intercontinental	1'603	2'015	-20.4%	11'330	13'909	-18.5%
Total	2'328	2'865	-18.7%	16'286	20'343	-19.9%
Revenue Passenger km (RPK, in mill)						
Europe	477	575	-16.9%	3'029	3'631	-16.6%
Intercontinental	1'350	1'633	-17.3%	9'048	10'584	-14.5%
Total	1'827	2'207	-17.2%	12'076	14'215	-15.0%
Seat Load Factor (SLF %) ²⁾						
Europe	65.9%	67.6%	-1.7%	61.1%	56.4%	4.7%
Intercontinental	84.2%	81.0%	3.2%	79.9%	76.1%	3.8%
Total	78.5%	77.1%	1.4%	74.2%	69.9%	4.3%
Freight Load Factor (%) ³⁾						
Intercontinental	86.0%	83.7%	2.3%	85.9%	83.9%	2.0%
Freight Tonnes Kilometers (FTK, in 1000)						
Intercontinental	94'999	99'370	-4.4%	661'815	768'645	-13.9%

¹⁾ Revenue Passengers

²⁾ SLF = RPK / ASK
deviation in % pts

³⁾ Including mail
deviation in % pts

Traffic Statistics August 2004 LX Scheduled Services



Swiss
International
Air Lines

	August			Cumulative		
	2004	2003		2004	2003	
Number of Passengers ¹⁾						
Europe	6'119'58	7'361'17	-16.9%	4'673'055	5'437'242	-14.1%
Intercontinental	207'257	265'112	-21.8%	1'527'087	1'854'085	-17.6%
Total	8'192'15	10'001'229	-18.2%	6'200'142	7'291'327	-15.0%
Flights						
Europe	10'646	13'864	-23.2%	85'391	121'705	-29.8%
Intercontinental	1'333	1'803	-26.1%	10'794	13'999	-22.9%
Total	11'979	15'667	-23.5%	96'185	135'704	-29.1%
Available Seat km (ASK, in mill)						
Europe	727	847	-14.2%	5'682	7'282	-22.0%
Intercontinental	1'602	2'034	-21.2%	12'932	15'943	-18.9%
Total	2'329	2'881	-19.2%	18'615	23'224	-19.8%
Revenue Passenger km (RPK, in mill)						
Europe	480	592	-19.0%	3'508	4'223	-16.9%
Intercontinental	1'370	1'725	-20.6%	10'418	12'309	-15.4%
Total	1'850	2'317	-20.2%	13'926	16'531	-15.8%
Seat Load Factor (SLF %) ²⁾						
Europe	66.0%	69.9%	-3.9%	61.7%	58.0%	3.7%
Intercontinental	85.5%	84.8%	0.7%	80.6%	77.2%	3.4%
Total	79.4%	80.4%	-1.0%	74.8%	71.2%	3.6%
Freight Load Factor (%) ³⁾						
Intercontinental	84.6%	79.7%	4.9%	85.8%	83.4%	2.4%
Freight Tonnes Kilometers (FTK, in 1000)						
Intercontinental	92'368	97'449	-5.2%	754'183	866'094	-12.9%

¹⁾ Revenue Passengers

²⁾ SLF = RPK / ASK
deviation in % pts

³⁾ Including mail
deviation in % pts

Traffic Statistics September 2004 LX Scheduled Services



	September			Cumulative		
	2004	2003		2004	2003	
Number of Passengers ¹⁾						
Europe	6'18'408	7'11'750	-13.1%	5'291'463	6'148'992	-13.9%
Intercontinental	191'552	228'879	-16.3%	1'718'639	2'082'964	-17.5%
Total	809'960	940'629	-13.9%	7'010'102	8'231'956	-14.8%
Flights						
Europe	10'670	13'288	-19.7%	96'061	134'993	-28.8%
Intercontinental	1'277	1'676	-23.8%	12'071	15'675	-23.0%
Total	11'947	14'964	-20.2%	108'132	150'668	-28.2%
Available Seat km (ASK, in mill)						
Europe	709	811	-12.5%	6'392	8'092	-21.0%
Intercontinental	1'533	1'878	-18.4%	14'465	17'821	-18.8%
Total	2'242	2'689	-16.6%	20'856	25'913	-19.5%
Revenue Passenger km (RPK, in mill)						
Europe	463	553	-16.3%	3'971	4'776	-16.8%
Intercontinental	1'285	1'465	-12.3%	11'703	13'774	-15.0%
Total	1'748	2'018	-13.4%	15'674	18'549	-15.5%
Seat Load Factor (SLF %) ²⁾						
Europe	65.3%	68.2%	-2.9%	62.1%	59.0%	3.1%
Intercontinental	83.8%	78.0%	5.8%	80.9%	77.3%	3.6%
Total	78.0%	75.0%	3.0%	75.2%	71.6%	3.6%
Freight Load Factor (%) ³⁾						
Intercontinental	86.1%	85.2%	0.9%	85.8%	83.6%	2.2%
Freight Tonnes Kilometers (FTK, in 1000)						
Intercontinental	91'731	111'664	-17.9%	845'914	977'758	-13.5%

¹⁾ Revenue Passengers

²⁾ SLF = RPK / ASK
deviation in % pts

³⁾ Including mail
deviation in % pts

Traffic Statistics October 2004 LX Scheduled Services



	October			Cumulative		
	2004	2003		2004	2003	
Number of Passengers ¹⁾						
Europe	6'157'779	7'277'741	-15.4%	5'907'242	6'876'733	-14.1%
Intercontinental	199'213	238'261	-16.4%	1'917'852	2'321'225	-17.4%
Total	8'149'992	9'660'002	-15.6%	7'825'094	9'197'958	-14.9%
Flights						
Europe	10'902	12'801	-14.8%	106'963	147'794	-27.6%
Intercontinental	1'324	1'707	-22.4%	13'395	17'382	-22.9%
Total	12'226	14'508	-15.7%	120'358	165'176	-27.1%
Available Seat km (ASK, in mill)						
Europe	724	807	-10.3%	7'116	8'899	-20.0%
Intercontinental	1'599	1'960	-18.4%	16'064	19'781	-18.8%
Total	2'323	2'767	-16.0%	23'179	28'680	-19.2%
Revenue Passenger km (RPK, in mill)						
Europe	460	557	-17.4%	4'431	5'333	-16.9%
Intercontinental	1'345	1'601	-16.0%	13'047	15'375	-15.1%
Total	1'805	2'159	-16.4%	17'479	20'708	-15.6%
Seat Load Factor (SLF %) ²⁾						
Europe	63.6%	69.0%	-5.4%	62.3%	59.9%	2.4%
Intercontinental	84.1%	81.7%	2.4%	81.2%	77.7%	3.5%
Total	77.7%	78.0%	-0.3%	75.4%	72.2%	3.2%
Freight Load Factor (%) ³⁾						
Intercontinental	88.0%	85.5%	2.5%	86.0%	83.8%	2.2%
Freight Tonnes Kilometers (FTK, in 1000)						
Intercontinental	100'034	104'207	-4.0%	945'948	1'081'965	-12.6%

¹⁾ Revenue Passengers

²⁾ SLF = RPK / ASK
deviation in % pts

³⁾ Including mail
deviation in % pts

Traffic Statistics November 2004 LX Scheduled Services



Swiss
International
Air Lines

	November			Cumulative		
	2004	2003		2004	2003	
Number of Passengers ¹⁾						
Europe	492'037	533'209	-7.7%	6'399'279	7'409'942	-13.6%
Intercontinental	174'263	186'914	-6.8%	2'092'115	2'508'139	-16.6%
Total	666'300	720'123	-7.5%	8'491'394	9'918'081	-14.4%
Flights						
Europe	10'504	10'510	-0.1%	117'467	158'304	-25.8%
Intercontinental	1'278	1'417	-9.8%	14'673	18'799	-21.9%
Total	11'782	11'927	-1.2%	132'140	177'103	-25.4%
Available Seat km (ASK, in mill)						
Europe	689	691	-0.3%	7'804	9'590	-18.6%
Intercontinental	1'447	1'691	-14.4%	17'511	21'471	-18.4%
Total	2'136	2'382	-10.3%	25'315	31'062	-18.5%
Revenue Passenger km (RPK, in mill)						
Europe	351	392	-10.5%	4'782	5'725	-16.5%
Intercontinental	1'174	1'319	-11.0%	14'221	16'694	-14.8%
Total	1'525	1'711	-10.9%	19'004	22'419	-15.2%
Seat Load Factor (SLF %) ²⁾						
Europe	51.0%	56.8%	-5.8%	61.3%	59.7%	1.6%
Intercontinental	81.1%	78.0%	3.1%	81.2%	77.8%	3.4%
Total	71.4%	71.8%	-0.4%	75.1%	72.2%	2.9%
Estimate Freight Load Factor (%) ³⁾						
Intercontinental	89.0%	87.7%	1.3%	86.3%	84.2%	2.1%
Estimate Freight Tonnes Kilometers (FTK, in 1000)						
Intercontinental	96'111	98'420	-2.3%	1'042'059	1'180'385	-11.7%

¹⁾ Revenue Passengers

²⁾ SLF = RPK / ASK
deviation in % pts

³⁾ Including mail
deviation in % pts

Traffic Statistics December 2004 LX Scheduled Services



	December		Cumulative	
	2004	2003	2004	2003
Number of Passengers ¹⁾				
Europe	542'537		7'952'479	
Intercontinental	200'097		2'708'236	
Total	742'634		10'660'715	
Flights				
Europe	10'535		168'839	
Intercontinental	1'448		20'247	
Total	11'983		189'086	
Available Seat km (ASK, in mill)				
Europe	695		10'285	
Intercontinental	1'722		23'193	
Total	2'417		33'478	
Revenue Passenger km (RPK, in mill)				
Europe	403		6'128	
Intercontinental	1'401		18'095	
Total	1'804		24'223	
Seat Load Factor (SLF %) ²⁾				
Europe	58.1%		59.6%	
Intercontinental	81.3%		78.0%	
Total	74.6%		72.4%	
Freight Load Factor (%) ³⁾				
Intercontinental	86.7%		84.4%	
Freight Tonnes Kilometers (FTK, in 1000)				
Intercontinental	94'363		1'274'748	

¹⁾ Revenue Passengers

²⁾ SLF = RPK / ASK
deviation in % pts

³⁾ Including mail
deviation in % pts