

SWISS traffic figures

January to December 2004



SWISS reports improved seat load factor for 2004

SWISS recorded a seat load factor for 2004 as a whole of 74.9%, an improvement of 2.5 percentage points on the previous year's result. Seat load factor for intercontinental services rose 3.3 percentage points to 81.3%; and the 60.8% seat load factor reported for the European network was also a 1.2-percentage-point improvement on the previous year. SWISS carried some 9.2 million passengers in 2004. Seat load factor for December amounted to 73.5%, a slight 1.1 percentage points down on its 2003 equivalent. Cargo load factor for 2004 as a whole stood at 86.6%, a 2.2-percentage-point improvement on the previous year.

The modifications effected to the SWISS route network as part of the broader corporate restructuring in 2003 had a positive overall impact on the company's 2004 load factors. Average seat load factor for the year as a whole amounted to 74.9% – a 2.5-percentage-point improvement on the same figure for the previous year. The airline carried some 9.2 million passengers during the year. No meaningful comparison of absolute passenger figures can be made in view of the decrease in production resulting from adjustments to the route network. SWISS offered 17.9% fewer available seat kilometres (ASK) in 2004 than it had the previous year. But the associated year-on-year decline in revenue passenger kilometres (RPK) flown was limited to 15.0%. Seat load factor for the year improved accordingly. Seat load factor for December 2004 stood at 73.5%, a 1.1-percentage-point decline on the same month of the previous year.

Seat load factor for 2004 on *intercontinental services* amounted to 81.3%, up 3.3 percentage points on its prior-year equivalent. Available seat kilometre production was 18.1% down on 2003, while the decline in revenue seat kilometres flown was restricted to 14.7%.

The positive load factor trend that had persisted since March 2004 on the intercontinental network was maintained until the end of the year. The 81.8% December seat load factor for intercontinental services was an 0.5-percentage-point increase on the prior-year period. Flights to and from the Far East posted a December seat load factor of 84.3%, up 1.3 percentage points. Services over the North Atlantic also reported a seat load factor of 84.3% for the month, a slight 0.6-percentage-point decline on December 2003. Flights to Africa showed a seat load factor of 77.4%, up 5.7 percentage points, while the 69.4% recorded for the Middle East was a slight 0.4-percentage-point decline on the prior-year period. December seat load factor on services to South America was 2.8 percentage points down on the previous year, but remained high at 85.2%.

Seat load factor for 2004 on *European services* amounted to 60.8%, an improvement of 1.2 percentage points on the previous year. While available seat kilometre capacity was 17.4% lower than for 2003, the associated decline in revenue passenger kilometres flown was stemmed to 15.7%.

The continuing strong pressure from competitors – especially from the low-cost carriers – had its impact on SWISS's European load factor performance in December, too. Seat load factor for the month amounted to 55.5%, down 2.6 percentage points on the same period in 2003. The decline was slighter than those which had been sustained in the summer and autumn months; but SWISS has not yet achieved the desired reversal of the trend here. On a brighter note, additional passenger volume was generated among European connecting passengers in December compared to previous months.

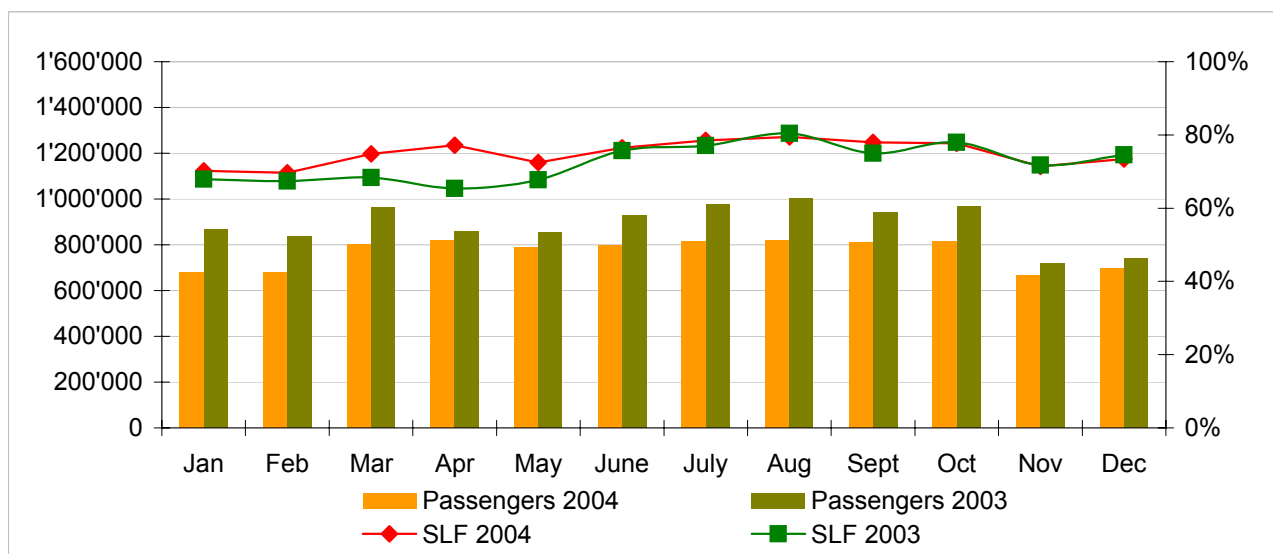
The cargo business of *Swiss WorldCargo* also showed positive overall trends for 2004. Cargo load factor (by volume) stood at 86.6% for the year, a year-on-year increase of 2.2 percentage points. Swiss WorldCargo's strategy of focusing consistently on niche product markets is clearly having a beneficial effect on business development and results.

Traffic Statistics January-December 2004 LX Scheduled Services



	Passengers Europe	Passengers Intercontinental	Passengers Total	SLF Europe	SLF Intercontinental	SLF Total
Jan	488'989	190'710	679'699	51.5%	77.8%	70.2%
Feb	504'960	173'962	678'922	54.6%	75.9%	69.6%
Mar	602'964	198'178	801'142	60.3%	81.1%	74.8%
Apr	629'871	189'881	819'752	66.8%	81.9%	77.2%
May	606'582	182'270	788'852	62.8%	76.8%	72.5%
Jun	610'949	185'663	796'612	65.4%	81.5%	76.5%
Jul	616'782	199'166	815'948	65.9%	84.2%	78.5%
Aug	611'958	207'257	819'215	66.0%	85.5%	79.4%
Sep	618'408	191'552	809'960	65.3%	83.8%	78.0%
Oct	615'779	199'213	814'992	63.6%	84.1%	77.7%
Nov	492'037	174'263	666'300	51.0%	81.1%	71.4%
Dec	516'269	180'093	696'362	55.5%	81.8%	73.5%

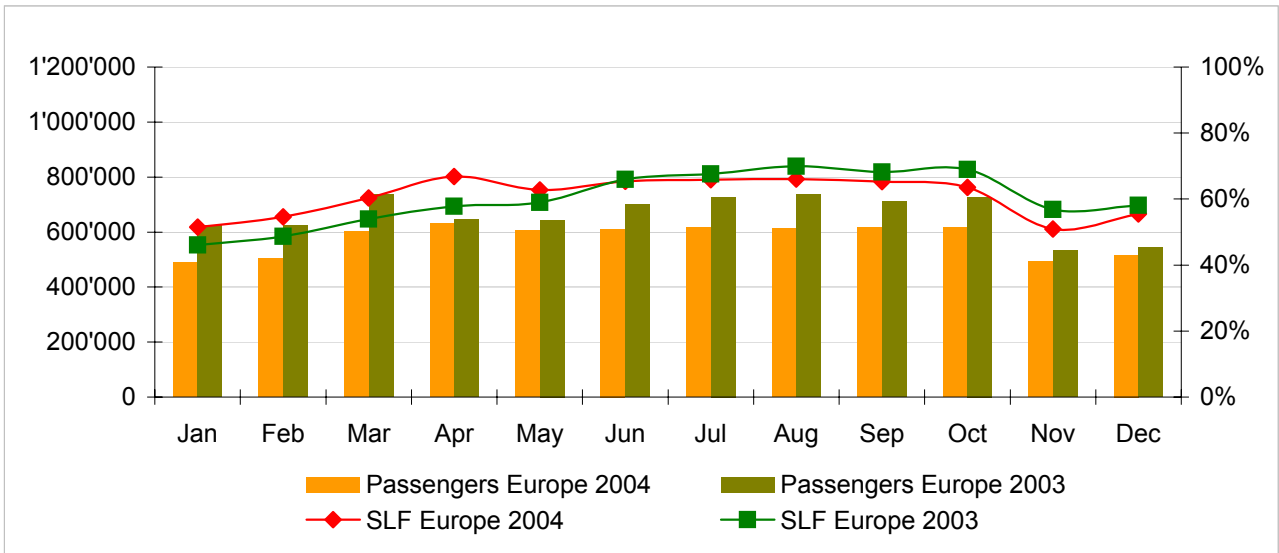
Comparison Passengers and Seat Load Factor (SLF %) versus prior year



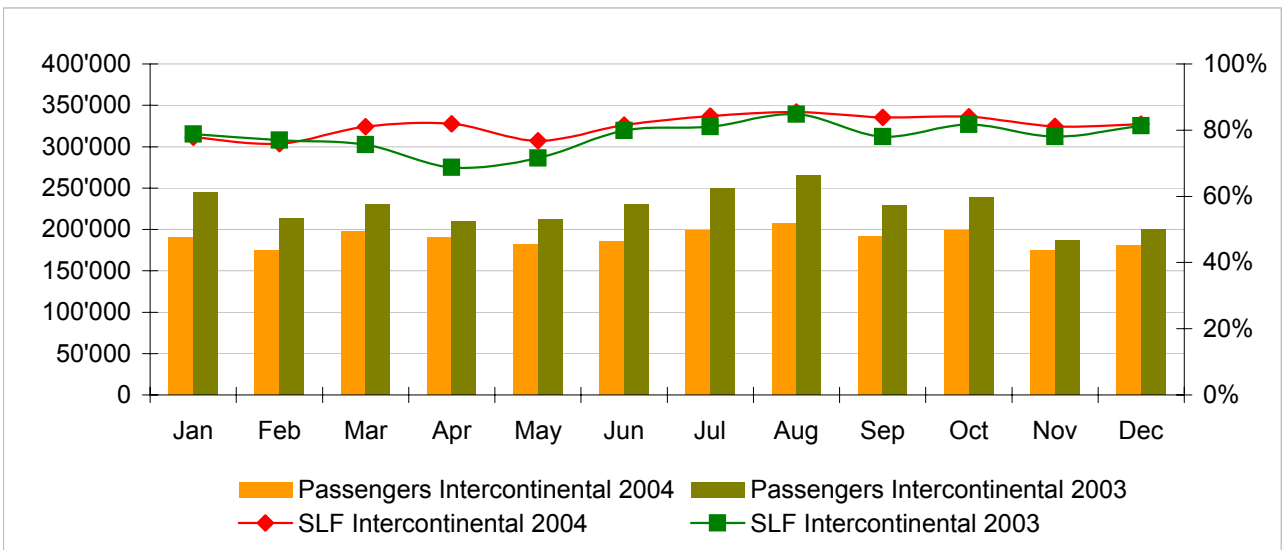
Next updates:

- January 05 figures February 10th, 2005
- February 05 figures March 10th, 2005
- March 05 figures April 12th, 2005

Passengers and Seat Load Factor (SLF %) European Routes
Comparison versus prior year



Passengers and Seat Load Factor (SLF %) Intercontinental Routes
Comparison versus prior year



Traffic Statistics January 2004 LX Scheduled Services



Swiss
International
Air Lines

	January			Cumulative		
	2004	2003		2004	2003	
Number of Passengers ¹⁾						
Europe	488'989	623'788	-21.6%	488'989	623'788	-21.6%
Intercontinental	190'710	245'067	-22.2%	190'710	245'067	-22.2%
Total	679'699	868'855	-21.8%	679'699	868'855	-21.8%
Flights						
Europe	10'640	17'314	-38.5%	10'640	17'314	-38.5%
Intercontinental	1'446	1'836	-21.2%	1'446	1'836	-21.2%
Total	12'086	19'150	-36.9%	12'086	19'150	-36.9%
Available Seat km (ASK, in mill)						
Europe	703	1'043	-32.6%	703	1'043	-32.6%
Intercontinental	1'724	2'094	-17.7%	1'724	2'094	-17.7%
Total	2'427	3'136	-22.6%	2'427	3'136	-22.6%
Revenue Passenger km (RPK, in mill)						
Europe	362	480	-24.6%	362	480	-24.6%
Intercontinental	1'341	1'651	-18.7%	1'341	1'651	-18.7%
Total	1'704	2'131	-20.1%	1'704	2'131	-20.1%
Seat Load Factor (SLF %) ²⁾						
Europe	51.5%	46.1%	5.4%	51.5%	46.1%	5.4%
Intercontinental	77.8%	78.9%	-1.0%	77.8%	78.9%	-1.0%
Total	70.2%	68.0%	2.2%	70.2%	68.0%	2.2%
Freight Load Factor (%) ³⁾						
Intercontinental	80.0%	77.9%	2.1%	80.0%	77.9%	2.1%
Freight Tonnes Kilometers (FTK, in 1000)						
Intercontinental	85'117	106'301	-19.9%	85'117	106'301	-19.9%

¹⁾ Revenue Passengers

²⁾ SLF = RPK / ASK
deviation in % pts

³⁾ Including mail
deviation in % pts

Traffic Statistics February 2004 LX Scheduled Services



Swiss
International
Air Lines

	February			Cumulative		
	2004	2003		2004	2003	
Number of Passengers ¹⁾						
Europe	504'960	622'717	-18.9%	993'949	1'246'505	-20.3%
Intercontinental	173'962	212'633	-18.2%	364'672	457'700	-20.3%
Total	678'922	835'350	-18.7%	1'358'621	1'704'205	-20.3%
Flights						
Europe	10'149	16'171	-37.2%	20'789	33'485	-37.9%
Intercontinental	1'352	1'642	-17.7%	2'798	3'478	-19.6%
Total	11'501	17'813	-35.4%	23'587	36'963	-36.2%
Available Seat km (ASK, in mill)						
Europe	669	957	-30.1%	1'372	2'000	-31.4%
Intercontinental	1'603	1'875	-14.5%	3'327	3'968	-16.2%
Total	2'272	2'832	-19.8%	4'699	5'968	-21.3%
Revenue Passenger km (RPK, in mill)						
Europe	365	466	-21.7%	727	947	-23.2%
Intercontinental	1'217	1'443	-15.7%	2'558	3'094	-17.3%
Total	1'582	1'910	-17.2%	3'285	4'041	-18.7%
Seat Load Factor (SLF %) ²⁾						
Europe	54.6%	48.7%	5.9%	53.0%	47.3%	5.7%
Intercontinental	75.9%	77.0%	-1.1%	76.9%	78.0%	-1.1%
Total	69.6%	67.4%	2.2%	69.9%	67.7%	2.2%
Freight Load Factor (%) ³⁾						
Intercontinental	90.0%	86.0%	4.0%	85.0%	82.0%	3.0%
Freight Tonnes Kilometers (FTK, in 1000)						
Intercontinental	97'771	108'934	-10.2%	182'888	215'235	-15.0%

¹⁾ Revenue Passengers

²⁾ SLF = RPK / ASK
deviation in % pts

³⁾ Including mail
deviation in % pts

Traffic Statistics March 2004 LX Scheduled Services



Swiss
International
Air Lines

	March			Cumulative		
	2004	2003		2004	2003	
Number of Passengers ¹⁾						
Europe	602'964	735'116	-18.0%	1'596'913	1'981'621	-19.4%
Intercontinental	198'178	230'492	-14.0%	562'850	688'192	-18.2%
Total	801'142	965'608	-17.0%	2'159'763	2'669'813	-19.1%
Flights						
Europe	10'988	17'770	-38.2%	31'777	51'255	-38.0%
Intercontinental	1'419	1'819	-22.0%	4'217	5'297	-20.4%
Total	12'407	19'589	-36.7%	35'994	56'552	-36.4%
Available Seat km (ASK, in mill)						
Europe	729	1'044	-30.2%	2'101	3'044	-31.0%
Intercontinental	1'686	2'087	-19.2%	5'012	6'056	-17.2%
Total	2'414	3'132	-22.9%	7'113	9'100	-21.8%
Revenue Passenger km (RPK, in mill)						
Europe	440	563	-22.0%	1'167	1'510	-22.7%
Intercontinental	1'367	1'578	-13.4%	3'925	4'672	-16.0%
Total	1'806	2'141	-15.7%	5'092	6'182	-17.6%
Seat Load Factor (SLF %) ²⁾						
Europe	60.3%	54.0%	6.3%	55.5%	49.6%	5.9%
Intercontinental	81.1%	75.6%	5.5%	78.3%	77.2%	1.1%
Total	74.8%	68.4%	6.4%	71.6%	67.9%	3.7%
Freight Load Factor (%) ³⁾						
Intercontinental	91.0%	87.4%	3.6%	87.0%	83.8%	3.2%
Freight Tonnes Kilometers (FTK, in 1000)						
Intercontinental	104'478	120'393	-13.2%	287'366	335'628	-14.4%

¹⁾ Revenue Passengers

²⁾ SLF = RPK / ASK
deviation in % pts

³⁾ Including mail
deviation in % pts

Traffic Statistics April 2004 LX Scheduled Services



Swiss
International
Air Lines

	April			Cumulative		
	2004	2003		2004	2003	
Number of Passengers ¹⁾						
Europe	629'871	647'474	-2.7%	2'226'784	2'629'095	-15.3%
Intercontinental	189'881	209'610	-9.4%	752'731	897'802	-16.2%
Total	819'752	857'084	-4.4%	2'979'515	3'526'897	-15.5%
Flights						
Europe	10'622	14'025	-24.3%	42'399	65'280	-35.1%
Intercontinental	1'299	1'727	-24.8%	5'516	7'024	-21.5%
Total	11'921	15'752	-24.3%	47'915	72'304	-33.7%
Available Seat km (ASK, in mill)						
Europe	705	867	-18.7%	2'806	3'911	-28.3%
Intercontinental	1'561	2'010	-22.3%	6'573	8'066	-18.5%
Total	2'266	2'877	-21.2%	9'379	11'977	-21.7%
Revenue Passenger km (RPK, in mill)						
Europe	471	501	-6.0%	1'638	2'011	-18.5%
Intercontinental	1'278	1'381	-7.5%	5'203	6'054	-14.1%
Total	1'749	1'882	-7.1%	6'841	8'065	-15.2%
Seat Load Factor (SLF %) ²⁾						
Europe	66.8%	57.8%	9.0%	58.4%	51.4%	7.0%
Intercontinental	81.9%	68.7%	13.2%	79.2%	75.1%	4.1%
Total	77.2%	65.4%	11.8%	72.9%	67.3%	5.6%
Freight Load Factor (%) ³⁾						
Intercontinental	83.0%	82.6%	0.4%	86.0%	83.5%	2.5%
Freight Tonnes Kilometers (FTK, in 1000)						
Intercontinental	88'759	116'773	-24.0%	376'125	452'401	-16.9%

¹⁾ Revenue Passengers

²⁾ SLF = RPK / ASK
deviation in % pts

³⁾ Including mail
deviation in % pts

Traffic Statistics May 2004 LX Scheduled Services



Swiss
International
Air Lines

	May			Cumulative		
	2004	2003		2004	2003	
Number of Passengers ¹⁾						
Europe	606'582	643'856	-5.8%	2'833'366	3'272'951	-13.4%
Intercontinental	182'270	211'550	-13.8%	935'001	1'109'352	-15.7%
Total	788'852	855'406	-7.8%	3'768'367	4'382'303	-14.0%
Flights						
Europe	10'883	14'297	-23.9%	53'282	79'577	-33.0%
Intercontinental	1'331	1'715	-22.4%	6'847	8'739	-21.7%
Total	12'214	16'012	-23.7%	60'129	88'316	-31.9%
Available Seat km (ASK, in mill)						
Europe	718	846	-15.1%	3'524	4'757	-25.9%
Intercontinental	1'607	1'936	-17.0%	8'180	10'002	-18.2%
Total	2'325	2'782	-16.4%	11'704	14'759	-20.7%
Revenue Passenger km (RPK, in mill)						
Europe	451	499	-9.6%	2'089	2'510	-16.8%
Intercontinental	1'234	1'386	-11.0%	6'437	7'440	-13.5%
Total	1'685	1'885	-10.6%	8'526	9'950	-14.3%
Seat Load Factor (SLF %) ²⁾						
Europe	62.8%	59.0%	3.8%	59.3%	52.8%	6.5%
Intercontinental	76.8%	71.6%	5.2%	78.7%	74.4%	4.3%
Total	72.5%	67.7%	4.8%	72.8%	67.4%	5.4%
Freight Load Factor (%) ³⁾						
Intercontinental	84.7%	85.5%	-0.8%	85.7%	83.9%	1.8%
Freight Tonnes Kilometers (FTK, in 1000)						
Intercontinental	95'309	110'594	-13.8%	471'434	562'995	-16.3%

¹⁾ Revenue Passengers

²⁾ SLF = RPK / ASK
deviation in % pts

³⁾ Including mail
deviation in % pts

Traffic Statistics June 2004 LX Scheduled Services



Swiss
International
Air Lines

	June			Cumulative		
	2004	2003		2004	2003	
Number of Passengers ¹⁾						
Europe	6'10'949	7'00'468	-12.8%	3'444'315	3'973'419	-13.3%
Intercontinental	185'663	230'101	-19.3%	1'120'664	1'339'453	-16.3%
Total	796'612	930'569	-14.4%	4'564'979	5'312'872	-14.1%
Flights						
Europe	10'574	13'978	-24.4%	63'856	93'555	-31.7%
Intercontinental	1'282	1'686	-24.0%	8'129	10'425	-22.0%
Total	11'856	15'664	-24.3%	71'985	103'980	-30.8%
Available Seat km (ASK, in mill)						
Europe	707	828	-14.6%	4'231	5'585	-24.2%
Intercontinental	1'547	1'892	-18.2%	9'727	11'894	-18.2%
Total	2'254	2'719	-17.1%	13'958	17'479	-20.1%
Revenue Passenger km (RPK, in mill)						
Europe	462	546	-15.3%	2'551	3'056	-16.5%
Intercontinental	1'261	1'511	-16.5%	7'698	8'951	-14.0%
Total	1'724	2'057	-16.2%	10'249	12'007	-14.6%
Seat Load Factor (SLF %) ²⁾						
Europe	65.4%	66.0%	-0.6%	60.3%	54.7%	5.6%
Intercontinental	81.5%	79.9%	1.6%	79.1%	75.3%	3.8%
Total	76.5%	75.7%	0.8%	73.4%	68.7%	4.7%
Freight Load Factor (%) ³⁾						
Intercontinental	86.9%	84.5%	2.4%	85.9%	84.0%	1.9%
Freight Tonnes Kilometers (FTK, in 1000)						
Intercontinental	95'382	106'280	-10.3%	566'816	669'275	-15.3%

¹⁾ Revenue Passengers

²⁾ SLF = RPK / ASK
deviation in % pts

³⁾ Including mail
deviation in % pts

Traffic Statistics July 2004 LX Scheduled Services



Swiss
International
Air Lines

	July			Cumulative		
	2004	2003		2004	2003	
Number of Passengers ¹⁾						
Europe	6'16'782	727'706	-15.2%	4'061'097	4'701'125	-13.6%
Intercontinental	199'166	249'520	-20.2%	1'319'830	1'588'973	-16.9%
Total	815'948	977'226	-16.5%	5'380'927	6'290'098	-14.5%
Flights						
Europe	10'889	14'286	-23.8%	74'745	107'841	-30.7%
Intercontinental	1'332	1'771	-24.8%	9'461	12'196	-22.4%
Total	12'221	16'057	-23.9%	84'206	120'037	-29.8%
Available Seat km (ASK, in mill)						
Europe	725	850	-14.7%	4'956	6'435	-23.0%
Intercontinental	1'603	2'015	-20.4%	11'330	13'909	-18.5%
Total	2'328	2'865	-18.7%	16'286	20'343	-19.9%
Revenue Passenger km (RPK, in mill)						
Europe	477	575	-16.9%	3'029	3'631	-16.6%
Intercontinental	1'350	1'633	-17.3%	9'048	10'584	-14.5%
Total	1'827	2'207	-17.2%	12'076	14'215	-15.0%
Seat Load Factor (SLF %) ²⁾						
Europe	65.9%	67.6%	-1.7%	61.1%	56.4%	4.7%
Intercontinental	84.2%	81.0%	3.2%	79.9%	76.1%	3.8%
Total	78.5%	77.1%	1.4%	74.2%	69.9%	4.3%
Freight Load Factor (%) ³⁾						
Intercontinental	86.0%	83.7%	2.3%	85.9%	83.9%	2.0%
Freight Tonnes Kilometers (FTK, in 1000)						
Intercontinental	94'999	99'370	-4.4%	661'815	768'645	-13.9%

¹⁾ Revenue Passengers

²⁾ SLF = RPK / ASK
deviation in % pts

³⁾ Including mail
deviation in % pts

Traffic Statistics August 2004 LX Scheduled Services



Swiss
International
Air Lines

	August			Cumulative		
	2004	2003		2004	2003	
Number of Passengers ¹⁾						
Europe	6'119'58	7'361'17	-16.9%	4'673'055	5'437'242	-14.1%
Intercontinental	207'257	265'112	-21.8%	1'527'087	1'854'085	-17.6%
Total	8'192'15	10'012'29	-18.2%	6'200'142	7'291'327	-15.0%
Flights						
Europe	10'646	13'864	-23.2%	85'391	121'705	-29.8%
Intercontinental	1'333	1'803	-26.1%	10'794	13'999	-22.9%
Total	11'979	15'667	-23.5%	96'185	135'704	-29.1%
Available Seat km (ASK, in mill)						
Europe	727	847	-14.2%	5'682	7'282	-22.0%
Intercontinental	1'602	2'034	-21.2%	12'932	15'943	-18.9%
Total	2'329	2'881	-19.2%	18'615	23'224	-19.8%
Revenue Passenger km (RPK, in mill)						
Europe	480	592	-19.0%	3'508	4'223	-16.9%
Intercontinental	1'370	1'725	-20.6%	10'418	12'309	-15.4%
Total	1'850	2'317	-20.2%	13'926	16'531	-15.8%
Seat Load Factor (SLF %) ²⁾						
Europe	66.0%	69.9%	-3.9%	61.7%	58.0%	3.7%
Intercontinental	85.5%	84.8%	0.7%	80.6%	77.2%	3.4%
Total	79.4%	80.4%	-1.0%	74.8%	71.2%	3.6%
Freight Load Factor (%) ³⁾						
Intercontinental	84.6%	79.7%	4.9%	85.8%	83.4%	2.4%
Freight Tonnes Kilometers (FTK, in 1000)						
Intercontinental	92'368	97'449	-5.2%	754'183	866'094	-12.9%

¹⁾ Revenue Passengers

²⁾ SLF = RPK / ASK
deviation in % pts

³⁾ Including mail
deviation in % pts

Traffic Statistics September 2004 LX Scheduled Services



Swiss
International
Air Lines

	September			Cumulative		
	2004	2003		2004	2003	
Number of Passengers ¹⁾						
Europe	6'18'408	7'11'750	-13.1%	5'291'463	6'148'992	-13.9%
Intercontinental	191'552	228'879	-16.3%	1'718'639	2'082'964	-17.5%
Total	809'960	940'629	-13.9%	7'010'102	8'231'956	-14.8%
Flights						
Europe	10'670	13'288	-19.7%	96'061	134'993	-28.8%
Intercontinental	1'277	1'676	-23.8%	12'071	15'675	-23.0%
Total	11'947	14'964	-20.2%	108'132	150'668	-28.2%
Available Seat km (ASK, in mill)						
Europe	709	811	-12.5%	6'392	8'092	-21.0%
Intercontinental	1'533	1'878	-18.4%	14'465	17'821	-18.8%
Total	2'242	2'689	-16.6%	20'856	25'913	-19.5%
Revenue Passenger km (RPK, in mill)						
Europe	463	553	-16.3%	3'971	4'776	-16.8%
Intercontinental	1'285	1'465	-12.3%	11'703	13'774	-15.0%
Total	1'748	2'018	-13.4%	15'674	18'549	-15.5%
Seat Load Factor (SLF %) ²⁾						
Europe	65.3%	68.2%	-2.9%	62.1%	59.0%	3.1%
Intercontinental	83.8%	78.0%	5.8%	80.9%	77.3%	3.6%
Total	78.0%	75.0%	3.0%	75.2%	71.6%	3.6%
Freight Load Factor (%) ³⁾						
Intercontinental	86.1%	85.2%	0.9%	85.8%	83.6%	2.2%
Freight Tonnes Kilometers (FTK, in 1000)						
Intercontinental	91'731	111'664	-17.9%	845'914	977'758	-13.5%

¹⁾ Revenue Passengers

²⁾ SLF = RPK / ASK
deviation in % pts

³⁾ Including mail
deviation in % pts

Traffic Statistics October 2004 LX Scheduled Services



Swiss
International
Air Lines

	October			Cumulative		
	2004	2003		2004	2003	
Number of Passengers ¹⁾						
Europe	6'157'779	7'277'741	-15.4%	5'907'242	6'876'733	-14.1%
Intercontinental	199'213	238'261	-16.4%	1'917'852	2'321'225	-17.4%
Total	8'149'992	9'660'002	-15.6%	7'825'094	9'197'958	-14.9%
Flights						
Europe	10'902	12'801	-14.8%	106'963	147'794	-27.6%
Intercontinental	1'324	1'707	-22.4%	13'395	17'382	-22.9%
Total	12'226	14'508	-15.7%	120'358	165'176	-27.1%
Available Seat km (ASK, in mill)						
Europe	724	807	-10.3%	7'116	8'899	-20.0%
Intercontinental	1'599	1'960	-18.4%	16'064	19'781	-18.8%
Total	2'323	2'767	-16.0%	23'179	28'680	-19.2%
Revenue Passenger km (RPK, in mill)						
Europe	460	557	-17.4%	4'431	5'333	-16.9%
Intercontinental	1'345	1'601	-16.0%	13'047	15'375	-15.1%
Total	1'805	2'159	-16.4%	17'479	20'708	-15.6%
Seat Load Factor (SLF %) ²⁾						
Europe	63.6%	69.0%	-5.4%	62.3%	59.9%	2.4%
Intercontinental	84.1%	81.7%	2.4%	81.2%	77.7%	3.5%
Total	77.7%	78.0%	-0.3%	75.4%	72.2%	3.2%
Freight Load Factor (%) ³⁾						
Intercontinental	88.0%	85.5%	2.5%	86.0%	83.8%	2.2%
Freight Tonnes Kilometers (FTK, in 1000)						
Intercontinental	100'034	104'207	-4.0%	945'948	1'081'965	-12.6%

¹⁾ Revenue Passengers

²⁾ SLF = RPK / ASK
deviation in % pts

³⁾ Including mail
deviation in % pts

Traffic Statistics November 2004 LX Scheduled Services



Swiss
International
Air Lines

	November			Cumulative		
	2004	2003		2004	2003	
Number of Passengers ¹⁾						
Europe	492'037	533'209	-7.7%	6'399'279	7'409'942	-13.6%
Intercontinental	174'263	186'914	-6.8%	2'092'115	2'508'139	-16.6%
Total	666'300	720'123	-7.5%	8'491'394	9'918'081	-14.4%
Flights						
Europe	10'504	10'510	-0.1%	117'467	158'304	-25.8%
Intercontinental	1'278	1'417	-9.8%	14'673	18'799	-21.9%
Total	11'782	11'927	-1.2%	132'140	177'103	-25.4%
Available Seat km (ASK, in mill)						
Europe	689	691	-0.3%	7'804	9'590	-18.6%
Intercontinental	1'447	1'691	-14.4%	17'511	21'471	-18.4%
Total	2'136	2'382	-10.3%	25'315	31'062	-18.5%
Revenue Passenger km (RPK, in mill)						
Europe	351	392	-10.5%	4'782	5'725	-16.5%
Intercontinental	1'174	1'319	-11.0%	14'221	16'694	-14.8%
Total	1'525	1'711	-10.9%	19'004	22'419	-15.2%
Seat Load Factor (SLF %) ²⁾						
Europe	51.0%	56.8%	-5.8%	61.3%	59.7%	1.6%
Intercontinental	81.1%	78.0%	3.1%	81.2%	77.8%	3.4%
Total	71.4%	71.8%	-0.4%	75.1%	72.2%	2.9%
Freight Load Factor (%) ³⁾						
Intercontinental	88.5%	87.7%	0.8%	86.3%	84.2%	2.1%
Freight Tonnes Kilometers (FTK, in 1000)						
Intercontinental	97'757	98'420	-0.7%	1'043'705	1'180'385	-11.6%

¹⁾ Revenue Passengers

²⁾ SLF = RPK / ASK
deviation in % pts

³⁾ Including mail
deviation in % pts

Traffic Statistics December 2004 LX Scheduled Services



Swiss
International
Air Lines

	December			Cumulative		
	2004	2003		2004	2003	
Number of Passengers ¹⁾						
Europe	516'269	542'537	-4.8%	6'915'548	7'952'479	-13.0%
Intercontinental	180'093	200'097	-10.0%	2'272'208	2'708'236	-16.1%
Total	696'362	742'634	-6.2%	9'187'756	10'660'715	-13.8%
Flights						
Europe	10'192	10'535	-3.3%	127'659	168'839	-24.4%
Intercontinental	1'318	1'448	-9.0%	15'991	20'247	-21.0%
Total	11'510	11'983	-3.9%	143'650	189'086	-24.0%
Available Seat km (ASK, in mill)						
Europe	688	695	-1.0%	8'492	10'285	-17.4%
Intercontinental	1'479	1'722	-14.1%	18'990	23'193	-18.1%
Total	2'167	2'417	-10.3%	27'483	33'478	-17.9%
Revenue Passenger km (RPK, in mill)						
Europe	381	403	-5.4%	5'164	6'128	-15.7%
Intercontinental	1'210	1'401	-13.6%	15'432	18'095	-14.7%
Total	1'592	1'804	-11.8%	20'596	24'223	-15.0%
Seat Load Factor (SLF %) ²⁾						
Europe	55.5%	58.1%	-2.6%	60.8%	59.6%	1.2%
Intercontinental	81.8%	81.3%	0.5%	81.3%	78.0%	3.3%
Total	73.5%	74.6%	-1.1%	74.9%	72.4%	2.5%
Estimate Freight Load Factor (%) ³⁾						
Intercontinental	90.0%	86.7%	3.3%	86.6%	84.4%	2.2%
Estimate Freight Tonnes Kilometers (FTK, in 1000)						
Intercontinental	91'535	91'513	0.0%	1'135'240	1'271'898	-10.7%

¹⁾ Revenue Passengers

²⁾ SLF = RPK / ASK
deviation in % pts

³⁾ Including mail
deviation in % pts