

SWISS traffic figures

January – December 2005



SWISS reports substantial 2005 increase in annual seat load factor

SWISS achieved an annual seat load factor for 2005 of 78.1%, a substantial 3.2-percentage-point improvement on the 74.9% recorded for the previous year. The increase was due to higher annual seat load factors on both intercontinental services (up 2.7 percentage points to 84.0%) and European routes (up 5.1 percentage points to 65.9%). Total passenger volume for 2005 stood at around 9.6 million, a 4.1% increase on the previous year. Systemwide seat load factor for December 2005 amounted to 74.9%, a 1.4-percentage-point improvement on the prior-year period.

The modifications to the route network, the schedule enhancements effected and the changes made to the aircraft fleet structure all had a positive impact on SWISS's seat load factors for 2005. The company's flights posted an average seat load factor of 78.1% for the year, a 3.2-percentage-point improvement on the prior-year result. Around 9.6 million passengers travelled with SWISS in 2005, a 4.1% increase on the previous year. While the company offered 4.7% less capacity year-on-year in available seat kilometre (ASK) terms, total traffic volume in revenue passenger kilometre (RPK) terms declined by only 0.6% over the same period. Annual seat load factor improved accordingly. Seat load factor for December 2005 amounted to 74.9%, up 1.4 percentage points on the same month in 2004.

SWISS's 2005 annual seat load factor on **intercontinental services** totalled 84.0%, 2.7 percentage points up on the previous year. While ASK capacity was down 6.8% from its prior-year-level, total RPK traffic volume declined by 3.6% – far less than the ASK reduction.

Intercontinental seat load factors showed positive trends for most of 2005. Slight declines were sustained with the start of the winter schedules in the fourth-quarter period, as a result of intensified competitive pressure on various routes. Seat load factor for December also slipped one percentage point to 80.8%. December Far East services saw a 1.1-percentage-point seat load factor improvement to 85.4%. North Atlantic services for the month generated a seat load factor of 82.4%, a 1.9-percentage-point decline on December 2004. Monthly seat load factor for African services sustained a 5.2-percentage-point decline to 72.2%. Flights to the Middle East posted a 2.2-percentage-point improvement in seat load factor for the month, which stood at 71.6%. December services to South America reported a seat load factor of 84.5%, 0.7 percentage points down on their prior-year level.

Seat load factor on SWISS's **European services** recorded a 5.1-percentage-point year-on-year increase for 2005 and stood at 65.9%. With ASK capacity virtually unchanged (0.1% down) from 2004, the company generated a substantial 8.3% increase in RPK traffic volume.

SWISS's business drive in Europe also had a positive effect on seat load factor trends. While 8.2% fewer flights were operated than the previous year, total ASK capacity for 2005 was only 0.1% below its prior-year level. The use of larger-capacity aircraft and the corresponding reduction in unit costs per available seat kilometre provided SWISS with vital scope for responding to its intra-European competitors. These endeavours were reflected in seat load factor for December 2005, which, at 62.2%, was a 6.7-percentage-point improvement on the prior-year period.

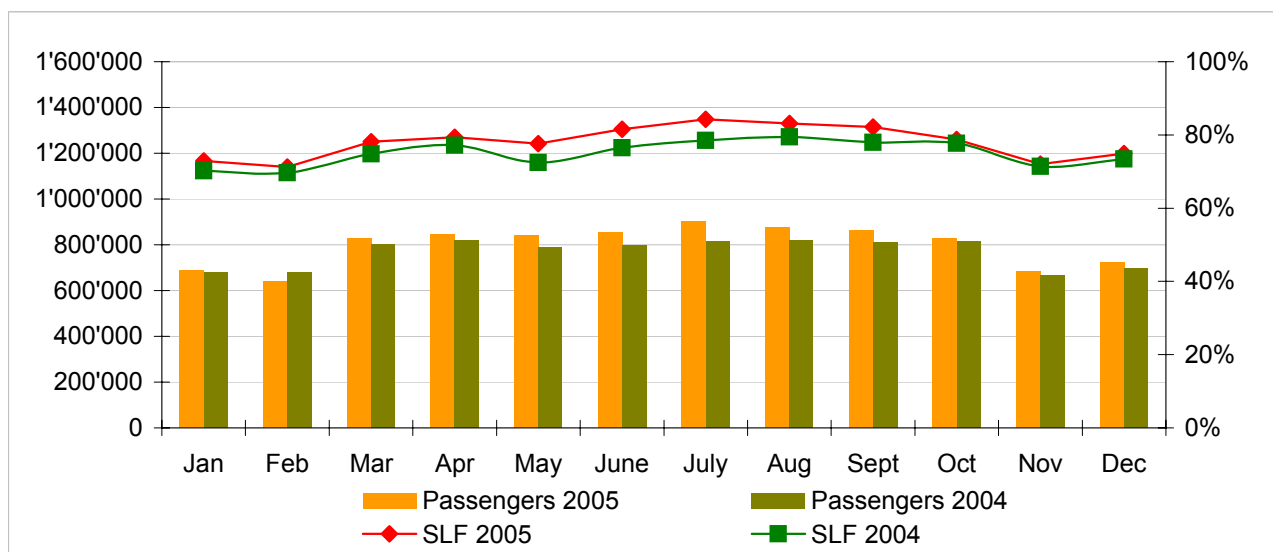
SWISS's **cargo business** continued to develop favourably overall in 2005, despite a tangible toughening of the competitive environment. Cargo load factor (by volume) remained stable at a high 86.5% (down 0.1 percentage points on 2004). The total cargo volume handled by Swiss WorldCargo amounted to around 1.14 billion cargo tonne-kilometres, an 0.5% improvement on the previous year.

Traffic Statistics January-December 2005 LX Scheduled Services



	Passengers Europe	Passengers Intercontinental	Passengers Total	SLF Europe	SLF Intercontinental	SLF Total
Jan	505'995	182'671	688'666	54.2%	81.6%	72.9%
Feb	484'640	154'540	639'180	55.6%	78.7%	71.2%
Mar	640'333	185'569	825'902	65.7%	84.2%	78.1%
Apr	654'672	188'133	842'805	67.8%	85.0%	79.4%
May	650'951	187'997	838'948	68.0%	82.2%	77.6%
Jun	661'327	191'291	852'618	70.0%	87.2%	81.5%
Jul	697'794	203'941	901'735	74.3%	89.2%	84.3%
Aug	672'321	204'009	876'330	71.5%	88.8%	83.1%
Sep	670'187	193'612	863'799	71.3%	87.4%	82.2%
Oct	642'720	186'384	829'104	68.2%	83.7%	78.8%
Nov	520'531	163'875	684'406	58.5%	78.4%	72.1%
Dec	548'480	172'533	721'013	62.2%	80.8%	74.9%

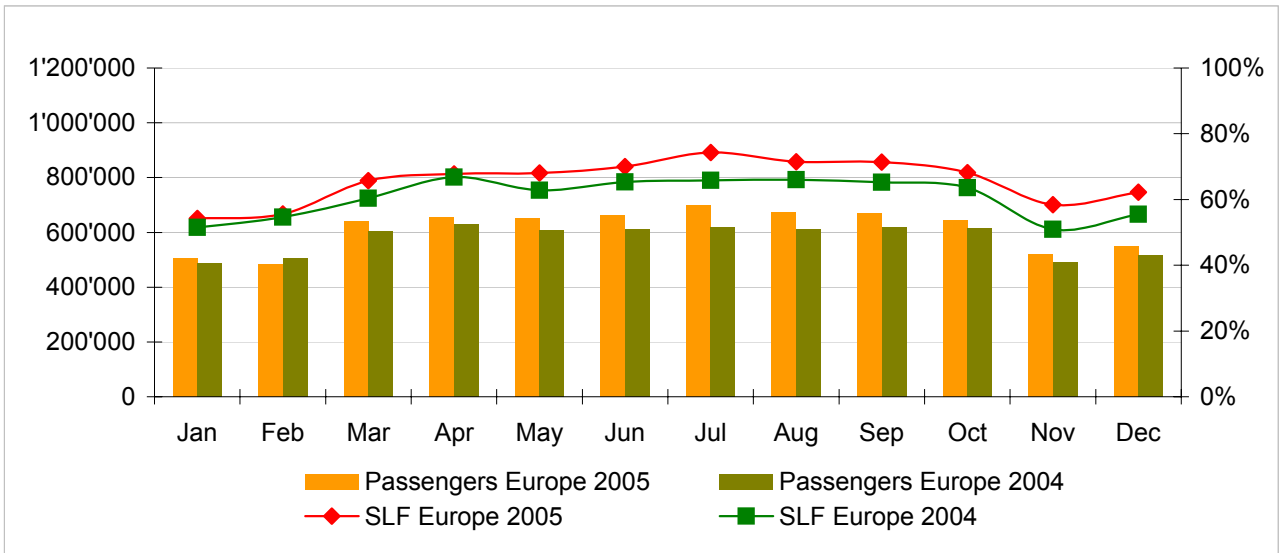
Comparison Passengers and Seat Load Factor (SLF %) versus prior year



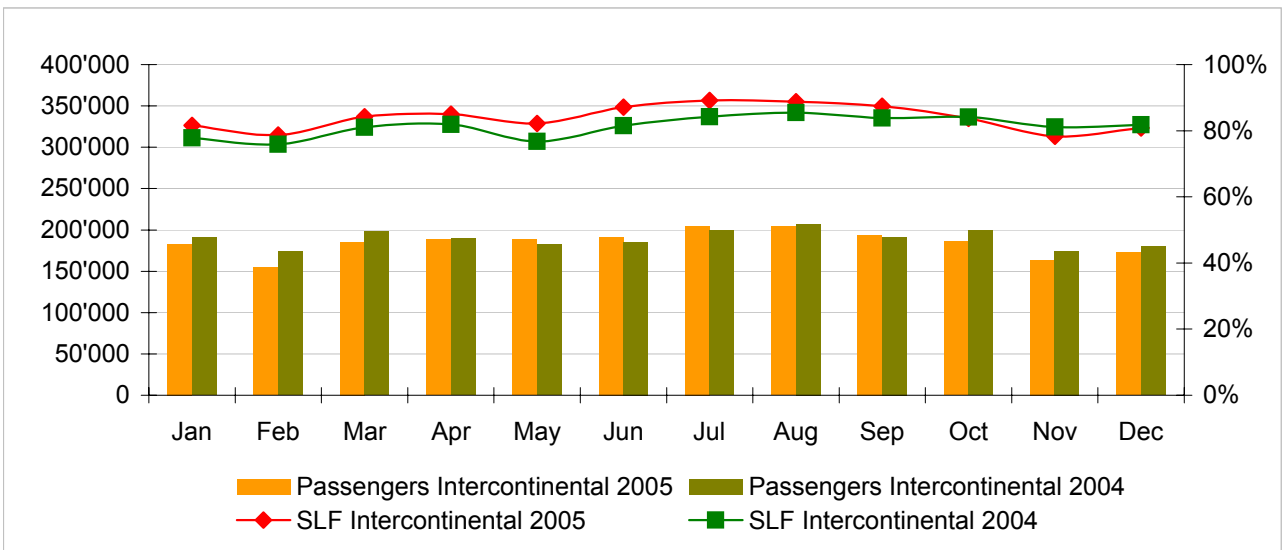
Next updates:

- January 06 figures February 9, 2006
- February 06 figures March 9, 2006
- March 06 figures April 11, 2006

Passengers and Seat Load Factor (SLF %) European Routes
Comparison versus prior year



Passengers and Seat Load Factor (SLF %) Intercontinental Routes
Comparison versus prior year



Traffic Statistics January 2005 LX Scheduled Services



Swiss
International
Air Lines

	January			Cumulative		
	2005	2004		2005	2004	
Number of Passengers ¹⁾						
Europe	505'995	488'989	3.5%	505'995	488'989	3.5%
Intercontinental	182'671	190'710	-4.2%	182'671	190'710	-4.2%
Total	688'666	679'699	1.3%	688'666	679'699	1.3%
Flights						
Europe	10'241	10'640	-3.8%	10'241	10'640	-3.8%
Intercontinental	1'366	1'446	-5.5%	1'366	1'446	-5.5%
Total	11'607	12'086	-4.0%	11'607	12'086	-4.0%
Available Seat km (ASK, in mill)						
Europe	690	703	-1.8%	690	703	-1.8%
Intercontinental	1'500	1'724	-13.0%	1'500	1'724	-13.0%
Total	2'190	2'427	-9.8%	2'190	2'427	-9.8%
Revenue Passenger km (RPK, in mill)						
Europe	374	362	3.3%	374	362	3.3%
Intercontinental	1'223	1'341	-8.8%	1'223	1'341	-8.8%
Total	1'597	1'704	-6.2%	1'597	1'704	-6.2%
Seat Load Factor (SLF %) ²⁾						
Europe	54.2%	51.5%	2.7%	54.2%	51.5%	2.7%
Intercontinental	81.6%	77.8%	3.8%	81.6%	77.8%	3.8%
Total	72.9%	70.2%	2.7%	72.9%	70.2%	2.7%
Freight Load Factor (%) ³⁾						
Intercontinental	82.4%	80.0%	2.4%	82.4%	80.0%	2.4%
Freight Tonnes Kilometers (FTK, in 1000)						
Intercontinental	89'097	85'117	4.7%	89'097	85'117	4.7%

¹⁾ Revenue Passengers

²⁾ SLF = RPK / ASK
deviation in % pts

³⁾ Including mail
deviation in % pts

Traffic Statistics February 2005 LX Scheduled Services



Swiss
International
Air Lines

	February			Cumulative		
	2005	2004		2005	2004	
Number of Passengers ¹⁾						
Europe	484'640	504'960	-4.0%	990'635	993'949	-0.3%
Intercontinental	154'540	173'962	-11.2%	337'211	364'672	-7.5%
Total	639'180	678'922	-5.9%	1'327'846	1'358'621	-2.3%
Flights						
Europe	9'511	10'149	-6.3%	19'752	20'789	-5.0%
Intercontinental	1'234	1'352	-8.7%	2'600	2'798	-7.1%
Total	10'745	11'501	-6.6%	22'352	23'587	-5.2%
Available Seat km (ASK, in mill)						
Europe	632	669	-5.6%	1'322	1'372	-3.7%
Intercontinental	1'314	1'603	-18.0%	2'814	3'327	-15.4%
Total	1'946	2'272	-14.3%	4'136	4'699	-12.0%
Revenue Passenger km (RPK, in mill)						
Europe	351	365	-3.9%	725	727	-0.3%
Intercontinental	1'035	1'217	-14.9%	2'258	2'558	-11.7%
Total	1'386	1'582	-12.4%	2'983	3'285	-9.2%
Seat Load Factor (SLF %) ²⁾						
Europe	55.6%	54.6%	1.0%	54.8%	53.0%	1.8%
Intercontinental	78.7%	75.9%	2.8%	80.2%	76.9%	3.3%
Total	71.2%	69.6%	1.6%	72.1%	69.9%	2.2%
Freight Load Factor (%) ³⁾						
Intercontinental	89.9%	90.0%	-0.1%	86.1%	85.0%	1.1%
Freight Tonnes Kilometers (FTK, in 1000)						
Intercontinental	89'653	97'771	-8.3%	178'750	182'888	-2.3%

¹⁾ Revenue Passengers

²⁾ SLF = RPK / ASK
deviation in % pts

³⁾ Including mail
deviation in % pts

Traffic Statistics March 2005 LX Scheduled Services



Swiss
International
Air Lines

	March			Cumulative		
	2005	2004		2005	2004	
Number of Passengers ¹⁾						
Europe	640'333	602'964	6.2%	1'630'968	1'596'913	2.1%
Intercontinental	185'569	198'178	-6.4%	522'780	562'850	-7.1%
Total	825'902	801'142	3.1%	2'153'748	2'159'763	-0.3%
Flights						
Europe	10'572	10'988	-3.8%	30'324	31'777	-4.6%
Intercontinental	1'385	1'419	-2.4%	3'985	4'217	-5.5%
Total	11'957	12'407	-3.6%	34'309	35'994	-4.7%
Available Seat km (ASK, in mill)						
Europe	725	729	-0.5%	2'047	2'101	-2.6%
Intercontinental	1'474	1'686	-12.5%	4'288	5'012	-14.4%
Total	2'199	2'414	-8.9%	6'336	7'113	-10.9%
Revenue Passenger km (RPK, in mill)						
Europe	477	440	8.4%	1'202	1'167	3.0%
Intercontinental	1'242	1'367	-9.1%	3'500	3'925	-10.8%
Total	1'719	1'806	-4.8%	4'702	5'092	-7.7%
Seat Load Factor (SLF %) ²⁾						
Europe	65.7%	60.3%	5.4%	58.7%	55.5%	3.2%
Intercontinental	84.2%	81.1%	3.1%	81.6%	78.3%	3.3%
Total	78.1%	74.8%	3.3%	74.2%	71.6%	2.6%
Freight Load Factor (%) ³⁾						
Intercontinental	89.0%	91.0%	-2.0%	87.1%	87.0%	0.1%
Freight Tonnes Kilometers (FTK, in 1000)						
Intercontinental	98'689	104'478	-5.5%	277'439	287'366	-3.5%

¹⁾ Revenue Passengers

²⁾ SLF = RPK / ASK
deviation in % pts

³⁾ Including mail
deviation in % pts

Traffic Statistics April 2005 LX Scheduled Services



Swiss
International
Air Lines

	April			Cumulative		
	2005	2004		2005	2004	
Number of Passengers ¹⁾						
Europe	654'672	629'871	3.9%	2'285'640	2'226'784	2.6%
Intercontinental	188'133	189'881	-0.9%	710'913	752'731	-5.6%
Total	842'805	819'752	2.8%	2'996'553	2'979'515	0.6%
Flights						
Europe	10'284	10'622	-3.2%	40'608	42'399	-4.2%
Intercontinental	1'385	1'299	6.6%	5'370	5'516	-2.6%
Total	11'669	11'921	-2.1%	45'978	47'915	-4.0%
Available Seat km (ASK, in mill)						
Europe	723	705	2.6%	2'770	2'806	-1.3%
Intercontinental	1'489	1'561	-4.6%	5'778	6'573	-12.1%
Total	2'212	2'266	-2.4%	8'548	9'379	-8.9%
Revenue Passenger km (RPK, in mill)						
Europe	490	471	4.0%	1'692	1'638	3.3%
Intercontinental	1'266	1'278	-1.0%	4'766	5'203	-8.4%
Total	1'756	1'749	0.4%	6'457	6'841	-5.6%
Seat Load Factor (SLF %) ²⁾						
Europe	67.8%	66.8%	1.0%	61.1%	58.4%	2.7%
Intercontinental	85.0%	81.9%	3.1%	82.5%	79.2%	3.3%
Total	79.4%	77.2%	2.2%	75.5%	72.9%	2.6%
Freight Load Factor (%) ³⁾						
Intercontinental	86.9%	83.0%	3.9%	87.0%	86.0%	1.0%
Freight Tonnes Kilometers (FTK, in 1000)						
Intercontinental	97'169	88'759	9.5%	374'608	376'125	-0.4%

¹⁾ Revenue Passengers

²⁾ SLF = RPK / ASK
deviation in % pts

³⁾ Including mail
deviation in % pts

Traffic Statistics May 2005 LX Scheduled Services



Swiss
International
Air Lines

	May			Cumulative		
	2005	2004		2005	2004	
Number of Passengers ¹⁾						
Europe	650'951	606'582	7.3%	2'936'591	2'833'366	3.6%
Intercontinental	187'997	182'270	3.1%	898'910	935'001	-3.9%
Total	838'948	788'852	6.4%	3'835'501	3'768'367	1.8%
Flights						
Europe	10'186	10'883	-6.4%	50'794	53'282	-4.7%
Intercontinental	1'427	1'331	7.2%	6'797	6'847	-0.7%
Total	11'613	12'214	-4.9%	57'591	60'129	-4.2%
Available Seat km (ASK, in mill)						
Europe	734	718	2.2%	3'505	3'524	-0.6%
Intercontinental	1'529	1'607	-4.8%	7'306	8'180	-10.7%
Total	2'263	2'325	-2.7%	10'811	11'704	-7.6%
Revenue Passenger km (RPK, in mill)						
Europe	500	451	10.8%	2'191	2'089	4.9%
Intercontinental	1'257	1'234	1.9%	6'022	6'437	-6.4%
Total	1'756	1'685	4.2%	8'214	8'526	-3.7%
Seat Load Factor (SLF %) ²⁾						
Europe	68.0%	62.8%	5.2%	62.5%	59.3%	3.2%
Intercontinental	82.2%	76.8%	5.4%	82.4%	78.7%	3.7%
Total	77.6%	72.5%	5.1%	76.0%	72.8%	3.2%
Freight Load Factor (%) ³⁾						
Intercontinental	83.5%	84.7%	-1.2%	86.2%	85.7%	0.5%
Freight Tonnes Kilometers (FTK, in 1000)						
Intercontinental	95'602	95'309	0.3%	470'210	471'434	-0.3%

¹⁾ Revenue Passengers

²⁾ SLF = RPK / ASK
deviation in % pts

³⁾ Including mail
deviation in % pts

Traffic Statistics June 2005 LX Scheduled Services



Swiss
International
Air Lines

	June			Cumulative		
	2005	2004		2005	2004	
Number of Passengers ¹⁾						
Europe	661'327	610'949	8.2%	3'597'918	3'444'315	4.5%
Intercontinental	191'291	185'663	3.0%	1'090'201	1'120'664	-2.7%
Total	852'618	796'612	7.0%	4'688'119	4'564'979	2.7%
Flights						
Europe	10'014	10'574	-5.3%	60'808	63'856	-4.8%
Intercontinental	1'376	1'282	7.3%	8'173	8'129	0.5%
Total	11'390	11'856	-3.9%	68'981	71'985	-4.2%
Available Seat km (ASK, in mill)						
Europe	725	707	2.5%	4'229	4'231	0.0%
Intercontinental	1'478	1'547	-4.4%	8'785	9'727	-9.7%
Total	2'203	2'254	-2.3%	13'014	13'958	-6.8%
Revenue Passenger km (RPK, in mill)						
Europe	508	462	9.8%	2'699	2'551	5.8%
Intercontinental	1'289	1'261	2.2%	7'311	7'698	-5.0%
Total	1'796	1'724	4.2%	10'010	10'249	-2.3%
Seat Load Factor (SLF %) ²⁾						
Europe	70.0%	65.4%	4.6%	63.8%	60.3%	3.5%
Intercontinental	87.2%	81.5%	5.7%	83.2%	79.1%	4.1%
Total	81.5%	76.5%	5.0%	76.9%	73.4%	3.5%
Freight Load Factor (%) ³⁾						
Intercontinental	84.9%	86.9%	-2.0%	86.0%	85.9%	0.1%
Freight Tonnes Kilometers (FTK, in 1000)						
Intercontinental	96'062	95'382	0.7%	566'272	566'816	-0.1%

¹⁾ Revenue Passengers

²⁾ SLF = RPK / ASK
deviation in % pts

³⁾ Including mail
deviation in % pts

Traffic Statistics July 2005 LX Scheduled Services



Swiss
International
Air Lines

	July			Cumulative		
	2005	2004		2005	2004	
Number of Passengers ¹⁾						
Europe	697'794	616'782	13.1%	4'295'712	4'061'097	5.8%
Intercontinental	203'941	199'166	2.4%	1'294'142	1'319'830	-1.9%
Total	901'735	815'948	10.5%	5'589'854	5'380'927	3.9%
Flights						
Europe	9'886	10'889	-9.2%	70'694	74'745	-5.4%
Intercontinental	1'424	1'332	6.9%	9'597	9'461	1.4%
Total	11'310	12'221	-7.5%	80'291	84'206	-4.6%
Available Seat km (ASK, in mill)						
Europe	748	725	3.2%	4'978	4'956	0.4%
Intercontinental	1'531	1'603	-4.5%	10'316	11'330	-9.0%
Total	2'279	2'328	-2.1%	15'293	16'286	-6.1%
Revenue Passenger km (RPK, in mill)						
Europe	556	477	16.4%	3'255	3'029	7.5%
Intercontinental	1'365	1'350	1.1%	8'676	9'048	-4.1%
Total	1'921	1'827	5.1%	11'931	12'076	-1.2%
Seat Load Factor (SLF %) ²⁾						
Europe	74.3%	65.9%	8.4%	65.4%	61.1%	4.3%
Intercontinental	89.2%	84.2%	5.0%	84.1%	79.9%	4.2%
Total	84.3%	78.5%	5.8%	78.0%	74.2%	3.8%
Freight Load Factor (%) ³⁾						
Intercontinental	85.4%	86.0%	-0.6%	85.9%	85.9%	0.0%
Freight Tonnes Kilometers (FTK, in 1000)						
Intercontinental	97'047	94'999	2.2%	663'319	661'815	0.2%

¹⁾ Revenue Passengers

²⁾ SLF = RPK / ASK
deviation in % pts

³⁾ Including mail
deviation in % pts

Traffic Statistics August 2005 LX Scheduled Services



Swiss
International
Air Lines

	August			Cumulative		
	2005	2004		2005	2004	
Number of Passengers ¹⁾						
Europe	672'321	611'958	9.9%	4'968'033	4'673'055	6.3%
Intercontinental	204'009	207'257	-1.6%	1'498'151	1'527'087	-1.9%
Total	876'330	819'215	7.0%	6'466'184	6'200'142	4.3%
Flights						
Europe	9'884	10'646	-7.2%	80'578	85'391	-5.6%
Intercontinental	1'420	1'333	6.5%	11'017	10'794	2.1%
Total	11'304	11'979	-5.6%	91'595	96'185	-4.8%
Available Seat km (ASK, in mill)						
Europe	755	727	3.9%	5'732	5'682	0.9%
Intercontinental	1'531	1'602	-4.4%	11'847	12'932	-8.4%
Total	2'286	2'329	-1.8%	17'579	18'615	-5.6%
Revenue Passenger km (RPK, in mill)						
Europe	540	480	12.5%	3'794	3'508	8.2%
Intercontinental	1'360	1'370	-0.7%	10'036	10'418	-3.7%
Total	1'899	1'850	2.7%	13'830	13'926	-0.7%
Seat Load Factor (SLF %) ²⁾						
Europe	71.5%	66.0%	5.5%	66.2%	61.7%	4.5%
Intercontinental	88.8%	85.5%	3.3%	84.7%	80.6%	4.1%
Total	83.1%	79.4%	3.7%	78.7%	74.8%	3.9%
Freight Load Factor (%) ³⁾						
Intercontinental	84.1%	84.6%	-0.1%	85.7%	85.8%	-0.1%
Freight Tonnes Kilometers (FTK, in 1000)						
Intercontinental	91'471	92'368	-1.0%	754'790	754'183	0.1%

¹⁾ Revenue Passengers

²⁾ SLF = RPK / ASK
deviation in % pts

³⁾ Including mail
deviation in % pts

Traffic Statistics September 2005 LX Scheduled Services



Swiss
International
Air Lines

	September			Cumulative		
	2005	2004		2005	2004	
Number of Passengers ¹⁾						
Europe	670'187	618'408	8.4%	5'638'220	5'291'463	6.6%
Intercontinental	193'612	191'552	1.1%	1'691'763	1'718'639	-1.6%
Total	863'799	809'960	6.6%	7'329'983	7'010'102	4.6%
Flights						
Europe	9'689	10'670	-9.2%	90'267	96'061	-6.0%
Intercontinental	1'386	1'277	8.5%	12'403	12'071	2.8%
Total	11'075	11'947	-7.3%	102'670	108'132	-5.1%
Available Seat km (ASK, in mill)						
Europe	717	709	1.1%	6'449	6'392	0.9%
Intercontinental	1'485	1'533	-3.1%	13'332	14'465	-7.8%
Total	2'202	2'242	-1.8%	19'781	20'856	-5.2%
Revenue Passenger km (RPK, in mill)						
Europe	511	463	10.5%	4'306	3'971	8.4%
Intercontinental	1'298	1'285	1.0%	11'334	11'703	-3.2%
Total	1'809	1'748	3.5%	15'640	15'674	-0.2%
Seat Load Factor (SLF %) ²⁾						
Europe	71.3%	65.3%	6.0%	66.8%	62.1%	4.7%
Intercontinental	87.4%	83.8%	3.6%	85.0%	80.9%	4.1%
Total	82.2%	78.0%	4.2%	79.1%	75.2%	3.9%
Freight Load Factor (%) ³⁾						
Intercontinental	87.7%	86.1%	1.6%	85.9%	85.8%	0.1%
Freight Tonnes Kilometers (FTK, in 1000)						
Intercontinental	96'214	91'731	4.9%	851'004	845'914	0.6%

¹⁾ Revenue Passengers

²⁾ SLF = RPK / ASK
deviation in % pts

³⁾ Including mail
deviation in % pts

Traffic Statistics October 2005 LX Scheduled Services



Swiss
International
Air Lines

	October			Cumulative		
	2005	2004		2005	2004	
Number of Passengers ¹⁾						
Europe	642'720	615'779	4.4%	6'280'940	5'907'242	6.3%
Intercontinental	186'384	199'213	-6.4%	1'878'147	1'917'852	-2.1%
Total	829'104	814'992	1.7%	8'159'087	7'825'094	4.3%
Flights						
Europe	9'720	10'902	-10.8%	99'987	106'963	-6.5%
Intercontinental	1'403	1'324	6.0%	13'806	13'395	3.1%
Total	11'123	12'226	-9.0%	113'793	120'358	-5.5%
Available Seat km (ASK, in mill)						
Europe	714	724	-1.4%	7'163	7'116	0.7%
Intercontinental	1'514	1'599	-5.3%	14'846	16'064	-7.6%
Total	2'228	2'323	-4.1%	22'010	23'179	-5.0%
Revenue Passenger km (RPK, in mill)						
Europe	487	460	5.8%	4'793	4'431	8.1%
Intercontinental	1'268	1'345	-5.7%	12'602	13'047	-3.4%
Total	1'755	1'805	-2.8%	17'394	17'479	-0.5%
Seat Load Factor (SLF %) ²⁾						
Europe	68.2%	63.6%	4.6%	66.9%	62.3%	4.6%
Intercontinental	83.7%	84.1%	-0.4%	84.9%	81.2%	3.7%
Total	78.8%	77.7%	1.1%	79.0%	75.4%	3.6%
Freight Load Factor (%) ³⁾						
Intercontinental	89.0%	88.0%	1.0%	86.2%	86.0%	0.2%
Freight Tonnes Kilometers (FTK, in 1000)						
Intercontinental	99'197	100'034	-0.8%	950'201	945'948	0.4%

¹⁾ Revenue Passengers

²⁾ SLF = RPK / ASK
deviation in % pts

³⁾ Including mail
deviation in % pts

Traffic Statistics November 2005 LX Scheduled Services



Swiss
International
Air Lines

	November			Cumulative		
	2005	2004		2005	2004	
Number of Passengers ¹⁾						
Europe	520'531	492'037	5.8%	6'801'471	6'399'279	6.3%
Intercontinental	163'875	174'263	-6.0%	2'042'022	2'092'115	-2.4%
Total	684'406	666'300	2.7%	8'843'493	8'491'394	4.1%
Flights						
Europe	8'619	10'504	-17.9%	108'606	117'467	-7.5%
Intercontinental	1'315	1'278	2.9%	15'121	14'673	3.1%
Total	9'934	11'782	-15.7%	123'727	132'140	-6.4%
Available Seat km (ASK, in mill)						
Europe	652	689	-5.4%	7'815	7'804	0.1%
Intercontinental	1'409	1'447	-2.7%	16'255	17'511	-7.2%
Total	2'061	2'136	-3.5%	24'070	25'315	-4.9%
Revenue Passenger km (RPK, in mill)						
Europe	381	351	8.6%	5'174	4'782	8.2%
Intercontinental	1'104	1'174	-6.0%	13'706	14'221	-3.6%
Total	1'485	1'525	-2.6%	18'879	19'004	-0.7%
Seat Load Factor (SLF %) ²⁾						
Europe	58.5%	51.0%	7.5%	66.2%	61.3%	4.9%
Intercontinental	78.4%	81.1%	-2.7%	84.3%	81.2%	3.1%
Total	72.1%	71.4%	0.7%	78.4%	75.1%	3.3%
Estimate Freight Load Factor (%) ³⁾						
Intercontinental	89.2%	88.5%	0.7%	86.5%	86.3%	0.2%
Estimate Freight Tonnes Kilometers (FTK, in 1000)						
Intercontinental	92'962	97'757	-4.9%	1'043'163	1'043'705	-0.1%

¹⁾ Revenue Passengers

²⁾ SLF = RPK / ASK
deviation in % pts

³⁾ Including mail
deviation in % pts

Traffic Statistics December 2005 LX Scheduled Services



Swiss
International
Air Lines

	December			Cumulative		
	2005	2004		2005	2004	
Number of Passengers ¹⁾						
Europe	548'480	516'269	6.2%	7'349'951	6'915'548	6.3%
Intercontinental	172'533	180'093	-4.2%	2'214'555	2'272'208	-2.5%
Total	721'013	696'362	3.5%	9'564'506	9'187'756	4.1%
Flights						
Europe	8'631	10'192	-15.3%	117'237	127'659	-8.2%
Intercontinental	1'359	1'318	3.1%	16'480	15'991	3.1%
Total	9'990	11'510	-13.2%	133'717	143'650	-6.9%
Available Seat km (ASK, in mill)						
Europe	672	688	-2.3%	8'487	8'492	-0.1%
Intercontinental	1'451	1'479	-1.9%	17'706	18'990	-6.8%
Total	2'123	2'167	-2.1%	26'193	27'483	-4.7%
Revenue Passenger km (RPK, in mill)						
Europe	418	381	9.5%	5'591	5'164	8.3%
Intercontinental	1'172	1'210	-3.1%	14'878	15'432	-3.6%
Total	1'590	1'592	-0.1%	20'469	20'596	-0.6%
Seat Load Factor (SLF %) ²⁾						
Europe	62.2%	55.5%	6.7%	65.9%	60.8%	5.1%
Intercontinental	80.8%	81.8%	-1.0%	84.0%	81.3%	2.7%
Total	74.9%	73.5%	1.4%	78.1%	74.9%	3.2%
Freight Load Factor (%) ³⁾						
Intercontinental	86.7%	90.0%	-3.3%	86.5%	86.6%	-0.1%
Freight Tonnes Kilometers (FTK, in 1000)						
Intercontinental	97'978	91'535	7.0%	1'141'141	1'135'240	0.5%

¹⁾ Revenue Passengers

²⁾ SLF = RPK / ASK
deviation in % pts

³⁾ Including mail
deviation in % pts