

# SWISS traffic figures

April 2005



## SWISS confirms positive seat load factor trend

**SWISS increased its seat load factor in April by 2.2 percentage points compared to the same month a year ago. Average systemwide seat load factor (SLF) stood at 79.4%. On intercontinental routes SWISS recorded a comparative improvement for the fourteenth consecutive month – gaining 3.1 percentage points to reach a seat load factor of 85.0%. The SLF in Europe was again stronger in April, rising to 67.8%, an improvement of 1.0 percentage points. SWISS carried a total of 842,805 passengers on scheduled services in April.**

Seat load factor on **intercontinental routes** in April was 85.0%, up from 81.9% for the same month a year ago. The number of available seat kilometres (ASK) was 4.6% lower. In contrast, the number of revenue passenger kilometres (RPK) declined by just 1.0%.

All intercontinental regions contributed to the strong seat load factor on long-haul services. The SLF on North Atlantic flights rose by 1.6 percentage points to 87.6%. The gain on Far East routes amounted to 5.2 percentage points to 87.9%. A 6.5-percentage-point increase for the Middle East translated into SLF of 79.4%. Africa services generated a seat load factor of 74.8%, reflecting an increase of 3.0 percentage points. Seat load factor for South America experienced a slight decline, of 0.5 percentage points, but remained strong at 86.2%, almost equal to the figure for the same month a year ago.

Seat load factor on **European routes** totalled 67.8% in April, which in comparative terms was 1.0 percentage points higher on a month-on-month comparison. The ASK total for Europe was increased for the first time in more than two years, rising by 2.6% against same month a year prior. Parallel to this, SWISS increased revenue passenger kilometres (RPK) by 4.0%.

SWISS was able to boost overall capacity in Europe while reducing by 3.2% the number of flights operated. This reflects SWISS's growing tendency to deploy larger aircraft in Europe as a way of remaining competitive, particularly against low cost carriers. Modernising cabin interiors has included the installation of new, more comfortable seats in Airbus A320 aircraft, with a resultant 12% increase in capacity on the European Airbus fleet. April marked the first month in which all of the modernised Airbus A320 aircraft was in service.

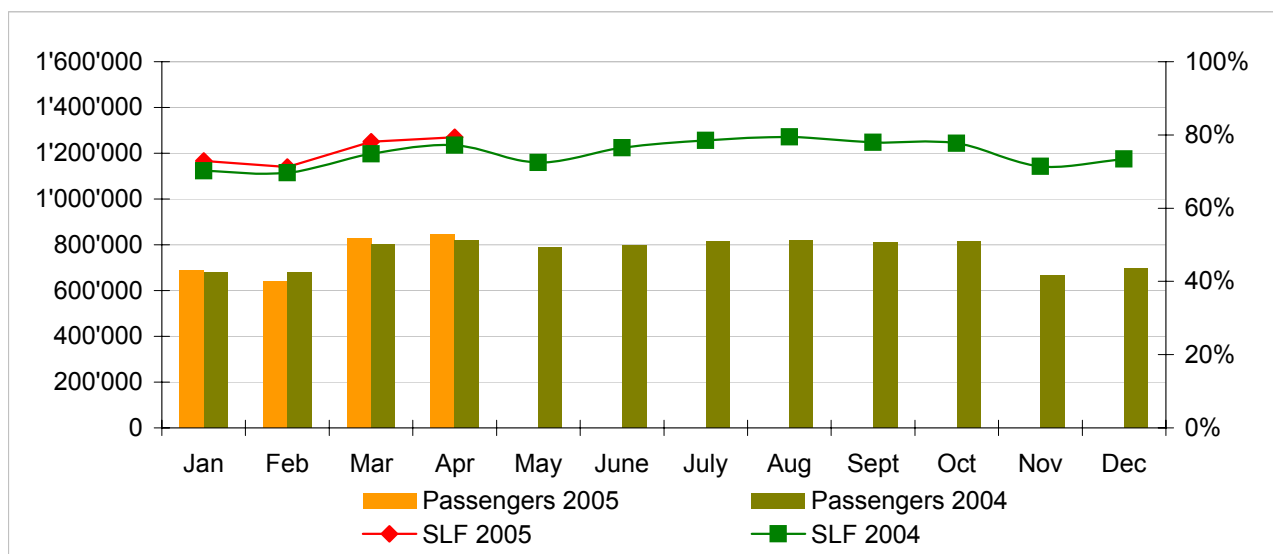
By increasing capacity in Europe, SWISS is strengthening its Zurich hub. Intensive marketing and sales efforts are also having a positive effect on capacity utilisation in Europe.

## Traffic Statistics January-December 2005 LX Scheduled Services



	Passengers Europe	Passengers Intercontinental	Passengers Total	SLF Europe	SLF Intercontinental	SLF Total
Jan	505'995	182'671	688'666	54.2%	81.6%	72.9%
Feb	484'640	154'540	639'180	55.6%	78.7%	71.2%
Mar	640'333	185'569	825'902	65.7%	84.2%	78.1%
Apr	654'672	188'133	842'805	67.8%	85.0%	79.4%
May						
Jun						
Jul						
Aug						
Sep						
Oct						
Nov						
Dec						

### Comparison Passengers and Seat Load Factor (SLF %) versus prior year



#### Next updates:

- May 05 figures                      June 10, 2005
- June 05 figures                      July 12, 2005
- July 05 figures                        August 10, 2005

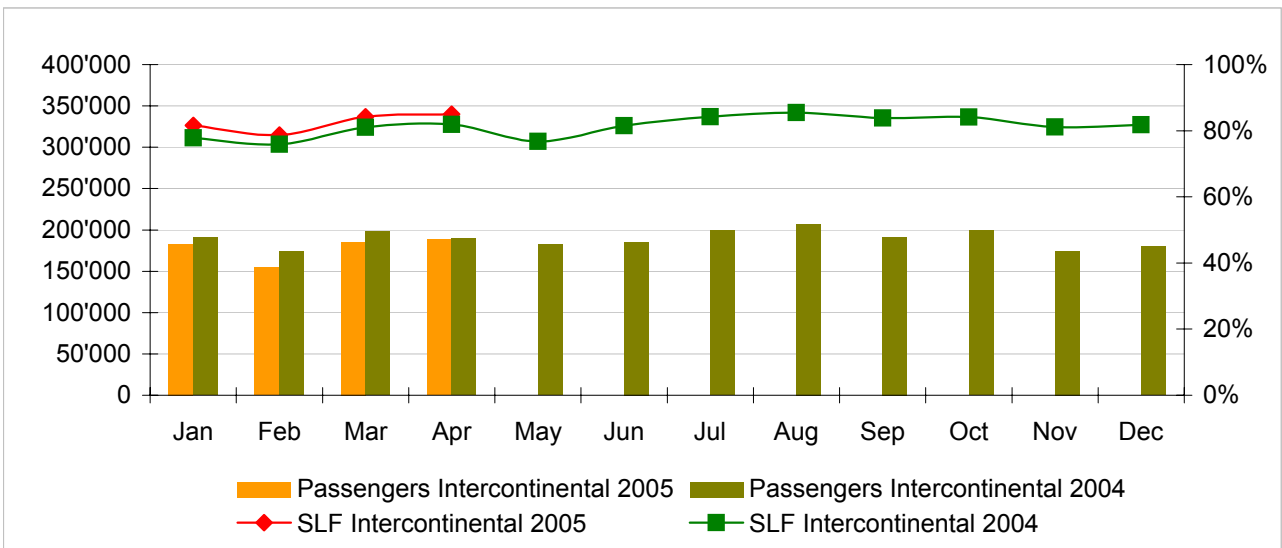
**Passengers and Seat Load Factor (SLF %) European Routes**

Comparison versus prior year



**Passengers and Seat Load Factor (SLF %) Intercontinental Routes**

Comparison versus prior year



## Traffic Statistics January 2005 LX Scheduled Services



Swiss  
International  
Air Lines

	January			Cumulative		
	2005	2004		2005	2004	
<b>Number of Passengers <sup>1)</sup></b>						
Europe	505'995	488'989	3.5%	505'995	488'989	3.5%
Intercontinental	182'671	190'710	-4.2%	182'671	190'710	-4.2%
Total	688'666	679'699	1.3%	688'666	679'699	1.3%
<b>Flights</b>						
Europe	10'241	10'640	-3.8%	10'241	10'640	-3.8%
Intercontinental	1'366	1'446	-5.5%	1'366	1'446	-5.5%
Total	11'607	12'086	-4.0%	11'607	12'086	-4.0%
<b>Available Seat km (ASK, in mill)</b>						
Europe	690	703	-1.8%	690	703	-1.8%
Intercontinental	1'500	1'724	-13.0%	1'500	1'724	-13.0%
Total	2'190	2'427	-9.8%	2'190	2'427	-9.8%
<b>Revenue Passenger km (RPK, in mill)</b>						
Europe	374	362	3.3%	374	362	3.3%
Intercontinental	1'223	1'341	-8.8%	1'223	1'341	-8.8%
Total	1'597	1'704	-6.2%	1'597	1'704	-6.2%
<b>Seat Load Factor (SLF %) <sup>2)</sup></b>						
Europe	54.2%	51.5%	2.7%	54.2%	51.5%	2.7%
Intercontinental	81.6%	77.8%	3.8%	81.6%	77.8%	3.8%
Total	72.9%	70.2%	2.7%	72.9%	70.2%	2.7%
<b>Freight Load Factor (%) <sup>3)</sup></b>						
Intercontinental	82.4%	80.0%	2.4%	82.4%	80.0%	2.4%
<b>Freight Tonnes Kilometers (FTK, in 1000)</b>						
Intercontinental	89'475	85'117	5.1%	89'475	85'117	5.1%

<sup>1)</sup> Revenue Passengers

<sup>2)</sup> SLF = RPK / ASK  
deviation in % pts

<sup>3)</sup> Including mail  
deviation in % pts

## Traffic Statistics February 2005 LX Scheduled Services



Swiss  
International  
Air Lines

	February			Cumulative		
	2005	2004		2005	2004	
<b>Number of Passengers <sup>1)</sup></b>						
Europe	484'640	504'960	-4.0%	990'635	993'949	-0.3%
Intercontinental	154'540	173'962	-11.2%	337'211	364'672	-7.5%
Total	639'180	678'922	-5.9%	1'327'846	1'358'621	-2.3%
<b>Flights</b>						
Europe	9'511	10'149	-6.3%	19'752	20'789	-5.0%
Intercontinental	1'234	1'352	-8.7%	2'600	2'798	-7.1%
Total	10'745	11'501	-6.6%	22'352	23'587	-5.2%
<b>Available Seat km (ASK, in mill)</b>						
Europe	632	669	-5.6%	1'322	1'372	-3.7%
Intercontinental	1'314	1'603	-18.0%	2'814	3'327	-15.4%
Total	1'946	2'272	-14.3%	4'136	4'699	-12.0%
<b>Revenue Passenger km (RPK, in mill)</b>						
Europe	351	365	-3.9%	725	727	-0.3%
Intercontinental	1'035	1'217	-14.9%	2'258	2'558	-11.7%
Total	1'386	1'582	-12.4%	2'983	3'285	-9.2%
<b>Seat Load Factor (SLF %) <sup>2)</sup></b>						
Europe	55.6%	54.6%	1.0%	54.8%	53.0%	1.8%
Intercontinental	78.7%	75.9%	2.8%	80.2%	76.9%	3.3%
Total	71.2%	69.6%	1.6%	72.1%	69.9%	2.2%
<b>Freight Load Factor (%) <sup>3)</sup></b>						
Intercontinental	89.9%	90.0%	-0.1%	86.1%	85.0%	1.1%
<b>Freight Tonnes Kilometers (FTK, in 1000)</b>						
Intercontinental	89'993	97'771	-8.0%	179'468	182'888	-1.9%

<sup>1)</sup> Revenue Passengers

<sup>2)</sup> SLF = RPK / ASK  
deviation in % pts

<sup>3)</sup> Including mail  
deviation in % pts

## Traffic Statistics March 2005 LX Scheduled Services



Swiss  
International  
Air Lines

	March			Cumulative		
	2005	2004		2005	2004	
<b>Number of Passengers <sup>1)</sup></b>						
Europe	640'333	602'964	6.2%	1'630'968	1'596'913	2.1%
Intercontinental	185'569	198'178	-6.4%	522'780	562'850	-7.1%
Total	825'902	801'142	3.1%	2'153'748	2'159'763	-0.3%
<b>Flights</b>						
Europe	10'572	10'988	-3.8%	30'324	31'777	-4.6%
Intercontinental	1'385	1'419	-2.4%	3'985	4'217	-5.5%
Total	11'957	12'407	-3.6%	34'309	35'994	-4.7%
<b>Available Seat km (ASK, in mill)</b>						
Europe	725	729	-0.5%	2'047	2'101	-2.6%
Intercontinental	1'474	1'686	-12.5%	4'288	5'012	-14.4%
Total	2'199	2'414	-8.9%	6'336	7'113	-10.9%
<b>Revenue Passenger km (RPK, in mill)</b>						
Europe	477	440	8.4%	1'202	1'167	3.0%
Intercontinental	1'242	1'367	-9.1%	3'500	3'925	-10.8%
Total	1'719	1'806	-4.8%	4'702	5'092	-7.7%
<b>Seat Load Factor (SLF %) <sup>2)</sup></b>						
Europe	65.7%	60.3%	5.4%	58.7%	55.5%	3.2%
Intercontinental	84.2%	81.1%	3.1%	81.6%	78.3%	3.3%
Total	78.1%	74.8%	3.3%	74.2%	71.6%	2.6%
<b>Freight Load Factor (%) <sup>3)</sup></b>						
Intercontinental	89.0%	91.0%	-2.0%	87.1%	87.0%	0.1%
<b>Freight Tonnes Kilometers (FTK, in 1000)</b>						
Intercontinental	98'855	104'478	-5.4%	278'323	287'366	-3.1%

<sup>1)</sup> Revenue Passengers

<sup>2)</sup> SLF = RPK / ASK  
deviation in % pts

<sup>3)</sup> Including mail  
deviation in % pts

## Traffic Statistics April 2005 LX Scheduled Services



Swiss  
International  
Air Lines

	April			Cumulative		
	2005	2004		2005	2004	
<b>Number of Passengers <sup>1)</sup></b>						
Europe	654'672	629'871	3.9%	2'285'640	2'226'784	2.6%
Intercontinental	188'133	189'881	-0.9%	710'913	752'731	-5.6%
Total	842'805	819'752	2.8%	2'996'553	2'979'515	0.6%
<b>Flights</b>						
Europe	10'284	10'622	-3.2%	40'608	42'399	-4.2%
Intercontinental	1'385	1'299	6.6%	5'370	5'516	-2.6%
Total	11'669	11'921	-2.1%	45'978	47'915	-4.0%
<b>Available Seat km (ASK, in mill)</b>						
Europe	723	705	2.6%	2'770	2'806	-1.3%
Intercontinental	1'489	1'561	-4.6%	5'778	6'573	-12.1%
Total	2'212	2'266	-2.4%	8'548	9'379	-8.9%
<b>Revenue Passenger km (RPK, in mill)</b>						
Europe	490	471	4.0%	1'692	1'638	3.3%
Intercontinental	1'266	1'278	-1.0%	4'766	5'203	-8.4%
Total	1'756	1'749	0.4%	6'457	6'841	-5.6%
<b>Seat Load Factor (SLF %) <sup>2)</sup></b>						
Europe	67.8%	66.8%	1.0%	61.1%	58.4%	2.7%
Intercontinental	85.0%	81.9%	3.1%	82.5%	79.2%	3.3%
Total	79.4%	77.2%	2.2%	75.5%	72.9%	2.6%
<b>Estimate Freight Load Factor (%) <sup>3)</sup></b>						
Intercontinental	87.1%	83.0%	4.1%	87.1%	86.0%	1.1%
<b>Estimate Freight Tonnes Kilometers (FTK, in 1000)</b>						
Intercontinental	98'708	88'759	11.2%	377'031	376'125	0.2%

<sup>1)</sup> Revenue Passengers

<sup>2)</sup> SLF = RPK / ASK  
deviation in % pts

<sup>3)</sup> Including mail  
deviation in % pts

## Traffic Statistics May 2005 LX Scheduled Services



Swiss  
International  
Air Lines

	May		Cumulative	
	2005	2004	2005	2004
<b>Number of Passengers <sup>1)</sup></b>				
Europe	606'582		2'833'366	
Intercontinental	182'270		935'001	
Total	788'852		3'768'367	
<b>Flights</b>				
Europe	10'883		53'282	
Intercontinental	1'331		6'847	
Total	12'214		60'129	
<b>Available Seat km (ASK, in mill)</b>				
Europe	718		3'524	
Intercontinental	1'607		8'180	
Total	2'325		11'704	
<b>Revenue Passenger km (RPK, in mill)</b>				
Europe	451		2'089	
Intercontinental	1'234		6'437	
Total	1'685		8'526	
<b>Seat Load Factor (SLF %) <sup>2)</sup></b>				
Europe	62.8%		59.3%	
Intercontinental	76.8%		78.7%	
Total	72.5%		72.8%	
<b>Freight Load Factor (%) <sup>3)</sup></b>				
Intercontinental	84.7%		85.7%	
<b>Freight Tonnes Kilometers (FTK, in 1000)</b>				
Intercontinental	95'309		471'434	

<sup>1)</sup> Revenue Passengers

<sup>2)</sup> SLF = RPK / ASK  
deviation in % pts

<sup>3)</sup> Including mail  
deviation in % pts

## Traffic Statistics June 2005 LX Scheduled Services



Swiss  
International  
Air Lines

	June		Cumulative	
	2005	2004	2005	2004
<b>Number of Passengers <sup>1)</sup></b>				
Europe	610'949		3'444'315	
Intercontinental	185'663		1'120'664	
Total	796'612		4'564'979	
<b>Flights</b>				
Europe	10'574		63'856	
Intercontinental	1'282		8'129	
Total	11'856		71'985	
<b>Available Seat km (ASK, in mill)</b>				
Europe	707		4'231	
Intercontinental	1'547		9'727	
Total	2'254		13'958	
<b>Revenue Passenger km (RPK, in mill)</b>				
Europe	462		2'551	
Intercontinental	1'261		7'698	
Total	1'724		10'249	
<b>Seat Load Factor (SLF %) <sup>2)</sup></b>				
Europe	65.4%		60.3%	
Intercontinental	81.5%		79.1%	
Total	76.5%		73.4%	
<b>Freight Load Factor (%) <sup>3)</sup></b>				
Intercontinental	86.9%		85.9%	
<b>Freight Tonnes Kilometers (FTK, in 1000)</b>				
Intercontinental	95'382		566'816	

<sup>1)</sup> Revenue Passengers

<sup>2)</sup> SLF = RPK / ASK  
deviation in % pts

<sup>3)</sup> Including mail  
deviation in % pts

## Traffic Statistics July 2005 LX Scheduled Services



Swiss  
International  
Air Lines

	July		Cumulative	
	2005	2004	2005	2004
<b>Number of Passengers <sup>1)</sup></b>				
Europe	616'782		4'061'097	
Intercontinental	199'166		1'319'830	
<b>Total</b>	<b>815'948</b>		<b>5'380'927</b>	
<b>Flights</b>				
Europe	10'889		74'745	
Intercontinental	1'332		9'461	
<b>Total</b>	<b>12'221</b>		<b>84'206</b>	
<b>Available Seat km (ASK, in mill)</b>				
Europe	725		4'956	
Intercontinental	1'603		11'330	
<b>Total</b>	<b>2'328</b>		<b>16'286</b>	
<b>Revenue Passenger km (RPK, in mill)</b>				
Europe	477		3'029	
Intercontinental	1'350		9'048	
<b>Total</b>	<b>1'827</b>		<b>12'076</b>	
<b>Seat Load Factor (SLF %) <sup>2)</sup></b>				
Europe	65.9%		61.1%	
Intercontinental	84.2%		79.9%	
<b>Total</b>	<b>78.5%</b>		<b>74.2%</b>	
<b>Freight Load Factor (%) <sup>3)</sup></b>				
Intercontinental	86.0%		85.9%	
<b>Freight Tonnes Kilometers (FTK, in 1000)</b>				
Intercontinental	94'999		661'815	

<sup>1)</sup> Revenue Passengers

<sup>2)</sup> SLF = RPK / ASK  
deviation in % pts

<sup>3)</sup> Including mail  
deviation in % pts

## Traffic Statistics August 2005 LX Scheduled Services



Swiss  
International  
Air Lines

	August		Cumulative	
	2005	2004	2005	2004
<b>Number of Passengers <sup>1)</sup></b>				
Europe	736'117		5'437'242	
Intercontinental	265'112		1'854'085	
Total	1'001'229		7'291'327	
<b>Flights</b>				
Europe	13'864		121'705	
Intercontinental	1'803		13'999	
Total	15'667		135'704	
<b>Available Seat km (ASK, in mill)</b>				
Europe	847		7'282	
Intercontinental	2'034		15'943	
Total	2'881		23'224	
<b>Revenue Passenger km (RPK, in mill)</b>				
Europe	592		4'223	
Intercontinental	1'725		12'309	
Total	2'317		16'531	
<b>Seat Load Factor (SLF %) <sup>2)</sup></b>				
Europe	69.9%		58.0%	
Intercontinental	84.8%		77.2%	
Total	80.4%		71.2%	
<b>Freight Load Factor (%) <sup>3)</sup></b>				
Intercontinental	79.7%		83.4%	
<b>Freight Tonnes Kilometers (FTK, in 1000)</b>				
Intercontinental	97'449		866'094	

<sup>1)</sup> Revenue Passengers

<sup>2)</sup> SLF = RPK / ASK  
deviation in % pts

<sup>3)</sup> Including mail  
deviation in % pts

## Traffic Statistics September 2005 LX Scheduled Services



Swiss  
International  
Air Lines

	September		Cumulative	
	2005	2004	2005	2004
<b>Number of Passengers <sup>1)</sup></b>				
Europe	618'408		5'291'463	
Intercontinental	191'552		1'718'639	
Total	809'960		7'010'102	
<b>Flights</b>				
Europe	10'670		96'061	
Intercontinental	1'277		12'071	
Total	11'947		108'132	
<b>Available Seat km (ASK, in mill)</b>				
Europe	709		6'392	
Intercontinental	1'533		14'465	
Total	2'242		20'856	
<b>Revenue Passenger km (RPK, in mill)</b>				
Europe	463		3'971	
Intercontinental	1'285		11'703	
Total	1'748		15'674	
<b>Seat Load Factor (SLF %) <sup>2)</sup></b>				
Europe	65.3%		62.1%	
Intercontinental	83.8%		80.9%	
Total	78.0%		75.2%	
<b>Freight Load Factor (%) <sup>3)</sup></b>				
Intercontinental	86.1%		85.8%	
<b>Freight Tonnes Kilometers (FTK, in 1000)</b>				
Intercontinental	91'731		845'914	

<sup>1)</sup> Revenue Passengers

<sup>2)</sup> SLF = RPK / ASK  
deviation in % pts

<sup>3)</sup> Including mail  
deviation in % pts

## Traffic Statistics October 2005 LX Scheduled Services



Swiss  
International  
Air Lines

	October		Cumulative	
	2005	2004	2005	2004
<b>Number of Passengers <sup>1)</sup></b>				
Europe	615'779		5'907'242	
Intercontinental	199'213		1'917'852	
Total	814'992		7'825'094	
<b>Flights</b>				
Europe	10'902		106'963	
Intercontinental	1'324		13'395	
Total	12'226		120'358	
<b>Available Seat km (ASK, in mill)</b>				
Europe	724		7'116	
Intercontinental	1'599		16'064	
Total	2'323		23'179	
<b>Revenue Passenger km (RPK, in mill)</b>				
Europe	460		4'431	
Intercontinental	1'345		13'047	
Total	1'805		17'479	
<b>Seat Load Factor (SLF %) <sup>2)</sup></b>				
Europe	63.6%		62.3%	
Intercontinental	84.1%		81.2%	
Total	77.7%		75.4%	
<b>Freight Load Factor (%) <sup>3)</sup></b>				
Intercontinental	88.0%		86.0%	
<b>Freight Tonnes Kilometers (FTK, in 1000)</b>				
Intercontinental	100'034		945'948	

<sup>1)</sup> Revenue Passengers

<sup>2)</sup> SLF = RPK / ASK  
deviation in % pts

<sup>3)</sup> Including mail  
deviation in % pts

## Traffic Statistics November 2005 LX Scheduled Services



Swiss  
International  
Air Lines

	November		Cumulative	
	2005	2004	2005	2004
<b>Number of Passengers <sup>1)</sup></b>				
Europe	492'037		6'399'279	
Intercontinental	174'263		2'092'115	
<b>Total</b>	<b>666'300</b>		<b>8'491'394</b>	
<b>Flights</b>				
Europe	10'504		117'467	
Intercontinental	1'278		14'673	
<b>Total</b>	<b>11'782</b>		<b>132'140</b>	
<b>Available Seat km (ASK, in mill)</b>				
Europe	689		7'804	
Intercontinental	1'447		17'511	
<b>Total</b>	<b>2'136</b>		<b>25'315</b>	
<b>Revenue Passenger km (RPK, in mill)</b>				
Europe	351		4'782	
Intercontinental	1'174		14'221	
<b>Total</b>	<b>1'525</b>		<b>19'004</b>	
<b>Seat Load Factor (SLF %) <sup>2)</sup></b>				
Europe	51.0%		61.3%	
Intercontinental	81.1%		81.2%	
<b>Total</b>	<b>71.4%</b>		<b>75.1%</b>	
<b>Freight Load Factor (%) <sup>3)</sup></b>				
Intercontinental	88.5%		86.3%	
<b>Freight Tonnes Kilometers (FTK, in 1000)</b>				
Intercontinental	97'757		1'043'705	

<sup>1)</sup> Revenue Passengers

<sup>2)</sup> SLF = RPK / ASK  
deviation in % pts

<sup>3)</sup> Including mail  
deviation in % pts

## Traffic Statistics December 2005 LX Scheduled Services



Swiss  
International  
Air Lines

	December		Cumulative	
	2005	2004	2005	2004
<b>Number of Passengers <sup>1)</sup></b>				
Europe	516'269		6'915'548	
Intercontinental	180'093		2'272'208	
Total	696'362		9'187'756	
<b>Flights</b>				
Europe	10'192		127'659	
Intercontinental	1'318		15'991	
Total	11'510		143'650	
<b>Available Seat km (ASK, in mill)</b>				
Europe	688		8'492	
Intercontinental	1'479		18'990	
Total	2'167		27'483	
<b>Revenue Passenger km (RPK, in mill)</b>				
Europe	381		5'164	
Intercontinental	1'210		15'432	
Total	1'592		20'596	
<b>Seat Load Factor (SLF %) <sup>2)</sup></b>				
Europe	55.5%		60.8%	
Intercontinental	81.8%		81.3%	
Total	73.5%		74.9%	
<b>Freight Load Factor (%) <sup>3)</sup></b>				
Intercontinental	87.2%		86.3%	
<b>Freight Tonnes Kilometers (FTK, in 1000)</b>				
Intercontinental	97'713		1'141'418	

<sup>1)</sup> Revenue Passengers

<sup>2)</sup> SLF = RPK / ASK  
deviation in % pts

<sup>3)</sup> Including mail  
deviation in % pts