

SWISS traffic figures

February 2005



SWISS boosts seat load factor further

SWISS aircraft had a seat load factor (SLF) of 71.2% in February 2005, an increase of 1.6 percentage points over the same month a year ago. Seat load factor on intercontinental routes continued to trend strongly at 78.7%, up 2.8 percentage points on a year-ago comparison. Capacity utilisation was also higher in Europe, as it had been in January, rising by 1.0 percentage point to 55.6%. SWISS carried 639,180 passengers on scheduled services in February.

The February seat load factor on **intercontinental routes** stood at 78.7%, compared to 75.9% a year ago. Capacity expressed in available seat kilometres (ASK) was reduced by 18.0% against the figure for the same month a year earlier. Revenue seat kilometres (RPK), in contrast, fell by only 14.9%.

The long-haul SLF trended positively in most regions. Flights across the North Atlantic had an SLF of 77.9%, a gain of 6.7 percentage points. The SLF on Far East routes declined by 1.8 percentage points to 81.2%. Buoyed by an increase of 6.8 percentage points, the SLF for the Middle East climbed to 75.2%. Flights on African routes reported a 75.6% SLF, which translates to an increase of 4.1 percentage points. The SLF on South American routes dropped by 4.9 percentage points from the exceptionally high level of 90% year ago to 85.1%.

The seat load factor on **European routes** amounted to 55.6% in February, a full percentage point higher than for the same month a year earlier. The ASK total for the month was 5.6% less on a year-ago comparison, while the RPK figure fell by only 3.9%.

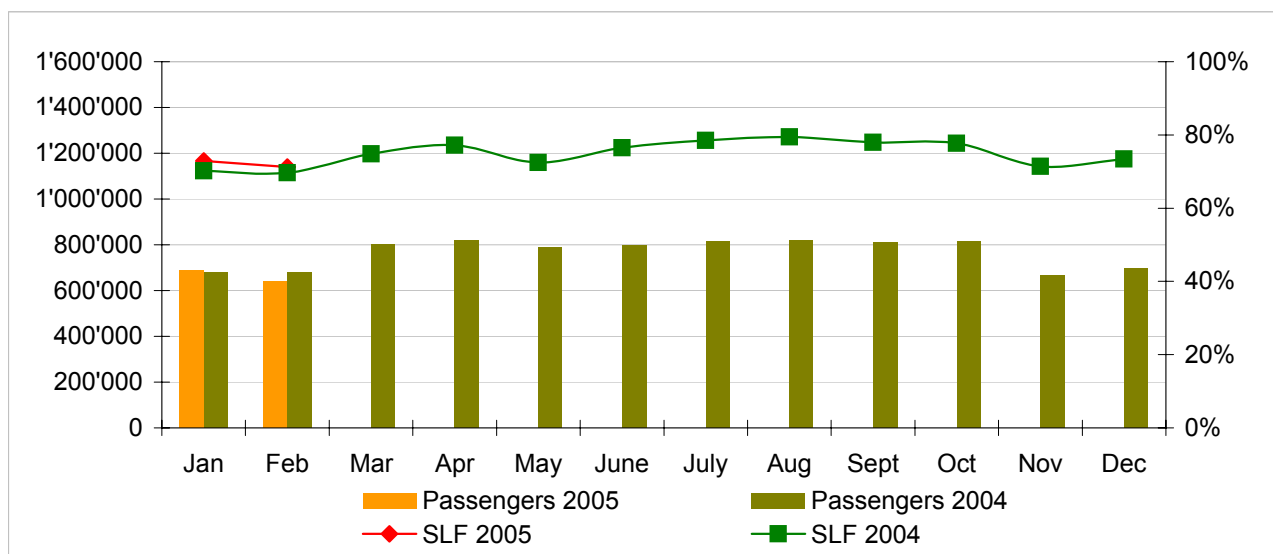
In Europe SWISS continues to experience strong competitive pressure, particularly from low-cost carriers. Targeted marketing and sales actions are proving successful, however, resulting in a higher seat load factor in Europe in both February and January.

Traffic Statistics January-December 2005 LX Scheduled Services



| | Passengers Europe | Passengers Intercontinental | Passengers Total | SLF Europe | SLF Intercontinental | SLF Total |
|-----|----------------------|--------------------------------|---------------------|---------------|-------------------------|--------------|
| Jan | 505'995 | 182'671 | 688'666 | 54.2% | 81.6% | 72.9% |
| Feb | 484'640 | 154'540 | 639'180 | 55.6% | 78.7% | 71.2% |
| Mar | | | | | | |
| Apr | | | | | | |
| May | | | | | | |
| Jun | | | | | | |
| Jul | | | | | | |
| Aug | | | | | | |
| Sep | | | | | | |
| Oct | | | | | | |
| Nov | | | | | | |
| Dec | | | | | | |

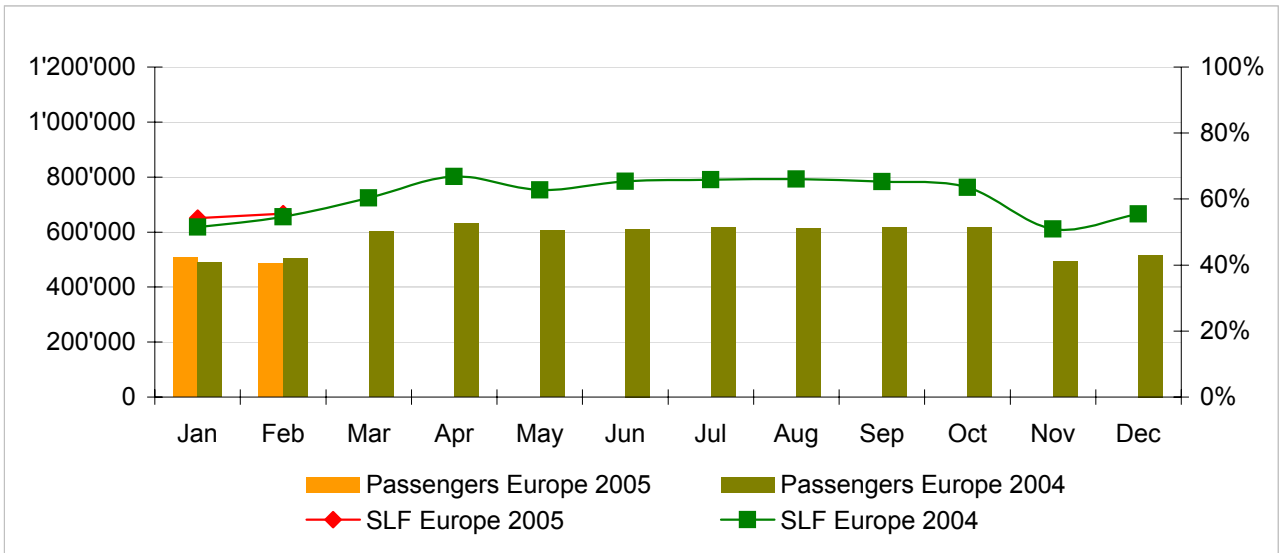
Comparison Passengers and Seat Load Factor (SLF %) versus prior year



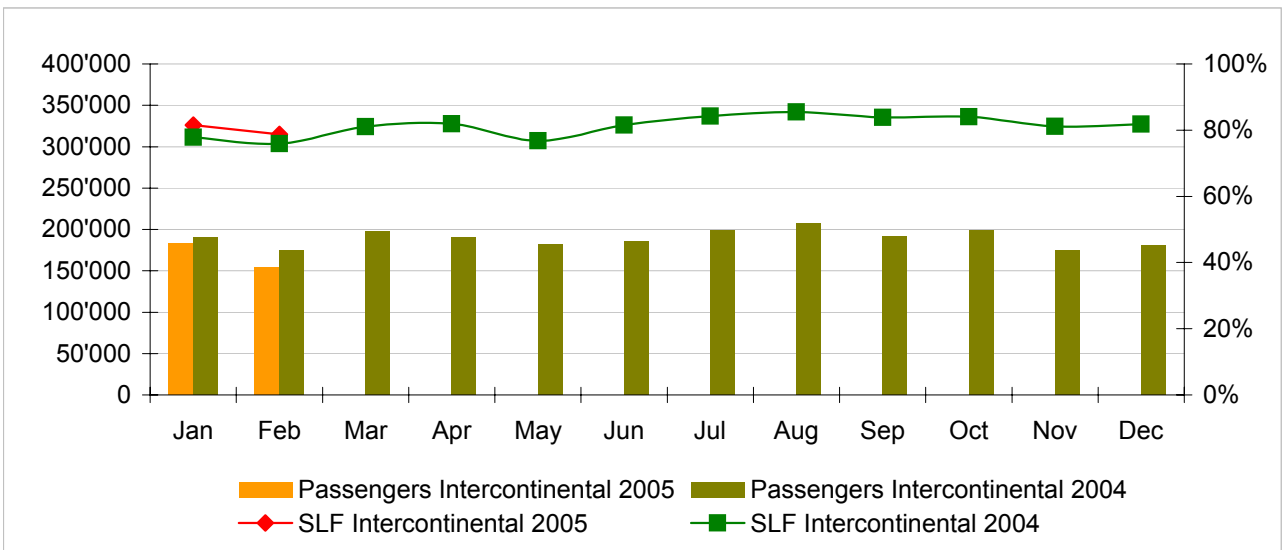
Next updates:

- March 05 figures April 12th, 2005
- April 05 figures May 10th, 2005
- May 05 figures June 10th, 2005

Passengers and Seat Load Factor (SLF %) European Routes
Comparison versus prior year



Passengers and Seat Load Factor (SLF %) Intercontinental Routes
Comparison versus prior year



Traffic Statistics January 2005 LX Scheduled Services



Swiss
International
Air Lines

| | January | | | Cumulative | | |
|---|---------|---------|--------|------------|---------|--------|
| | 2005 | 2004 | | 2005 | 2004 | |
| Number of Passengers ¹⁾ | | | | | | |
| Europe | 505'995 | 488'989 | 3.5% | 505'995 | 488'989 | 3.5% |
| Intercontinental | 182'671 | 190'710 | -4.2% | 182'671 | 190'710 | -4.2% |
| Total | 688'666 | 679'699 | 1.3% | 688'666 | 679'699 | 1.3% |
| Flights | | | | | | |
| Europe | 10'241 | 10'640 | -3.8% | 10'241 | 10'640 | -3.8% |
| Intercontinental | 1'366 | 1'446 | -5.5% | 1'366 | 1'446 | -5.5% |
| Total | 11'607 | 12'086 | -4.0% | 11'607 | 12'086 | -4.0% |
| Available Seat km (ASK, in mill) | | | | | | |
| Europe | 690 | 703 | -1.8% | 690 | 703 | -1.8% |
| Intercontinental | 1'500 | 1'724 | -13.0% | 1'500 | 1'724 | -13.0% |
| Total | 2'190 | 2'427 | -9.8% | 2'190 | 2'427 | -9.8% |
| Revenue Passenger km (RPK, in mill) | | | | | | |
| Europe | 374 | 362 | 3.3% | 374 | 362 | 3.3% |
| Intercontinental | 1'223 | 1'341 | -8.8% | 1'223 | 1'341 | -8.8% |
| Total | 1'597 | 1'704 | -6.2% | 1'597 | 1'704 | -6.2% |
| Seat Load Factor (SLF %) ²⁾ | | | | | | |
| Europe | 54.2% | 51.5% | 2.7% | 54.2% | 51.5% | 2.7% |
| Intercontinental | 81.6% | 77.8% | 3.8% | 81.6% | 77.8% | 3.8% |
| Total | 72.9% | 70.2% | 2.7% | 72.9% | 70.2% | 2.7% |
| Freight Load Factor (%) ³⁾ | | | | | | |
| Intercontinental | 82.4% | 80.0% | 2.4% | 82.4% | 80.0% | 2.4% |
| Freight Tonnes Kilometers (FTK, in 1000) | | | | | | |
| Intercontinental | 89'475 | 85'117 | 5.1% | 89'475 | 85'117 | 5.1% |

¹⁾ Revenue Passengers

²⁾ SLF = RPK / ASK
deviation in % pts

³⁾ Including mail
deviation in % pts

Traffic Statistics February 2005 LX Scheduled Services



Swiss
International
Air Lines

| | February | | | Cumulative | | |
|--|----------|---------|--------|------------|-----------|--------|
| | 2005 | 2004 | | 2005 | 2004 | |
| Number of Passengers ¹⁾ | | | | | | |
| Europe | 484'640 | 504'960 | -4.0% | 990'635 | 993'949 | -0.3% |
| Intercontinental | 154'540 | 173'962 | -11.2% | 337'211 | 364'672 | -7.5% |
| Total | 639'180 | 678'922 | -5.9% | 1'327'846 | 1'358'621 | -2.3% |
| Flights | | | | | | |
| Europe | 9'511 | 10'149 | -6.3% | 19'752 | 20'789 | -5.0% |
| Intercontinental | 1'234 | 1'352 | -8.7% | 2'600 | 2'798 | -7.1% |
| Total | 10'745 | 11'501 | -6.6% | 22'352 | 23'587 | -5.2% |
| Available Seat km (ASK, in mill) | | | | | | |
| Europe | 632 | 669 | -5.6% | 1'322 | 1'372 | -3.7% |
| Intercontinental | 1'314 | 1'603 | -18.0% | 2'814 | 3'327 | -15.4% |
| Total | 1'946 | 2'272 | -14.3% | 4'136 | 4'699 | -12.0% |
| Revenue Passenger km (RPK, in mill) | | | | | | |
| Europe | 351 | 365 | -3.9% | 725 | 727 | -0.3% |
| Intercontinental | 1'035 | 1'217 | -14.9% | 2'258 | 2'558 | -11.7% |
| Total | 1'386 | 1'582 | -12.4% | 2'983 | 3'285 | -9.2% |
| Seat Load Factor (SLF %) ²⁾ | | | | | | |
| Europe | 55.6% | 54.6% | 1.0% | 54.8% | 53.0% | 1.8% |
| Intercontinental | 78.7% | 75.9% | 2.8% | 80.2% | 76.9% | 3.3% |
| Total | 71.2% | 69.6% | 1.6% | 72.1% | 69.9% | 2.2% |
| Estimate Freight Load Factor (%) ³⁾ | | | | | | |
| Intercontinental | 89.0% | 90.0% | -1.0% | 85.7% | 85.0% | 0.7% |
| Estimate Freight Tonnes Kilometers (FTK, in 1000) | | | | | | |
| Intercontinental | 91'626 | 97'771 | -6.3% | 181'101 | 182'888 | -1.0% |

¹⁾ Revenue Passengers

²⁾ SLF = RPK / ASK
deviation in % pts

³⁾ Including mail
deviation in % pts

Traffic Statistics March 2005 LX Scheduled Services



Swiss
International
Air Lines

| | March | | Cumulative | |
|---|---------|------|------------|------|
| | 2005 | 2004 | 2005 | 2004 |
| Number of Passengers ¹⁾ | | | | |
| Europe | 602'964 | | 1'596'913 | |
| Intercontinental | 198'178 | | 562'850 | |
| Total | 801'142 | | 2'159'763 | |
| Flights | | | | |
| Europe | 10'988 | | 31'777 | |
| Intercontinental | 1'419 | | 4'217 | |
| Total | 12'407 | | 35'994 | |
| Available Seat km (ASK, in mill) | | | | |
| Europe | 729 | | 2'101 | |
| Intercontinental | 1'686 | | 5'012 | |
| Total | 2'414 | | 7'113 | |
| Revenue Passenger km (RPK, in mill) | | | | |
| Europe | 440 | | 1'167 | |
| Intercontinental | 1'367 | | 3'925 | |
| Total | 1'806 | | 5'092 | |
| Seat Load Factor (SLF %) ²⁾ | | | | |
| Europe | 60.3% | | 55.5% | |
| Intercontinental | 81.1% | | 78.3% | |
| Total | 74.8% | | 71.6% | |
| Freight Load Factor (%) ³⁾ | | | | |
| Intercontinental | 91.0% | | 87.0% | |
| Freight Tonnes Kilometers (FTK, in 1000) | | | | |
| Intercontinental | 104'478 | | 287'366 | |

¹⁾ Revenue Passengers

²⁾ SLF = RPK / ASK
deviation in % pts

³⁾ Including mail
deviation in % pts

Traffic Statistics April 2005 LX Scheduled Services



Swiss
International
Air Lines

| | April | | Cumulative | |
|---|---------|------|------------|------|
| | 2005 | 2004 | 2005 | 2004 |
| Number of Passengers ¹⁾ | | | | |
| Europe | 629'871 | | 2'226'784 | |
| Intercontinental | 189'881 | | 752'731 | |
| Total | 819'752 | | 2'979'515 | |
| Flights | | | | |
| Europe | 10'622 | | 42'399 | |
| Intercontinental | 1'299 | | 5'516 | |
| Total | 11'921 | | 47'915 | |
| Available Seat km (ASK, in mill) | | | | |
| Europe | 705 | | 2'806 | |
| Intercontinental | 1'561 | | 6'573 | |
| Total | 2'266 | | 9'379 | |
| Revenue Passenger km (RPK, in mill) | | | | |
| Europe | 471 | | 1'638 | |
| Intercontinental | 1'278 | | 5'203 | |
| Total | 1'749 | | 6'841 | |
| Seat Load Factor (SLF %) ²⁾ | | | | |
| Europe | 66.8% | | 58.4% | |
| Intercontinental | 81.9% | | 79.2% | |
| Total | 77.2% | | 72.9% | |
| Freight Load Factor (%) ³⁾ | | | | |
| Intercontinental | 83.0% | | 86.0% | |
| Freight Tonnes Kilometers (FTK, in 1000) | | | | |
| Intercontinental | 88'759 | | 376'125 | |

¹⁾ Revenue Passengers

²⁾ SLF = RPK / ASK
deviation in % pts

³⁾ Including mail
deviation in % pts

Traffic Statistics May 2005 LX Scheduled Services



Swiss
International
Air Lines

| | May | | Cumulative | |
|---|---------|------|------------|------|
| | 2005 | 2004 | 2005 | 2004 |
| Number of Passengers ¹⁾ | | | | |
| Europe | 606'582 | | 2'833'366 | |
| Intercontinental | 182'270 | | 935'001 | |
| Total | 788'852 | | 3'768'367 | |
| Flights | | | | |
| Europe | 10'883 | | 53'282 | |
| Intercontinental | 1'331 | | 6'847 | |
| Total | 12'214 | | 60'129 | |
| Available Seat km (ASK, in mill) | | | | |
| Europe | 718 | | 3'524 | |
| Intercontinental | 1'607 | | 8'180 | |
| Total | 2'325 | | 11'704 | |
| Revenue Passenger km (RPK, in mill) | | | | |
| Europe | 451 | | 2'089 | |
| Intercontinental | 1'234 | | 6'437 | |
| Total | 1'685 | | 8'526 | |
| Seat Load Factor (SLF %) ²⁾ | | | | |
| Europe | 62.8% | | 59.3% | |
| Intercontinental | 76.8% | | 78.7% | |
| Total | 72.5% | | 72.8% | |
| Freight Load Factor (%) ³⁾ | | | | |
| Intercontinental | 84.7% | | 85.7% | |
| Freight Tonnes Kilometers (FTK, in 1000) | | | | |
| Intercontinental | 95'309 | | 471'434 | |

¹⁾ Revenue Passengers

²⁾ SLF = RPK / ASK
deviation in % pts

³⁾ Including mail
deviation in % pts

Traffic Statistics June 2005 LX Scheduled Services



Swiss
International
Air Lines

| | June | | Cumulative | |
|---|---------|------|------------|------|
| | 2005 | 2004 | 2005 | 2004 |
| Number of Passengers ¹⁾ | | | | |
| Europe | 610'949 | | 3'444'315 | |
| Intercontinental | 185'663 | | 1'120'664 | |
| Total | 796'612 | | 4'564'979 | |
| Flights | | | | |
| Europe | 10'574 | | 63'856 | |
| Intercontinental | 1'282 | | 8'129 | |
| Total | 11'856 | | 71'985 | |
| Available Seat km (ASK, in mill) | | | | |
| Europe | 707 | | 4'231 | |
| Intercontinental | 1'547 | | 9'727 | |
| Total | 2'254 | | 13'958 | |
| Revenue Passenger km (RPK, in mill) | | | | |
| Europe | 462 | | 2'551 | |
| Intercontinental | 1'261 | | 7'698 | |
| Total | 1'724 | | 10'249 | |
| Seat Load Factor (SLF %) ²⁾ | | | | |
| Europe | 65.4% | | 60.3% | |
| Intercontinental | 81.5% | | 79.1% | |
| Total | 76.5% | | 73.4% | |
| Freight Load Factor (%) ³⁾ | | | | |
| Intercontinental | 86.9% | | 85.9% | |
| Freight Tonnes Kilometers (FTK, in 1000) | | | | |
| Intercontinental | 95'382 | | 566'816 | |

¹⁾ Revenue Passengers

²⁾ SLF = RPK / ASK
deviation in % pts

³⁾ Including mail
deviation in % pts

Traffic Statistics July 2005 LX Scheduled Services



Swiss
International
Air Lines

| | July | | Cumulative | |
|---|---------|------|------------|------|
| | 2005 | 2004 | 2005 | 2004 |
| Number of Passengers ¹⁾ | | | | |
| Europe | 616'782 | | 4'061'097 | |
| Intercontinental | 199'166 | | 1'319'830 | |
| Total | 815'948 | | 5'380'927 | |
| Flights | | | | |
| Europe | 10'889 | | 74'745 | |
| Intercontinental | 1'332 | | 9'461 | |
| Total | 12'221 | | 84'206 | |
| Available Seat km (ASK, in mill) | | | | |
| Europe | 725 | | 4'956 | |
| Intercontinental | 1'603 | | 11'330 | |
| Total | 2'328 | | 16'286 | |
| Revenue Passenger km (RPK, in mill) | | | | |
| Europe | 477 | | 3'029 | |
| Intercontinental | 1'350 | | 9'048 | |
| Total | 1'827 | | 12'076 | |
| Seat Load Factor (SLF %) ²⁾ | | | | |
| Europe | 65.9% | | 61.1% | |
| Intercontinental | 84.2% | | 79.9% | |
| Total | 78.5% | | 74.2% | |
| Freight Load Factor (%) ³⁾ | | | | |
| Intercontinental | 86.0% | | 85.9% | |
| Freight Tonnes Kilometers (FTK, in 1000) | | | | |
| Intercontinental | 94'999 | | 661'815 | |

¹⁾ Revenue Passengers

²⁾ SLF = RPK / ASK
deviation in % pts

³⁾ Including mail
deviation in % pts

Traffic Statistics August 2005 LX Scheduled Services



Swiss
International
Air Lines

| | August | | Cumulative | |
|---|-----------|------|------------|------|
| | 2005 | 2004 | 2005 | 2004 |
| Number of Passengers ¹⁾ | | | | |
| Europe | 736'117 | | 5'437'242 | |
| Intercontinental | 265'112 | | 1'854'085 | |
| Total | 1'001'229 | | 7'291'327 | |
| Flights | | | | |
| Europe | 13'864 | | 121'705 | |
| Intercontinental | 1'803 | | 13'999 | |
| Total | 15'667 | | 135'704 | |
| Available Seat km (ASK, in mill) | | | | |
| Europe | 847 | | 7'282 | |
| Intercontinental | 2'034 | | 15'943 | |
| Total | 2'881 | | 23'224 | |
| Revenue Passenger km (RPK, in mill) | | | | |
| Europe | 592 | | 4'223 | |
| Intercontinental | 1'725 | | 12'309 | |
| Total | 2'317 | | 16'531 | |
| Seat Load Factor (SLF %) ²⁾ | | | | |
| Europe | 69.9% | | 58.0% | |
| Intercontinental | 84.8% | | 77.2% | |
| Total | 80.4% | | 71.2% | |
| Freight Load Factor (%) ³⁾ | | | | |
| Intercontinental | 79.7% | | 83.4% | |
| Freight Tonnes Kilometers (FTK, in 1000) | | | | |
| Intercontinental | 97'449 | | 866'094 | |

¹⁾ Revenue Passengers

²⁾ SLF = RPK / ASK
deviation in % pts

³⁾ Including mail
deviation in % pts

Traffic Statistics September 2005 LX Scheduled Services



Swiss
International
Air Lines

| | September | | Cumulative | |
|---|-----------|------|------------|------|
| | 2005 | 2004 | 2005 | 2004 |
| Number of Passengers ¹⁾ | | | | |
| Europe | 618'408 | | 5'291'463 | |
| Intercontinental | 191'552 | | 1'718'639 | |
| Total | 809'960 | | 7'010'102 | |
| Flights | | | | |
| Europe | 10'670 | | 96'061 | |
| Intercontinental | 1'277 | | 12'071 | |
| Total | 11'947 | | 108'132 | |
| Available Seat km (ASK, in mill) | | | | |
| Europe | 709 | | 6'392 | |
| Intercontinental | 1'533 | | 14'465 | |
| Total | 2'242 | | 20'856 | |
| Revenue Passenger km (RPK, in mill) | | | | |
| Europe | 463 | | 3'971 | |
| Intercontinental | 1'285 | | 11'703 | |
| Total | 1'748 | | 15'674 | |
| Seat Load Factor (SLF %) ²⁾ | | | | |
| Europe | 65.3% | | 62.1% | |
| Intercontinental | 83.8% | | 80.9% | |
| Total | 78.0% | | 75.2% | |
| Freight Load Factor (%) ³⁾ | | | | |
| Intercontinental | 86.1% | | 85.8% | |
| Freight Tonnes Kilometers (FTK, in 1000) | | | | |
| Intercontinental | 91'731 | | 845'914 | |

¹⁾ Revenue Passengers

²⁾ SLF = RPK / ASK
deviation in % pts

³⁾ Including mail
deviation in % pts

Traffic Statistics October 2005 LX Scheduled Services



Swiss
International
Air Lines

| | October | | Cumulative | |
|---|---------|------|------------|------|
| | 2005 | 2004 | 2005 | 2004 |
| Number of Passengers ¹⁾ | | | | |
| Europe | 615'779 | | 5'907'242 | |
| Intercontinental | 199'213 | | 1'917'852 | |
| Total | 814'992 | | 7'825'094 | |
| Flights | | | | |
| Europe | 10'902 | | 106'963 | |
| Intercontinental | 1'324 | | 13'395 | |
| Total | 12'226 | | 120'358 | |
| Available Seat km (ASK, in mill) | | | | |
| Europe | 724 | | 7'116 | |
| Intercontinental | 1'599 | | 16'064 | |
| Total | 2'323 | | 23'179 | |
| Revenue Passenger km (RPK, in mill) | | | | |
| Europe | 460 | | 4'431 | |
| Intercontinental | 1'345 | | 13'047 | |
| Total | 1'805 | | 17'479 | |
| Seat Load Factor (SLF %) ²⁾ | | | | |
| Europe | 63.6% | | 62.3% | |
| Intercontinental | 84.1% | | 81.2% | |
| Total | 77.7% | | 75.4% | |
| Freight Load Factor (%) ³⁾ | | | | |
| Intercontinental | 88.0% | | 86.0% | |
| Freight Tonnes Kilometers (FTK, in 1000) | | | | |
| Intercontinental | 100'034 | | 945'948 | |

¹⁾ Revenue Passengers

²⁾ SLF = RPK / ASK
deviation in % pts

³⁾ Including mail
deviation in % pts

Traffic Statistics November 2005 LX Scheduled Services



Swiss
International
Air Lines

| | November | | Cumulative | |
|---|----------------|------|------------------|------|
| | 2005 | 2004 | 2005 | 2004 |
| Number of Passengers ¹⁾ | | | | |
| Europe | 492'037 | | 6'399'279 | |
| Intercontinental | 174'263 | | 2'092'115 | |
| Total | 666'300 | | 8'491'394 | |
| Flights | | | | |
| Europe | 10'504 | | 117'467 | |
| Intercontinental | 1'278 | | 14'673 | |
| Total | 11'782 | | 132'140 | |
| Available Seat km (ASK, in mill) | | | | |
| Europe | 689 | | 7'804 | |
| Intercontinental | 1'447 | | 17'511 | |
| Total | 2'136 | | 25'315 | |
| Revenue Passenger km (RPK, in mill) | | | | |
| Europe | 351 | | 4'782 | |
| Intercontinental | 1'174 | | 14'221 | |
| Total | 1'525 | | 19'004 | |
| Seat Load Factor (SLF %) ²⁾ | | | | |
| Europe | 51.0% | | 61.3% | |
| Intercontinental | 81.1% | | 81.2% | |
| Total | 71.4% | | 75.1% | |
| Freight Load Factor (%) ³⁾ | | | | |
| Intercontinental | 88.5% | | 86.3% | |
| Freight Tonnes Kilometers (FTK, in 1000) | | | | |
| Intercontinental | 97'757 | | 1'043'705 | |

¹⁾ Revenue Passengers

²⁾ SLF = RPK / ASK
deviation in % pts

³⁾ Including mail
deviation in % pts

Traffic Statistics December 2005 LX Scheduled Services



Swiss
International
Air Lines

| | December | | Cumulative | |
|---|----------|------|------------|------|
| | 2005 | 2004 | 2005 | 2004 |
| Number of Passengers ¹⁾ | | | | |
| Europe | 516'269 | | 6'915'548 | |
| Intercontinental | 180'093 | | 2'272'208 | |
| Total | 696'362 | | 9'187'756 | |
| Flights | | | | |
| Europe | 10'192 | | 127'659 | |
| Intercontinental | 1'318 | | 15'991 | |
| Total | 11'510 | | 143'650 | |
| Available Seat km (ASK, in mill) | | | | |
| Europe | 688 | | 8'492 | |
| Intercontinental | 1'479 | | 18'990 | |
| Total | 2'167 | | 27'483 | |
| Revenue Passenger km (RPK, in mill) | | | | |
| Europe | 381 | | 5'164 | |
| Intercontinental | 1'210 | | 15'432 | |
| Total | 1'592 | | 20'596 | |
| Seat Load Factor (SLF %) ²⁾ | | | | |
| Europe | 55.5% | | 60.8% | |
| Intercontinental | 81.8% | | 81.3% | |
| Total | 73.5% | | 74.9% | |
| Freight Load Factor (%) ³⁾ | | | | |
| Intercontinental | 87.2% | | 86.3% | |
| Freight Tonnes Kilometers (FTK, in 1000) | | | | |
| Intercontinental | 97'713 | | 1'141'418 | |

¹⁾ Revenue Passengers

²⁾ SLF = RPK / ASK
deviation in % pts

³⁾ Including mail
deviation in % pts