

# SWISS traffic figures

January 2005



## SWISS raises January seat load factor

SWISS's seat load factor for January 2005 was a 2.7-percentage-point improvement on the same month a year ago. Systemwide seat load factor amounted to 72.9%. The positive load factor trend seen on intercontinental routes since March 2004 continued in January: the 81.6% seat load factor posted for intercontinental services was 3.8 percentage points up on the prior-year period. Seat load factor increased on the European network, too: the 54.2% recorded for the month was a 2.7-percentage-point improvement on January 2004. SWISS carried a total of 688 666 passengers on its scheduled services in January 2005.

Seat load factor on *intercontinental services* amounted to 81.6%, compared to 77.8% for the same month last year. Available seat kilometre (ASK) production for the month was 13.0% below prior-year levels, while revenue passenger kilometre (RPK) traffic declined by only 8.8%.

Seat load factors showed positive trends in almost all long-haul traffic regions. North Atlantic services registered a seat load factor of 82.7%, up 6.5 percentage points. Seat load factor on Far East routes remained broadly at its prior-year level: the 83.1% recorded was a slight decline of 0.2 percentage points. Services to the Middle East posted a seat load factor of 74.6%, a rise of 8.0 percentage points. Flights to Africa reported a seat load factor of 77.5%, an increase of 6.5 percentage points. Seat load factor for South American services declined 2.4 percentage points, but remained high at 87.7%.

January seat load factor on *European services* stood at 54.2%, a 2.7-percentage-point improvement on the same period last year. While available seat kilometre (ASK) production for the month was 1.8% down on January 2004, revenue passenger kilometre (RPK) traffic was 3.3% up on the prior-year period.

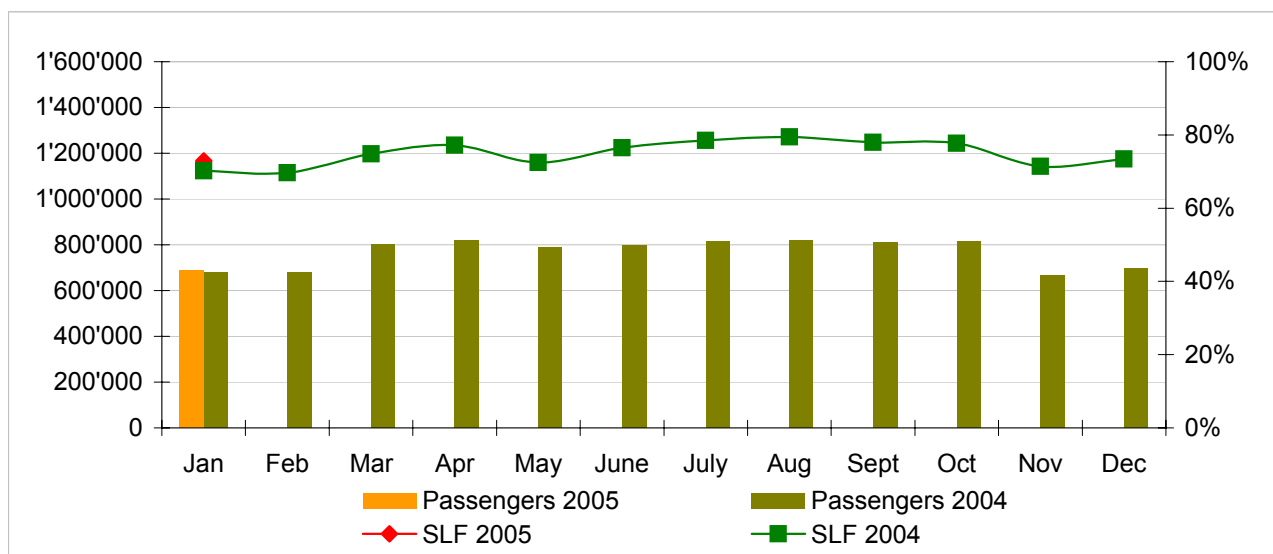
The increasing pressure from competitors, and from low-cost carriers in particular, continued to press on SWISS's European seat load factors. But with specific marketing and sales promotions, SWISS increased in its seat load factor for January – the first year-on-year improvement in European monthly seat load factor since May 2004.

## Traffic Statistics January-December 2005 LX Scheduled Services



	Passengers Europe	Passengers Intercontinental	Passengers Total	SLF Europe	SLF Intercontinental	SLF Total
Jan	505'995	182'671	688'666	54.2%	81.6%	72.9%
Feb						
Mar						
Apr						
May						
Jun						
Jul						
Aug						
Sep						
Oct						
Nov						
Dec						

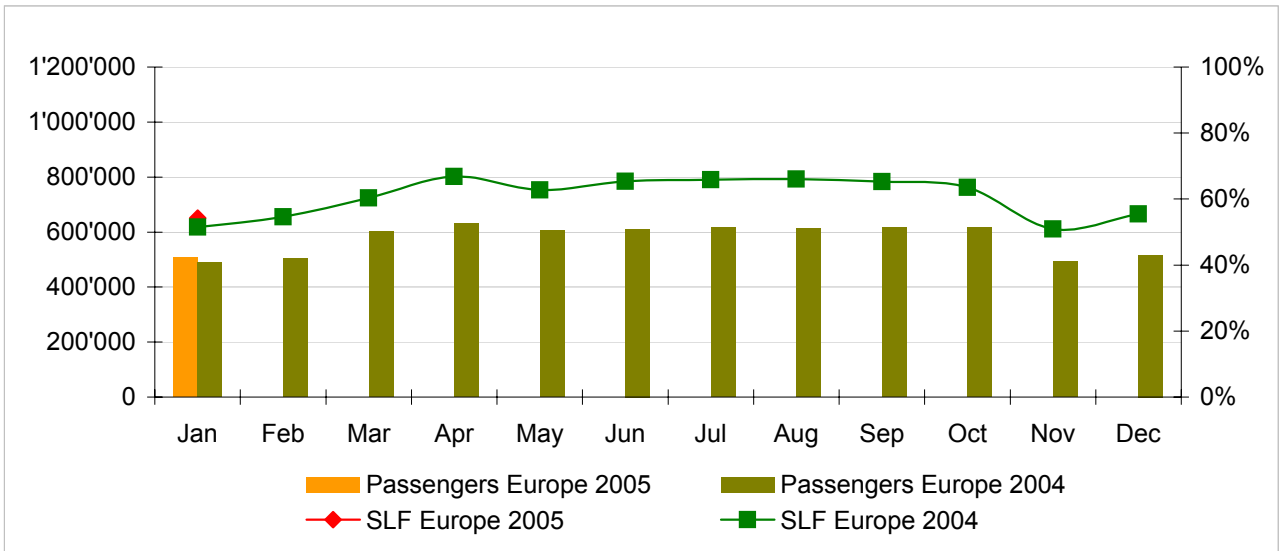
### Comparison Passengers and Seat Load Factor (SLF %) versus prior year



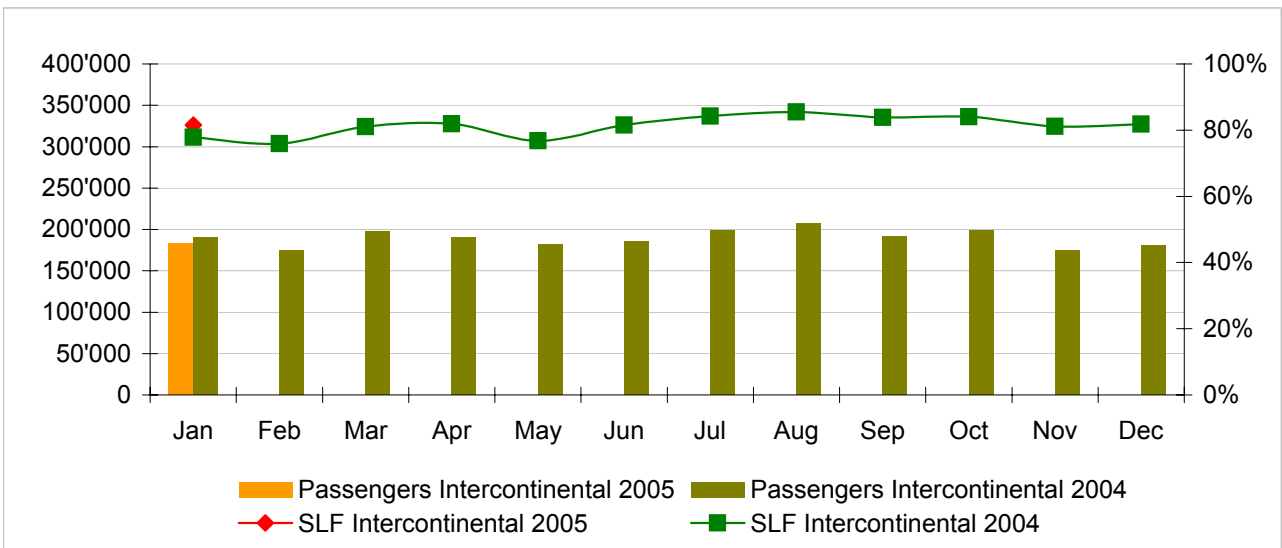
#### Next updates:

- February 05 figures      March 10th, 2005
- March 05 figures        April 12th, 2005
- April 05 figures         May 10th, 2005

**Passengers and Seat Load Factor (SLF %) European Routes**  
Comparison versus prior year



**Passengers and Seat Load Factor (SLF %) Intercontinental Routes**  
Comparison versus prior year



## Traffic Statistics January 2005 LX Scheduled Services



Swiss  
International  
Air Lines

	January			Cumulative		
	2005	2004		2005	2004	
<b>Number of Passengers <sup>1)</sup></b>						
Europe	505'995	488'989	3.5%	505'995	488'989	3.5%
Intercontinental	182'671	190'710	-4.2%	182'671	190'710	-4.2%
Total	688'666	679'699	1.3%	688'666	679'699	1.3%
<b>Flights</b>						
Europe	10'241	10'640	-3.8%	10'241	10'640	-3.8%
Intercontinental	1'366	1'446	-5.5%	1'366	1'446	-5.5%
Total	11'607	12'086	-4.0%	11'607	12'086	-4.0%
<b>Available Seat km (ASK, in mill)</b>						
Europe	690	703	-1.8%	690	703	-1.8%
Intercontinental	1'500	1'724	-13.0%	1'500	1'724	-13.0%
Total	2'190	2'427	-9.8%	2'190	2'427	-9.8%
<b>Revenue Passenger km (RPK, in mill)</b>						
Europe	374	362	3.3%	374	362	3.3%
Intercontinental	1'223	1'341	-8.8%	1'223	1'341	-8.8%
Total	1'597	1'704	-6.2%	1'597	1'704	-6.2%
<b>Seat Load Factor (SLF %) <sup>2)</sup></b>						
Europe	54.2%	51.5%	2.7%	54.2%	51.5%	2.7%
Intercontinental	81.6%	77.8%	3.8%	81.6%	77.8%	3.8%
Total	72.9%	70.2%	2.7%	72.9%	70.2%	2.7%
<b>Estimate Freight Load Factor (%) <sup>3)</sup></b>						
Intercontinental	81.0%	80.0%	1.0%	81.0%	80.0%	1.0%
<b>Estimate Freight Tonnes Kilometers (FTK, in 1000)</b>						
Intercontinental	88'810	85'117	4.3%	88'810	85'117	4.3%

<sup>1)</sup> Revenue Passengers

<sup>2)</sup> SLF = RPK / ASK  
deviation in % pts

<sup>3)</sup> Including mail  
deviation in % pts

## Traffic Statistics February 2005 LX Scheduled Services



Swiss  
International  
Air Lines

	February		Cumulative	
	2005	2004	2005	2004
<b>Number of Passengers <sup>1)</sup></b>				
Europe	504'960		993'949	
Intercontinental	173'962		364'672	
Total	678'922		1'358'621	
<b>Flights</b>				
Europe	10'149		20'789	
Intercontinental	1'352		2'798	
Total	11'501		23'587	
<b>Available Seat km (ASK, in mill)</b>				
Europe	669		1'372	
Intercontinental	1'603		3'327	
Total	2'272		4'699	
<b>Revenue Passenger km (RPK, in mill)</b>				
Europe	365		727	
Intercontinental	1'217		2'558	
Total	1'582		3'285	
<b>Seat Load Factor (SLF %) <sup>2)</sup></b>				
Europe	54.6%		53.0%	
Intercontinental	75.9%		76.9%	
Total	69.6%		69.9%	
<b>Freight Load Factor (%) <sup>3)</sup></b>				
Intercontinental	90.0%		85.0%	
<b>Freight Tonnes Kilometers (FTK, in 1000)</b>				
Intercontinental	97'771		182'888	

<sup>1)</sup> Revenue Passengers

<sup>2)</sup> SLF = RPK / ASK  
deviation in % pts

<sup>3)</sup> Including mail  
deviation in % pts

## Traffic Statistics March 2005 LX Scheduled Services



Swiss  
International  
Air Lines

	March		Cumulative	
	2005	2004	2005	2004
<b>Number of Passengers <sup>1)</sup></b>				
Europe	602'964		1'596'913	
Intercontinental	198'178		562'850	
Total	801'142		2'159'763	
<b>Flights</b>				
Europe	10'988		31'777	
Intercontinental	1'419		4'217	
Total	12'407		35'994	
<b>Available Seat km (ASK, in mill)</b>				
Europe	729		2'101	
Intercontinental	1'686		5'012	
Total	2'414		7'113	
<b>Revenue Passenger km (RPK, in mill)</b>				
Europe	440		1'167	
Intercontinental	1'367		3'925	
Total	1'806		5'092	
<b>Seat Load Factor (SLF %) <sup>2)</sup></b>				
Europe	60.3%		55.5%	
Intercontinental	81.1%		78.3%	
Total	74.8%		71.6%	
<b>Freight Load Factor (%) <sup>3)</sup></b>				
Intercontinental	91.0%		87.0%	
<b>Freight Tonnes Kilometers (FTK, in 1000)</b>				
Intercontinental	104'478		287'366	

<sup>1)</sup> Revenue Passengers

<sup>2)</sup> SLF = RPK / ASK  
deviation in % pts

<sup>3)</sup> Including mail  
deviation in % pts

## Traffic Statistics April 2005 LX Scheduled Services



Swiss  
International  
Air Lines

	April		Cumulative	
	2005	2004	2005	2004
<b>Number of Passengers <sup>1)</sup></b>				
Europe	629'871		2'226'784	
Intercontinental	189'881		752'731	
Total	819'752		2'979'515	
<b>Flights</b>				
Europe	10'622		42'399	
Intercontinental	1'299		5'516	
Total	11'921		47'915	
<b>Available Seat km (ASK, in mill)</b>				
Europe	705		2'806	
Intercontinental	1'561		6'573	
Total	2'266		9'379	
<b>Revenue Passenger km (RPK, in mill)</b>				
Europe	471		1'638	
Intercontinental	1'278		5'203	
Total	1'749		6'841	
<b>Seat Load Factor (SLF %) <sup>2)</sup></b>				
Europe	66.8%		58.4%	
Intercontinental	81.9%		79.2%	
Total	77.2%		72.9%	
<b>Freight Load Factor (%) <sup>3)</sup></b>				
Intercontinental	83.0%		86.0%	
<b>Freight Tonnes Kilometers (FTK, in 1000)</b>				
Intercontinental	88'759		376'125	

<sup>1)</sup> Revenue Passengers

<sup>2)</sup> SLF = RPK / ASK  
deviation in % pts

<sup>3)</sup> Including mail  
deviation in % pts

## Traffic Statistics May 2005 LX Scheduled Services



Swiss  
International  
Air Lines

	May		Cumulative	
	2005	2004	2005	2004
<b>Number of Passengers <sup>1)</sup></b>				
Europe	606'582		2'833'366	
Intercontinental	182'270		935'001	
Total	788'852		3'768'367	
<b>Flights</b>				
Europe	10'883		53'282	
Intercontinental	1'331		6'847	
Total	12'214		60'129	
<b>Available Seat km (ASK, in mill)</b>				
Europe	718		3'524	
Intercontinental	1'607		8'180	
Total	2'325		11'704	
<b>Revenue Passenger km (RPK, in mill)</b>				
Europe	451		2'089	
Intercontinental	1'234		6'437	
Total	1'685		8'526	
<b>Seat Load Factor (SLF %) <sup>2)</sup></b>				
Europe	62.8%		59.3%	
Intercontinental	76.8%		78.7%	
Total	72.5%		72.8%	
<b>Freight Load Factor (%) <sup>3)</sup></b>				
Intercontinental	84.7%		85.7%	
<b>Freight Tonnes Kilometers (FTK, in 1000)</b>				
Intercontinental	95'309		471'434	

<sup>1)</sup> Revenue Passengers

<sup>2)</sup> SLF = RPK / ASK  
deviation in % pts

<sup>3)</sup> Including mail  
deviation in % pts

## Traffic Statistics June 2005 LX Scheduled Services



Swiss  
International  
Air Lines

	June		Cumulative	
	2005	2004	2005	2004
<b>Number of Passengers <sup>1)</sup></b>				
Europe	610'949		3'444'315	
Intercontinental	185'663		1'120'664	
Total	796'612		4'564'979	
<b>Flights</b>				
Europe	10'574		63'856	
Intercontinental	1'282		8'129	
Total	11'856		71'985	
<b>Available Seat km (ASK, in mill)</b>				
Europe	707		4'231	
Intercontinental	1'547		9'727	
Total	2'254		13'958	
<b>Revenue Passenger km (RPK, in mill)</b>				
Europe	462		2'551	
Intercontinental	1'261		7'698	
Total	1'724		10'249	
<b>Seat Load Factor (SLF %) <sup>2)</sup></b>				
Europe	65.4%		60.3%	
Intercontinental	81.5%		79.1%	
Total	76.5%		73.4%	
<b>Freight Load Factor (%) <sup>3)</sup></b>				
Intercontinental	86.9%		85.9%	
<b>Freight Tonnes Kilometers (FTK, in 1000)</b>				
Intercontinental	95'382		566'816	

<sup>1)</sup> Revenue Passengers

<sup>2)</sup> SLF = RPK / ASK  
deviation in % pts

<sup>3)</sup> Including mail  
deviation in % pts

## Traffic Statistics July 2005 LX Scheduled Services



Swiss  
International  
Air Lines

	July		Cumulative	
	2005	2004	2005	2004
<b>Number of Passengers <sup>1)</sup></b>				
Europe	616'782		4'061'097	
Intercontinental	199'166		1'319'830	
Total	815'948		5'380'927	
<b>Flights</b>				
Europe	10'889		74'745	
Intercontinental	1'332		9'461	
Total	12'221		84'206	
<b>Available Seat km (ASK, in mill)</b>				
Europe	725		4'956	
Intercontinental	1'603		11'330	
Total	2'328		16'286	
<b>Revenue Passenger km (RPK, in mill)</b>				
Europe	477		3'029	
Intercontinental	1'350		9'048	
Total	1'827		12'076	
<b>Seat Load Factor (SLF %) <sup>2)</sup></b>				
Europe	65.9%		61.1%	
Intercontinental	84.2%		79.9%	
Total	78.5%		74.2%	
<b>Freight Load Factor (%) <sup>3)</sup></b>				
Intercontinental	86.0%		85.9%	
<b>Freight Tonnes Kilometers (FTK, in 1000)</b>				
Intercontinental	94'999		661'815	

<sup>1)</sup> Revenue Passengers

<sup>2)</sup> SLF = RPK / ASK  
deviation in % pts

<sup>3)</sup> Including mail  
deviation in % pts

## Traffic Statistics August 2005 LX Scheduled Services



Swiss  
International  
Air Lines

	August		Cumulative	
	2005	2004	2005	2004
<b>Number of Passengers <sup>1)</sup></b>				
Europe	736'117		5'437'242	
Intercontinental	265'112		1'854'085	
Total	1'001'229		7'291'327	
<b>Flights</b>				
Europe	13'864		121'705	
Intercontinental	1'803		13'999	
Total	15'667		135'704	
<b>Available Seat km (ASK, in mill)</b>				
Europe	847		7'282	
Intercontinental	2'034		15'943	
Total	2'881		23'224	
<b>Revenue Passenger km (RPK, in mill)</b>				
Europe	592		4'223	
Intercontinental	1'725		12'309	
Total	2'317		16'531	
<b>Seat Load Factor (SLF %) <sup>2)</sup></b>				
Europe	69.9%		58.0%	
Intercontinental	84.8%		77.2%	
Total	80.4%		71.2%	
<b>Freight Load Factor (%) <sup>3)</sup></b>				
Intercontinental	79.7%		83.4%	
<b>Freight Tonnes Kilometers (FTK, in 1000)</b>				
Intercontinental	97'449		866'094	

<sup>1)</sup> Revenue Passengers

<sup>2)</sup> SLF = RPK / ASK  
deviation in % pts

<sup>3)</sup> Including mail  
deviation in % pts

## Traffic Statistics September 2005 LX Scheduled Services



Swiss  
International  
Air Lines

	September		Cumulative	
	2005	2004	2005	2004
<b>Number of Passengers <sup>1)</sup></b>				
Europe	618'408		5'291'463	
Intercontinental	191'552		1'718'639	
Total	809'960		7'010'102	
<b>Flights</b>				
Europe	10'670		96'061	
Intercontinental	1'277		12'071	
Total	11'947		108'132	
<b>Available Seat km (ASK, in mill)</b>				
Europe	709		6'392	
Intercontinental	1'533		14'465	
Total	2'242		20'856	
<b>Revenue Passenger km (RPK, in mill)</b>				
Europe	463		3'971	
Intercontinental	1'285		11'703	
Total	1'748		15'674	
<b>Seat Load Factor (SLF %) <sup>2)</sup></b>				
Europe	65.3%		62.1%	
Intercontinental	83.8%		80.9%	
Total	78.0%		75.2%	
<b>Freight Load Factor (%) <sup>3)</sup></b>				
Intercontinental	86.1%		85.8%	
<b>Freight Tonnes Kilometers (FTK, in 1000)</b>				
Intercontinental	91'731		845'914	

<sup>1)</sup> Revenue Passengers

<sup>2)</sup> SLF = RPK / ASK  
deviation in % pts

<sup>3)</sup> Including mail  
deviation in % pts

## Traffic Statistics October 2005 LX Scheduled Services



	October		Cumulative	
	2005	2004	2005	2004
<b>Number of Passengers <sup>1)</sup></b>				
Europe	615'779		5'907'242	
Intercontinental	199'213		1'917'852	
<b>Total</b>	<b>814'992</b>		<b>7'825'094</b>	
<b>Flights</b>				
Europe	10'902		106'963	
Intercontinental	1'324		13'395	
<b>Total</b>	<b>12'226</b>		<b>120'358</b>	
<b>Available Seat km (ASK, in mill)</b>				
Europe	724		7'116	
Intercontinental	1'599		16'064	
<b>Total</b>	<b>2'323</b>		<b>23'179</b>	
<b>Revenue Passenger km (RPK, in mill)</b>				
Europe	460		4'431	
Intercontinental	1'345		13'047	
<b>Total</b>	<b>1'805</b>		<b>17'479</b>	
<b>Seat Load Factor (SLF %) <sup>2)</sup></b>				
Europe	63.6%		62.3%	
Intercontinental	84.1%		81.2%	
<b>Total</b>	<b>77.7%</b>		<b>75.4%</b>	
<b>Freight Load Factor (%) <sup>3)</sup></b>				
Intercontinental	88.0%		86.0%	
<b>Freight Tonnes Kilometers (FTK, in 1000)</b>				
Intercontinental	100'034		945'948	

<sup>1)</sup> Revenue Passengers

<sup>2)</sup> SLF = RPK / ASK  
deviation in % pts

<sup>3)</sup> Including mail  
deviation in % pts

## Traffic Statistics November 2005 LX Scheduled Services



Swiss  
International  
Air Lines

	November		Cumulative	
	2005	2004	2005	2004
<b>Number of Passengers <sup>1)</sup></b>				
Europe	492'037		6'399'279	
Intercontinental	174'263		2'092'115	
Total	666'300		8'491'394	
<b>Flights</b>				
Europe	10'504		117'467	
Intercontinental	1'278		14'673	
Total	11'782		132'140	
<b>Available Seat km (ASK, in mill)</b>				
Europe	689		7'804	
Intercontinental	1'447		17'511	
Total	2'136		25'315	
<b>Revenue Passenger km (RPK, in mill)</b>				
Europe	351		4'782	
Intercontinental	1'174		14'221	
Total	1'525		19'004	
<b>Seat Load Factor (SLF %) <sup>2)</sup></b>				
Europe	51.0%		61.3%	
Intercontinental	81.1%		81.2%	
Total	71.4%		75.1%	
<b>Freight Load Factor (%) <sup>3)</sup></b>				
Intercontinental	88.5%		86.3%	
<b>Freight Tonnes Kilometers (FTK, in 1000)</b>				
Intercontinental	97'757		1'043'705	

<sup>1)</sup> Revenue Passengers

<sup>2)</sup> SLF = RPK / ASK  
deviation in % pts

<sup>3)</sup> Including mail  
deviation in % pts

## Traffic Statistics December 2005 LX Scheduled Services



Swiss  
International  
Air Lines

	December		Cumulative	
	2005	2004	2005	2004
<b>Number of Passengers <sup>1)</sup></b>				
Europe	516'269		6'915'548	
Intercontinental	180'093		2'272'208	
Total	696'362		9'187'756	
<b>Flights</b>				
Europe	10'192		127'659	
Intercontinental	1'318		15'991	
Total	11'510		143'650	
<b>Available Seat km (ASK, in mill)</b>				
Europe	688		8'492	
Intercontinental	1'479		18'990	
Total	2'167		27'483	
<b>Revenue Passenger km (RPK, in mill)</b>				
Europe	381		5'164	
Intercontinental	1'210		15'432	
Total	1'592		20'596	
<b>Seat Load Factor (SLF %) <sup>2)</sup></b>				
Europe	55.5%		60.8%	
Intercontinental	81.8%		81.3%	
Total	73.5%		74.9%	
<b>Freight Load Factor (%) <sup>3)</sup></b>				
Intercontinental	87.2%		86.3%	
<b>Freight Tonnes Kilometers (FTK, in 1000)</b>				
Intercontinental	97'713		1'141'418	

<sup>1)</sup> Revenue Passengers

<sup>2)</sup> SLF = RPK / ASK  
deviation in % pts

<sup>3)</sup> Including mail  
deviation in % pts