

SWISS traffic figures

January to June 2005



SWISS substantially raises seat load factor for the first six months

SWISS increased its seat load factor for the first six months of 2005 by 3.5 percentage points, compared to the same period last year. Average systemwide seat load factor amounted to 76.9%. Seat load factor on intercontinental services was increased by 4.1 percentage points to 83.2%. And seat load factor on SWISS's European network totalled 63.8%, a 3.5-percentage-point improvement on the prior-year period. SWISS carried a total of 4.69 million passengers in the first half of 2005, a 2.7% increase on the same period last year.

Systemwide seat load factor for the month of June 2005 amounted to 81.5%, a 5.0-percentage-point improvement on the same month last year. Intercontinental seat load factor for the month was 5.7 percentage points up at 87.2%, while European seat load factor rose 4.6 percentage points to 70.0%.

June seat load factor on *intercontinental services* amounted to 87.2%, compared to 81.5% for the same month last year. Available seat kilometre (ASK) capacity was 4.4% below prior-year levels; but revenue passenger kilometre (RPK) traffic was a 2.2% improvement on June 2004.

Most traffic regions contributed to the increase in intercontinental seat load factor levels. North Atlantic services posted a very high seat load factor of 94.0%, up 2.3 percentage points, while seat load factor on Far East routes rose 7.4 percentage points to 86.9%. As it had in May, seat load factor on Middle East services posted a strong increase – up 18.3 percentage points – to stand at 79.7%. The surge in traffic to and from the region is due partly to a general rise in demand but also to the withdrawal of a competitor from the London-Riyadh route, with SWISS benefiting from the resulting reduction in capacity. Services to Africa posted a seat load factor of 75.6%, up 7.4 percentage points. Seat load factor on South America services showed a slight 0.8-percentage-point decline to 83.5%.

June seat load factor on *European services* amounted to 70.0%, up 4.6 percentage points on its prior-year level. ASK capacity for the European network was 2.5% up on June 2004. The additional production was more than absorbed, with RPK traffic for the month posting a far stronger year-on-year increase of 9.8%.

As it had done in previous months, SWISS increased its European capacity in June 2005 (in year-on-year terms) while reducing its total number of flights, which was 5.3% below June 2004 levels. SWISS is tending to use larger aircraft on its European services in order to compete more effectively, especially against the low-cost carriers. In expanding its seat capacity, SWISS is also strengthening its competitive position at its Zurich Airport hub.

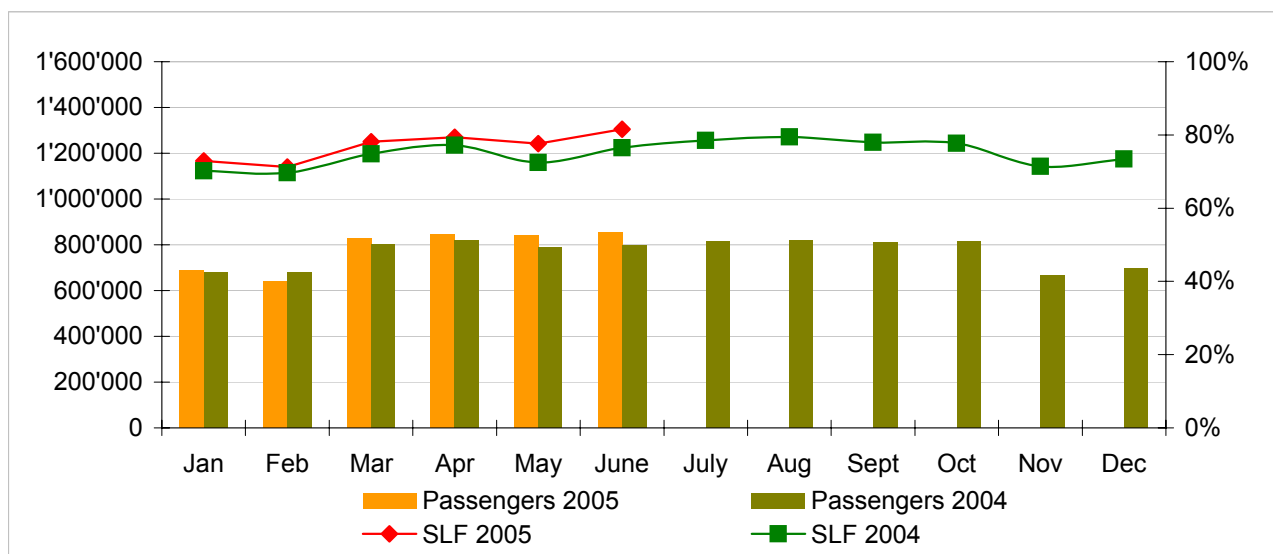
The *cargo business* of SWISS's Swiss WorldCargo unit reported positive overall trends for the first half of 2005. Cargo load factor (by volume) for the first six months stood at 86.1%, an increase of 0.2 percentage points on the same period last year.

Traffic Statistics January-December 2005 LX Scheduled Services



	Passengers Europe	Passengers Intercontinental	Passengers Total	SLF Europe	SLF Intercontinental	SLF Total
Jan	505'995	182'671	688'666	54.2%	81.6%	72.9%
Feb	484'640	154'540	639'180	55.6%	78.7%	71.2%
Mar	640'333	185'569	825'902	65.7%	84.2%	78.1%
Apr	654'672	188'133	842'805	67.8%	85.0%	79.4%
May	650'951	187'997	838'948	68.0%	82.2%	77.6%
Jun	661'327	191'291	852'618	70.0%	87.2%	81.5%
Jul						
Aug						
Sep						
Oct						
Nov						
Dec						

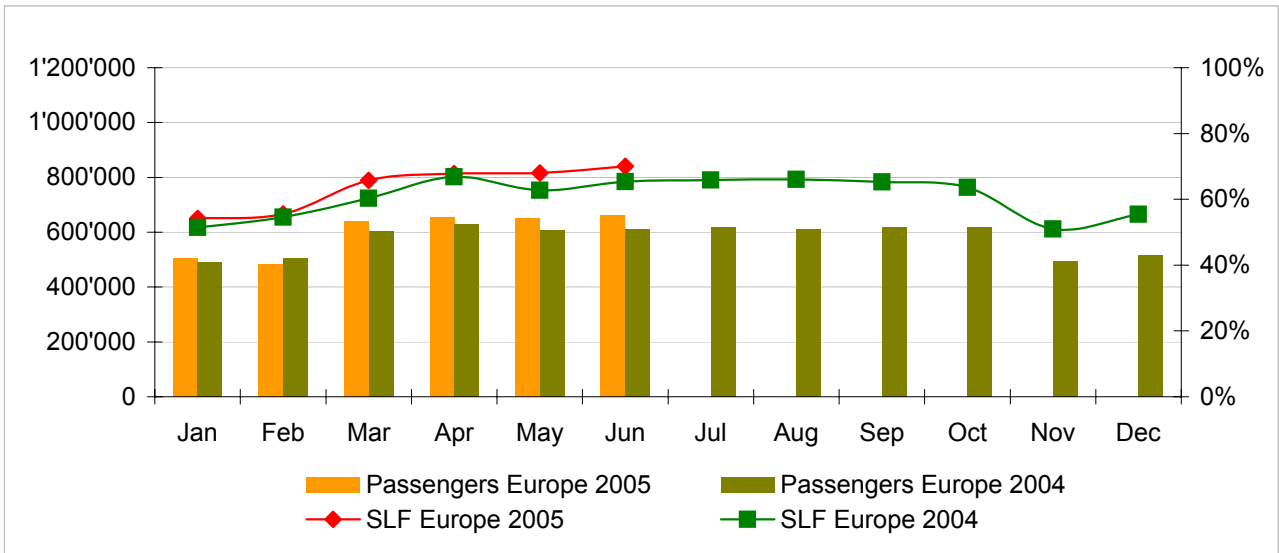
Comparison Passengers and Seat Load Factor (SLF %) versus prior year



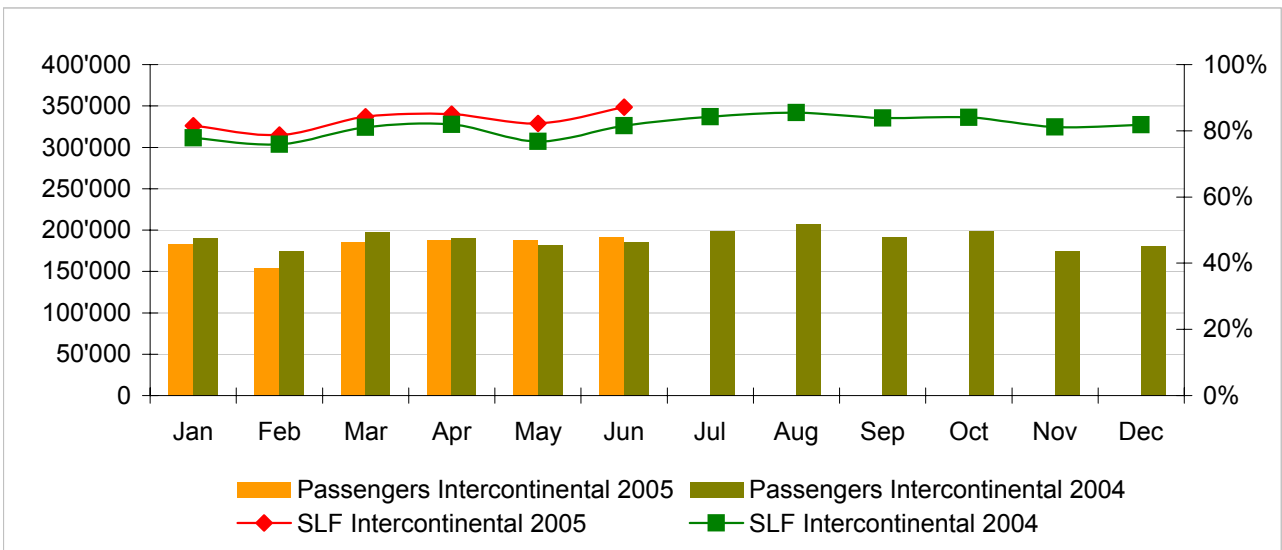
Next updates:

- July 05 figures August 10, 2005
- August 05 figures September 13, 2005
- September 05 figures October 11, 2005

Passengers and Seat Load Factor (SLF %) European Routes
 Comparison versus prior year



Passengers and Seat Load Factor (SLF %) Intercontinental Routes
 Comparison versus prior year



Traffic Statistics January 2005 LX Scheduled Services



Swiss
International
Air Lines

	January			Cumulative		
	2005	2004		2005	2004	
Number of Passengers ¹⁾						
Europe	505'995	488'989	3.5%	505'995	488'989	3.5%
Intercontinental	182'671	190'710	-4.2%	182'671	190'710	-4.2%
Total	688'666	679'699	1.3%	688'666	679'699	1.3%
Flights						
Europe	10'241	10'640	-3.8%	10'241	10'640	-3.8%
Intercontinental	1'366	1'446	-5.5%	1'366	1'446	-5.5%
Total	11'607	12'086	-4.0%	11'607	12'086	-4.0%
Available Seat km (ASK, in mill)						
Europe	690	703	-1.8%	690	703	-1.8%
Intercontinental	1'500	1'724	-13.0%	1'500	1'724	-13.0%
Total	2'190	2'427	-9.8%	2'190	2'427	-9.8%
Revenue Passenger km (RPK, in mill)						
Europe	374	362	3.3%	374	362	3.3%
Intercontinental	1'223	1'341	-8.8%	1'223	1'341	-8.8%
Total	1'597	1'704	-6.2%	1'597	1'704	-6.2%
Seat Load Factor (SLF %) ²⁾						
Europe	54.2%	51.5%	2.7%	54.2%	51.5%	2.7%
Intercontinental	81.6%	77.8%	3.8%	81.6%	77.8%	3.8%
Total	72.9%	70.2%	2.7%	72.9%	70.2%	2.7%
Freight Load Factor (%) ³⁾						
Intercontinental	82.4%	80.0%	2.4%	82.4%	80.0%	2.4%
Freight Tonnes Kilometers (FTK, in 1000)						
Intercontinental	89'475	85'117	5.1%	89'475	85'117	5.1%

¹⁾ Revenue Passengers

²⁾ SLF = RPK / ASK
deviation in % pts

³⁾ Including mail
deviation in % pts

Traffic Statistics February 2005 LX Scheduled Services



Swiss
International
Air Lines

	February			Cumulative		
	2005	2004		2005	2004	
Number of Passengers ¹⁾						
Europe	484'640	504'960	-4.0%	990'635	993'949	-0.3%
Intercontinental	154'540	173'962	-11.2%	337'211	364'672	-7.5%
Total	639'180	678'922	-5.9%	1'327'846	1'358'621	-2.3%
Flights						
Europe	9'511	10'149	-6.3%	19'752	20'789	-5.0%
Intercontinental	1'234	1'352	-8.7%	2'600	2'798	-7.1%
Total	10'745	11'501	-6.6%	22'352	23'587	-5.2%
Available Seat km (ASK, in mill)						
Europe	632	669	-5.6%	1'322	1'372	-3.7%
Intercontinental	1'314	1'603	-18.0%	2'814	3'327	-15.4%
Total	1'946	2'272	-14.3%	4'136	4'699	-12.0%
Revenue Passenger km (RPK, in mill)						
Europe	351	365	-3.9%	725	727	-0.3%
Intercontinental	1'035	1'217	-14.9%	2'258	2'558	-11.7%
Total	1'386	1'582	-12.4%	2'983	3'285	-9.2%
Seat Load Factor (SLF %) ²⁾						
Europe	55.6%	54.6%	1.0%	54.8%	53.0%	1.8%
Intercontinental	78.7%	75.9%	2.8%	80.2%	76.9%	3.3%
Total	71.2%	69.6%	1.6%	72.1%	69.9%	2.2%
Freight Load Factor (%) ³⁾						
Intercontinental	89.9%	90.0%	-0.1%	86.1%	85.0%	1.1%
Freight Tonnes Kilometers (FTK, in 1000)						
Intercontinental	89'993	97'771	-8.0%	179'468	182'888	-1.9%

¹⁾ Revenue Passengers

²⁾ SLF = RPK / ASK
deviation in % pts

³⁾ Including mail
deviation in % pts

Traffic Statistics March 2005 LX Scheduled Services



Swiss
International
Air Lines

	March			Cumulative		
	2005	2004		2005	2004	
Number of Passengers ¹⁾						
Europe	640'333	602'964	6.2%	1'630'968	1'596'913	2.1%
Intercontinental	185'569	198'178	-6.4%	522'780	562'850	-7.1%
Total	825'902	801'142	3.1%	2'153'748	2'159'763	-0.3%
Flights						
Europe	10'572	10'988	-3.8%	30'324	31'777	-4.6%
Intercontinental	1'385	1'419	-2.4%	3'985	4'217	-5.5%
Total	11'957	12'407	-3.6%	34'309	35'994	-4.7%
Available Seat km (ASK, in mill)						
Europe	725	729	-0.5%	2'047	2'101	-2.6%
Intercontinental	1'474	1'686	-12.5%	4'288	5'012	-14.4%
Total	2'199	2'414	-8.9%	6'336	7'113	-10.9%
Revenue Passenger km (RPK, in mill)						
Europe	477	440	8.4%	1'202	1'167	3.0%
Intercontinental	1'242	1'367	-9.1%	3'500	3'925	-10.8%
Total	1'719	1'806	-4.8%	4'702	5'092	-7.7%
Seat Load Factor (SLF %) ²⁾						
Europe	65.7%	60.3%	5.4%	58.7%	55.5%	3.2%
Intercontinental	84.2%	81.1%	3.1%	81.6%	78.3%	3.3%
Total	78.1%	74.8%	3.3%	74.2%	71.6%	2.6%
Freight Load Factor (%) ³⁾						
Intercontinental	89.0%	91.0%	-2.0%	87.1%	87.0%	0.1%
Freight Tonnes Kilometers (FTK, in 1000)						
Intercontinental	98'855	104'478	-5.4%	278'323	287'366	-3.1%

¹⁾ Revenue Passengers

²⁾ SLF = RPK / ASK
deviation in % pts

³⁾ Including mail
deviation in % pts

Traffic Statistics April 2005 LX Scheduled Services



Swiss
International
Air Lines

	April			Cumulative		
	2005	2004		2005	2004	
Number of Passengers ¹⁾						
Europe	654'672	629'871	3.9%	2'285'640	2'226'784	2.6%
Intercontinental	188'133	189'881	-0.9%	710'913	752'731	-5.6%
Total	842'805	819'752	2.8%	2'996'553	2'979'515	0.6%
Flights						
Europe	10'284	10'622	-3.2%	40'608	42'399	-4.2%
Intercontinental	1'385	1'299	6.6%	5'370	5'516	-2.6%
Total	11'669	11'921	-2.1%	45'978	47'915	-4.0%
Available Seat km (ASK, in mill)						
Europe	723	705	2.6%	2'770	2'806	-1.3%
Intercontinental	1'489	1'561	-4.6%	5'778	6'573	-12.1%
Total	2'212	2'266	-2.4%	8'548	9'379	-8.9%
Revenue Passenger km (RPK, in mill)						
Europe	490	471	4.0%	1'692	1'638	3.3%
Intercontinental	1'266	1'278	-1.0%	4'766	5'203	-8.4%
Total	1'756	1'749	0.4%	6'457	6'841	-5.6%
Seat Load Factor (SLF %) ²⁾						
Europe	67.8%	66.8%	1.0%	61.1%	58.4%	2.7%
Intercontinental	85.0%	81.9%	3.1%	82.5%	79.2%	3.3%
Total	79.4%	77.2%	2.2%	75.5%	72.9%	2.6%
Freight Load Factor (%) ³⁾						
Intercontinental	86.9%	83.0%	3.9%	87.0%	86.0%	1.0%
Freight Tonnes Kilometers (FTK, in 1000)						
Intercontinental	97'168	88'759	9.5%	375'491	376'125	-0.2%

¹⁾ Revenue Passengers

²⁾ SLF = RPK / ASK
deviation in % pts

³⁾ Including mail
deviation in % pts

Traffic Statistics May 2005 LX Scheduled Services



Swiss
International
Air Lines

	May			Cumulative		
	2005	2004		2005	2004	
Number of Passengers ¹⁾						
Europe	650'951	606'582	7.3%	2'936'591	2'833'366	3.6%
Intercontinental	187'997	182'270	3.1%	898'910	935'001	-3.9%
Total	838'948	788'852	6.4%	3'835'501	3'768'367	1.8%
Flights						
Europe	10'186	10'883	-6.4%	50'794	53'282	-4.7%
Intercontinental	1'427	1'331	7.2%	6'797	6'847	-0.7%
Total	11'613	12'214	-4.9%	57'591	60'129	-4.2%
Available Seat km (ASK, in mill)						
Europe	734	718	2.2%	3'505	3'524	-0.6%
Intercontinental	1'529	1'607	-4.8%	7'306	8'180	-10.7%
Total	2'263	2'325	-2.7%	10'811	11'704	-7.6%
Revenue Passenger km (RPK, in mill)						
Europe	500	451	10.8%	2'191	2'089	4.9%
Intercontinental	1'257	1'234	1.9%	6'022	6'437	-6.4%
Total	1'756	1'685	4.2%	8'214	8'526	-3.7%
Seat Load Factor (SLF %) ²⁾						
Europe	68.0%	62.8%	5.2%	62.5%	59.3%	3.2%
Intercontinental	82.2%	76.8%	5.4%	82.4%	78.7%	3.7%
Total	77.6%	72.5%	5.1%	76.0%	72.8%	3.2%
Freight Load Factor (%) ³⁾						
Intercontinental	83.5%	84.7%	-1.2%	86.3%	85.7%	0.6%
Freight Tonnes Kilometers (FTK, in 1000)						
Intercontinental	95'635	95'309	0.3%	471'126	471'434	-0.1%

¹⁾ Revenue Passengers

²⁾ SLF = RPK / ASK
deviation in % pts

³⁾ Including mail
deviation in % pts

Traffic Statistics June 2005 LX Scheduled Services



Swiss
International
Air Lines

	June			Cumulative		
	2005	2004		2005	2004	
Number of Passengers ¹⁾						
Europe	661'327	610'949	8.2%	3'597'918	3'444'315	4.5%
Intercontinental	191'291	185'663	3.0%	1'090'201	1'120'664	-2.7%
Total	852'618	796'612	7.0%	4'688'119	4'564'979	2.7%
Flights						
Europe	10'014	10'574	-5.3%	60'808	63'856	-4.8%
Intercontinental	1'376	1'282	7.3%	8'173	8'129	0.5%
Total	11'390	11'856	-3.9%	68'981	71'985	-4.2%
Available Seat km (ASK, in mill)						
Europe	725	707	2.5%	4'229	4'231	0.0%
Intercontinental	1'478	1'547	-4.4%	8'785	9'727	-9.7%
Total	2'203	2'254	-2.3%	13'014	13'958	-6.8%
Revenue Passenger km (RPK, in mill)						
Europe	508	462	9.8%	2'699	2'551	5.8%
Intercontinental	1'289	1'261	2.2%	7'311	7'698	-5.0%
Total	1'796	1'724	4.2%	10'010	10'249	-2.3%
Seat Load Factor (SLF %) ²⁾						
Europe	70.0%	65.4%	4.6%	63.8%	60.3%	3.5%
Intercontinental	87.2%	81.5%	5.7%	83.2%	79.1%	4.1%
Total	81.5%	76.5%	5.0%	76.9%	73.4%	3.5%
Estimate Freight Load Factor (%) ³⁾						
Intercontinental	84.9%	86.9%	-2.0%	86.1%	85.9%	0.2%
Estimate Freight Tonnes Kilometers (FTK, in 1000)						
Intercontinental	96'755	95'382	1.4%	567'881	566'816	0.2%

¹⁾ Revenue Passengers

²⁾ SLF = RPK / ASK
deviation in % pts

³⁾ Including mail
deviation in % pts

Traffic Statistics July 2005 LX Scheduled Services



Swiss
International
Air Lines

	July		Cumulative	
	2005	2004	2005	2004
Number of Passengers ¹⁾				
Europe	616'782		4'061'097	
Intercontinental	199'166		1'319'830	
Total	815'948		5'380'927	
Flights				
Europe	10'889		74'745	
Intercontinental	1'332		9'461	
Total	12'221		84'206	
Available Seat km (ASK, in mill)				
Europe	725		4'956	
Intercontinental	1'603		11'330	
Total	2'328		16'286	
Revenue Passenger km (RPK, in mill)				
Europe	477		3'029	
Intercontinental	1'350		9'048	
Total	1'827		12'076	
Seat Load Factor (SLF %) ²⁾				
Europe	65.9%		61.1%	
Intercontinental	84.2%		79.9%	
Total	78.5%		74.2%	
Freight Load Factor (%) ³⁾				
Intercontinental	86.0%		85.9%	
Freight Tonnes Kilometers (FTK, in 1000)				
Intercontinental	94'999		661'815	

¹⁾ Revenue Passengers

²⁾ SLF = RPK / ASK
deviation in % pts

³⁾ Including mail
deviation in % pts

Traffic Statistics August 2005 LX Scheduled Services



Swiss
International
Air Lines

	August		Cumulative	
	2005	2004	2005	2004
Number of Passengers ¹⁾				
Europe	736'117		5'437'242	
Intercontinental	265'112		1'854'085	
Total	1'001'229		7'291'327	
Flights				
Europe	13'864		121'705	
Intercontinental	1'803		13'999	
Total	15'667		135'704	
Available Seat km (ASK, in mill)				
Europe	847		7'282	
Intercontinental	2'034		15'943	
Total	2'881		23'224	
Revenue Passenger km (RPK, in mill)				
Europe	592		4'223	
Intercontinental	1'725		12'309	
Total	2'317		16'531	
Seat Load Factor (SLF %) ²⁾				
Europe	69.9%		58.0%	
Intercontinental	84.8%		77.2%	
Total	80.4%		71.2%	
Freight Load Factor (%) ³⁾				
Intercontinental	79.7%		83.4%	
Freight Tonnes Kilometers (FTK, in 1000)				
Intercontinental	97'449		866'094	

¹⁾ Revenue Passengers

²⁾ SLF = RPK / ASK
deviation in % pts

³⁾ Including mail
deviation in % pts

Traffic Statistics September 2005 LX Scheduled Services



Swiss
International
Air Lines

	September		Cumulative	
	2005	2004	2005	2004
Number of Passengers ¹⁾				
Europe	618'408		5'291'463	
Intercontinental	191'552		1'718'639	
Total	809'960		7'010'102	
Flights				
Europe	10'670		96'061	
Intercontinental	1'277		12'071	
Total	11'947		108'132	
Available Seat km (ASK, in mill)				
Europe	709		6'392	
Intercontinental	1'533		14'465	
Total	2'242		20'856	
Revenue Passenger km (RPK, in mill)				
Europe	463		3'971	
Intercontinental	1'285		11'703	
Total	1'748		15'674	
Seat Load Factor (SLF %) ²⁾				
Europe	65.3%		62.1%	
Intercontinental	83.8%		80.9%	
Total	78.0%		75.2%	
Freight Load Factor (%) ³⁾				
Intercontinental	86.1%		85.8%	
Freight Tonnes Kilometers (FTK, in 1000)				
Intercontinental	91'731		845'914	

¹⁾ Revenue Passengers

²⁾ SLF = RPK / ASK
deviation in % pts

³⁾ Including mail
deviation in % pts

Traffic Statistics October 2005 LX Scheduled Services



Swiss
International
Air Lines

	October		Cumulative	
	2005	2004	2005	2004
Number of Passengers ¹⁾				
Europe	615'779		5'907'242	
Intercontinental	199'213		1'917'852	
Total	814'992		7'825'094	
Flights				
Europe	10'902		106'963	
Intercontinental	1'324		13'395	
Total	12'226		120'358	
Available Seat km (ASK, in mill)				
Europe	724		7'116	
Intercontinental	1'599		16'064	
Total	2'323		23'179	
Revenue Passenger km (RPK, in mill)				
Europe	460		4'431	
Intercontinental	1'345		13'047	
Total	1'805		17'479	
Seat Load Factor (SLF %) ²⁾				
Europe	63.6%		62.3%	
Intercontinental	84.1%		81.2%	
Total	77.7%		75.4%	
Freight Load Factor (%) ³⁾				
Intercontinental	88.0%		86.0%	
Freight Tonnes Kilometers (FTK, in 1000)				
Intercontinental	100'034		945'948	

¹⁾ Revenue Passengers

²⁾ SLF = RPK / ASK
deviation in % pts

³⁾ Including mail
deviation in % pts

Traffic Statistics November 2005 LX Scheduled Services



Swiss
International
Air Lines

	November		Cumulative	
	2005	2004	2005	2004
Number of Passengers ¹⁾				
Europe	492'037		6'399'279	
Intercontinental	174'263		2'092'115	
Total	666'300		8'491'394	
Flights				
Europe	10'504		117'467	
Intercontinental	1'278		14'673	
Total	11'782		132'140	
Available Seat km (ASK, in mill)				
Europe	689		7'804	
Intercontinental	1'447		17'511	
Total	2'136		25'315	
Revenue Passenger km (RPK, in mill)				
Europe	351		4'782	
Intercontinental	1'174		14'221	
Total	1'525		19'004	
Seat Load Factor (SLF %) ²⁾				
Europe	51.0%		61.3%	
Intercontinental	81.1%		81.2%	
Total	71.4%		75.1%	
Freight Load Factor (%) ³⁾				
Intercontinental	88.5%		86.3%	
Freight Tonnes Kilometers (FTK, in 1000)				
Intercontinental	97'757		1'043'705	

¹⁾ Revenue Passengers

²⁾ SLF = RPK / ASK
deviation in % pts

³⁾ Including mail
deviation in % pts

Traffic Statistics December 2005 LX Scheduled Services



Swiss
International
Air Lines

	December		Cumulative	
	2005	2004	2005	2004
Number of Passengers ¹⁾				
Europe	516'269		6'915'548	
Intercontinental	180'093		2'272'208	
Total	696'362		9'187'756	
Flights				
Europe	10'192		127'659	
Intercontinental	1'318		15'991	
Total	11'510		143'650	
Available Seat km (ASK, in mill)				
Europe	688		8'492	
Intercontinental	1'479		18'990	
Total	2'167		27'483	
Revenue Passenger km (RPK, in mill)				
Europe	381		5'164	
Intercontinental	1'210		15'432	
Total	1'592		20'596	
Seat Load Factor (SLF %) ²⁾				
Europe	55.5%		60.8%	
Intercontinental	81.8%		81.3%	
Total	73.5%		74.9%	
Freight Load Factor (%) ³⁾				
Intercontinental	87.2%		86.3%	
Freight Tonnes Kilometers (FTK, in 1000)				
Intercontinental	97'713		1'141'418	

¹⁾ Revenue Passengers

²⁾ SLF = RPK / ASK
deviation in % pts

³⁾ Including mail
deviation in % pts