

# SWISS traffic figures

January to March 2005



## SWISS reports substantially higher load factors for the first quarter of 2005

SWISS achieved a systemwide seat load factor of 74.2% for the first three months of 2005, a 2.6-percentage-point improvement on the same period last year. Seat load factor on intercontinental services rose 3.3 percentage points to 81.6%; and the 58.7% seat load factor recorded on SWISS's European network was 3.2 percentage points up on the prior-year result. SWISS carried approximately 2.15 million passengers on its scheduled services in the first three months of the year.

Traffic results for the month of March saw a continuation in the recovery of load factors on European routes. The 65.7% seat load factor recorded on SWISS's European network was a substantial 5.4-percentage-point increase on its prior-year equivalent; and the 84.2% seat load factor reported on intercontinental services was a year-on-year improvement of 3.1 percentage points, the thirteenth monthly increase in succession for intercontinental routes.

March seat load factor on *intercontinental services* amounted to 84.2%, compared to 81.1% for the same month last year. Available seat kilometre (ASK) capacity was 12.5% below March 2004, while revenue passenger kilometre (RPK) traffic saw a smaller 9.1% decline.

SWISS achieved excellent loadings on its intercontinental services in March. Services over the North Atlantic posted a seat load factor of 88.3%, an improvement of 3.0 percentage points. Flights to and from the Far East saw their seat load factor rise 4.4 percentage points to 84.4%. The 76.3% seat load factor recorded on Middle East services was a 3.6-percentage-point improvement. And flights to and from Africa posted a seat load factor of 78.5%, an increase of 6.8 percentage points. Services to Latin America were also well utilised, even though the 85.2% seat load factor recorded was a 2.9-percentage-point decline on the prior-year period.

March seat load factor for SWISS's *European services* also showed a significant improvement on its prior-year equivalent, rising 5.4 percentage points to 65.7%. While ASK capacity for the month was 0.5% below March 2004 levels, SWISS achieved a sizeable 8.4% increase in RPK traffic volume.

The year-on-year improvement in March load factor on European services is due in no small part to the earlier start this year of the Easter holidays. SWISS's intensified marketing and sales efforts also had their own positive effect. As a result, SWISS was able to improve its European seat load factor for the third month running.

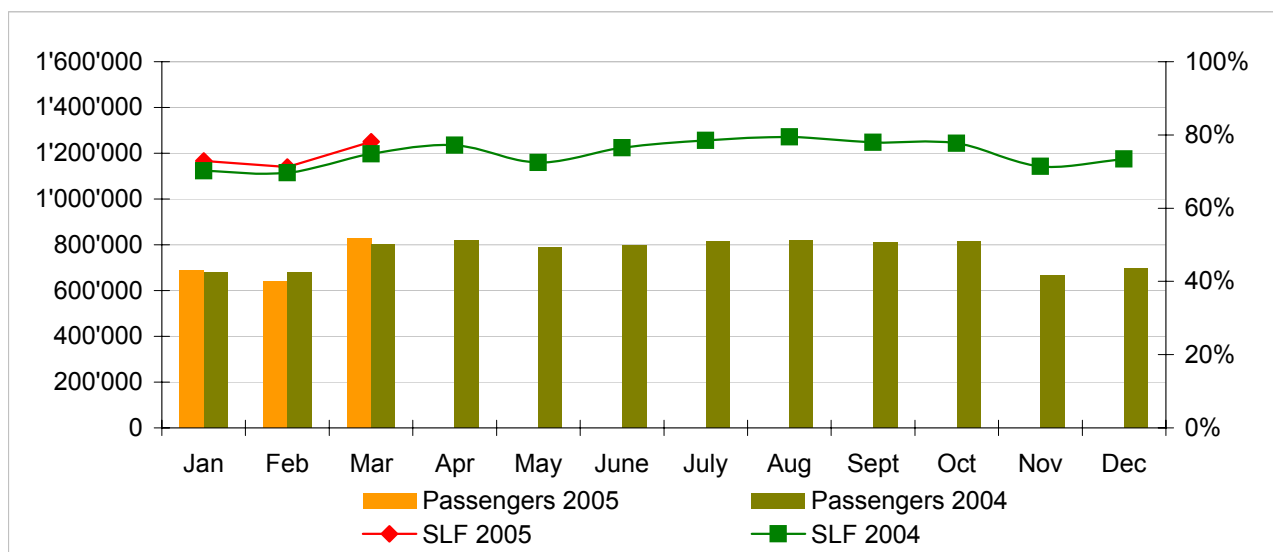
The cargo business of *Swiss WorldCargo* showed encouraging overall trends for the first three months of 2005. Cargo load factor (by volume) stood at 87.5%, an increase of 0.5 percentage points on the first quarter of 2004.

## Traffic Statistics January-December 2005 LX Scheduled Services



	Passengers Europe	Passengers Intercontinental	Passengers Total	SLF Europe	SLF Intercontinental	SLF Total
Jan	505'995	182'671	688'666	54.2%	81.6%	72.9%
Feb	484'640	154'540	639'180	55.6%	78.7%	71.2%
Mar	640'333	185'569	825'902	65.7%	84.2%	78.1%
Apr						
May						
Jun						
Jul						
Aug						
Sep						
Oct						
Nov						
Dec						

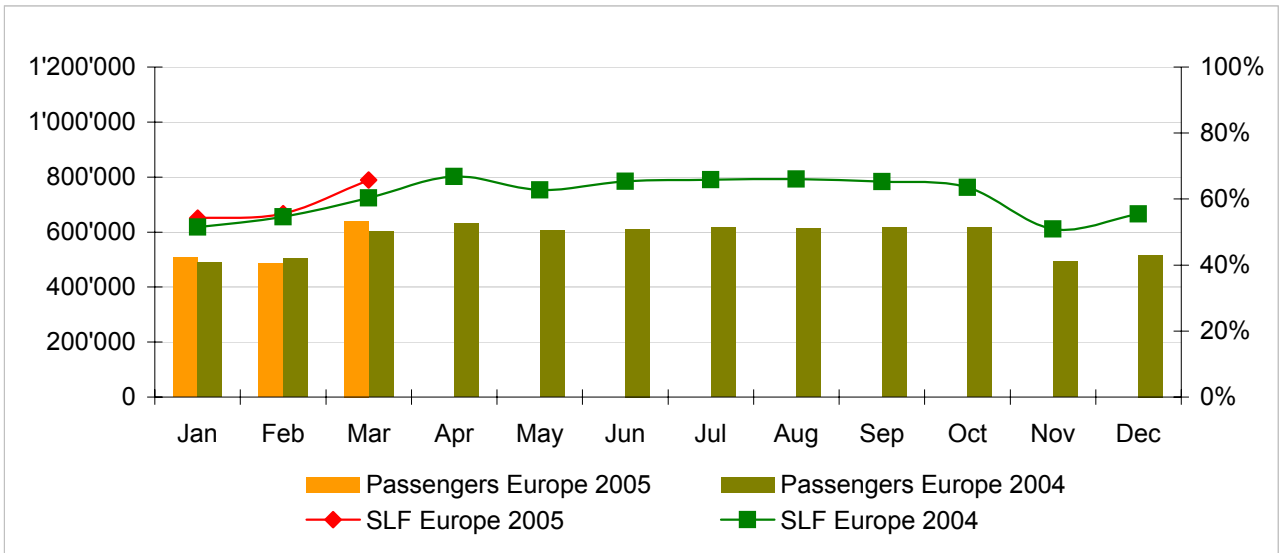
### Comparison Passengers and Seat Load Factor (SLF %) versus prior year



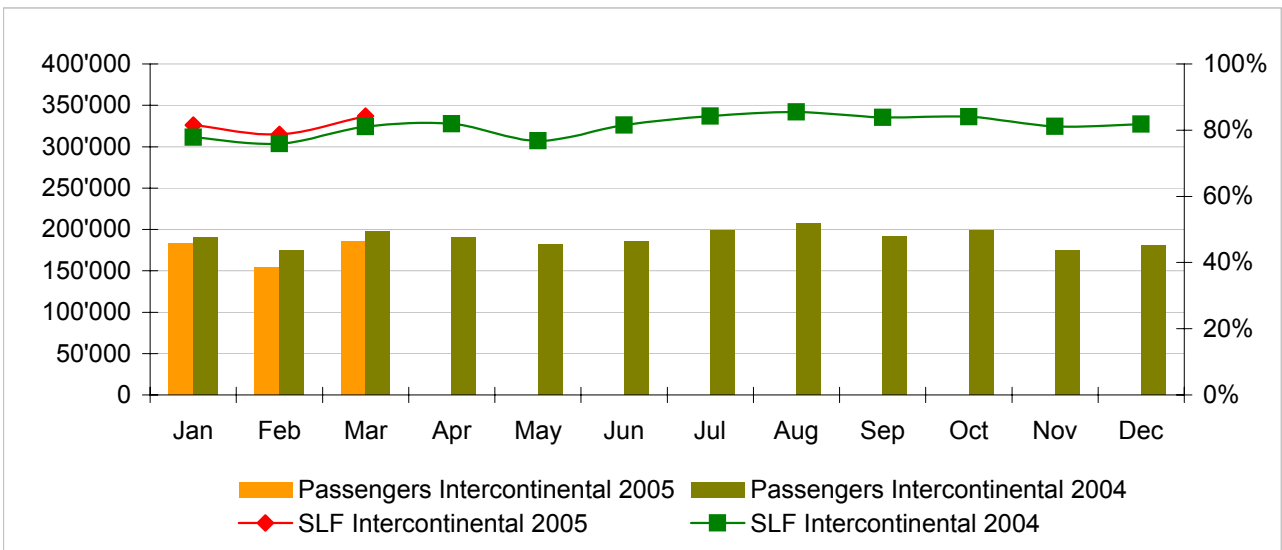
#### Next updates:

- April 05 figures            May 10, 2005
- May 05 figures             June 10, 2005
- June 05 figures            July 12, 2005

**Passengers and Seat Load Factor (SLF %) European Routes**  
Comparison versus prior year



**Passengers and Seat Load Factor (SLF %) Intercontinental Routes**  
Comparison versus prior year



## Traffic Statistics January 2005 LX Scheduled Services



Swiss  
International  
Air Lines

	January			Cumulative		
	2005	2004		2005	2004	
<b>Number of Passengers <sup>1)</sup></b>						
Europe	505'995	488'989	3.5%	505'995	488'989	3.5%
Intercontinental	182'671	190'710	-4.2%	182'671	190'710	-4.2%
Total	688'666	679'699	1.3%	688'666	679'699	1.3%
<b>Flights</b>						
Europe	10'241	10'640	-3.8%	10'241	10'640	-3.8%
Intercontinental	1'366	1'446	-5.5%	1'366	1'446	-5.5%
Total	11'607	12'086	-4.0%	11'607	12'086	-4.0%
<b>Available Seat km (ASK, in mill)</b>						
Europe	690	703	-1.8%	690	703	-1.8%
Intercontinental	1'500	1'724	-13.0%	1'500	1'724	-13.0%
Total	2'190	2'427	-9.8%	2'190	2'427	-9.8%
<b>Revenue Passenger km (RPK, in mill)</b>						
Europe	374	362	3.3%	374	362	3.3%
Intercontinental	1'223	1'341	-8.8%	1'223	1'341	-8.8%
Total	1'597	1'704	-6.2%	1'597	1'704	-6.2%
<b>Seat Load Factor (SLF %) <sup>2)</sup></b>						
Europe	54.2%	51.5%	2.7%	54.2%	51.5%	2.7%
Intercontinental	81.6%	77.8%	3.8%	81.6%	77.8%	3.8%
Total	72.9%	70.2%	2.7%	72.9%	70.2%	2.7%
<b>Freight Load Factor (%) <sup>3)</sup></b>						
Intercontinental	82.4%	80.0%	2.4%	82.4%	80.0%	2.4%
<b>Freight Tonnes Kilometers (FTK, in 1000)</b>						
Intercontinental	89'475	85'117	5.1%	89'475	85'117	5.1%

<sup>1)</sup> Revenue Passengers

<sup>2)</sup> SLF = RPK / ASK  
deviation in % pts

<sup>3)</sup> Including mail  
deviation in % pts

## Traffic Statistics February 2005 LX Scheduled Services



Swiss  
International  
Air Lines

	February			Cumulative		
	2005	2004		2005	2004	
<b>Number of Passengers <sup>1)</sup></b>						
Europe	484'640	504'960	-4.0%	990'635	993'949	-0.3%
Intercontinental	154'540	173'962	-11.2%	337'211	364'672	-7.5%
Total	639'180	678'922	-5.9%	1'327'846	1'358'621	-2.3%
<b>Flights</b>						
Europe	9'511	10'149	-6.3%	19'752	20'789	-5.0%
Intercontinental	1'234	1'352	-8.7%	2'600	2'798	-7.1%
Total	10'745	11'501	-6.6%	22'352	23'587	-5.2%
<b>Available Seat km (ASK, in mill)</b>						
Europe	632	669	-5.6%	1'322	1'372	-3.7%
Intercontinental	1'314	1'603	-18.0%	2'814	3'327	-15.4%
Total	1'946	2'272	-14.3%	4'136	4'699	-12.0%
<b>Revenue Passenger km (RPK, in mill)</b>						
Europe	351	365	-3.9%	725	727	-0.3%
Intercontinental	1'035	1'217	-14.9%	2'258	2'558	-11.7%
Total	1'386	1'582	-12.4%	2'983	3'285	-9.2%
<b>Seat Load Factor (SLF %) <sup>2)</sup></b>						
Europe	55.6%	54.6%	1.0%	54.8%	53.0%	1.8%
Intercontinental	78.7%	75.9%	2.8%	80.2%	76.9%	3.3%
Total	71.2%	69.6%	1.6%	72.1%	69.9%	2.2%
<b>Freight Load Factor (%) <sup>3)</sup></b>						
Intercontinental	90.0%	90.0%	0.0%	86.2%	85.0%	1.2%
<b>Freight Tonnes Kilometers (FTK, in 1000)</b>						
Intercontinental	89'993	97'771	-8.0%	179'468	182'888	-1.9%

<sup>1)</sup> Revenue Passengers

<sup>2)</sup> SLF = RPK / ASK  
deviation in % pts

<sup>3)</sup> Including mail  
deviation in % pts

## Traffic Statistics March 2005 LX Scheduled Services



Swiss  
International  
Air Lines

	March			Cumulative		
	2005	2004		2005	2004	
<b>Number of Passengers <sup>1)</sup></b>						
Europe	640'333	602'964	6.2%	1'630'968	1'596'913	2.1%
Intercontinental	185'569	198'178	-6.4%	522'780	562'850	-7.1%
Total	825'902	801'142	3.1%	2'153'748	2'159'763	-0.3%
<b>Flights</b>						
Europe	10'572	10'988	-3.8%	30'324	31'777	-4.6%
Intercontinental	1'385	1'419	-2.4%	3'985	4'217	-5.5%
Total	11'957	12'407	-3.6%	34'309	35'994	-4.7%
<b>Available Seat km (ASK, in mill)</b>						
Europe	725	729	-0.5%	2'047	2'101	-2.6%
Intercontinental	1'474	1'686	-12.5%	4'288	5'012	-14.4%
Total	2'199	2'414	-8.9%	6'336	7'113	-10.9%
<b>Revenue Passenger km (RPK, in mill)</b>						
Europe	477	440	8.4%	1'202	1'167	3.0%
Intercontinental	1'242	1'367	-9.1%	3'500	3'925	-10.8%
Total	1'719	1'806	-4.8%	4'702	5'092	-7.7%
<b>Seat Load Factor (SLF %) <sup>2)</sup></b>						
Europe	65.7%	60.3%	5.4%	58.7%	55.5%	3.2%
Intercontinental	84.2%	81.1%	3.1%	81.6%	78.3%	3.3%
Total	78.1%	74.8%	3.3%	74.2%	71.6%	2.6%
<b>Estimate Freight Load Factor (%) <sup>3)</sup></b>						
Intercontinental	90.0%	91.0%	-1.0%	87.5%	87.0%	0.5%
<b>Estimate Freight Tonnes Kilometers (FTK, in 1000)</b>						
Intercontinental	105'302	104'478	0.8%	284'770	287'366	-0.9%

<sup>1)</sup> Revenue Passengers

<sup>2)</sup> SLF = RPK / ASK  
deviation in % pts

<sup>3)</sup> Including mail  
deviation in % pts

## Traffic Statistics April 2005 LX Scheduled Services



Swiss  
International  
Air Lines

	April		Cumulative	
	2005	2004	2005	2004
<b>Number of Passengers <sup>1)</sup></b>				
Europe	629'871		2'226'784	
Intercontinental	189'881		752'731	
Total	819'752		2'979'515	
<b>Flights</b>				
Europe	10'622		42'399	
Intercontinental	1'299		5'516	
Total	11'921		47'915	
<b>Available Seat km (ASK, in mill)</b>				
Europe	705		2'806	
Intercontinental	1'561		6'573	
Total	2'266		9'379	
<b>Revenue Passenger km (RPK, in mill)</b>				
Europe	471		1'638	
Intercontinental	1'278		5'203	
Total	1'749		6'841	
<b>Seat Load Factor (SLF %) <sup>2)</sup></b>				
Europe	66.8%		58.4%	
Intercontinental	81.9%		79.2%	
Total	77.2%		72.9%	
<b>Freight Load Factor (%) <sup>3)</sup></b>				
Intercontinental	83.0%		86.0%	
<b>Freight Tonnes Kilometers (FTK, in 1000)</b>				
Intercontinental	88'759		376'125	

<sup>1)</sup> Revenue Passengers

<sup>2)</sup> SLF = RPK / ASK  
deviation in % pts

<sup>3)</sup> Including mail  
deviation in % pts

## Traffic Statistics May 2005 LX Scheduled Services



Swiss  
International  
Air Lines

	May		Cumulative	
	2005	2004	2005	2004
<b>Number of Passengers <sup>1)</sup></b>				
Europe	606'582		2'833'366	
Intercontinental	182'270		935'001	
Total	788'852		3'768'367	
<b>Flights</b>				
Europe	10'883		53'282	
Intercontinental	1'331		6'847	
Total	12'214		60'129	
<b>Available Seat km (ASK, in mill)</b>				
Europe	718		3'524	
Intercontinental	1'607		8'180	
Total	2'325		11'704	
<b>Revenue Passenger km (RPK, in mill)</b>				
Europe	451		2'089	
Intercontinental	1'234		6'437	
Total	1'685		8'526	
<b>Seat Load Factor (SLF %) <sup>2)</sup></b>				
Europe	62.8%		59.3%	
Intercontinental	76.8%		78.7%	
Total	72.5%		72.8%	
<b>Freight Load Factor (%) <sup>3)</sup></b>				
Intercontinental	84.7%		85.7%	
<b>Freight Tonnes Kilometers (FTK, in 1000)</b>				
Intercontinental	95'309		471'434	

<sup>1)</sup> Revenue Passengers

<sup>2)</sup> SLF = RPK / ASK  
deviation in % pts

<sup>3)</sup> Including mail  
deviation in % pts

## Traffic Statistics June 2005 LX Scheduled Services



Swiss  
International  
Air Lines

	June		Cumulative	
	2005	2004	2005	2004
<b>Number of Passengers <sup>1)</sup></b>				
Europe	610'949		3'444'315	
Intercontinental	185'663		1'120'664	
Total	796'612		4'564'979	
<b>Flights</b>				
Europe	10'574		63'856	
Intercontinental	1'282		8'129	
Total	11'856		71'985	
<b>Available Seat km (ASK, in mill)</b>				
Europe	707		4'231	
Intercontinental	1'547		9'727	
Total	2'254		13'958	
<b>Revenue Passenger km (RPK, in mill)</b>				
Europe	462		2'551	
Intercontinental	1'261		7'698	
Total	1'724		10'249	
<b>Seat Load Factor (SLF %) <sup>2)</sup></b>				
Europe	65.4%		60.3%	
Intercontinental	81.5%		79.1%	
Total	76.5%		73.4%	
<b>Freight Load Factor (%) <sup>3)</sup></b>				
Intercontinental	86.9%		85.9%	
<b>Freight Tonnes Kilometers (FTK, in 1000)</b>				
Intercontinental	95'382		566'816	

<sup>1)</sup> Revenue Passengers

<sup>2)</sup> SLF = RPK / ASK  
deviation in % pts

<sup>3)</sup> Including mail  
deviation in % pts

## Traffic Statistics July 2005 LX Scheduled Services



Swiss  
International  
Air Lines

	July		Cumulative	
	2005	2004	2005	2004
<b>Number of Passengers <sup>1)</sup></b>				
Europe	616'782		4'061'097	
Intercontinental	199'166		1'319'830	
Total	815'948		5'380'927	
<b>Flights</b>				
Europe	10'889		74'745	
Intercontinental	1'332		9'461	
Total	12'221		84'206	
<b>Available Seat km (ASK, in mill)</b>				
Europe	725		4'956	
Intercontinental	1'603		11'330	
Total	2'328		16'286	
<b>Revenue Passenger km (RPK, in mill)</b>				
Europe	477		3'029	
Intercontinental	1'350		9'048	
Total	1'827		12'076	
<b>Seat Load Factor (SLF %) <sup>2)</sup></b>				
Europe	65.9%		61.1%	
Intercontinental	84.2%		79.9%	
Total	78.5%		74.2%	
<b>Freight Load Factor (%) <sup>3)</sup></b>				
Intercontinental	86.0%		85.9%	
<b>Freight Tonnes Kilometers (FTK, in 1000)</b>				
Intercontinental	94'999		661'815	

<sup>1)</sup> Revenue Passengers

<sup>2)</sup> SLF = RPK / ASK  
deviation in % pts

<sup>3)</sup> Including mail  
deviation in % pts

## Traffic Statistics August 2005 LX Scheduled Services



Swiss  
International  
Air Lines

	August		Cumulative	
	2005	2004	2005	2004
<b>Number of Passengers <sup>1)</sup></b>				
Europe	736'117		5'437'242	
Intercontinental	265'112		1'854'085	
Total	1'001'229		7'291'327	
<b>Flights</b>				
Europe	13'864		121'705	
Intercontinental	1'803		13'999	
Total	15'667		135'704	
<b>Available Seat km (ASK, in mill)</b>				
Europe	847		7'282	
Intercontinental	2'034		15'943	
Total	2'881		23'224	
<b>Revenue Passenger km (RPK, in mill)</b>				
Europe	592		4'223	
Intercontinental	1'725		12'309	
Total	2'317		16'531	
<b>Seat Load Factor (SLF %) <sup>2)</sup></b>				
Europe	69.9%		58.0%	
Intercontinental	84.8%		77.2%	
Total	80.4%		71.2%	
<b>Freight Load Factor (%) <sup>3)</sup></b>				
Intercontinental	79.7%		83.4%	
<b>Freight Tonnes Kilometers (FTK, in 1000)</b>				
Intercontinental	97'449		866'094	

<sup>1)</sup> Revenue Passengers

<sup>2)</sup> SLF = RPK / ASK  
deviation in % pts

<sup>3)</sup> Including mail  
deviation in % pts

## Traffic Statistics September 2005 LX Scheduled Services



Swiss  
International  
Air Lines

	September		Cumulative	
	2005	2004	2005	2004
<b>Number of Passengers <sup>1)</sup></b>				
Europe	618'408		5'291'463	
Intercontinental	191'552		1'718'639	
Total	809'960		7'010'102	
<b>Flights</b>				
Europe	10'670		96'061	
Intercontinental	1'277		12'071	
Total	11'947		108'132	
<b>Available Seat km (ASK, in mill)</b>				
Europe	709		6'392	
Intercontinental	1'533		14'465	
Total	2'242		20'856	
<b>Revenue Passenger km (RPK, in mill)</b>				
Europe	463		3'971	
Intercontinental	1'285		11'703	
Total	1'748		15'674	
<b>Seat Load Factor (SLF %) <sup>2)</sup></b>				
Europe	65.3%		62.1%	
Intercontinental	83.8%		80.9%	
Total	78.0%		75.2%	
<b>Freight Load Factor (%) <sup>3)</sup></b>				
Intercontinental	86.1%		85.8%	
<b>Freight Tonnes Kilometers (FTK, in 1000)</b>				
Intercontinental	91'731		845'914	

<sup>1)</sup> Revenue Passengers

<sup>2)</sup> SLF = RPK / ASK  
deviation in % pts

<sup>3)</sup> Including mail  
deviation in % pts

## Traffic Statistics October 2005 LX Scheduled Services



Swiss  
International  
Air Lines

	October		Cumulative	
	2005	2004	2005	2004
<b>Number of Passengers <sup>1)</sup></b>				
Europe	615'779		5'907'242	
Intercontinental	199'213		1'917'852	
Total	814'992		7'825'094	
<b>Flights</b>				
Europe	10'902		106'963	
Intercontinental	1'324		13'395	
Total	12'226		120'358	
<b>Available Seat km (ASK, in mill)</b>				
Europe	724		7'116	
Intercontinental	1'599		16'064	
Total	2'323		23'179	
<b>Revenue Passenger km (RPK, in mill)</b>				
Europe	460		4'431	
Intercontinental	1'345		13'047	
Total	1'805		17'479	
<b>Seat Load Factor (SLF %) <sup>2)</sup></b>				
Europe	63.6%		62.3%	
Intercontinental	84.1%		81.2%	
Total	77.7%		75.4%	
<b>Freight Load Factor (%) <sup>3)</sup></b>				
Intercontinental	88.0%		86.0%	
<b>Freight Tonnes Kilometers (FTK, in 1000)</b>				
Intercontinental	100'034		945'948	

<sup>1)</sup> Revenue Passengers

<sup>2)</sup> SLF = RPK / ASK  
deviation in % pts

<sup>3)</sup> Including mail  
deviation in % pts

## Traffic Statistics November 2005 LX Scheduled Services



Swiss  
International  
Air Lines

	November		Cumulative	
	2005	2004	2005	2004
<b>Number of Passengers <sup>1)</sup></b>				
Europe	492'037		6'399'279	
Intercontinental	174'263		2'092'115	
Total	666'300		8'491'394	
<b>Flights</b>				
Europe	10'504		117'467	
Intercontinental	1'278		14'673	
Total	11'782		132'140	
<b>Available Seat km (ASK, in mill)</b>				
Europe	689		7'804	
Intercontinental	1'447		17'511	
Total	2'136		25'315	
<b>Revenue Passenger km (RPK, in mill)</b>				
Europe	351		4'782	
Intercontinental	1'174		14'221	
Total	1'525		19'004	
<b>Seat Load Factor (SLF %) <sup>2)</sup></b>				
Europe	51.0%		61.3%	
Intercontinental	81.1%		81.2%	
Total	71.4%		75.1%	
<b>Freight Load Factor (%) <sup>3)</sup></b>				
Intercontinental	88.5%		86.3%	
<b>Freight Tonnes Kilometers (FTK, in 1000)</b>				
Intercontinental	97'757		1'043'705	

<sup>1)</sup> Revenue Passengers

<sup>2)</sup> SLF = RPK / ASK  
deviation in % pts

<sup>3)</sup> Including mail  
deviation in % pts

## Traffic Statistics December 2005 LX Scheduled Services



Swiss  
International  
Air Lines

	December		Cumulative	
	2005	2004	2005	2004
<b>Number of Passengers <sup>1)</sup></b>				
Europe	516'269		6'915'548	
Intercontinental	180'093		2'272'208	
Total	696'362		9'187'756	
<b>Flights</b>				
Europe	10'192		127'659	
Intercontinental	1'318		15'991	
Total	11'510		143'650	
<b>Available Seat km (ASK, in mill)</b>				
Europe	688		8'492	
Intercontinental	1'479		18'990	
Total	2'167		27'483	
<b>Revenue Passenger km (RPK, in mill)</b>				
Europe	381		5'164	
Intercontinental	1'210		15'432	
Total	1'592		20'596	
<b>Seat Load Factor (SLF %) <sup>2)</sup></b>				
Europe	55.5%		60.8%	
Intercontinental	81.8%		81.3%	
Total	73.5%		74.9%	
<b>Freight Load Factor (%) <sup>3)</sup></b>				
Intercontinental	87.2%		86.3%	
<b>Freight Tonnes Kilometers (FTK, in 1000)</b>				
Intercontinental	97'713		1'141'418	

<sup>1)</sup> Revenue Passengers

<sup>2)</sup> SLF = RPK / ASK  
deviation in % pts

<sup>3)</sup> Including mail  
deviation in % pts