

SWISS traffic figures

May 2005



SWISS posts favourable May load factors

SWISS reports an average systemwide seat load factor of 77.6% for May 2005. The result is an improvement of 5.1 percentage points on the same month last year. Seat load factor on intercontinental services rose 5.4 percentage points year-on-year to 82.2%, continuing a trend which has now persisted for some 15 months. Seat load factor also improved for SWISS's European network, rising 5.2 percentage points to 68.0%. SWISS carried a total of 838 948 passengers on its scheduled services in May 2005, 6.4% up on the prior-year period.

SWISS's May seat load factor on its *intercontinental services* averaged 82.2%, compared to 76.8% for May 2004. Despite a 4.8% year-on-year reduction in available seat kilometre (ASK) capacity for the month, SWISS registered a 1.9% increase in traffic in revenue passenger kilometre (RPK) terms.

Once again, almost all regions contributed to the overall increase in long-haul seat load factor. North Atlantic services recorded a very high seat load factor of 90.7%, 5.1 percentage points up on May 2004; and seat load factor on Far East routes also rose 5.1 percentage points to 80.9%. Seat load factors for Middle East services were up a substantial 13.3 percentage points at 78.1%. The increase is due primarily to the withdrawal by a competitor from the London-Riyadh route: SWISS felt the benefit of the resulting reduction in capacity. Services to Africa posted a seat load factor of 66.9%, up 9.2 percentage points on prior-year levels. Flights to South America saw their seat load factor slip 6.1 percentage points to 75.5%. The decline here is partly attributable to operational factors. For capacity reasons, SWISS had to temporarily modify its schedules on the Zurich-São Paulo route. As a result, around a quarter of May flights to São Paulo left Zurich in the morning instead of their usual late-evening departure. The less attractive departure time led to lower loadings on the services concerned.

Seat load factor for May on *European services* amounted to 68.0%, a 5.2-percentage-point improvement on the prior-year period. ASK capacity was 2.2% up on May 2004. The additional capacity was more than absorbed by demand: RPK traffic for the month showed a far stronger 10.8% improvement on its prior-year equivalent.

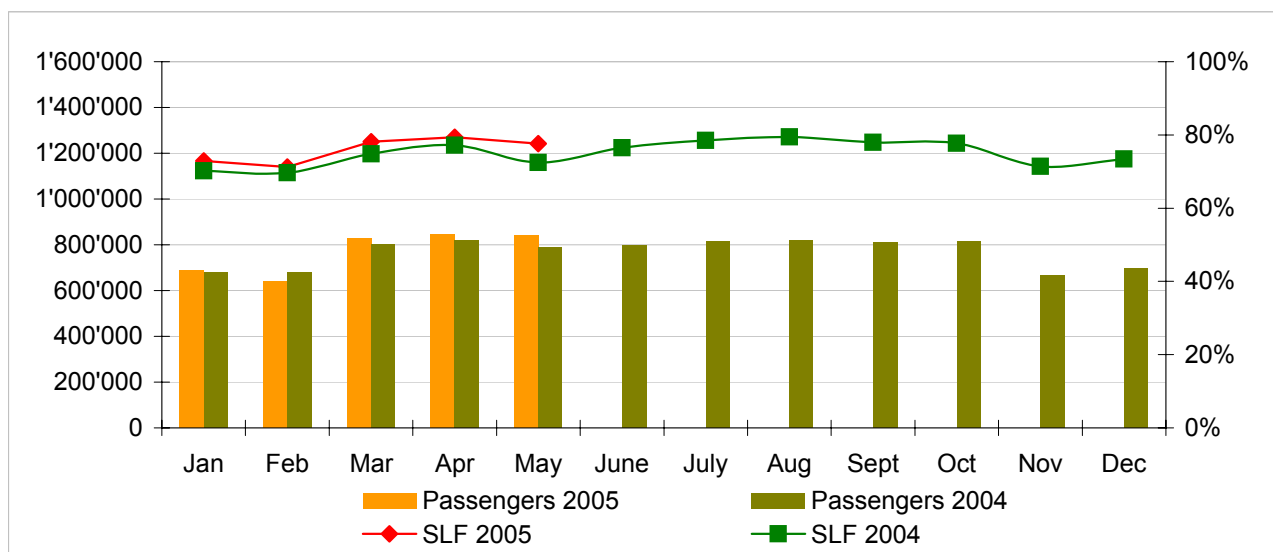
As in April, the increase in overall capacity in Europe was achieved while reducing the total number of flights, which was 6.4% below May 2004 levels. This again reflects SWISS's growing tendency to deploy larger-capacity aircraft on its European services in order to compete more effectively with other airlines, in particular with the low-cost carriers. In increasing its seat capacity, SWISS is also enhancing the strength and appeal of its Zurich Airport hub.

Traffic Statistics January-December 2005 LX Scheduled Services



	Passengers Europe	Passengers Intercontinental	Passengers Total	SLF Europe	SLF Intercontinental	SLF Total
Jan	505'995	182'671	688'666	54.2%	81.6%	72.9%
Feb	484'640	154'540	639'180	55.6%	78.7%	71.2%
Mar	640'333	185'569	825'902	65.7%	84.2%	78.1%
Apr	654'672	188'133	842'805	67.8%	85.0%	79.4%
May	650'951	187'997	838'948	68.0%	82.2%	77.6%
Jun						
Jul						
Aug						
Sep						
Oct						
Nov						
Dec						

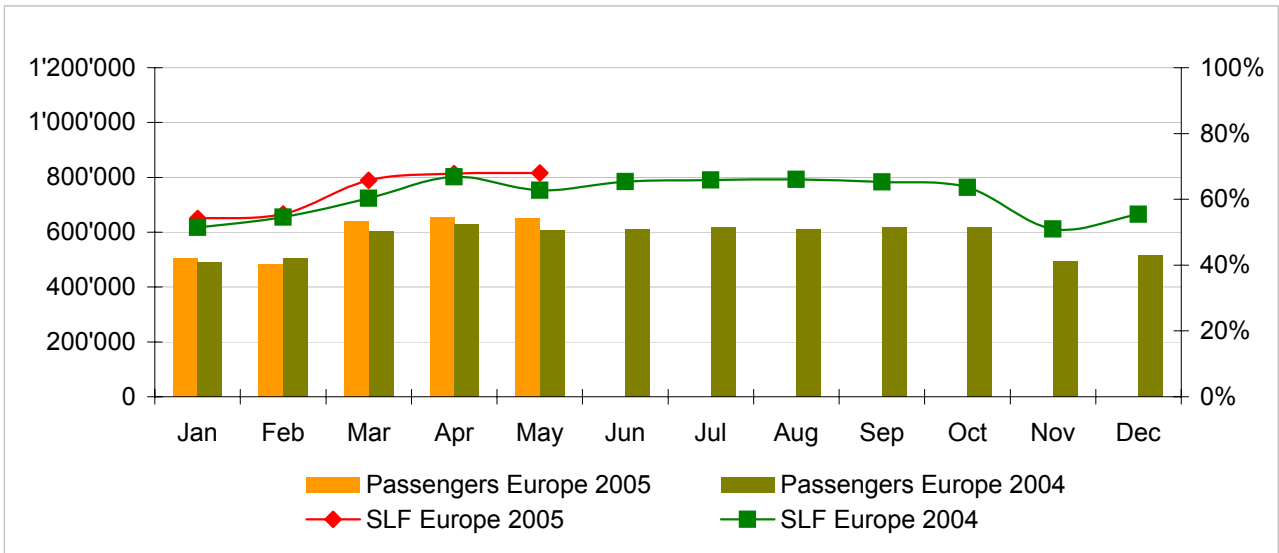
Comparison Passengers and Seat Load Factor (SLF %) versus prior year



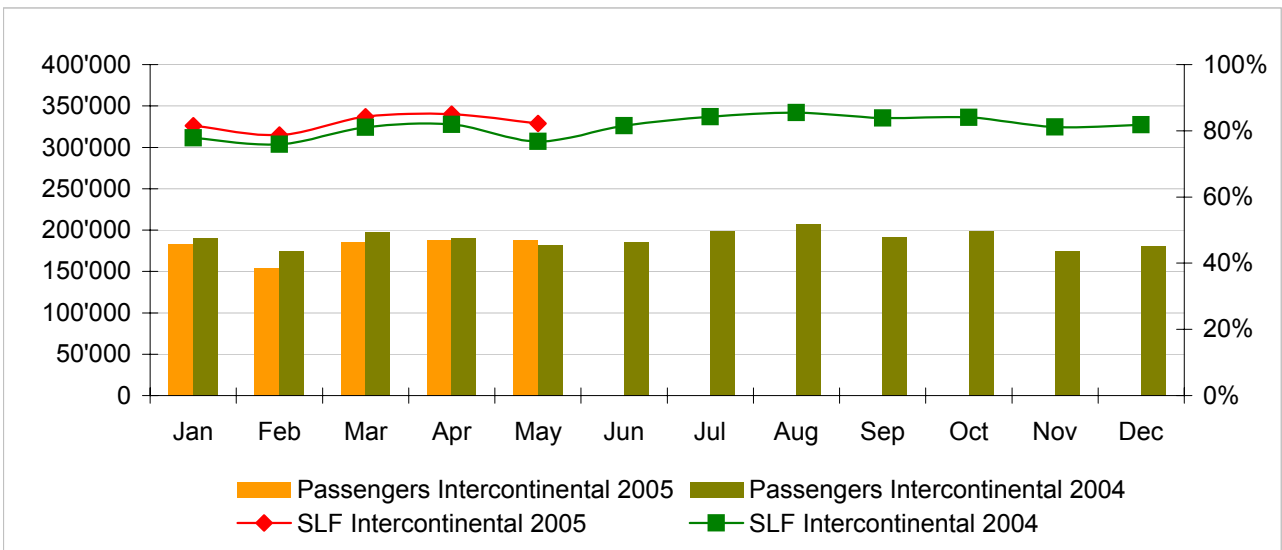
Next updates:

- June 05 figures July 12, 2005
- July 05 figures August 10, 2005
- August 05 figures September 13, 2005

Passengers and Seat Load Factor (SLF %) European Routes
Comparison versus prior year



Passengers and Seat Load Factor (SLF %) Intercontinental Routes
Comparison versus prior year



Traffic Statistics January 2005 LX Scheduled Services



Swiss
International
Air Lines

	January			Cumulative		
	2005	2004		2005	2004	
Number of Passengers ¹⁾						
Europe	505'995	488'989	3.5%	505'995	488'989	3.5%
Intercontinental	182'671	190'710	-4.2%	182'671	190'710	-4.2%
Total	688'666	679'699	1.3%	688'666	679'699	1.3%
Flights						
Europe	10'241	10'640	-3.8%	10'241	10'640	-3.8%
Intercontinental	1'366	1'446	-5.5%	1'366	1'446	-5.5%
Total	11'607	12'086	-4.0%	11'607	12'086	-4.0%
Available Seat km (ASK, in mill)						
Europe	690	703	-1.8%	690	703	-1.8%
Intercontinental	1'500	1'724	-13.0%	1'500	1'724	-13.0%
Total	2'190	2'427	-9.8%	2'190	2'427	-9.8%
Revenue Passenger km (RPK, in mill)						
Europe	374	362	3.3%	374	362	3.3%
Intercontinental	1'223	1'341	-8.8%	1'223	1'341	-8.8%
Total	1'597	1'704	-6.2%	1'597	1'704	-6.2%
Seat Load Factor (SLF %) ²⁾						
Europe	54.2%	51.5%	2.7%	54.2%	51.5%	2.7%
Intercontinental	81.6%	77.8%	3.8%	81.6%	77.8%	3.8%
Total	72.9%	70.2%	2.7%	72.9%	70.2%	2.7%
Freight Load Factor (%) ³⁾						
Intercontinental	82.4%	80.0%	2.4%	82.4%	80.0%	2.4%
Freight Tonnes Kilometers (FTK, in 1000)						
Intercontinental	89'475	85'117	5.1%	89'475	85'117	5.1%

¹⁾ Revenue Passengers

²⁾ SLF = RPK / ASK
deviation in % pts

³⁾ Including mail
deviation in % pts

Traffic Statistics February 2005 LX Scheduled Services



Swiss
International
Air Lines

	February			Cumulative		
	2005	2004		2005	2004	
Number of Passengers ¹⁾						
Europe	484'640	504'960	-4.0%	990'635	993'949	-0.3%
Intercontinental	154'540	173'962	-11.2%	337'211	364'672	-7.5%
Total	639'180	678'922	-5.9%	1'327'846	1'358'621	-2.3%
Flights						
Europe	9'511	10'149	-6.3%	19'752	20'789	-5.0%
Intercontinental	1'234	1'352	-8.7%	2'600	2'798	-7.1%
Total	10'745	11'501	-6.6%	22'352	23'587	-5.2%
Available Seat km (ASK, in mill)						
Europe	632	669	-5.6%	1'322	1'372	-3.7%
Intercontinental	1'314	1'603	-18.0%	2'814	3'327	-15.4%
Total	1'946	2'272	-14.3%	4'136	4'699	-12.0%
Revenue Passenger km (RPK, in mill)						
Europe	351	365	-3.9%	725	727	-0.3%
Intercontinental	1'035	1'217	-14.9%	2'258	2'558	-11.7%
Total	1'386	1'582	-12.4%	2'983	3'285	-9.2%
Seat Load Factor (SLF %) ²⁾						
Europe	55.6%	54.6%	1.0%	54.8%	53.0%	1.8%
Intercontinental	78.7%	75.9%	2.8%	80.2%	76.9%	3.3%
Total	71.2%	69.6%	1.6%	72.1%	69.9%	2.2%
Freight Load Factor (%) ³⁾						
Intercontinental	89.9%	90.0%	-0.1%	86.1%	85.0%	1.1%
Freight Tonnes Kilometers (FTK, in 1000)						
Intercontinental	89'993	97'771	-8.0%	179'468	182'888	-1.9%

¹⁾ Revenue Passengers

²⁾ SLF = RPK / ASK
deviation in % pts

³⁾ Including mail
deviation in % pts

Traffic Statistics March 2005 LX Scheduled Services



Swiss
International
Air Lines

	March			Cumulative		
	2005	2004		2005	2004	
Number of Passengers ¹⁾						
Europe	640'333	602'964	6.2%	1'630'968	1'596'913	2.1%
Intercontinental	185'569	198'178	-6.4%	522'780	562'850	-7.1%
Total	825'902	801'142	3.1%	2'153'748	2'159'763	-0.3%
Flights						
Europe	10'572	10'988	-3.8%	30'324	31'777	-4.6%
Intercontinental	1'385	1'419	-2.4%	3'985	4'217	-5.5%
Total	11'957	12'407	-3.6%	34'309	35'994	-4.7%
Available Seat km (ASK, in mill)						
Europe	725	729	-0.5%	2'047	2'101	-2.6%
Intercontinental	1'474	1'686	-12.5%	4'288	5'012	-14.4%
Total	2'199	2'414	-8.9%	6'336	7'113	-10.9%
Revenue Passenger km (RPK, in mill)						
Europe	477	440	8.4%	1'202	1'167	3.0%
Intercontinental	1'242	1'367	-9.1%	3'500	3'925	-10.8%
Total	1'719	1'806	-4.8%	4'702	5'092	-7.7%
Seat Load Factor (SLF %) ²⁾						
Europe	65.7%	60.3%	5.4%	58.7%	55.5%	3.2%
Intercontinental	84.2%	81.1%	3.1%	81.6%	78.3%	3.3%
Total	78.1%	74.8%	3.3%	74.2%	71.6%	2.6%
Freight Load Factor (%) ³⁾						
Intercontinental	89.0%	91.0%	-2.0%	87.1%	87.0%	0.1%
Freight Tonnes Kilometers (FTK, in 1000)						
Intercontinental	98'855	104'478	-5.4%	278'323	287'366	-3.1%

¹⁾ Revenue Passengers

²⁾ SLF = RPK / ASK
deviation in % pts

³⁾ Including mail
deviation in % pts

Traffic Statistics April 2005 LX Scheduled Services



Swiss
International
Air Lines

	April			Cumulative		
	2005	2004		2005	2004	
Number of Passengers ¹⁾						
Europe	654'672	629'871	3.9%	2'285'640	2'226'784	2.6%
Intercontinental	188'133	189'881	-0.9%	710'913	752'731	-5.6%
Total	842'805	819'752	2.8%	2'996'553	2'979'515	0.6%
Flights						
Europe	10'284	10'622	-3.2%	40'608	42'399	-4.2%
Intercontinental	1'385	1'299	6.6%	5'370	5'516	-2.6%
Total	11'669	11'921	-2.1%	45'978	47'915	-4.0%
Available Seat km (ASK, in mill)						
Europe	723	705	2.6%	2'770	2'806	-1.3%
Intercontinental	1'489	1'561	-4.6%	5'778	6'573	-12.1%
Total	2'212	2'266	-2.4%	8'548	9'379	-8.9%
Revenue Passenger km (RPK, in mill)						
Europe	490	471	4.0%	1'692	1'638	3.3%
Intercontinental	1'266	1'278	-1.0%	4'766	5'203	-8.4%
Total	1'756	1'749	0.4%	6'457	6'841	-5.6%
Seat Load Factor (SLF %) ²⁾						
Europe	67.8%	66.8%	1.0%	61.1%	58.4%	2.7%
Intercontinental	85.0%	81.9%	3.1%	82.5%	79.2%	3.3%
Total	79.4%	77.2%	2.2%	75.5%	72.9%	2.6%
Freight Load Factor (%) ³⁾						
Intercontinental	86.9%	83.0%	3.9%	87.0%	86.0%	1.0%
Freight Tonnes Kilometers (FTK, in 1000)						
Intercontinental	97'173	88'759	9.5%	375'496	376'125	-0.2%

¹⁾ Revenue Passengers

²⁾ SLF = RPK / ASK
deviation in % pts

³⁾ Including mail
deviation in % pts

Traffic Statistics May 2005 LX Scheduled Services



Swiss
International
Air Lines

	May			Cumulative		
	2005	2004		2005	2004	
Number of Passengers ¹⁾						
Europe	650'951	606'582	7.3%	2'936'591	2'833'366	3.6%
Intercontinental	187'997	182'270	3.1%	898'910	935'001	-3.9%
Total	838'948	788'852	6.4%	3'835'501	3'768'367	1.8%
Flights						
Europe	10'186	10'883	-6.4%	50'794	53'282	-4.7%
Intercontinental	1'427	1'331	7.2%	6'797	6'847	-0.7%
Total	11'613	12'214	-4.9%	57'591	60'129	-4.2%
Available Seat km (ASK, in mill)						
Europe	734	718	2.2%	3'505	3'524	-0.6%
Intercontinental	1'529	1'607	-4.8%	7'306	8'180	-10.7%
Total	2'263	2'325	-2.7%	10'811	11'704	-7.6%
Revenue Passenger km (RPK, in mill)						
Europe	500	451	10.8%	2'191	2'089	4.9%
Intercontinental	1'257	1'234	1.9%	6'022	6'437	-6.4%
Total	1'756	1'685	4.2%	8'214	8'526	-3.7%
Seat Load Factor (SLF %) ²⁾						
Europe	68.0%	62.8%	5.2%	62.5%	59.3%	3.2%
Intercontinental	82.2%	76.8%	5.4%	82.4%	78.7%	3.7%
Total	77.6%	72.5%	5.1%	76.0%	72.8%	3.2%
Estimate Freight Load Factor (%) ³⁾						
Intercontinental	82.1%	84.7%	-2.6%	86.0%	85.7%	0.3%
Estimate Freight Tonnes Kilometers (FTK, in 1000)						
Intercontinental	98'323	95'309	3.2%	473'819	471'434	0.5%

¹⁾ Revenue Passengers

²⁾ SLF = RPK / ASK
deviation in % pts

³⁾ Including mail
deviation in % pts

Traffic Statistics June 2005 LX Scheduled Services



Swiss
International
Air Lines

	June		Cumulative	
	2005	2004	2005	2004
Number of Passengers ¹⁾				
Europe	610'949		3'444'315	
Intercontinental	185'663		1'120'664	
Total	796'612		4'564'979	
Flights				
Europe	10'574		63'856	
Intercontinental	1'282		8'129	
Total	11'856		71'985	
Available Seat km (ASK, in mill)				
Europe	707		4'231	
Intercontinental	1'547		9'727	
Total	2'254		13'958	
Revenue Passenger km (RPK, in mill)				
Europe	462		2'551	
Intercontinental	1'261		7'698	
Total	1'724		10'249	
Seat Load Factor (SLF %) ²⁾				
Europe	65.4%		60.3%	
Intercontinental	81.5%		79.1%	
Total	76.5%		73.4%	
Freight Load Factor (%) ³⁾				
Intercontinental	86.9%		85.9%	
Freight Tonnes Kilometers (FTK, in 1000)				
Intercontinental	95'382		566'816	

¹⁾ Revenue Passengers

²⁾ SLF = RPK / ASK
deviation in % pts

³⁾ Including mail
deviation in % pts

Traffic Statistics July 2005 LX Scheduled Services



Swiss
International
Air Lines

	July		Cumulative	
	2005	2004	2005	2004
Number of Passengers ¹⁾				
Europe	616'782		4'061'097	
Intercontinental	199'166		1'319'830	
Total	815'948		5'380'927	
Flights				
Europe	10'889		74'745	
Intercontinental	1'332		9'461	
Total	12'221		84'206	
Available Seat km (ASK, in mill)				
Europe	725		4'956	
Intercontinental	1'603		11'330	
Total	2'328		16'286	
Revenue Passenger km (RPK, in mill)				
Europe	477		3'029	
Intercontinental	1'350		9'048	
Total	1'827		12'076	
Seat Load Factor (SLF %) ²⁾				
Europe	65.9%		61.1%	
Intercontinental	84.2%		79.9%	
Total	78.5%		74.2%	
Freight Load Factor (%) ³⁾				
Intercontinental	86.0%		85.9%	
Freight Tonnes Kilometers (FTK, in 1000)				
Intercontinental	94'999		661'815	

¹⁾ Revenue Passengers

²⁾ SLF = RPK / ASK
deviation in % pts

³⁾ Including mail
deviation in % pts

Traffic Statistics August 2005 LX Scheduled Services



Swiss
International
Air Lines

	August		Cumulative	
	2005	2004	2005	2004
Number of Passengers ¹⁾				
Europe	736'117		5'437'242	
Intercontinental	265'112		1'854'085	
Total	1'001'229		7'291'327	
Flights				
Europe	13'864		121'705	
Intercontinental	1'803		13'999	
Total	15'667		135'704	
Available Seat km (ASK, in mill)				
Europe	847		7'282	
Intercontinental	2'034		15'943	
Total	2'881		23'224	
Revenue Passenger km (RPK, in mill)				
Europe	592		4'223	
Intercontinental	1'725		12'309	
Total	2'317		16'531	
Seat Load Factor (SLF %) ²⁾				
Europe	69.9%		58.0%	
Intercontinental	84.8%		77.2%	
Total	80.4%		71.2%	
Freight Load Factor (%) ³⁾				
Intercontinental	79.7%		83.4%	
Freight Tonnes Kilometers (FTK, in 1000)				
Intercontinental	97'449		866'094	

¹⁾ Revenue Passengers

²⁾ SLF = RPK / ASK
deviation in % pts

³⁾ Including mail
deviation in % pts

Traffic Statistics September 2005 LX Scheduled Services



Swiss
International
Air Lines

	September		Cumulative	
	2005	2004	2005	2004
Number of Passengers ¹⁾				
Europe	618'408		5'291'463	
Intercontinental	191'552		1'718'639	
Total	809'960		7'010'102	
Flights				
Europe	10'670		96'061	
Intercontinental	1'277		12'071	
Total	11'947		108'132	
Available Seat km (ASK, in mill)				
Europe	709		6'392	
Intercontinental	1'533		14'465	
Total	2'242		20'856	
Revenue Passenger km (RPK, in mill)				
Europe	463		3'971	
Intercontinental	1'285		11'703	
Total	1'748		15'674	
Seat Load Factor (SLF %) ²⁾				
Europe	65.3%		62.1%	
Intercontinental	83.8%		80.9%	
Total	78.0%		75.2%	
Freight Load Factor (%) ³⁾				
Intercontinental	86.1%		85.8%	
Freight Tonnes Kilometers (FTK, in 1000)				
Intercontinental	91'731		845'914	

¹⁾ Revenue Passengers

²⁾ SLF = RPK / ASK
deviation in % pts

³⁾ Including mail
deviation in % pts

Traffic Statistics October 2005 LX Scheduled Services



Swiss
International
Air Lines

	October		Cumulative	
	2005	2004	2005	2004
Number of Passengers ¹⁾				
Europe	615'779		5'907'242	
Intercontinental	199'213		1'917'852	
Total	814'992		7'825'094	
Flights				
Europe	10'902		106'963	
Intercontinental	1'324		13'395	
Total	12'226		120'358	
Available Seat km (ASK, in mill)				
Europe	724		7'116	
Intercontinental	1'599		16'064	
Total	2'323		23'179	
Revenue Passenger km (RPK, in mill)				
Europe	460		4'431	
Intercontinental	1'345		13'047	
Total	1'805		17'479	
Seat Load Factor (SLF %) ²⁾				
Europe	63.6%		62.3%	
Intercontinental	84.1%		81.2%	
Total	77.7%		75.4%	
Freight Load Factor (%) ³⁾				
Intercontinental	88.0%		86.0%	
Freight Tonnes Kilometers (FTK, in 1000)				
Intercontinental	100'034		945'948	

¹⁾ Revenue Passengers

²⁾ SLF = RPK / ASK
deviation in % pts

³⁾ Including mail
deviation in % pts

Traffic Statistics November 2005 LX Scheduled Services



Swiss
International
Air Lines

	November		Cumulative	
	2005	2004	2005	2004
Number of Passengers ¹⁾				
Europe	492'037		6'399'279	
Intercontinental	174'263		2'092'115	
Total	666'300		8'491'394	
Flights				
Europe	10'504		117'467	
Intercontinental	1'278		14'673	
Total	11'782		132'140	
Available Seat km (ASK, in mill)				
Europe	689		7'804	
Intercontinental	1'447		17'511	
Total	2'136		25'315	
Revenue Passenger km (RPK, in mill)				
Europe	351		4'782	
Intercontinental	1'174		14'221	
Total	1'525		19'004	
Seat Load Factor (SLF %) ²⁾				
Europe	51.0%		61.3%	
Intercontinental	81.1%		81.2%	
Total	71.4%		75.1%	
Freight Load Factor (%) ³⁾				
Intercontinental	88.5%		86.3%	
Freight Tonnes Kilometers (FTK, in 1000)				
Intercontinental	97'757		1'043'705	

¹⁾ Revenue Passengers

²⁾ SLF = RPK / ASK
deviation in % pts

³⁾ Including mail
deviation in % pts

Traffic Statistics December 2005 LX Scheduled Services



Swiss
International
Air Lines

	December		Cumulative	
	2005	2004	2005	2004
Number of Passengers ¹⁾				
Europe	516'269		6'915'548	
Intercontinental	180'093		2'272'208	
Total	696'362		9'187'756	
Flights				
Europe	10'192		127'659	
Intercontinental	1'318		15'991	
Total	11'510		143'650	
Available Seat km (ASK, in mill)				
Europe	688		8'492	
Intercontinental	1'479		18'990	
Total	2'167		27'483	
Revenue Passenger km (RPK, in mill)				
Europe	381		5'164	
Intercontinental	1'210		15'432	
Total	1'592		20'596	
Seat Load Factor (SLF %) ²⁾				
Europe	55.5%		60.8%	
Intercontinental	81.8%		81.3%	
Total	73.5%		74.9%	
Freight Load Factor (%) ³⁾				
Intercontinental	87.2%		86.3%	
Freight Tonnes Kilometers (FTK, in 1000)				
Intercontinental	97'713		1'141'418	

¹⁾ Revenue Passengers

²⁾ SLF = RPK / ASK
deviation in % pts

³⁾ Including mail
deviation in % pts