

# SWISS traffic figures

October 2005



## SWISS increases its seat load factor in October, too

SWISS reports an average seat load factor on its scheduled services in October of 78.8%, a 1.1-percentage-point improvement on the same month a year ago. Once again, SWISS recorded a very high seat load factor for its intercontinental services of 83.7% (which compares to 84.1% for October 2004). Seat load factor on SWISS's European services amounted to 68.2%, a substantial 4.6-percentage-point improvement on the prior-year period. SWISS carried a total of 829 104 passengers on its October scheduled services.

On *intercontinental services*, SWISS virtually maintained its loadings at the high level (84.1%) achieved last year, posting a seat load factor for the month of 83.7%. As in previous months, available seat kilometre (ASK) capacity was reduced from its prior-year level, by 5.3%. Revenue passenger kilometre (RPK) traffic for the month showed a slightly stronger 5.7% decline.

Seat load factor on North Atlantic services slipped 0.5 percentage points to 85.5%. Far East services saw their seat load factor rise 1.3 percentage points to 87.1%. Services to the Middle East reported another increase in their load factor, which rose 3.8 percentage points to 78.5%. Africa services recorded a seat load factor of 75.0%, down 4.8 percentage points on its prior-year equivalent. While it was a 2.7-percentage-point decline on October 2004, seat load factor on services to South America remained high at 84.7%.

October seat load factor on SWISS's *European services* stood at 68.2%, a 4.6-percentage-point improvement on the prior-year period. While ASK capacity was slightly reduced by 1.4%, European RPK traffic was a 5.8% improvement on October 2004.

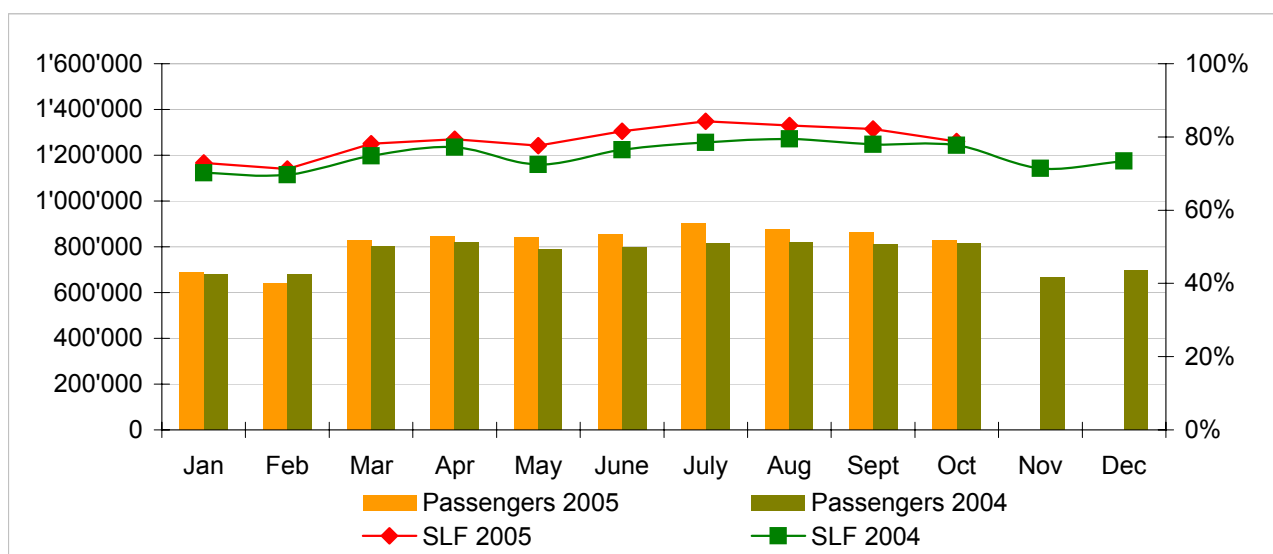
SWISS is consistently implementing its European strategy. While October's total number of flights within Europe was 10.8% down on the same month last year, ASK capacity declined by only 1.4%. By using larger-capacity aircraft on its European routes, SWISS can lower its unit costs per ASK and thus earn itself more scope to compete, especially with the budget carriers. In doing so, SWISS is also strengthening its competitive position at its Zurich Airport hub.

## Traffic Statistics January-December 2005 LX Scheduled Services



	Passengers Europe	Passengers Intercontinental	Passengers Total	SLF Europe	SLF Intercontinental	SLF Total
Jan	505'995	182'671	688'666	54.2%	81.6%	72.9%
Feb	484'640	154'540	639'180	55.6%	78.7%	71.2%
Mar	640'333	185'569	825'902	65.7%	84.2%	78.1%
Apr	654'672	188'133	842'805	67.8%	85.0%	79.4%
May	650'951	187'997	838'948	68.0%	82.2%	77.6%
Jun	661'327	191'291	852'618	70.0%	87.2%	81.5%
Jul	697'794	203'941	901'735	74.3%	89.2%	84.3%
Aug	672'321	204'009	876'330	71.5%	88.8%	83.1%
Sep	670'187	193'612	863'799	71.3%	87.4%	82.2%
Oct	642'720	186'384	829'104	68.2%	83.7%	78.8%
Nov						
Dec						

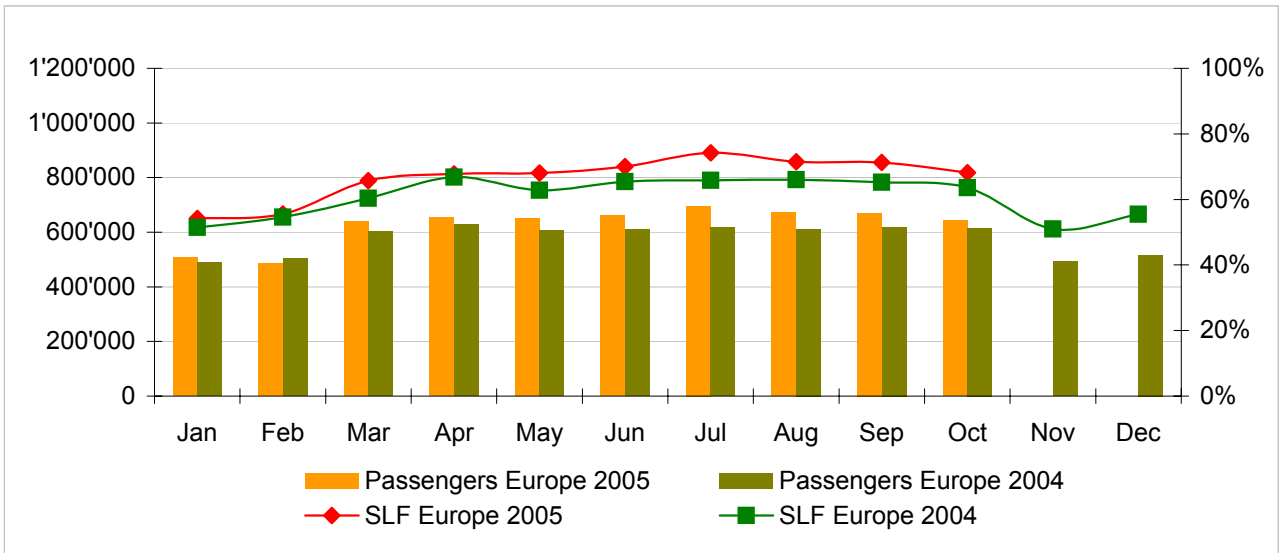
### Comparison Passengers and Seat Load Factor (SLF %) versus prior year



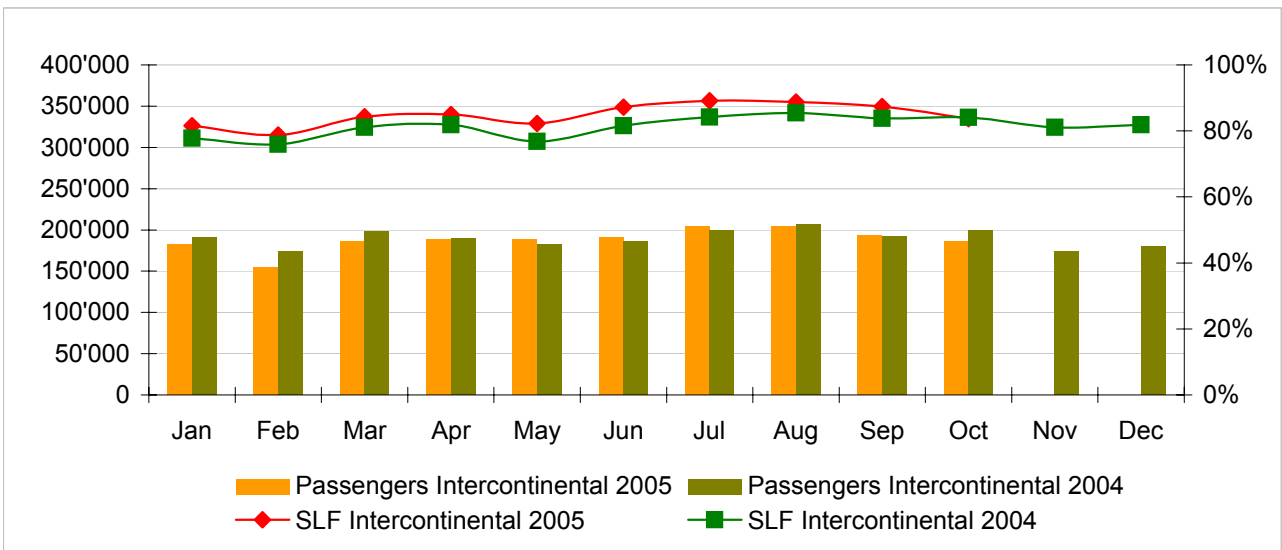
#### Next updates:

- November 05 figures    December 13, 2005

**Passengers and Seat Load Factor (SLF %) European Routes**  
 Comparison versus prior year



**Passengers and Seat Load Factor (SLF %) Intercontinental Routes**  
 Comparison versus prior year



## Traffic Statistics January 2005 LX Scheduled Services



Swiss  
International  
Air Lines

	January			Cumulative		
	2005	2004		2005	2004	
<b>Number of Passengers <sup>1)</sup></b>						
Europe	505'995	488'989	3.5%	505'995	488'989	3.5%
Intercontinental	182'671	190'710	-4.2%	182'671	190'710	-4.2%
Total	688'666	679'699	1.3%	688'666	679'699	1.3%
<b>Flights</b>						
Europe	10'241	10'640	-3.8%	10'241	10'640	-3.8%
Intercontinental	1'366	1'446	-5.5%	1'366	1'446	-5.5%
Total	11'607	12'086	-4.0%	11'607	12'086	-4.0%
<b>Available Seat km (ASK, in mill)</b>						
Europe	690	703	-1.8%	690	703	-1.8%
Intercontinental	1'500	1'724	-13.0%	1'500	1'724	-13.0%
Total	2'190	2'427	-9.8%	2'190	2'427	-9.8%
<b>Revenue Passenger km (RPK, in mill)</b>						
Europe	374	362	3.3%	374	362	3.3%
Intercontinental	1'223	1'341	-8.8%	1'223	1'341	-8.8%
Total	1'597	1'704	-6.2%	1'597	1'704	-6.2%
<b>Seat Load Factor (SLF %) <sup>2)</sup></b>						
Europe	54.2%	51.5%	2.7%	54.2%	51.5%	2.7%
Intercontinental	81.6%	77.8%	3.8%	81.6%	77.8%	3.8%
Total	72.9%	70.2%	2.7%	72.9%	70.2%	2.7%
<b>Freight Load Factor (%) <sup>3)</sup></b>						
Intercontinental	82.4%	80.0%	2.4%	82.4%	80.0%	2.4%
<b>Freight Tonnes Kilometers (FTK, in 1000)</b>						
Intercontinental	89'097	85'117	4.7%	89'097	85'117	4.7%

<sup>1)</sup> Revenue Passengers

<sup>2)</sup> SLF = RPK / ASK  
deviation in % pts

<sup>3)</sup> Including mail  
deviation in % pts

## Traffic Statistics February 2005 LX Scheduled Services



Swiss  
International  
Air Lines

	February			Cumulative		
	2005	2004		2005	2004	
<b>Number of Passengers <sup>1)</sup></b>						
Europe	484'640	504'960	-4.0%	990'635	993'949	-0.3%
Intercontinental	154'540	173'962	-11.2%	337'211	364'672	-7.5%
Total	639'180	678'922	-5.9%	1'327'846	1'358'621	-2.3%
<b>Flights</b>						
Europe	9'511	10'149	-6.3%	19'752	20'789	-5.0%
Intercontinental	1'234	1'352	-8.7%	2'600	2'798	-7.1%
Total	10'745	11'501	-6.6%	22'352	23'587	-5.2%
<b>Available Seat km (ASK, in mill)</b>						
Europe	632	669	-5.6%	1'322	1'372	-3.7%
Intercontinental	1'314	1'603	-18.0%	2'814	3'327	-15.4%
Total	1'946	2'272	-14.3%	4'136	4'699	-12.0%
<b>Revenue Passenger km (RPK, in mill)</b>						
Europe	351	365	-3.9%	725	727	-0.3%
Intercontinental	1'035	1'217	-14.9%	2'258	2'558	-11.7%
Total	1'386	1'582	-12.4%	2'983	3'285	-9.2%
<b>Seat Load Factor (SLF %) <sup>2)</sup></b>						
Europe	55.6%	54.6%	1.0%	54.8%	53.0%	1.8%
Intercontinental	78.7%	75.9%	2.8%	80.2%	76.9%	3.3%
Total	71.2%	69.6%	1.6%	72.1%	69.9%	2.2%
<b>Freight Load Factor (%) <sup>3)</sup></b>						
Intercontinental	89.9%	90.0%	-0.1%	86.1%	85.0%	1.1%
<b>Freight Tonnes Kilometers (FTK, in 1000)</b>						
Intercontinental	89'653	97'771	-8.3%	178'750	182'888	-2.3%

<sup>1)</sup> Revenue Passengers

<sup>2)</sup> SLF = RPK / ASK  
deviation in % pts

<sup>3)</sup> Including mail  
deviation in % pts

## Traffic Statistics March 2005 LX Scheduled Services



Swiss  
International  
Air Lines

	March			Cumulative		
	2005	2004		2005	2004	
<b>Number of Passengers <sup>1)</sup></b>						
Europe	640'333	602'964	6.2%	1'630'968	1'596'913	2.1%
Intercontinental	185'569	198'178	-6.4%	522'780	562'850	-7.1%
Total	825'902	801'142	3.1%	2'153'748	2'159'763	-0.3%
<b>Flights</b>						
Europe	10'572	10'988	-3.8%	30'324	31'777	-4.6%
Intercontinental	1'385	1'419	-2.4%	3'985	4'217	-5.5%
Total	11'957	12'407	-3.6%	34'309	35'994	-4.7%
<b>Available Seat km (ASK, in mill)</b>						
Europe	725	729	-0.5%	2'047	2'101	-2.6%
Intercontinental	1'474	1'686	-12.5%	4'288	5'012	-14.4%
Total	2'199	2'414	-8.9%	6'336	7'113	-10.9%
<b>Revenue Passenger km (RPK, in mill)</b>						
Europe	477	440	8.4%	1'202	1'167	3.0%
Intercontinental	1'242	1'367	-9.1%	3'500	3'925	-10.8%
Total	1'719	1'806	-4.8%	4'702	5'092	-7.7%
<b>Seat Load Factor (SLF %) <sup>2)</sup></b>						
Europe	65.7%	60.3%	5.4%	58.7%	55.5%	3.2%
Intercontinental	84.2%	81.1%	3.1%	81.6%	78.3%	3.3%
Total	78.1%	74.8%	3.3%	74.2%	71.6%	2.6%
<b>Freight Load Factor (%) <sup>3)</sup></b>						
Intercontinental	89.0%	91.0%	-2.0%	87.1%	87.0%	0.1%
<b>Freight Tonnes Kilometers (FTK, in 1000)</b>						
Intercontinental	98'689	104'478	-5.5%	277'439	287'366	-3.5%

<sup>1)</sup> Revenue Passengers

<sup>2)</sup> SLF = RPK / ASK  
deviation in % pts

<sup>3)</sup> Including mail  
deviation in % pts

## Traffic Statistics April 2005 LX Scheduled Services



Swiss  
International  
Air Lines

	April			Cumulative		
	2005	2004		2005	2004	
<b>Number of Passengers <sup>1)</sup></b>						
Europe	654'672	629'871	3.9%	2'285'640	2'226'784	2.6%
Intercontinental	188'133	189'881	-0.9%	710'913	752'731	-5.6%
Total	842'805	819'752	2.8%	2'996'553	2'979'515	0.6%
<b>Flights</b>						
Europe	10'284	10'622	-3.2%	40'608	42'399	-4.2%
Intercontinental	1'385	1'299	6.6%	5'370	5'516	-2.6%
Total	11'669	11'921	-2.1%	45'978	47'915	-4.0%
<b>Available Seat km (ASK, in mill)</b>						
Europe	723	705	2.6%	2'770	2'806	-1.3%
Intercontinental	1'489	1'561	-4.6%	5'778	6'573	-12.1%
Total	2'212	2'266	-2.4%	8'548	9'379	-8.9%
<b>Revenue Passenger km (RPK, in mill)</b>						
Europe	490	471	4.0%	1'692	1'638	3.3%
Intercontinental	1'266	1'278	-1.0%	4'766	5'203	-8.4%
Total	1'756	1'749	0.4%	6'457	6'841	-5.6%
<b>Seat Load Factor (SLF %) <sup>2)</sup></b>						
Europe	67.8%	66.8%	1.0%	61.1%	58.4%	2.7%
Intercontinental	85.0%	81.9%	3.1%	82.5%	79.2%	3.3%
Total	79.4%	77.2%	2.2%	75.5%	72.9%	2.6%
<b>Freight Load Factor (%) <sup>3)</sup></b>						
Intercontinental	86.9%	83.0%	3.9%	87.0%	86.0%	1.0%
<b>Freight Tonnes Kilometers (FTK, in 1000)</b>						
Intercontinental	97'169	88'759	9.5%	374'608	376'125	-0.4%

<sup>1)</sup> Revenue Passengers

<sup>2)</sup> SLF = RPK / ASK  
deviation in % pts

<sup>3)</sup> Including mail  
deviation in % pts

## Traffic Statistics May 2005 LX Scheduled Services



Swiss  
International  
Air Lines

	May			Cumulative		
	2005	2004		2005	2004	
<b>Number of Passengers <sup>1)</sup></b>						
Europe	650'951	606'582	7.3%	2'936'591	2'833'366	3.6%
Intercontinental	187'997	182'270	3.1%	898'910	935'001	-3.9%
Total	838'948	788'852	6.4%	3'835'501	3'768'367	1.8%
<b>Flights</b>						
Europe	10'186	10'883	-6.4%	50'794	53'282	-4.7%
Intercontinental	1'427	1'331	7.2%	6'797	6'847	-0.7%
Total	11'613	12'214	-4.9%	57'591	60'129	-4.2%
<b>Available Seat km (ASK, in mill)</b>						
Europe	734	718	2.2%	3'505	3'524	-0.6%
Intercontinental	1'529	1'607	-4.8%	7'306	8'180	-10.7%
Total	2'263	2'325	-2.7%	10'811	11'704	-7.6%
<b>Revenue Passenger km (RPK, in mill)</b>						
Europe	500	451	10.8%	2'191	2'089	4.9%
Intercontinental	1'257	1'234	1.9%	6'022	6'437	-6.4%
Total	1'756	1'685	4.2%	8'214	8'526	-3.7%
<b>Seat Load Factor (SLF %) <sup>2)</sup></b>						
Europe	68.0%	62.8%	5.2%	62.5%	59.3%	3.2%
Intercontinental	82.2%	76.8%	5.4%	82.4%	78.7%	3.7%
Total	77.6%	72.5%	5.1%	76.0%	72.8%	3.2%
<b>Freight Load Factor (%) <sup>3)</sup></b>						
Intercontinental	83.5%	84.7%	-1.2%	86.2%	85.7%	0.5%
<b>Freight Tonnes Kilometers (FTK, in 1000)</b>						
Intercontinental	95'600	95'309	0.3%	470'208	471'434	-0.3%

<sup>1)</sup> Revenue Passengers

<sup>2)</sup> SLF = RPK / ASK  
deviation in % pts

<sup>3)</sup> Including mail  
deviation in % pts

## Traffic Statistics June 2005 LX Scheduled Services



Swiss  
International  
Air Lines

	June			Cumulative		
	2005	2004		2005	2004	
<b>Number of Passengers <sup>1)</sup></b>						
Europe	661'327	610'949	8.2%	3'597'918	3'444'315	4.5%
Intercontinental	191'291	185'663	3.0%	1'090'201	1'120'664	-2.7%
Total	852'618	796'612	7.0%	4'688'119	4'564'979	2.7%
<b>Flights</b>						
Europe	10'014	10'574	-5.3%	60'808	63'856	-4.8%
Intercontinental	1'376	1'282	7.3%	8'173	8'129	0.5%
Total	11'390	11'856	-3.9%	68'981	71'985	-4.2%
<b>Available Seat km (ASK, in mill)</b>						
Europe	725	707	2.5%	4'229	4'231	0.0%
Intercontinental	1'478	1'547	-4.4%	8'785	9'727	-9.7%
Total	2'203	2'254	-2.3%	13'014	13'958	-6.8%
<b>Revenue Passenger km (RPK, in mill)</b>						
Europe	508	462	9.8%	2'699	2'551	5.8%
Intercontinental	1'289	1'261	2.2%	7'311	7'698	-5.0%
Total	1'796	1'724	4.2%	10'010	10'249	-2.3%
<b>Seat Load Factor (SLF %) <sup>2)</sup></b>						
Europe	70.0%	65.4%	4.6%	63.8%	60.3%	3.5%
Intercontinental	87.2%	81.5%	5.7%	83.2%	79.1%	4.1%
Total	81.5%	76.5%	5.0%	76.9%	73.4%	3.5%
<b>Freight Load Factor (%) <sup>3)</sup></b>						
Intercontinental	84.9%	86.9%	-2.0%	86.0%	85.9%	0.1%
<b>Freight Tonnes Kilometers (FTK, in 1000)</b>						
Intercontinental	96'604	95'382	1.3%	566'812	566'816	0.0%

<sup>1)</sup> Revenue Passengers

<sup>2)</sup> SLF = RPK / ASK  
deviation in % pts

<sup>3)</sup> Including mail  
deviation in % pts

## Traffic Statistics July 2005 LX Scheduled Services



Swiss  
International  
Air Lines

	July			Cumulative		
	2005	2004		2005	2004	
<b>Number of Passengers <sup>1)</sup></b>						
Europe	697'794	616'782	13.1%	4'295'712	4'061'097	5.8%
Intercontinental	203'941	199'166	2.4%	1'294'142	1'319'830	-1.9%
Total	901'735	815'948	10.5%	5'589'854	5'380'927	3.9%
<b>Flights</b>						
Europe	9'886	10'889	-9.2%	70'694	74'745	-5.4%
Intercontinental	1'424	1'332	6.9%	9'597	9'461	1.4%
Total	11'310	12'221	-7.5%	80'291	84'206	-4.6%
<b>Available Seat km (ASK, in mill)</b>						
Europe	748	725	3.2%	4'978	4'956	0.4%
Intercontinental	1'531	1'603	-4.5%	10'316	11'330	-9.0%
Total	2'279	2'328	-2.1%	15'293	16'286	-6.1%
<b>Revenue Passenger km (RPK, in mill)</b>						
Europe	556	477	16.4%	3'255	3'029	7.5%
Intercontinental	1'365	1'350	1.1%	8'676	9'048	-4.1%
Total	1'921	1'827	5.1%	11'931	12'076	-1.2%
<b>Seat Load Factor (SLF %) <sup>2)</sup></b>						
Europe	74.3%	65.9%	8.4%	65.4%	61.1%	4.3%
Intercontinental	89.2%	84.2%	5.0%	84.1%	79.9%	4.2%
Total	84.3%	78.5%	5.8%	78.0%	74.2%	3.8%
<b>Freight Load Factor (%) <sup>3)</sup></b>						
Intercontinental	85.4%	86.0%	-0.6%	85.9%	85.9%	0.0%
<b>Freight Tonnes Kilometers (FTK, in 1000)</b>						
Intercontinental	97'064	94'999	2.2%	663'876	661'815	0.3%

<sup>1)</sup> Revenue Passengers

<sup>2)</sup> SLF = RPK / ASK  
deviation in % pts

<sup>3)</sup> Including mail  
deviation in % pts

## Traffic Statistics August 2005 LX Scheduled Services



Swiss  
International  
Air Lines

	August			Cumulative		
	2005	2004		2005	2004	
<b>Number of Passengers <sup>1)</sup></b>						
Europe	672'321	611'958	9.9%	4'968'033	4'673'055	6.3%
Intercontinental	204'009	207'257	-1.6%	1'498'151	1'527'087	-1.9%
Total	876'330	819'215	7.0%	6'466'184	6'200'142	4.3%
<b>Flights</b>						
Europe	9'884	10'646	-7.2%	80'578	85'391	-5.6%
Intercontinental	1'420	1'333	6.5%	11'017	10'794	2.1%
Total	11'304	11'979	-5.6%	91'595	96'185	-4.8%
<b>Available Seat km (ASK, in mill)</b>						
Europe	755	727	3.9%	5'732	5'682	0.9%
Intercontinental	1'531	1'602	-4.4%	11'847	12'932	-8.4%
Total	2'286	2'329	-1.8%	17'579	18'615	-5.6%
<b>Revenue Passenger km (RPK, in mill)</b>						
Europe	540	480	12.5%	3'794	3'508	8.2%
Intercontinental	1'360	1'370	-0.7%	10'036	10'418	-3.7%
Total	1'899	1'850	2.7%	13'830	13'926	-0.7%
<b>Seat Load Factor (SLF %) <sup>2)</sup></b>						
Europe	71.5%	66.0%	5.5%	66.2%	61.7%	4.5%
Intercontinental	88.8%	85.5%	3.3%	84.7%	80.6%	4.1%
Total	83.1%	79.4%	3.7%	78.7%	74.8%	3.9%
<b>Freight Load Factor (%) <sup>3)</sup></b>						
Intercontinental	84.1%	84.6%	-0.1%	85.7%	85.8%	-0.1%
<b>Freight Tonnes Kilometers (FTK, in 1000)</b>						
Intercontinental	92'137	92'368	-0.3%	756'013	754'183	0.2%

<sup>1)</sup> Revenue Passengers

<sup>2)</sup> SLF = RPK / ASK  
deviation in % pts

<sup>3)</sup> Including mail  
deviation in % pts

## Traffic Statistics September 2005 LX Scheduled Services



Swiss  
International  
Air Lines

	September			Cumulative		
	2005	2004		2005	2004	
<b>Number of Passengers <sup>1)</sup></b>						
Europe	670'187	618'408	8.4%	5'638'220	5'291'463	6.6%
Intercontinental	193'612	191'552	1.1%	1'691'763	1'718'639	-1.6%
Total	863'799	809'960	6.6%	7'329'983	7'010'102	4.6%
<b>Flights</b>						
Europe	9'689	10'670	-9.2%	90'267	96'061	-6.0%
Intercontinental	1'386	1'277	8.5%	12'403	12'071	2.8%
Total	11'075	11'947	-7.3%	102'670	108'132	-5.1%
<b>Available Seat km (ASK, in mill)</b>						
Europe	717	709	1.1%	6'449	6'392	0.9%
Intercontinental	1'485	1'533	-3.1%	13'332	14'465	-7.8%
Total	2'202	2'242	-1.8%	19'781	20'856	-5.2%
<b>Revenue Passenger km (RPK, in mill)</b>						
Europe	511	463	10.5%	4'306	3'971	8.4%
Intercontinental	1'298	1'285	1.0%	11'334	11'703	-3.2%
Total	1'809	1'748	3.5%	15'640	15'674	-0.2%
<b>Seat Load Factor (SLF %) <sup>2)</sup></b>						
Europe	71.3%	65.3%	6.0%	66.8%	62.1%	4.7%
Intercontinental	87.4%	83.8%	3.6%	85.0%	80.9%	4.1%
Total	82.2%	78.0%	4.2%	79.1%	75.2%	3.9%
<b>Freight Load Factor (%) <sup>3)</sup></b>						
Intercontinental	87.7%	86.1%	1.6%	85.9%	85.8%	0.1%
<b>Freight Tonnes Kilometers (FTK, in 1000)</b>						
Intercontinental	97'510	91'731	6.3%	853'523	845'914	0.9%

<sup>1)</sup> Revenue Passengers

<sup>2)</sup> SLF = RPK / ASK  
deviation in % pts

<sup>3)</sup> Including mail  
deviation in % pts

## Traffic Statistics October 2005 LX Scheduled Services



Swiss  
International  
Air Lines

	October			Cumulative		
	2005	2004		2005	2004	
<b>Number of Passengers <sup>1)</sup></b>						
Europe	642'720	615'779	4.4%	6'280'940	5'907'242	6.3%
Intercontinental	186'384	199'213	-6.4%	1'878'147	1'917'852	-2.1%
Total	829'104	814'992	1.7%	8'159'087	7'825'094	4.3%
<b>Flights</b>						
Europe	9'720	10'902	-10.8%	99'987	106'963	-6.5%
Intercontinental	1'403	1'324	6.0%	13'806	13'395	3.1%
Total	11'123	12'226	-9.0%	113'793	120'358	-5.5%
<b>Available Seat km (ASK, in mill)</b>						
Europe	714	724	-1.4%	7'163	7'116	0.7%
Intercontinental	1'514	1'599	-5.3%	14'846	16'064	-7.6%
Total	2'228	2'323	-4.1%	22'010	23'179	-5.0%
<b>Revenue Passenger km (RPK, in mill)</b>						
Europe	487	460	5.8%	4'793	4'431	8.1%
Intercontinental	1'268	1'345	-5.7%	12'602	13'047	-3.4%
Total	1'755	1'805	-2.8%	17'394	17'479	-0.5%
<b>Seat Load Factor (SLF %) <sup>2)</sup></b>						
Europe	68.2%	63.6%	4.6%	66.9%	62.3%	4.6%
Intercontinental	83.7%	84.1%	-0.4%	84.9%	81.2%	3.7%
Total	78.8%	77.7%	1.1%	79.0%	75.4%	3.6%
<b>Estimate Freight Load Factor (%) <sup>3)</sup></b>						
Intercontinental	89.0%	88.0%	1.0%	86.1%	86.0%	0.1%
<b>Estimate Freight Tonnes Kilometers (FTK, in 1000)</b>						
Intercontinental	99'045	100'034	-1.0%	952'568	945'948	0.7%

<sup>1)</sup> Revenue Passengers

<sup>2)</sup> SLF = RPK / ASK  
deviation in % pts

<sup>3)</sup> Including mail  
deviation in % pts

## Traffic Statistics November 2005 LX Scheduled Services



Swiss  
International  
Air Lines

	November		Cumulative	
	2005	2004	2005	2004
<b>Number of Passengers <sup>1)</sup></b>				
Europe	492'037		6'399'279	
Intercontinental	174'263		2'092'115	
<b>Total</b>	<b>666'300</b>		<b>8'491'394</b>	
<b>Flights</b>				
Europe	10'504		117'467	
Intercontinental	1'278		14'673	
<b>Total</b>	<b>11'782</b>		<b>132'140</b>	
<b>Available Seat km (ASK, in mill)</b>				
Europe	689		7'804	
Intercontinental	1'447		17'511	
<b>Total</b>	<b>2'136</b>		<b>25'315</b>	
<b>Revenue Passenger km (RPK, in mill)</b>				
Europe	351		4'782	
Intercontinental	1'174		14'221	
<b>Total</b>	<b>1'525</b>		<b>19'004</b>	
<b>Seat Load Factor (SLF %) <sup>2)</sup></b>				
Europe	51.0%		61.3%	
Intercontinental	81.1%		81.2%	
<b>Total</b>	<b>71.4%</b>		<b>75.1%</b>	
<b>Freight Load Factor (%) <sup>3)</sup></b>				
Intercontinental	88.5%		86.3%	
<b>Freight Tonnes Kilometers (FTK, in 1000)</b>				
Intercontinental	97'757		1'043'705	

<sup>1)</sup> Revenue Passengers

<sup>2)</sup> SLF = RPK / ASK  
deviation in % pts

<sup>3)</sup> Including mail  
deviation in % pts

## Traffic Statistics December 2005 LX Scheduled Services



	December		Cumulative	
	2005	2004	2005	2004
<b>Number of Passengers <sup>1)</sup></b>				
Europe	516'269		6'915'548	
Intercontinental	180'093		2'272'208	
Total	696'362		9'187'756	
<b>Flights</b>				
Europe	10'192		127'659	
Intercontinental	1'318		15'991	
Total	11'510		143'650	
<b>Available Seat km (ASK, in mill)</b>				
Europe	688		8'492	
Intercontinental	1'479		18'990	
Total	2'167		27'483	
<b>Revenue Passenger km (RPK, in mill)</b>				
Europe	381		5'164	
Intercontinental	1'210		15'432	
Total	1'592		20'596	
<b>Seat Load Factor (SLF %) <sup>2)</sup></b>				
Europe	55.5%		60.8%	
Intercontinental	81.8%		81.3%	
Total	73.5%		74.9%	
<b>Freight Load Factor (%) <sup>3)</sup></b>				
Intercontinental	87.2%		86.3%	
<b>Freight Tonnes Kilometers (FTK, in 1000)</b>				
Intercontinental	97'713		1'141'418	

<sup>1)</sup> Revenue Passengers

<sup>2)</sup> SLF = RPK / ASK  
deviation in % pts

<sup>3)</sup> Including mail  
deviation in % pts