

SWISS traffic figures

January-March 2006



SWISS reports stable first-quarter seat load factor

SWISS maintained its seat load factor at stable levels in the first three months of 2006. Systemwide seat load factor for January to March amounted to 74.4%. The 0.2-percentage-point increase on the prior-year period is all the more encouraging given that the positive impact of the Easter holiday, which fell in March in 2005 and was thus included in first-quarter results, will not be felt until April in the present year. Intercontinental seat load factor for the quarter was a slight 1.0 percentage points down year-on-year at a still-high 80.6%, while European seat load factor rose 2.4 percentage points to 61.1%. SWISS carried around 2.2 million passengers on its scheduled services in the 2006 first-quarter period, a 1.9% increase on January-to-March 2005.

Systemwide seat load factor for the month of March totalled 77.9% (which compares to 78.1% for March 2005). Seat load factor for intercontinental services amounted to 82.7% (prior year: 84.2%). European seat load factor was up 2.1 percentage points at 67.8%. SWISS carried 843 565 passengers on its scheduled services during the month, 2.1% more than in March 2005.

SWISS's March seat load factor for its *intercontinental services* stood at 82.7%, down 1.5 percentage points from the 84.2% of March 2005. The slight decline is due largely to the fact that the positive effect of the Easter holiday season will be felt one month later in 2006, in the April results. Total capacity in available seat kilometres (ASK) was 4.4% higher than for the prior-year period. Total traffic volume in revenue passenger kilometres (RPK) rose 2.5% year-on-year.

Seat load factor for March 2006 on SWISS's North Atlantic services stood at 84.1% (prior year: 88.3%). Far East services reported a seat load factor of 85.0% (prior year: 84.4%). Services to and from the Middle East saw their seat load factor increase to 79.0% (prior year: 76.3%). Routes to Africa registered a seat load factor of 74.0% (prior year: 78.5%). Seat load factor on services to South America increased to 88.0% (prior year: 85.2%).

March seat load factor for SWISS's *European services* amounted to 67.8%, an increase of 2.1 percentage points on the same month last year. While ASK capacity was only 0.2% higher than in March 2005, RPK traffic volume was up 3.4% on the prior-year period.

While competition remained intense within Europe, SWISS reports a further increase in monthly seat load factors for its European routes. By using larger-capacity aircraft, the company has been able to maintain its European capacity at stable levels while simultaneously reducing the total number of flights: SWISS operated 14.4% fewer services in March 2006, for example, than in the same month last year. This helps reduce unit costs, and this in turn is giving SWISS greater competitive scope in the market arena.

The airfreight business of SWISS's *Swiss WorldCargo* division showed positive overall trends in the first three months of 2006. Cargo load factor (by volume) stood at 87.8%, up 0.6 percentage points on the first quarter of 2005.

Traffic Statistics January-December 2006
LX Scheduled Services



	Passengers Europe	Passengers Intercontinental	Passengers Total	SLF Europe	SLF Intercontinental	SLF Total
Jan	506'366	173'527	679'893	55.5%	80.8%	72.7%
Feb	514'312	155'924	670'236	59.5%	78.1%	72.1%
Mar	654'367	189'198	843'565	67.8%	82.7%	77.9%
Apr						
May						
Jun						
Jul						
Aug						
Sep						
Oct						
Nov						
Dec						

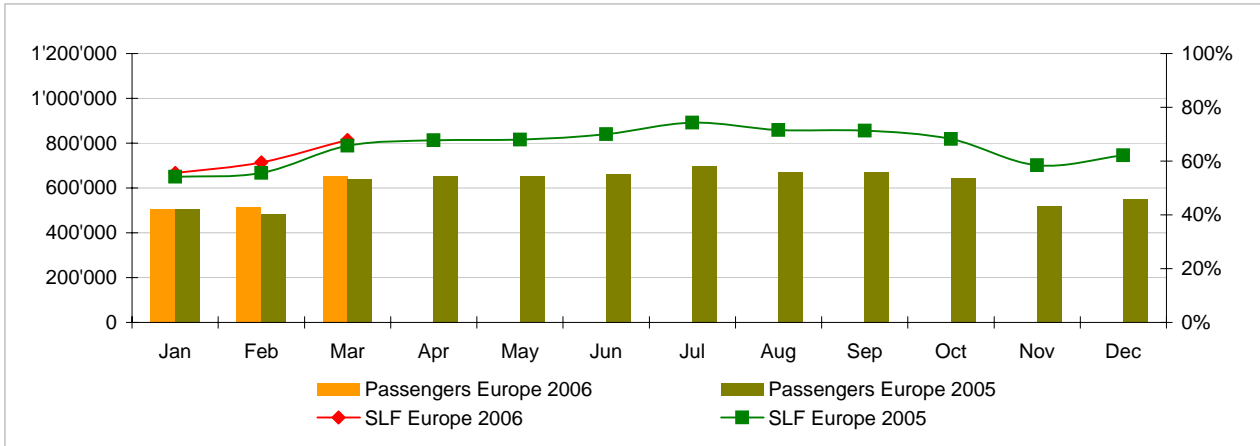
Comparison Passengers and Seat Load Factor (SLF %) versus prior year



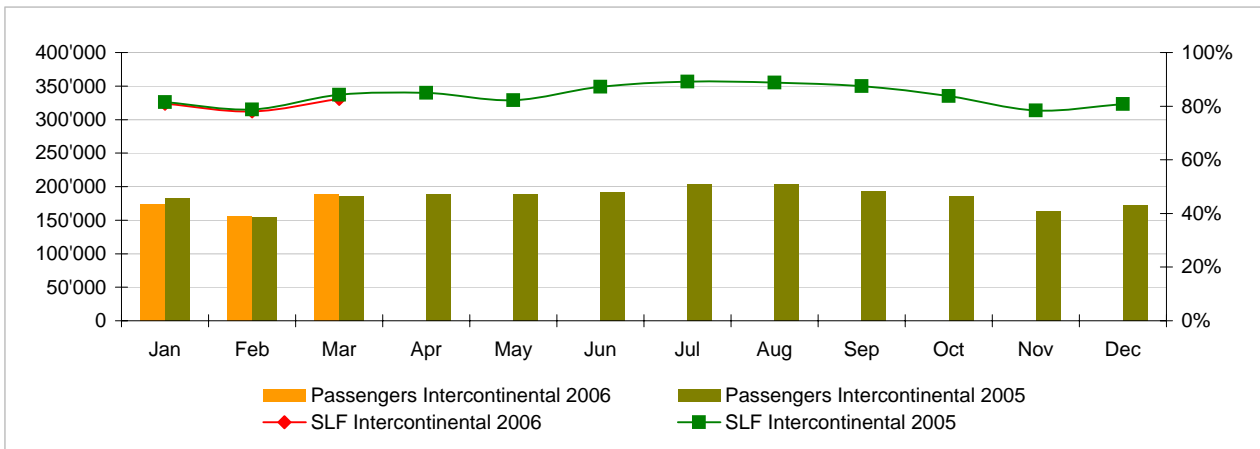
Next updates:

- April 06 figures May 9, 2006
- May 06 figures June 9, 2006
- June 06 figures July 11, 2006

Passengers and Seat Load Factor (SLF %) European Routes
Comparison versus prior year



Passengers and Seat Load Factor (SLF %) Intercontinental Routes
Comparison versus prior year



Traffic Statistics January 2006 LX Scheduled Services



Swiss
International
Air Lines

	January			Cumulative		
	2006	2005		2006	2005	
Number of Passengers ¹⁾						
Europe	506'366	505'995	0.1%	506'366	505'995	0.1%
Intercontinental	173'527	182'671	-5.0%	173'527	182'671	-5.0%
Total	679'893	688'666	-1.3%	679'893	688'666	-1.3%
Flights						
Europe	8'823	10'241	-13.8%	8'823	10'241	-13.8%
Intercontinental	1'358	1'366	-0.6%	1'358	1'366	-0.6%
Total	10'181	11'607	-12.3%	10'181	11'607	-12.3%
Available Seat km (ASK, in mill)						
Europe	691	690	0.2%	691	690	0.2%
Intercontinental	1'450	1'500	-3.3%	1'450	1'500	-3.3%
Total	2'141	2'190	-2.2%	2'141	2'190	-2.2%
Revenue Passenger km (RPK, in mill)						
Europe	384	374	2.7%	384	374	2.7%
Intercontinental	1'172	1'223	-4.2%	1'172	1'223	-4.2%
Total	1'556	1'597	-2.6%	1'556	1'597	-2.6%
Seat Load Factor (SLF %) ²⁾						
Europe	55.5%	54.2%	1.3%	55.5%	54.2%	1.3%
Intercontinental	80.8%	81.6%	-0.8%	80.8%	81.6%	-0.8%
Total	72.7%	72.9%	-0.2%	72.7%	72.9%	-0.2%
Freight Load Factor (%) ³⁾						
Intercontinental	83.2%	82.4%	0.8%	83.2%	82.4%	0.8%
Freight Tonnes Kilometers (FTK, in 1000)						
Intercontinental	87'467	89'097	-1.8%	87'467	89'097	-1.8%

¹⁾ Revenue Passengers

²⁾ SLF = RPK / ASK
deviation in % pts

³⁾ Including mail
deviation in % pts

Traffic Statistics February 2006 LX Scheduled Services



Swiss
International
Air Lines

	February			Cumulative		
	2006	2005		2006	2005	
Number of Passengers ¹⁾						
Europe	514'312	484'640	6.1%	1'020'678	990'635	3.0%
Intercontinental	155'924	154'540	0.9%	329'451	337'211	-2.3%
Total	670'236	639'180	4.9%	1'350'129	1'327'846	1.7%
Flights						
Europe	8'134	9'511	-14.5%	16'957	19'752	-14.2%
Intercontinental	1'256	1'234	1.8%	2'614	2'600	0.5%
Total	9'390	10'745	-12.6%	19'571	22'352	-12.4%
Available Seat km (ASK, in mill)						
Europe	636	632	0.8%	1'328	1'322	0.4%
Intercontinental	1'343	1'314	2.2%	2'792	2'814	-0.8%
Total	1'979	1'946	1.7%	4'120	4'136	-0.4%
Revenue Passenger km (RPK, in mill)						
Europe	379	351	7.9%	763	725	5.2%
Intercontinental	1'048	1'035	1.3%	2'221	2'258	-1.7%
Total	1'427	1'386	3.0%	2'983	2'983	0.0%
Seat Load Factor (SLF %) ²⁾						
Europe	59.5%	55.6%	3.9%	57.5%	54.8%	2.7%
Intercontinental	78.1%	78.7%	-0.6%	79.5%	80.2%	-0.7%
Total	72.1%	71.2%	0.9%	72.4%	72.1%	0.3%
Freight Load Factor (%) ³⁾						
Intercontinental	90.4%	89.9%	0.5%	86.7%	86.1%	0.6%
Freight Tonnes Kilometers (FTK, in 1000)						
Intercontinental	91'190	89'653	1.7%	178'657	178'750	-0.1%

¹⁾ Revenue Passengers

²⁾ SLF = RPK / ASK
deviation in % pts

³⁾ Including mail
deviation in % pts

Traffic Statistics March 2006 LX Scheduled Services



	March			Cumulative		
	2006	2005		2006	2005	
Number of Passengers ¹⁾						
Europe	654'367	640'333	2.2%	1'675'045	1'630'968	2.7%
Intercontinental	189'198	185'569	2.0%	518'649	522'780	-0.8%
Total	843'565	825'902	2.1%	2'193'694	2'153'748	1.9%
Flights						
Europe	9'047	10'572	-14.4%	26'004	30'324	-14.2%
Intercontinental	1'414	1'385	2.1%	4'028	3'985	1.1%
Total	10'461	11'957	-12.5%	30'032	34'309	-12.5%
Available Seat km (ASK, in mill)						
Europe	727	725	0.2%	2'054	2'047	0.3%
Intercontinental	1'539	1'474	4.4%	4'331	4'288	1.0%
Total	2'265	2'199	3.0%	6'386	6'336	0.8%
Revenue Passenger km (RPK, in mill)						
Europe	493	477	3.4%	1'256	1'202	4.5%
Intercontinental	1'273	1'242	2.5%	3'493	3'500	-0.2%
Total	1'765	1'719	2.7%	4'749	4'702	1.0%
Seat Load Factor (SLF %) ²⁾						
Europe	67.8%	65.7%	2.1%	61.1%	58.7%	2.4%
Intercontinental	82.7%	84.2%	-1.5%	80.6%	81.6%	-1.0%
Total	77.9%	78.1%	-0.2%	74.4%	74.2%	0.2%
Estimate Freight Load Factor (%) ³⁾						
Intercontinental	89.9%	89.0%	0.9%	87.8%	87.1%	0.6%
Estimate Freight Tonnes Kilometers (FTK, in 1000)						
Intercontinental	104'324	98'689	5.7%	282'981	277'439	2.0%

¹⁾ Revenue Passengers

²⁾ SLF = RPK / ASK
deviation in % pts

³⁾ Including mail
deviation in % pts

Traffic Statistics April 2006 LX Scheduled Services



	April		Cumulative	
	2006	2005	2006	2005
Number of Passengers ¹⁾				
Europe	654'672		2'285'640	
Intercontinental	188'133		710'913	
Total	842'805		2'996'553	
Flights				
Europe	10'284		40'608	
Intercontinental	1'385		5'370	
Total	11'669		45'978	
Available Seat km (ASK, in mill)				
Europe	723		2'770	
Intercontinental	1'489		5'778	
Total	2'212		8'548	
Revenue Passenger km (RPK, in mill)				
Europe	490		1'692	
Intercontinental	1'266		4'766	
Total	1'756		6'457	
Seat Load Factor (SLF %) ²⁾				
Europe	67.8%		61.1%	
Intercontinental	85.0%		82.5%	
Total	79.4%		75.5%	
Freight Load Factor (%) ³⁾				
Intercontinental	86.9%		87.0%	
Freight Tonnes Kilometers (FTK, in 1000)				
Intercontinental	97'169		374'608	

¹⁾ Revenue Passengers

²⁾ SLF = RPK / ASK
deviation in % pts

³⁾ Including mail
deviation in % pts

Traffic Statistics May 2006 LX Scheduled Services



	May		Cumulative	
	2006	2005	2006	2005
Number of Passengers ¹⁾				
Europe	650'951		2'936'591	
Intercontinental	187'997		898'910	
Total	838'948		3'835'501	
Flights				
Europe	10'186		50'794	
Intercontinental	1'427		6'797	
Total	11'613		57'591	
Available Seat km (ASK, in mill)				
Europe	734		3'505	
Intercontinental	1'529		7'306	
Total	2'263		10'811	
Revenue Passenger km (RPK, in mill)				
Europe	500		2'191	
Intercontinental	1'257		6'022	
Total	1'756		8'214	
Seat Load Factor (SLF %) ²⁾				
Europe	68.0%		62.5%	
Intercontinental	82.2%		82.4%	
Total	77.6%		76.0%	
Freight Load Factor (%) ³⁾				
Intercontinental	83.5%		86.2%	
Freight Tonnes Kilometers (FTK, in 1000)				
Intercontinental	95'602		470'210	

¹⁾ Revenue Passengers

²⁾ SLF = RPK / ASK
deviation in % pts

³⁾ Including mail
deviation in % pts

Traffic Statistics June 2006 LX Scheduled Services



Swiss
International
Air Lines

	June		Cumulative	
	2006	2005	2006	2005
Number of Passengers ¹⁾				
Europe	661'327		3'597'918	
Intercontinental	191'291		1'090'201	
Total	852'618		4'688'119	
Flights				
Europe	10'014		60'808	
Intercontinental	1'376		8'173	
Total	11'390		68'981	
Available Seat km (ASK, in mill)				
Europe	725		4'229	
Intercontinental	1'478		8'785	
Total	2'203		13'014	
Revenue Passenger km (RPK, in mill)				
Europe	508		2'699	
Intercontinental	1'289		7'311	
Total	1'796		10'010	
Seat Load Factor (SLF %) ²⁾				
Europe	70.0%		63.8%	
Intercontinental	87.2%		83.2%	
Total	81.5%		76.9%	
Freight Load Factor (%) ³⁾				
Intercontinental	84.9%		86.0%	
Freight Tonnes Kilometers (FTK, in 1000)				
Intercontinental	96'062		566'272	

¹⁾ Revenue Passengers

²⁾ SLF = RPK / ASK
deviation in % pts

³⁾ Including mail
deviation in % pts

Traffic Statistics July 2006 LX Scheduled Services



	July		Cumulative	
	2006	2005	2006	2005
Number of Passengers ¹⁾				
Europe	697'794		4'295'712	
Intercontinental	203'941		1'294'142	
Total	901'735		5'589'854	
Flights				
Europe	9'886		70'694	
Intercontinental	1'424		9'597	
Total	11'310		80'291	
Available Seat km (ASK, in mill)				
Europe	748		4'978	
Intercontinental	1'531		10'316	
Total	2'279		15'293	
Revenue Passenger km (RPK, in mill)				
Europe	556		3'255	
Intercontinental	1'365		8'676	
Total	1'921		11'931	
Seat Load Factor (SLF %) ²⁾				
Europe	74.3%		65.4%	
Intercontinental	89.2%		84.1%	
Total	84.3%		78.0%	
Freight Load Factor (%) ³⁾				
Intercontinental	85.4%		85.9%	
Freight Tonnes Kilometers (FTK, in 1000)				
Intercontinental	97'047		663'319	

¹⁾ Revenue Passengers

²⁾ SLF = RPK / ASK
deviation in % pts

³⁾ Including mail
deviation in % pts

Traffic Statistics August 2006 LX Scheduled Services



	August		Cumulative	
	2006	2005	2006	2005
Number of Passengers ¹⁾				
Europe	672'321		4'968'033	
Intercontinental	204'009		1'498'151	
Total	876'330		6'466'184	
Flights				
Europe	9'884		80'578	
Intercontinental	1'420		11'017	
Total	11'304		91'595	
Available Seat km (ASK, in mill)				
Europe	755		5'732	
Intercontinental	1'531		11'847	
Total	2'286		17'579	
Revenue Passenger km (RPK, in mill)				
Europe	540		3'794	
Intercontinental	1'360		10'036	
Total	1'899		13'830	
Seat Load Factor (SLF %) ²⁾				
Europe	71.5%		66.2%	
Intercontinental	88.8%		84.7%	
Total	83.1%		78.7%	
Freight Load Factor (%) ³⁾				
Intercontinental	84.1%		85.7%	
Freight Tonnes Kilometers (FTK, in 1000)				
Intercontinental	91'471		754'790	

¹⁾ Revenue Passengers

²⁾ SLF = RPK / ASK
deviation in % pts

³⁾ Including mail
deviation in % pts

Traffic Statistics September 2006 LX Scheduled Services



	September		Cumulative	
	2006	2005	2006	2005
Number of Passengers ¹⁾				
Europe	670'187		5'638'220	
Intercontinental	193'612		1'691'763	
Total	863'799		7'329'983	
Flights				
Europe	9'689		90'267	
Intercontinental	1'386		12'403	
Total	11'075		102'670	
Available Seat km (ASK, in mill)				
Europe	717		6'449	
Intercontinental	1'485		13'332	
Total	2'202		19'781	
Revenue Passenger km (RPK, in mill)				
Europe	511		4'306	
Intercontinental	1'298		11'334	
Total	1'809		15'640	
Seat Load Factor (SLF %) ²⁾				
Europe	71.3%		66.8%	
Intercontinental	87.4%		85.0%	
Total	82.2%		79.1%	
Freight Load Factor (%) ³⁾				
Intercontinental	87.7%		85.9%	
Freight Tonnes Kilometers (FTK, in 1000)				
Intercontinental	96'214		851'004	

¹⁾ Revenue Passengers

²⁾ SLF = RPK / ASK
deviation in % pts

³⁾ Including mail
deviation in % pts

Traffic Statistics October 2006 LX Scheduled Services



Swiss
International
Air Lines

	October		Cumulative	
	2006	2005	2006	2005
Number of Passengers ¹⁾				
Europe	642'720		6'280'940	
Intercontinental	186'384		1'878'147	
Total	829'104		8'159'087	
Flights				
Europe	9'720		99'987	
Intercontinental	1'403		13'806	
Total	11'123		113'793	
Available Seat km (ASK, in mill)				
Europe	714		7'163	
Intercontinental	1'514		14'846	
Total	2'228		22'010	
Revenue Passenger km (RPK, in mill)				
Europe	487		4'793	
Intercontinental	1'268		12'602	
Total	1'755		17'394	
Seat Load Factor (SLF %) ²⁾				
Europe	68.2%		66.9%	
Intercontinental	83.7%		84.9%	
Total	78.8%		79.0%	
Freight Load Factor (%) ³⁾				
Intercontinental	89.0%		86.2%	
Freight Tonnes Kilometers (FTK, in 1000)				
Intercontinental	99'197		950'201	

¹⁾ Revenue Passengers

²⁾ SLF = RPK / ASK
deviation in % pts

³⁾ Including mail
deviation in % pts

Traffic Statistics November 2006 LX Scheduled Services



	November		Cumulative	
	2006	2005	2006	2005
Number of Passengers ¹⁾				
Europe	520'531		6'801'471	
Intercontinental	163'875		2'042'022	
Total	684'406		8'843'493	
Flights				
Europe	8'619		108'606	
Intercontinental	1'315		15'121	
Total	9'934		123'727	
Available Seat km (ASK, in mill)				
Europe	652		7'815	
Intercontinental	1'409		16'255	
Total	2'061		24'070	
Revenue Passenger km (RPK, in mill)				
Europe	381		5'174	
Intercontinental	1'104		13'706	
Total	1'485		18'879	
Seat Load Factor (SLF %) ²⁾				
Europe	58.5%		66.2%	
Intercontinental	78.4%		84.3%	
Total	72.1%		78.4%	
Freight Load Factor (%) ³⁾				
Intercontinental	89.2%		86.5%	
Freight Tonnes Kilometers (FTK, in 1000)				
Intercontinental	92'962		1'043'163	

¹⁾ Revenue Passengers

²⁾ SLF = RPK / ASK
deviation in % pts

³⁾ Including mail
deviation in % pts

Traffic Statistics December 2006 LX Scheduled Services



Swiss
International
Air Lines

	December		Cumulative	
	2006	2005	2006	2005
Number of Passengers ¹⁾				
Europe	548'480		7'349'951	
Intercontinental	172'533		2'214'555	
Total	721'013		9'564'506	
Flights				
Europe	8'631		117'237	
Intercontinental	1'359		16'480	
Total	9'990		133'717	
Available Seat km (ASK, in mill)				
Europe	672		8'487	
Intercontinental	1'451		17'706	
Total	2'123		26'193	
Revenue Passenger km (RPK, in mill)				
Europe	418		5'591	
Intercontinental	1'172		14'878	
Total	1'590		20'469	
Seat Load Factor (SLF %) ²⁾				
Europe	62.2%		65.9%	
Intercontinental	80.8%		84.0%	
Total	74.9%		78.1%	
Freight Load Factor (%) ³⁾				
Intercontinental	86.7%		86.5%	
Freight Tonnes Kilometers (FTK, in 1000)				
Intercontinental	99'115		1'142'278	

¹⁾ Revenue Passengers

²⁾ SLF = RPK / ASK
deviation in % pts

³⁾ Including mail
deviation in % pts