

SWISS traffic figures

May 2006



SWISS raises its seat load factor in May, too

SWISS achieved a systemwide seat load factor of 78.5% for May 2006 (prior year: 77.6%). Seat load factor on intercontinental services amounted to 81.4% (prior year: 82.2%). On the SWISS European network, the seat load factor of 72.4% was a 4.4-percentage-point improvement on the same month last year. SWISS carried a total of 920 698 passengers in May 2006, a substantial 9.7% increase on the prior-year period.

The 81.4% seat load factor which SWISS recorded on its *intercontinental routes* for May 2006 fell slightly short of the 82.2% achieved in the same month in 2005. While available-seat-kilometre (ASK) capacity for the month was a 4.0% increase year-on-year, revenue-passenger-kilometre (RPK) traffic volume rose by 3.0% over the same period.

May 2006 seat load factor for SWISS's North Atlantic services stood at 86.9% (prior year: 90.7%). Seat load factor on Far East routes rose 1.5 percentage points to 82.4% (prior year: 80.9%). Services to and from the Middle East saw a seat load factor of 75.4% (prior year: 78.1%). Seat load factor on SWISS's African flights was up 2.7 percentage points at 69.6% (prior year: 66.9%). And seat load factor on South America services remained broadly unchanged at 75.7% (prior year: 75.5%).

SWISS raised May seat load factor for its *European services* by 4.4 percentage points year-on-year. Seat load factor for May 2006 stood at 72.4% (prior year: 68.0%). While European ASK capacity was up 5.5% on the same month in 2005, RPK traffic volume increased by a substantially higher 12.3%.

SWISS not only significantly improved its seat load factor in Europe in May 2006; in response to the increase in capacity, the carrier also transported a sizeable 12.0% more passengers than for the same month last year. The realignment of the European fleet to changed market conditions which was initiated in 2005 and the more productive use of the European and long-haul fleets are both delivering positive results.

Traffic Statistics January-December 2006
LX Scheduled Services



	Passengers Europe	Passengers Intercontinental	Passengers Total	SLF Europe	SLF Intercontinental	SLF Total
Jan	506'366	173'527	679'893	55.5%	80.8%	72.7%
Feb	514'312	155'924	670'236	59.5%	78.1%	72.1%
Mar	654'367	189'198	843'565	67.8%	82.7%	77.9%
Apr	714'990	188'257	903'247	74.2%	83.9%	80.7%
May	729'332	191'366	920'698	72.4%	81.4%	78.5%
Jun						
Jul						
Aug						
Sep						
Oct						
Nov						
Dec						

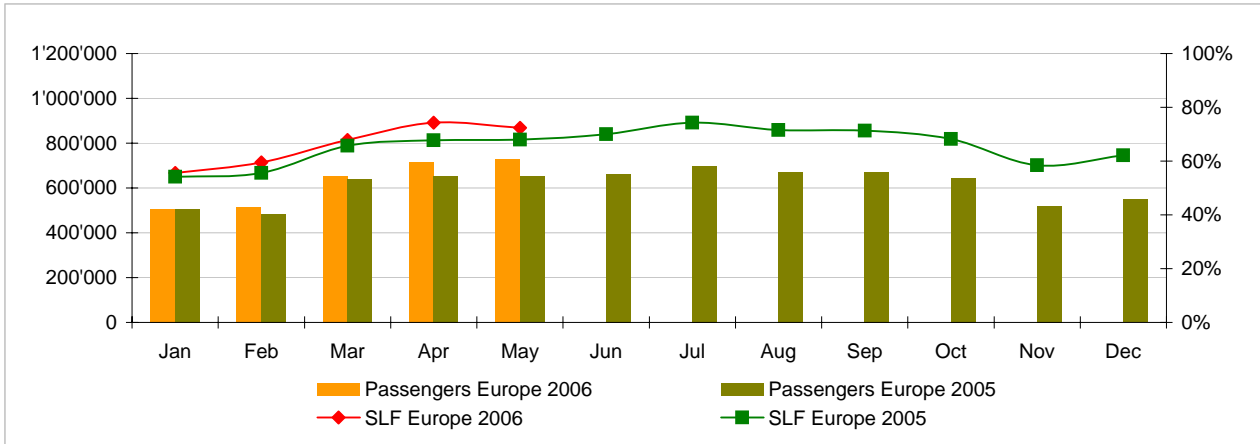
Comparison Passengers and Seat Load Factor (SLF %) versus prior year



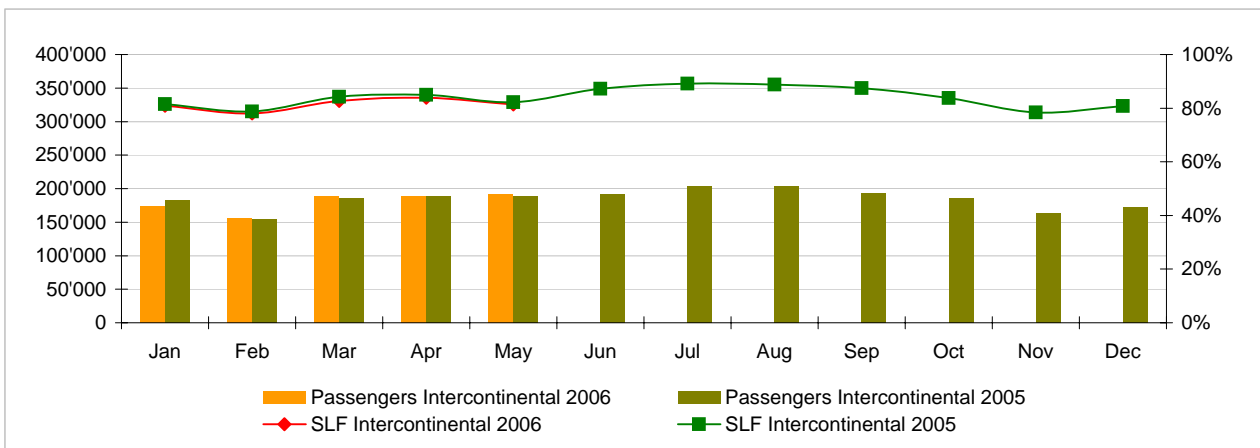
Next updates:

- June 06 figures July 11, 2006
- July 06 figures August 9, 2006
- August 06 figures September 12, 2006

Passengers and Seat Load Factor (SLF %) European Routes
Comparison versus prior year



Passengers and Seat Load Factor (SLF %) Intercontinental Routes
Comparison versus prior year



Traffic Statistics January 2006 LX Scheduled Services



Swiss
International
Air Lines

	January			Cumulative		
	2006	2005		2006	2005	
Number of Passengers ¹⁾						
Europe	506'366	505'995	0.1%	506'366	505'995	0.1%
Intercontinental	173'527	182'671	-5.0%	173'527	182'671	-5.0%
Total	679'893	688'666	-1.3%	679'893	688'666	-1.3%
Flights						
Europe	8'823	10'241	-13.8%	8'823	10'241	-13.8%
Intercontinental	1'358	1'366	-0.6%	1'358	1'366	-0.6%
Total	10'181	11'607	-12.3%	10'181	11'607	-12.3%
Available Seat km (ASK, in mill)						
Europe	691	690	0.2%	691	690	0.2%
Intercontinental	1'450	1'500	-3.3%	1'450	1'500	-3.3%
Total	2'141	2'190	-2.2%	2'141	2'190	-2.2%
Revenue Passenger km (RPK, in mill)						
Europe	384	374	2.7%	384	374	2.7%
Intercontinental	1'172	1'223	-4.2%	1'172	1'223	-4.2%
Total	1'556	1'597	-2.6%	1'556	1'597	-2.6%
Seat Load Factor (SLF %) ²⁾						
Europe	55.5%	54.2%	1.3%	55.5%	54.2%	1.3%
Intercontinental	80.8%	81.6%	-0.8%	80.8%	81.6%	-0.8%
Total	72.7%	72.9%	-0.2%	72.7%	72.9%	-0.2%
Freight Load Factor (%) ³⁾						
Intercontinental	83.2%	82.4%	0.8%	83.2%	82.4%	0.8%
Freight Tonnes Kilometers (FTK, in 1000)						
Intercontinental	87'467	89'097	-1.8%	87'467	89'097	-1.8%

¹⁾ Revenue Passengers

²⁾ SLF = RPK / ASK
deviation in % pts

³⁾ Including mail
deviation in % pts

Traffic Statistics February 2006 LX Scheduled Services



	February			Cumulative		
	2006	2005		2006	2005	
Number of Passengers ¹⁾						
Europe	514'312	484'640	6.1%	1'020'678	990'635	3.0%
Intercontinental	155'924	154'540	0.9%	329'451	337'211	-2.3%
Total	670'236	639'180	4.9%	1'350'129	1'327'846	1.7%
Flights						
Europe	8'134	9'511	-14.5%	16'957	19'752	-14.2%
Intercontinental	1'256	1'234	1.8%	2'614	2'600	0.5%
Total	9'390	10'745	-12.6%	19'571	22'352	-12.4%
Available Seat km (ASK, in mill)						
Europe	636	632	0.8%	1'328	1'322	0.4%
Intercontinental	1'343	1'314	2.2%	2'792	2'814	-0.8%
Total	1'979	1'946	1.7%	4'120	4'136	-0.4%
Revenue Passenger km (RPK, in mill)						
Europe	379	351	7.9%	763	725	5.2%
Intercontinental	1'048	1'035	1.3%	2'221	2'258	-1.7%
Total	1'427	1'386	3.0%	2'983	2'983	0.0%
Seat Load Factor (SLF %) ²⁾						
Europe	59.5%	55.6%	3.9%	57.5%	54.8%	2.7%
Intercontinental	78.1%	78.7%	-0.6%	79.5%	80.2%	-0.7%
Total	72.1%	71.2%	0.9%	72.4%	72.1%	0.3%
Freight Load Factor (%) ³⁾						
Intercontinental	90.4%	89.9%	0.5%	86.7%	86.1%	0.6%
Freight Tonnes Kilometers (FTK, in 1000)						
Intercontinental	91'190	89'653	1.7%	178'657	178'750	-0.1%

¹⁾ Revenue Passengers

²⁾ SLF = RPK / ASK
deviation in % pts

³⁾ Including mail
deviation in % pts

Traffic Statistics March 2006 LX Scheduled Services



Swiss
International
Air Lines

	March			Cumulative		
	2006	2005		2006	2005	
Number of Passengers ¹⁾						
Europe	654'367	640'333	2.2%	1'675'045	1'630'968	2.7%
Intercontinental	189'198	185'569	2.0%	518'649	522'780	-0.8%
Total	843'565	825'902	2.1%	2'193'694	2'153'748	1.9%
Flights						
Europe	9'047	10'572	-14.4%	26'004	30'324	-14.2%
Intercontinental	1'414	1'385	2.1%	4'028	3'985	1.1%
Total	10'461	11'957	-12.5%	30'032	34'309	-12.5%
Available Seat km (ASK, in mill)						
Europe	727	725	0.2%	2'054	2'047	0.3%
Intercontinental	1'539	1'474	4.4%	4'331	4'288	1.0%
Total	2'265	2'199	3.0%	6'386	6'336	0.8%
Revenue Passenger km (RPK, in mill)						
Europe	493	477	3.4%	1'256	1'202	4.5%
Intercontinental	1'273	1'242	2.5%	3'493	3'500	-0.2%
Total	1'765	1'719	2.7%	4'749	4'702	1.0%
Seat Load Factor (SLF %) ²⁾						
Europe	67.8%	65.7%	2.1%	61.1%	58.7%	2.4%
Intercontinental	82.7%	84.2%	-1.5%	80.6%	81.6%	-1.0%
Total	77.9%	78.1%	-0.2%	74.4%	74.2%	0.2%
Freight Load Factor (%) ³⁾						
Intercontinental	89.7%	89.0%	0.7%	87.8%	87.1%	0.7%
Freight Tonnes Kilometers (FTK, in 1000)						
Intercontinental	103'323	98'689	4.7%	281'980	277'439	1.6%

¹⁾ Revenue Passengers

²⁾ SLF = RPK / ASK
deviation in % pts

³⁾ Including mail
deviation in % pts

Traffic Statistics April 2006 LX Scheduled Services



Swiss
International
Air Lines

	April			Cumulative		
	2006	2005		2006	2005	
Number of Passengers ¹⁾						
Europe	714'990	654'672	9.2%	2'390'035	2'285'640	4.6%
Intercontinental	188'257	188'133	0.1%	706'906	710'913	-0.6%
Total	903'247	842'805	7.2%	3'096'941	2'996'553	3.4%
Flights						
Europe	9'032	10'284	-12.2%	35'036	40'608	-13.7%
Intercontinental	1'340	1'385	-3.2%	5'368	5'370	0.0%
Total	10'372	11'669	-11.1%	40'404	45'978	-12.1%
Available Seat km (ASK, in mill)						
Europe	748	723	3.4%	2'802	2'770	1.2%
Intercontinental	1'514	1'489	1.7%	5'846	5'778	1.2%
Total	2'262	2'212	2.3%	8'648	8'548	1.2%
Revenue Passenger km (RPK, in mill)						
Europe	555	490	13.3%	1'811	1'692	7.0%
Intercontinental	1'271	1'266	0.4%	4'764	4'766	0.0%
Total	1'826	1'756	4.0%	6'575	6'457	1.8%
Seat Load Factor (SLF %) ²⁾						
Europe	74.2%	67.8%	6.4%	64.6%	61.1%	3.5%
Intercontinental	83.9%	85.0%	-1.1%	81.5%	82.5%	-1.0%
Total	80.7%	79.4%	1.3%	76.0%	75.5%	0.5%
Freight Load Factor (%) ³⁾						
Intercontinental	83.9%	86.9%	-3.0%	86.8%	87.0%	-0.2%
Freight Tonnes Kilometers (FTK, in 1000)						
Intercontinental	85'845	97'169	-11.7%	367'825	374'608	-1.8%

¹⁾ Revenue Passengers

²⁾ SLF = RPK / ASK
deviation in % pts

³⁾ Including mail
deviation in % pts

Traffic Statistics May 2006 LX Scheduled Services



Swiss
International
Air Lines

	May			Cumulative		
	2006	2005		2006	2005	
Number of Passengers ¹⁾						
Europe	729'332	650'951	12.0%	3'119'367	2'936'591	6.2%
Intercontinental	191'366	187'997	1.8%	898'272	898'910	-0.1%
Total	920'698	838'948	9.7%	4'017'639	3'835'501	4.7%
Flights						
Europe	9'438	10'186	-7.3%	44'474	50'794	-12.4%
Intercontinental	1'382	1'427	-3.2%	6'750	6'797	-0.7%
Total	10'820	11'613	-6.8%	51'224	57'591	-11.1%
Available Seat km (ASK, in mill)						
Europe	775	734	5.5%	3'577	3'505	2.1%
Intercontinental	1'589	1'529	4.0%	7'435	7'306	1.8%
Total	2'364	2'263	4.5%	11'012	10'811	1.9%
Revenue Passenger km (RPK, in mill)						
Europe	561	500	12.3%	2'372	2'191	8.2%
Intercontinental	1'294	1'257	3.0%	6'057	6'022	0.6%
Total	1'855	1'756	5.6%	8'429	8'214	2.6%
Seat Load Factor (SLF %) ²⁾						
Europe	72.4%	68.0%	4.4%	66.3%	62.5%	3.8%
Intercontinental	81.4%	82.2%	-0.8%	81.5%	82.4%	-0.9%
Total	78.5%	77.6%	0.9%	76.5%	76.0%	0.5%
Estimate Freight Load Factor (%) ³⁾						
Intercontinental	81.1%	83.5%	-2.4%	85.7%	86.2%	-0.5%
Estimate Freight Tonnes Kilometers (FTK, in 1000)						
Intercontinental	89'373	95'602	-6.5%	457'198	470'210	-2.8%

¹⁾ Revenue Passengers

²⁾ SLF = RPK / ASK
deviation in % pts

³⁾ Including mail
deviation in % pts

Traffic Statistics June 2006 LX Scheduled Services



	June		Cumulative	
	2006	2005	2006	2005
Number of Passengers ¹⁾				
Europe	661'327		3'597'918	
Intercontinental	191'291		1'090'201	
Total	852'618		4'688'119	
Flights				
Europe	10'014		60'808	
Intercontinental	1'376		8'173	
Total	11'390		68'981	
Available Seat km (ASK, in mill)				
Europe	725		4'229	
Intercontinental	1'478		8'785	
Total	2'203		13'014	
Revenue Passenger km (RPK, in mill)				
Europe	508		2'699	
Intercontinental	1'289		7'311	
Total	1'796		10'010	
Seat Load Factor (SLF %) ²⁾				
Europe	70.0%		63.8%	
Intercontinental	87.2%		83.2%	
Total	81.5%		76.9%	
Freight Load Factor (%) ³⁾				
Intercontinental	84.9%		86.0%	
Freight Tonnes Kilometers (FTK, in 1000)				
Intercontinental	96'062		566'272	

¹⁾ Revenue Passengers

²⁾ SLF = RPK / ASK
deviation in % pts

³⁾ Including mail
deviation in % pts

Traffic Statistics July 2006 LX Scheduled Services



Swiss
International
Air Lines

	July		Cumulative	
	2006	2005	2006	2005
Number of Passengers ¹⁾				
Europe	697'794		4'295'712	
Intercontinental	203'941		1'294'142	
Total	901'735		5'589'854	
Flights				
Europe	9'886		70'694	
Intercontinental	1'424		9'597	
Total	11'310		80'291	
Available Seat km (ASK, in mill)				
Europe	748		4'978	
Intercontinental	1'531		10'316	
Total	2'279		15'293	
Revenue Passenger km (RPK, in mill)				
Europe	556		3'255	
Intercontinental	1'365		8'676	
Total	1'921		11'931	
Seat Load Factor (SLF %) ²⁾				
Europe	74.3%		65.4%	
Intercontinental	89.2%		84.1%	
Total	84.3%		78.0%	
Freight Load Factor (%) ³⁾				
Intercontinental	85.4%		85.9%	
Freight Tonnes Kilometers (FTK, in 1000)				
Intercontinental	97'047		663'319	

¹⁾ Revenue Passengers

²⁾ SLF = RPK / ASK
deviation in % pts

³⁾ Including mail
deviation in % pts

Traffic Statistics August 2006 LX Scheduled Services



Swiss
International
Air Lines

	August		Cumulative	
	2006	2005	2006	2005
Number of Passengers ¹⁾				
Europe	672'321		4'968'033	
Intercontinental	204'009		1'498'151	
Total	876'330		6'466'184	
Flights				
Europe	9'884		80'578	
Intercontinental	1'420		11'017	
Total	11'304		91'595	
Available Seat km (ASK, in mill)				
Europe	755		5'732	
Intercontinental	1'531		11'847	
Total	2'286		17'579	
Revenue Passenger km (RPK, in mill)				
Europe	540		3'794	
Intercontinental	1'360		10'036	
Total	1'899		13'830	
Seat Load Factor (SLF %) ²⁾				
Europe	71.5%		66.2%	
Intercontinental	88.8%		84.7%	
Total	83.1%		78.7%	
Freight Load Factor (%) ³⁾				
Intercontinental	84.1%		85.7%	
Freight Tonnes Kilometers (FTK, in 1000)				
Intercontinental	91'471		754'790	

¹⁾ Revenue Passengers

²⁾ SLF = RPK / ASK
deviation in % pts

³⁾ Including mail
deviation in % pts

Traffic Statistics September 2006 LX Scheduled Services



	September		Cumulative	
	2006	2005	2006	2005
Number of Passengers ¹⁾				
Europe	670'187		5'638'220	
Intercontinental	193'612		1'691'763	
Total	863'799		7'329'983	
Flights				
Europe	9'689		90'267	
Intercontinental	1'386		12'403	
Total	11'075		102'670	
Available Seat km (ASK, in mill)				
Europe	717		6'449	
Intercontinental	1'485		13'332	
Total	2'202		19'781	
Revenue Passenger km (RPK, in mill)				
Europe	511		4'306	
Intercontinental	1'298		11'334	
Total	1'809		15'640	
Seat Load Factor (SLF %) ²⁾				
Europe	71.3%		66.8%	
Intercontinental	87.4%		85.0%	
Total	82.2%		79.1%	
Freight Load Factor (%) ³⁾				
Intercontinental	87.7%		85.9%	
Freight Tonnes Kilometers (FTK, in 1000)				
Intercontinental	96'214		851'004	

¹⁾ Revenue Passengers

²⁾ SLF = RPK / ASK
deviation in % pts

³⁾ Including mail
deviation in % pts

Traffic Statistics October 2006 LX Scheduled Services



Swiss
International
Air Lines

	October		Cumulative	
	2006	2005	2006	2005
Number of Passengers ¹⁾				
Europe	642'720		6'280'940	
Intercontinental	186'384		1'878'147	
Total	829'104		8'159'087	
Flights				
Europe	9'720		99'987	
Intercontinental	1'403		13'806	
Total	11'123		113'793	
Available Seat km (ASK, in mill)				
Europe	714		7'163	
Intercontinental	1'514		14'846	
Total	2'228		22'010	
Revenue Passenger km (RPK, in mill)				
Europe	487		4'793	
Intercontinental	1'268		12'602	
Total	1'755		17'394	
Seat Load Factor (SLF %) ²⁾				
Europe	68.2%		66.9%	
Intercontinental	83.7%		84.9%	
Total	78.8%		79.0%	
Freight Load Factor (%) ³⁾				
Intercontinental	89.0%		86.2%	
Freight Tonnes Kilometers (FTK, in 1000)				
Intercontinental	99'197		950'201	

¹⁾ Revenue Passengers

²⁾ SLF = RPK / ASK
deviation in % pts

³⁾ Including mail
deviation in % pts

Traffic Statistics November 2006 LX Scheduled Services



Swiss
International
Air Lines

	November		Cumulative	
	2006	2005	2006	2005
Number of Passengers ¹⁾				
Europe	520'531		6'801'471	
Intercontinental	163'875		2'042'022	
Total	684'406		8'843'493	
Flights				
Europe	8'619		108'606	
Intercontinental	1'315		15'121	
Total	9'934		123'727	
Available Seat km (ASK, in mill)				
Europe	652		7'815	
Intercontinental	1'409		16'255	
Total	2'061		24'070	
Revenue Passenger km (RPK, in mill)				
Europe	381		5'174	
Intercontinental	1'104		13'706	
Total	1'485		18'879	
Seat Load Factor (SLF %) ²⁾				
Europe	58.5%		66.2%	
Intercontinental	78.4%		84.3%	
Total	72.1%		78.4%	
Freight Load Factor (%) ³⁾				
Intercontinental	89.2%		86.5%	
Freight Tonnes Kilometers (FTK, in 1000)				
Intercontinental	92'962		1'043'163	

¹⁾ Revenue Passengers

²⁾ SLF = RPK / ASK
deviation in % pts

³⁾ Including mail
deviation in % pts

Traffic Statistics December 2006 LX Scheduled Services



	December		Cumulative	
	2006	2005	2006	2005
Number of Passengers ¹⁾				
Europe	548'480		7'349'951	
Intercontinental	172'533		2'214'555	
Total	721'013		9'564'506	
Flights				
Europe	8'631		117'237	
Intercontinental	1'359		16'480	
Total	9'990		133'717	
Available Seat km (ASK, in mill)				
Europe	672		8'487	
Intercontinental	1'451		17'706	
Total	2'123		26'193	
Revenue Passenger km (RPK, in mill)				
Europe	418		5'591	
Intercontinental	1'172		14'878	
Total	1'590		20'469	
Seat Load Factor (SLF %) ²⁾				
Europe	62.2%		65.9%	
Intercontinental	80.8%		84.0%	
Total	74.9%		78.1%	
Freight Load Factor (%) ³⁾				
Intercontinental	86.7%		86.5%	
Freight Tonnes Kilometers (FTK, in 1000)				
Intercontinental	99'115		1'142'278	

¹⁾ Revenue Passengers

²⁾ SLF = RPK / ASK
deviation in % pts

³⁾ Including mail
deviation in % pts