



## Media release

Zurich Airport, April 12, 2007

### **SWISS raises seat load factor slightly in first quarter**

SWISS increased capacity utilisation in the first quarter of 2007 by 2.5 percentage points over the same period last year, achieving an average systemwide seat load factor (SLF) of 76.9%. On intercontinental routes the SLF was 81.9% (previous year: 80.6%). The SLF on European routes increased by 5.1 percentage points to 66.2%. Some 2.6 million passengers travelled with SWISS during the January-March period (previous year: 2.2 million).

March saw SWISS achieve a seat load factor of 80.3%, which was 2.4 percentage points higher than a year ago (77.9%). The SLF on intercontinental routes for the month stood at 84.9%, a slight increase over the 82.7% figure for the same month a year ago. On European routes, the SLF for March climbed by 2.9 percentage points to 70.7%. SWISS transported 989,066 passengers on scheduled services (previous year: 852,133). The number of flights operated also increased in March, by 4.8% in Europe and 8% in the intercontinental sector. In total, SWISS operated 11,004 flights in March, 5.2% more than a year ago. This increase is a direct reflection of the expansion of the SWISS fleet.

**Swiss WorldCargo** experienced a slight dip in trade in the first quarter. The volume-based freight load factor declined to 84.8% (previous year: 87.8%).

**Traffic Statistics January-December 2007**  
**LX Scheduled Services**



	Passengers Europe	Passengers Intercontinental	Passengers Total	SLF Europe	SLF Intercontinental	SLF Total
Jan	630'529	215'702	846'231	61.9%	81.6%	75.4%
Feb	623'897	190'471	814'368	65.7%	78.9%	74.7%
Mar	761'913	227'153	989'066	70.7%	84.9%	80.3%
Apr						
May						
Jun						
Jul						
Aug						
Sep						
Oct						
Nov						
Dec						

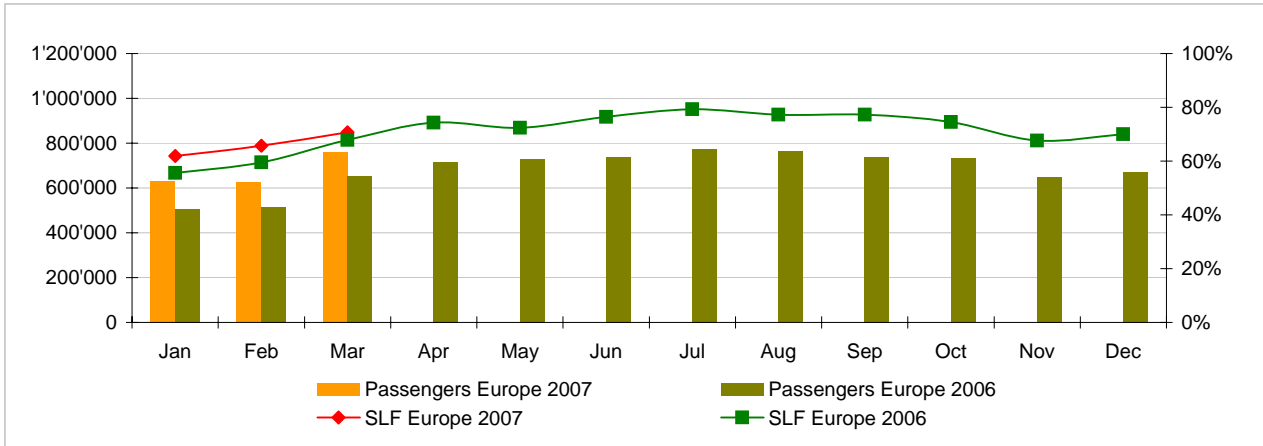
**Comparison Passengers and Seat Load Factor (SLF %) versus prior year**



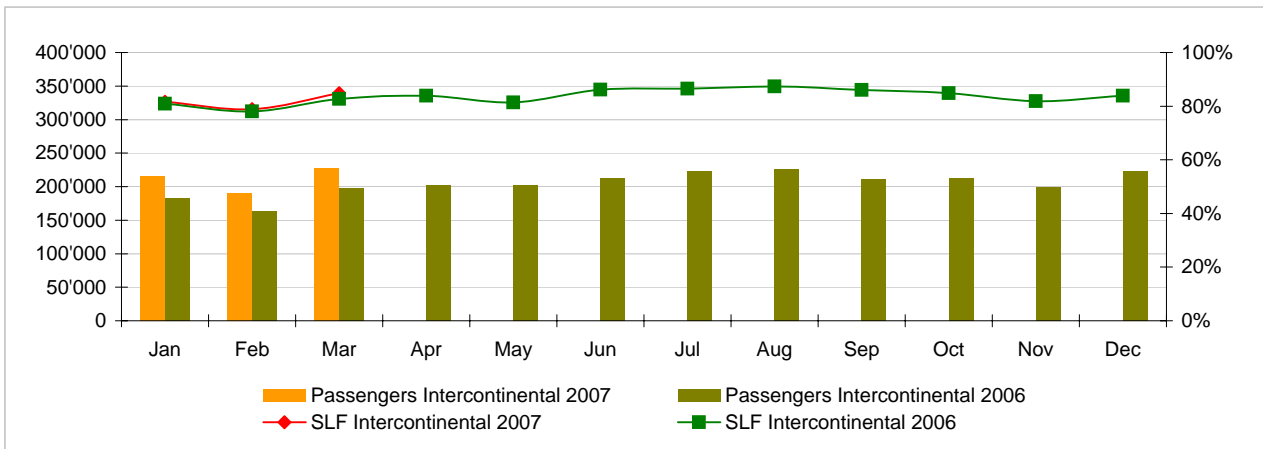
**Next update:**

- April 07 figures                      May 10, 2007
- May 07 figures                         June 12, 2007
- June 07 figures                         July 10, 2007

**Passengers and Seat Load Factor (SLF %) European Routes**  
Comparison versus prior year



**Passengers and Seat Load Factor (SLF %) Intercontinental Routes**  
Comparison versus prior year



## Traffic Statistics January 2007 LX Scheduled Services



	January			Cumulative		
	2007	2006		2007	2006	
<b>Number of Passengers <sup>1)</sup></b>						
Europe	630'529	506'345	24.5%	630'529	506'345	24.5%
Intercontinental	215'702	182'634	18.1%	215'702	182'634	18.1%
Total	846'231	688'979	22.8%	846'231	688'979	22.8%
<b>Flights</b>						
Europe	9'182	8'823	4.1%	9'182	8'823	4.1%
Intercontinental	1'503	1'358	10.7%	1'503	1'358	10.7%
Total	10'685	10'181	5.0%	10'685	10'181	5.0%
<b>Available Seat km (ASK, in mill)</b>						
Europe	790	691	14.2%	790	691	14.2%
Intercontinental	1'719	1'450	18.6%	1'719	1'450	18.6%
Total	2'509	2'141	17.2%	2'509	2'141	17.2%
<b>Revenue Passenger km (RPK, in mill)</b>						
Europe	489	384	27.4%	489	384	27.4%
Intercontinental	1'403	1'172	19.7%	1'403	1'172	19.7%
Total	1'892	1'556	21.6%	1'892	1'556	21.6%
<b>Seat Load Factor (SLF %) <sup>2)</sup></b>						
Europe	61.9%	55.5%	6.4%	61.9%	55.5%	6.4%
Intercontinental	81.6%	80.8%	0.8%	81.6%	80.8%	0.8%
Total	75.4%	72.7%	2.7%	75.4%	72.7%	2.7%
<b>Freight Load Factor (%) <sup>3)</sup></b>						
Total	78.9%	83.2%	-4.3%	78.9%	83.2%	-4.3%
<b>Freight Tonnes Kilometers (FTK, in 1000)</b>						
Total	84'516	87'467	-3.4%	84'516	87'467	-3.4%

<sup>1)</sup> Revenue Passengers

2006 figures restated due to adoption of new revenue passenger definition per international standards

<sup>2)</sup> SLF = RPK / ASK  
deviation in % pts

<sup>3)</sup> Including mail  
deviation in % pts

## Traffic Statistics February 2007 LX Scheduled Services



	February			Cumulative		
	2007	2006		2007	2006	
<b>Number of Passengers <sup>1)</sup></b>						
Europe	623'897	514'294	21.3%	1'254'426	1'020'639	22.9%
Intercontinental	190'471	163'785	16.3%	406'173	346'419	17.2%
Total	814'368	678'079	20.1%	1'660'599	1'367'058	21.5%
<b>Flights</b>						
Europe	8'564	8'134	5.3%	17'746	16'957	4.7%
Intercontinental	1'371	1'256	9.2%	2'874	2'614	9.9%
Total	9'935	9'390	5.8%	20'620	19'571	5.4%
<b>Available Seat km (ASK, in mill)</b>						
Europe	728	636	14.4%	1'518	1'328	14.3%
Intercontinental	1'577	1'343	17.5%	3'297	2'792	18.1%
Total	2'306	1'979	16.5%	4'814	4'120	16.8%
<b>Revenue Passenger km (RPK, in mill)</b>						
Europe	478	379	26.2%	967	763	26.8%
Intercontinental	1'244	1'048	18.7%	2'647	2'221	19.2%
Total	1'722	1'427	20.7%	3'615	2'983	21.2%
<b>Seat Load Factor (SLF %) <sup>2)</sup></b>						
Europe	65.7%	59.5%	6.2%	63.7%	57.5%	6.2%
Intercontinental	78.9%	78.1%	0.8%	80.3%	79.5%	0.8%
Total	74.7%	72.1%	2.6%	75.1%	72.4%	2.7%
<b>Freight Load Factor (%) <sup>3)</sup></b>						
Total	86.7%	90.4%	-3.7%	82.7%	86.7%	-4.0%
<b>Freight Tonnes Kilometers (FTK, in 1000)</b>						
Total	88'624	91'190	-2.8%	173'140	178'657	-3.1%

<sup>1)</sup> Revenue Passengers

2006 figures restated due to adoption of new revenue passenger definition per international standards

<sup>2)</sup> SLF = RPK / ASK  
deviation in % pts

<sup>3)</sup> Including mail  
deviation in % pts

## Traffic Statistics March 2007 LX Scheduled Services



Swiss  
International  
Air Lines

	March			Cumulative		
	2007	2006		2007	2006	
<b>Number of Passengers <sup>1)</sup></b>						
Europe	761'913	654'167	16.5%	2'016'339	1'674'806	20.4%
Intercontinental	227'153	197'966	14.7%	633'326	544'385	16.3%
Total	989'066	852'133	16.1%	2'649'665	2'219'191	19.4%
<b>Flights</b>						
Europe	9'477	9'047	4.8%	27'223	26'004	4.7%
Intercontinental	1'527	1'414	8.0%	4'401	4'028	9.3%
Total	11'004	10'461	5.2%	31'624	30'032	5.3%
<b>Available Seat km (ASK, in mill)</b>						
Europe	826	727	13.7%	2'344	2'054	14.1%
Intercontinental	1'752	1'539	13.8%	5'049	4'331	16.6%
Total	2'578	2'265	13.8%	7'393	6'386	15.8%
<b>Revenue Passenger km (RPK, in mill)</b>						
Europe	584	493	18.5%	1'552	1'256	23.6%
Intercontinental	1'487	1'273	16.8%	4'134	3'493	18.4%
Total	2'071	1'765	17.3%	5'686	4'749	19.7%
<b>Seat Load Factor (SLF %) <sup>2)</sup></b>						
Europe	70.7%	67.8%	2.9%	66.2%	61.1%	5.1%
Intercontinental	84.9%	82.7%	2.2%	81.9%	80.6%	1.3%
Total	80.3%	77.9%	2.4%	76.9%	74.4%	2.5%
<b>Estimate Freight Load Factor (%) <sup>3)</sup></b>						
Total	88.8%	89.7%	-0.9%	84.8%	87.8%	-3.0%
<b>Estimate Freight Tonnes Kilometers (FTK, in 1000)</b>						
Total	97'207	103'323	-5.9%	270'347	281'980	-4.1%

<sup>1)</sup> Revenue Passengers

2006 figures restated due to adoption of new revenue passenger definition per international standards

<sup>2)</sup> SLF = RPK / ASK

deviation in % pts

<sup>3)</sup> Including mail

deviation in % pts