

SWISS traffic figures

January 2007



SWISS increases flights and seat load factors in January, too

SWISS achieved a systemwide seat load factor of 75.4% for January 2007 (compared to 72.7% for the same month last year). Seat load factor on SWISS's intercontinental services stood at 81.6% (prior year: 80.8%), while seat load factor on the SWISS European network amounted to 61.9%, a rise of 6.4 percentage points. SWISS carried a total of 846 231 passengers in January, a 22.8% increase on the 688 979 passengers* of the same month last year. The total number of SWISS flights operated in the month was up 5% year-on-year.

January seat load factor for SWISS's *intercontinental services* stood at 81.6%, a 0.8-percentage-point improvement on the 80.8% of January 2006. Available-seat-kilometre (ASK) capacity was 18.6% up on its prior-year level, while revenue-passenger-kilometre (RPK) traffic volume for the period rose by 19.7%.

SWISS raised its January seat load factor on its *European services* by 6.4 percentage points, to 61.9%. With ASK capacity 14.2% higher than in January 2006, RPK traffic volume was increased by 27.4%.

As in previous months, SWISS operated more flights overall in January 2007 than it had in the same month of the prior year. The increase in flight numbers is connected with the fleet expansion which the company embarked on in November 2006, in response to significantly strong demand. The total number of flights operated was up 10.7% for intercontinental services and 4.1% on the European network.

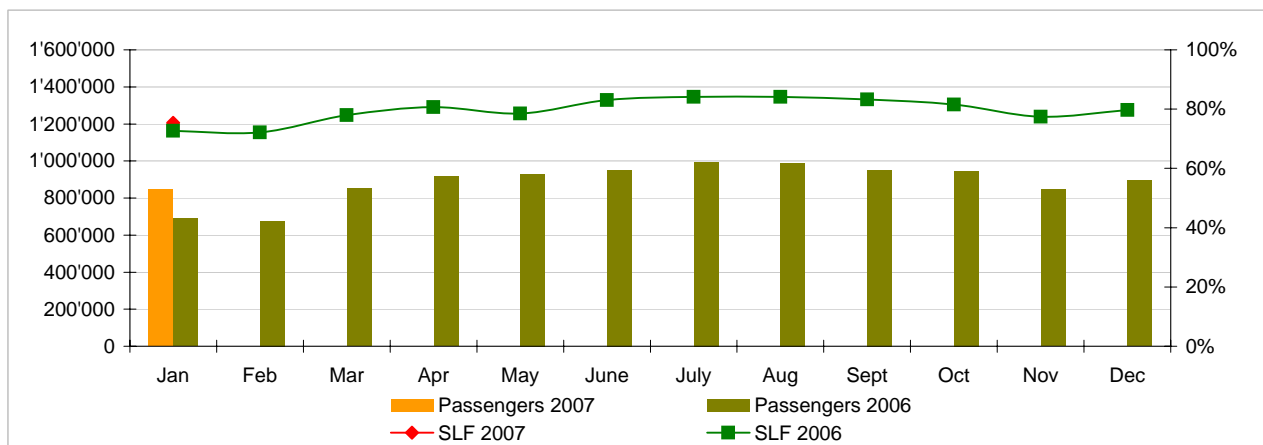
** A new internationally-recognised definition of fare-paying passengers was recently adopted. For comparison purposes, prior-year figures have been recalculated using the new definition.*

Traffic Statistics January-December 2007
LX Scheduled Services



	Passengers Europe	Passengers Intercontinental	Passengers Total	SLF Europe	SLF Intercontinental	SLF Total
Jan	630'529	215'702	846'231	61.9%	81.6%	75.4%
Feb						
Mar						
Apr						
May						
Jun						
Jul						
Aug						
Sep						
Oct						
Nov						
Dec						

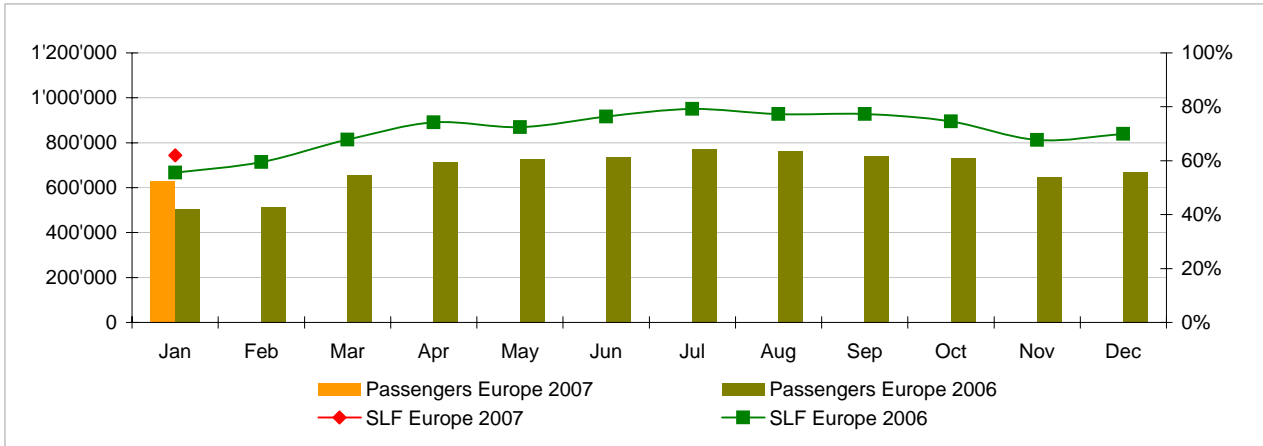
Comparison Passengers and Seat Load Factor (SLF %) versus prior year



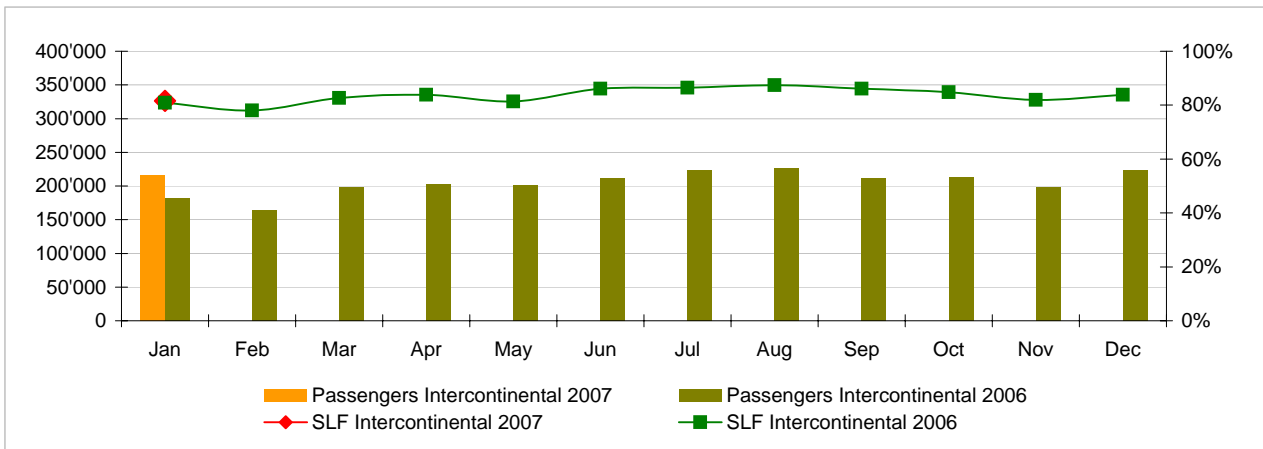
Next update:

- February 07 figures March 9, 2007
- March 07 figures April 12, 2007
- April 07 figures May 10, 2007

Passengers and Seat Load Factor (SLF %) European Routes
Comparison versus prior year



Passengers and Seat Load Factor (SLF %) Intercontinental Routes
Comparison versus prior year



Traffic Statistics January 2007 LX Scheduled Services



Swiss
International
Air Lines

	January			Cumulative		
	2007	2006		2007	2006	
Number of Passengers ¹⁾						
Europe	630'529	506'345	24.5%	630'529	506'345	24.5%
Intercontinental	215'702	182'634	18.1%	215'702	182'634	18.1%
Total	846'231	688'979	22.8%	846'231	688'979	22.8%
Flights						
Europe	9'182	8'823	4.1%	9'182	8'823	4.1%
Intercontinental	1'503	1'358	10.7%	1'503	1'358	10.7%
Total	10'685	10'181	5.0%	10'685	10'181	5.0%
Available Seat km (ASK, in mill)						
Europe	790	691	14.2%	790	691	14.2%
Intercontinental	1'719	1'450	18.6%	1'719	1'450	18.6%
Total	2'509	2'141	17.2%	2'509	2'141	17.2%
Revenue Passenger km (RPK, in mill)						
Europe	489	384	27.4%	489	384	27.4%
Intercontinental	1'403	1'172	19.7%	1'403	1'172	19.7%
Total	1'892	1'556	21.6%	1'892	1'556	21.6%
Seat Load Factor (SLF %) ²⁾						
Europe	61.9%	55.5%	6.4%	61.9%	55.5%	6.4%
Intercontinental	81.6%	80.8%	0.8%	81.6%	80.8%	0.8%
Total	75.4%	72.7%	2.7%	75.4%	72.7%	2.7%
Estimate Freight Load Factor (%) ³⁾						
Total	78.3%	83.2%	-4.9%	78.3%	83.2%	-4.9%
Estimate Freight Tonnes Kilometers (FTK, in 1000)						
Total	83'466	87'467	-4.6%	83'466	87'467	-4.6%

¹⁾ Revenue Passengers

2006 figures restated due to adoption of new revenue passenger definition per international standards

²⁾ SLF = RPK / ASK

deviation in % pts

³⁾ Including mail

deviation in % pts