

SWISS traffic figures

February 2007



SWISS raises February capacity and posts slightly higher seat load factor

SWISS achieved a systemwide seat load factor for February 2007 of 74.7%, a 2.6-percentage-point improvement on the 72.1% of the prior-year period. SWISS's intercontinental services recorded a seat load factor for February of 78.9%, a slight improvement on the 78.1% of the same month last year. The seat load factor on the SWISS European network amounted to 65.7%, a year-on-year increase of 6.2 percentage points. SWISS carried 814 368 passengers on its scheduled services in February 2007.

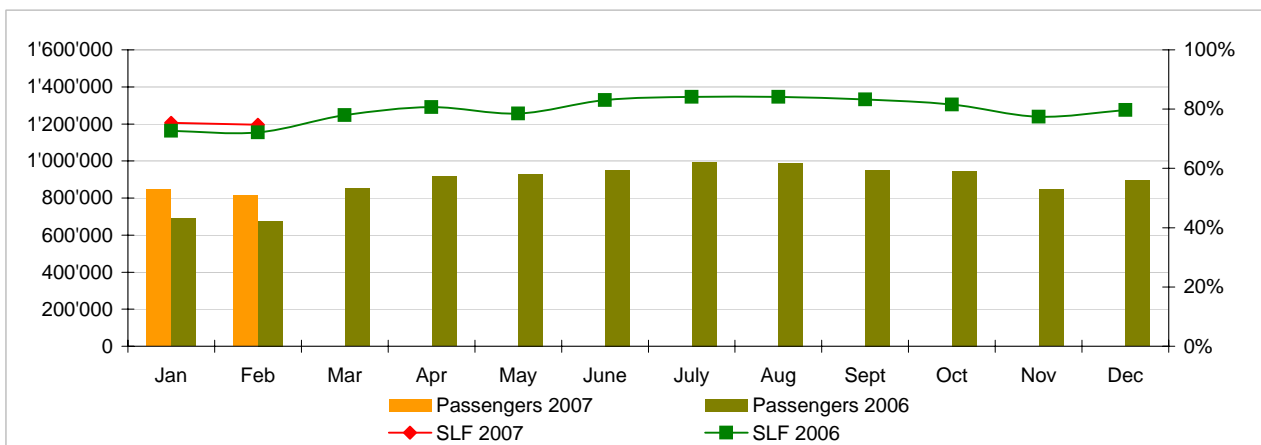
As in previous months, SWISS operated more flights in February 2007 than it had in the prior-year period. The total number of flights was up 5.3% on the SWISS European network and up 9.2% on intercontinental routes. SWISS operated 9 935 flights systemwide in February 2007, an overall increase of 5.8%.

Traffic Statistics January-December 2007
LX Scheduled Services



	Passengers Europe	Passengers Intercontinental	Passengers Total	SLF Europe	SLF Intercontinental	SLF Total
Jan	630'529	215'702	846'231	61.9%	81.6%	75.4%
Feb	623'897	190'471	814'368	65.7%	78.9%	74.7%
Mar						
Apr						
May						
Jun						
Jul						
Aug						
Sep						
Oct						
Nov						
Dec						

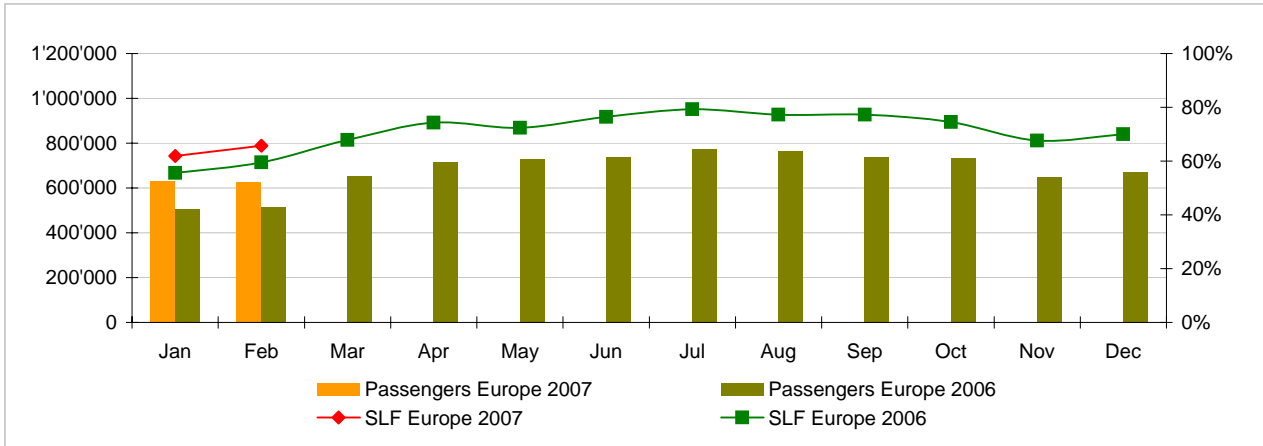
Comparison Passengers and Seat Load Factor (SLF %) versus prior year



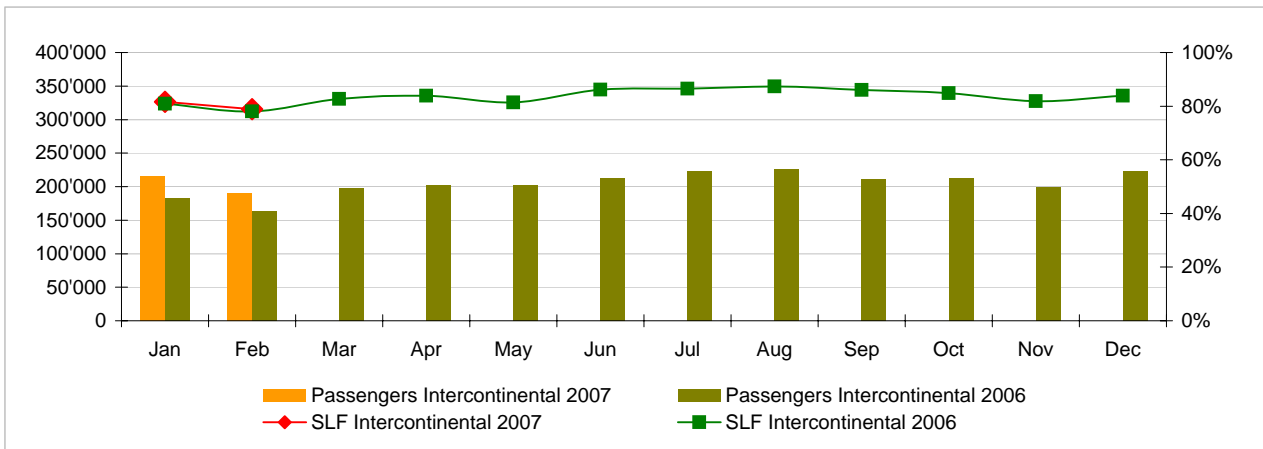
Next update:

- March 07 figures April 12, 2007
- April 07 figures May 10, 2007
- May 07 figures June 12, 2007

Passengers and Seat Load Factor (SLF %) European Routes
Comparison versus prior year



Passengers and Seat Load Factor (SLF %) Intercontinental Routes
Comparison versus prior year



Traffic Statistics January 2007 LX Scheduled Services



	January			Cumulative		
	2007	2006		2007	2006	
Number of Passengers ¹⁾						
Europe	630'529	506'345	24.5%	630'529	506'345	24.5%
Intercontinental	215'702	182'634	18.1%	215'702	182'634	18.1%
Total	846'231	688'979	22.8%	846'231	688'979	22.8%
Flights						
Europe	9'182	8'823	4.1%	9'182	8'823	4.1%
Intercontinental	1'503	1'358	10.7%	1'503	1'358	10.7%
Total	10'685	10'181	5.0%	10'685	10'181	5.0%
Available Seat km (ASK, in mill)						
Europe	790	691	14.2%	790	691	14.2%
Intercontinental	1'719	1'450	18.6%	1'719	1'450	18.6%
Total	2'509	2'141	17.2%	2'509	2'141	17.2%
Revenue Passenger km (RPK, in mill)						
Europe	489	384	27.4%	489	384	27.4%
Intercontinental	1'403	1'172	19.7%	1'403	1'172	19.7%
Total	1'892	1'556	21.6%	1'892	1'556	21.6%
Seat Load Factor (SLF %) ²⁾						
Europe	61.9%	55.5%	6.4%	61.9%	55.5%	6.4%
Intercontinental	81.6%	80.8%	0.8%	81.6%	80.8%	0.8%
Total	75.4%	72.7%	2.7%	75.4%	72.7%	2.7%
Freight Load Factor (%) ³⁾						
Total	78.9%	83.2%	-4.3%	78.9%	83.2%	-4.3%
Freight Tonnes Kilometers (FTK, in 1000)						
Total	84'516	87'467	-3.4%	84'516	87'467	-3.4%

¹⁾ Revenue Passengers

2006 figures restated due to adoption of new revenue passenger definition per international standards

²⁾ SLF = RPK / ASK
deviation in % pts

³⁾ Including mail
deviation in % pts

Traffic Statistics February 2007 LX Scheduled Services



	February			Cumulative		
	2007	2006		2007	2006	
Number of Passengers ¹⁾						
Europe	623'897	514'294	21.3%	1'254'426	1'020'639	22.9%
Intercontinental	190'471	163'785	16.3%	406'173	346'419	17.2%
Total	814'368	678'079	20.1%	1'660'599	1'367'058	21.5%
Flights						
Europe	8'564	8'134	5.3%	17'746	16'957	4.7%
Intercontinental	1'371	1'256	9.2%	2'874	2'614	9.9%
Total	9'935	9'390	5.8%	20'620	19'571	5.4%
Available Seat km (ASK, in mill)						
Europe	728	636	14.4%	1'518	1'328	14.3%
Intercontinental	1'577	1'343	17.5%	3'297	2'792	18.1%
Total	2'306	1'979	16.5%	4'814	4'120	16.8%
Revenue Passenger km (RPK, in mill)						
Europe	478	379	26.2%	967	763	26.8%
Intercontinental	1'244	1'048	18.7%	2'647	2'221	19.2%
Total	1'722	1'427	20.7%	3'615	2'983	21.2%
Seat Load Factor (SLF %) ²⁾						
Europe	65.7%	59.5%	6.2%	63.7%	57.5%	6.2%
Intercontinental	78.9%	78.1%	0.8%	80.3%	79.5%	0.8%
Total	74.7%	72.1%	2.6%	75.1%	72.4%	2.7%
Estimate Freight Load Factor (%) ³⁾						
Total	86.5%	90.4%	-3.9%	82.7%	86.7%	-4.0%
Estimate Freight Tonnes Kilometers (FTK, in 1000)						
Total	88'484	91'190	-3.0%	173'000	178'657	-3.2%

¹⁾ Revenue Passengers

2006 figures restated due to adoption of new revenue passenger definition per international standards

²⁾ SLF = RPK / ASK
deviation in % pts

³⁾ Including mail
deviation in % pts