

# SWISS traffic figures

February 2008



## SWISS in February: high load factors maintained and more passengers carried

SWISS offered 13.1% more available-seat-kilometre capacity in February 2008 than it had for the same month a year ago. Systemwide seat load factor for the month stood at 74.8%, virtually unchanged from the 74.7% of February 2007.

February seat load factor on SWISS's European network was raised 1.1 percentage points from the 65.7% of the prior year to 66.8%. On intercontinental services, seat load factor for the month sustained a 0.4-percentage-point decline, from 78.9% to 78.5%. SWISS carried a total of 938 174 passengers on its scheduled services in February 2008, a 13.8% increase on the 824 564 of the prior-year period.

SWISS operated 4.6% more European flights and 11.7% more intercontinental services in February 2008 than it had in the prior-year period. All in all, the carrier performed 10 155 scheduled flights in the month, compared to 9 634 in February 2007.

The airfreight business of **Swiss WorldCargo** recorded a cargo load factor (by volume) of 87.5% for February, up 0.8 percentage points on the 86.7% of February 2007.

**Traffic Statistics January-December 2008**  
**LX Scheduled Services**

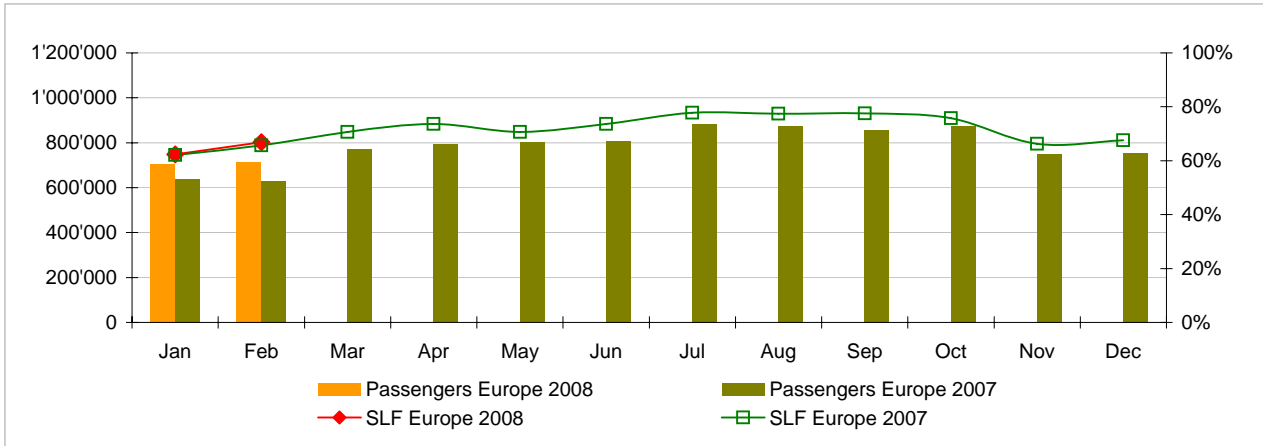


	Passengers Europe	Passengers Intercontinental	Passengers Total	SLF Europe	SLF Intercontinental	SLF Total
Jan	706'543	235'513	942'056	62.4%	79.7%	74.3%
Feb	716'148	222'026	938'174	66.8%	78.5%	74.8%
Mar						
Apr						
May						
Jun						
Jul						
Aug						
Sep						
Oct						
Nov						
Dec						

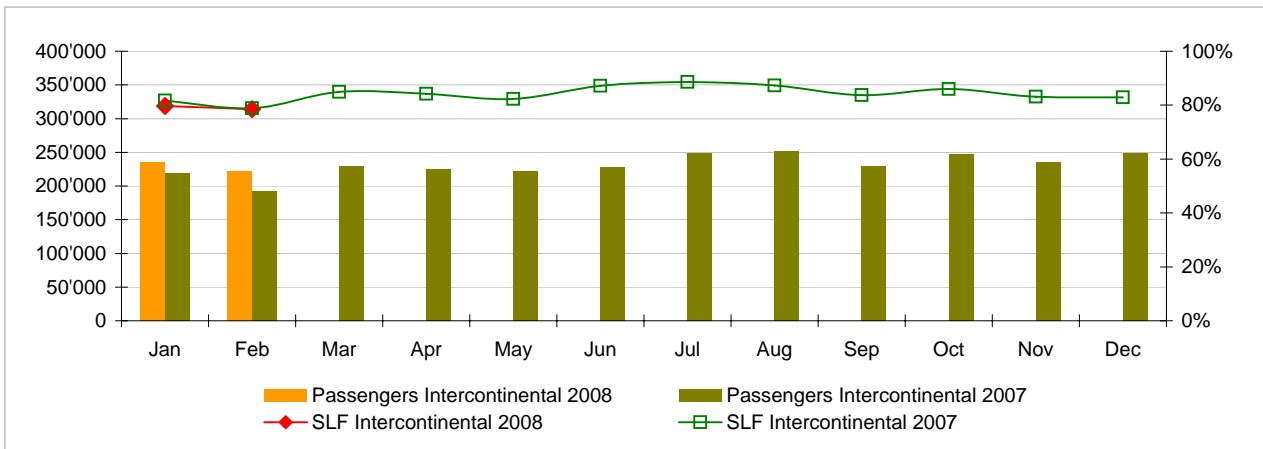
**Comparison Passengers and Seat Load Factor (SLF %) versus prior year**



**Passengers and Seat Load Factor (SLF %) European Routes**  
Comparison versus prior year



**Passengers and Seat Load Factor (SLF %) Intercontinental Routes**  
Comparison versus prior year



## Traffic Statistics January 2008 LX Scheduled Services



Swiss  
International  
Air Lines

	January			Cumulative		
	2008	2007		2008	2007	
<b>Number of Passengers <sup>1)</sup></b>						
Europe	706'543	639'682	10.5%	706'543	639'682	10.5%
Intercontinental	235'513	218'491	7.8%	235'513	218'491	7.8%
Total	942'056	858'173	9.8%	942'056	858'173	9.8%
<b>Flights <sup>2)</sup></b>						
Europe	9'530	9'116	4.5%	9'530	9'116	4.5%
Intercontinental	1'345	1'232	9.2%	1'345	1'232	9.2%
Total	10'875	10'348	5.1%	10'875	10'348	5.1%
<b>Available Seat km (ASK, in millions)</b>						
Europe	867	785	10.4%	867	785	10.4%
Intercontinental	1'913	1'718	11.4%	1'913	1'718	11.4%
Total	2'780	2'503	11.0%	2'780	2'503	11.0%
<b>Revenue Passenger km (RPK, in millions)</b>						
Europe	541	488	10.8%	541	488	10.8%
Intercontinental	1'524	1'403	8.7%	1'524	1'403	8.7%
Total	2'065	1'891	9.2%	2'065	1'891	9.2%
<b>Seat Load Factor (SLF %) <sup>3)</sup></b>						
Europe	62.4%	62.1%	0.3%	62.4%	62.1%	0.3%
Intercontinental	79.7%	81.7%	-2.0%	79.7%	81.7%	-2.0%
Total	74.3%	75.5%	-1.2%	74.3%	75.5%	-1.2%
<b>Freight Load Factor (%) <sup>4)</sup></b>						
Total	79.8%	78.9%	0.9%	79.8%	78.9%	0.9%
<b>Freight Tonnes Kilometers (FTK, in 1000)</b>						
Total	97'966	85'928	14.0%	97'966	85'928	14.0%

<sup>1)</sup> All passengers; in accordance with Lufthansa, SWISS publishes the number of all passengers instead of revenue passengers.

<sup>2)</sup> A flight includes all flight legs which are operated under one single flight number; intermediate stops are not considered.

<sup>3)</sup> SLF = RPK / ASK  
deviation in % pts

<sup>4)</sup> Including mail  
deviation in % pts

## Traffic Statistics February 2008 LX Scheduled Services



	February			Cumulative		
	2008	2007		2008	2007	
<b>Number of Passengers <sup>1)</sup></b>						
Europe	716'148	631'571	13.4%	1'422'691	1'271'253	11.9%
Intercontinental	222'026	192'993	15.0%	457'539	411'484	11.2%
Total	938'174	824'564	13.8%	1'880'230	1'682'737	11.7%
<b>Flights <sup>2)</sup></b>						
Europe	8'897	8'508	4.6%	18'427	17'624	4.6%
Intercontinental	1'258	1'126	11.7%	2'603	2'358	10.4%
Total	10'155	9'634	5.4%	21'030	19'982	5.2%
<b>Available Seat km (ASK, in millions)</b>						
Europe	810	728	11.3%	1'677	1'513	10.8%
Intercontinental	1'797	1'577	13.9%	3'710	3'296	12.6%
Total	2'608	2'306	13.1%	5'388	4'809	12.0%
<b>Revenue Passenger km (RPK, in millions)</b>						
Europe	541	478	13.2%	1'082	966	12.0%
Intercontinental	1'410	1'244	13.3%	2'935	2'647	10.9%
Total	1'952	1'722	13.3%	4'017	3'613	11.2%
<b>Seat Load Factor (SLF %) <sup>3)</sup></b>						
Europe	66.8%	65.7%	1.1%	64.5%	63.8%	0.7%
Intercontinental	78.5%	78.9%	-0.4%	79.1%	80.3%	-1.2%
Total	74.8%	74.7%	0.1%	74.6%	75.1%	-0.5%
<b>Estimated Freight Load Factor (%) <sup>4)</sup></b>						
Total	87.5%	86.7%	0.8%	83.6%	82.7%	0.9%
<b>Estimated Freight Tonnes Kilometers (FTK, in 1000)</b>						
Total	72'890	89'584	-18.6%	170'857	175'512	-2.7%

<sup>1)</sup> All passengers; in accordance with Lufthansa, SWISS publishes the number of all passengers instead of revenue passengers.

<sup>2)</sup> A flight includes now all flight legs which are operated under one single flight number; intermediate stops are not considered.

<sup>3)</sup> SLF = RPK / ASK  
deviation in % pts

<sup>4)</sup> Including mail  
deviation in % pts