

SWISS traffic figures

April 2008



SWISS maintains April seat load factor at prior-year level

SWISS broadly maintained its systemwide seat load factor for April at its prior year-level: the 81.1% recorded for the month was a slight improvement on the 80.7% of the same month last year, despite a 9.9% increase in capacity in available seat-kilometre terms. April seat load factor for intercontinental services rose 0.6 percentage points, from 84.2% to 84.8%, while April seat load factor for SWISS's European network was virtually unchanged at 73.7% (April 2007: 73.6%). SWISS carried 1 134 973 passengers on its scheduled services in April 2008, an 11.7% increase on the 1 016 412 of the same month last year.

SWISS operated 11 095 flights systemwide last month, compared to 10 302 for April 2007. The number of flights operated in Europe was a 7.8% increase year-on-year, while the number of intercontinental services was raised 7.1%.

The airfreight business of **Swiss WorldCargo** achieved a cargo load factor (by volume) for April of 84.4% – a 0.8-percentage-point improvement on the 83.6% of the prior-year period.

Traffic Statistics January-December 2008
LX Scheduled Services

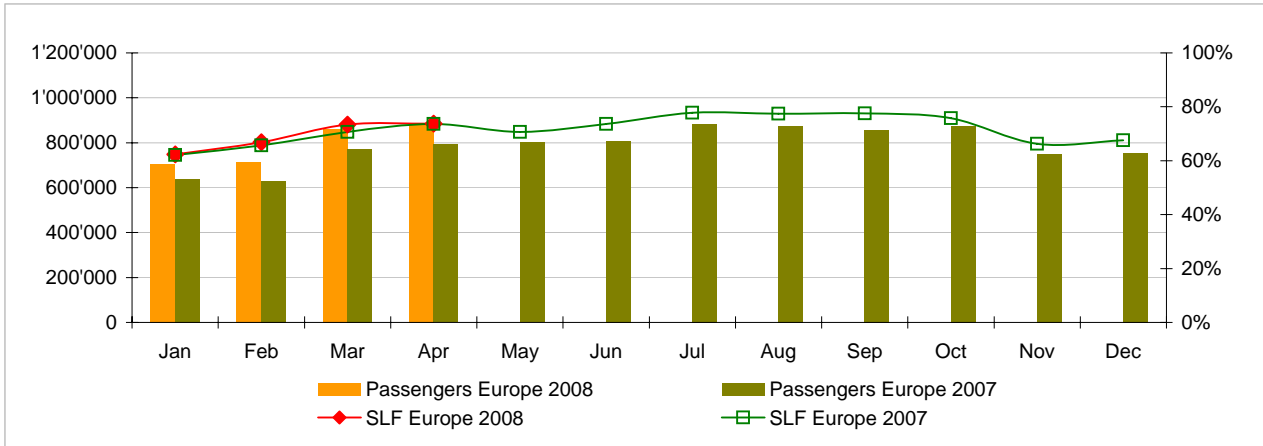


	Passengers Europe	Passengers Intercontinental	Passengers Total	SLF Europe	SLF Intercontinental	SLF Total
Jan	706'543	235'513	942'056	62.4%	79.7%	74.3%
Feb	716'148	222'026	938'174	66.8%	78.5%	74.8%
Mar	858'888	260'399	1'119'287	73.4%	84.7%	81.1%
Apr	884'642	250'331	1'134'973	73.7%	84.8%	81.1%
May						
Jun						
Jul						
Aug						
Sep						
Oct						
Nov						
Dec						

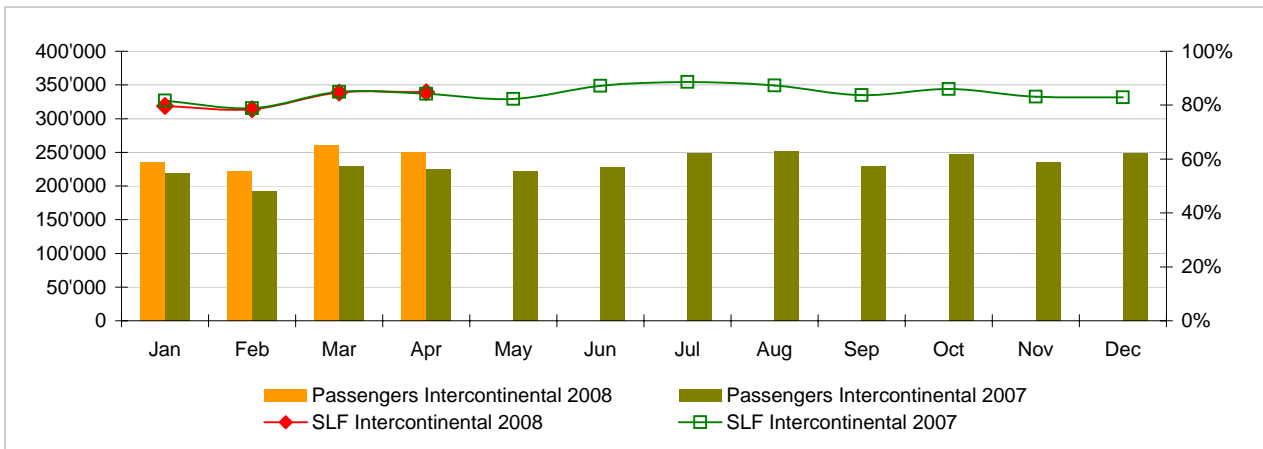
Comparison Passengers and Seat Load Factor (SLF %) versus prior year



Passengers and Seat Load Factor (SLF %) European Routes
Comparison versus prior year



Passengers and Seat Load Factor (SLF %) Intercontinental Routes
Comparison versus prior year



Traffic Statistics January 2008 LX Scheduled Services



	January			Cumulative		
	2008	2007		2008	2007	
Number of Passengers ¹⁾						
Europe	706'543	639'682	10.5%	706'543	639'682	10.5%
Intercontinental	235'513	218'491	7.8%	235'513	218'491	7.8%
Total	942'056	858'173	9.8%	942'056	858'173	9.8%
Flights ²⁾						
Europe	9'530	9'116	4.5%	9'530	9'116	4.5%
Intercontinental	1'345	1'232	9.2%	1'345	1'232	9.2%
Total	10'875	10'348	5.1%	10'875	10'348	5.1%
Available Seat km (ASK, in millions)						
Europe	867	785	10.4%	867	785	10.4%
Intercontinental	1'913	1'718	11.4%	1'913	1'718	11.4%
Total	2'780	2'503	11.0%	2'780	2'503	11.0%
Revenue Passenger km (RPK, in millions)						
Europe	541	488	10.8%	541	488	10.8%
Intercontinental	1'524	1'403	8.7%	1'524	1'403	8.7%
Total	2'065	1'891	9.2%	2'065	1'891	9.2%
Seat Load Factor (SLF %) ³⁾						
Europe	62.4%	62.1%	0.3%	62.4%	62.1%	0.3%
Intercontinental	79.7%	81.7%	-2.0%	79.7%	81.7%	-2.0%
Total	74.3%	75.5%	-1.2%	74.3%	75.5%	-1.2%
Freight Load Factor (%) ⁴⁾						
Total	79.8%	78.9%	0.9%	79.8%	78.9%	0.9%
Freight Tonnes Kilometers (FTK, in 1000)						
Total	97'966	85'928	14.0%	97'966	85'928	14.0%

¹⁾ All passengers; in accordance with Lufthansa, SWISS publishes the number of all passengers instead of revenue passengers.

²⁾ A flight includes all flight legs which are operated under one single flight number; intermediate stops are not considered.

³⁾ SLF = RPK / ASK
deviation in % pts

⁴⁾ Including mail
deviation in % pts

Traffic Statistics February 2008 LX Scheduled Services



Swiss
International
Air Lines

	February			Cumulative		
	2008	2007		2008	2007	
Number of Passengers ¹⁾						
Europe	716'148	631'571	13.4%	1'422'691	1'271'253	11.9%
Intercontinental	222'026	192'993	15.0%	457'539	411'484	11.2%
Total	938'174	824'564	13.8%	1'880'230	1'682'737	11.7%
Flights ²⁾						
Europe	8'897	8'508	4.6%	18'427	17'624	4.6%
Intercontinental	1'258	1'126	11.7%	2'603	2'358	10.4%
Total	10'155	9'634	5.4%	21'030	19'982	5.2%
Available Seat km (ASK, in millions)						
Europe	810	728	11.3%	1'677	1'513	10.8%
Intercontinental	1'797	1'577	13.9%	3'710	3'296	12.6%
Total	2'608	2'306	13.1%	5'388	4'809	12.0%
Revenue Passenger km (RPK, in millions)						
Europe	541	478	13.2%	1'082	966	12.0%
Intercontinental	1'410	1'244	13.3%	2'935	2'647	10.9%
Total	1'952	1'722	13.3%	4'017	3'613	11.2%
Seat Load Factor (SLF %) ³⁾						
Europe	66.8%	65.7%	1.1%	64.5%	63.8%	0.7%
Intercontinental	78.5%	78.9%	-0.4%	79.1%	80.3%	-1.2%
Total	74.8%	74.7%	0.1%	74.6%	75.1%	-0.5%
Freight Load Factor (%) ⁴⁾						
Total	87.5%	86.7%	0.8%	83.6%	82.7%	0.9%
Freight Tonnes Kilometers (FTK, in 1000)						
Total	104'388	89'584	16.5%	202'355	175'512	15.3%

¹⁾ All passengers; in accordance with Lufthansa, SWISS publishes the number of all passengers instead of revenue passengers.

²⁾ A flight includes now all flight legs which are operated under one single flight number; intermediate stops are not considered.

³⁾ SLF = RPK / ASK
deviation in % pts

⁴⁾ Including mail
deviation in % pts

Traffic Statistics March 2008 LX Scheduled Services



Swiss
International
Air Lines

	March			Cumulative		
	2008	2007		2008	2007	
Number of Passengers ¹⁾						
Europe	858'888	770'639	11.5%	2'281'579	2'041'892	11.7%
Intercontinental	260'399	229'426	13.5%	717'938	640'910	12.0%
Total	1'119'287	1'000'065	11.9%	2'999'517	2'682'802	11.8%
Flights ²⁾						
Europe	9'551	9'411	1.5%	27'978	27'035	3.5%
Intercontinental	1'362	1'246	9.3%	3'965	3'604	10.0%
Total	10'913	10'657	2.4%	31'943	30'639	4.3%
Available Seat km (ASK, in millions)						
Europe	894	826	8.2%	2'571	2'340	9.9%
Intercontinental	1'941	1'752	10.8%	5'652	5'048	12.0%
Total	2'835	2'578	10.0%	8'223	7'387	11.3%
Revenue Passenger km (RPK, in millions)						
Europe	656	584	12.3%	1'738	1'550	12.1%
Intercontinental	1'644	1'487	10.5%	4'578	4'134	10.7%
Total	2'300	2'071	11.0%	6'316	5'684	11.1%
Seat Load Factor (SLF %) ³⁾						
Europe	73.4%	70.7%	2.7%	67.6%	66.3%	1.3%
Intercontinental	84.7%	84.9%	-0.2%	81.0%	81.9%	-0.9%
Total	81.1%	80.3%	0.8%	76.8%	76.9%	-0.1%
Freight Load Factor (%) ⁴⁾						
Total	88.1%	89.3%	-1.2%	85.2%	85.0%	0.2%
Freight Tonnes Kilometers (FTK, in 1000)						
Total	113'799	101'459	12.2%	316'153	276'972	14.1%

¹⁾ All passengers; in accordance with Lufthansa, SWISS publishes the number of all passengers instead of revenue passengers.

²⁾ A flight includes all flight legs which are operated under one single flight number; intermediate stops are not considered.

³⁾ SLF = RPK / ASK
deviation in % pts

⁴⁾ Including mail
deviation in % pts

Traffic Statistics April 2008 LX Scheduled Services



	April			Cumulative		
	2008	2007		2008	2007	
Number of Passengers ¹⁾						
Europe	884'642	792'230	11.7%	3'166'221	2'834'122	11.7%
Intercontinental	250'331	224'182	11.7%	968'269	865'092	11.9%
Total	1'134'973	1'016'412	11.7%	4'134'490	3'699'214	11.8%
Flights ²⁾						
Europe	9'796	9'089	7.8%	37'774	36'124	4.6%
Intercontinental	1'299	1'213	7.1%	5'264	4'817	9.3%
Total	11'095	10'302	7.7%	43'038	40'941	5.1%
Available Seat km (ASK, in millions)						
Europe	925	833	11.1%	3'496	3'173	10.2%
Intercontinental	1'861	1'702	9.4%	7'513	6'750	11.3%
Total	2'787	2'535	9.9%	11'009	9'923	11.0%
Revenue Passenger km (RPK, in millions)						
Europe	682	613	11.3%	2'420	2'164	11.9%
Intercontinental	1'579	1'433	10.1%	6'157	5'567	10.6%
Total	2'261	2'047	10.5%	8'577	7'731	10.9%
Seat Load Factor (SLF %) ³⁾						
Europe	73.7%	73.6%	0.1%	69.2%	68.2%	1.0%
Intercontinental	84.8%	84.2%	0.6%	81.9%	82.5%	-0.6%
Total	81.1%	80.7%	0.4%	77.9%	77.9%	
Estimated Freight Load Factor (%) ⁴⁾						
Total	84.4%	83.6%	0.8%	85.0%	84.6%	0.4%
Estimated Freight Tonnes Kilometers (FTK, in 1000)						
Total	109'592	91'903	19.2%	425'746	368'874	15.4%

¹⁾ All passengers; in accordance with Lufthansa, SWISS publishes the number of all passengers instead of revenue passengers.

²⁾ A flight includes all flight legs which are operated under one single flight number; intermediate stops are not considered.

³⁾ SLF = RPK / ASK
deviation in % pts

⁴⁾ Including mail
deviation in % pts