

# SWISS traffic figures

October 2008



## SWISS continues to maintain high seat load factors

A total of 1 198 189 passengers travelled on SWISS in October 2008 – 6.9% more than the 1 120 838 of the same month last year.

Systemwide seat load factor amounted to 82%, which compares to 82.7% for October 2007. While intercontinental seat load factor for the month rose 0.1 percentage points from 86.0% to 86.1%, seat load factor for SWISS's European services declined 2.4 percentage points from 75.8% to 73.4%.

SWISS operated 11 604 flights systemwide in October 2008, a 6.8% increase on the 10 862 of the prior-year period. European flights for the month were up 6.5%, while intercontinental services saw a 9.2% increase. Total capacity was raised 11.9% in available-seat-kilometre terms.

The airfreight business of **Swiss WorldCargo** recorded a cargo load factor (by volume) of 85.2% for October 2008. The result was an 0.8-percentage-point decline on the prior-year period.

**Traffic Statistics January-December 2008**  
**LX Scheduled Services**

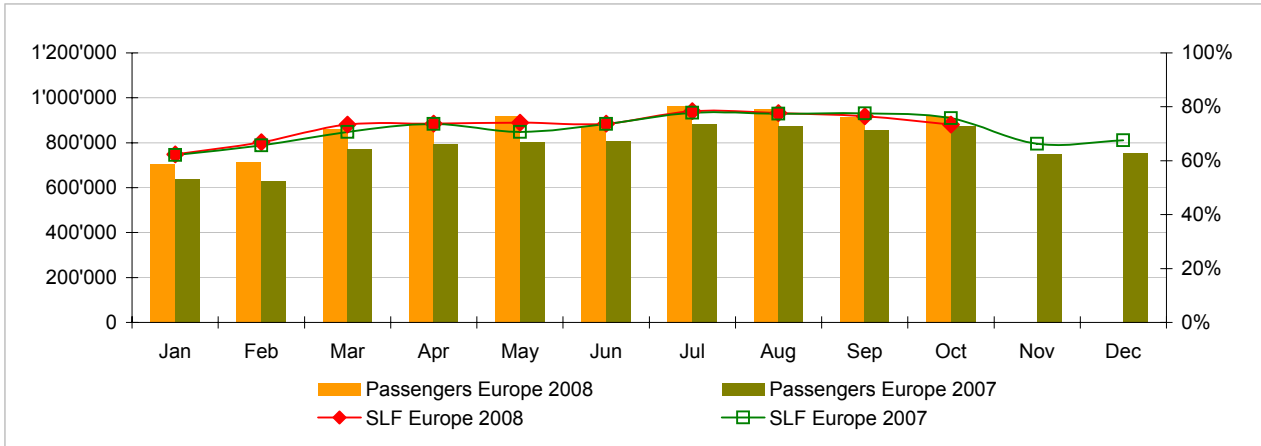


	Passengers Europe	Passengers Intercontinental	Passengers Total	SLF Europe	SLF Intercontinental	SLF Total
Jan	706'543	235'513	942'056	62.4%	79.7%	74.3%
Feb	716'148	222'026	938'174	66.8%	78.5%	74.8%
Mar	858'888	260'399	1'119'287	73.4%	84.7%	81.1%
Apr	884'642	250'331	1'134'973	73.7%	84.8%	81.1%
May	917'866	259'747	1'177'613	74.1%	81.8%	79.3%
Jun	875'232	261'270	1'136'502	73.7%	85.2%	81.5%
Jul	964'809	292'628	1'257'437	78.4%	89.7%	86.1%
Aug	948'540	295'104	1'243'644	77.6%	89.5%	85.7%
Sep	915'799	262'563	1'178'362	76.5%	85.7%	82.8%
Oct	919'924	278'265	1'198'189	73.4%	86.1%	82.0%
Nov						
Dec						

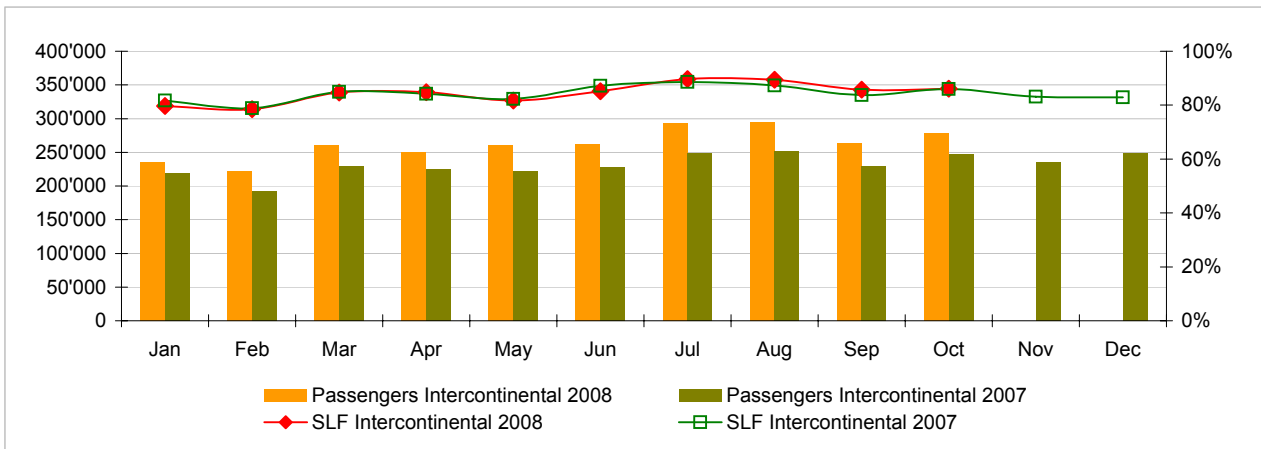
**Comparison Passengers and Seat Load Factor (SLF %) versus prior year**



**Passengers and Seat Load Factor (SLF %) European Routes**  
Comparison versus prior year



**Passengers and Seat Load Factor (SLF %) Intercontinental Routes**  
Comparison versus prior year



## Traffic Statistics January 2008 LX Scheduled Services



Swiss  
International  
Air Lines

	January			Cumulative		
	2008	2007		2008	2007	
<b>Number of Passengers <sup>1)</sup></b>						
Europe	706'543	639'682	10.5%	706'543	639'682	10.5%
Intercontinental	235'513	218'491	7.8%	235'513	218'491	7.8%
Total	942'056	858'173	9.8%	942'056	858'173	9.8%
<b>Flights <sup>2)</sup></b>						
Europe	9'530	9'116	4.5%	9'530	9'116	4.5%
Intercontinental	1'345	1'232	9.2%	1'345	1'232	9.2%
Total	10'875	10'348	5.1%	10'875	10'348	5.1%
<b>Available Seat km (ASK, in millions)</b>						
Europe	867	785	10.4%	867	785	10.4%
Intercontinental	1'913	1'718	11.4%	1'913	1'718	11.4%
Total	2'780	2'503	11.0%	2'780	2'503	11.0%
<b>Revenue Passenger km (RPK, in millions)</b>						
Europe	541	488	10.8%	541	488	10.8%
Intercontinental	1'524	1'403	8.7%	1'524	1'403	8.7%
Total	2'065	1'891	9.2%	2'065	1'891	9.2%
<b>Seat Load Factor (SLF %) <sup>3)</sup></b>						
Europe	62.4%	62.1%	0.3%	62.4%	62.1%	0.3%
Intercontinental	79.7%	81.7%	-2.0%	79.7%	81.7%	-2.0%
Total	74.3%	75.5%	-1.2%	74.3%	75.5%	-1.2%
<b>Freight Load Factor (%) <sup>4)</sup></b>						
Total	79.8%	78.9%	0.9%	79.8%	78.9%	0.9%
<b>Freight Tonnes Kilometers (FTK, in 1000)</b>						
Total	97'966	85'928	14.0%	97'966	85'928	14.0%

<sup>1)</sup> All passengers; in accordance with Lufthansa, SWISS publishes the number of all passengers instead of revenue passengers.

<sup>2)</sup> A flight includes all flight legs which are operated under one single flight number; intermediate stops are not considered.

<sup>3)</sup> SLF = RPK / ASK  
deviation in % pts

<sup>4)</sup> Including mail  
deviation in % pts

## Traffic Statistics February 2008 LX Scheduled Services



Swiss  
International  
Air Lines

	February			Cumulative		
	2008	2007		2008	2007	
<b>Number of Passengers <sup>1)</sup></b>						
Europe	716'148	631'571	13.4%	1'422'691	1'271'253	11.9%
Intercontinental	222'026	192'993	15.0%	457'539	411'484	11.2%
Total	938'174	824'564	13.8%	1'880'230	1'682'737	11.7%
<b>Flights <sup>2)</sup></b>						
Europe	8'897	8'508	4.6%	18'427	17'624	4.6%
Intercontinental	1'258	1'126	11.7%	2'603	2'358	10.4%
Total	10'155	9'634	5.4%	21'030	19'982	5.2%
<b>Available Seat km (ASK, in millions)</b>						
Europe	810	728	11.3%	1'677	1'513	10.8%
Intercontinental	1'797	1'577	13.9%	3'710	3'296	12.6%
Total	2'608	2'306	13.1%	5'388	4'809	12.0%
<b>Revenue Passenger km (RPK, in millions)</b>						
Europe	541	478	13.2%	1'082	966	12.0%
Intercontinental	1'410	1'244	13.3%	2'935	2'647	10.9%
Total	1'952	1'722	13.3%	4'017	3'613	11.2%
<b>Seat Load Factor (SLF %) <sup>3)</sup></b>						
Europe	66.8%	65.7%	1.1%	64.5%	63.8%	0.7%
Intercontinental	78.5%	78.9%	-0.4%	79.1%	80.3%	-1.2%
Total	74.8%	74.7%	0.1%	74.6%	75.1%	-0.5%
<b>Freight Load Factor (%) <sup>4)</sup></b>						
Total	87.5%	86.7%	0.8%	83.6%	82.7%	0.9%
<b>Freight Tonnes Kilometers (FTK, in 1000)</b>						
Total	104'388	89'584	16.5%	202'355	175'512	15.3%

<sup>1)</sup> All passengers; in accordance with Lufthansa, SWISS publishes the number of all passengers instead of revenue passengers.

<sup>2)</sup> A flight includes now all flight legs which are operated under one single flight number; intermediate stops are not considered.

<sup>3)</sup> SLF = RPK / ASK  
deviation in % pts

<sup>4)</sup> Including mail  
deviation in % pts

## Traffic Statistics March 2008 LX Scheduled Services



Swiss  
International  
Air Lines

	March			Cumulative		
	2008	2007		2008	2007	
<b>Number of Passengers <sup>1)</sup></b>						
Europe	858'888	770'639	11.5%	2'281'579	2'041'892	11.7%
Intercontinental	260'399	229'426	13.5%	717'938	640'910	12.0%
Total	1'119'287	1'000'065	11.9%	2'999'517	2'682'802	11.8%
<b>Flights <sup>2)</sup></b>						
Europe	9'551	9'411	1.5%	27'978	27'035	3.5%
Intercontinental	1'362	1'246	9.3%	3'965	3'604	10.0%
Total	10'913	10'657	2.4%	31'943	30'639	4.3%
<b>Available Seat km (ASK, in millions)</b>						
Europe	894	826	8.2%	2'571	2'340	9.9%
Intercontinental	1'941	1'752	10.8%	5'652	5'048	12.0%
Total	2'835	2'578	10.0%	8'223	7'387	11.3%
<b>Revenue Passenger km (RPK, in millions)</b>						
Europe	656	584	12.3%	1'738	1'550	12.1%
Intercontinental	1'644	1'487	10.5%	4'578	4'134	10.7%
Total	2'300	2'071	11.0%	6'316	5'684	11.1%
<b>Seat Load Factor (SLF %) <sup>3)</sup></b>						
Europe	73.4%	70.7%	2.7%	67.6%	66.3%	1.3%
Intercontinental	84.7%	84.9%	-0.2%	81.0%	81.9%	-0.9%
Total	81.1%	80.3%	0.8%	76.8%	76.9%	-0.1%
<b>Freight Load Factor (%) <sup>4)</sup></b>						
Total	88.1%	89.3%	-1.2%	85.2%	85.0%	0.2%
<b>Freight Tonnes Kilometers (FTK, in 1000)</b>						
Total	113'799	101'459	12.2%	316'153	276'972	14.1%

<sup>1)</sup> All passengers; in accordance with Lufthansa, SWISS publishes the number of all passengers instead of revenue passengers.

<sup>2)</sup> A flight includes all flight legs which are operated under one single flight number; intermediate stops are not considered.

<sup>3)</sup> SLF = RPK / ASK  
deviation in % pts

<sup>4)</sup> Including mail  
deviation in % pts

## Traffic Statistics April 2008 LX Scheduled Services



Swiss  
International  
Air Lines

	April			Cumulative		
	2008	2007		2008	2007	
<b>Number of Passengers <sup>1)</sup></b>						
Europe	884'642	792'230	11.7%	3'166'221	2'834'122	11.7%
Intercontinental	250'331	224'182	11.7%	968'269	865'092	11.9%
Total	1'134'973	1'016'412	11.7%	4'134'490	3'699'214	11.8%
<b>Flights <sup>2)</sup></b>						
Europe	9'796	9'089	7.8%	37'774	36'124	4.6%
Intercontinental	1'299	1'213	7.1%	5'264	4'817	9.3%
Total	11'095	10'302	7.7%	43'038	40'941	5.1%
<b>Available Seat km (ASK, in millions)</b>						
Europe	925	833	11.1%	3'496	3'173	10.2%
Intercontinental	1'861	1'702	9.4%	7'513	6'750	11.3%
Total	2'787	2'535	9.9%	11'009	9'923	11.0%
<b>Revenue Passenger km (RPK, in millions)</b>						
Europe	682	613	11.3%	2'420	2'164	11.9%
Intercontinental	1'579	1'433	10.1%	6'157	5'567	10.6%
Total	2'261	2'047	10.5%	8'577	7'731	10.9%
<b>Seat Load Factor (SLF %) <sup>3)</sup></b>						
Europe	73.7%	73.6%	0.1%	69.2%	68.2%	1.0%
Intercontinental	84.8%	84.2%	0.6%	81.9%	82.5%	-0.6%
Total	81.1%	80.7%	0.4%	77.9%	77.9%	0.0%
<b>Freight Load Factor (%) <sup>4)</sup></b>						
Total	84.4%	83.6%	0.8%	85.0%	84.6%	0.4%
<b>Freight Tonnes Kilometers (FTK, in 1000)</b>						
Total	106'164	91'903	15.5%	422'318	368'874	14.5%

<sup>1)</sup> All passengers; in accordance with Lufthansa, SWISS publishes the number of all passengers instead of revenue passengers.

<sup>2)</sup> A flight includes all flight legs which are operated under one single flight number; intermediate stops are not considered.

<sup>3)</sup> SLF = RPK / ASK  
deviation in % pts

<sup>4)</sup> Including mail  
deviation in % pts

## Traffic Statistics May 2008 LX Scheduled Services



Swiss  
International  
Air Lines

	May			Cumulative		
	2008	2007		2008	2007	
<b>Number of Passengers <sup>1)</sup></b>						
Europe	917'866	800'321	14.7%	4'084'087	3'634'443	12.4%
Intercontinental	259'747	221'331	17.4%	1'228'016	1'086'423	13.0%
Total	1'177'613	1'021'652	15.3%	5'312'103	4'720'866	12.5%
<b>Flights <sup>2)</sup></b>						
Europe	10'134	9'495	6.7%	47'908	45'619	5.0%
Intercontinental	1'405	1'240	13.3%	6'669	6'057	10.1%
Total	11'539	10'735	7.5%	54'577	51'676	5.6%
<b>Available Seat km (ASK, in millions)</b>						
Europe	974	871	11.8%	4'470	4'044	10.5%
Intercontinental	2'028	1'732	17.1%	9'541	8'481	12.5%
Total	3'001	2'603	15.3%	14'011	12'525	11.9%
<b>Revenue Passenger km (RPK, in millions)</b>						
Europe	721	616	17.2%	3'142	2'779	13.0%
Intercontinental	1'658	1'425	16.3%	7'815	6'993	11.8%
Total	2'379	2'041	16.6%	10'956	9'772	12.1%
<b>Seat Load Factor (SLF %) <sup>3)</sup></b>						
Europe	74.1%	70.7%	3.4%	70.3%	68.7%	1.6%
Intercontinental	81.8%	82.3%	-0.5%	81.9%	82.4%	-0.5%
Total	79.3%	78.4%	0.9%	78.2%	78.0%	0.2%
<b>Freight Load Factor (%) <sup>4)</sup></b>						
Total	80.7%	83.2%	-2.5%	84.1%	84.3%	-0.2%
<b>Freight Tonnes Kilometers (FTK, in 1000)</b>						
Total	108'461	93'596	15.9%	530'779	462'470	14.8%

<sup>1)</sup> All passengers; in accordance with Lufthansa, SWISS publishes the number of all passengers instead of revenue passengers.

<sup>2)</sup> A flight includes all flight legs which are operated under one single flight number; intermediate stops are not considered.

<sup>3)</sup> SLF = RPK / ASK  
deviation in % pts

<sup>4)</sup> Including mail  
deviation in % pts

## Traffic Statistics June 2008 LX Scheduled Services



Swiss  
International  
Air Lines

	June			Cumulative		
	2008	2007		2008	2007	
<b>Number of Passengers <sup>1)</sup></b>						
Europe	875'232	807'707	8.4%	4'959'319	4'442'150	11.6%
Intercontinental	261'270	226'946	15.1%	1'489'286	1'313'369	13.4%
Total	1'136'502	1'034'653	9.8%	6'448'605	5'755'519	12.0%
<b>Flights <sup>2)</sup></b>						
Europe	9'828	9'203	6.8%	57'736	54'822	5.3%
Intercontinental	1'369	1'206	13.5%	8'038	7'263	10.7%
Total	11'197	10'409	7.6%	65'774	62'085	5.9%
<b>Available Seat km (ASK, in millions)</b>						
Europe	937	846	10.8%	5'407	4'890	10.6%
Intercontinental	1'998	1'692	18.1%	11'539	10'174	13.4%
Total	2'935	2'538	15.7%	16'946	15'063	12.5%
<b>Revenue Passenger km (RPK, in millions)</b>						
Europe	690	623	10.9%	3'832	3'402	12.6%
Intercontinental	1'702	1'475	15.4%	9'517	8'468	12.4%
Total	2'392	2'098	14.0%	13'349	11'869	12.5%
<b>Seat Load Factor (SLF %) <sup>3)</sup></b>						
Europe	73.7%	73.6%	0.1%	70.9%	69.6%	1.3%
Intercontinental	85.2%	87.2%	-2.0%	82.5%	83.2%	-0.7%
Total	81.5%	82.7%	-1.2%	78.8%	78.8%	0.0%
<b>Freight Load Factor (%) <sup>4)</sup></b>						
Total	83.6%	86.8%	-3.2%	84.0%	84.7%	-0.7%
<b>Freight Tonnes Kilometers (FTK, in 1000)</b>						
Total	105'164	96'706	8.7%	635'943	559'176	13.7%

<sup>1)</sup> All passengers; in accordance with Lufthansa, SWISS publishes the number of all passengers instead of revenue passengers.

<sup>2)</sup> A flight includes all flight legs which are operated under one single flight number; intermediate stops are not considered.

<sup>3)</sup> SLF = RPK / ASK  
deviation in % pts

<sup>4)</sup> Including mail  
deviation in % pts

## Traffic Statistics July 2008 LX Scheduled Services



Swiss  
International  
Air Lines

	July			Cumulative		
	2008	2007		2008	2007	
<b>Number of Passengers <sup>1)</sup></b>						
Europe	964'809	882'467	9.3%	5'924'128	5'324'617	11.3%
Intercontinental	292'628	248'166	17.9%	1'781'914	1'561'535	14.1%
Total	1'257'437	1'130'633	11.2%	7'706'042	6'886'152	11.9%
<b>Flights <sup>2)</sup></b>						
Europe	10'229	9'595	6.6%	67'965	64'417	5.5%
Intercontinental	1'422	1'270	12.0%	9'460	8'533	10.9%
Total	11'651	10'865	7.2%	77'425	72'950	6.1%
<b>Available Seat km (ASK, in millions)</b>						
Europe	991	900	10.1%	6'398	5'790	10.5%
Intercontinental	2'103	1'791	17.4%	13'642	11'964	14.0%
Total	3'094	2'691	15.0%	20'040	17'754	12.9%
<b>Revenue Passenger km (RPK, in millions)</b>						
Europe	777	700	11.0%	4'609	4'102	12.4%
Intercontinental	1'886	1'586	18.9%	11'402	10'054	13.4%
Total	2'663	2'286	16.5%	16'012	14'156	13.1%
<b>Seat Load Factor (SLF %) <sup>3)</sup></b>						
Europe	78.4%	77.8%	0.6%	72.0%	70.8%	1.2%
Intercontinental	89.7%	88.6%	1.1%	83.6%	84.0%	-0.4%
Total	86.1%	85.0%	1.1%	79.9%	79.7%	0.2%
<b>Freight Load Factor (%) <sup>4)</sup></b>						
Total	82.1%	83.7%	-1.6%	83.7%	84.6%	-0.9%
<b>Freight Tonnes Kilometers (FTK, in 1000)</b>						
Total	111'233	95'245	16.8%	747'175	654'421	14.2%

<sup>1)</sup> All passengers; in accordance with Lufthansa, SWISS publishes the number of all passengers instead of revenue passengers.

<sup>2)</sup> A flight includes all flight legs which are operated under one single flight number; intermediate stops are not considered.

<sup>3)</sup> SLF = RPK / ASK  
deviation in % pts

<sup>4)</sup> Including mail  
deviation in % pts

## Traffic Statistics August 2008 LX Scheduled Services



Swiss  
International  
Air Lines

	August			Cumulative		
	2008	2007		2008	2007	
<b>Number of Passengers <sup>1)</sup></b>						
Europe	948'540	874'694	8.4%	6'872'668	6'199'311	10.9%
Intercontinental	295'104	251'650	17.3%	2'077'018	1'813'185	14.6%
Total	1'243'644	1'126'344	10.4%	8'949'686	8'012'496	11.7%
<b>Flights <sup>2)</sup></b>						
Europe	10'171	9'606	5.9%	78'136	74'023	5.6%
Intercontinental	1'423	1'291	10.2%	10'883	9'824	10.8%
Total	11'594	10'897	6.4%	89'019	83'847	6.2%
<b>Available Seat km (ASK, in millions)</b>						
Europe	992	899	10.4%	7'391	6'689	10.5%
Intercontinental	2'108	1'840	14.5%	15'750	13'805	14.1%
Total	3'100	2'739	13.2%	23'140	20'493	12.9%
<b>Revenue Passenger km (RPK, in millions)</b>						
Europe	770	696	10.7%	5'380	4'798	12.1%
Intercontinental	1'886	1'607	17.4%	13'288	11'661	14.0%
Total	2'656	2'303	15.4%	18'668	16'459	13.4%
<b>Seat Load Factor (SLF %) <sup>3)</sup></b>						
Europe	77.6%	77.4%	0.2%	72.8%	71.7%	1.1%
Intercontinental	89.5%	87.3%	2.2%	84.4%	84.5%	-0.1%
Total	85.7%	84.1%	1.6%	80.7%	80.3%	0.4%
<b>Estimated Freight Load Factor (%) <sup>4)</sup></b>						
Total	79.8%	79.8%	0.0%	83.2%	84.0%	-0.8%
<b>Estimated Freight Tonnes Kilometers (FTK, in 1000)</b>						
Total	111'241	92'554	20.2%	858'417	746'975	14.9%

<sup>1)</sup> All passengers; in accordance with Lufthansa, SWISS publishes the number of all passengers instead of revenue passengers.

<sup>2)</sup> A flight includes all flight legs which are operated under one single flight number; intermediate stops are not considered.

<sup>3)</sup> SLF = RPK / ASK  
deviation in % pts

<sup>4)</sup> Including mail  
deviation in % pts

## Traffic Statistics September 2008 LX Scheduled Services



Swiss  
International  
Air Lines

	September			Cumulative		
	2008	2007		2008	2007	
<b>Number of Passengers <sup>1)</sup></b>						
Europe	915'799	857'869	6.8%	7'788'467	7'057'180	10.4%
Intercontinental	262'563	229'952	14.2%	2'339'581	2'043'137	14.5%
Total	1'178'362	1'087'821	8.3%	10'128'048	9'100'317	11.3%
<b>Flights <sup>2)</sup></b>						
Europe	9'850	9'202	7.0%	87'986	83'225	5.7%
Intercontinental	1'358	1'243	9.3%	12'241	11'067	10.6%
Total	11'208	10'445	7.3%	100'227	94'292	6.3%
<b>Available Seat km (ASK, in millions)</b>						
Europe	945	857	10.2%	8'336	7'546	10.5%
Intercontinental	2'013	1'784	12.8%	17'763	15'589	13.9%
Total	2'958	2'641	12.0%	26'098	23'134	12.8%
<b>Revenue Passenger km (RPK, in millions)</b>						
Europe	723	665	8.8%	6'103	5'463	11.7%
Intercontinental	1'726	1'494	15.5%	15'014	13'155	14.1%
Total	2'449	2'159	13.4%	21'117	18'617	13.4%
<b>Seat Load Factor (SLF %) <sup>3)</sup></b>						
Europe	76.5%	77.6%	-1.1%	73.2%	72.4%	0.8%
Intercontinental	85.7%	83.7%	2.0%	84.5%	84.4%	0.1%
Total	82.8%	81.7%	1.1%	80.9%	80.5%	0.4%
<b>Estimated Freight Load Factor (%) <sup>4)</sup></b>						
Total	83.5%	84.2%	-0.7%	83.3%	84.0%	-0.7%
<b>Estimated Freight Tonnes Kilometers (FTK, in 1000)</b>						
Total	106'521	98'369	8.3%	964'938	845'344	14.1%

<sup>1)</sup> All passengers; in accordance with Lufthansa, SWISS publishes the number of all passengers instead of revenue passengers.

<sup>2)</sup> A flight includes all flight legs which are operated under one single flight number; intermediate stops are not considered.

<sup>3)</sup> SLF = RPK / ASK  
deviation in % pts

<sup>4)</sup> Including mail  
deviation in % pts

## Traffic Statistics October 2008 LX Scheduled Services



Swiss  
International  
Air Lines

	October			Cumulative		
	2008	2007		2008	2007	
<b>Number of Passengers <sup>1)</sup></b>						
Europe	919'924	873'291	5.3%	8'708'391	7'930'471	9.8%
Intercontinental	278'265	247'547	12.4%	2'617'846	2'290'684	14.3%
Total	1'198'189	1'120'838	6.9%	11'326'237	10'221'155	10.8%
<b>Flights <sup>2)</sup></b>						
Europe	10'206	9'582	6.5%	98'192	92'807	5.8%
Intercontinental	1'398	1'280	9.2%	13'639	12'347	10.5%
Total	11'604	10'862	6.8%	111'831	105'154	6.3%
<b>Available Seat km (ASK, in millions)</b>						
Europe	978	881	11.0%	9'314	8'427	10.5%
Intercontinental	2'075	1'849	12.3%	19'838	17'437	13.8%
Total	3'053	2'730	11.9%	29'152	25'864	12.7%
<b>Revenue Passenger km (RPK, in millions)</b>						
Europe	718	667	7.6%	6'821	6'130	11.3%
Intercontinental	1'787	1'590	12.4%	16'801	14'745	13.9%
Total	2'505	2'257	11.0%	23'622	20'875	13.2%
<b>Seat Load Factor (SLF %) <sup>3)</sup></b>						
Europe	73.4%	75.8%	-2.4%	73.2%	72.7%	0.5%
Intercontinental	86.1%	86.0%	0.1%	84.7%	84.6%	0.1%
Total	82.0%	82.7%	-0.7%	81.0%	80.7%	0.3%
<b>Estimated Freight Load Factor (%) <sup>4)</sup></b>						
Total	85.2%	86.0%	-0.8%	83.5%	84.2%	-0.7%
<b>Estimated Freight Tonnes Kilometers (FTK, in 1000)</b>						
Total	109'428	102'989	6.3%	1'074'366	948'333	13.3%

<sup>1)</sup> All passengers; in accordance with Lufthansa, SWISS publishes the number of all passengers instead of revenue passengers.

<sup>2)</sup> A flight includes all flight legs which are operated under one single flight number; intermediate stops are not considered.

<sup>3)</sup> SLF = RPK / ASK  
deviation in % pts

<sup>4)</sup> Including mail  
deviation in % pts