



Media release

Zurich Airport, 12 January 2009

SWISS sets passenger and cargo records in 2008 **Economic crisis depresses December traffic results**

SWISS carried a total of 13.5 million passengers in 2008 – a 10.3% increase on the 12.2 million of the previous year. Despite a challenging economic environment, SWISS was able to ensure that its substantial increase in production (which was up 12% in available seat-kilometre terms) was fully absorbed by market demand: systemwide seat load factor stood at 80.3%, compared to 80.2% for 2007. SWISS operated 134 401 flights (or over 360 flights a day) in 2008, a 6.4% increase on the prior year.

Seat load factor for 2008 for the SWISS *intercontinental network* remained broadly stable at a high 84.2% (2007: 84.3%). While available seat-kilometre capacity was a 12.5% increase on the prior year, long-haul traffic volumes were raised 12.4% in revenue passenger-kilometre terms.

Seat load factor on SWISS's *European services* was improved slightly by 0.3 percentage points to 72.1%. European available seat-kilometre capacity was 10.8% up on the previous year, while revenue passenger-kilometre traffic rose 11.4%.

The airfreight business of *Swiss WorldCargo* showed a positive overall trend for the year. Total cargo traffic was 7.3% up in revenue tonne-kilometre terms; and cargo load factor (by volume) stood at a high 83.8%, only slightly down from the 84.6% of 2007.

The economic crisis had a growing impact on SWISS's December results. While the 1 065 557 passengers carried were a 6.4% increase on the 1 001 765 of the same month the previous year, systemwide seat load factor sustained a 1.9-percentage-point decline, from the 78.2% of December 2007 to 76.3%, thanks in particular to falling demand for premium-segment travel. SWISS's cargo business



suffered a sizeable drop in demand: airfreight volumes for December 2008 were 12.9% below their prior-year equivalent in revenue tonne-kilometre terms.

Traffic Statistics January-December 2008
LX Scheduled Services

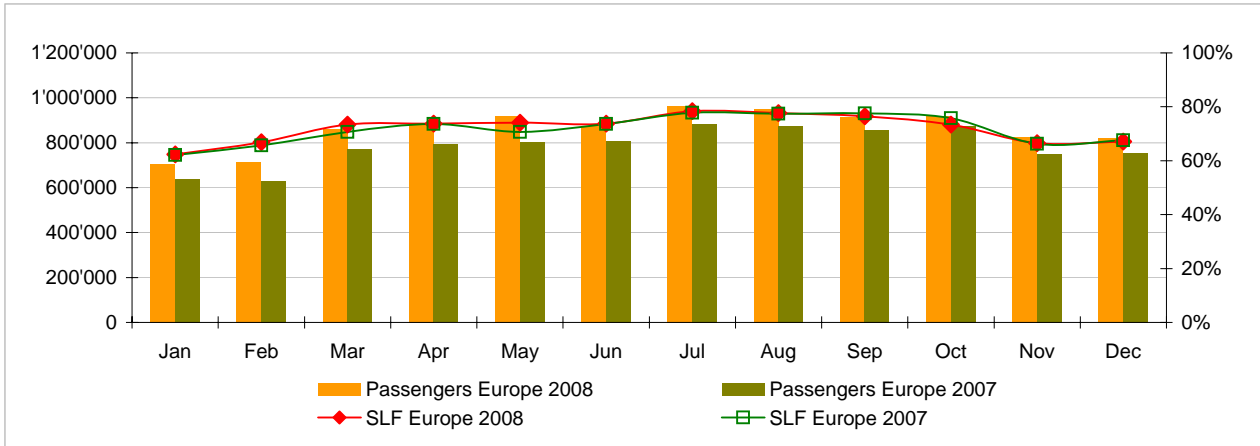


	Passengers Europe	Passengers Intercontinental	Passengers Total	SLF Europe	SLF Intercontinental	SLF Total
Jan	706'543	235'513	942'056	62.4%	79.7%	74.3%
Feb	716'148	222'026	938'174	66.8%	78.5%	74.8%
Mar	858'888	260'399	1'119'287	73.4%	84.7%	81.1%
Apr	884'642	250'331	1'134'973	73.7%	84.8%	81.1%
May	917'866	259'747	1'177'613	74.1%	81.8%	79.3%
Jun	875'232	261'270	1'136'502	73.7%	85.2%	81.5%
Jul	964'809	292'628	1'257'437	78.4%	89.7%	86.1%
Aug	948'540	295'104	1'243'644	77.6%	89.5%	85.7%
Sep	915'799	262'563	1'178'362	76.5%	85.7%	82.8%
Oct	919'924	278'265	1'198'189	73.4%	86.1%	82.0%
Nov	823'473	251'457	1'074'930	66.5%	82.5%	77.4%
Dec	820'576	244'981	1'065'557	67.1%	80.8%	76.3%

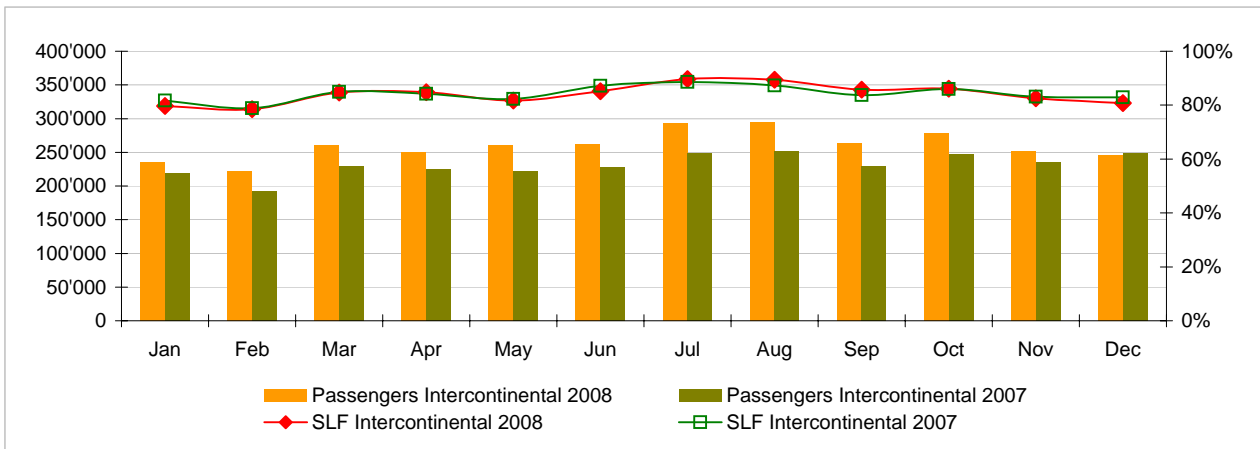
Comparison Passengers and Seat Load Factor (SLF %) versus prior year



Passengers and Seat Load Factor (SLF %) European Routes
Comparison versus prior year



Passengers and Seat Load Factor (SLF %) Intercontinental Routes
Comparison versus prior year



Traffic Statistics January 2008 LX Scheduled Services



Swiss
International
Air Lines

	January			Cumulative		
	2008	2007		2008	2007	
Number of Passengers ¹⁾						
Europe	706'543	639'682	10.5%	706'543	639'682	10.5%
Intercontinental	235'513	218'491	7.8%	235'513	218'491	7.8%
Total	942'056	858'173	9.8%	942'056	858'173	9.8%
Flights ²⁾						
Europe	9'530	9'116	4.5%	9'530	9'116	4.5%
Intercontinental	1'345	1'232	9.2%	1'345	1'232	9.2%
Total	10'875	10'348	5.1%	10'875	10'348	5.1%
Available Seat km (ASK, in millions)						
Europe	867	785	10.4%	867	785	10.4%
Intercontinental	1'913	1'718	11.4%	1'913	1'718	11.4%
Total	2'780	2'503	11.0%	2'780	2'503	11.0%
Revenue Passenger km (RPK, in millions)						
Europe	541	488	10.8%	541	488	10.8%
Intercontinental	1'524	1'403	8.7%	1'524	1'403	8.7%
Total	2'065	1'891	9.2%	2'065	1'891	9.2%
Seat Load Factor (SLF %) ³⁾						
Europe	62.4%	62.1%	0.3%	62.4%	62.1%	0.3%
Intercontinental	79.7%	81.7%	-2.0%	79.7%	81.7%	-2.0%
Total	74.3%	75.5%	-1.2%	74.3%	75.5%	-1.2%
Freight Load Factor (%) ⁴⁾						
Total	79.8%	78.9%	0.9%	79.8%	78.9%	0.9%
Freight Tonnes Kilometers (FTK, in 1000)						
Total	97'966	85'928	14.0%	97'966	85'928	14.0%

¹⁾ All passengers; in accordance with Lufthansa, SWISS publishes the number of all passengers instead of revenue passengers.

²⁾ A flight includes all flight legs which are operated under one single flight number; intermediate stops are not considered.

³⁾ SLF = RPK / ASK
deviation in % pts

⁴⁾ Including mail
deviation in % pts

Traffic Statistics February 2008 LX Scheduled Services



	February			Cumulative		
	2008	2007		2008	2007	
Number of Passengers ¹⁾						
Europe	716'148	631'571	13.4%	1'422'691	1'271'253	11.9%
Intercontinental	222'026	192'993	15.0%	457'539	411'484	11.2%
Total	938'174	824'564	13.8%	1'880'230	1'682'737	11.7%
Flights ²⁾						
Europe	8'897	8'508	4.6%	18'427	17'624	4.6%
Intercontinental	1'258	1'126	11.7%	2'603	2'358	10.4%
Total	10'155	9'634	5.4%	21'030	19'982	5.2%
Available Seat km (ASK, in millions)						
Europe	810	728	11.3%	1'677	1'513	10.8%
Intercontinental	1'797	1'577	13.9%	3'710	3'296	12.6%
Total	2'608	2'306	13.1%	5'388	4'809	12.0%
Revenue Passenger km (RPK, in millions)						
Europe	541	478	13.2%	1'082	966	12.0%
Intercontinental	1'410	1'244	13.3%	2'935	2'647	10.9%
Total	1'952	1'722	13.3%	4'017	3'613	11.2%
Seat Load Factor (SLF %) ³⁾						
Europe	66.8%	65.7%	1.1%	64.5%	63.8%	0.7%
Intercontinental	78.5%	78.9%	-0.4%	79.1%	80.3%	-1.2%
Total	74.8%	74.7%	0.1%	74.6%	75.1%	-0.5%
Freight Load Factor (%) ⁴⁾						
Total	87.5%	86.7%	0.8%	83.6%	82.7%	0.9%
Freight Tonnes Kilometers (FTK, in 1000)						
Total	104'388	89'584	16.5%	202'355	175'512	15.3%

¹⁾ All passengers; in accordance with Lufthansa, SWISS publishes the number of all passengers instead of revenue passengers.

²⁾ A flight includes now all flight legs which are operated under one single flight number; intermediate stops are not considered.

³⁾ SLF = RPK / ASK
deviation in % pts

⁴⁾ Including mail
deviation in % pts

Traffic Statistics March 2008 LX Scheduled Services



	March			Cumulative		
	2008	2007		2008	2007	
Number of Passengers ¹⁾						
Europe	858'888	770'639	11.5%	2'281'579	2'041'892	11.7%
Intercontinental	260'399	229'426	13.5%	717'938	640'910	12.0%
Total	1'119'287	1'000'065	11.9%	2'999'517	2'682'802	11.8%
Flights ²⁾						
Europe	9'551	9'411	1.5%	27'978	27'035	3.5%
Intercontinental	1'362	1'246	9.3%	3'965	3'604	10.0%
Total	10'913	10'657	2.4%	31'943	30'639	4.3%
Available Seat km (ASK, in millions)						
Europe	894	826	8.2%	2'571	2'340	9.9%
Intercontinental	1'941	1'752	10.8%	5'652	5'048	12.0%
Total	2'835	2'578	10.0%	8'223	7'387	11.3%
Revenue Passenger km (RPK, in millions)						
Europe	656	584	12.3%	1'738	1'550	12.1%
Intercontinental	1'644	1'487	10.5%	4'578	4'134	10.7%
Total	2'300	2'071	11.0%	6'316	5'684	11.1%
Seat Load Factor (SLF %) ³⁾						
Europe	73.4%	70.7%	2.7%	67.6%	66.3%	1.3%
Intercontinental	84.7%	84.9%	-0.2%	81.0%	81.9%	-0.9%
Total	81.1%	80.3%	0.8%	76.8%	76.9%	-0.1%
Freight Load Factor (%) ⁴⁾						
Total	88.1%	89.3%	-1.2%	85.2%	85.0%	0.2%
Freight Tonnes Kilometers (FTK, in 1000)						
Total	113'799	101'459	12.2%	316'153	276'972	14.1%

¹⁾ All passengers; in accordance with Lufthansa, SWISS publishes the number of all passengers instead of revenue passengers.

²⁾ A flight includes all flight legs which are operated under one single flight number; intermediate stops are not considered.

³⁾ SLF = RPK / ASK
deviation in % pts

⁴⁾ Including mail
deviation in % pts

Traffic Statistics April 2008 LX Scheduled Services



	April			Cumulative		
	2008	2007		2008	2007	
Number of Passengers ¹⁾						
Europe	884'642	792'230	11.7%	3'166'221	2'834'122	11.7%
Intercontinental	250'331	224'182	11.7%	968'269	865'092	11.9%
Total	1'134'973	1'016'412	11.7%	4'134'490	3'699'214	11.8%
Flights ²⁾						
Europe	9'796	9'089	7.8%	37'774	36'124	4.6%
Intercontinental	1'299	1'213	7.1%	5'264	4'817	9.3%
Total	11'095	10'302	7.7%	43'038	40'941	5.1%
Available Seat km (ASK, in millions)						
Europe	925	833	11.1%	3'496	3'173	10.2%
Intercontinental	1'861	1'702	9.4%	7'513	6'750	11.3%
Total	2'787	2'535	9.9%	11'009	9'923	11.0%
Revenue Passenger km (RPK, in millions)						
Europe	682	613	11.3%	2'420	2'164	11.9%
Intercontinental	1'579	1'433	10.1%	6'157	5'567	10.6%
Total	2'261	2'047	10.5%	8'577	7'731	10.9%
Seat Load Factor (SLF %) ³⁾						
Europe	73.7%	73.6%	0.1%	69.2%	68.2%	1.0%
Intercontinental	84.8%	84.2%	0.6%	81.9%	82.5%	-0.6%
Total	81.1%	80.7%	0.4%	77.9%	77.9%	0.0%
Freight Load Factor (%) ⁴⁾						
Total	84.4%	83.6%	0.8%	85.0%	84.6%	0.4%
Freight Tonnes Kilometers (FTK, in 1000)						
Total	106'164	91'903	15.5%	422'318	368'874	14.5%

¹⁾ All passengers; in accordance with Lufthansa, SWISS publishes the number of all passengers instead of revenue passengers.

²⁾ A flight includes all flight legs which are operated under one single flight number; intermediate stops are not considered.

³⁾ SLF = RPK / ASK
deviation in % pts

⁴⁾ Including mail
deviation in % pts

Traffic Statistics May 2008 LX Scheduled Services



	May			Cumulative		
	2008	2007		2008	2007	
Number of Passengers ¹⁾						
Europe	917'866	800'321	14.7%	4'084'087	3'634'443	12.4%
Intercontinental	259'747	221'331	17.4%	1'228'016	1'086'423	13.0%
Total	1'177'613	1'021'652	15.3%	5'312'103	4'720'866	12.5%
Flights ²⁾						
Europe	10'134	9'495	6.7%	47'908	45'619	5.0%
Intercontinental	1'405	1'240	13.3%	6'669	6'057	10.1%
Total	11'539	10'735	7.5%	54'577	51'676	5.6%
Available Seat km (ASK, in millions)						
Europe	974	871	11.8%	4'470	4'044	10.5%
Intercontinental	2'028	1'732	17.1%	9'541	8'481	12.5%
Total	3'001	2'603	15.3%	14'011	12'525	11.9%
Revenue Passenger km (RPK, in millions)						
Europe	721	616	17.2%	3'142	2'779	13.0%
Intercontinental	1'658	1'425	16.3%	7'815	6'993	11.8%
Total	2'379	2'041	16.6%	10'956	9'772	12.1%
Seat Load Factor (SLF %) ³⁾						
Europe	74.1%	70.7%	3.4%	70.3%	68.7%	1.6%
Intercontinental	81.8%	82.3%	-0.5%	81.9%	82.4%	-0.5%
Total	79.3%	78.4%	0.9%	78.2%	78.0%	0.2%
Freight Load Factor (%) ⁴⁾						
Total	80.7%	83.2%	-2.5%	84.1%	84.3%	-0.2%
Freight Tonnes Kilometers (FTK, in 1000)						
Total	108'461	93'596	15.9%	530'779	462'470	14.8%

¹⁾ All passengers; in accordance with Lufthansa, SWISS publishes the number of all passengers instead of revenue passengers.

²⁾ A flight includes all flight legs which are operated under one single flight number; intermediate stops are not considered.

³⁾ SLF = RPK / ASK
deviation in % pts

⁴⁾ Including mail
deviation in % pts

Traffic Statistics June 2008 LX Scheduled Services



Swiss
International
Air Lines

	June			Cumulative		
	2008	2007		2008	2007	
Number of Passengers ¹⁾						
Europe	875'232	807'707	8.4%	4'959'319	4'442'150	11.6%
Intercontinental	261'270	226'946	15.1%	1'489'286	1'313'369	13.4%
Total	1'136'502	1'034'653	9.8%	6'448'605	5'755'519	12.0%
Flights ²⁾						
Europe	9'828	9'203	6.8%	57'736	54'822	5.3%
Intercontinental	1'369	1'206	13.5%	8'038	7'263	10.7%
Total	11'197	10'409	7.6%	65'774	62'085	5.9%
Available Seat km (ASK, in millions)						
Europe	937	846	10.8%	5'407	4'890	10.6%
Intercontinental	1'998	1'692	18.1%	11'539	10'174	13.4%
Total	2'935	2'538	15.7%	16'946	15'063	12.5%
Revenue Passenger km (RPK, in millions)						
Europe	690	623	10.9%	3'832	3'402	12.6%
Intercontinental	1'702	1'475	15.4%	9'517	8'468	12.4%
Total	2'392	2'098	14.0%	13'349	11'869	12.5%
Seat Load Factor (SLF %) ³⁾						
Europe	73.7%	73.6%	0.1%	70.9%	69.6%	1.3%
Intercontinental	85.2%	87.2%	-2.0%	82.5%	83.2%	-0.7%
Total	81.5%	82.7%	-1.2%	78.8%	78.8%	0.0%
Freight Load Factor (%) ⁴⁾						
Total	83.6%	86.8%	-3.2%	84.0%	84.7%	-0.7%
Freight Tonnes Kilometers (FTK, in 1000)						
Total	105'164	96'706	8.7%	635'943	559'176	13.7%

¹⁾ All passengers; in accordance with Lufthansa, SWISS publishes the number of all passengers instead of revenue passengers.

²⁾ A flight includes all flight legs which are operated under one single flight number; intermediate stops are not considered.

³⁾ SLF = RPK / ASK
deviation in % pts

⁴⁾ Including mail
deviation in % pts

Traffic Statistics July 2008 LX Scheduled Services



	July			Cumulative		
	2008	2007		2008	2007	
Number of Passengers ¹⁾						
Europe	964'809	882'467	9.3%	5'924'128	5'324'617	11.3%
Intercontinental	292'628	248'166	17.9%	1'781'914	1'561'535	14.1%
Total	1'257'437	1'130'633	11.2%	7'706'042	6'886'152	11.9%
Flights ²⁾						
Europe	10'229	9'595	6.6%	67'965	64'417	5.5%
Intercontinental	1'422	1'270	12.0%	9'460	8'533	10.9%
Total	11'651	10'865	7.2%	77'425	72'950	6.1%
Available Seat km (ASK, in millions)						
Europe	991	900	10.1%	6'398	5'790	10.5%
Intercontinental	2'103	1'791	17.4%	13'642	11'964	14.0%
Total	3'094	2'691	15.0%	20'040	17'754	12.9%
Revenue Passenger km (RPK, in millions)						
Europe	777	700	11.0%	4'609	4'102	12.4%
Intercontinental	1'886	1'586	18.9%	11'402	10'054	13.4%
Total	2'663	2'286	16.5%	16'012	14'156	13.1%
Seat Load Factor (SLF %) ³⁾						
Europe	78.4%	77.8%	0.6%	72.0%	70.8%	1.2%
Intercontinental	89.7%	88.6%	1.1%	83.6%	84.0%	-0.4%
Total	86.1%	85.0%	1.1%	79.9%	79.7%	0.2%
Freight Load Factor (%) ⁴⁾						
Total	82.1%	83.7%	-1.6%	83.7%	84.6%	-0.9%
Freight Tonnes Kilometers (FTK, in 1000)						
Total	111'233	95'245	16.8%	747'175	654'421	14.2%

¹⁾ All passengers; in accordance with Lufthansa, SWISS publishes the number of all passengers instead of revenue passengers.

²⁾ A flight includes all flight legs which are operated under one single flight number; intermediate stops are not considered.

³⁾ SLF = RPK / ASK
deviation in % pts

⁴⁾ Including mail
deviation in % pts

Traffic Statistics August 2008 LX Scheduled Services



	August			Cumulative		
	2008	2007		2008	2007	
Number of Passengers ¹⁾						
Europe	948'540	874'694	8.4%	6'872'668	6'199'311	10.9%
Intercontinental	295'104	251'650	17.3%	2'077'018	1'813'185	14.6%
Total	1'243'644	1'126'344	10.4%	8'949'686	8'012'496	11.7%
Flights ²⁾						
Europe	10'171	9'606	5.9%	78'136	74'023	5.6%
Intercontinental	1'423	1'291	10.2%	10'883	9'824	10.8%
Total	11'594	10'897	6.4%	89'019	83'847	6.2%
Available Seat km (ASK, in millions)						
Europe	992	899	10.4%	7'391	6'689	10.5%
Intercontinental	2'108	1'840	14.5%	15'750	13'805	14.1%
Total	3'100	2'739	13.2%	23'140	20'493	12.9%
Revenue Passenger km (RPK, in millions)						
Europe	770	696	10.7%	5'380	4'798	12.1%
Intercontinental	1'886	1'607	17.4%	13'288	11'661	14.0%
Total	2'656	2'303	15.4%	18'668	16'459	13.4%
Seat Load Factor (SLF %) ³⁾						
Europe	77.6%	77.4%	0.2%	72.8%	71.7%	1.1%
Intercontinental	89.5%	87.3%	2.2%	84.4%	84.5%	-0.1%
Total	85.7%	84.1%	1.6%	80.7%	80.3%	0.4%
Freight Load Factor (%) ⁴⁾						
Total	67.2%	79.8%	-12.6%	81.7%	84.0%	-2.3%
Freight Tonnes Kilometers (FTK, in 1000)						
Total	95'828	92'554	3.5%	843'004	746'975	12.9%

¹⁾ All passengers; in accordance with Lufthansa, SWISS publishes the number of all passengers instead of revenue passengers.

²⁾ A flight includes all flight legs which are operated under one single flight number; intermediate stops are not considered.

³⁾ SLF = RPK / ASK
deviation in % pts

⁴⁾ Including mail
deviation in % pts

Traffic Statistics September 2008 LX Scheduled Services



	September			Cumulative		
	2008	2007		2008	2007	
Number of Passengers ¹⁾						
Europe	915'799	857'869	6.8%	7'788'467	7'057'180	10.4%
Intercontinental	262'563	229'952	14.2%	2'339'581	2'043'137	14.5%
Total	1'178'362	1'087'821	8.3%	10'128'048	9'100'317	11.3%
Flights ²⁾						
Europe	9'850	9'202	7.0%	87'986	83'225	5.7%
Intercontinental	1'358	1'243	9.3%	12'241	11'067	10.6%
Total	11'208	10'445	7.3%	100'227	94'292	6.3%
Available Seat km (ASK, in millions)						
Europe	945	857	10.2%	8'336	7'546	10.5%
Intercontinental	2'013	1'784	12.8%	17'763	15'589	13.9%
Total	2'958	2'641	12.0%	26'098	23'134	12.8%
Revenue Passenger km (RPK, in millions)						
Europe	723	665	8.8%	6'103	5'463	11.7%
Intercontinental	1'726	1'494	15.5%	15'014	13'155	14.1%
Total	2'449	2'159	13.4%	21'117	18'617	13.4%
Seat Load Factor (SLF %) ³⁾						
Europe	76.5%	77.6%	-1.1%	73.2%	72.4%	0.8%
Intercontinental	85.7%	83.7%	2.0%	84.5%	84.4%	0.1%
Total	82.8%	81.7%	1.1%	80.9%	80.5%	0.4%
Freight Load Factor (%) ⁴⁾						
Total	69.5%	84.2%	-14.7%	80.3%	84.0%	-3.7%
Freight Tonnes Kilometers (FTK, in 1000)						
Total	99'574	98'369	1.2%	942'577	845'344	11.5%

¹⁾ All passengers; in accordance with Lufthansa, SWISS publishes the number of all passengers instead of revenue passengers.

²⁾ A flight includes all flight legs which are operated under one single flight number; intermediate stops are not considered.

³⁾ SLF = RPK / ASK
deviation in % pts

⁴⁾ Including mail
deviation in % pts

Traffic Statistics October 2008 LX Scheduled Services



	October			Cumulative		
	2008	2007		2008	2007	
Number of Passengers ¹⁾						
Europe	919'924	873'291	5.3%	8'708'391	7'930'471	9.8%
Intercontinental	278'265	247'547	12.4%	2'617'846	2'290'684	14.3%
Total	1'198'189	1'120'838	6.9%	11'326'237	10'221'155	10.8%
Flights ²⁾						
Europe	10'206	9'582	6.5%	98'192	92'807	5.8%
Intercontinental	1'398	1'280	9.2%	13'639	12'347	10.5%
Total	11'604	10'862	6.8%	111'831	105'154	6.3%
Available Seat km (ASK, in millions)						
Europe	978	881	11.0%	9'314	8'427	10.5%
Intercontinental	2'075	1'849	12.3%	19'838	17'437	13.8%
Total	3'053	2'730	11.9%	29'152	25'864	12.7%
Revenue Passenger km (RPK, in millions)						
Europe	718	667	7.6%	6'821	6'130	11.3%
Intercontinental	1'787	1'590	12.4%	16'801	14'745	13.9%
Total	2'505	2'257	11.0%	23'622	20'875	13.2%
Seat Load Factor (SLF %) ³⁾						
Europe	73.4%	75.8%	-2.4%	73.2%	72.7%	0.5%
Intercontinental	86.1%	86.0%	0.1%	84.7%	84.6%	0.1%
Total	82.0%	82.7%	-0.7%	81.0%	80.7%	0.3%
Freight Load Factor (%) ⁴⁾						
Total	69.9%	86.0%	-16.1%	79.3%	84.2%	-4.9%
Freight Tonnes Kilometers (FTK, in 1000)						
Total	101'873	102'989	-1.1%	1'044'450	948'333	10.1%

¹⁾ All passengers; in accordance with Lufthansa, SWISS publishes the number of all passengers instead of revenue passengers.

²⁾ A flight includes all flight legs which are operated under one single flight number; intermediate stops are not considered.

³⁾ SLF = RPK / ASK
deviation in % pts

⁴⁾ Including mail
deviation in % pts

Traffic Statistics November 2008 LX Scheduled Services



Swiss
International
Air Lines

	November			Cumulative		
	2008	2007		2008	2007	
Number of Passengers ¹⁾						
Europe	823'473	750'833	9.7%	9'531'864	8'681'304	9.8%
Intercontinental	251'457	234'805	7.1%	2'869'303	2'525'489	13.6%
Total	1'074'930	985'638	9.1%	12'401'167	11'206'793	10.7%
Flights ²⁾						
Europe	9'891	9'296	6.4%	108'083	102'103	5.9%
Intercontinental	1'343	1'256	6.9%	14'982	13'603	10.1%
Total	11'234	10'552	6.5%	123'065	115'706	6.4%
Available Seat km (ASK, in millions)						
Europe	947	843	12.3%	10'261	9'270	10.7%
Intercontinental	1'978	1'807	9.5%	21'816	19'244	13.4%
Total	2'925	2'650	10.4%	32'076	28'514	12.5%
Revenue Passenger km (RPK, in millions)						
Europe	630	558	12.8%	7'451	6'689	11.4%
Intercontinental	1'632	1'501	8.7%	18'433	16'246	13.5%
Total	2'262	2'060	9.8%	25'884	22'935	12.9%
Seat Load Factor (SLF %) ³⁾						
Europe	66.5%	66.2%	0.3%	72.6%	72.2%	0.4%
Intercontinental	82.5%	83.1%	-0.6%	84.5%	84.4%	0.1%
Total	77.4%	77.7%	-0.3%	80.7%	80.4%	0.3%
Freight Load Factor (%) ⁴⁾						
Total	73.5%	88.1%	-14.6%	78.8%	84.6%	-5.8%
Freight Tonnes Kilometers (FTK, in 1000)						
Total	97'783	105'863	-7.6%	1'142'233	1'054'196	8.4%

¹⁾ All passengers; in accordance with Lufthansa, SWISS publishes the number of all passengers instead of revenue passengers.

²⁾ A flight includes all flight legs which are operated under one single flight number; intermediate stops are not considered.

³⁾ SLF = RPK / ASK
deviation in % pts

⁴⁾ Including mail
deviation in % pts

Traffic Statistics December 2008 LX Scheduled Services



	December			Cumulative		
	2008	2007		2008	2007	
Number of Passengers ¹⁾						
Europe	820'576	753'992	8.8%	10'352'440	9'435'296	9.7%
Intercontinental	244'981	247'773	-1.1%	3'114'284	2'773'262	12.3%
Total	1'065'557	1'001'765	6.4%	13'466'724	12'208'558	10.3%
Flights ²⁾						
Europe	9'995	9'300	7.5%	118'078	111'403	6.0%
Intercontinental	1'341	1'337	0.3%	16'323	14'940	9.3%
Total	11'336	10'637	6.6%	134'401	126'343	6.4%
Available Seat km (ASK, in millions)						
Europe	961	855	12.4%	11'222	10'126	10.8%
Intercontinental	1'995	1'921	3.8%	23'811	21'165	12.5%
Total	2'956	2'777	6.5%	35'032	31'290	12.0%
Revenue Passenger km (RPK, in millions)						
Europe	645	578	11.5%	8'096	7'267	11.4%
Intercontinental	1'612	1'593	1.2%	20'045	17'839	12.4%
Total	2'257	2'171	3.9%	28'141	25'106	12.1%
Seat Load Factor (SLF %) ³⁾						
Europe	67.1%	67.6%	-0.5%	72.1%	71.8%	0.3%
Intercontinental	80.8%	82.9%	-2.1%	84.2%	84.3%	-0.1%
Total	76.3%	78.2%	-1.9%	80.3%	80.2%	0.1%
Freight Load Factor (%) ⁴⁾						
Total	64.5%	84.7%	-20.2%	77.6%	84.6%	-7.0%
Freight Tonnes Kilometers (FTK, in 1000)						
Total	85'015	108'009	-21.3%	1'227'249	1'162'205	5.6%

¹⁾ All passengers; in accordance with Lufthansa, SWISS publishes the number of all passengers instead of revenue passengers.

²⁾ A flight includes all flight legs which are operated under one single flight number; intermediate stops are not considered.

³⁾ SLF = RPK / ASK
deviation in % pts

⁴⁾ Including mail
deviation in % pts