

SWISS traffic figures

January 2008



January load factor maintained despite higher capacity

SWISS offered 10.8% more capacity in available seat-kilometre terms for January 2008 than it had for the same month a year ago. Despite the increase, the systemwide seat load factor of 74.3% recorded for the month was only slightly below the 75.4% of the prior-year period.

Seat load factor on SWISS's European network stood at 62.4%, a 0.5-percentage-point improvement on the 61.9% of January 2007. Seat load factor on SWISS's intercontinental services slipped 1.9 percentage points, from the 81.6% of the prior-year period to 79.7%. SWISS transported 942 056 passengers on its scheduled services in January 2008, 9.8% more than the 858 173 it had carried in the same month a year ago.

SWISS operated 9.2% more intercontinental flights and 4.5% more European services in January 2008 than it had in the prior-year period. All in all, the carrier operated 10 875 scheduled services in the month, compared to 10 348 such services in January 2007.

The airfreight business of **Swiss WorldCargo** registered a cargo load factor (by volume) of 79.9% for January, a one-percentage-point improvement on the 78.9% of the same month last year.

Traffic Statistics January-December 2008
LX Scheduled Services

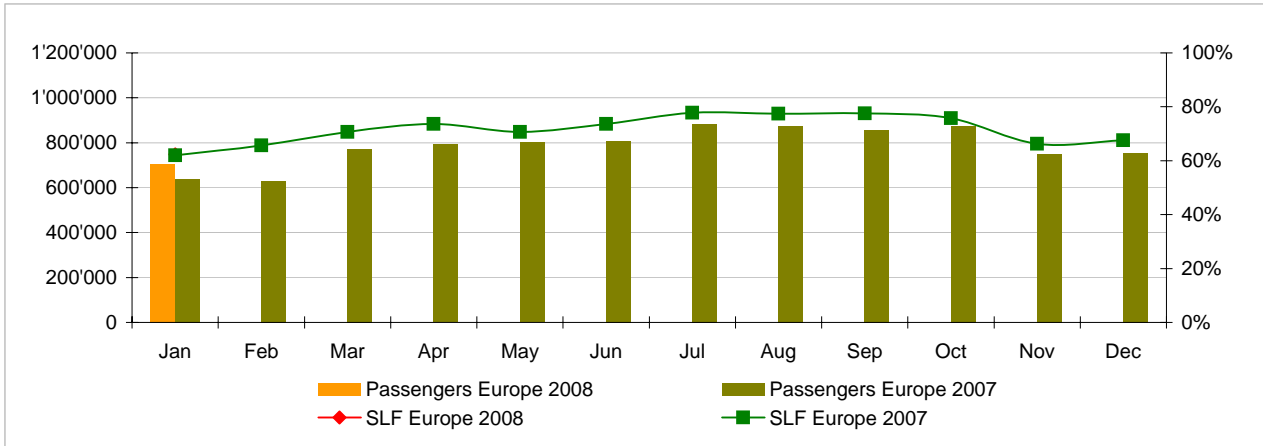


	Passengers Europe	Passengers Intercontinental	Passengers Total	SLF Europe	SLF Intercontinental	SLF Total
Jan	706'543	235'513	942'056	62.4%	79.7%	74.3%
Feb						
Mar						
Apr						
May						
Jun						
Jul						
Aug						
Sep						
Oct						
Nov						
Dec						

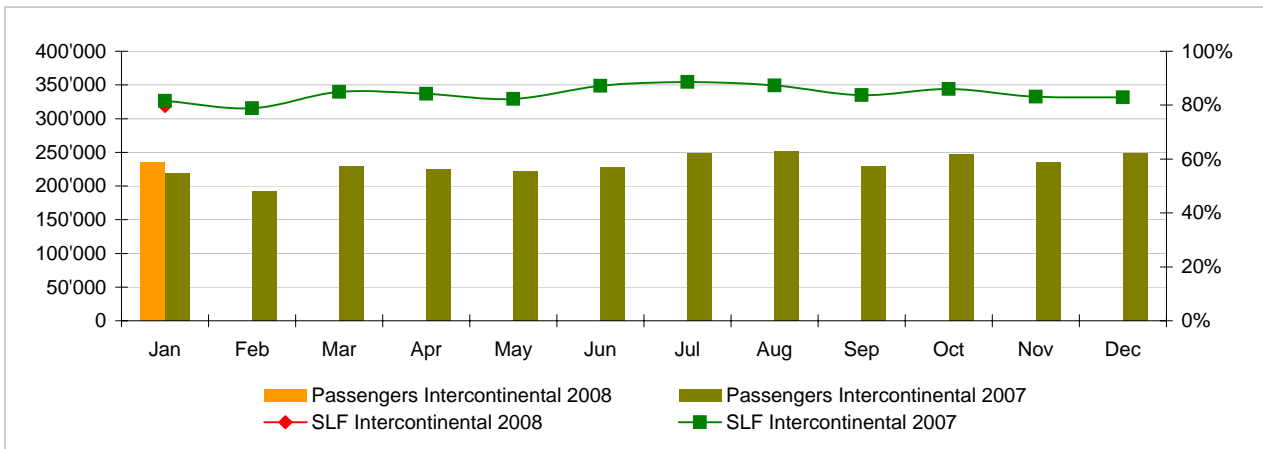
Comparison Passengers and Seat Load Factor (SLF %) versus prior year



Passengers and Seat Load Factor (SLF %) European Routes
Comparison versus prior year



Passengers and Seat Load Factor (SLF %) Intercontinental Routes
Comparison versus prior year



Traffic Statistics January 2008 LX Scheduled Services



Swiss
International
Air Lines

	January			Cumulative		
	2008	2007		2008	2007	
Number of Passengers ¹⁾						
Europe	706'543	639'682	10.5%	706'543	639'682	10.5%
Intercontinental	235'513	218'491	7.8%	235'513	218'491	7.8%
Total	942'056	858'173	9.8%	942'056	858'173	9.8%
Flights ²⁾						
Europe	9'530	9'116	4.5%	9'530	9'116	4.5%
Intercontinental	1'345	1'232	9.2%	1'345	1'232	9.2%
Total	10'875	10'348	5.1%	10'875	10'348	5.1%
Available Seat km (ASK, in millions)						
Europe	867	790	9.8%	867	790	9.8%
Intercontinental	1'913	1'719	11.3%	1'913	1'719	11.3%
Total	2'780	2'509	10.8%	2'780	2'509	10.8%
Revenue Passenger km (RPK, in millions)						
Europe	541	489	10.5%	541	489	10.5%
Intercontinental	1'524	1'403	8.7%	1'524	1'403	8.7%
Total	2'065	1'892	9.1%	2'065	1'892	9.1%
Seat Load Factor (SLF %) ³⁾						
Europe	62.4%	61.9%	0.5%	62.4%	61.9%	0.5%
Intercontinental	79.7%	81.6%	-1.9%	79.7%	81.6%	-1.9%
Total	74.3%	75.4%	-1.1%	74.3%	75.4%	-1.1%
Estimated Freight Load Factor (%) ⁴⁾						
Total	79.9%	78.9%	1.0%	79.9%	78.9%	1.0%
Estimated Freight Tonnes Kilometers (FTK, in 1000)						
Total	100'258	85'928	16.7%	100'258	85'928	16.7%

¹⁾ All passengers; in accordance with Lufthansa, SWISS publishes the number of all passengers instead of revenue passengers.

²⁾ A flight includes all flight legs which are operated under one single flight number; intermediate stops are not considered.

³⁾ SLF = RPK / ASK
deviation in % pts

⁴⁾ Including mail
deviation in % pts