

SWISS traffic figures

February 2009



SWISS sees declines in February load factors

SWISS reports a systemwide seat load factor of 72.2% for February 2009 – a relatively good performance given the difficult economic environment, but one which shows that the carrier, too, is increasingly feeling the present business headwinds. Seat load factor for SWISS's intercontinental services fell 3.1 percentage points, from the 78.5% of February 2008 to 75.4%; and seat load factor on SWISS's European network stood at 65.3%, compared to 66.8% for the same month a year ago. The total number of passengers carried amounted to 901 050, a 4% decline on the 938 174 of the prior-year period.

SWISS conducted 9 949 flights in February 2009, 2% fewer than the 10 155 of the same month last year. Intercontinental services were reduced by 5.4%, and European flights by 1.6%.

SWISS World Cargo saw a further substantial decline in its cargo load factor (by volume) for the month: the 70.6% recorded was 16.9 percentage points below the 87.5% of February last year.

Traffic Statistics January-February 2009
SWISS Scheduled Services

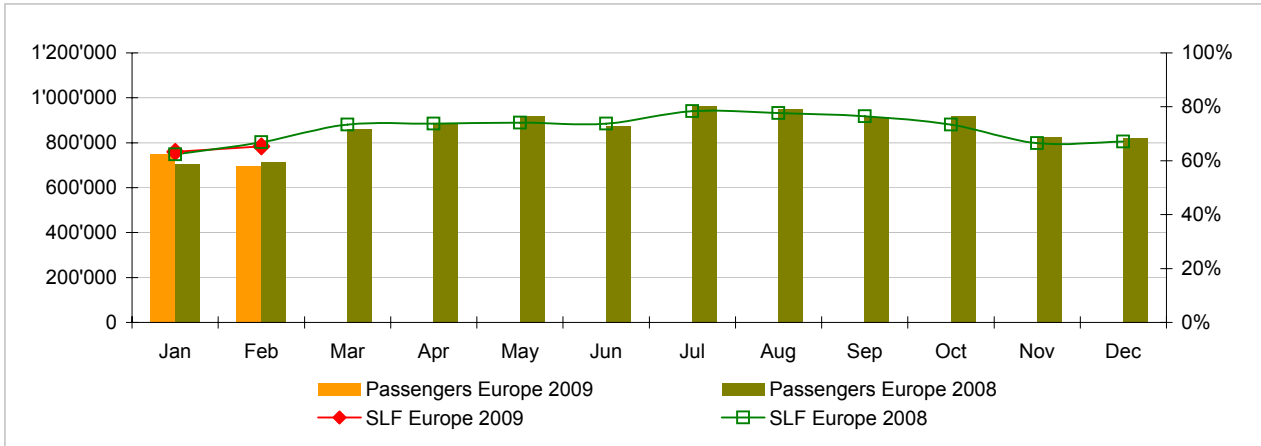


	Passengers Europe	Passengers Intercontinental	Passengers Total	SLF Europe	SLF Intercontinental	SLF Total
Jan	749'018	234'496	983'514	63.3%	77.3%	72.9%
Feb	696'958	204'092	901'050	65.3%	75.4%	72.2%
Mar						
Apr						
May						
Jun						
Jul						
Aug						
Sep						
Oct						
Nov						
Dec						

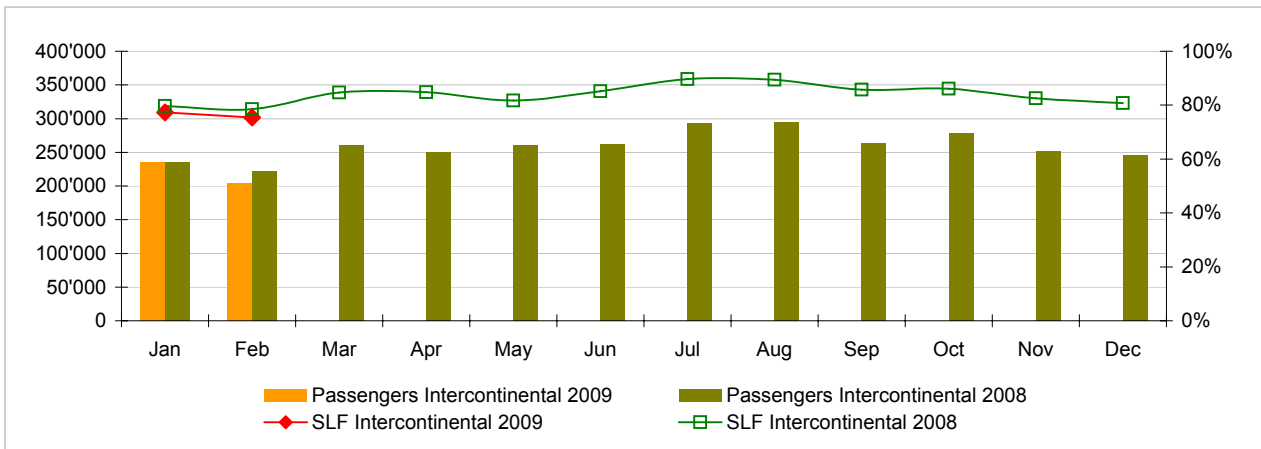
Comparison Passengers and Seat Load Factor (SLF %) versus prior year



Passengers and Seat Load Factor (SLF %) European Routes
 Comparison versus prior year



Passengers and Seat Load Factor (SLF %) Intercontinental Routes
 Comparison versus prior year



Traffic Statistics January 2009 SWISS Scheduled Services



Swiss
International
Air Lines

	January			Cumulative		
	2009	2008		2009	2008	
Number of Passengers ¹⁾						
Europe	749'018	706'543	6.0%	749'018	706'543	6.0%
Intercontinental	234'496	235'513	-0.4%	234'496	235'513	-0.4%
Total	983'514	942'056	4.4%	983'514	942'056	4.4%
Flights ²⁾						
Europe	9'819	9'530	3.0%	9'819	9'530	3.0%
Intercontinental	1'360	1'345	1.1%	1'360	1'345	1.1%
Total	11'179	10'875	2.8%	11'179	10'875	2.8%
Available Seat km (ASK, in millions)						
Europe	935	867	7.9%	935	867	7.9%
Intercontinental	2'020	1'913	5.6%	2'020	1'913	5.6%
Total	2'955	2'780	6.3%	2'955	2'780	6.3%
Revenue Passenger km (RPK, in millions)						
Europe	592	541	9.6%	592	541	9.6%
Intercontinental	1'562	1'524	2.5%	1'562	1'524	2.5%
Total	2'154	2'065	4.3%	2'154	2'065	4.3%
Seat Load Factor (SLF %) ³⁾						
Europe	63.3%	62.4%	0.9%P	63.3%	62.4%	0.9%P
Intercontinental	77.3%	79.7%	-2.4%P	77.3%	79.7%	-2.4%P
Total	72.9%	74.3%	-1.4%P	72.9%	74.3%	-1.4%P
Estimated Cargo Load Factor (%) ⁴⁾						
Total	61.4%	79.8%	-18.4%P	61.4%	79.8%	-18.4%P
Estimated Cargo Tonnes Kilometers (CTK, in 1000) ⁴⁾						
Total	85'099	97'966	-13.1%	85'099	97'966	-13.1%

¹⁾ All passengers; in accordance with Lufthansa, SWISS publishes the number of all passengers instead of revenue passengers.

²⁾ A flight includes all flight legs which are operated under one single flight number; intermediate stops are not considered.

³⁾ SLF = RPK / ASK
deviation in % pts

⁴⁾ Including mail
deviation in % pts

Traffic Statistics February 2009 SWISS Scheduled Services



Swiss
International
Air Lines

	February			Cumulative		
	2009	2008		2009	2008	
Number of Passengers ¹⁾						
Europe	696'958	716'148	-2.7%	1'445'976	1'422'691	1.6%
Intercontinental	204'092	222'026	-8.1%	438'588	457'539	-4.1%
Total	901'050	938'174	-4.0%	1'884'564	1'880'230	0.2%
Flights ²⁾						
Europe	8'759	8'897	-1.6%	18'578	18'427	0.8%
Intercontinental	1'190	1'258	-5.4%	2'550	2'603	-2.0%
Total	9'949	10'155	-2.0%	21'128	21'030	0.5%
Available Seat km (ASK, in millions)						
Europe	827	810	2.1%	1'763	1'677	5.1%
Intercontinental	1'768	1'797	-1.6%	3'787	3'710	2.1%
Total	2'595	2'608	-0.5%	5'550	5'388	3.0%
Revenue Passenger km (RPK, in millions)						
Europe	540	541	-0.2%	1'133	1'082	4.7%
Intercontinental	1'332	1'410	-5.5%	2'894	2'935	-1.4%
Total	1'873	1'952	-4.0%	4'027	4'017	0.3%
Seat Load Factor (SLF %) ³⁾						
Europe	65.3%	66.8%	-1.5%P	64.3%	64.5%	-0.2%P
Intercontinental	75.4%	78.5%	-3.1%P	76.4%	79.1%	-2.7%P
Total	72.2%	74.8%	-2.6%P	72.6%	74.6%	-2.0%P
Estimated Cargo Load Factor (%) ⁴⁾						
Total	70.6%	87.5%	-16.9%P	66.0%	83.6%	-17.6%P
Estimated Cargo Tonnes Kilometers (CTK, in 1000) ⁴⁾						
Total	86'599	104'388	-17.0%	171'699	202'355	-15.1%

¹⁾ All passengers; in accordance with Lufthansa, SWISS publishes the number of all passengers instead of revenue passengers.

²⁾ A flight includes now all flight legs which are operated under one single flight number; intermediate stops are not considered.

³⁾ SLF = RPK / ASK
deviation in % pts

⁴⁾ Including mail
deviation in % pts