



## Media release

Zurich Airport, 9 April 2009

### Cargo business suffers sizeable first-quarter decline

SWISS carried 2 950 685 passengers in the first three months of 2009, 1.6% fewer than the 2 999 517 of the prior-year period. The impact of the present economic crisis on SWISS's passenger business was particularly strong on the intercontinental front, where first-quarter seat load factor fell 4.3 percentage points from the 81.0% of 2008 to 76.7%. Seat load factor for SWISS's European network slipped 1.8 percentage points from 67.6% to 65.8%. SWISS was swift to modify its production in the first quarter of 2009 in anticipation of weakened demand. As a result, production for the period was only slightly above its prior-year level at 32 351 flights (2008: 31 943).

On **intercontinental routes**, traffic volumes declined 3.0% in revenue-passenger-kilometre (RPK) terms, on available-seat-kilometre (ASK) capacity that was 2.5% higher than the prior-year period.

On the **European network**, first-quarter ASK production was a 5.2% increase on January-to-March 2008. Traffic volume was also raised, with total RPKs a 2.4% improvement on the prior-year period.

The airfreight business of **Swiss WorldCargo** suffered a tangible first-quarter decline. Cargo load factor by volume amounted to 66.8%, 18.4 percentage points down on the 85.2% of the prior-year period.

The effect of the present economic crisis were felt even more strongly in SWISS's **March** traffic figures than in its cumulative first-quarter results. SWISS carried 1 066 121 passengers for the month (compared to 1 119 287 in March 2008), and the systemwide seat load factor of 74.4% was a 6.7-percentage-point decline on the 81.1% of the prior-year period. On the cargo front, the 19-percentage-point decline in load factor by volume broadly mirrored the result for the full first quarter.

**Traffic Statistics January-March 2009**  
**SWISS Scheduled Services**

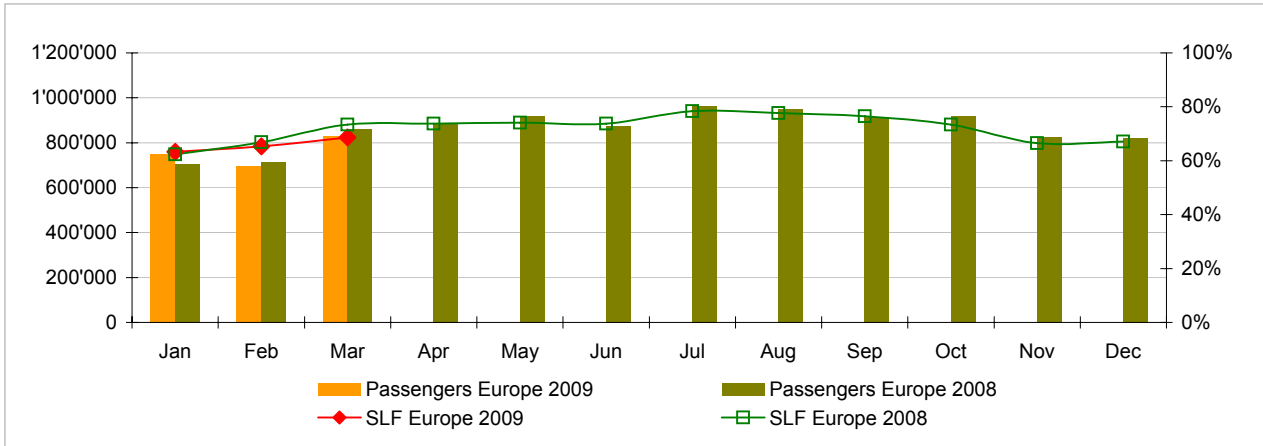


	Passengers Europe	Passengers Intercontinental	Passengers Total	SLF Europe	SLF Intercontinental	SLF Total
Jan	749'018	234'496	<b>983'514</b>	63.3%	77.3%	<b>72.9%</b>
Feb	696'958	204'092	<b>901'050</b>	65.3%	75.4%	<b>72.2%</b>
Mar	827'492	238'629	<b>1'066'121</b>	68.7%	77.1%	<b>74.4%</b>
Apr						
May						
Jun						
Jul						
Aug						
Sep						
Oct						
Nov						
Dec						

**Comparison Passengers and Seat Load Factor (SLF %) versus prior year**



**Passengers and Seat Load Factor (SLF %) European Routes**  
 Comparison versus prior year



**Passengers and Seat Load Factor (SLF %) Intercontinental Routes**  
 Comparison versus prior year



## Traffic Statistics January 2009 SWISS Scheduled Services



Swiss  
International  
Air Lines

	January			Cumulative		
	2009	2008		2009	2008	
<b>Number of Passengers <sup>1)</sup></b>						
Europe	749'018	706'543	6.0%	749'018	706'543	6.0%
Intercontinental	234'496	235'513	-0.4%	234'496	235'513	-0.4%
Total	983'514	942'056	4.4%	983'514	942'056	4.4%
<b>Flights <sup>2)</sup></b>						
Europe	9'819	9'530	3.0%	9'819	9'530	3.0%
Intercontinental	1'360	1'345	1.1%	1'360	1'345	1.1%
Total	11'179	10'875	2.8%	11'179	10'875	2.8%
<b>Available Seat km (ASK, in millions)</b>						
Europe	935	867	7.9%	935	867	7.9%
Intercontinental	2'020	1'913	5.6%	2'020	1'913	5.6%
Total	2'955	2'780	6.3%	2'955	2'780	6.3%
<b>Revenue Passenger km (RPK, in millions)</b>						
Europe	592	541	9.6%	592	541	9.6%
Intercontinental	1'562	1'524	2.5%	1'562	1'524	2.5%
Total	2'154	2'065	4.3%	2'154	2'065	4.3%
<b>Seat Load Factor (SLF %) <sup>3)</sup></b>						
Europe	63.3%	62.4%	0.9%P	63.3%	62.4%	0.9%P
Intercontinental	77.3%	79.7%	-2.4%P	77.3%	79.7%	-2.4%P
Total	72.9%	74.3%	-1.4%P	72.9%	74.3%	-1.4%P
<b>Estimated Cargo Load Factor (%) <sup>4)</sup></b>						
Total	61.4%	79.8%	-18.4%P	61.4%	79.8%	-18.4%P
<b>Estimated Cargo Tonnes Kilometers (CTK, in 1000) <sup>4)</sup></b>						
Total	85'099	97'966	-13.1%	85'099	97'966	-13.1%

<sup>1)</sup> All passengers; in accordance with Lufthansa, SWISS publishes the number of all passengers instead of revenue passengers.

<sup>2)</sup> A flight includes all flight legs which are operated under one single flight number; intermediate stops are not considered.

<sup>3)</sup> SLF = RPK / ASK

<sup>4)</sup> Including mail

## Traffic Statistics February 2009 SWISS Scheduled Services



Swiss  
International  
Air Lines

	February			Cumulative		
	2009	2008		2009	2008	
<b>Number of Passengers <sup>1)</sup></b>						
Europe	696'958	716'148	-2.7%	1'445'976	1'422'691	1.6%
Intercontinental	204'092	222'026	-8.1%	438'588	457'539	-4.1%
Total	901'050	938'174	-4.0%	1'884'564	1'880'230	0.2%
<b>Flights <sup>2)</sup></b>						
Europe	8'759	8'897	-1.6%	18'578	18'427	0.8%
Intercontinental	1'190	1'258	-5.4%	2'550	2'603	-2.0%
Total	9'949	10'155	-2.0%	21'128	21'030	0.5%
<b>Available Seat km (ASK, in millions)</b>						
Europe	827	810	2.1%	1'763	1'677	5.1%
Intercontinental	1'768	1'797	-1.6%	3'787	3'710	2.1%
Total	2'595	2'608	-0.5%	5'550	5'388	3.0%
<b>Revenue Passenger km (RPK, in millions)</b>						
Europe	540	541	-0.2%	1'133	1'082	4.7%
Intercontinental	1'332	1'410	-5.5%	2'894	2'935	-1.4%
Total	1'873	1'952	-4.0%	4'027	4'017	0.3%
<b>Seat Load Factor (SLF %) <sup>3)</sup></b>						
Europe	65.3%	66.8%	-1.5%P	64.3%	64.5%	-0.2%P
Intercontinental	75.4%	78.5%	-3.1%P	76.4%	79.1%	-2.7%P
Total	72.2%	74.8%	-2.6%P	72.6%	74.6%	-2.0%P
<b>Estimated Cargo Load Factor (%) <sup>4)</sup></b>						
Total	70.4%	87.5%	-17.1%P	65.6%	83.6%	-18.0%P
<b>Estimated Cargo Tonnes Kilometers (CTK, in 1000) <sup>4)</sup></b>						
Total	86'599	104'388	-17.0%	171'699	202'355	-15.1%

<sup>1)</sup> All passengers; in accordance with Lufthansa, SWISS publishes the number of all passengers instead of revenue passengers.

<sup>2)</sup> A flight includes now all flight legs which are operated under one single flight number; intermediate stops are not considered.

<sup>3)</sup> SLF = RPK / ASK

<sup>4)</sup> Including mail

## Traffic Statistics March 2009 SWISS Scheduled Services



Swiss  
International  
Air Lines

	March			Cumulative		
	2009	2008		2009	2008	
<b>Number of Passengers <sup>1)</sup></b>						
Europe	827'492	858'888	-3.7%	2'273'468	2'281'579	-0.4%
Intercontinental	238'629	260'399	-8.4%	677'217	717'938	-5.7%
Total	1'066'121	1'119'287	-4.7%	2'950'685	2'999'517	-1.6%
<b>Flights <sup>2)</sup></b>						
Europe	9'869	9'551	3.3%	28'447	27'978	1.7%
Intercontinental	1'354	1'362	-0.6%	3'904	3'965	-1.5%
Total	11'223	10'913	2.8%	32'351	31'943	1.3%
<b>Available Seat km (ASK, in millions)</b>						
Europe	943	894	5.5%	2'705	2'571	5.2%
Intercontinental	2'008	1'941	3.4%	5'796	5'652	2.5%
Total	2'951	2'835	4.1%	8'501	8'223	3.4%
<b>Revenue Passenger km (RPK, in millions)</b>						
Europe	647	656	-1.3%	1'780	1'738	2.4%
Intercontinental	1'548	1'644	-5.8%	4'443	4'578	-3.0%
Total	2'196	2'300	-4.5%	6'223	6'316	-1.5%
<b>Seat Load Factor (SLF %) <sup>3)</sup></b>						
Europe	68.7%	73.4%	-4.7%P	65.8%	67.6%	-1.8%P
Intercontinental	77.1%	84.7%	-7.6%P	76.7%	81.0%	-4.3%P
Total	74.4%	81.1%	-6.7%P	73.2%	76.8%	-3.6%P
<b>Estimated Cargo Load Factor (%) <sup>4)</sup></b>						
Total	69.1%	88.1%	-19.0%P	66.8%	85.2%	-18.4%P
<b>Estimated Cargo Tonnes Kilometers (CTK, in 1000) <sup>4)</sup></b>						
Total	93'772	113'799	-17.6%	265'470	316'153	-16.0%

<sup>1)</sup> All passengers; in accordance with Lufthansa, SWISS publishes the number of all passengers instead of revenue passengers.

<sup>2)</sup> A flight includes all flight legs which are operated under one single flight number; intermediate stops are not considered.

<sup>3)</sup> SLF = RPK / ASK

<sup>4)</sup> Including mail