

# SWISS traffic figures

May 2009



## Seat and cargo load factors still down for May

SWISS reports a systemwide seat load factor of 75.2% for May 2009, a decline of 4.1 percentage points on the same month last year. Seat load factor on SWISS's European network amounted to 74.9%, a 0.8-percentage-point improvement on the 74.1% of May 2008; but intercontinental seat load factor suffered a substantial 6.4-percentage-point fall, from 81.8% to 75.4%.

With production reduced in response to the recent declines in demand, SWISS offered 3.3% less capacity for May than for the same month last year in available-seat-kilometre terms. A total of 1 159 938 passengers flew on SWISS in May 2009, some 1.5% fewer than the 1 177 613 of the prior-year month.

SWISS performed 11 571 flights systemwide in May, 0.3% more than the 11 539 of the same month last year. Intercontinental flights were down by 6.3%, while European services saw an increase of 1.2%.

The cargo load factor (by volume) of **SWISS WorldCargo** remained severely depressed for May. The 63.0% recorded was 17.7 percentage points below its prior-year equivalent.

**Traffic Statistics January-May 2009**  
**SWISS Scheduled Services**

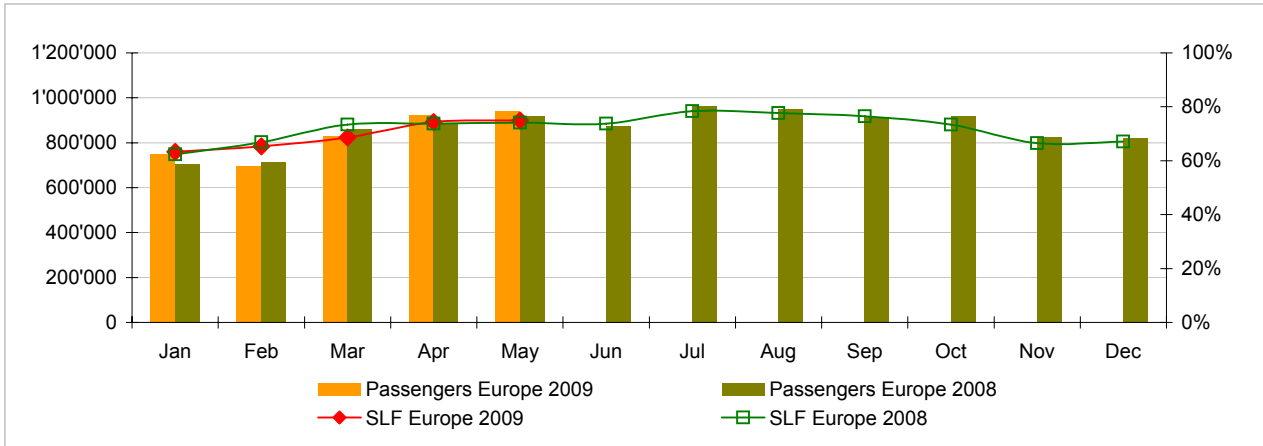


|            | Passengers Europe | Passengers Intercontinental | Passengers Total | SLF Europe | SLF Intercontinental | SLF Total    |
|------------|-------------------|-----------------------------|------------------|------------|----------------------|--------------|
| <b>Jan</b> | 749'018           | 234'496                     | <b>983'514</b>   | 63.3%      | 77.3%                | <b>72.9%</b> |
| <b>Feb</b> | 696'958           | 204'092                     | <b>901'050</b>   | 65.3%      | 75.4%                | <b>72.2%</b> |
| <b>Mar</b> | 827'492           | 238'629                     | <b>1'066'121</b> | 68.7%      | 77.1%                | <b>74.4%</b> |
| <b>Apr</b> | 921'498           | 237'296                     | <b>1'158'794</b> | 74.3%      | 79.5%                | <b>77.7%</b> |
| <b>May</b> | 941'802           | 218'136                     | <b>1'159'938</b> | 74.9%      | 75.4%                | <b>75.2%</b> |
| <b>Jun</b> |                   |                             |                  |            |                      |              |
| <b>Jul</b> |                   |                             |                  |            |                      |              |
| <b>Aug</b> |                   |                             |                  |            |                      |              |
| <b>Sep</b> |                   |                             |                  |            |                      |              |
| <b>Oct</b> |                   |                             |                  |            |                      |              |
| <b>Nov</b> |                   |                             |                  |            |                      |              |
| <b>Dec</b> |                   |                             |                  |            |                      |              |

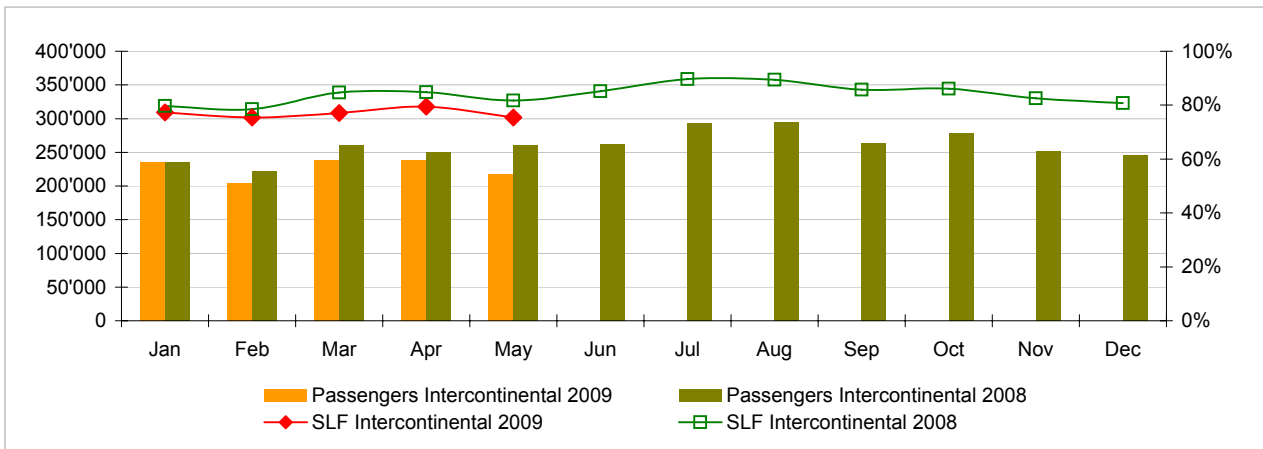
**Comparison Passengers and Seat Load Factor (SLF %) versus prior year**



**Passengers and Seat Load Factor (SLF %) European Routes**  
 Comparison versus prior year



**Passengers and Seat Load Factor (SLF %) Intercontinental Routes**  
 Comparison versus prior year



## Traffic Statistics January 2009 SWISS Scheduled Services



Swiss  
International  
Air Lines

|   | January |         |         | Cumulative |         |         |
|---|---------|---------|---------|------------|---------|---------|
|   | 2009    | 2008    |         | 2009       | 2008    |         |
| <b>Number of Passengers <sup>1)</sup></b>                             |         |         |         |            |         |         |
| Europe  | 749'018 | 706'543 | 6.0%    | 749'018    | 706'543 | 6.0%    |
| Intercontinental  | 234'496 | 235'513 | -0.4%   | 234'496    | 235'513 | -0.4%   |
| Total   | 983'514 | 942'056 | 4.4%    | 983'514    | 942'056 | 4.4%    |
| <b>Flights <sup>2)</sup></b>  |         |         |         |            |         |         |
| Europe  | 9'819   | 9'530   | 3.0%    | 9'819      | 9'530   | 3.0%    |
| Intercontinental  | 1'360   | 1'345   | 1.1%    | 1'360      | 1'345   | 1.1%    |
| Total   | 11'179  | 10'875  | 2.8%    | 11'179     | 10'875  | 2.8%    |
| <b>Available Seat km (ASK, in millions)</b>                           |         |         |         |            |         |         |
| Europe  | 935     | 867     | 7.9%    | 935        | 867     | 7.9%    |
| Intercontinental  | 2'020   | 1'913   | 5.6%    | 2'020      | 1'913   | 5.6%    |
| Total   | 2'955   | 2'780   | 6.3%    | 2'955      | 2'780   | 6.3%    |
| <b>Revenue Passenger km (RPK, in millions)</b>                        |         |         |         |            |         |         |
| Europe  | 592     | 541     | 9.6%    | 592        | 541     | 9.6%    |
| Intercontinental  | 1'562   | 1'524   | 2.5%    | 1'562      | 1'524   | 2.5%    |
| Total   | 2'154   | 2'065   | 4.3%    | 2'154      | 2'065   | 4.3%    |
| <b>Seat Load Factor (SLF %) <sup>3)</sup></b>                         |         |         |         |            |         |         |
| Europe  | 63.3%   | 62.4%   | 0.9%P   | 63.3%      | 62.4%   | 0.9%P   |
| Intercontinental  | 77.3%   | 79.7%   | -2.4%P  | 77.3%      | 79.7%   | -2.4%P  |
| Total   | 72.9%   | 74.3%   | -1.4%P  | 72.9%      | 74.3%   | -1.4%P  |
| <b>Estimated Cargo Load Factor (%) <sup>4)</sup></b>                  |         |         |         |            |         |         |
| Total   | 61.4%   | 79.8%   | -18.4%P | 61.4%      | 79.8%   | -18.4%P |
| <b>Estimated Cargo Tonnes Kilometers (CTK, in 1000) <sup>4)</sup></b> |         |         |         |            |         |         |
| Total   | 85'099  | 97'966  | -13.1%  | 85'099     | 97'966  | -13.1%  |

<sup>1)</sup> All passengers; in accordance with Lufthansa, SWISS publishes the number of all passengers instead of revenue passengers.

<sup>2)</sup> A flight includes all flight legs which are operated under one single flight number; intermediate stops are not considered.

<sup>3)</sup> SLF = RPK / ASK

<sup>4)</sup> Including mail

## Traffic Statistics February 2009 SWISS Scheduled Services



Swiss  
International  
Air Lines

|   | February |         |         | Cumulative |           |         |
|---|----------|---------|---------|------------|-----------|---------|
|   | 2009     | 2008    |         | 2009       | 2008      |         |
| <b>Number of Passengers <sup>1)</sup></b>                             |          |         |         |            |           |         |
| Europe  | 696'958  | 716'148 | -2.7%   | 1'445'976  | 1'422'691 | 1.6%    |
| Intercontinental  | 204'092  | 222'026 | -8.1%   | 438'588    | 457'539   | -4.1%   |
| Total   | 901'050  | 938'174 | -4.0%   | 1'884'564  | 1'880'230 | 0.2%    |
| <b>Flights <sup>2)</sup></b>  |          |         |         |            |           |         |
| Europe  | 8'759    | 8'897   | -1.6%   | 18'578     | 18'427    | 0.8%    |
| Intercontinental  | 1'190    | 1'258   | -5.4%   | 2'550      | 2'603     | -2.0%   |
| Total   | 9'949    | 10'155  | -2.0%   | 21'128     | 21'030    | 0.5%    |
| <b>Available Seat km (ASK, in millions)</b>                           |          |         |         |            |           |         |
| Europe  | 827      | 810     | 2.1%    | 1'763      | 1'677     | 5.1%    |
| Intercontinental  | 1'768    | 1'797   | -1.6%   | 3'787      | 3'710     | 2.1%    |
| Total   | 2'595    | 2'608   | -0.5%   | 5'550      | 5'388     | 3.0%    |
| <b>Revenue Passenger km (RPK, in millions)</b>                        |          |         |         |            |           |         |
| Europe  | 540      | 541     | -0.2%   | 1'133      | 1'082     | 4.7%    |
| Intercontinental  | 1'332    | 1'410   | -5.5%   | 2'894      | 2'935     | -1.4%   |
| Total   | 1'873    | 1'952   | -4.0%   | 4'027      | 4'017     | 0.3%    |
| <b>Seat Load Factor (SLF %) <sup>3)</sup></b>                         |          |         |         |            |           |         |
| Europe  | 65.3%    | 66.8%   | -1.5%P  | 64.3%      | 64.5%     | -0.2%P  |
| Intercontinental  | 75.4%    | 78.5%   | -3.1%P  | 76.4%      | 79.1%     | -2.7%P  |
| Total   | 72.2%    | 74.8%   | -2.6%P  | 72.6%      | 74.6%     | -2.0%P  |
| <b>Estimated Cargo Load Factor (%) <sup>4)</sup></b>                  |          |         |         |            |           |         |
| Total   | 70.4%    | 87.5%   | -17.1%P | 65.6%      | 83.6%     | -18.0%P |
| <b>Estimated Cargo Tonnes Kilometers (CTK, in 1000) <sup>4)</sup></b> |          |         |         |            |           |         |
| Total   | 86'599   | 104'388 | -17.0%  | 171'699    | 202'355   | -15.1%  |

<sup>1)</sup> All passengers; in accordance with Lufthansa, SWISS publishes the number of all passengers instead of revenue passengers.

<sup>2)</sup> A flight includes now all flight legs which are operated under one single flight number; intermediate stops are not considered.

<sup>3)</sup> SLF = RPK / ASK

<sup>4)</sup> Including mail

## Traffic Statistics March 2009 SWISS Scheduled Services



Swiss  
International  
Air Lines

|   | March     |           |         | Cumulative |           |         |
|---|-----------|-----------|---------|------------|-----------|---------|
|   | 2009      | 2008      |         | 2009       | 2008      |         |
| <b>Number of Passengers <sup>1)</sup></b>                             |           |           |         |            |           |         |
| Europe  | 827'492   | 858'888   | -3.7%   | 2'273'468  | 2'281'579 | -0.4%   |
| Intercontinental  | 238'629   | 260'399   | -8.4%   | 677'217    | 717'938   | -5.7%   |
| Total   | 1'066'121 | 1'119'287 | -4.7%   | 2'950'685  | 2'999'517 | -1.6%   |
| <b>Flights <sup>2)</sup></b>  |           |           |         |            |           |         |
| Europe  | 9'869     | 9'551     | 3.3%    | 28'447     | 27'978    | 1.7%    |
| Intercontinental  | 1'354     | 1'362     | -0.6%   | 3'904      | 3'965     | -1.5%   |
| Total   | 11'223    | 10'913    | 2.8%    | 32'351     | 31'943    | 1.3%    |
| <b>Available Seat km (ASK, in millions)</b>                           |           |           |         |            |           |         |
| Europe  | 943       | 894       | 5.5%    | 2'705      | 2'571     | 5.2%    |
| Intercontinental  | 2'008     | 1'941     | 3.4%    | 5'796      | 5'652     | 2.5%    |
| Total   | 2'951     | 2'835     | 4.1%    | 8'501      | 8'223     | 3.4%    |
| <b>Revenue Passenger km (RPK, in millions)</b>                        |           |           |         |            |           |         |
| Europe  | 647       | 656       | -1.3%   | 1'780      | 1'738     | 2.4%    |
| Intercontinental  | 1'548     | 1'644     | -5.8%   | 4'443      | 4'578     | -3.0%   |
| Total   | 2'196     | 2'300     | -4.5%   | 6'223      | 6'316     | -1.5%   |
| <b>Seat Load Factor (SLF %) <sup>3)</sup></b>                         |           |           |         |            |           |         |
| Europe  | 68.7%     | 73.4%     | -4.7%P  | 65.8%      | 67.6%     | -1.8%P  |
| Intercontinental  | 77.1%     | 84.7%     | -7.6%P  | 76.7%      | 81.0%     | -4.3%P  |
| Total   | 74.4%     | 81.1%     | -6.7%P  | 73.2%      | 76.8%     | -3.6%P  |
| <b>Estimated Cargo Load Factor (%) <sup>4)</sup></b>                  |           |           |         |            |           |         |
| Total   | 69.1%     | 88.1%     | -19.0%P | 66.8%      | 85.2%     | -18.4%P |
| <b>Estimated Cargo Tonnes Kilometers (CTK, in 1000) <sup>4)</sup></b> |           |           |         |            |           |         |
| Total   | 93'772    | 113'799   | -17.6%  | 265'470    | 316'153   | -16.0%  |

<sup>1)</sup> All passengers; in accordance with Lufthansa, SWISS publishes the number of all passengers instead of revenue passengers.

<sup>2)</sup> A flight includes all flight legs which are operated under one single flight number; intermediate stops are not considered.

<sup>3)</sup> SLF = RPK / ASK

<sup>4)</sup> Including mail

## Traffic Statistics April 2009 SWISS Scheduled Services



Swiss  
International  
Air Lines

|   | April     |           |         | Cumulative |           |         |
|---|-----------|-----------|---------|------------|-----------|---------|
|   | 2009      | 2008      |         | 2009       | 2008      |         |
| <b>Number of Passengers <sup>1)</sup></b>                             |           |           |         |            |           |         |
| Europe  | 921'498   | 884'642   | 4.2%    | 3'194'966  | 3'166'221 | 0.9%    |
| Intercontinental  | 237'296   | 250'331   | -5.2%   | 914'513    | 968'269   | -5.6%   |
| Total   | 1'158'794 | 1'134'973 | 2.1%    | 4'109'479  | 4'134'490 | -0.6%   |
| <b>Flights <sup>2)</sup></b>  |           |           |         |            |           |         |
| Europe  | 10'199    | 9'796     | 4.1%    | 38'646     | 37'774    | 2.3%    |
| Intercontinental  | 1'322     | 1'299     | 1.8%    | 5'226      | 5'264     | -0.7%   |
| Total   | 11'521    | 11'095    | 3.8%    | 43'872     | 43'038    | 1.9%    |
| <b>Available Seat km (ASK, in millions)</b>                           |           |           |         |            |           |         |
| Europe  | 981       | 925       | 6.0%    | 3'687      | 3'496     | 5.4%    |
| Intercontinental  | 1'939     | 1'861     | 4.2%    | 7'735      | 7'513     | 3.0%    |
| Total   | 2'921     | 2'787     | 4.8%    | 11'422     | 11'009    | 3.7%    |
| <b>Revenue Passenger km (RPK, in millions)</b>                        |           |           |         |            |           |         |
| Europe  | 729       | 682       | 6.9%    | 2'509      | 2'420     | 3.7%    |
| Intercontinental  | 1'541     | 1'579     | -2.4%   | 5'984      | 6'157     | -2.8%   |
| Total   | 2'270     | 2'261     | 0.4%    | 8'493      | 8'577     | -1.0%   |
| <b>Seat Load Factor (SLF %) <sup>3)</sup></b>                         |           |           |         |            |           |         |
| Europe  | 74.3%     | 73.7%     | 0.6%P   | 68.1%      | 69.2%     | -1.1%P  |
| Intercontinental  | 79.5%     | 84.8%     | -5.3%P  | 77.4%      | 81.9%     | -4.5%P  |
| Total   | 77.7%     | 81.1%     | -3.4%P  | 74.4%      | 77.9%     | -3.5%P  |
| <b>Estimated Cargo Load Factor (%) <sup>4)</sup></b>                  |           |           |         |            |           |         |
| Total   | 63.8%     | 84.4%     | -20.6%P | 66.0%      | 85.0%     | -19.0%P |
| <b>Estimated Cargo Tonnes Kilometers (CTK, in 1000) <sup>4)</sup></b> |           |           |         |            |           |         |
| Total   | 84'683    | 106'164   | -20.2%  | 350'154    | 422'318   | -17.1%  |

<sup>1)</sup> All passengers; in accordance with Lufthansa, SWISS publishes the number of all passengers instead of revenue passengers.

<sup>2)</sup> A flight includes all flight legs which are operated under one single flight number; intermediate stops are not considered.

<sup>3)</sup> SLF = RPK / ASK

<sup>4)</sup> Including mail

## Traffic Statistics May 2009 SWISS Scheduled Services



Swiss  
International  
Air Lines

|   | May       |           |         | Cumulative |           |         |
|---|-----------|-----------|---------|------------|-----------|---------|
|   | 2009      | 2008      |         | 2009       | 2008      |         |
| <b>Number of Passengers <sup>1)</sup></b>                             |           |           |         |            |           |         |
| Europe  | 941'802   | 917'866   | 2.6%    | 4'136'768  | 4'084'087 | 1.3%    |
| Intercontinental  | 218'136   | 259'747   | -16.0%  | 1'132'649  | 1'228'016 | -7.8%   |
| Total   | 1'159'938 | 1'177'613 | -1.5%   | 5'269'417  | 5'312'103 | -0.8%   |
| <b>Flights <sup>2)</sup></b>  |           |           |         |            |           |         |
| Europe  | 10'254    | 10'134    | 1.2%    | 48'900     | 47'908    | 2.1%    |
| Intercontinental  | 1'317     | 1'405     | -6.3%   | 6'543      | 6'669     | -1.9%   |
| Total   | 11'571    | 11'539    | 0.3%    | 55'443     | 54'577    | 1.6%    |
| <b>Available Seat km (ASK, in millions)</b>                           |           |           |         |            |           |         |
| Europe  | 988       | 974       | 1.4%    | 4'674      | 4'470     | 4.6%    |
| Intercontinental  | 1'915     | 2'028     | -5.6%   | 9'650      | 9'541     | 1.1%    |
| Total   | 2'902     | 3'001     | -3.3%   | 14'324     | 14'011    | 2.2%    |
| <b>Revenue Passenger km (RPK, in millions)</b>                        |           |           |         |            |           |         |
| Europe  | 740       | 721       | 2.6%    | 3'249      | 3'142     | 3.4%    |
| Intercontinental  | 1'444     | 1'658     | -12.9%  | 7'428      | 7'815     | -5.0%   |
| Total   | 2'183     | 2'379     | -8.2%   | 10'676     | 10'956    | -2.6%   |
| <b>Seat Load Factor (SLF %) <sup>3)</sup></b>                         |           |           |         |            |           |         |
| Europe  | 74.9%     | 74.1%     | 0.8%P   | 69.5%      | 70.3%     | -0.8%P  |
| Intercontinental  | 75.4%     | 81.8%     | -6.4%P  | 77.0%      | 81.9%     | -4.9%P  |
| Total   | 75.2%     | 79.3%     | -4.1%P  | 74.5%      | 78.2%     | -3.7%P  |
| <b>Estimated Cargo Load Factor (%) <sup>4)</sup></b>                  |           |           |         |            |           |         |
| Total   | 63.0%     | 80.7%     | -17.7%P | 65.4%      | 84.1%     | -18.7%P |
| <b>Estimated Cargo Tonnes Kilometers (CTK, in 1000) <sup>4)</sup></b> |           |           |         |            |           |         |
| Total   | 92'813    | 108'461   | -14.4%  | 442'967    | 530'779   | -16.5%  |

<sup>1)</sup> All passengers; in accordance with Lufthansa, SWISS publishes the number of all passengers instead of revenue passengers.

<sup>2)</sup> A flight includes all flight legs which are operated under one single flight number; intermediate stops are not considered.

<sup>3)</sup> SLF = RPK / ASK

<sup>4)</sup> Including mail