



Media release

Zurich Airport, 12 January 2010

SWISS's 2009 traffic results: load factors still high thanks to flexible capacity management

SWISS carried 13.8 million passengers last year, a 2.4% increase on the 13.5 million it had transported in 2008. With targeted and demand-driven capacity management practised all year, systemwide production was 1.9% below its prior-year level in available seat-kilometre (ASK) terms. Systemwide seat load factor suffered a slight year-on-year decline, from 80.3% to 80.1%. SWISS operated 136 536 flights in 2009, an increase of 1.6% on the prior-year figure.

The overall capacity reduction in 2009 was limited entirely to the SWISS *intercontinental* network, which saw a 4.8% cut in ASK terms. With long-haul traffic volume (in revenue passenger-kilometres) posting a 6.0% year-on-year decline, intercontinental seat load factor fell only slightly from the 84.2% of 2008 to 83.2%.

Seat load factor for SWISS's *European* network registered a 2.0-percentage-point increase for the year, from the 72.1% of 2008 to 74.1%. European ASK capacity was raised 4.2% in response to demand, while RPK traffic volume was a 7.0% improvement on its prior-year equivalent.

The airfreight business of *Swiss WorldCargo* benefited from the modest economic recovery seen in the fourth quarter of the year. Cargo load factor (by volume) for 2009 as a whole stood at 70.7%, a decline of 6.9 percentage points on the 77.6% of the previous year.

For the month of **December**, SWISS carried 6.7% more passengers than in the same month of 2008. A total of 1 137 014 passengers were transported (compared to 1 065 557 in the prior-year period). Seat load factor for the month rose 4.7 percentage points, from 76.3% to 81.0%. SWISS's airfreight business reported a clear improvement on the weak demand seen in the prior-year period: cargo load factor



by volume amounted to 84.1% (compared to 64.5% for December 2008).

Traffic Statistics January-December 2009
SWISS Scheduled Services

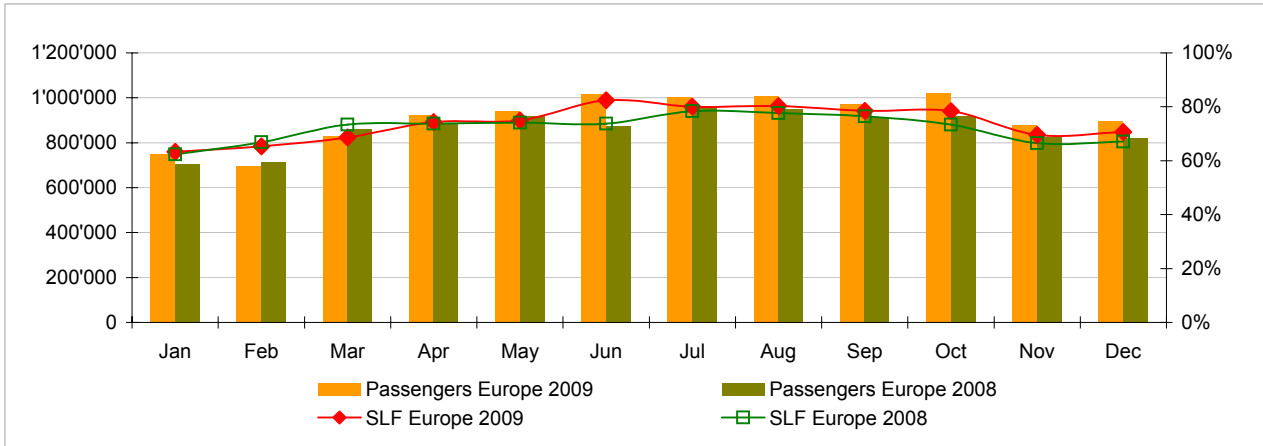


	Passengers Europe	Passengers Intercontinental	Passengers Total	SLF Europe	SLF Intercontinental	SLF Total
Jan	749'018	234'496	983'514	63.3%	77.3%	72.9%
Feb	696'958	204'092	901'050	65.3%	75.4%	72.2%
Mar	827'492	238'629	1'066'121	68.7%	77.1%	74.4%
Apr	921'498	237'296	1'158'794	74.3%	79.5%	77.7%
May	941'802	218'136	1'159'938	74.9%	75.4%	75.2%
Jun	1'014'565	230'927	1'245'492	82.4%	82.9%	82.7%
Jul	1'002'959	259'726	1'262'685	80.1%	89.8%	86.4%
Aug	1'008'781	266'778	1'275'559	80.3%	90.9%	87.3%
Sep	973'851	232'107	1'205'958	78.5%	86.8%	83.8%
Oct	1'021'214	255'277	1'276'491	78.3%	90.5%	86.2%
Nov	881'110	229'906	1'111'016	69.6%	86.3%	80.4%
Dec	897'648	239'366	1'137'014	70.7%	86.6%	81.0%

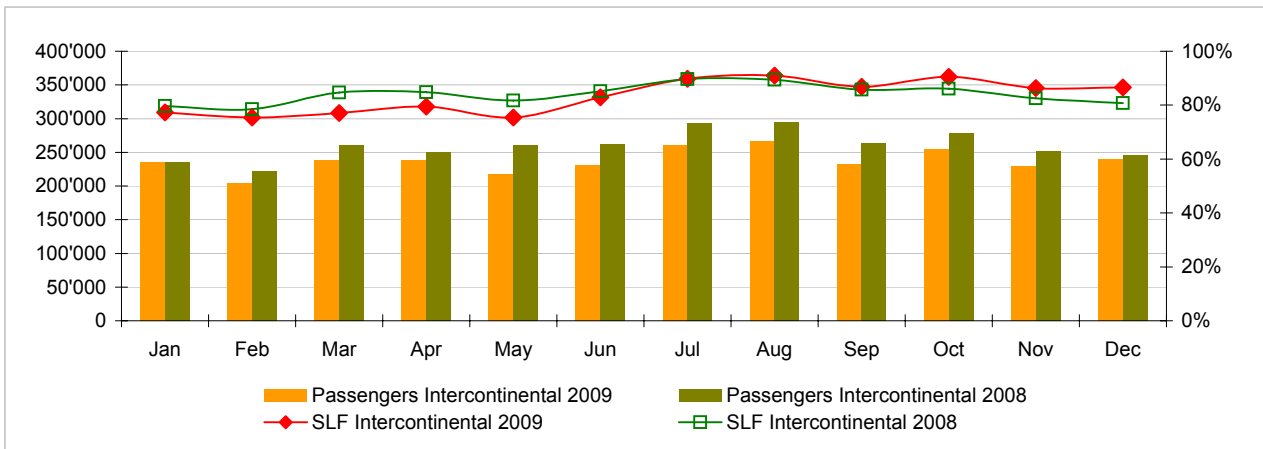
Comparison Passengers and Seat Load Factor (SLF %) versus prior year



Passengers and Seat Load Factor (SLF %) European Routes
 Comparison versus prior year



Passengers and Seat Load Factor (SLF %) Intercontinental Routes
 Comparison versus prior year



Traffic Statistics January 2009 SWISS Scheduled Services



Swiss
International
Air Lines

	January			Cumulative		
	2009	2008		2009	2008	
Number of Passengers ¹⁾						
Europe	749'018	706'543	6.0%	749'018	706'543	6.0%
Intercontinental	234'496	235'513	-0.4%	234'496	235'513	-0.4%
Total	983'514	942'056	4.4%	983'514	942'056	4.4%
Flights ²⁾						
Europe	9'819	9'530	3.0%	9'819	9'530	3.0%
Intercontinental	1'360	1'345	1.1%	1'360	1'345	1.1%
Total	11'179	10'875	2.8%	11'179	10'875	2.8%
Available Seat km (ASK, in millions)						
Europe	935	867	7.9%	935	867	7.9%
Intercontinental	2'020	1'913	5.6%	2'020	1'913	5.6%
Total	2'955	2'780	6.3%	2'955	2'780	6.3%
Revenue Passenger km (RPK, in millions)						
Europe	592	541	9.6%	592	541	9.6%
Intercontinental	1'562	1'524	2.5%	1'562	1'524	2.5%
Total	2'154	2'065	4.3%	2'154	2'065	4.3%
Seat Load Factor (SLF %) ³⁾						
Europe	63.3%	62.4%	0.9%P	63.3%	62.4%	0.9%P
Intercontinental	77.3%	79.7%	-2.4%P	77.3%	79.7%	-2.4%P
Total	72.9%	74.3%	-1.4%P	72.9%	74.3%	-1.4%P
Cargo Load Factor (%) ⁴⁾						
Total	61.4%	79.8%	-18.4%P	61.4%	79.8%	-18.4%P
Cargo Tonnes Kilometers (CTK, in 1000) ⁴⁾						
Total	85'479	97'966	-12.7%	85'479	97'966	-12.7%

¹⁾ All passengers; in accordance with Lufthansa, SWISS publishes the number of all passengers instead of revenue passengers.

²⁾ A flight includes all flight legs which are operated under one single flight number; intermediate stops are not considered.

³⁾ SLF = RPK / ASK

⁴⁾ Including mail

Traffic Statistics February 2009 SWISS Scheduled Services



Swiss
International
Air Lines

	February			Cumulative		
	2009	2008		2009	2008	
Number of Passengers ¹⁾						
Europe	696'958	716'148	-2.7%	1'445'976	1'422'691	1.6%
Intercontinental	204'092	222'026	-8.1%	438'588	457'539	-4.1%
Total	901'050	938'174	-4.0%	1'884'564	1'880'230	0.2%
Flights ²⁾						
Europe	8'759	8'897	-1.6%	18'578	18'427	0.8%
Intercontinental	1'190	1'258	-5.4%	2'550	2'603	-2.0%
Total	9'949	10'155	-2.0%	21'128	21'030	0.5%
Available Seat km (ASK, in millions)						
Europe	827	810	2.1%	1'763	1'677	5.1%
Intercontinental	1'768	1'797	-1.6%	3'787	3'710	2.1%
Total	2'595	2'608	-0.5%	5'550	5'388	3.0%
Revenue Passenger km (RPK, in millions)						
Europe	540	541	-0.2%	1'133	1'082	4.7%
Intercontinental	1'332	1'410	-5.5%	2'894	2'935	-1.4%
Total	1'873	1'952	-4.0%	4'027	4'017	0.3%
Seat Load Factor (SLF %) ³⁾						
Europe	65.3%	66.8%	-1.5%P	64.3%	64.5%	-0.2%P
Intercontinental	75.4%	78.5%	-3.1%P	76.4%	79.1%	-2.7%P
Total	72.2%	74.8%	-2.6%P	72.6%	74.6%	-2.0%P
Cargo Load Factor (%) ⁴⁾						
Total	70.4%	87.5%	-17.1%P	65.6%	83.6%	-18.0%P
Cargo Tonnes Kilometers (CTK, in 1000) ⁴⁾						
Total	87'209	104'388	-16.5%	172'687	202'355	-14.7%

¹⁾ All passengers; in accordance with Lufthansa, SWISS publishes the number of all passengers instead of revenue passengers.

²⁾ A flight includes now all flight legs which are operated under one single flight number; intermediate stops are not considered.

³⁾ SLF = RPK / ASK

⁴⁾ Including mail

Traffic Statistics March 2009 SWISS Scheduled Services



Swiss
International
Air Lines

	March			Cumulative		
	2009	2008		2009	2008	
Number of Passengers ¹⁾						
Europe	827'492	858'888	-3.7%	2'273'468	2'281'579	-0.4%
Intercontinental	238'629	260'399	-8.4%	677'217	717'938	-5.7%
Total	1'066'121	1'119'287	-4.7%	2'950'685	2'999'517	-1.6%
Flights ²⁾						
Europe	9'869	9'551	3.3%	28'447	27'978	1.7%
Intercontinental	1'354	1'362	-0.6%	3'904	3'965	-1.5%
Total	11'223	10'913	2.8%	32'351	31'943	1.3%
Available Seat km (ASK, in millions)						
Europe	943	894	5.5%	2'705	2'571	5.2%
Intercontinental	2'008	1'941	3.4%	5'796	5'652	2.5%
Total	2'951	2'835	4.1%	8'501	8'223	3.4%
Revenue Passenger km (RPK, in millions)						
Europe	647	656	-1.3%	1'780	1'738	2.4%
Intercontinental	1'548	1'644	-5.8%	4'443	4'578	-3.0%
Total	2'196	2'300	-4.5%	6'223	6'316	-1.5%
Seat Load Factor (SLF %) ³⁾						
Europe	68.7%	73.4%	-4.7%P	65.8%	67.6%	-1.8%P
Intercontinental	77.1%	84.7%	-7.6%P	76.7%	81.0%	-4.3%P
Total	74.4%	81.1%	-6.7%P	73.2%	76.8%	-3.6%P
Cargo Load Factor (%) ⁴⁾						
Total	69.1%	88.1%	-19.0%P	66.8%	85.2%	-18.4%P
Cargo Tonnes Kilometers (CTK, in 1000) ⁴⁾						
Total	96'849	113'799	-14.9%	269'536	316'153	-14.7%

¹⁾ All passengers; in accordance with Lufthansa, SWISS publishes the number of all passengers instead of revenue passengers.

²⁾ A flight includes all flight legs which are operated under one single flight number; intermediate stops are not considered.

³⁾ SLF = RPK / ASK

⁴⁾ Including mail

Traffic Statistics April 2009 SWISS Scheduled Services



Swiss
International
Air Lines

	April			Cumulative		
	2009	2008		2009	2008	
Number of Passengers ¹⁾						
Europe	921'498	884'642	4.2%	3'194'966	3'166'221	0.9%
Intercontinental	237'296	250'331	-5.2%	914'513	968'269	-5.6%
Total	1'158'794	1'134'973	2.1%	4'109'479	4'134'490	-0.6%
Flights ²⁾						
Europe	10'199	9'796	4.1%	38'646	37'774	2.3%
Intercontinental	1'322	1'299	1.8%	5'226	5'264	-0.7%
Total	11'521	11'095	3.8%	43'872	43'038	1.9%
Available Seat km (ASK, in millions)						
Europe	981	925	6.0%	3'687	3'496	5.4%
Intercontinental	1'939	1'861	4.2%	7'735	7'513	3.0%
Total	2'921	2'787	4.8%	11'422	11'009	3.7%
Revenue Passenger km (RPK, in millions)						
Europe	729	682	6.9%	2'509	2'420	3.7%
Intercontinental	1'541	1'579	-2.4%	5'984	6'157	-2.8%
Total	2'270	2'261	0.4%	8'493	8'577	-1.0%
Seat Load Factor (SLF %) ³⁾						
Europe	74.3%	73.7%	0.6%P	68.1%	69.2%	-1.1%P
Intercontinental	79.5%	84.8%	-5.3%P	77.4%	81.9%	-4.5%P
Total	77.7%	81.1%	-3.4%P	74.4%	77.9%	-3.5%P
Cargo Load Factor (%) ⁴⁾						
Total	63.8%	84.4%	-20.6%P	66.0%	85.0%	-19.0%P
Cargo Tonnes Kilometers (CTK, in 1000) ⁴⁾						
Total	85'822	106'164	-19.2%	355'358	422'318	-15.9%

¹⁾ All passengers; in accordance with Lufthansa, SWISS publishes the number of all passengers instead of revenue passengers.

²⁾ A flight includes all flight legs which are operated under one single flight number; intermediate stops are not considered.

³⁾ SLF = RPK / ASK

⁴⁾ Including mail

Traffic Statistics May 2009 SWISS Scheduled Services



Swiss
International
Air Lines

	May			Cumulative		
	2009	2008		2009	2008	
Number of Passengers ¹⁾						
Europe	941'802	917'866	2.6%	4'136'768	4'084'087	1.3%
Intercontinental	218'136	259'747	-16.0%	1'132'649	1'228'016	-7.8%
Total	1'159'938	1'177'613	-1.5%	5'269'417	5'312'103	-0.8%
Flights ²⁾						
Europe	10'254	10'134	1.2%	48'900	47'908	2.1%
Intercontinental	1'317	1'405	-6.3%	6'543	6'669	-1.9%
Total	11'571	11'539	0.3%	55'443	54'577	1.6%
Available Seat km (ASK, in millions)						
Europe	988	974	1.4%	4'674	4'470	4.6%
Intercontinental	1'915	2'028	-5.6%	9'650	9'541	1.1%
Total	2'902	3'001	-3.3%	14'324	14'011	2.2%
Revenue Passenger km (RPK, in millions)						
Europe	740	721	2.6%	3'249	3'142	3.4%
Intercontinental	1'444	1'658	-12.9%	7'428	7'815	-5.0%
Total	2'183	2'379	-8.2%	10'676	10'956	-2.6%
Seat Load Factor (SLF %) ³⁾						
Europe	74.9%	74.1%	0.8%P	69.5%	70.3%	-0.8%P
Intercontinental	75.4%	81.8%	-6.4%P	77.0%	81.9%	-4.9%P
Total	75.2%	79.3%	-4.1%P	74.5%	78.2%	-3.7%P
Cargo Load Factor (%) ⁴⁾						
Total	63.0%	80.7%	-17.7%P	65.4%	84.1%	-18.7%P
Cargo Tonnes Kilometers (CTK, in 1000) ⁴⁾						
Total	85'133	108'461	-21.5%	440'491	530'779	-17.0%

¹⁾ All passengers; in accordance with Lufthansa, SWISS publishes the number of all passengers instead of revenue passengers.

²⁾ A flight includes all flight legs which are operated under one single flight number; intermediate stops are not considered.

³⁾ SLF = RPK / ASK

⁴⁾ Including mail

Traffic Statistics June 2009 SWISS Scheduled Services



Swiss
International
Air Lines

	June			Cumulative		
	2009	2008		2009	2008	
Number of Passengers ¹⁾						
Europe	1'014'565	875'232	15.9%	5'151'333	4'959'319	3.9%
Intercontinental	230'927	261'270	-11.6%	1'363'576	1'489'286	-8.4%
Total	1'245'492	1'136'502	9.6%	6'514'909	6'448'605	1.0%
Flights ²⁾						
Europe	10'041	9'828	2.2%	58'941	57'736	2.1%
Intercontinental	1'268	1'369	-7.4%	7'811	8'038	-2.8%
Total	11'309	11'197	1.0%	66'752	65'774	1.5%
Available Seat km (ASK, in millions)						
Europe	980	937	4.6%	5'654	5'407	4.6%
Intercontinental	1'847	1'998	-7.6%	11'497	11'539	-0.4%
Total	2'827	2'935	-3.7%	17'150	16'946	1.2%
Revenue Passenger km (RPK, in millions)						
Europe	807	690	16.9%	4'056	3'832	5.8%
Intercontinental	1'531	1'702	-10.0%	8'959	9'517	-5.9%
Total	2'339	2'392	-2.2%	13'015	13'349	-2.5%
Seat Load Factor (SLF %) ³⁾						
Europe	82.4%	73.7%	8.7%P	71.7%	70.9%	0.8%P
Intercontinental	82.9%	85.2%	-2.3%P	77.9%	82.5%	-4.6%P
Total	82.7%	81.5%	1.2%P	75.9%	78.8%	-2.9%P
Cargo Load Factor (%) ⁴⁾						
Total	65.2%	83.6%	-18.4%P	65.4%	84.0%	-18.6%P
Cargo Tonnes Kilometers (CTK, in 1000) ⁴⁾						
Total	82'779	105'164	-21.3%	523'270	635'943	-17.7%

¹⁾ All passengers; in accordance with Lufthansa, SWISS publishes the number of all passengers instead of revenue passengers.

²⁾ A flight includes all flight legs which are operated under one single flight number; intermediate stops are not considered.

³⁾ SLF = RPK / ASK

⁴⁾ Including mail

Traffic Statistics July 2009 SWISS Scheduled Services



Swiss
International
Air Lines

	July			Cumulative		
	2009	2008		2009	2008	
Number of Passengers ¹⁾						
Europe	1'002'959	964'809	4.0%	6'154'292	5'924'128	3.9%
Intercontinental	259'726	292'628	-11.2%	1'623'302	1'781'914	-8.9%
Total	1'262'685	1'257'437	0.4%	7'777'594	7'706'042	0.9%
Flights ²⁾						
Europe	10'395	10'229	1.6%	69'336	67'965	2.0%
Intercontinental	1'320	1'422	-7.2%	9'131	9'460	-3.5%
Total	11'715	11'651	0.5%	78'467	77'425	1.3%
Available Seat km (ASK, in millions)						
Europe	1'026	991	3.5%	6'680	6'398	4.4%
Intercontinental	1'919	2'103	-8.7%	13'416	13'642	-1.7%
Total	2'945	3'094	-4.8%	20'096	20'040	0.3%
Revenue Passenger km (RPK, in millions)						
Europe	822	777	5.7%	4'878	4'609	5.8%
Intercontinental	1'723	1'886	-8.7%	10'682	11'402	-6.3%
Total	2'544	2'663	-4.5%	15'559	16'012	-2.8%
Seat Load Factor (SLF %) ³⁾						
Europe	80.1%	78.4%	1.7%P	73.0%	72.0%	1.0%P
Intercontinental	89.8%	89.7%	0.1%P	79.6%	83.6%	-4.0%P
Total	86.4%	86.1%	0.3%P	77.4%	79.9%	-2.5%P
Estimated Cargo Load Factor (%) ⁴⁾						
Total	68.1%	82.1%	-14.0%P	65.8%	83.7%	-17.9%P
Estimated Cargo Tonnes Kilometers (CTK, in 1000) ⁴⁾						
Total	85'287	111'233	-23.3%	608'557	747'175	-18.6%

¹⁾ All passengers; in accordance with Lufthansa, SWISS publishes the number of all passengers instead of revenue passengers.

²⁾ A flight includes all flight legs which are operated under one single flight number; intermediate stops are not considered.

³⁾ SLF = RPK / ASK

⁴⁾ Including mail

Traffic Statistics August 2009

SWISS Scheduled Services



Swiss
International
Air Lines

	August			Cumulative		
	2009	2008		2009	2008	
Number of Passengers ¹⁾						
Europe	1'008'781	948'540	6.4%	7'163'073	6'872'668	4.2%
Intercontinental	266'778	295'104	-9.6%	1'890'080	2'077'018	-9.0%
Total	1'275'559	1'243'644	2.6%	9'053'153	8'949'686	1.2%
Flights ²⁾						
Europe	10'438	10'171	2.6%	79'774	78'136	2.1%
Intercontinental	1'324	1'423	-7.0%	10'455	10'883	-3.9%
Total	11'762	11'594	1.4%	90'229	89'019	1.4%
Available Seat km (ASK, in millions)						
Europe	1'025	992	3.3%	7'705	7'391	4.3%
Intercontinental	1'942	2'108	-7.9%	15'358	15'750	-2.5%
Total	2'967	3'100	-4.3%	23'063	23'140	-0.3%
Revenue Passenger km (RPK, in millions)						
Europe	823	770	6.8%	5'701	5'380	6.0%
Intercontinental	1'766	1'886	-6.4%	12'448	13'288	-6.3%
Total	2'589	2'656	-2.5%	18'148	18'668	-2.8%
Seat Load Factor (SLF %) ³⁾						
Europe	80.3%	77.6%	2.7%P	74.0%	72.8%	1.2%P
Intercontinental	90.9%	89.5%	1.4%P	81.1%	84.4%	-3.3%P
Total	87.3%	85.7%	1.6%P	78.7%	80.7%	-2.0%P
Estimated Cargo Load Factor (%) ⁴⁾						
Total	68.2%	67.2%	1.0%P	66.1%	81.7%	-15.6%P
Estimated Cargo Tonnes Kilometers (CTK, in 1000) ⁴⁾						
Total	85'694	95'828	-10.6%	694'251	843'004	-17.6%

¹⁾ All passengers; in accordance with Lufthansa, SWISS publishes the number of all passengers instead of revenue passengers.

²⁾ A flight includes all flight legs which are operated under one single flight number; intermediate stops are not considered.

³⁾ SLF = RPK / ASK

⁴⁾ Including mail

Traffic Statistics September 2009 SWISS Scheduled Services



Swiss
International
Air Lines

	September			Cumulative		
	2009	2008		2009	2008	
Number of Passengers ¹⁾						
Europe	973'851	915'799	6.3%	8'136'924	7'788'467	4.5%
Intercontinental	232'107	262'563	-11.6%	2'122'187	2'339'581	-9.3%
Total	1'205'958	1'178'362	2.3%	10'259'111	10'128'048	1.3%
Flights ²⁾						
Europe	10'233	9'850	3.9%	90'007	87'986	2.3%
Intercontinental	1'227	1'358	-9.6%	11'682	12'241	-4.6%
Total	11'460	11'208	2.2%	101'689	100'227	1.5%
Available Seat km (ASK, in millions)						
Europe	991	945	4.9%	8'696	8'336	4.3%
Intercontinental	1'792	2'013	-11.0%	17'150	17'763	-3.5%
Total	2'783	2'958	-5.9%	25'846	26'098	-1.0%
Revenue Passenger km (RPK, in millions)						
Europe	778	723	7.6%	6'479	6'103	6.2%
Intercontinental	1'555	1'726	-9.9%	14'002	15'014	-6.7%
Total	2'333	2'449	-4.8%	20'481	21'117	-3.0%
Seat Load Factor (SLF %) ³⁾						
Europe	78.5%	76.5%	2.0%P	74.5%	73.2%	1.3%P
Intercontinental	86.8%	85.7%	1.1%P	81.6%	84.5%	-2.9%P
Total	83.8%	82.8%	1.0%P	79.2%	80.9%	-1.7%P
Estimated Cargo Load Factor (%) ⁴⁾						
Total	73.9%	69.5%	4.4%P	67.0%	80.3%	-13.3%P
Estimated Cargo Tonnes Kilometers (CTK, in 1000) ⁴⁾						
Total	85'226	99'574	-14.4%	779'477	942'577	-17.3%

¹⁾ All passengers; in accordance with Lufthansa, SWISS publishes the number of all passengers instead of revenue passengers.

²⁾ A flight includes all flight legs which are operated under one single flight number; intermediate stops are not considered.

³⁾ SLF = RPK / ASK

⁴⁾ Including mail

Traffic Statistics October 2009 SWISS Scheduled Services



Swiss
International
Air Lines

	October			Cumulative		
	2009	2008		2009	2008	
Number of Passengers ¹⁾						
Europe	1'021'214	919'924	11.0%	9'158'138	8'708'391	5.2%
Intercontinental	255'277	278'265	-8.3%	2'377'464	2'617'846	-9.2%
Total	1'276'491	1'198'189	6.5%	11'535'602	11'326'237	1.8%
Flights ²⁾						
Europe	10'638	10'206	4.2%	100'645	98'192	2.5%
Intercontinental	1'283	1'398	-8.2%	12'965	13'639	-4.9%
Total	11'921	11'604	2.7%	113'610	111'831	1.6%
Available Seat km (ASK, in millions)						
Europe	1'027	978	5.0%	9'723	9'314	4.4%
Intercontinental	1'873	2'075	-9.8%	19'022	19'838	-4.1%
Total	2'899	3'053	-5.1%	28'745	29'152	-1.4%
Revenue Passenger km (RPK, in millions)						
Europe	804	718	12.0%	7'283	6'821	6.8%
Intercontinental	1'695	1'787	-5.1%	15'697	16'801	-6.6%
Total	2'499	2'505	-0.2%	22'980	23'622	-2.7%
Seat Load Factor (SLF %) ³⁾						
Europe	78.3%	73.4%	4.9%P	74.9%	73.2%	1.7%P
Intercontinental	90.5%	86.1%	4.4%P	82.5%	84.7%	-2.2%P
Total	86.2%	82.0%	4.2%P	79.9%	81.0%	-1.1%P
Estimated Cargo Load Factor (%) ⁴⁾						
Total	78.1%	69.9%	8.2%P	68.1%	79.3%	-11.2%P
Estimated Cargo Tonnes Kilometers (CTK, in 1000) ⁴⁾						
Total	98'679	101'873	-3.1%	878'156	1'044'450	-15.9%

¹⁾ All passengers; in accordance with Lufthansa, SWISS publishes the number of all passengers instead of revenue passengers.

²⁾ A flight includes all flight legs which are operated under one single flight number; intermediate stops are not considered.

³⁾ SLF = RPK / ASK

⁴⁾ Including mail

Traffic Statistics November 2009 SWISS Scheduled Services



Swiss
International
Air Lines

	November			Cumulative		
	2009	2008		2009	2008	
Number of Passengers ¹⁾						
Europe	881'110	823'473	7.0%	10'039'248	9'531'864	5.3%
Intercontinental	229'906	251'457	-8.6%	2'607'370	2'869'303	-9.1%
Total	1'111'016	1'074'930	3.4%	12'646'618	12'401'167	2.0%
Flights ²⁾						
Europe	10'231	9'891	3.4%	110'876	108'083	2.6%
Intercontinental	1'215	1'343	-9.5%	14'180	14'982	-5.4%
Total	11'446	11'234	1.9%	125'056	123'065	1.6%
Available Seat km (ASK, in millions)						
Europe	977	947	3.1%	10'700	10'261	4.3%
Intercontinental	1'783	1'978	-9.9%	20'805	21'816	-4.6%
Total	2'759	2'925	-5.7%	31'504	32'076	-1.8%
Revenue Passenger km (RPK, in millions)						
Europe	680	630	7.9%	7'963	7'451	6.9%
Intercontinental	1'539	1'632	-5.7%	17'236	18'433	-6.5%
Total	2'219	2'262	-1.9%	25'199	25'884	-2.6%
Seat Load Factor (SLF %) ³⁾						
Europe	69.6%	66.5%	3.1%P	74.4%	72.6%	1.8%P
Intercontinental	86.3%	82.5%	3.8%P	82.8%	84.5%	-1.7%P
Total	80.4%	77.4%	3.0%P	80.0%	80.7%	-0.7%P
Estimated Cargo Load Factor (%) ⁴⁾						
Total	83.4%	73.5%	9.9%P	69.5%	78.8%	-9.3%P
Estimated Cargo Tonnes Kilometers (CTK, in 1000) ⁴⁾						
Total	103'905	97'783	6.3%	982'062	1'142'233	-14.0%

¹⁾ All passengers; in accordance with Lufthansa, SWISS publishes the number of all passengers instead of revenue passengers.

²⁾ A flight includes all flight legs which are operated under one single flight number; intermediate stops are not considered.

³⁾ SLF = RPK / ASK

⁴⁾ Including mail

Traffic Statistics December 2009 SWISS Scheduled Services



Swiss
International
Air Lines

	December			Cumulative		
	2009	2008		2009	2008	
Number of Passengers ¹⁾						
Europe	897'648	820'576	9.4%	10'936'896	10'352'440	5.6%
Intercontinental	239'366	244'981	-2.3%	2'846'736	3'114'284	-8.6%
Total	1'137'014	1'065'557	6.7%	13'783'632	13'466'724	2.4%
Flights ²⁾						
Europe	10'211	9'995	2.2%	121'087	118'078	2.5%
Intercontinental	1'269	1'341	-5.4%	15'449	16'323	-5.4%
Total	11'480	11'336	1.3%	136'536	134'401	1.6%
Available Seat km (ASK, in millions)						
Europe	995	961	3.5%	11'695	11'222	4.2%
Intercontinental	1'858	1'995	-6.9%	22'662	23'811	-4.8%
Total	2'852	2'956	-3.5%	34'357	35'032	-1.9%
Revenue Passenger km (RPK, in millions)						
Europe	703	645	9.1%	8'666	8'096	7.0%
Intercontinental	1'609	1'612	-0.2%	18'845	20'045	-6.0%
Total	2'312	2'257	2.4%	27'511	28'141	-2.2%
Seat Load Factor (SLF %) ³⁾						
Europe	70.7%	67.1%	3.6%P	74.1%	72.1%	2.0%P
Intercontinental	86.6%	80.8%	5.8%P	83.2%	84.2%	-1.0%P
Total	81.0%	76.3%	4.7%P	80.1%	80.3%	-0.2%P
Estimated Cargo Load Factor (%) ⁴⁾						
Total	84.1%	64.5%	19.6%P	70.7%	77.6%	-6.9%P
Estimated Cargo Tonnes Kilometers (CTK, in 1000) ⁴⁾						
Total	107'330	85'015	26.2%	1'089'392	1'227'249	-11.2%

¹⁾ All passengers; in accordance with Lufthansa, SWISS publishes the number of all passengers instead of revenue passengers.

²⁾ A flight includes all flight legs which are operated under one single flight number; intermediate stops are not considered.

³⁾ SLF = RPK / ASK

⁴⁾ Including mail