

SWISS traffic figures

January 2010



SWISS takes off into 2010 with encouraging load factors

SWISS achieved a systemwide seat load factor of 76.5% for the month of January. The result was a 3.6-percentage-point improvement on the 72.9% of the prior-year period. Seat load factor for intercontinental services rose 5.2 percentage points to 82.5% (January 2009: 77.3%), while seat load factor on SWISS's European network was 1.8 percentage points up at 65.1% (January 2009: 63.3%).

SWISS offered 2.5% less capacity in available-seat-kilometre terms in January 2010 than the same month last year. Total traffic volume in revenue passenger-kilometres was 2.3% up over the same period.

SWISS carried 1 050 275 passengers systemwide in January, a 6.8% increase on the 983 514 of the prior-year period. The airline operated a total of 11 590 flights for the month, 3.7% up on the 11 179 of January 2009. SWISS operated 4.9% more flights in Europe and 5.0% fewer flights on intercontinental services than in the prior-year period.

SWISS WorldCargo achieved a cargo load factor (by volume) of 76.8% for January, an improvement of 15.2 percentage points on the same month last year.

Traffic Statistics January 2010
SWISS Scheduled Services

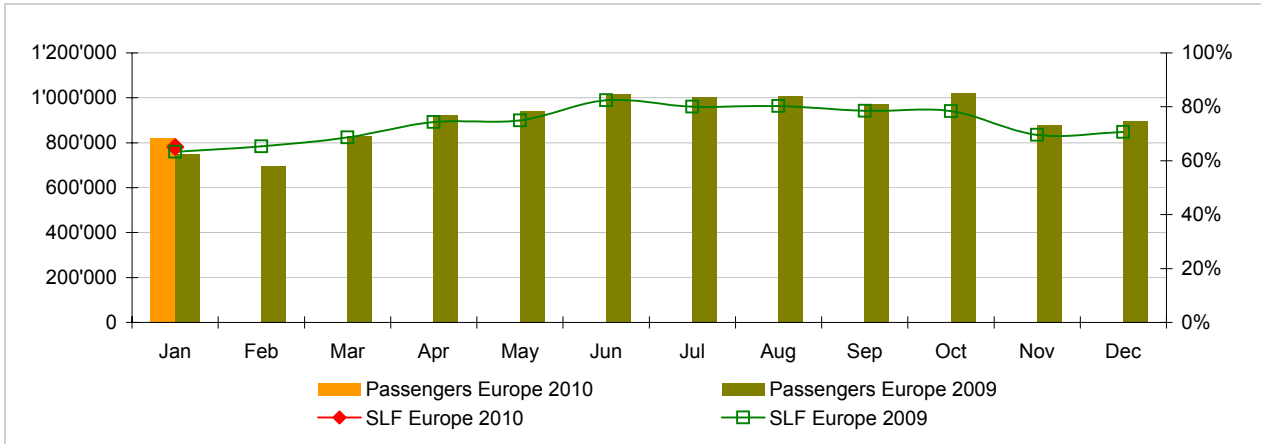


	Passengers Europe	Passengers Intercontinental	Passengers Total	SLF Europe	SLF Intercontinental	SLF Total
Jan	821'639	228'636	1'050'275	65.1%	82.5%	76.5%
Feb						
Mar						
Apr						
May						
Jun						
Jul						
Aug						
Sep						
Oct						
Nov						
Dec						

Comparison Passengers and Seat Load Factor (SLF %) versus prior year



Passengers and Seat Load Factor (SLF %) European Routes
 Comparison versus prior year



Passengers and Seat Load Factor (SLF %) Intercontinental Routes
 Comparison versus prior year



Traffic Statistics January 2010 SWISS Scheduled Services



Swiss
International
Air Lines

	January			Cumulative		
	2010	2009		2010	2009	
Number of Passengers ¹⁾						
Europe	821'639	749'018	9.7%	821'639	749'018	9.7%
Intercontinental	228'636	234'496	-2.5%	228'636	234'496	-2.5%
Total	1'050'275	983'514	6.8%	1'050'275	983'514	6.8%
Flights ²⁾						
Europe	10'298	9'819	4.9%	10'298	9'819	4.9%
Intercontinental	1'292	1'360	-5.0%	1'292	1'360	-5.0%
Total	11'590	11'179	3.7%	11'590	11'179	3.7%
Available Seat km (ASK, in millions)						
Europe	1'000	935	6.9%	1'000	935	6.9%
Intercontinental	1'882	2'020	-6.8%	1'882	2'020	-6.8%
Total	2'882	2'955	-2.5%	2'882	2'955	-2.5%
Revenue Passenger km (RPK, in millions)						
Europe	651	592	9.9%	651	592	9.9%
Intercontinental	1'553	1'562	-0.6%	1'553	1'562	-0.6%
Total	2'203	2'154	2.3%	2'203	2'154	2.3%
Seat Load Factor (SLF %) ³⁾						
Europe	65.1%	63.3%	1.8%P	65.1%	63.3%	1.8%P
Intercontinental	82.5%	77.3%	5.2%P	82.5%	77.3%	5.2%P
Total	76.5%	72.9%	3.6%P	76.5%	72.9%	3.6%P
Estimated Cargo Load Factor (%) ⁴⁾						
Total	76.6%	61.4%	15.2%P	76.6%	61.4%	15.2%P
Estimated Cargo Tonnes Kilometers (CTK, in 1000) ⁴⁾						
Total	101'413	85'479	18.6%	101'413	85'479	18.6%

¹⁾ All passengers; in accordance with Lufthansa, SWISS publishes the number of all passengers instead of revenue passengers.

²⁾ A flight includes all flight legs which are operated under one single flight number; intermediate stops are not considered.

³⁾ SLF = RPK / ASK

⁴⁾ Including mail