



Media release

Zurich Airport, 9 July 2010

SWISS raises load factors for the first half of 2010

SWISS achieved a systemwide seat load factor of 80.1% for the first half of 2010, an increase of 4.2 percentage points on the first six months of the previous year. While first-half European seat load factor remained broadly constant at 70.8% (2009: 71.7%), seat load factor for SWISS's intercontinental services rose a sizeable 7.1 percentage points to 85.0%. SWISS operated 68 833 flights in the first-half period, a 3.1% increase on the 66 752 of January-to-June 2009. Total passengers carried also rose 2.0% to 6 643 521.

Intercontinental services saw a 6.4% rise in total traffic volume in revenue-passenger-kilometre (RPK) terms. The increase was achieved despite a 2.5% decline in available-seat-kilometre (ASK) production.

On its **European services**, SWISS raised its ASK capacity by 3.9% compared to the first half of 2009. RPK traffic volumes were increased by 2.5%.

The airfreight business of **Swiss WorldCargo** registered a substantial improvement in its cargo load factor (by volume) for the first six months of 2010. The 81.8% recorded was a 16.4-percentage-point increase on the 65.4% of January-to-June last year.

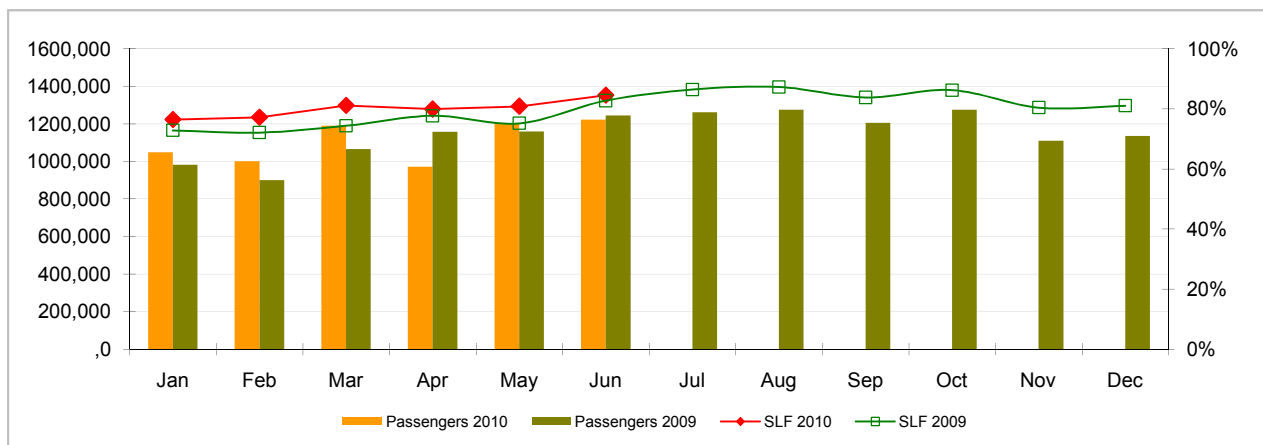
For the month of **June 2010**, SWISS recorded a systemwide seat load factor of 84.6%, a 1.9-percentage-point increase on the 82.7% of the prior-year period. European seat load factor declined to 75.6% (2009: 82.4%), while intercontinental seat load factor saw a substantial improvement to 89.1% (2009: 82.9%). SWISS carried 1 223 640 passengers in June, a slight 1.8% decline on the prior-year period (2009: 1 245 492). Swiss WorldCargo posted a cargo load factor (by volume) of 79.8%, up 14.6 percentage points on the same month last year (2009: 65.2%).

Traffic Statistics January-June 2010
SWISS Scheduled Services

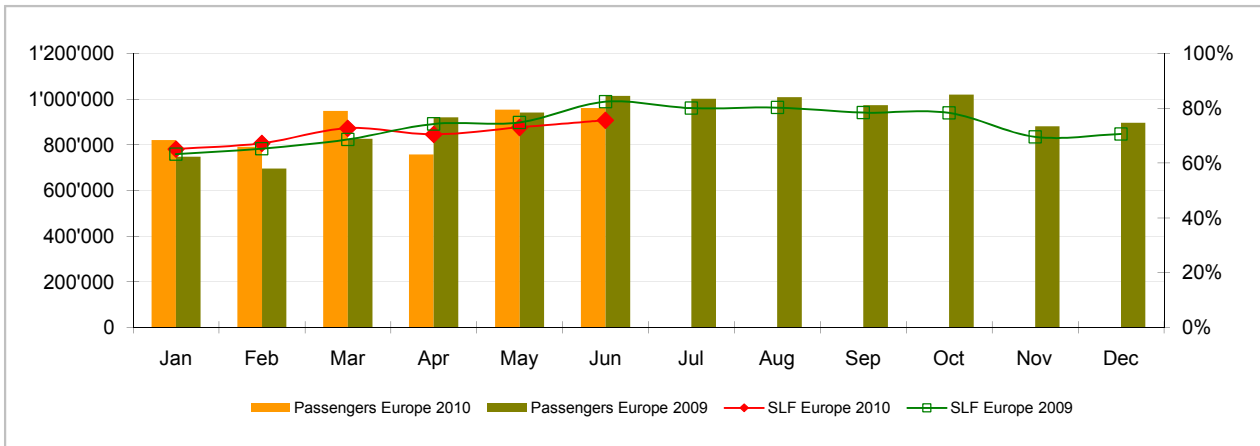


	Passengers Europe	Passengers Intercontinental	Passengers Total	SLF Europe	SLF Intercontinental	SLF Total
Jan	821'639	228'636	1'050'275	65.1%	82.5%	76.5%
Feb	792'464	209'029	1'001'493	67.2%	82.6%	77.2%
Mar	948'612	242'211	1'190'823	72.7%	85.7%	81.2%
Apr	758'414	214'194	972'608	70.5%	84.8%	80.0%
May	954'506	250'176	1'204'682	73.0%	85.0%	80.9%
Jun	961'597	262'043	1'223'640	75.6%	89.1%	84.6%
Jul						
Aug						
Sep						
Oct						
Nov						
Dec						

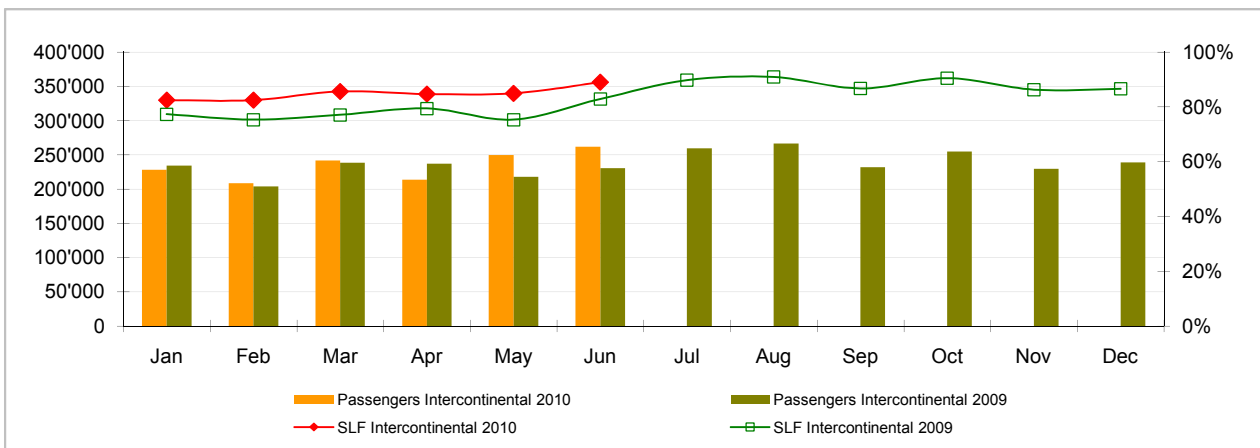
Comparison Passengers and Seat Load Factor (SLF %) versus prior year



Passengers and Seat Load Factor (SLF %) European Routes
 Comparison versus prior year



Passengers and Seat Load Factor (SLF %) Intercontinental Routes
 Comparison versus prior year



Traffic Statistics January 2010 SWISS Scheduled Services



Swiss
International
Air Lines

	January			Cumulative		
	2010	2009		2010	2009	
Number of Passengers ¹⁾						
Europe	821'639	749'018	9.7%	821'639	749'018	9.7%
Intercontinental	228'636	234'496	-2.5%	228'636	234'496	-2.5%
Total	1'050'275	983'514	6.8%	1'050'275	983'514	6.8%
Flights ²⁾						
Europe	10'298	9'819	4.9%	10'298	9'819	4.9%
Intercontinental	1'292	1'360	-5.0%	1'292	1'360	-5.0%
Total	11'590	11'179	3.7%	11'590	11'179	3.7%
Available Seat km (ASK, in millions)						
Europe	1'000	935	6.9%	1'000	935	6.9%
Intercontinental	1'882	2'020	-6.8%	1'882	2'020	-6.8%
Total	2'882	2'955	-2.5%	2'882	2'955	-2.5%
Revenue Passenger km (RPK, in millions)						
Europe	651	592	9.9%	651	592	9.9%
Intercontinental	1'553	1'562	-0.6%	1'553	1'562	-0.6%
Total	2'203	2'154	2.3%	2'203	2'154	2.3%
Seat Load Factor (SLF %) ³⁾						
Europe	65.1%	63.3%	1.8%P	65.1%	63.3%	1.8%P
Intercontinental	82.5%	77.3%	5.2%P	82.5%	77.3%	5.2%P
Total	76.5%	72.9%	3.6%P	76.5%	72.9%	3.6%P
Estimated Cargo Load Factor (%) ⁴⁾						
Total	76.6%	61.4%	15.2%P	76.6%	61.4%	15.2%P
Estimated Cargo Tonnes Kilometers (CTK, in 1000) ⁴⁾						
Total	101'413	85'479	18.6%	101'413	85'479	18.6%

¹⁾ All passengers; in accordance with Lufthansa, SWISS publishes the number of all passengers instead of revenue passengers.

²⁾ A flight includes all flight legs which are operated under one single flight number; intermediate stops are not considered.

³⁾ SLF = RPK / ASK

⁴⁾ Including mail

Traffic Statistics February 2010 SWISS Scheduled Services



Swiss
International
Air Lines

	February			Cumulative		
	2010	2009		2010	2009	
Number of Passengers ¹⁾						
Europe	792'464	696'958	13.7%	1'614'103	1'445'976	11.6%
Intercontinental	209'029	204'092	2.4%	437'665	438'588	-0.2%
Total	1'001'493	901'050	11.1%	2'051'768	1'884'564	8.9%
Flights ²⁾						
Europe	9'605	8'759	9.7%	19'903	18'578	7.1%
Intercontinental	1'150	1'190	-3.4%	2'442	2'550	-4.2%
Total	10'755	9'949	8.1%	22'345	21'128	5.8%
Available Seat km (ASK, in millions)						
Europe	913	827	10.4%	1'913	1'763	8.5%
Intercontinental	1'715	1'768	-3.0%	3'597	3'787	-5.0%
Total	2'628	2'595	1.3%	5'510	5'550	-0.7%
Revenue Passenger km (RPK, in millions)						
Europe	614	540	13.6%	1'265	1'133	11.7%
Intercontinental	1'415	1'332	6.2%	2'968	2'894	2.5%
Total	2'029	1'873	8.4%	4'233	4'027	5.1%
Seat Load Factor (SLF %) ³⁾						
Europe	67.2%	65.3%	1.9%P	66.1%	64.3%	1.8%P
Intercontinental	82.6%	75.4%	7.2%P	82.5%	76.4%	6.1%P
Total	77.2%	72.2%	5.0%P	76.8%	72.6%	4.2%P
Estimated Cargo Load Factor (%) ⁴⁾						
Total	86.0%	70.4%	15.6%P	81.0%	65.6%	15.4%P
Estimated Cargo Tonnes Kilometers (CTK, in 1000) ⁴⁾						
Total	103'759	87'209	19.0%	205'172	172'687	18.8%

¹⁾ All passengers; in accordance with Lufthansa, SWISS publishes the number of all passengers instead of revenue passengers.

²⁾ A flight includes now all flight legs which are operated under one single flight number; intermediate stops are not considered.

³⁾ SLF = RPK / ASK

⁴⁾ Including mail

Traffic Statistics March 2010 SWISS Scheduled Services



Swiss
International
Air Lines

	March			Cumulative		
	2010	2009		2010	2009	
Number of Passengers ¹⁾						
Europe	948'612	827'492	14.6%	2'562'715	2'273'468	12.7%
Intercontinental	242'211	238'629	1.5%	679'876	677'217	0.4%
Total	1'190'823	1'066'121	11.7%	3'242'591	2'950'685	9.9%
Flights ²⁾						
Europe	10'864	9'869	10.1%	30'767	28'447	8.2%
Intercontinental	1'286	1'354	-5.0%	3'728	3'904	-4.5%
Total	12'150	11'223	8.3%	34'495	32'351	6.6%
Available Seat km (ASK, in millions)						
Europe	1'024	943	8.6%	2'936	2'705	8.5%
Intercontinental	1'910	2'008	-4.9%	5'507	5'796	-5.0%
Total	2'934	2'951	-0.6%	8'443	8'501	-0.7%
Revenue Passenger km (RPK, in millions)						
Europe	744	647	15.0%	2'009	1'780	12.9%
Intercontinental	1'637	1'548	5.7%	4'605	4'443	3.7%
Total	2'381	2'196	8.4%	6'614	6'223	6.3%
Seat Load Factor (SLF %) ³⁾						
Europe	72.7%	68.7%	4.0%P	68.4%	65.8%	2.6%P
Intercontinental	85.7%	77.1%	8.6%P	83.6%	76.7%	6.9%P
Total	81.2%	74.4%	6.8%P	78.3%	73.2%	5.1%P
Estimated Cargo Load Factor (%) ⁴⁾						
Total	87.1%	69.1%	18.0%P	83.1%	66.8%	16.3%P
Estimated Cargo Tonnes Kilometers (CTK, in 1000) ⁴⁾						
Total	113'766	96'849	17.5%	318'938	269'536	18.3%

¹⁾ All passengers; in accordance with Lufthansa, SWISS publishes the number of all passengers instead of revenue passengers.

²⁾ A flight includes all flight legs which are operated under one single flight number; intermediate stops are not considered.

³⁾ SLF = RPK / ASK

⁴⁾ Including mail

Traffic Statistics April 2010 SWISS Scheduled Services



Swiss
International
Air Lines

	April			Cumulative		
	2010	2009		2010	2009	
Number of Passengers ¹⁾						
Europe	758'414	921'498	-17.7%	3'321'129	3'194'966	3.9%
Intercontinental	214'194	237'296	-9.7%	894'070	914'513	-2.2%
Total	972'608	1'158'794	-16.1%	4'215'199	4'109'479	2.6%
Flights ²⁾						
Europe	8'920	10'199	-12.5%	39'687	38'646	2.7%
Intercontinental	1'132	1'322	-14.4%	4'860	5'226	-7.0%
Total	10'052	11'521	-12.8%	44'547	43'872	1.5%
Available Seat km (ASK, in millions)						
Europe	860	981	-12.4%	3'796	3'687	3.0%
Intercontinental	1'696	1'939	-12.5%	7'204	7'735	-6.9%
Total	2'556	2'921	-12.5%	10'999	11'422	-3.7%
Revenue Passenger km (RPK, in millions)						
Europe	606	729	-16.9%	2'615	2'509	4.2%
Intercontinental	1'438	1'541	-6.7%	6'043	5'984	1.0%
Total	2'044	2'270	-10.0%	8'658	8'493	1.9%
Seat Load Factor (SLF %) ³⁾						
Europe	70.5%	74.3%	-3.8%P	68.9%	68.1%	0.8%P
Intercontinental	84.8%	79.5%	5.3%P	83.9%	77.4%	6.5%P
Total	80.0%	77.7%	2.3%P	78.7%	74.4%	4.3%P
Estimated Cargo Load Factor (%) ⁴⁾						
Total	82.4%	63.8%	18.6%P	83.0%	66.0%	17.0%P
Estimated Cargo Tonnes Kilometers (CTK, in 1000) ⁴⁾						
Total	99'817	85'822	16.3%	418'755	355'358	17.8%

¹⁾ All passengers; in accordance with Lufthansa, SWISS publishes the number of all passengers instead of revenue passengers.

²⁾ A flight includes all flight legs which are operated under one single flight number; intermediate stops are not considered.

³⁾ SLF = RPK / ASK

⁴⁾ Including mail

Traffic Statistics May 2010 SWISS Scheduled Services



Swiss
International
Air Lines

	May			Cumulative		
	2010	2009		2010	2009	
Number of Passengers ¹⁾						
Europe	954'506	941'802	1.3%	4'275'635	4'136'768	3.4%
Intercontinental	250'176	218'136	14.7%	1'144'246	1'132'649	1.0%
Total	1'204'682	1'159'938	3.9%	5'419'881	5'269'417	2.9%
Flights ²⁾						
Europe	10'928	10'254	6.6%	50'615	48'900	3.5%
Intercontinental	1'320	1'317	0.2%	6'180	6'543	-5.5%
Total	12'248	11'571	5.9%	56'795	55'443	2.4%
Available Seat km (ASK, in millions)						
Europe	1'047	988	6.0%	4'843	4'674	3.6%
Intercontinental	1'985	1'915	3.7%	9'188	9'650	-4.8%
Total	3'032	2'902	4.5%	14'031	14'324	-2.0%
Revenue Passenger km (RPK, in millions)						
Europe	765	740	3.4%	3'379	3'249	4.0%
Intercontinental	1'687	1'444	16.9%	7'730	7'428	4.1%
Total	2'452	2'183	12.3%	11'110	10'676	4.1%
Seat Load Factor (SLF %) ³⁾						
Europe	73.0%	74.9%	-1.9%P	69.8%	69.5%	0.3%P
Intercontinental	85.0%	75.4%	9.6%P	84.1%	77.0%	7.1%P
Total	80.9%	75.2%	5.7%P	79.2%	74.5%	4.7%P
Estimated Cargo Load Factor (%) ⁴⁾						
Total	79.4%	63.0%	16.4%P	82.2%	65.4%	16.8%P
Estimated Cargo Tonnes Kilometers (CTK, in 1000) ⁴⁾						
Total	117'900	85'133	38.5%	536'654	440'491	21.8%

¹⁾ All passengers; in accordance with Lufthansa, SWISS publishes the number of all passengers instead of revenue passengers.

²⁾ A flight includes all flight legs which are operated under one single flight number; intermediate stops are not considered.

³⁾ SLF = RPK / ASK

⁴⁾ Including mail

Traffic Statistics June 2010 SWISS Scheduled Services



Swiss
International
Air Lines

	June			Cumulative		
	2010	2009		2010	2009	
Number of Passengers ¹⁾						
Europe	961'597	1'014'565	-5.2%	5'237'232	5'151'333	1.7%
Intercontinental	262'043	230'927	13.5%	1'406'289	1'363'576	3.1%
Total	1'223'640	1'245'492	-1.8%	6'643'521	6'514'909	2.0%
Flights ²⁾						
Europe	10'709	10'041	6.7%	61'324	58'941	4.0%
Intercontinental	1'329	1'268	4.8%	7'509	7'811	-3.9%
Total	12'038	11'309	6.4%	68'833	66'752	3.1%
Available Seat km (ASK, in millions)						
Europe	1'031	980	5.2%	5'874	5'654	3.9%
Intercontinental	2'027	1'847	9.7%	11'215	11'497	-2.5%
Total	3'058	2'827	8.2%	17'089	17'150	-0.4%
Revenue Passenger km (RPK, in millions)						
Europe	780	807	-3.4%	4'159	4'056	2.5%
Intercontinental	1'806	1'531	17.9%	9'536	8'959	6.4%
Total	2'586	2'339	10.6%	13'696	13'015	5.2%
Seat Load Factor (SLF %) ³⁾						
Europe	75.6%	82.4%	-6.8%P	70.8%	71.7%	-0.9%P
Intercontinental	89.1%	82.9%	6.2%P	85.0%	77.9%	7.1%P
Total	84.6%	82.7%	1.9%P	80.1%	75.9%	4.2%P
Estimated Cargo Load Factor (%) ⁴⁾						
Total	79.8%	65.2%	14.6%P	81.8%	65.4%	16.4%P
Estimated Cargo Tonnes Kilometers (CTK, in 1000) ⁴⁾						
Total	110'356	82'779	33.3%	647'010	523'270	23.6%

¹⁾ All passengers; in accordance with Lufthansa, SWISS publishes the number of all passengers instead of revenue passengers.

²⁾ A flight includes all flight legs which are operated under one single flight number; intermediate stops are not considered.

³⁾ SLF = RPK / ASK

⁴⁾ Including mail