



## Media release

Zurich Airport, 12 January 2010

### **SWISS's 2009 traffic results: load factors still high thanks to flexible capacity management**

SWISS carried 13.8 million passengers last year, a 2.4% increase on the 13.5 million it had transported in 2008. With targeted and demand-driven capacity management practised all year, systemwide production was 1.9% below its prior-year level in available seat-kilometre (ASK) terms. Systemwide seat load factor suffered a slight year-on-year decline, from 80.3% to 80.1%. SWISS operated 136 536 flights in 2009, an increase of 1.6% on the prior-year figure.

The overall capacity reduction in 2009 was limited entirely to the SWISS *intercontinental* network, which saw a 4.8% cut in ASK terms. With long-haul traffic volume (in revenue passenger-kilometres) posting a 6.0% year-on-year decline, intercontinental seat load factor fell only slightly from the 84.2% of 2008 to 83.2%.

Seat load factor for SWISS's *European* network registered a 2.0-percentage-point increase for the year, from the 72.1% of 2008 to 74.1%. European ASK capacity was raised 4.2% in response to demand, while RPK traffic volume was a 7.0% improvement on its prior-year equivalent.

The airfreight business of *Swiss WorldCargo* benefited from the modest economic recovery seen in the fourth quarter of the year. Cargo load factor (by volume) for 2009 as a whole stood at 70.7%, a decline of 6.9 percentage points on the 77.6% of the previous year.



For the month of **December**, SWISS carried 6.7% more passengers than in the same month of 2008. A total of 1 137 014 passengers were transported (compared to 1 065 557 in the prior-year period). Seat load factor for the month rose 4.7 percentage points, from 76.3% to 81.0%. SWISS's airfreight business reported a clear improvement on the weak demand seen in the prior-year period: cargo load factor by volume amounted to 84.1% (compared to 64.5% for December 2008).

**Traffic Statistics January-December 2009**  
**SWISS Scheduled Services**

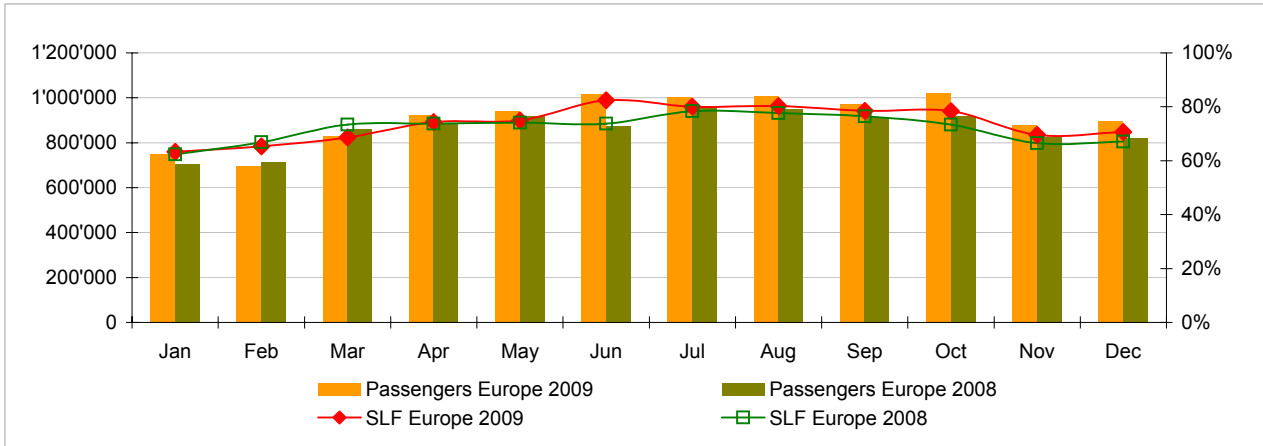


|            | Passengers Europe | Passengers Intercontinental | Passengers Total | SLF Europe | SLF Intercontinental | SLF Total    |
|------------|-------------------|-----------------------------|------------------|------------|----------------------|--------------|
| <b>Jan</b> | 749'018           | 234'496                     | <b>983'514</b>   | 63.3%      | 77.3%                | <b>72.9%</b> |
| <b>Feb</b> | 696'958           | 204'092                     | <b>901'050</b>   | 65.3%      | 75.4%                | <b>72.2%</b> |
| <b>Mar</b> | 827'492           | 238'629                     | <b>1'066'121</b> | 68.7%      | 77.1%                | <b>74.4%</b> |
| <b>Apr</b> | 921'498           | 237'296                     | <b>1'158'794</b> | 74.3%      | 79.5%                | <b>77.7%</b> |
| <b>May</b> | 941'802           | 218'136                     | <b>1'159'938</b> | 74.9%      | 75.4%                | <b>75.2%</b> |
| <b>Jun</b> | 1'014'565         | 230'927                     | <b>1'245'492</b> | 82.4%      | 82.9%                | <b>82.7%</b> |
| <b>Jul</b> | 1'002'959         | 259'726                     | <b>1'262'685</b> | 80.1%      | 89.8%                | <b>86.4%</b> |
| <b>Aug</b> | 1'008'781         | 266'778                     | <b>1'275'559</b> | 80.3%      | 90.9%                | <b>87.3%</b> |
| <b>Sep</b> | 973'851           | 232'107                     | <b>1'205'958</b> | 78.5%      | 86.8%                | <b>83.8%</b> |
| <b>Oct</b> | 1'021'214         | 255'277                     | <b>1'276'491</b> | 78.3%      | 90.5%                | <b>86.2%</b> |
| <b>Nov</b> | 881'110           | 229'906                     | <b>1'111'016</b> | 69.6%      | 86.3%                | <b>80.4%</b> |
| <b>Dec</b> | 897'648           | 239'366                     | <b>1'137'014</b> | 70.7%      | 86.6%                | <b>81.0%</b> |

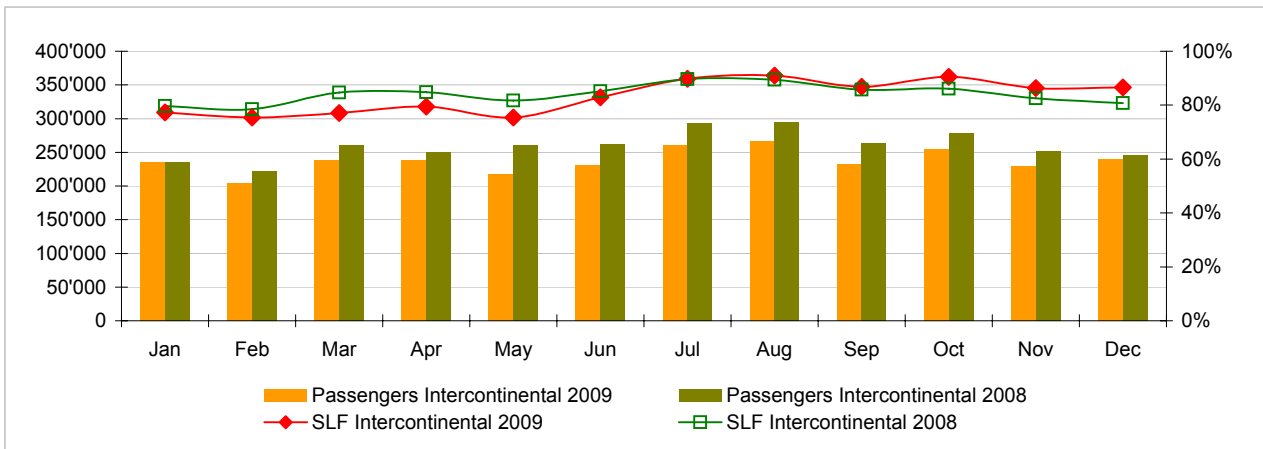
**Comparison Passengers and Seat Load Factor (SLF %) versus prior year**



**Passengers and Seat Load Factor (SLF %) European Routes**  
 Comparison versus prior year



**Passengers and Seat Load Factor (SLF %) Intercontinental Routes**  
 Comparison versus prior year



## Traffic Statistics January 2009 SWISS Scheduled Services



Swiss  
International  
Air Lines

|   | January |         |         | Cumulative |         |         |
|---|---------|---------|---------|------------|---------|---------|
|   | 2009    | 2008    |         | 2009       | 2008    |         |
| <b>Number of Passengers <sup>1)</sup></b>                   |         |         |         |            |         |         |
| Europe  | 749'018 | 706'543 | 6.0%    | 749'018    | 706'543 | 6.0%    |
| Intercontinental  | 234'496 | 235'513 | -0.4%   | 234'496    | 235'513 | -0.4%   |
| Total   | 983'514 | 942'056 | 4.4%    | 983'514    | 942'056 | 4.4%    |
| <b>Flights <sup>2)</sup></b>                                |         |         |         |            |         |         |
| Europe  | 9'819   | 9'530   | 3.0%    | 9'819      | 9'530   | 3.0%    |
| Intercontinental  | 1'360   | 1'345   | 1.1%    | 1'360      | 1'345   | 1.1%    |
| Total   | 11'179  | 10'875  | 2.8%    | 11'179     | 10'875  | 2.8%    |
| <b>Available Seat km (ASK, in millions)</b>                 |         |         |         |            |         |         |
| Europe  | 935     | 867     | 7.9%    | 935        | 867     | 7.9%    |
| Intercontinental  | 2'020   | 1'913   | 5.6%    | 2'020      | 1'913   | 5.6%    |
| Total   | 2'955   | 2'780   | 6.3%    | 2'955      | 2'780   | 6.3%    |
| <b>Revenue Passenger km (RPK, in millions)</b>              |         |         |         |            |         |         |
| Europe  | 592     | 541     | 9.6%    | 592        | 541     | 9.6%    |
| Intercontinental  | 1'562   | 1'524   | 2.5%    | 1'562      | 1'524   | 2.5%    |
| Total   | 2'154   | 2'065   | 4.3%    | 2'154      | 2'065   | 4.3%    |
| <b>Seat Load Factor (SLF %) <sup>3)</sup></b>               |         |         |         |            |         |         |
| Europe  | 63.3%   | 62.4%   | 0.9%P   | 63.3%      | 62.4%   | 0.9%P   |
| Intercontinental  | 77.3%   | 79.7%   | -2.4%P  | 77.3%      | 79.7%   | -2.4%P  |
| Total   | 72.9%   | 74.3%   | -1.4%P  | 72.9%      | 74.3%   | -1.4%P  |
| <b>Cargo Load Factor (%) <sup>4)</sup></b>                  |         |         |         |            |         |         |
| Total   | 61.4%   | 79.8%   | -18.4%P | 61.4%      | 79.8%   | -18.4%P |
| <b>Cargo Tonnes Kilometers (CTK, in 1000) <sup>4)</sup></b> |         |         |         |            |         |         |
| Total   | 85'479  | 97'966  | -12.7%  | 85'479     | 97'966  | -12.7%  |

<sup>1)</sup> All passengers; in accordance with Lufthansa, SWISS publishes the number of all passengers instead of revenue passengers.

<sup>2)</sup> A flight includes all flight legs which are operated under one single flight number; intermediate stops are not considered.

<sup>3)</sup> SLF = RPK / ASK

<sup>4)</sup> Including mail

## Traffic Statistics February 2009 SWISS Scheduled Services



Swiss  
International  
Air Lines

|   | February |         |         | Cumulative |           |         |
|---|----------|---------|---------|------------|-----------|---------|
|   | 2009     | 2008    |         | 2009       | 2008      |         |
| <b>Number of Passengers <sup>1)</sup></b>                   |          |         |         |            |           |         |
| Europe  | 696'958  | 716'148 | -2.7%   | 1'445'976  | 1'422'691 | 1.6%    |
| Intercontinental  | 204'092  | 222'026 | -8.1%   | 438'588    | 457'539   | -4.1%   |
| Total   | 901'050  | 938'174 | -4.0%   | 1'884'564  | 1'880'230 | 0.2%    |
| <b>Flights <sup>2)</sup></b>                                |          |         |         |            |           |         |
| Europe  | 8'759    | 8'897   | -1.6%   | 18'578     | 18'427    | 0.8%    |
| Intercontinental  | 1'190    | 1'258   | -5.4%   | 2'550      | 2'603     | -2.0%   |
| Total   | 9'949    | 10'155  | -2.0%   | 21'128     | 21'030    | 0.5%    |
| <b>Available Seat km (ASK, in millions)</b>                 |          |         |         |            |           |         |
| Europe  | 827      | 810     | 2.1%    | 1'763      | 1'677     | 5.1%    |
| Intercontinental  | 1'768    | 1'797   | -1.6%   | 3'787      | 3'710     | 2.1%    |
| Total   | 2'595    | 2'608   | -0.5%   | 5'550      | 5'388     | 3.0%    |
| <b>Revenue Passenger km (RPK, in millions)</b>              |          |         |         |            |           |         |
| Europe  | 540      | 541     | -0.2%   | 1'133      | 1'082     | 4.7%    |
| Intercontinental  | 1'332    | 1'410   | -5.5%   | 2'894      | 2'935     | -1.4%   |
| Total   | 1'873    | 1'952   | -4.0%   | 4'027      | 4'017     | 0.3%    |
| <b>Seat Load Factor (SLF %) <sup>3)</sup></b>               |          |         |         |            |           |         |
| Europe  | 65.3%    | 66.8%   | -1.5%P  | 64.3%      | 64.5%     | -0.2%P  |
| Intercontinental  | 75.4%    | 78.5%   | -3.1%P  | 76.4%      | 79.1%     | -2.7%P  |
| Total   | 72.2%    | 74.8%   | -2.6%P  | 72.6%      | 74.6%     | -2.0%P  |
| <b>Cargo Load Factor (%) <sup>4)</sup></b>                  |          |         |         |            |           |         |
| Total   | 70.4%    | 87.5%   | -17.1%P | 65.6%      | 83.6%     | -18.0%P |
| <b>Cargo Tonnes Kilometers (CTK, in 1000) <sup>4)</sup></b> |          |         |         |            |           |         |
| Total   | 87'209   | 104'388 | -16.5%  | 172'687    | 202'355   | -14.7%  |

<sup>1)</sup> All passengers; in accordance with Lufthansa, SWISS publishes the number of all passengers instead of revenue passengers.

<sup>2)</sup> A flight includes now all flight legs which are operated under one single flight number; intermediate stops are not considered.

<sup>3)</sup> SLF = RPK / ASK

<sup>4)</sup> Including mail

## Traffic Statistics March 2009 SWISS Scheduled Services



Swiss  
International  
Air Lines

|   | March     |           |         | Cumulative |           |         |
|---|-----------|-----------|---------|------------|-----------|---------|
|   | 2009      | 2008      |         | 2009       | 2008      |         |
| <b>Number of Passengers <sup>1)</sup></b>                   |           |           |         |            |           |         |
| Europe  | 827'492   | 858'888   | -3.7%   | 2'273'468  | 2'281'579 | -0.4%   |
| Intercontinental  | 238'629   | 260'399   | -8.4%   | 677'217    | 717'938   | -5.7%   |
| Total   | 1'066'121 | 1'119'287 | -4.7%   | 2'950'685  | 2'999'517 | -1.6%   |
| <b>Flights <sup>2)</sup></b>                                |           |           |         |            |           |         |
| Europe  | 9'869     | 9'551     | 3.3%    | 28'447     | 27'978    | 1.7%    |
| Intercontinental  | 1'354     | 1'362     | -0.6%   | 3'904      | 3'965     | -1.5%   |
| Total   | 11'223    | 10'913    | 2.8%    | 32'351     | 31'943    | 1.3%    |
| <b>Available Seat km (ASK, in millions)</b>                 |           |           |         |            |           |         |
| Europe  | 943       | 894       | 5.5%    | 2'705      | 2'571     | 5.2%    |
| Intercontinental  | 2'008     | 1'941     | 3.4%    | 5'796      | 5'652     | 2.5%    |
| Total   | 2'951     | 2'835     | 4.1%    | 8'501      | 8'223     | 3.4%    |
| <b>Revenue Passenger km (RPK, in millions)</b>              |           |           |         |            |           |         |
| Europe  | 647       | 656       | -1.3%   | 1'780      | 1'738     | 2.4%    |
| Intercontinental  | 1'548     | 1'644     | -5.8%   | 4'443      | 4'578     | -3.0%   |
| Total   | 2'196     | 2'300     | -4.5%   | 6'223      | 6'316     | -1.5%   |
| <b>Seat Load Factor (SLF %) <sup>3)</sup></b>               |           |           |         |            |           |         |
| Europe  | 68.7%     | 73.4%     | -4.7%P  | 65.8%      | 67.6%     | -1.8%P  |
| Intercontinental  | 77.1%     | 84.7%     | -7.6%P  | 76.7%      | 81.0%     | -4.3%P  |
| Total   | 74.4%     | 81.1%     | -6.7%P  | 73.2%      | 76.8%     | -3.6%P  |
| <b>Cargo Load Factor (%) <sup>4)</sup></b>                  |           |           |         |            |           |         |
| Total   | 69.1%     | 88.1%     | -19.0%P | 66.8%      | 85.2%     | -18.4%P |
| <b>Cargo Tonnes Kilometers (CTK, in 1000) <sup>4)</sup></b> |           |           |         |            |           |         |
| Total   | 96'849    | 113'799   | -14.9%  | 269'536    | 316'153   | -14.7%  |

<sup>1)</sup> All passengers; in accordance with Lufthansa, SWISS publishes the number of all passengers instead of revenue passengers.

<sup>2)</sup> A flight includes all flight legs which are operated under one single flight number; intermediate stops are not considered.

<sup>3)</sup> SLF = RPK / ASK

<sup>4)</sup> Including mail

## Traffic Statistics April 2009 SWISS Scheduled Services



Swiss  
International  
Air Lines

|   | April     |           |         | Cumulative |           |         |
|---|-----------|-----------|---------|------------|-----------|---------|
|   | 2009      | 2008      |         | 2009       | 2008      |         |
| <b>Number of Passengers <sup>1)</sup></b>                   |           |           |         |            |           |         |
| Europe  | 921'498   | 884'642   | 4.2%    | 3'194'966  | 3'166'221 | 0.9%    |
| Intercontinental  | 237'296   | 250'331   | -5.2%   | 914'513    | 968'269   | -5.6%   |
| Total   | 1'158'794 | 1'134'973 | 2.1%    | 4'109'479  | 4'134'490 | -0.6%   |
| <b>Flights <sup>2)</sup></b>                                |           |           |         |            |           |         |
| Europe  | 10'199    | 9'796     | 4.1%    | 38'646     | 37'774    | 2.3%    |
| Intercontinental  | 1'322     | 1'299     | 1.8%    | 5'226      | 5'264     | -0.7%   |
| Total   | 11'521    | 11'095    | 3.8%    | 43'872     | 43'038    | 1.9%    |
| <b>Available Seat km (ASK, in millions)</b>                 |           |           |         |            |           |         |
| Europe  | 981       | 925       | 6.0%    | 3'687      | 3'496     | 5.4%    |
| Intercontinental  | 1'939     | 1'861     | 4.2%    | 7'735      | 7'513     | 3.0%    |
| Total   | 2'921     | 2'787     | 4.8%    | 11'422     | 11'009    | 3.7%    |
| <b>Revenue Passenger km (RPK, in millions)</b>              |           |           |         |            |           |         |
| Europe  | 729       | 682       | 6.9%    | 2'509      | 2'420     | 3.7%    |
| Intercontinental  | 1'541     | 1'579     | -2.4%   | 5'984      | 6'157     | -2.8%   |
| Total   | 2'270     | 2'261     | 0.4%    | 8'493      | 8'577     | -1.0%   |
| <b>Seat Load Factor (SLF %) <sup>3)</sup></b>               |           |           |         |            |           |         |
| Europe  | 74.3%     | 73.7%     | 0.6%P   | 68.1%      | 69.2%     | -1.1%P  |
| Intercontinental  | 79.5%     | 84.8%     | -5.3%P  | 77.4%      | 81.9%     | -4.5%P  |
| Total   | 77.7%     | 81.1%     | -3.4%P  | 74.4%      | 77.9%     | -3.5%P  |
| <b>Cargo Load Factor (%) <sup>4)</sup></b>                  |           |           |         |            |           |         |
| Total   | 63.8%     | 84.4%     | -20.6%P | 66.0%      | 85.0%     | -19.0%P |
| <b>Cargo Tonnes Kilometers (CTK, in 1000) <sup>4)</sup></b> |           |           |         |            |           |         |
| Total   | 85'822    | 106'164   | -19.2%  | 355'358    | 422'318   | -15.9%  |

<sup>1)</sup> All passengers; in accordance with Lufthansa, SWISS publishes the number of all passengers instead of revenue passengers.

<sup>2)</sup> A flight includes all flight legs which are operated under one single flight number; intermediate stops are not considered.

<sup>3)</sup> SLF = RPK / ASK

<sup>4)</sup> Including mail

## Traffic Statistics May 2009 SWISS Scheduled Services



Swiss  
International  
Air Lines

|   | May       |           |         | Cumulative |           |         |
|---|-----------|-----------|---------|------------|-----------|---------|
|   | 2009      | 2008      |         | 2009       | 2008      |         |
| <b>Number of Passengers <sup>1)</sup></b>                   |           |           |         |            |           |         |
| Europe  | 941'802   | 917'866   | 2.6%    | 4'136'768  | 4'084'087 | 1.3%    |
| Intercontinental  | 218'136   | 259'747   | -16.0%  | 1'132'649  | 1'228'016 | -7.8%   |
| Total   | 1'159'938 | 1'177'613 | -1.5%   | 5'269'417  | 5'312'103 | -0.8%   |
| <b>Flights <sup>2)</sup></b>                                |           |           |         |            |           |         |
| Europe  | 10'254    | 10'134    | 1.2%    | 48'900     | 47'908    | 2.1%    |
| Intercontinental  | 1'317     | 1'405     | -6.3%   | 6'543      | 6'669     | -1.9%   |
| Total   | 11'571    | 11'539    | 0.3%    | 55'443     | 54'577    | 1.6%    |
| <b>Available Seat km (ASK, in millions)</b>                 |           |           |         |            |           |         |
| Europe  | 988       | 974       | 1.4%    | 4'674      | 4'470     | 4.6%    |
| Intercontinental  | 1'915     | 2'028     | -5.6%   | 9'650      | 9'541     | 1.1%    |
| Total   | 2'902     | 3'001     | -3.3%   | 14'324     | 14'011    | 2.2%    |
| <b>Revenue Passenger km (RPK, in millions)</b>              |           |           |         |            |           |         |
| Europe  | 740       | 721       | 2.6%    | 3'249      | 3'142     | 3.4%    |
| Intercontinental  | 1'444     | 1'658     | -12.9%  | 7'428      | 7'815     | -5.0%   |
| Total   | 2'183     | 2'379     | -8.2%   | 10'676     | 10'956    | -2.6%   |
| <b>Seat Load Factor (SLF %) <sup>3)</sup></b>               |           |           |         |            |           |         |
| Europe  | 74.9%     | 74.1%     | 0.8%P   | 69.5%      | 70.3%     | -0.8%P  |
| Intercontinental  | 75.4%     | 81.8%     | -6.4%P  | 77.0%      | 81.9%     | -4.9%P  |
| Total   | 75.2%     | 79.3%     | -4.1%P  | 74.5%      | 78.2%     | -3.7%P  |
| <b>Cargo Load Factor (%) <sup>4)</sup></b>                  |           |           |         |            |           |         |
| Total   | 63.0%     | 80.7%     | -17.7%P | 65.4%      | 84.1%     | -18.7%P |
| <b>Cargo Tonnes Kilometers (CTK, in 1000) <sup>4)</sup></b> |           |           |         |            |           |         |
| Total   | 85'133    | 108'461   | -21.5%  | 440'491    | 530'779   | -17.0%  |

<sup>1)</sup> All passengers; in accordance with Lufthansa, SWISS publishes the number of all passengers instead of revenue passengers.

<sup>2)</sup> A flight includes all flight legs which are operated under one single flight number; intermediate stops are not considered.

<sup>3)</sup> SLF = RPK / ASK

<sup>4)</sup> Including mail

## Traffic Statistics June 2009 SWISS Scheduled Services



Swiss  
International  
Air Lines

|   | June      |           |         | Cumulative |           |         |
|---|-----------|-----------|---------|------------|-----------|---------|
|   | 2009      | 2008      |         | 2009       | 2008      |         |
| <b>Number of Passengers <sup>1)</sup></b>                   |           |           |         |            |           |         |
| Europe  | 1'014'565 | 875'232   | 15.9%   | 5'151'333  | 4'959'319 | 3.9%    |
| Intercontinental  | 230'927   | 261'270   | -11.6%  | 1'363'576  | 1'489'286 | -8.4%   |
| Total   | 1'245'492 | 1'136'502 | 9.6%    | 6'514'909  | 6'448'605 | 1.0%    |
| <b>Flights <sup>2)</sup></b>                                |           |           |         |            |           |         |
| Europe  | 10'041    | 9'828     | 2.2%    | 58'941     | 57'736    | 2.1%    |
| Intercontinental  | 1'268     | 1'369     | -7.4%   | 7'811      | 8'038     | -2.8%   |
| Total   | 11'309    | 11'197    | 1.0%    | 66'752     | 65'774    | 1.5%    |
| <b>Available Seat km (ASK, in millions)</b>                 |           |           |         |            |           |         |
| Europe  | 980       | 937       | 4.6%    | 5'654      | 5'407     | 4.6%    |
| Intercontinental  | 1'847     | 1'998     | -7.6%   | 11'497     | 11'539    | -0.4%   |
| Total   | 2'827     | 2'935     | -3.7%   | 17'150     | 16'946    | 1.2%    |
| <b>Revenue Passenger km (RPK, in millions)</b>              |           |           |         |            |           |         |
| Europe  | 807       | 690       | 16.9%   | 4'056      | 3'832     | 5.8%    |
| Intercontinental  | 1'531     | 1'702     | -10.0%  | 8'959      | 9'517     | -5.9%   |
| Total   | 2'339     | 2'392     | -2.2%   | 13'015     | 13'349    | -2.5%   |
| <b>Seat Load Factor (SLF %) <sup>3)</sup></b>               |           |           |         |            |           |         |
| Europe  | 82.4%     | 73.7%     | 8.7%P   | 71.7%      | 70.9%     | 0.8%P   |
| Intercontinental  | 82.9%     | 85.2%     | -2.3%P  | 77.9%      | 82.5%     | -4.6%P  |
| Total   | 82.7%     | 81.5%     | 1.2%P   | 75.9%      | 78.8%     | -2.9%P  |
| <b>Cargo Load Factor (%) <sup>4)</sup></b>                  |           |           |         |            |           |         |
| Total   | 65.2%     | 83.6%     | -18.4%P | 65.4%      | 84.0%     | -18.6%P |
| <b>Cargo Tonnes Kilometers (CTK, in 1000) <sup>4)</sup></b> |           |           |         |            |           |         |
| Total   | 82'779    | 105'164   | -21.3%  | 523'270    | 635'943   | -17.7%  |

<sup>1)</sup> All passengers; in accordance with Lufthansa, SWISS publishes the number of all passengers instead of revenue passengers.

<sup>2)</sup> A flight includes all flight legs which are operated under one single flight number; intermediate stops are not considered.

<sup>3)</sup> SLF = RPK / ASK

<sup>4)</sup> Including mail

## Traffic Statistics July 2009 SWISS Scheduled Services



Swiss  
International  
Air Lines

|   | July      |           |         | Cumulative |           |         |
|---|-----------|-----------|---------|------------|-----------|---------|
|   | 2009      | 2008      |         | 2009       | 2008      |         |
| <b>Number of Passengers <sup>1)</sup></b>                   |           |           |         |            |           |         |
| Europe  | 1'002'959 | 964'809   | 4.0%    | 6'154'292  | 5'924'128 | 3.9%    |
| Intercontinental  | 259'726   | 292'628   | -11.2%  | 1'623'302  | 1'781'914 | -8.9%   |
| Total   | 1'262'685 | 1'257'437 | 0.4%    | 7'777'594  | 7'706'042 | 0.9%    |
| <b>Flights <sup>2)</sup></b>                                |           |           |         |            |           |         |
| Europe  | 10'395    | 10'229    | 1.6%    | 69'336     | 67'965    | 2.0%    |
| Intercontinental  | 1'320     | 1'422     | -7.2%   | 9'131      | 9'460     | -3.5%   |
| Total   | 11'715    | 11'651    | 0.5%    | 78'467     | 77'425    | 1.3%    |
| <b>Available Seat km (ASK, in millions)</b>                 |           |           |         |            |           |         |
| Europe  | 1'026     | 991       | 3.5%    | 6'680      | 6'398     | 4.4%    |
| Intercontinental  | 1'919     | 2'103     | -8.7%   | 13'416     | 13'642    | -1.7%   |
| Total   | 2'945     | 3'094     | -4.8%   | 20'096     | 20'040    | 0.3%    |
| <b>Revenue Passenger km (RPK, in millions)</b>              |           |           |         |            |           |         |
| Europe  | 822       | 777       | 5.7%    | 4'878      | 4'609     | 5.8%    |
| Intercontinental  | 1'723     | 1'886     | -8.7%   | 10'682     | 11'402    | -6.3%   |
| Total   | 2'544     | 2'663     | -4.5%   | 15'559     | 16'012    | -2.8%   |
| <b>Seat Load Factor (SLF %) <sup>3)</sup></b>               |           |           |         |            |           |         |
| Europe  | 80.1%     | 78.4%     | 1.7%P   | 73.0%      | 72.0%     | 1.0%P   |
| Intercontinental  | 89.8%     | 89.7%     | 0.1%P   | 79.6%      | 83.6%     | -4.0%P  |
| Total   | 86.4%     | 86.1%     | 0.3%P   | 77.4%      | 79.9%     | -2.5%P  |
| <b>Cargo Load Factor (%) <sup>4)</sup></b>                  |           |           |         |            |           |         |
| Total   | 68.1%     | 82.1%     | -14.0%P | 65.8%      | 83.7%     | -17.9%P |
| <b>Cargo Tonnes Kilometers (CTK, in 1000) <sup>4)</sup></b> |           |           |         |            |           |         |
| Total   | 84'058    | 111'233   | -24.4%  | 607'328    | 747'175   | -18.7%  |

<sup>1)</sup> All passengers; in accordance with Lufthansa, SWISS publishes the number of all passengers instead of revenue passengers.

<sup>2)</sup> A flight includes all flight legs which are operated under one single flight number; intermediate stops are not considered.

<sup>3)</sup> SLF = RPK / ASK

<sup>4)</sup> Including mail

## Traffic Statistics August 2009 SWISS Scheduled Services



Swiss  
International  
Air Lines

|   | August    |           |        | Cumulative |           |         |
|---|-----------|-----------|--------|------------|-----------|---------|
|   | 2009      | 2008      |        | 2009       | 2008      |         |
| <b>Number of Passengers <sup>1)</sup></b>                   |           |           |        |            |           |         |
| Europe  | 1'008'781 | 948'540   | 6.4%   | 7'163'073  | 6'872'668 | 4.2%    |
| Intercontinental  | 266'778   | 295'104   | -9.6%  | 1'890'080  | 2'077'018 | -9.0%   |
| Total   | 1'275'559 | 1'243'644 | 2.6%   | 9'053'153  | 8'949'686 | 1.2%    |
| <b>Flights <sup>2)</sup></b>                                |           |           |        |            |           |         |
| Europe  | 10'438    | 10'171    | 2.6%   | 79'774     | 78'136    | 2.1%    |
| Intercontinental  | 1'324     | 1'423     | -7.0%  | 10'455     | 10'883    | -3.9%   |
| Total   | 11'762    | 11'594    | 1.4%   | 90'229     | 89'019    | 1.4%    |
| <b>Available Seat km (ASK, in millions)</b>                 |           |           |        |            |           |         |
| Europe  | 1'025     | 992       | 3.3%   | 7'705      | 7'391     | 4.3%    |
| Intercontinental  | 1'942     | 2'108     | -7.9%  | 15'358     | 15'750    | -2.5%   |
| Total   | 2'967     | 3'100     | -4.3%  | 23'063     | 23'140    | -0.3%   |
| <b>Revenue Passenger km (RPK, in millions)</b>              |           |           |        |            |           |         |
| Europe  | 823       | 770       | 6.8%   | 5'701      | 5'380     | 6.0%    |
| Intercontinental  | 1'766     | 1'886     | -6.4%  | 12'448     | 13'288    | -6.3%   |
| Total   | 2'589     | 2'656     | -2.5%  | 18'148     | 18'668    | -2.8%   |
| <b>Seat Load Factor (SLF %) <sup>3)</sup></b>               |           |           |        |            |           |         |
| Europe  | 80.3%     | 77.6%     | 2.7%P  | 74.0%      | 72.8%     | 1.2%P   |
| Intercontinental  | 90.9%     | 89.5%     | 1.4%P  | 81.1%      | 84.4%     | -3.3%P  |
| Total   | 87.3%     | 85.7%     | 1.6%P  | 78.7%      | 80.7%     | -2.0%P  |
| <b>Cargo Load Factor (%) <sup>4)</sup></b>                  |           |           |        |            |           |         |
| Total   | 68.2%     | 67.2%     | 1.0%P  | 66.1%      | 81.7%     | -15.6%P |
| <b>Cargo Tonnes Kilometers (CTK, in 1000) <sup>4)</sup></b> |           |           |        |            |           |         |
| Total   | 85'162    | 95'828    | -11.1% | 692'490    | 843'004   | -17.9%  |

<sup>1)</sup> All passengers; in accordance with Lufthansa, SWISS publishes the number of all passengers instead of revenue passengers.

<sup>2)</sup> A flight includes all flight legs which are operated under one single flight number; intermediate stops are not considered.

<sup>3)</sup> SLF = RPK / ASK

<sup>4)</sup> Including mail

## Traffic Statistics September 2009 SWISS Scheduled Services



Swiss  
International  
Air Lines

|   | September |           |        | Cumulative |            |         |
|---|-----------|-----------|--------|------------|------------|---------|
|   | 2009      | 2008      |        | 2009       | 2008       |         |
| <b>Number of Passengers <sup>1)</sup></b>                   |           |           |        |            |            |         |
| Europe  | 973'851   | 915'799   | 6.3%   | 8'136'924  | 7'788'467  | 4.5%    |
| Intercontinental  | 232'107   | 262'563   | -11.6% | 2'122'187  | 2'339'581  | -9.3%   |
| Total   | 1'205'958 | 1'178'362 | 2.3%   | 10'259'111 | 10'128'048 | 1.3%    |
| <b>Flights <sup>2)</sup></b>                                |           |           |        |            |            |         |
| Europe  | 10'233    | 9'850     | 3.9%   | 90'007     | 87'986     | 2.3%    |
| Intercontinental  | 1'227     | 1'358     | -9.6%  | 11'682     | 12'241     | -4.6%   |
| Total   | 11'460    | 11'208    | 2.2%   | 101'689    | 100'227    | 1.5%    |
| <b>Available Seat km (ASK, in millions)</b>                 |           |           |        |            |            |         |
| Europe  | 991       | 945       | 4.9%   | 8'696      | 8'336      | 4.3%    |
| Intercontinental  | 1'792     | 2'013     | -11.0% | 17'150     | 17'763     | -3.5%   |
| Total   | 2'783     | 2'958     | -5.9%  | 25'846     | 26'098     | -1.0%   |
| <b>Revenue Passenger km (RPK, in millions)</b>              |           |           |        |            |            |         |
| Europe  | 778       | 723       | 7.6%   | 6'479      | 6'103      | 6.2%    |
| Intercontinental  | 1'555     | 1'726     | -9.9%  | 14'002     | 15'014     | -6.7%   |
| Total   | 2'333     | 2'449     | -4.8%  | 20'481     | 21'117     | -3.0%   |
| <b>Seat Load Factor (SLF %) <sup>3)</sup></b>               |           |           |        |            |            |         |
| Europe  | 78.5%     | 76.5%     | 2.0%P  | 74.5%      | 73.2%      | 1.3%P   |
| Intercontinental  | 86.8%     | 85.7%     | 1.1%P  | 81.6%      | 84.5%      | -2.9%P  |
| Total   | 83.8%     | 82.8%     | 1.0%P  | 79.2%      | 80.9%      | -1.7%P  |
| <b>Cargo Load Factor (%) <sup>4)</sup></b>                  |           |           |        |            |            |         |
| Total   | 73.9%     | 69.5%     | 4.4%P  | 67.0%      | 80.3%      | -13.3%P |
| <b>Cargo Tonnes Kilometers (CTK, in 1000) <sup>4)</sup></b> |           |           |        |            |            |         |
| Total   | 87'982    | 99'574    | -11.6% | 780'472    | 942'577    | -17.2%  |

<sup>1)</sup> All passengers; in accordance with Lufthansa, SWISS publishes the number of all passengers instead of revenue passengers.

<sup>2)</sup> A flight includes all flight legs which are operated under one single flight number; intermediate stops are not considered.

<sup>3)</sup> SLF = RPK / ASK

<sup>4)</sup> Including mail

## Traffic Statistics October 2009 SWISS Scheduled Services



Swiss  
International  
Air Lines

|   | October   |           |       | Cumulative |            |         |
|---|-----------|-----------|-------|------------|------------|---------|
|   | 2009      | 2008      |       | 2009       | 2008       |         |
| <b>Number of Passengers <sup>1)</sup></b>                   |           |           |       |            |            |         |
| Europe  | 1'021'214 | 919'924   | 11.0% | 9'158'138  | 8'708'391  | 5.2%    |
| Intercontinental  | 255'277   | 278'265   | -8.3% | 2'377'464  | 2'617'846  | -9.2%   |
| Total   | 1'276'491 | 1'198'189 | 6.5%  | 11'535'602 | 11'326'237 | 1.8%    |
| <b>Flights <sup>2)</sup></b>                                |           |           |       |            |            |         |
| Europe  | 10'638    | 10'206    | 4.2%  | 100'645    | 98'192     | 2.5%    |
| Intercontinental  | 1'283     | 1'398     | -8.2% | 12'965     | 13'639     | -4.9%   |
| Total   | 11'921    | 11'604    | 2.7%  | 113'610    | 111'831    | 1.6%    |
| <b>Available Seat km (ASK, in millions)</b>                 |           |           |       |            |            |         |
| Europe  | 1'027     | 978       | 5.0%  | 9'723      | 9'314      | 4.4%    |
| Intercontinental  | 1'873     | 2'075     | -9.8% | 19'022     | 19'838     | -4.1%   |
| Total   | 2'899     | 3'053     | -5.1% | 28'745     | 29'152     | -1.4%   |
| <b>Revenue Passenger km (RPK, in millions)</b>              |           |           |       |            |            |         |
| Europe  | 804       | 718       | 12.0% | 7'283      | 6'821      | 6.8%    |
| Intercontinental  | 1'695     | 1'787     | -5.1% | 15'697     | 16'801     | -6.6%   |
| Total   | 2'499     | 2'505     | -0.2% | 22'980     | 23'622     | -2.7%   |
| <b>Seat Load Factor (SLF %) <sup>3)</sup></b>               |           |           |       |            |            |         |
| Europe  | 78.3%     | 73.4%     | 4.9%P | 74.9%      | 73.2%      | 1.7%P   |
| Intercontinental  | 90.5%     | 86.1%     | 4.4%P | 82.5%      | 84.7%      | -2.2%P  |
| Total   | 86.2%     | 82.0%     | 4.2%P | 79.9%      | 81.0%      | -1.1%P  |
| <b>Cargo Load Factor (%) <sup>4)</sup></b>                  |           |           |       |            |            |         |
| Total   | 78.1%     | 69.9%     | 8.2%P | 68.1%      | 79.3%      | -11.2%P |
| <b>Cargo Tonnes Kilometers (CTK, in 1000) <sup>4)</sup></b> |           |           |       |            |            |         |
| Total   | 98'031    | 101'873   | -3.8% | 878'502    | 1'044'450  | -15.9%  |

<sup>1)</sup> All passengers; in accordance with Lufthansa, SWISS publishes the number of all passengers instead of revenue passengers.

<sup>2)</sup> A flight includes all flight legs which are operated under one single flight number; intermediate stops are not considered.

<sup>3)</sup> SLF = RPK / ASK

<sup>4)</sup> Including mail

## Traffic Statistics November 2009 SWISS Scheduled Services



Swiss  
International  
Air Lines

|   | November  |           |       | Cumulative |            |        |
|---|-----------|-----------|-------|------------|------------|--------|
|   | 2009      | 2008      |       | 2009       | 2008       |        |
| <b>Number of Passengers <sup>1)</sup></b>                   |           |           |       |            |            |        |
| Europe  | 881'110   | 823'473   | 7.0%  | 10'039'248 | 9'531'864  | 5.3%   |
| Intercontinental  | 229'906   | 251'457   | -8.6% | 2'607'370  | 2'869'303  | -9.1%  |
| Total   | 1'111'016 | 1'074'930 | 3.4%  | 12'646'618 | 12'401'167 | 2.0%   |
| <b>Flights <sup>2)</sup></b>                                |           |           |       |            |            |        |
| Europe  | 10'231    | 9'891     | 3.4%  | 110'876    | 108'083    | 2.6%   |
| Intercontinental  | 1'215     | 1'343     | -9.5% | 14'180     | 14'982     | -5.4%  |
| Total   | 11'446    | 11'234    | 1.9%  | 125'056    | 123'065    | 1.6%   |
| <b>Available Seat km (ASK, in millions)</b>                 |           |           |       |            |            |        |
| Europe  | 977       | 947       | 3.1%  | 10'700     | 10'261     | 4.3%   |
| Intercontinental  | 1'783     | 1'978     | -9.9% | 20'805     | 21'816     | -4.6%  |
| Total   | 2'759     | 2'925     | -5.7% | 31'504     | 32'076     | -1.8%  |
| <b>Revenue Passenger km (RPK, in millions)</b>              |           |           |       |            |            |        |
| Europe  | 680       | 630       | 7.9%  | 7'963      | 7'451      | 6.9%   |
| Intercontinental  | 1'539     | 1'632     | -5.7% | 17'236     | 18'433     | -6.5%  |
| Total   | 2'219     | 2'262     | -1.9% | 25'199     | 25'884     | -2.6%  |
| <b>Seat Load Factor (SLF %) <sup>3)</sup></b>               |           |           |       |            |            |        |
| Europe  | 69.6%     | 66.5%     | 3.1%P | 74.4%      | 72.6%      | 1.8%P  |
| Intercontinental  | 86.3%     | 82.5%     | 3.8%P | 82.8%      | 84.5%      | -1.7%P |
| Total   | 80.4%     | 77.4%     | 3.0%P | 80.0%      | 80.7%      | -0.7%P |
| <b>Cargo Load Factor (%) <sup>4)</sup></b>                  |           |           |       |            |            |        |
| Total   | 83.4%     | 73.5%     | 9.9%P | 69.5%      | 78.8%      | -9.3%P |
| <b>Cargo Tonnes Kilometers (CTK, in 1000) <sup>4)</sup></b> |           |           |       |            |            |        |
| Total   | 104'011   | 97'783    | 6.4%  | 982'514    | 1'142'233  | -14.0% |

<sup>1)</sup> All passengers; in accordance with Lufthansa, SWISS publishes the number of all passengers instead of revenue passengers.

<sup>2)</sup> A flight includes all flight legs which are operated under one single flight number; intermediate stops are not considered.

<sup>3)</sup> SLF = RPK / ASK

<sup>4)</sup> Including mail

## Traffic Statistics December 2009 SWISS Scheduled Services



Swiss  
International  
Air Lines

|   | December  |           |        | Cumulative |            |        |
|---|-----------|-----------|--------|------------|------------|--------|
|   | 2009      | 2008      |        | 2009       | 2008       |        |
| <b>Number of Passengers <sup>1)</sup></b>                   |           |           |        |            |            |        |
| Europe  | 897'648   | 820'576   | 9.4%   | 10'936'896 | 10'352'440 | 5.6%   |
| Intercontinental  | 239'366   | 244'981   | -2.3%  | 2'846'736  | 3'114'284  | -8.6%  |
| Total   | 1'137'014 | 1'065'557 | 6.7%   | 13'783'632 | 13'466'724 | 2.4%   |
| <b>Flights <sup>2)</sup></b>                                |           |           |        |            |            |        |
| Europe  | 10'211    | 9'995     | 2.2%   | 121'087    | 118'078    | 2.5%   |
| Intercontinental  | 1'269     | 1'341     | -5.4%  | 15'449     | 16'323     | -5.4%  |
| Total   | 11'480    | 11'336    | 1.3%   | 136'536    | 134'401    | 1.6%   |
| <b>Available Seat km (ASK, in millions)</b>                 |           |           |        |            |            |        |
| Europe  | 995       | 961       | 3.5%   | 11'695     | 11'222     | 4.2%   |
| Intercontinental  | 1'858     | 1'995     | -6.9%  | 22'662     | 23'811     | -4.8%  |
| Total   | 2'852     | 2'956     | -3.5%  | 34'357     | 35'032     | -1.9%  |
| <b>Revenue Passenger km (RPK, in millions)</b>              |           |           |        |            |            |        |
| Europe  | 703       | 645       | 9.1%   | 8'666      | 8'096      | 7.0%   |
| Intercontinental  | 1'609     | 1'612     | -0.2%  | 18'845     | 20'045     | -6.0%  |
| Total   | 2'312     | 2'257     | 2.4%   | 27'511     | 28'141     | -2.2%  |
| <b>Seat Load Factor (SLF %) <sup>3)</sup></b>               |           |           |        |            |            |        |
| Europe  | 70.7%     | 67.1%     | 3.6%P  | 74.1%      | 72.1%      | 2.0%P  |
| Intercontinental  | 86.6%     | 80.8%     | 5.8%P  | 83.2%      | 84.2%      | -1.0%P |
| Total   | 81.0%     | 76.3%     | 4.7%P  | 80.1%      | 80.3%      | -0.2%P |
| <b>Cargo Load Factor (%) <sup>4)</sup></b>                  |           |           |        |            |            |        |
| Total   | 84.1%     | 64.5%     | 19.6%P | 70.7%      | 77.6%      | -6.9%P |
| <b>Cargo Tonnes Kilometers (CTK, in 1000) <sup>4)</sup></b> |           |           |        |            |            |        |
| Total   | 105'865   | 85'015    | 24.5%  | 1'088'378  | 1'227'249  | -11.3% |

<sup>1)</sup> All passengers; in accordance with Lufthansa, SWISS publishes the number of all passengers instead of revenue passengers.

<sup>2)</sup> A flight includes all flight legs which are operated under one single flight number; intermediate stops are not considered.

<sup>3)</sup> SLF = RPK / ASK

<sup>4)</sup> Including mail