

SWISS traffic figures

April 2010



Airspace closures severely depress April traffic volumes

SWISS carried 16.1% fewer passengers in April than in the same month last year. The reason for the substantial volume decline was the closure for several days of European airspace areas following the Icelandic volcanic eruption. A total of 972 608 customers travelled with SWISS last month, compared to 1 158 794 in April 2009. Despite offering an expanded timetable, SWISS conducted 12.8% fewer flights: 10 052 in April 2010 compared to 11 521 the previous year.

Seat load factors remained high, however. Systemwide seat load factor for April amounted to 80.0%, up 2.3 percentage points from the prior-year period (2009: 77.7%). Intercontinental seat load factor rose 5.3 percentage points to 84.8% (2009: 79.5%). Seat load factor for SWISS's European network stood at 70.5%, down 3.8 percentage points (2009: 74.3%). The slight decline here is due largely to the weaker loadings during and immediately after the gradual reopening of Europe's airspace areas.

The impact of the volcanic eruption can also be clearly seen in April capacity figures: total production for the month in available-seat-kilometre terms was a substantial 12.5% below its prior-year level. Total traffic volume in revenue passenger-kilometres showed a 10.0% decline.

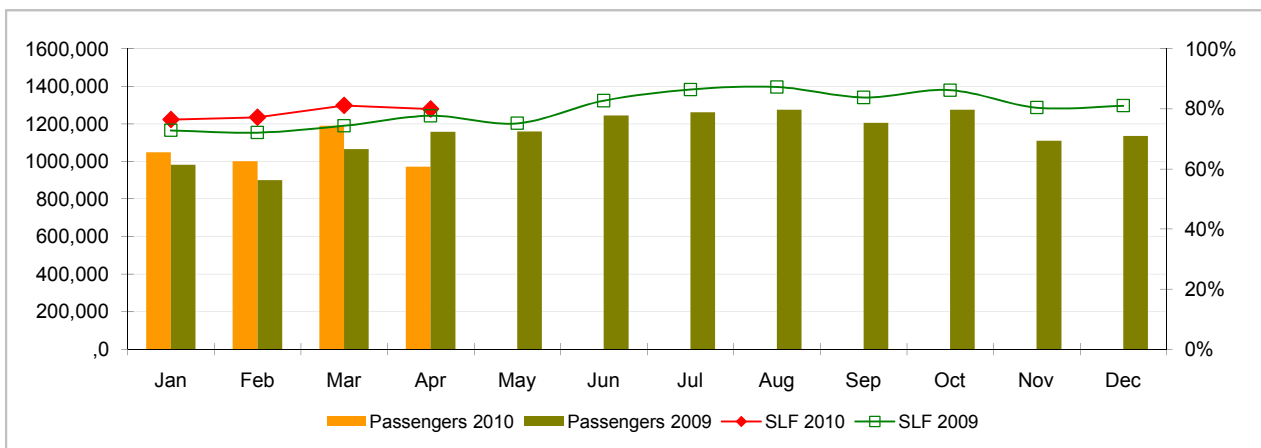
SWISS WorldCargo posted a cargo load factor (by volume) for April of 82.2%. The result was a sizeable 18.4-percentage-point improvement on the prior-year period (2009: 63.8%).

Traffic Statistics January-April 2010
SWISS Scheduled Services

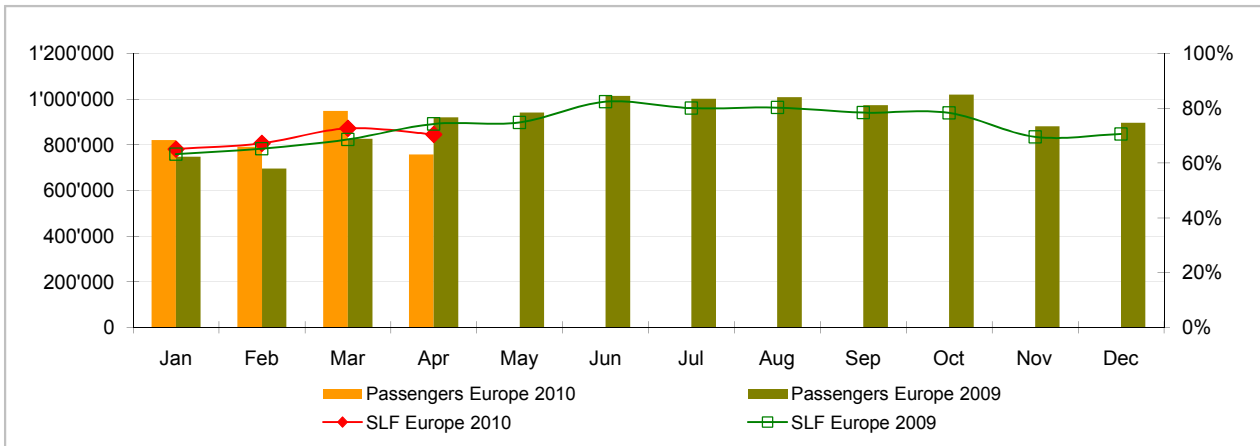


	Passengers Europe	Passengers Intercontinental	Passengers Total	SLF Europe	SLF Intercontinental	SLF Total
Jan	821'639	228'636	1'050'275	65.1%	82.5%	76.5%
Feb	792'464	209'029	1'001'493	67.2%	82.6%	77.2%
Mar	948'612	242'211	1'190'823	72.7%	85.7%	81.2%
Apr	758'414	214'194	972'608	70.5%	84.8%	80.0%
May						
Jun						
Jul						
Aug						
Sep						
Oct						
Nov						
Dec						

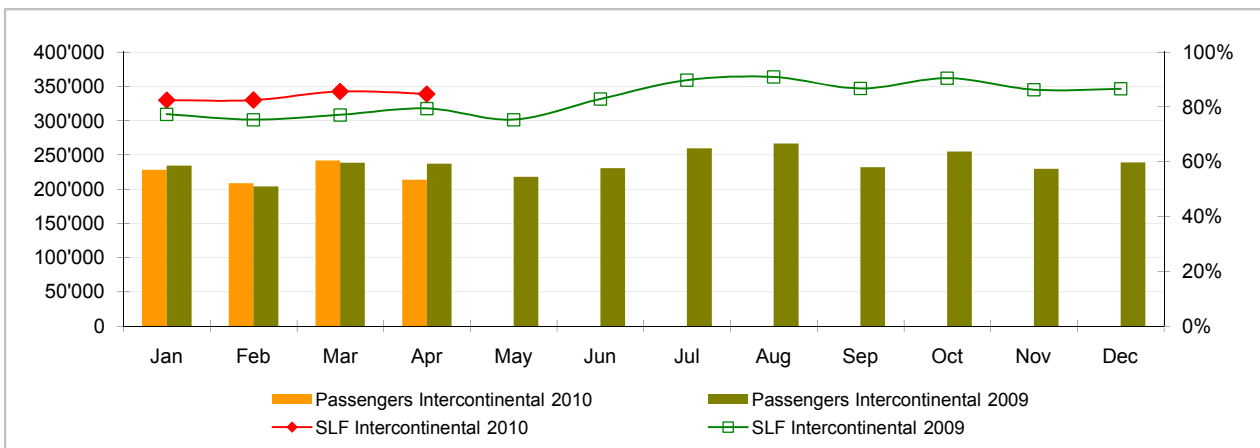
Comparison Passengers and Seat Load Factor (SLF %) versus prior year



Passengers and Seat Load Factor (SLF %) European Routes
 Comparison versus prior year



Passengers and Seat Load Factor (SLF %) Intercontinental Routes
 Comparison versus prior year



Traffic Statistics January 2010 SWISS Scheduled Services



Swiss
International
Air Lines

	January			Cumulative		
	2010	2009		2010	2009	
Number of Passengers ¹⁾						
Europe	821'639	749'018	9.7%	821'639	749'018	9.7%
Intercontinental	228'636	234'496	-2.5%	228'636	234'496	-2.5%
Total	1'050'275	983'514	6.8%	1'050'275	983'514	6.8%
Flights ²⁾						
Europe	10'298	9'819	4.9%	10'298	9'819	4.9%
Intercontinental	1'292	1'360	-5.0%	1'292	1'360	-5.0%
Total	11'590	11'179	3.7%	11'590	11'179	3.7%
Available Seat km (ASK, in millions)						
Europe	1'000	935	6.9%	1'000	935	6.9%
Intercontinental	1'882	2'020	-6.8%	1'882	2'020	-6.8%
Total	2'882	2'955	-2.5%	2'882	2'955	-2.5%
Revenue Passenger km (RPK, in millions)						
Europe	651	592	9.9%	651	592	9.9%
Intercontinental	1'553	1'562	-0.6%	1'553	1'562	-0.6%
Total	2'203	2'154	2.3%	2'203	2'154	2.3%
Seat Load Factor (SLF %) ³⁾						
Europe	65.1%	63.3%	1.8%P	65.1%	63.3%	1.8%P
Intercontinental	82.5%	77.3%	5.2%P	82.5%	77.3%	5.2%P
Total	76.5%	72.9%	3.6%P	76.5%	72.9%	3.6%P
Estimated Cargo Load Factor (%) ⁴⁾						
Total	76.6%	61.4%	15.2%P	76.6%	61.4%	15.2%P
Estimated Cargo Tonnes Kilometers (CTK, in 1000) ⁴⁾						
Total	101'413	85'479	18.6%	101'413	85'479	18.6%

¹⁾ All passengers; in accordance with Lufthansa, SWISS publishes the number of all passengers instead of revenue passengers.

²⁾ A flight includes all flight legs which are operated under one single flight number; intermediate stops are not considered.

³⁾ SLF = RPK / ASK

⁴⁾ Including mail

Traffic Statistics February 2010 SWISS Scheduled Services



Swiss
International
Air Lines

	February			Cumulative		
	2010	2009		2010	2009	
Number of Passengers ¹⁾						
Europe	792'464	696'958	13.7%	1'614'103	1'445'976	11.6%
Intercontinental	209'029	204'092	2.4%	437'665	438'588	-0.2%
Total	1'001'493	901'050	11.1%	2'051'768	1'884'564	8.9%
Flights ²⁾						
Europe	9'605	8'759	9.7%	19'903	18'578	7.1%
Intercontinental	1'150	1'190	-3.4%	2'442	2'550	-4.2%
Total	10'755	9'949	8.1%	22'345	21'128	5.8%
Available Seat km (ASK, in millions)						
Europe	913	827	10.4%	1'913	1'763	8.5%
Intercontinental	1'715	1'768	-3.0%	3'597	3'787	-5.0%
Total	2'628	2'595	1.3%	5'510	5'550	-0.7%
Revenue Passenger km (RPK, in millions)						
Europe	614	540	13.6%	1'265	1'133	11.7%
Intercontinental	1'415	1'332	6.2%	2'968	2'894	2.5%
Total	2'029	1'873	8.4%	4'233	4'027	5.1%
Seat Load Factor (SLF %) ³⁾						
Europe	67.2%	65.3%	1.9%P	66.1%	64.3%	1.8%P
Intercontinental	82.6%	75.4%	7.2%P	82.5%	76.4%	6.1%P
Total	77.2%	72.2%	5.0%P	76.8%	72.6%	4.2%P
Estimated Cargo Load Factor (%) ⁴⁾						
Total	86.0%	70.4%	15.6%P	81.0%	65.6%	15.4%P
Estimated Cargo Tonnes Kilometers (CTK, in 1000) ⁴⁾						
Total	103'759	87'209	19.0%	205'172	172'687	18.8%

¹⁾ All passengers; in accordance with Lufthansa, SWISS publishes the number of all passengers instead of revenue passengers.

²⁾ A flight includes now all flight legs which are operated under one single flight number; intermediate stops are not considered.

³⁾ SLF = RPK / ASK

⁴⁾ Including mail

Traffic Statistics March 2010 SWISS Scheduled Services



Swiss
International
Air Lines

	March			Cumulative		
	2010	2009		2010	2009	
Number of Passengers ¹⁾						
Europe	948'612	827'492	14.6%	2'562'715	2'273'468	12.7%
Intercontinental	242'211	238'629	1.5%	679'876	677'217	0.4%
Total	1'190'823	1'066'121	11.7%	3'242'591	2'950'685	9.9%
Flights ²⁾						
Europe	10'864	9'869	10.1%	30'767	28'447	8.2%
Intercontinental	1'286	1'354	-5.0%	3'728	3'904	-4.5%
Total	12'150	11'223	8.3%	34'495	32'351	6.6%
Available Seat km (ASK, in millions)						
Europe	1'024	943	8.6%	2'936	2'705	8.5%
Intercontinental	1'910	2'008	-4.9%	5'507	5'796	-5.0%
Total	2'934	2'951	-0.6%	8'443	8'501	-0.7%
Revenue Passenger km (RPK, in millions)						
Europe	744	647	15.0%	2'009	1'780	12.9%
Intercontinental	1'637	1'548	5.7%	4'605	4'443	3.7%
Total	2'381	2'196	8.4%	6'614	6'223	6.3%
Seat Load Factor (SLF %) ³⁾						
Europe	72.7%	68.7%	4.0%P	68.4%	65.8%	2.6%P
Intercontinental	85.7%	77.1%	8.6%P	83.6%	76.7%	6.9%P
Total	81.2%	74.4%	6.8%P	78.3%	73.2%	5.1%P
Estimated Cargo Load Factor (%) ⁴⁾						
Total	87.1%	69.1%	18.0%P	83.1%	66.8%	16.3%P
Estimated Cargo Tonnes Kilometers (CTK, in 1000) ⁴⁾						
Total	113'766	96'849	17.5%	318'938	269'536	18.3%

¹⁾ All passengers; in accordance with Lufthansa, SWISS publishes the number of all passengers instead of revenue passengers.

²⁾ A flight includes all flight legs which are operated under one single flight number; intermediate stops are not considered.

³⁾ SLF = RPK / ASK

⁴⁾ Including mail

Traffic Statistics April 2010 SWISS Scheduled Services



Swiss
International
Air Lines

	April			Cumulative		
	2010	2009		2010	2009	
Number of Passengers ¹⁾						
Europe	758'414	921'498	-17.7%	3'321'129	3'194'966	3.9%
Intercontinental	214'194	237'296	-9.7%	894'070	914'513	-2.2%
Total	972'608	1'158'794	-16.1%	4'215'199	4'109'479	2.6%
Flights ²⁾						
Europe	8'920	10'199	-12.5%	39'687	38'646	2.7%
Intercontinental	1'132	1'322	-14.4%	4'860	5'226	-7.0%
Total	10'052	11'521	-12.8%	44'547	43'872	1.5%
Available Seat km (ASK, in millions)						
Europe	860	981	-12.4%	3'796	3'687	3.0%
Intercontinental	1'696	1'939	-12.5%	7'204	7'735	-6.9%
Total	2'556	2'921	-12.5%	10'999	11'422	-3.7%
Revenue Passenger km (RPK, in millions)						
Europe	606	729	-16.9%	2'615	2'509	4.2%
Intercontinental	1'438	1'541	-6.7%	6'043	5'984	1.0%
Total	2'044	2'270	-10.0%	8'658	8'493	1.9%
Seat Load Factor (SLF %) ³⁾						
Europe	70.5%	74.3%	-3.8%P	68.9%	68.1%	0.8%P
Intercontinental	84.8%	79.5%	5.3%P	83.9%	77.4%	6.5%P
Total	80.0%	77.7%	2.3%P	78.7%	74.4%	4.3%P
Estimated Cargo Load Factor (%) ⁴⁾						
Total	82.2%	63.8%	18.4%P	82.9%	66.0%	16.9%P
Estimated Cargo Tonnes Kilometers (CTK, in 1000) ⁴⁾						
Total	99'817	85'822	16.3%	418'755	355'358	17.8%

¹⁾ All passengers; in accordance with Lufthansa, SWISS publishes the number of all passengers instead of revenue passengers.

²⁾ A flight includes all flight legs which are operated under one single flight number; intermediate stops are not considered.

³⁾ SLF = RPK / ASK

⁴⁾ Including mail