

SWISS traffic figures

February 2010



SWISS posts strong February load factors

SWISS reports a systemwide seat load factor of 77.2% for the month of February, a five-percentage-point improvement on the 72.2% of the same month last year. Seat load factor on intercontinental services rose 7.2 percentage points to 82.6% (2009: 75.4%), while seat load factor for SWISS's European network was up 1.9 percentage points at 67.2% (2009: 65.3%). SWISS carried 1 001 493 passengers in the course of the month, an 11.1% increase on the 901 050 passengers of February 2009.

Total production for the month in available seat-kilometres was a slight 1.3% increase on the prior-year period. SWISS operated 9.7% more flights in Europe, while the number of intercontinental flights operated declined by 3.4%. All in all, SWISS performed 10 755 flights, an 8.1% increase on the 9 949 of February 2009.

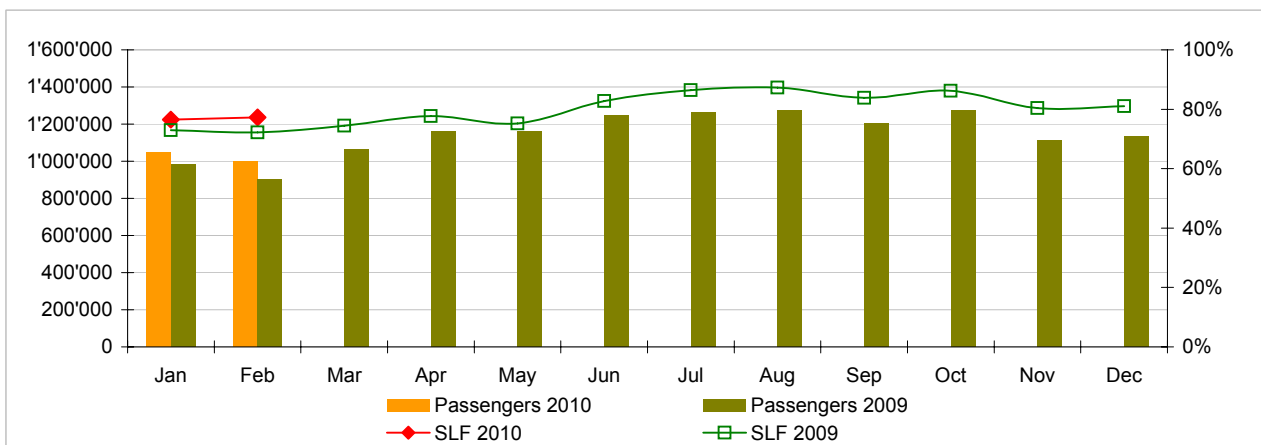
SWISS WorldCargo achieved a cargo load factor (by volume) of 85.9% for February 2010. The result was a 15.5-percentage-point improvement on the 70.4% of the same month last year.

Traffic Statistics January-February 2010
SWISS Scheduled Services

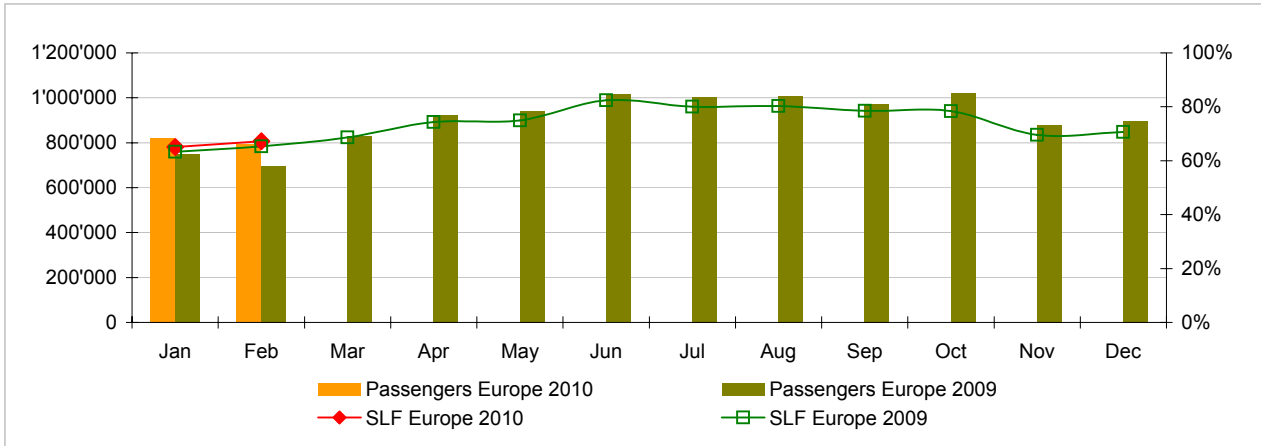


	Passengers Europe	Passengers Intercontinental	Passengers Total	SLF Europe	SLF Intercontinental	SLF Total
Jan	821'639	228'636	1'050'275	65.1%	82.5%	76.5%
Feb	792'464	209'029	1'001'493	67.2%	82.6%	77.2%
Mar						
Apr						
May						
Jun						
Jul						
Aug						
Sep						
Oct						
Nov						
Dec						

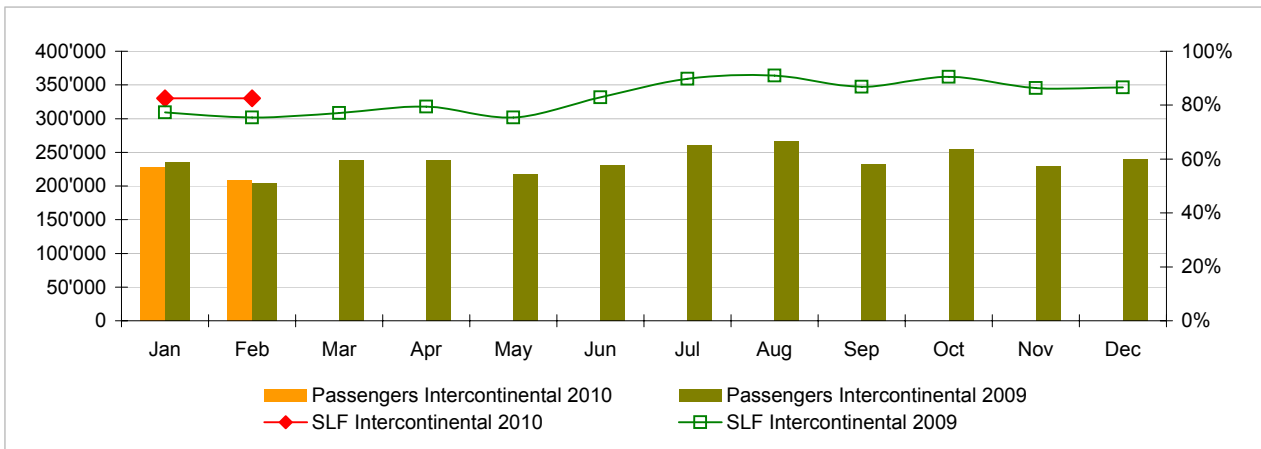
Comparison Passengers and Seat Load Factor (SLF %) versus prior year



Passengers and Seat Load Factor (SLF %) European Routes
 Comparison versus prior year



Passengers and Seat Load Factor (SLF %) Intercontinental Routes
 Comparison versus prior year



Traffic Statistics January 2010 SWISS Scheduled Services



Swiss
International
Air Lines

	January			Cumulative		
	2010	2009		2010	2009	
Number of Passengers ¹⁾						
Europe	821'639	749'018	9.7%	821'639	749'018	9.7%
Intercontinental	228'636	234'496	-2.5%	228'636	234'496	-2.5%
Total	1'050'275	983'514	6.8%	1'050'275	983'514	6.8%
Flights ²⁾						
Europe	10'298	9'819	4.9%	10'298	9'819	4.9%
Intercontinental	1'292	1'360	-5.0%	1'292	1'360	-5.0%
Total	11'590	11'179	3.7%	11'590	11'179	3.7%
Available Seat km (ASK, in millions)						
Europe	1'000	935	6.9%	1'000	935	6.9%
Intercontinental	1'882	2'020	-6.8%	1'882	2'020	-6.8%
Total	2'882	2'955	-2.5%	2'882	2'955	-2.5%
Revenue Passenger km (RPK, in millions)						
Europe	651	592	9.9%	651	592	9.9%
Intercontinental	1'553	1'562	-0.6%	1'553	1'562	-0.6%
Total	2'203	2'154	2.3%	2'203	2'154	2.3%
Seat Load Factor (SLF %) ³⁾						
Europe	65.1%	63.3%	1.8%P	65.1%	63.3%	1.8%P
Intercontinental	82.5%	77.3%	5.2%P	82.5%	77.3%	5.2%P
Total	76.5%	72.9%	3.6%P	76.5%	72.9%	3.6%P
Estimated Cargo Load Factor (%) ⁴⁾						
Total	76.6%	61.4%	15.2%P	76.6%	61.4%	15.2%P
Estimated Cargo Tonnes Kilometers (CTK, in 1000) ⁴⁾						
Total	101'413	85'479	18.6%	101'413	85'479	18.6%

¹⁾ All passengers; in accordance with Lufthansa, SWISS publishes the number of all passengers instead of revenue passengers.

²⁾ A flight includes all flight legs which are operated under one single flight number; intermediate stops are not considered.

³⁾ SLF = RPK / ASK

⁴⁾ Including mail

Traffic Statistics February 2010 SWISS Scheduled Services



Swiss
International
Air Lines

	February			Cumulative		
	2010	2009		2010	2009	
Number of Passengers ¹⁾						
Europe	792'464	696'958	13.7%	1'614'103	1'445'976	11.6%
Intercontinental	209'029	204'092	2.4%	437'665	438'588	-0.2%
Total	1'001'493	901'050	11.1%	2'051'768	1'884'564	8.9%
Flights ²⁾						
Europe	9'605	8'759	9.7%	19'903	18'578	7.1%
Intercontinental	1'150	1'190	-3.4%	2'442	2'550	-4.2%
Total	10'755	9'949	8.1%	22'345	21'128	5.8%
Available Seat km (ASK, in millions)						
Europe	913	827	10.4%	1'913	1'763	8.5%
Intercontinental	1'715	1'768	-3.0%	3'597	3'787	-5.0%
Total	2'628	2'595	1.3%	5'510	5'550	-0.7%
Revenue Passenger km (RPK, in millions)						
Europe	614	540	13.6%	1'265	1'133	11.7%
Intercontinental	1'415	1'332	6.2%	2'968	2'894	2.5%
Total	2'029	1'873	8.4%	4'233	4'027	5.1%
Seat Load Factor (SLF %) ³⁾						
Europe	67.2%	65.3%	1.9%P	66.1%	64.3%	1.8%P
Intercontinental	82.6%	75.4%	7.2%P	82.5%	76.4%	6.1%P
Total	77.2%	72.2%	5.0%P	76.8%	72.6%	4.2%P
Estimated Cargo Load Factor (%) ⁴⁾						
Total	85.9%	70.4%	15.5%P	81.0%	65.6%	15.4%P
Estimated Cargo Tonnes Kilometers (CTK, in 1000) ⁴⁾						
Total	103'759	87'209	19.0%	205'172	172'687	18.8%

¹⁾ All passengers; in accordance with Lufthansa, SWISS publishes the number of all passengers instead of revenue passengers.

²⁾ A flight includes now all flight legs which are operated under one single flight number; intermediate stops are not considered.

³⁾ SLF = RPK / ASK

⁴⁾ Including mail