



Media release

Zurich Airport, 13 April 2010

SWISS maintains favourable load factors for the first-quarter period

SWISS carried 3 242 591 passengers in the first three months of 2010, a 9.9% increase on the 2 950 685 of the prior-year period. Systemwide seat load factor for the first quarter stood at 78.3%, a 5.1-percentage-point improvement on the 73.2% of January-to-March 2009. With the company continuing to align capacity closely to demand, total production for the period was a slight 0.7% below its prior-year equivalent.

Total first-quarter traffic volume on SWISS's *intercontinental services* was a 3.7% improvement on the prior-year period in revenue passenger-kilometre (RPK) terms. The increase was also achieved on available seat-kilometre (ASK) capacity that was 5.0% below its prior-year level. Intercontinental seat load factor rose substantially as a result, to 83.6% (2009: 76.7%).

First-quarter ASK capacity for SWISS's *European network* was 8.5% above its prior-year level. With RPK traffic volume up 12.9% year-on-year, European seat load factor rose 2.6 percentage points to 68.4% (2009: 65.8%).

The airfreight business of *Swiss WorldCargo* reports a tangible 16.3-percentage-point improvement in its cargo load factor (by volume) for the first-quarter period, which stood at 83.1% (Q1 2009: 66.8%).

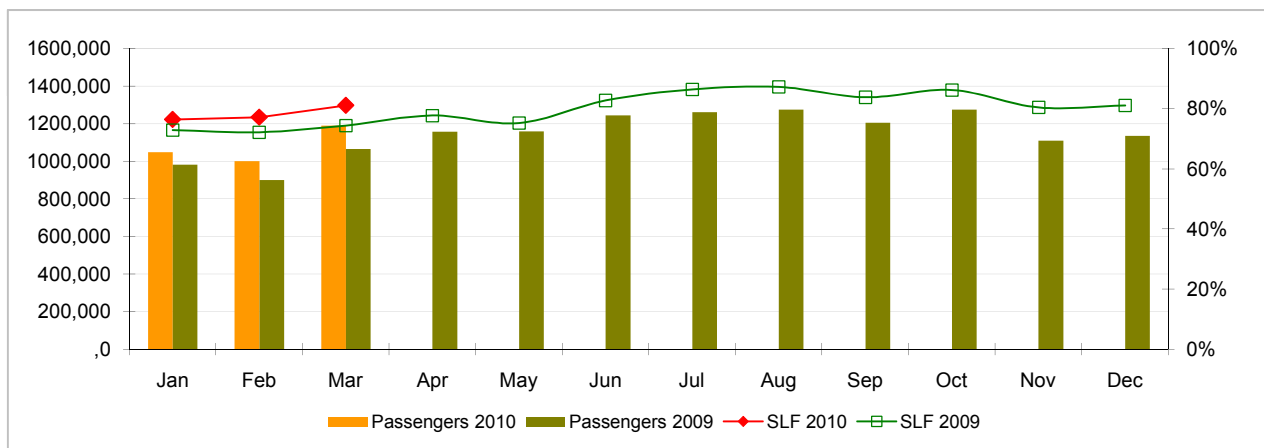
SWISS's systemwide seat load factor for **March** amounted to 81.2%, a 6.8-percentage-point increase on the 74.4% of the same month last year. European seat load factor for the month stood at 72.7% (2009: 68.7%), while intercontinental seat load factor amounted to 85.7% (2009: 77.1%). SWISS carried 1 190 823 passengers in the month, an 11.7% increase on the same period last year (2009: 1 066 121).

Traffic Statistics January-March 2010
SWISS Scheduled Services

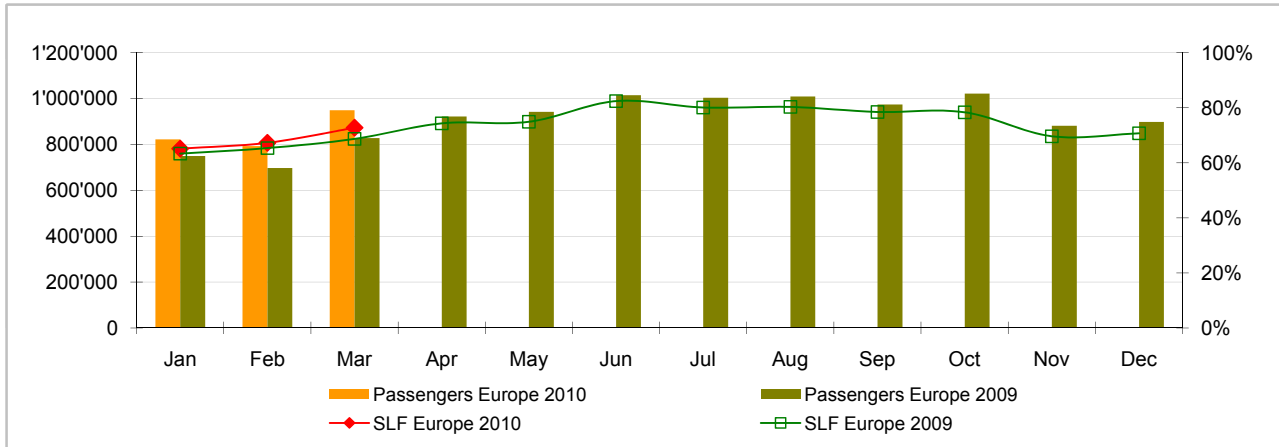


	Passengers Europe	Passengers Intercontinental	Passengers Total	SLF Europe	SLF Intercontinental	SLF Total
Jan	821'639	228'636	1'050'275	65.1%	82.5%	76.5%
Feb	792'464	209'029	1'001'493	67.2%	82.6%	77.2%
Mar	948'612	242'211	1'190'823	72.7%	85.7%	81.2%
Apr						
May						
Jun						
Jul						
Aug						
Sep						
Oct						
Nov						
Dec						

Comparison Passengers and Seat Load Factor (SLF %) versus prior year



Passengers and Seat Load Factor (SLF %) European Routes
 Comparison versus prior year



Passengers and Seat Load Factor (SLF %) Intercontinental Routes
 Comparison versus prior year



Traffic Statistics January 2010

SWISS Scheduled Services



Swiss
International
Air Lines

	January			Cumulative		
	2010	2009		2010	2009	
Number of Passengers ¹⁾						
Europe	821'639	749'018	9.7%	821'639	749'018	9.7%
Intercontinental	228'636	234'496	-2.5%	228'636	234'496	-2.5%
Total	1'050'275	983'514	6.8%	1'050'275	983'514	6.8%
Flights ²⁾						
Europe	10'298	9'819	4.9%	10'298	9'819	4.9%
Intercontinental	1'292	1'360	-5.0%	1'292	1'360	-5.0%
Total	11'590	11'179	3.7%	11'590	11'179	3.7%
Available Seat km (ASK, in millions)						
Europe	1'000	935	6.9%	1'000	935	6.9%
Intercontinental	1'882	2'020	-6.8%	1'882	2'020	-6.8%
Total	2'882	2'955	-2.5%	2'882	2'955	-2.5%
Revenue Passenger km (RPK, in millions)						
Europe	651	592	9.9%	651	592	9.9%
Intercontinental	1'553	1'562	-0.6%	1'553	1'562	-0.6%
Total	2'203	2'154	2.3%	2'203	2'154	2.3%
Seat Load Factor (SLF %) ³⁾						
Europe	65.1%	63.3%	1.8%P	65.1%	63.3%	1.8%P
Intercontinental	82.5%	77.3%	5.2%P	82.5%	77.3%	5.2%P
Total	76.5%	72.9%	3.6%P	76.5%	72.9%	3.6%P
Estimated Cargo Load Factor (%) ⁴⁾						
Total	76.6%	61.4%	15.2%P	76.6%	61.4%	15.2%P
Estimated Cargo Tonnes Kilometers (CTK, in 1000) ⁴⁾						
Total	101'413	85'479	18.6%	101'413	85'479	18.6%

¹⁾ All passengers; in accordance with Lufthansa, SWISS publishes the number of all passengers instead of revenue passengers.

²⁾ A flight includes all flight legs which are operated under one single flight number; intermediate stops are not considered.

³⁾ SLF = RPK / ASK

⁴⁾ Including mail

Traffic Statistics February 2010

SWISS Scheduled Services



Swiss
International
Air Lines

	February			Cumulative		
	2010	2009		2010	2009	
Number of Passengers ¹⁾						
Europe	792'464	696'958	13.7%	1'614'103	1'445'976	11.6%
Intercontinental	209'029	204'092	2.4%	437'665	438'588	-0.2%
Total	1'001'493	901'050	11.1%	2'051'768	1'884'564	8.9%
Flights ²⁾						
Europe	9'605	8'759	9.7%	19'903	18'578	7.1%
Intercontinental	1'150	1'190	-3.4%	2'442	2'550	-4.2%
Total	10'755	9'949	8.1%	22'345	21'128	5.8%
Available Seat km (ASK, in millions)						
Europe	913	827	10.4%	1'913	1'763	8.5%
Intercontinental	1'715	1'768	-3.0%	3'597	3'787	-5.0%
Total	2'628	2'595	1.3%	5'510	5'550	-0.7%
Revenue Passenger km (RPK, in millions)						
Europe	614	540	13.6%	1'265	1'133	11.7%
Intercontinental	1'415	1'332	6.2%	2'968	2'894	2.5%
Total	2'029	1'873	8.4%	4'233	4'027	5.1%
Seat Load Factor (SLF %) ³⁾						
Europe	67.2%	65.3%	1.9%P	66.1%	64.3%	1.8%P
Intercontinental	82.6%	75.4%	7.2%P	82.5%	76.4%	6.1%P
Total	77.2%	72.2%	5.0%P	76.8%	72.6%	4.2%P
Estimated Cargo Load Factor (%) ⁴⁾						
Total	86.0%	70.4%	15.6%P	81.0%	65.6%	15.4%P
Estimated Cargo Tonnes Kilometers (CTK, in 1000) ⁴⁾						
Total	103'759	87'209	19.0%	205'172	172'687	18.8%

¹⁾ All passengers; in accordance with Lufthansa, SWISS publishes the number of all passengers instead of revenue passengers.

²⁾ A flight includes now all flight legs which are operated under one single flight number; intermediate stops are not considered.

³⁾ SLF = RPK / ASK

⁴⁾ Including mail

Traffic Statistics March 2010 SWISS Scheduled Services



	March			Cumulative		
	2010	2009		2010	2009	
Number of Passengers ¹⁾						
Europe	948'612	827'492	14.6%	2'562'715	2'273'468	12.7%
Intercontinental	242'211	238'629	1.5%	679'876	677'217	0.4%
Total	1'190'823	1'066'121	11.7%	3'242'591	2'950'685	9.9%
Flights ²⁾						
Europe	10'864	9'869	10.1%	30'767	28'447	8.2%
Intercontinental	1'286	1'354	-5.0%	3'728	3'904	-4.5%
Total	12'150	11'223	8.3%	34'495	32'351	6.6%
Available Seat km (ASK, in millions)						
Europe	1'024	943	8.6%	2'936	2'705	8.5%
Intercontinental	1'910	2'008	-4.9%	5'507	5'796	-5.0%
Total	2'934	2'951	-0.6%	8'443	8'501	-0.7%
Revenue Passenger km (RPK, in millions)						
Europe	744	647	15.0%	2'009	1'780	12.9%
Intercontinental	1'637	1'548	5.7%	4'605	4'443	3.7%
Total	2'381	2'196	8.4%	6'614	6'223	6.3%
Seat Load Factor (SLF %) ³⁾						
Europe	72.7%	68.7%	4.0%P	68.4%	65.8%	2.6%P
Intercontinental	85.7%	77.1%	8.6%P	83.6%	76.7%	6.9%P
Total	81.2%	74.4%	6.8%P	78.3%	73.2%	5.1%P
Estimated Cargo Load Factor (%) ⁴⁾						
Total	87.0%	69.1%	17.9%P	83.1%	66.8%	16.3%P
Estimated Cargo Tonnes Kilometers (CTK, in 1000) ⁴⁾						
Total	113'766	96'849	17.5%	318'938	269'536	18.3%

¹⁾ All passengers; in accordance with Lufthansa, SWISS publishes the number of all passengers instead of revenue passengers.

²⁾ A flight includes all flight legs which are operated under one single flight number; intermediate stops are not considered.

³⁾ SLF = RPK / ASK

⁴⁾ Including mail